

TEENAGE PREGNANCY

Arizona, 1990-2000



Public Health Services

**Bureau of Public Health Statistics
Health Status and Vital Statistics Section**

Teenage pregnancy, 1990-2000

SOURCE: <http://www.azdhs.gov/plan/report/tp/teen00/index.htm>

Introduction/Key Findings/Figures

Key Findings

Tables

Appendix

Prepared and made Web-ready by:

Christopher K. Mrela, Ph.D., Assistant Registrar of Vital Statistics,
Trentham Coe, Senior Research Data Analyst

PURPOSE

This report is the 2000 update of information about pregnancies among females under age 20. The data for 2000 are placed in a temporal context by comparison with the data for the preceding years.

METHODS AND SOURCES

In this report, pregnancies are measured as the sum of three components: live births, fetal deaths (or stillbirths) and abortions to Arizona resident women, unless otherwise specified. It does not include spontaneous fetal losses that occur at less than 20 weeks of gestation. Induced terminations of pregnancy do not include those performed out-of-state to Arizona residents, since they are not reported. Pregnancy statistics for Arizona are not available on a sub-county level.

Teens or teenagers are defined as 10-14 year old preadolescents and adolescents 15-19 years of age. Where possible, the data presented distinguish 18-19 year old teenagers from those aged 15-17 and girls under 15 years of age.

The primary source documents for the data are the certificates of live births, certificates of fetal deaths and reports of induced terminations of pregnancy filed with the Arizona Department of Health Services.

Population denominators for Arizona's resident females, used to calculate rates, are projections from the Population Statistics Unit in the Arizona Department of Economic Security (DES) (data for 1993-1999) or census enumerations from the U.S. Census Bureau (data for 1980, 1990 and 2000).

Detailed population data by gender, age group and county were unavailable for 1991-1992. In order to obtain the population denominators for these two years, the 1990 percentages of population breakdowns were applied to 1991 and 1992 total state population estimates published by the DES.

DATA ORGANIZATION

Tables 1-9 present annual numbers and rates of pregnancy, fertility and abortion by year from 1990 to 2000, age group and ethnicity for Arizona adolescents. Temporal trends and changes may be assessed from these data. Table 11 provides pregnancy rates by single year of age among females aged 19 and younger. Tables 9-10 and 12-14 provide data by county of residence. Live births to teenage mothers are also reported in Tables 15-22 by marital status, education, previous pregnancies, trimester of entry into prenatal care, source of payment for labor and delivery and tobacco and alcohol use during pregnancy. Proportional contribution of teen births to all births is shown in Table 23 by area of residence and ethnic group in Arizona from 1990 to 2000. Table 24 compares birth rates in Arizona and United States.

The annual numbers of repeat pregnancies among teenage mothers are shown by age and year from 1990 to 2000 in Table 25. The estimated number of mothers who were under the age of 20 in Arizona in 2000 is given in Table 26. The 2000 population denominators for Arizona resident females by age group and county of residence, as well as by age group and ethnicity are presented in Table 27 and Table 28.

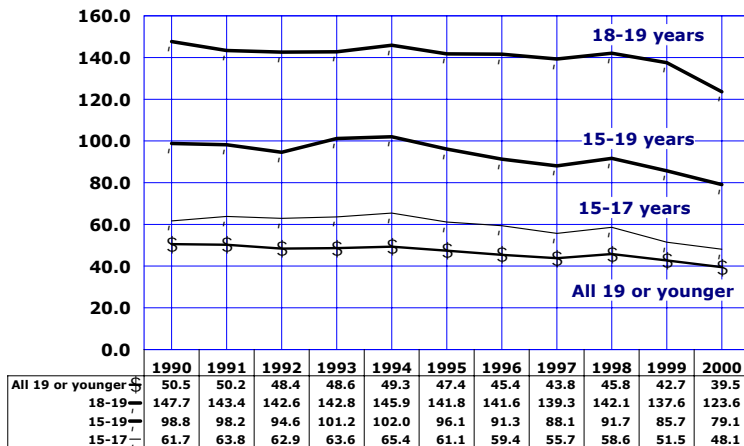
The numbers and rates of Arizona's teen births and pregnancies for 1997-1999 were revised in May 2001. The revised numbers and rates are presented in the Appendix. A detailed re-examination also is available online at:

<http://www.hs.state.az.us/plan/2ktbap.htm>

KEY FINDINGS

The following section presents some illustrative findings contained in the figures and tables of the report. It is not intended to be an exhaustive analysis of the tabulated data.

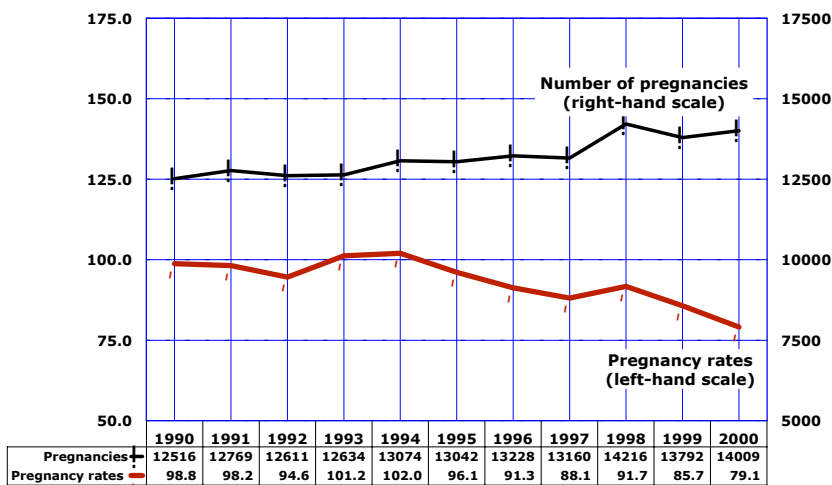
Figure 1
Pregnancy Rates by Age Group and Year Among Females 19 and Younger, Arizona, 1990-2000



Note: all rates are per 1,000 females in specified age group.

The pregnancy rate for Arizona teenagers 15-19 years old in 2000 was 79.1 pregnancies per 1,000 females (Figure 1), 7.7 percent lower than in 1999 and 22.4 percent lower than in 1994 when it reached the decade's peak of 102.0/1,000. The pregnancy rate for younger teenagers 15-17 years also reached a record low in 2000, dropping to 48.1/1,000, down 6.6 percent from 1999, and 26.5 percent from 1994. The pregnancy rate for older teenagers declined even more steeply in 2000 to 123.6/1,000, down 10.2 percent from 1999, and 16.3 percent from the rate of 147.7/1,000 in 1990 (Figure 1).

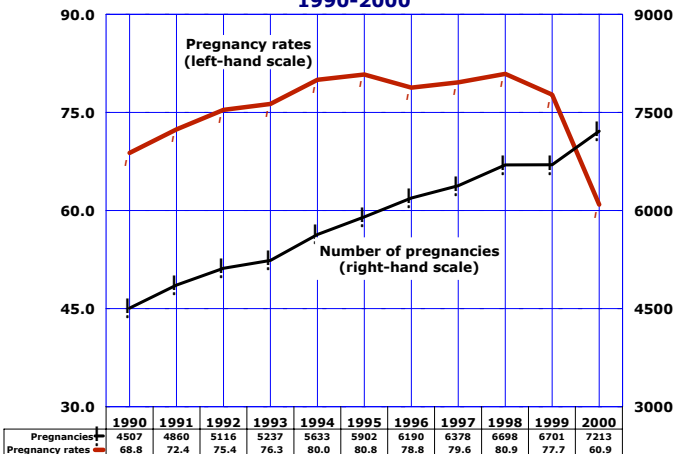
Figure 2
Trends in the Number of Pregnancies and Pregnancy Rates Among Females 15-19 Years Old, Arizona, 1990-2000



Pregnancy rate=the number of pregnancies per 1,000 females in specified age group

Trends in the number of pregnancies to teenage women do not always parallel the pregnancy rate. The pregnancy rate measures the proportion of teenagers becoming pregnant in a given year; the relative "risk for pregnancy" in a population "at risk". The number of pregnancies is, however, also determined by the size of the population "at risk": by the number of teenage females in the population. While the teen pregnancy rate has fallen in Arizona, **the drop in the rate has not been enough to offset the growth in the female teenage population (Figure 2).** The declining teenage pregnancy rate has not been accompanied by a similar decrease in the number of pregnancies. In fact, the number of 14,009 pregnancies to females 15-19 years old in Arizona in 2000 was the highest number ever recorded in the State.

Figure 3
Trends in the Number of Pregnancies and Pregnancy Rates Among Hispanic Females 19 Years And Younger, Arizona, 1990-2000



The pregnancy rate for Hispanic teenagers dropped 21.6 percent from 77.7 pregnancies per 1,000 females 19 or younger in 1999 to 60.9 in 2000 (Figure 3). This unprecedented decline should be interpreted with caution. The pregnancy rates for 1991-1999 are based on population denominators projected from the 1990 census. These pregnancy rates are likely to be overstated, because the Hispanic population base used to calculate them was too small. According to the 2000 census, there were 118,490 Hispanic females 19 or younger in Arizona, 37.5 percent more than the estimated number of 86,203 in 1999. The pregnancy rate did not decline because there were fewer Hispanic pregnancies in 2000, but because of the dramatic increase in the denominator.

Figure 4
Trends in Pregnancy Rates by Race/Ethnicity Among Females 15-19 Years Old, Arizona, 1990-2000

The pregnancy rates of Hispanic, Black, and American Indian teenagers exceeded the corresponding rates of Asian and White non-Hispanic females in every age group in 2000. Hispanic teenage females continued to have the highest age-specific pregnancy rates among all ethnic groups, followed by Blacks, American Indians, White non-Hispanics and Asians. Among females 15-19 years old, the Hispanic to White non-Hispanic differential in pregnancy rates was 2.5 times (123.0 vs. 49.9, **Figure 4**) in 2000.

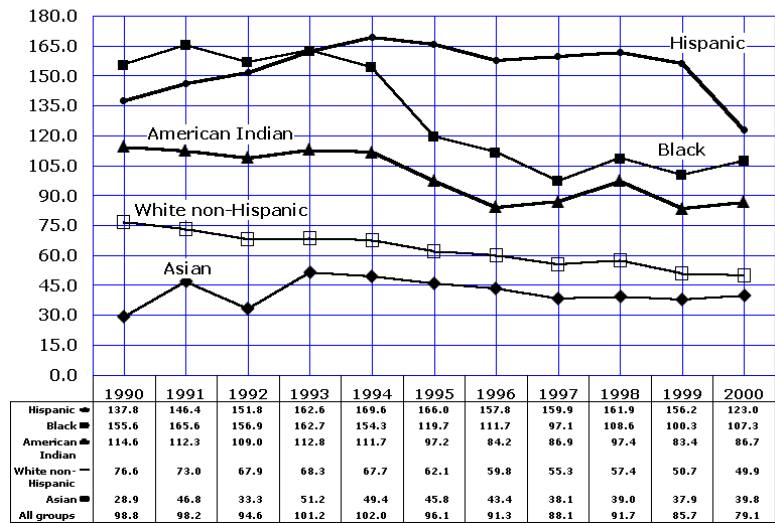
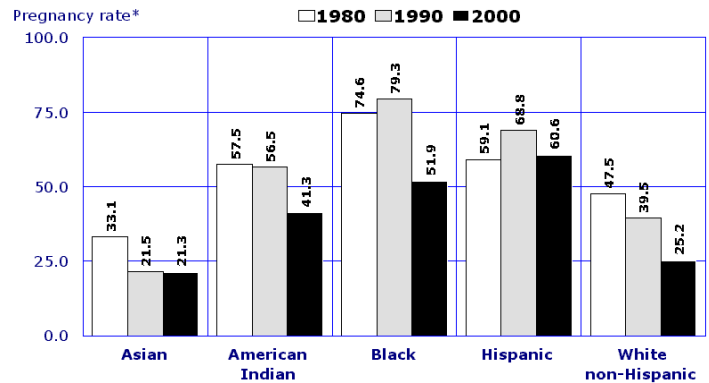


Figure 5
Comparison of Pregnancy Rates by Ethnic Group Among Females Aged 19 and Younger in Arizona in 1980, 1990 and 2000

Between 1980 and 2000, pregnancy rates declined for all age, race, and Hispanic origin populations (**Figure 3**), with the steepest decline recorded for White non-Hispanic teens. In contrast, Hispanic females aged 19 and younger were the only group for whom the 2000 pregnancy rate of 60.6/1,000 slightly exceeded the 1980 rate of 59.1/1,000.



* Number of pregnancies per 1,000 females 10-19 years old in specified group.

Figure 6
Proportional Contribution by Race/Ethnicity to Pregnancies and Live Births Among Females 19 or Younger, Arizona, 2000

Hispanics, who accounted for 32.8 percent of all females 19 or younger in Arizona in 2000, made a significantly higher proportional contribution to teen pregnancies (50.5 percent) and live births (53.7 percent). In contrast, White non-Hispanic females who accounted for 52.8 percent of all teens in Arizona had a much lower proportional representation among teen pregnancies (33.7 percent) and live births (30.8 percent, **Figure 6**).

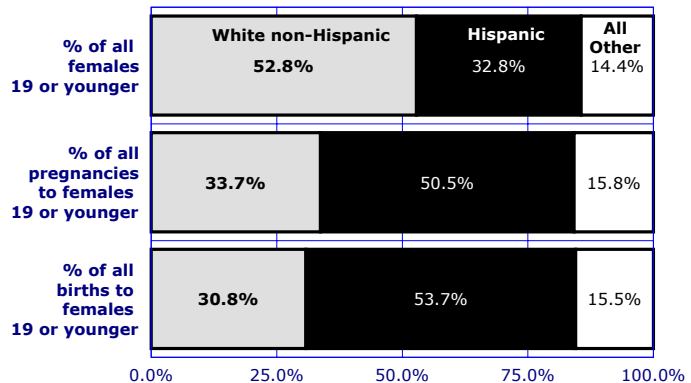
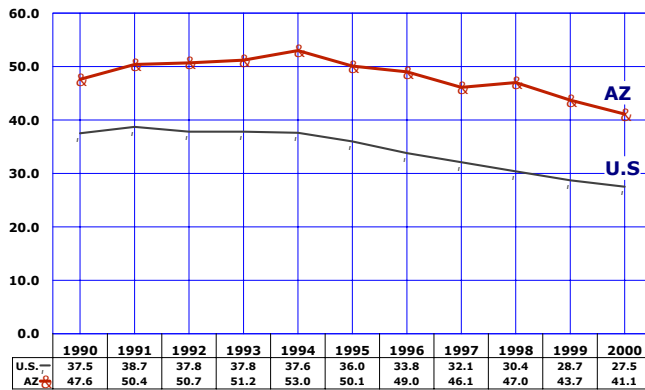


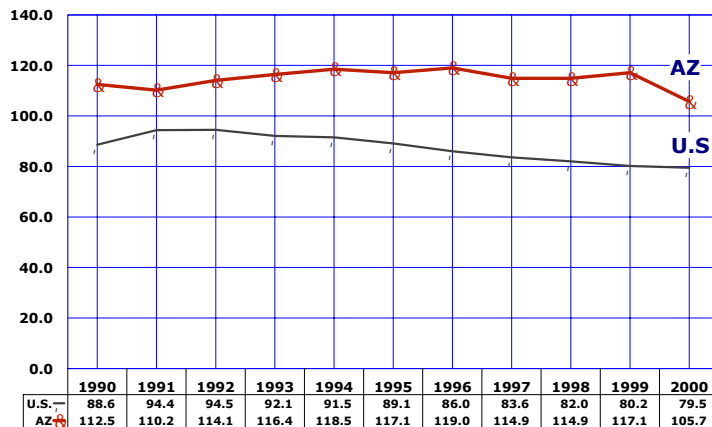
Figure 7
Birth Rates*Among Females 15-17 Years Old,
Arizona and United States, 1990-2000



* Number of births per 1,000 females 15-17 years old.

Between 1990 and 2000, the birth rates of Arizona younger (15-17 years) and older (18-19 years) adolescents have been consistently higher than the national rates (**Figure 7, Figure 8**). The 2000 Arizona birth rate of 41.1/1,000 was 49.5 percent greater than the birth rate of 27.5/1,000 for all U.S. teenagers aged 15-17 years (**Table 24**).

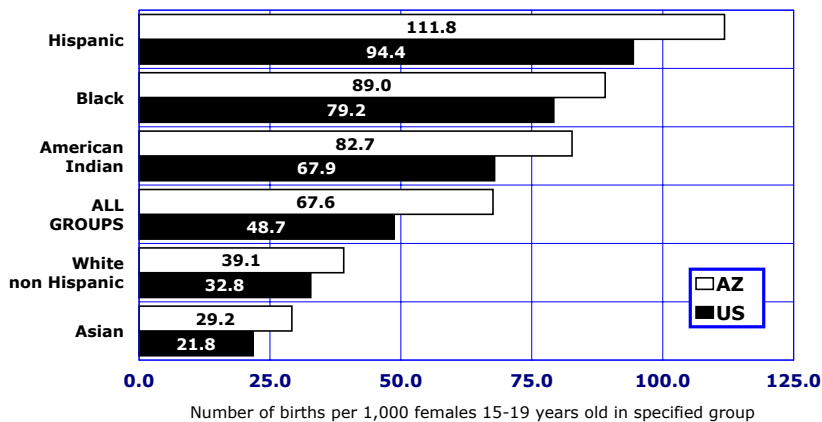
Figure 8
Birth Rates*Among Females 18-19 Years Old,
Arizona and United States, 1990-2000



* Number of births per 1,000 females 18-19 years old.

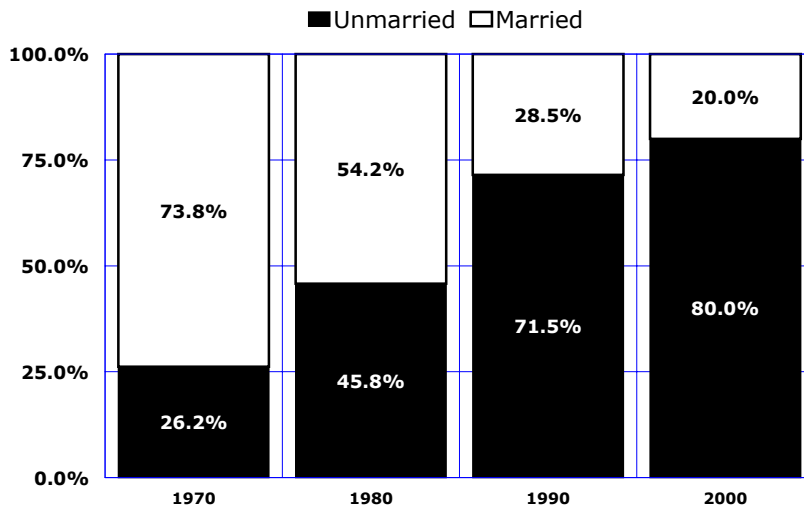
The 2000 Arizona birth rate of 105.7/1,000 was 33 percent greater than the birth rate of 79.5/1,000 for all U.S. teenagers aged 18-19 years (**Figure 8, Table 24**).

Figure 9
Birth Rates by Race/Ethnic Group Among Females 15-19
Years Old, Arizona and United States, 2000



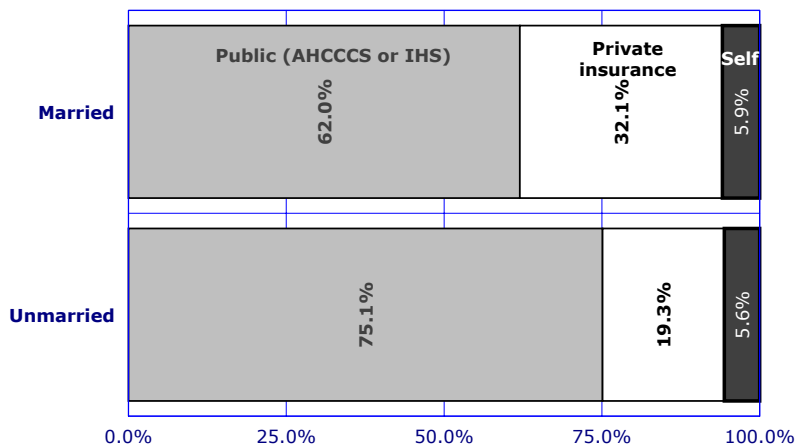
Among teens aged 15-19 in 2000, Arizona birth rates were greater in every race/ethnic group than among their respective national peers (**Figure 9**).

Figure 10
Births to Mothers 15-19 Years Old by Marital Status,
Arizona, 1970, 1980, 1990 and 2000



Unwed mothers have accounted for an increasing annual proportion of births throughout the 1970s, 1980s and 1990s. Three decades ago, the proportion of nonmarital births among teenagers aged 15-19 years was slightly above 25 percent (**Figure 10**). In 2000, nonmarital births accounted for eight out of ten births to mothers 15-19 years old.

Figure 11
Sources of Payment for Labor and Delivery Among
Mothers 15-19 Years Old, Arizona, 2000



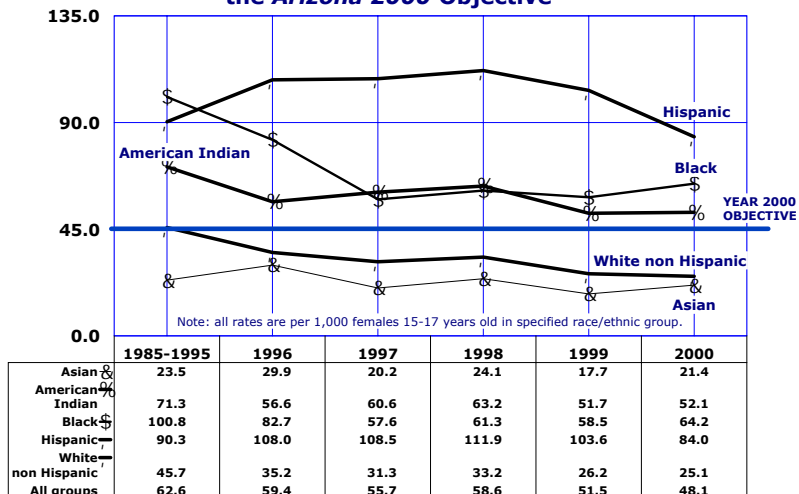
The Arizona Health Care Cost Containment System (AHCCCS) paid for 42.5 percent of the total deliveries in 2000, but 70.3 percent of the deliveries to mothers 19 or younger.

Almost 24 percent of AHCCCS mothers were teenagers under the age 20 compared to 6 percent of women giving birth in 2000 who had private insurance coverage.

Married mothers 15-19 years old are less likely than unmarried to utilize public sources of payment for birth (62.0 vs. 75.1 percent, **Figure 11**), and more likely to have private health insurance coverage (32.1 vs. 19.3 percent, **Figure 11**).

Note: the Arizona State Health Care Cost Containment System (AHCCCS) is the State's Medicaid program. IHS is the Indian Health Service. Self-pay includes unknown source of payment.

Figure 12
Pregnancy Rates by Race/Ethnicity Among
Females 15-17 Years Old: 1985-1995, 1996-2000, and
the Arizona 2000 Objective



In 2000, the pregnancy rate of 48.1 per 1,000 adolescent girls 15-17 years old in Arizona was 6.9 percent greater than the **Arizona 2000** objective of 45.0/1,000 (**Figure 12**). The 2000 pregnancy rates among Asian and White non-Hispanic females ages 15-17 were at least 48 percent lower than the objective. In contrast the 2000 pregnancy rate among Hispanic females 15-17 years old exceeded the target rate by 75 percent.

**TABLE 1
PREGNANCIES AND PREGNANCY OUTCOMES BY AGE GROUP AND YEAR,
FEMALES 19 OR LESS YEARS OLD, ARIZONA, 1990-2000**

Pregnancy Outcome by Year	Total, Females 19 Years or Younger	Under 15 Years	15-19 Years Old		
			Total	15-17 Years	18-19 Years
All Pregnancies					
1990	12,769	253	12,516	4,436	8,080
1991	13,037	268	12,769	4,714	8,055
1992	12,885	274	12,611	4,762	7,849
1993	12,890	256	12,634	4,803	7,831
1994	13,407	333	13,074	5,092	7,982
1995	13,356	314	13,042	5,092	7,950
1996	13,521	293	13,228	5,262	7,966
1997	13,438	278	13,160	5,096	8,064
1998	14,531	316	14,216	5,482	8,734
1999	14,095	303	13,792	4,993	8,799
2000	14,287	278	14,009	5,016	8,993
Live Births					
1990	9,767	188	9,579	3,423	6,156
1991	10,108	193	9,915	3,726	6,189
1992	10,307	188	10,119	3,838	6,281
1993	10,438	187	10,251	3,870	6,381
1994	10,858	246	10,612	4,132	6,480
1995	10,973	229	10,744	4,178	6,566
1996	11,247	216	11,031	4,340	6,691
1997	11,085	214	10,871	4,219	6,652
1998	11,695	234	11,461	4,397	7,064
1999	11,963	238	11,725	4,236	7,489
2000	12,189	216	11,973	4,284	7,689
Abortions					
1990	2,940	63	2,877	994	1,883
1991	2,862	73	2,789	955	1,834
1992	2,467	84	2,383	885	1,498
1993	2,357	68	2,289	892	1,397
1994	2,458	82	2,376	916	1,460
1995	2,294	82	2,212	880	1,332
1996	2,186	72	2,114	892	1,222
1997	2,233	56	2,177	826	1,351
1998	2,735	78	2,657	1,046	1,611
1999	2,046	60	1,986	727	1,259
2000	1,988	57	1,931	684	1,247
Fetal Losses					
1990	62	2	60	19	41
1991	67	2	65	33	32
1992	111	2	109	39	70
1993	95	1	94	41	53
1994	91	5	86	44	42
1995	89	3	86	34	52
1996	88	5	83	30	53
1997	120	8	112	51	61
1998	102	4	98	39	59
1999	85	5	80	29	51
2000	110	5	105	48	57

TABLE 2
PREGNANCY RATES¹ BY PREGNANCY OUTCOME, AGE GROUP AND YEAR,
FEMALES 19 OR LESS YEARS OLD, ARIZONA, 1990-2000

Pregnancy Outcome by Year	Total, Females 19 Years or Younger	Under 15 Years	15-19 Years Old		
			Total	15-17 Years	18-19 Years
All Pregnancies					
1990	50.5	2.0	98.8	61.7	147.7
1991	50.2	2.1	98.2	63.8	143.4
1992	48.4	2.1	94.6	62.9	142.6
1993	48.6	1.8	101.2	63.6	142.8
1994	49.3	2.3	102.0	65.4	145.9
1995	47.4	2.2	96.1	61.1	141.8
1996	45.4	1.9	91.3	59.4	141.6
1997	43.8	1.8	88.1	55.7	139.3
1998	45.8	2.0	91.7	58.6	142.1
1999	42.7	1.8	85.7	51.5	137.6
2000	39.5	1.5	79.1	48.1	123.6
Live Births					
1990	38.6	1.5	75.6	47.6	112.5
1991	38.9	1.5	77.7	50.4	110.2
1992	38.7	1.4	75.9	50.7	114.1
1993	39.4	1.3	82.1	51.2	116.4
1994	39.9	1.7	82.8	53.0	118.5
1995	38.9	1.6	79.1	50.1	117.1
1996	37.8	1.4	76.1	49.0	119.0
1997	36.1	1.4	72.8	46.1	114.9
1998	36.9	1.4	73.9	47.0	114.9
1999	36.2	1.4	72.9	43.7	117.1
2000	33.7	1.2	67.6	41.1	105.7
Abortions					
1990	11.6	0.5	22.7	13.8	34.4
1991	11.0	0.6	21.4	12.9	32.6
1992	9.3	0.6	17.9	11.7	27.2
1993	8.9	0.5	18.3	11.8	25.5
1994	9.0	0.6	18.5	11.8	26.7
1995	8.1	0.6	16.3	10.6	23.8
1996	7.4	0.5	14.6	10.1	21.7
1997	7.3	0.4	14.6	9.0	23.3
1998	8.6	0.5	17.1	11.2	26.2
1999	6.1	0.3	12.3	7.5	19.7
2000	5.5	0.3	10.9	6.6	17.1
Fetal Losses					
1990	0.3	0.0	0.5	0.3	0.8
1991	0.3	0.0	0.5	0.4	0.6
1992	0.4	0.0	0.8	0.5	1.3
1993	0.4	0.0	0.8	0.5	1.0
1994	0.3	0.0	0.7	0.6	0.8
1995	0.3	0.0	0.6	0.4	0.9
1996	0.3	0.0	0.6	0.3	0.9
1997	0.4	0.0	0.7	0.6	1.0
1998	0.3	0.0	0.6	0.4	1.0
1999	0.3	0.0	0.5	0.3	0.8
2000	0.3	0.0	0.6	0.5	0.8

¹ The number of pregnancies (live births+abortions+fetal deaths) per 1,000 females in specified age group.
0.0: Quantity more than zero but less than 0.05.

**TABLE 3
LIVE BIRTHS TO FEMALES 19 OR LESS YEARS OLD BY AGE GROUP,
ETHNIC GROUP AND YEAR, ARIZONA, 1990-2000**

Ethnic Group and Year	Total, Females 19 Years or Younger	Under 15 Years	15-19 Years Old		
			Total	15-17 Years	18-19 Years
White non-Hispanic					
1990	4,116	44	4,072	1,230	2,842
1991	4,061	46	4,015	1,292	2,723
1992	4,060	43	4,017	1,351	2,666
1993	4,024	51	3,973	1,343	2,630
1994	4,023	61	3,962	1,392	2,570
1995	4,042	51	3,991	1,338	2,653
1996	4,033	40	3,993	1,368	2,625
1997	3,733	27	3,706	1,239	2,467
1998	3,843	38	3,805	1,261	2,544
1999	3,869	31	3,838	1,115	2,723
2000	3,759	38	3,721	1,040	2,681
Hispanic					
1990	3,941	88	3,853	1,554	2,299
1991	4,255	104	4,151	1,705	2,446
1992	4,543	103	4,440	1,840	2,600
1993	4,688	102	4,586	1,837	2,749
1994	5,075	138	4,937	2,066	2,871
1995	5,351	133	5,218	2,241	2,977
1996	5,628	132	5,496	2,308	3,188
1997	5,736	146	5,590	2,329	3,261
1998	5,951	142	5,809	2,419	3,390
1999	6,161	149	6,012	2,415	3,597
2000	6,548	144	6,404	2,567	3,837
Black					
1990	562	23	539	235	304
1991	620	19	601	254	347
1992	570	12	558	237	321
1993	581	12	569	241	328
1994	576	14	562	223	339
1995	491	17	474	185	289
1996	498	10	488	220	268
1997	519	13	506	207	299
1998	586	16	570	223	347
1999	603	14	589	222	367
2000	572	12	560	198	362
American Indian					
1990	1,101	32	1,069	388	681
1991	1,102	24	1,078	448	630
1992	1,080	30	1,050	394	656
1993	1,060	20	1,040	419	621
1994	1,095	32	1,063	421	642
1995	991	25	966	387	579
1996	996	28	968	401	567
1997	971	25	946	407	539
1998	1,122	31	1,091	429	662
1999	1,050	38	1,012	389	623
2000	1,089	20	1,069	405	664

Note: see Table 1 for the number of births for all ethnic groups.

**TABLE 4
ABORTIONS TO FEMALES 19 OR LESS YEARS OLD BY AGE GROUP,
ETHNIC GROUP AND YEAR, ARIZONA, 1990-2000**

Ethnic Group and Year	Total, Females 19 Years or Younger	Under 15 Years	15-19 Years Old		
			Total	15-17 Years	18-19 Years
White non-Hispanic					
1990	1,895	29	1,866	653	1,213
1991	1,800	38	1,762	620	1,142
1992	1,470	37	1,433	523	910
1993	1,311	29	1,282	504	778
1994	1,429	41	1,388	552	836
1995	1,244	33	1,211	481	730
1996	1,148	27	1,121	478	643
1997	1,179	29	1,150	433	717
1998	1,480	38	1,442	563	879
1999	981	26	955	369	586
2000	1,020	25	995	342	653
Hispanic					
1990	566	18	548	209	339
1991	605	21	584	199	385
1992	573	39	534	202	332
1993	549	21	528	198	330
1994	558	21	537	200	337
1995	551	30	521	204	317
1996	562	23	539	218	321
1997	642	21	621	240	381
1998	747	29	718	292	426
1999	540	16	524	183	341
2000	610	22	588	228	360
Black					
1990	150	7	143	43	100
1991	148	5	143	50	93
1992	160	4	156	60	96
1993	147	4	143	49	94
1994	137	7	130	42	88
1995	99	4	95	34	61
1996	105	6	99	44	55
1997	107	0	107	40	67
1998	147	4	143	51	92
1999	96	7	89	27	62
2000	115	5	110	42	68
American Indian					
1990	64	1	63	19	44
1991	49	3	46	13	33
1992	58	2	56	19	37
1993	61	3	58	18	40
1994	55	2	53	15	38
1995	66	3	63	24	39
1996	54	4	40	18	32
1997	58	2	56	17	39
1998	53	0	53	22	31
1999	56	3	53	17	36
2000	43	2	41	13	28

Note: See Table 1 for the number of births for all ethnic groups.

**TABLE 5
NUMBER OF PREGNANCIES¹ BY PREGNANCY OUTCOME, ETHNIC GROUP AND YEAR
AMONG FEMALES AGED 17 AND YOUNGER WITH RATES², ARIZONA, 1990-2000**

Ethnicity/Pregnancy Outcome	1990	1991	1992	1993	1994	1995	1996	1997	1998	1999	2000	2000 Rates
WHITE, ³ total:	1,956	1,996	1,954	1,927	2,046	1,903	1,937	1,760	1,918	1,566	1,462	9.7
Births	1,274	1,338	1,394	1,394	1,453	1,389	1,408	1,266	1,299	1,146	1,078	7.1
Abortions	682	658	560	533	593	514	505	462	601	395	367	2.4
HISPANIC, total:	1,869	2,029	2,184	2,185	2,425	2,608	2,681	2,736	2,882	2,763	2,991	31.5
Births	1,642	1,809	1,943	1,939	2,204	2,374	2,440	2,475	2,561	2,564	2,711	28.6
Abortions	227	220	241	219	221	234	241	261	321	199	250	2.6
BLACK, total:	308	328	313	306	286	240	289	242	263	275	227	24.0
Births	258	273	249	253	237	202	230	220	239	236	210	19.4
Abortions	50	55	64	53	49	38	50	40	55	34	47	4.3
AMERICAN INDIAN, total:	440	488	446	460	470	439	453	489	530	450	476	19.4
Births	420	472	424	439	453	412	429	432	460	427	425	18.6
Abortions	20	16	22	21	17	27	22	19	22	20	15	0.7
ALL ETHNIC GROUPS, ⁴ total:	4,689	4,982	5,036	5,059	5,425	5,406	5,555	5,374	5,798	5,296	5,294	18.4
Births	3,611	3,919	4,026	4,057	4,378	4,407	4,556	4,433	4,631	4,474	4,500	15.6
Abortions	1,057	1,028	969	960	998	962	964	882	1,124	787	741	2.6
PREGNANCY RATE, total:	23.6	24.5	24.1	23.5	24.2	23.6	23.1	22.0	22.7	19.9	18.4	
Fertility rate ⁵	18.2	19.3	19.3	18.8	19.7	19.2	18.9	18.2	18.1	16.8	15.6	
Abortion rate	5.3	5.1	4.6	4.5	4.5	4.2	4.0	3.5	4.4	3.0	2.6	

¹ Fetal deaths are included in the total counts of pregnancies.

² All rates per 1,000 females 10-17 years old.

³ Not of Hispanic origin.

⁴ Includes other and unspecified ethnicity.

⁵ Number of births per 1,000 females 10-17 years old.

Note: The numbers and rates of births and pregnancies for 1997-1999 were revised in May 2001 and differ from those previously published.

**TABLE 6
NUMBER OF PREGNANCIES¹ BY PREGNANCY OUTCOME, ETHNIC GROUP AND YEAR
AMONG FEMALES 15-17 YEARS OLD WITH RATES², ARIZONA, 1990-2000**

Ethnicity/Pregnancy Outcome	1990	1991	1992	1993	1994	1995	1996	1997	1998	1999	2000	2000 Rates
WHITE,³ total:	1,883	1,912	1,874	1,847	1,944	1,819	1,867	1,699	1,841	1,505	1,397	25.1
Births	1,230	1,292	1,351	1,343	1,392	1,338	1,368	1,239	1,261	1,115	1,040	18.7
Abortions	653	620	523	504	552	481	478	433	563	369	342	6.1
HISPANIC, total:	1,763	1,904	2,042	2,035	2,266	2,445	2,526	2,569	2,711	2,598	2,823	84.0
Births	1,554	1,705	1,840	1,837	2,066	2,241	2,308	2,329	2,419	2,415	2,567	76.4
Abortions	209	199	202	198	200	204	218	240	292	183	228	6.8
BLACK, total:	278	304	297	290	265	219	271	250	276	254	242	64.2
Births	235	254	237	241	223	185	220	207	223	222	198	52.5
Abortions	43	50	60	49	42	34	44	40	51	27	42	11.1
AMERICAN INDIAN, total:	407	461	413	437	436	411	421	439	464	408	421	52.1
Births	388	448	394	419	421	387	401	407	429	389	405	50.2
Abortions	19	13	19	18	15	24	18	17	22	17	13	1.6
ALL ETHNIC GROUPS,⁴ total:	4,436	4,714	4,762	4,803	5,092	5,092	5,262	5,096	5,482	4,993	5,016	48.1
Births	3,423	3,726	3,838	3,870	4,132	4,178	4,340	4,219	4,397	4,236	4,284	41.1
Abortions	994	955	885	892	916	880	892	826	1,046	727	684	6.6
PREGNANCY RATE, total:	61.7	63.8	62.9	63.6	65.4	61.1	59.4	55.7	58.6	51.5	48.1	
Fertility rate⁵	47.6	50.4	50.7	51.2	53.0	50.1	49.0	46.1	47.0	43.7	41.1	
Abortion rate	13.8	12.9	11.7	11.8	11.8	10.6	10.1	9.0	11.2	7.5	6.6	

¹ Fetal deaths are included in the total counts of pregnancies.

² All rates per 1,000 females 15-17 years old.

³ Not of Hispanic origin.

⁴ Includes other and unspecified ethnicity.

⁵ Number of births per 1,000 females 15-17 years old.

Note: The numbers and rates of births and pregnancies for 1997-1999 were revised in May 2001 and differ from those previously published.

**TABLE 7
NUMBER OF PREGNANCIES¹ BY PREGNANCY OUTCOME, ETHNIC GROUP AND
YEAR AMONG FEMALES 18-19 YEARS OLD WITH RATES², ARIZONA, 1990-2000**

Ethnicity/Pregnancy Outcome	1990	1991	1992	1993	1994	1995	1996	1997	1998	1999	2000	2000 Rates
WHITE³ total:	4,055	3,865	3,576	3,408	3,406	3,383	3,312	3,218	3,457	3,349	3,352	85.5
Births	2,842	2,723	2,666	2,630	2,570	2,653	2,625	2,467	2,544	2,723	2,681	68.0
Abortions	1,213	1,142	910	778	836	730	643	717	879	586	653	16.6
HISPANIC, total:	2,683	2,831	2,932	3,079	3,208	3,234	3,509	3,642	3,816	3,938	4,222	178.4
Births	2,290	2,446	2,600	2,749	2,871	2,977	3,188	3,261	3,390	3,597	3,837	162.2
Abortions	339	385	332	330	337	317	321	381	426	341	360	15.2
BLACK, total:	404	440	417	422	427	350	328	368	442	434	433	171.7
Births	304	347	321	328	339	289	268	299	347	367	362	143.5
Abortions	100	93	96	94	88	61	55	67	92	62	68	27.0
AMERICAN INDIAN, total:	725	663	693	661	680	618	603	600	710	665	700	144.4
Births	681	630	656	621	642	579	567	539	662	623	664	136.9
Abortions	44	33	37	40	38	39	32	39	31	36	28	5.8
ALL ETHNIC GROUPS,⁴ total:	8,080	8,055	7,849	7,831	7,982	7,950	7,966	8,064	8,734	8,799	8,993	123.6
Births	6,156	6,189	6,281	6,381	6,480	6,566	6,691	6,652	7,064	7,489	7,689	105.7
Abortions	1,883	1,834	1,498	1,397	1,460	1,332	1,222	1,351	1,611	1,259	1,247	17.1
PREGNANCY RATE, total:	147.7	143.4	142.6	142.8	145.9	141.8	141.6	139.3	142.1	137.6	123.6	
Fertility rate⁵	112.5	110.2	114.1	116.4	118.5	117.1	119.0	114.9	114.9	117.1	105.7	
Abortion rate	34.4	32.6	27.2	25.5	26.7	23.8	21.7	23.3	26.2	19.7	17.1	

¹ Fetal deaths are included in the total count of pregnancies.

² All rates per 1,000 females 18-19 years old.

³ Not of Hispanic origin.

⁴ Includes other and unspecified ethnicity.

⁵ Number of births per 1,000 females 18-19 years old.

Note: The numbers and rates of births and pregnancies for 1997-1999 were revised in May 2001 and differ from those previously published.

**TABLE 8
NUMBER OF PREGNANCIES¹ BY PREGNANCY OUTCOME, ETHNIC GROUP AND YEAR
AMONG FEMALES 19 OR LESS YEARS OLD, WITH RATES², ARIZONA, 1990-2000**

Ethnicity/Pregnancy Outcome	1990	1991	1992	1993	1994	1995	1996	1997	1998	1999	2000	2000 Rates
WHITE,³ total:	6,011	5,861	5,530	5,335	5,452	5,286	5,249	4,978	5,375	4,915	4,814	25.2
Births	4,116	4,061	4,060	4,024	4,023	4,042	4,033	3,733	3,843	3,869	3,759	19.7
Abortions	1,895	1,800	1,470	1,311	1,429	1,244	1,148	1,179	1,480	981	1,020	5.3
HISPANIC, total:	4,507	4,860	5,116	5,237	5,633	5,902	6,190	6,378	6,698	6,701	7,213	60.9
Births	3,941	4,255	4,543	4,688	5,075	5,351	5,628	5,736	5,951	6,161	6,548	55.3
Abortions	566	605	573	549	558	551	562	642	747	540	610	5.1
BLACK, total:	712	768	730	728	713	590	617	582	644	669	620	51.9
Births	562	620	570	581	576	491	498	519	586	603	572	42.9
Abortions	150	148	160	147	137	99	105	107	147	96	115	8.6
AMERICAN INDIAN, total:	1,165	1,151	1,138	1,121	1,150	1,057	1,056	1,117	1,301	1,155	1,216	41.3
Births	1,101	1,102	1,080	1,060	1,095	991	996	971	1,122	1,050	1,089	39.3
Abortions	64	49	58	61	55	66	54	58	53	56	43	1.6
ALL ETHNIC GROUPS,⁴ total:	12,769	13,037	12,885	12,890	13,407	13,356	13,521	13,438	14,532	14,095	14,287	39.5
Births	9,767	10,108	10,307	10,438	10,858	10,973	11,247	11,085	11,695	11,963	12,189	33.7
Abortions	2,940	2,862	2,476	2,357	2,458	2,294	2,186	2,233	2,735	2,046	1,988	5.5
PREGNANCY RATE, total:	50.5	50.2	48.4	48.6	49.3	47.4	45.4	43.8	45.8	42.7	39.5	
Fertility rate⁵	38.6	38.9	38.7	39.4	39.9	38.9	37.8	36.1	36.9	36.2	33.7	
Abortion rate	11.6	11.0	9.3	8.9	9.4	8.1	7.4	7.3	8.6	6.2	5.5	

¹ Fetal deaths are included in the total counts of pregnancies.

² All rates per 1,000 females 19 or less years old.

³ Not of Hispanic origin.

⁴ Includes other and unspecified ethnicity.

⁵ Number of births per 1,000 females 19 or less years old.

Note: The numbers and rates of births and pregnancies for 1997-1999 were revised in May 2001 and differ from those previously published.

**TABLE 9
TRENDS IN PREGNANCY RATES* BY COUNTY OF RESIDENCE AMONG FEMALES 10-17 AND 18-19 YEARS OLD,
ARIZONA, 1990-2000**

		ARIZONA	APACHE	COCHISE	COCONINO	GILA	GRAHAM	GREENLEE	LA PAZ	MARICOPA	MOHAVE	NAVAJO	PIMA	PINAL	SANTA CRUZ	YAVAPAI	YUMA
19 YEARS OR YOUNGER	1990	50.5	41.4	42.3	39.8	63.8	33.6	34.1	39.3	54.7	46.1	45.3	45.0	66.6	42.3	33.2	44.5
	1991	50.2	42.3	41.7	30.5	44.0	45.0	46.6	43.1	54.4	45.8	45.1	45.5	62.7	49.3	38.5	47.8
	1992	48.4	37.4	40.6	29.3	55.1	31.1	27.5	40.7	52.4	43.2	43.9	42.3	59.8	48.8	37.4	50.4
	1993	48.6	39.0	44.8	43.3	50.3	37.3	41.1	37.4	50.4	48.3	43.4	46.4	58.2	48.5	35.3	55.0
	1994	49.3	37.2	39.7	38.9	48.6	34.3	35.4	44.2	51.7	46.2	41.0	49.2	58.4	46.7	35.1	54.5
	1995	47.4	31.7	42.9	39.6	40.5	28.9	51.8	45.2	48.9	45.2	42.1	45.5	50.8	44.6	37.0	54.0
	1996	45.4	29.6	37.5	39.7	42.4	40.1	53.6	29.8	47.1	44.2	37.0	44.3	47.9	42.3	34.9	50.1
	1997	43.8	30.4	39.8	31.7	45.0	41.3	46.1	44.1	44.6	42.6	37.4	43.1	46.8	43.1	32.4	48.6
	1998	45.8	30.2	36.2	28.0	45.4	36.3	43.3	39.2	46.9	40.1	41.9	43.1	49.4	48.3	37.0	46.6
	1999	42.7	23.9	35.6	30.2	41.4	29.3	34.9	29.2	44.6	40.1	40.4	38.8	44.9	41.7	33.7	46.3
2000	39.5	29.2	38.7	28.6	41.1	28.8	26.7	32.6	40.7	33.5	34.8	39.6	47.7	39.3	33.0	42.0	
18-19 YEARS OLD	1990	147.7	170.3	147.4	88.4	250.0	101.3	152.9	110.1	159.7	172.1	178.6	113.6	221.4	167.4	124.9	151.8
	1991	143.4	160.9	147.2	59.1	176.3	133.2	280.5	138.4	155.7	172.5	178.7	116.2	187.6	161.1	128.8	152.0
	1992	142.6	150.3	154.4	76.9	223.9	97.1	146.1	119.1	146.7	164.5	179.9	104.3	190.1	164.2	118.7	153.3
	1993	142.8	136.6	130.2	130.9	154.6	166.7	117.2	133.3	163.7	166.4	161.3	152.6	188.7	153.3	95.2	172.0
	1994	145.9	132.1	113.4	125.5	149.4	108.7	90.9	118.5	167.1	161.5	152.6	155.8	165.3	147.7	129.5	184.8
	1995	141.6	113.4	106.5	106.3	133.3	96.3	229.6	146.7	157.4	193.9	150.2	134.1	167.1	150.2	135.2	179.6
	1996	141.6	107.2	114.8	112.7	143.8	131.8	189.4	91.4	146.8	146.8	130.3	134.6	147.6	135.7	120.1	157.1
	1997	139.3	98.8	155.6	91.8	154.5	120.4	192.6	144.9	143.0	156.3	124.5	133.3	152.1	122.6	103.5	168.4
	1998	142.1	105.7	115.5	77.6	130.5	111.1	94.0	135.7	148.0	139.1	138.0	123.8	159.9	136.9	111.7	156.6
	1999	137.6	88.3	115.5	78.9	121.0	94.8	116.1	72.7	146.5	139.4	141.7	118.3	145.9	145.2	114.8	151.7
2000	135.8	109.9	124.5	74.7	167.3	74.1	123.8	127.1	127.8	139.7	154.1	104.7	161.0	132.1	124.9	149.8	
10-17 YEARS OLD	1990	23.6	16.6	20.1	17.6	29.0	15.1	18.5	18.4	26.1	20.6	20.3	21.3	31.8	17.6	12.5	17.9
	1991	24.5	19.5	19.4	17.5	19.2	21.2	16.0	23.4	26.9	20.1	20.0	21.1	34.6	24.5	18.3	22.0
	1992	24.1	15.7	16.5	19.2	23.6	13.8	13.3	24.6	26.8	18.6	18.3	20.9	30.6	16.0	19.1	25.0
	1993	23.5	18.2	23.4	21.0	26.4	17.6	23.7	14.6	24.4	21.7	19.2	22.1	28.9	22.2	13.4	27.8
	1994	24.2	17.7	21.0	16.8	24.6	16.9	22.6	25.3	25.7	20.4	18.4	24.9	33.6	23.1	15.6	25.4
	1995	23.6	13.9	20.3	20.6	19.5	13.8	15.2	22.8	24.5	15.5	19.2	23.7	26.6	21.1	15.8	26.6
	1996	23.0	12.7	19.7	18.9	20.1	16.9	26.8	15.5	24.0	22.1	16.9	21.8	27.2	21.7	15.8	26.8
	1997	22.0	15.7	19.2	14.1	30.4	22.5	16.5	21.6	22.4	18.5	18.3	20.4	24.7	23.8	16.2	23.5
	1998	22.7	13.7	16.9	12.8	24.8	19.4	31.9	13.0	23.0	18.1	20.9	22.0	25.6	26.4	19.2	22.9
	1999	19.9	9.6	15.8	15.1	22.1	13.7	16.3	18.6	21.0	17.4	17.9	17.6	22.3	17.1	13.8	20.9
2000	18.4	15.0	19.1	14.6	17.6	13.9	8.8	15.2	18.9	12.0	13.7	19.1	23.8	21.8	13.3	17.5	

* Number of pregnancies per 1,000 females in specified group.

**TABLE 10
PREGNANCIES AND PREGNANCY RATES, FEMALES 19 OR LESS YEARS OLD
BY COUNTY OF RESIDENCE, ARIZONA, 2000**

County of residence	NUMBER OF PREGNANCIES*				
	All 19 years or younger	10-14 years	15-19 years, total	15-19 years	
				15-17 years	18-19 years
Apache	215	3	212	91	121
Cochise	338	10	328	126	202
Coconino	283	2	281	109	172
Gila	147	1	146	52	94
Graham	88	1	87	31	56
Greenlee	18	0	18	5	13
Maricopa	8,577	171	8,406	3,019	5,387
Mohave	314	3	311	91	220
Navajo	331	5	326	106	220
Pima	2361	57	2,304	806	1,498
Pinal	565	15	550	218	332
Santa Cruz	135	2	133	61	72
Yavapai	334	5	329	106	223
Yuma	514	2	512	172	340
La Paz	38	1	37	14	23
TOTAL STATE**	14,287	278	14,009	5,016	9,883

County of residence	PREGNANCY RATES***				
	All 19 years or younger	10-14 years	15-19 years, total	15-19 years	
				15-17 years	18-19 years
Apache	29.2	.7	64.0	41.1	109.9
Cochise	38.7	2.2	76.8	47.6	124.5
Coconino	28.6	.4	54.8	38.6	74.7
Gila	41.1	.5	89.0	48.2	167.3
Graham	28.8	.7	54.6	37.0	74.1
Greenlee	26.7	.0	54.5	22.2	123.8
Maricopa	40.7	1.6	81.9	49.9	127.8
Mohave	33.5	.6	70.4	32.0	139.7
Navajo	34.8	1.0	74.3	35.8	154.1
Pima	39.6	2.0	74.5	48.5	104.7
Pinal	47.7	2.4	98.7	62.1	161.0
Santa Cruz	39.3	1.1	84.0	58.7	132.1
Yavapai	33.0	1.0	66.7	33.7	124.9
Yuma	42.0	.3	88.4	48.9	149.8
La Paz	32.6	1.7	65.5	36.5	127.1
TOTAL STATE	39.5	1.5	79.1	48.1	135.8

* The sum of live births, fetal deaths and abortions.

** Includes records with unknown county of residence.

*** The number of pregnancies per 1,000 females in specified group.

**TABLE 11
PREGNANCY RATES¹ AND NUMBER OF LIVE BIRTHS,
FETAL DEATHS AND ABORTIONS TO TEENS BY INDIVIDUAL AGE,
ARIZONA, 2000**

					TOTAL PREGNANCIES	
Age	Population	Live births	Stillbirths (Fetal deaths)	Abortions	Number	Rate
10	38,779	0	0	1	1	*0.0
11	36,900	0	0	0	0	0.0
12	36,623	4	2	2	8	0.2
13	35,920	37	2	10	49	1.4
14	35,925	175	1	44	220	6.1
10-14	184,147	216	5	57	278	1.5
15	35,222	647	10	108	765	21.7
16	34,159	1,376	13	218	1,607	47.0
17	34,963	2,261	25	358	2,644	75.6
15-17	104,344	4,284	48	684	5,016	48.1
18	35,944	3,338	27	587	3,952	109.9
19	36,826	4,351	30	660	5,041	136.9
18-19	72,770	7,689	57	1,247	8,993	123.6
Total 10-19	361,261	12,189	110	1,988	14,287	39.5

¹ Rates per 1,000 female population in specific group.

* Quantity equal or less than 0.05.

**TABLE 12
BIRTHS TO FEMALES 19 OR LESS YEARS OLD BY AGE AND COUNTY OF RESIDENCE,
ARIZONA, 2000**

	Age								
	Total	12	13	14	15	16	17	18	19
TOTAL STATE	12,189	4	37	175	647	1,376	2,261	3,338	4,351
APACHE	214	0	0	3	13	30	48	51	69
COCHISE	291	0	2	7	22	38	50	68	104
COCONINO	237	0	0	1	13	29	46	72	76
GILA	144	0	1	0	6	16	28	51	42
GRAHAM	84	0	0	1	3	7	20	18	35
GREENLEE	17	0	0	0	0	3	2	6	6
MARICOPA	7,212	3	25	108	379	813	1,364	1,959	2,561
MOHAVE	314	0	1	2	5	34	52	91	129
NAVAJO	320	0	0	5	19	30	52	95	119
PIMA	1,848	0	5	30	100	197	322	505	689
PINAL	542	1	2	10	36	62	111	160	160
SANTA CRUZ	126	0	0	2	6	21	29	31	37
YAVAPAI	300	0	1	3	12	32	47	89	116
YUMA	500	0	0	2	31	59	81	126	201
LA PAZ	36	0	0	1	1	5	7	15	7
UNKNOWN	4	0	0	0	1	0	2	1	0

**TABLE 13
ABORTIONS TO FEMALES 19 OR LESS YEARS OLD BY AGE AND COUNTY OF RESIDENCE,
ARIZONA, 2000**

	Total	Age								
		10	12	13	14	15	16	17	18	19
TOTAL STATE	1,988	1	2	10	44	108	218	358	587	660
APACHE	1	0	0	0	0	0	0	0	1	0
COCHISE	44	0	0	0	1	2	3	11	13	14
COCONINO	46	0	0	0	1	3	7	11	8	16
GILA	3	0	0	0	0	0	1	1	0	1
GRAHAM	4	0	0	0	0	0	1	0	2	1
GREENLEE	1	0	0	0	0	0	0	0	1	0
MARICOPA	1,296	1	0	6	24	70	138	228	392	437
NAVAJO	5	0	0	0	0	0	1	1	2	1
PIMA	488	0	2	4	15	29	59	85	138	156
PINAL	19	0	0	0	2	0	4	3	5	5
SANTA CRUZ	8	0	0	0	0	0	0	4	1	3
YAVAPAI	33	0	0	0	1	4	3	7	10	8
YUMA	14	0	0	0	0	0	1	0	6	7
LA PAZ	1	0	0	0	0	0	0	1	0	0
UNKNOWN	25	0	0	0	0	0	0	6	8	11

TABLE 14
SOURCES OF PAYMENT FOR LABOR AND DELIVERY, FEMALES 19 OR LESS YEARS
OLD BY COUNTY OF RESIDENCE, ARIZONA, 2000

	Total	Payee for birth				
		AHCCCS	IHS	Private insurance	Self	Unknown
TOTAL STATE	12,189	8,572	285	2,634	369	329
APACHE	214	124	47	4	1	38
COCHISE	291	201	1	75	8	6
COCONINO	237	149	57	23	3	5
GILA	144	90	41	13	0	0
GRAHAM	84	56	14	12	0	2
GREENLEE	17	9	0	8	0	0
MARICOPA	7,212	5,205	39	1,604	196	168
MOHAVE	314	243	0	41	11	19
NAVAJO	320	222	53	29	3	13
PIMA	1,848	1,195	23	522	66	42
PINAL	542	355	8	158	9	12
SANTA CRUZ	126	95	0	13	15	3
YAVAPAI	300	249	0	44	2	5
YUMA	500	356	2	84	54	4
LA PAZ	36	22	0	4	0	10
UNKNOWN	4	1	0	0	1	2

TABLE 15
SOURCES OF PAYMENT FOR LABOR AND DELIVERY, FEMALES 19 OR LESS YEARS OLD
BY AGE GROUP, ARIZONA, 2000

			Total	Mother's age group		
				<15	15-17	18-19
Total			12,189	216	4,284	7,689
Payee for birth	AHCCCS	Count	8,572	167	3,071	5,334
		Percent	70.3%	77.3%	71.7%	69.4%
	IHS	Count	285	3	109	173
		Percent	2.3%	1.4%	2.5%	2.2%
	Private insurance	Count	2,634	25	838	1,771
		Percent	21.6%	11.6%	19.6%	23.0%
	Self	Count	369	8	143	218
		Percent	3.0%	3.7%	3.3%	2.8%
	Unknown	Count	329	13	123	193
		Percent	2.7%	6.0%	2.9%	2.5%

**TABLE 16
TEENAGE BIRTHS BY NUMBER OF PREVIOUS PREGNANCIES BY AGE GROUP,
ARIZONA, 2000**

			Total	Mother's age group		
				<15	15-17	18-19
Total			12,189	216	4,284	7,689
Total prior pregnancies	None	Count	8,765	210	3,615	4,940
		Percent	71.9%	97.2%	84.4%	64.2%
	1	Count	2,591	5	553	2,033
		Percent	21.3%	2.3%	12.9%	26.4%
	2	Count	622	0	84	538
		Percent	5.1%	.0%	2.0%	7.0%
	3	Count	125	0	10	115
		Percent	1.0%	.0%	.2%	1.5%
	4 or more	Count	36	0	2	34
		Percent	.3%	.0%	.0%	.4%
Unknown	Count	50	1	20	29	
	Percent	.4%	.5%	.5%	.4%	

**TABLE 17
TEENAGE BIRTHS BY MARITAL STATUS AND AGE GROUP, ARIZONA, 2000**

			Total	Mother's age group		
				<15	15-17	18-19
Total			12,189	216	4,284	7,689
Marital status	Married	Count	2,353	1	431	1,921
		Percent	19.3%	.5%	10.1%	25.0%
	Unmarried	Count	9,805	215	3,847	5,743
		Percent	80.4%	99.5%	89.8%	74.7%
	Other	Count	31	0	6	25
		Percent	.3%	.0%	.1%	.3%

**TABLE 18
TEENAGE BIRTHS BY MOTHER'S EDUCATION AND AGE GROUP,
ARIZONA, 2000**

			Total	Mother's age group		
				<15	15-17	18-19
Total			12,189	216	4,284	7,689
Mother's education	<8	Count	742	65	282	395
		Percent	6.1%	30.1%	6.6%	5.1%
	8	Count	943	95	487	361
		Percent	7.7%	44.0%	11.4%	4.7%
	9-11	Count	6,227	50	3,018	3,159
		Percent	51.1%	23.1%	70.4%	41.1%
	12	Count	3,413	0	387	3,026
		Percent	28.0%	.0%	9.0%	39.4%
	13-16	Count	606	0	17	589
		Percent	5.0%	.0%	.4%	7.7%
	Unknown	Count	258	6	93	159
		Percent	2.1%	2.8%	2.2%	2.1%

**TABLE 19
TEENAGE BIRTHS BY TRIMESTER OF ENTRY INTO PRENATAL CARE AND
AGE GROUP, ARIZONA, 2000**

		Total	Mother's age group		
			<15	15-17	18-19
Total		12,189	216	4,284	7,689
No care	Count	371	8	149	214
	Percent	3.0%	3.7%	3.5%	2.8%
1st trimester	Count	7,516	87	2,460	4,969
	Percent	61.7%	40.3%	57.4%	64.6%
2nd trimester	Count	3,085	83	1,186	1,816
	Percent	25.3%	38.4%	27.7%	23.6%
3rd trimester	Count	892	28	362	502
	Percent	7.3%	13.0%	8.5%	6.5%
Unknown	Count	325	10	127	188
	Percent	2.7%	4.6%	3.0%	2.4%

**TABLE 20
TEENAGE BIRTHS BY NUMBER OF PRENATAL VISITS AND AGE GROUP,
ARIZONA, 2000**

			Total	Mother's age group		
				<15	15-17	18-19
Total			12,189	216	4,284	7,689
Number of prenatal visits	No visits	Count	371	8	149	214
		Percent	3.0%	3.7%	3.5%	2.8%
	1-4 visits	Count	864	20	328	516
		Percent	7.1%	9.3%	7.7%	6.7%
	5-8 visits	Count	2,532	61	979	1,492
		Percent	20.8%	28.2%	22.9%	19.4%
	9-12 visits	Count	4,713	68	1,603	3,042
		Percent	38.7%	31.5%	37.4%	39.6%
	13+ visits	Count	3,080	44	981	2,055
		Percent	25.3%	20.4%	22.9%	26.7%
	Unknown	Count	629	15	244	370
		Percent	5.2%	6.9%	5.7%	4.8%

**TABLE 21
TOBACCO AND/OR ALCOHOL USE DURING PREGNANCY AMONG FEMALES
19 OR LESS YEARS OLD BY AGE GROUP, ARIZONA, 2000**

			Total	Mother's age group		
				<15	15-17	18-19
Total			12,189	216	4,284	7,689
Substance use	Drinker, nonsmoker	Count	32	0	10	22
		Percent	.3%	.0%	.2%	.3%
	Smoker, nondrinker	Count	872	12	225	635
		Percent	7.2%	5.6%	5.3%	8.3%
	Smoker and drinker	Count	65	2	26	37
		Percent	.5%	.9%	.6%	.5%
	Nonsmoker nondrinker	Count	11,220	202	4,023	6,995
		Percent	92.1%	93.5%	93.9%	91.0%

**TABLE 22
RISK FOR LOW-BIRTHWEIGHT (LBW) BIRTHS BY SELECTED CHARACTERISTICS
OF FEMALES 19 OR LESS YEARS OLD, ARIZONA, 2000**

		Mother's age group								
		<15			15-17			18-19		
		Total births	LBW births		Total births	LBW births		Total births	LBW births	
		Count	Count	Percent	Count	Count	Percent	Count	Count	Percent
Race/ ethnicity	White non Hispanic	38	5	13.2%	1040	90	8.7%	2681	231	8.6%
	Hispanic	144	14	9.7%	2567	246	9.6%	3837	280	7.3%
	Black	12	1	8.3%	198	29	14.6%	362	53	14.6%
	American Indian	20	0	.0%	405	22	5.4%	664	46	6.9%
	Asian	1	0	.0%	29	5	17.2%	70	7	10.0%
	Unknown	1	0	.0%	45	4	8.9%	75	3	4.0%
Substance use	Drinker, nonsmoker	0	0	.0%	10	1	10.0%	22	3	13.6%
	Smoker, nondrinker	12	0	.0%	225	29	12.9%	635	82	12.9%
	Smoker and drinker	2	0	.0%	26	2	7.7%	37	3	8.1%
	Nonsmoker and nondrinker	202	20	9.9%	4023	364	9.0%	6995	532	7.6%
Payee for birth	AHCCCS	167	12	7.2%	3071	280	9.1%	5334	439	8.2%
	IHS	3	0	.0%	109	7	6.4%	173	11	6.4%
	Private insurance	25	2	8.0%	838	78	9.3%	1771	132	7.5%
	Self	8	2	25.0%	143	19	13.3%	218	20	9.2%
	Unknown	13	4	30.8%	123	12	9.8%	193	18	9.3%
Length of gestation	37 weeks or less	52	16	30.8%	830	308	37.1%	1426	493	34.6%
	More than 37 weeks	160	4	2.5%	3432	87	2.5%	6231	122	2.0%
	Unknown	4	0	.0%	22	1	4.5%	32	5	15.6%
Prenatal Visits	<5 visits	28	8	28.6%	477	80	16.8%	730	106	14.5%
	5 or more visits	173	9	5.2%	3563	282	7.9%	6589	479	7.3%
	Unknown	15	3	20.0%	244	34	13.9%	370	35	9.5%

Low birthweight: Any neonate weighing less than 2,500 grams (less than 5 pounds 8 ounces).

TABLE 23
LIVE BIRTHS TO FEMALES 19 OR LESS YEARS OF AGE AS PERCENTAGE OF TOTAL
LIVE BIRTHS BY AREA, ETHNIC GROUP AND YEAR, ARIZONA, 1990-2000

Group	1990	1991	1992	1993	1994	1995	1996	1997	1998	1999	2000
ARIZONA, TOTAL¹											
# Births (all ages)	68,814	68,040	68,675	69,037	70,896	72,386	75,094	75,563	77,940	80,505	84,985
# Births to Teenagers	9,767	10,108	10,307	10,438	10,858	10,973	11,247	11,085	11,695	11,963	12,189
% Births to Teenagers	14.2	14.9	15.0	15.1	15.3	15.2	15.0	14.7	15.0	14.9	14.3
URBAN COUNTIES²											
# Births (all ages)	54,274	53,759	54,391	54,627	58,733	60,293	62,879	63,510	65,825	68,611	72,596
# Births to Teenagers	7,330	7,653	7,852	7,887	8,862	8,956	9,234	9,076	9,605	9,896	10,102
% Births to Teenagers	13.5	14.2	14.4	14.4	15.1	14.9	14.7	14.3	14.6	14.4	13.9
RURAL COUNTIES											
# Births (all ages)	14,540	14,281	14,284	14,410	12,163	12,093	12,215	12,053	12,115	11,877	12,333
# Births to Teenagers	2,437	2,455	2,455	2,551	1,996	2,017	2,009	2,009	2,090	2,067	2,083
% Births to Teenagers	16.8	17.2	17.2	17.7	16.4	16.7	16.4	16.7	17.3	17.4	16.9
WHITE³											
# Births (all ages)	39,733	38,213	37,727	37,381	37,780	38,488	38,494	37,869	38,611	38,711	39,850
# Births to Teenagers	4,116	4,061	4,060	4,024	4,023	4,042	4,033	3,733	3,843	3,869	3,759
% Births to Teenagers	10.4	10.3	10.8	10.8	10.6	10.5	10.5	9.9	10.0	10.0	9.4
HISPANIC											
# Births (all ages)	19,321	20,231	21,553	22,247	23,724	25,141	27,396	27,941	28,824	30,784	33,893
# Births to Teenagers	3,941	4,255	4,543	4,688	5,075	5,351	5,628	5,736	5,951	6,161	6,548
% Births to Teenagers	20.4	21.0	21.1	21.1	21.4	21.3	20.5	20.5	20.6	20.0	19.3
BLACK											
# Births (all ages)	2,562	2,518	2,447	2,402	2,477	2,233	2,336	2,485	2,629	2,699	2,760
# Births to Teenagers	562	620	570	581	576	491	498	519	586	603	572
% Births to Teenagers	21.9	24.6	23.3	24.2	23.3	22.0	21.3	20.9	22.3	22.3	20.7
AMERICAN INDIAN											
# Births (all ages)	6,231	6,076	5,872	5,781	5,513	5,086	5,328	5,271	5,460	5,295	5,602
# Births to Teenagers	1,101	1,102	1,080	1,060	1,095	991	996	971	1,122	1,050	1,089
% Births to Teenagers	17.7	18.1	18.4	18.3	19.9	19.5	18.6	18.4	20.6	19.8	19.4

¹ Includes records for ethnic groups other than White, Hispanic, Black or American Indian.

² Prior to 1990, Maricopa and Pima Counties were delineated as urbanized areas in Arizona. Beginning in 1990, Yuma County, and in 1993 Pinal County, met the criteria and were classified as urban. The remaining counties comprise Arizona's rural areas.

³ Not of Hispanic origin.

**TABLE 24
BIRTH RATES BY AGE GROUP FOR FEMALES 19 OR LESS YEARS OLD,
ARIZONA AND UNITED STATES, 1990-2000**

Year	Under 15 Years		15-19 Years Old					
			Total		15-17 Years		18-19 Years	
	AZ	U.S.	AZ	U.S.	AZ	U.S.	AZ	U.S.
1990	1.5	1.4	75.6	59.9	47.6	37.5	113.5	88.6
1991	1.5	1.4	77.7	62.1	50.4	38.7	110.2	94.4
1992	1.4	1.4	75.9	60.7	50.7	37.8	114.1	94.5
1993	1.3	1.4	82.1	59.6	51.2	37.8	116.4	92.1
1994	1.7	1.4	82.8	58.9	53.0	37.6	118.5	91.5
1995	1.6	1.3	79.1	56.8	50.1	36.0	117.1	89.1
1996	1.4	1.2	76.1	54.4	49.0	33.8	119.0	86.0
1997	1.4	1.1	72.8	52.3	46.1	32.1	114.9	83.6
1998	1.4	1.0	73.9	51.1	47.0	30.4	114.9	82.0
1999	1.4	0.9	72.9	49.6	43.7	28.7	117.1	80.3
2000	1.5	0.9	67.6	48.7	41.1	27.5	105.7	79.5

Note: The U.S. data are from Martin JA, Hamilton BE, Ventura SJ. Births: Preliminary Data for 2000. National Vital Statistics Reports; vol. 49 no 5. Hyattsville, Maryland. National Center for Health Statistics, July 24, 2001.

**TABLE 25
REPEAT PREGNANCIES AMONG TEENAGE MOTHERS GIVING BIRTH BY AGE AND YEAR,
ARIZONA, 1990-2000**

Mother's Age			YEAR OF BIRTH										
			1990	1991	1992	1993	1994	1995	1996	1997	1998	1999	2000
11	Total		1	2	0	0	1	0	1	1	0	0	0
	Previous pregnancies	None	0	1	0	0	1	0	1	1	0	0	0
		One or more	1	1	0	0	0	0	0	0	0	0	0
12	Total		3	4	1	2	3	6	3	4	5	2	4
	Previous pregnancies	None	2	2	1	2	3	6	3	4	4	2	0
		One or more	1	2	0	0	0	0	0	0	1	0	0
13	Total		18	36	32	27	45	32	34	33	34	36	37
	Previous pregnancies	None	17	33	31	26	43	31	32	33	33	36	35
		One or more	1	3	1	1	2	1	2	0	1	0	2
14	Total		166	151	155	158	197	191	178	176	195	200	175
	Previous pregnancies	None	151	143	146	152	188	181	174	165	186	189	3172
		One or more	15	8	9	6	9	10	4	11	9	11	3
15	Total		471	549	561	555	664	649	658	598	651	595	647
	Previous pregnancies	None	418	481	517	512	601	588	613	553	597	559	604
		One or more	53	68	44	43	63	61	45	41	51	35	36
		Unknown	0	0	0	0	0	0	0	4	3	1	3
16	Total		1119	1227	1180	1303	1315	1337	1434	1363	1443	1388	1376
	Previous pregnancies	None	908	1021	985	1121	1126	1175	1239	1175	1261	1207	1205
		One or more	211	206	195	182	189	162	195	182	175	177	163
		Unknown	0	0	0	0	0	0	0	6	7	4	8
17	Total		1833	1950	2097	2012	2153	2192	2248	2258	2303	2253	2261
	Previous pregnancies	None	1366	1449	1559	1507	1669	1710	1778	1729	1831	1772	1806
		One or more	467	501	538	505	484	482	470	516	463	475	447
		Unknown	0	0	0	0	0	0	0	13	9	6	8
18	Total		2585	2739	2848	2862	2865	3005	2926	2902	3153	3300	3338
	Previous pregnancies	None	1660	1713	1839	1864	1911	2050	2032	1951	2138	2247	2313
		One or more	924	1026	1009	998	954	955	894	939	1002	1041	1014
		Unknown	1	0	0	0	0	0	0	12	13	12	11
19	Total		3571	3450	3433	3519	3615	3561	3765	3750	3911	4189	4351
	Previous pregnancies	None	1943	1931	1961	1983	2117	2149	2194	2180	2284	2485	2627
		One or more	1628	1519	1472	1536	1498	1412	1571	1554	1606	1680	1706
		Unknown	0	0	0	0	0	0	0	16	21	24	18

Note: the numbers of Arizona's teen births for 1997-1999 were revised in May 2001 and differ from those previously published.

**TABLE 26
CUMULATIVE NUMBER OF MOTHERS WHO WERE 19 OR
LESS YEARS OLD IN ARIZONA IN 2000**

Year Baby Was Born	MOTHER'S AGE WHEN BABY WAS BORN										Mother was 19 or younger in 2000
	10	11	12	13	14	15	16	17	18	19	
1991	0										0
1992	0	0									0
1993	0	0	2								2
1994	0	1	3	45							49
1995	0	0	6	32	191						229
1996	0	1	3	34	178	658					874
1997	0	1	4	33	176	598	1,363				2,175
1998	0	0	5	34	195	651	1,443	2,303			4,631
1999	0	0	2	36	200	595	1,388	2,253	3,300		7,774
2000	0	0	4	37	175	647	1,376	2,261	3,338	4,351	12,189
Cumulative number of mothers 19 or younger	0	3	29	251	1,115	3,149	5,570	6,817	6,638	4,351	27,923

NOTE: The above table focuses on the 2000 cohort of Arizona mothers who were 19 or less years old that year. Among them are those who:

- gave birth to the 12,189 babies in 2000
- gave birth to a baby prior to 2000 and were still 19 or less years old in 2000.

The numbers below the main diagonal (and below the stair-like line) represent the number of mothers meeting either one of the above criteria. The last column to the right gives the cumulative total for 2000 by the year baby was born. For example, from among those girls and adolescents who had their baby in 1994, 49 remained in their teens in 2000. The bottom row gives the cumulative total by mother's age when baby was born. For example, among the 27,923 mothers under 20 in Arizona in 2000, 1,115 had given birth when 14 years old.

Excluded from the cumulative totals and not shown above the main diagonal (and above stair-like line) are the numbers of mothers who were 19 years old when the baby was born, but who were no longer under the age 20 by 2000. For example, mothers who were 11 years old in 1990 were 20 years old in 2000.

The figures in Appendix C are unadjusted for in-and-out migration, as well as mortality of mothers, in the period of 1991-2000.

**TABLE 27
POPULATION OF FEMALES 19 OR LESS YEARS OLD, NUMBER OF
PREGNANCIES AND PREGNANCY RATES BY AGE GROUP AND
RACE/ETHNICITY, ARIZONA, 2000**

	POPULATION*				
	All 19 years or younger	10-14 years	15-19 years total	15-19 years	
				15-17 years	18-19 years
White non-Hispanic	190,873	95,721	95,152	55,715	39,437
Hispanic	118,490	61,219	57,271	33,608	23,663
Black	13,331	7,040	6,291	3,769	2,522
American Indian	27,725	14,801	12,924	8,075	4,849
Asian	6,377	2,985	3,392	1,869	1,523
ALL GROUPS	361,261	184,147	177,114	104,344	72,770

	NUMBER OF PREGNANCIES				
	All 19 years or younger	10-14 years	15-19 years total	15-19 years	
				15-17 years	18-19 years
White non-Hispanic	4,814	65	4,749	1,397	3,352
Hispanic	7,213	168	7,045	2,823	4,222
Black	692	17	675	242	433
American Indian	1,144	23	1,121	421	700
Asian	136	1	135	40	95
ALL GROUPS	14,287	278	14,009	5,016	8,993

	PREGNANCY RATES**				
	All 19 years or younger	10-14 years	15-19 years total	15-19 years	
				15-17 years	18-19 years
White non-Hispanic	25.2	.7	49.9	25.1	85.0
Hispanic	60.9	2.7	123.0	84.0	178.4
Black	51.9	2.4	107.3	64.2	171.7
American Indian	41.3	1.6	86.7	52.1	144.4
Asian	21.3	.3	39.8	21.4	62.4
ALL GROUPS	39.5	1.5	79.1	48.1	123.6

* Census 2000 data for Arizona.

** Number of pregnancies per 1,000 females in specified group.

**TABLE 28
POPULATION OF FEMALES 19 OR LESS YEARS OLD
BY COUNTY OF RESIDENCE, ARIZONA, 2000**

County of residence	All 19 years or younger	10-14 years	15-19 years, total	15-19 years	
				15-17 years	18-19 years
Apache	7,362	4,049	3,313	2,212	1,101
Cochise	8,738	4,466	4,272	2,649	1,623
Coconino	9,892	4,764	5,128	2,825	2,303
Gila	3,580	1,939	1,641	1,079	562
Graham	3,056	1,462	1,594	838	756
Greenlee	674	344	330	225	105
Maricopa	210,644	107,992	102,652	60,492	42,160
Mohave	9,382	4,965	4,417	2,842	1,575
Navajo	9,515	5,130	4,385	2,957	1,428
Pima	59,610	28,670	30,940	16,627	14,313
Pinal	11,847	6,273	5,574	3,512	2,062
Santa Cruz	3,437	1,853	1,584	1,039	545
Yavapai	10,118	5,189	4,929	3,143	1,786
Yuma	12,239	6,449	5,790	3,520	2,270
La Paz	1,167	602	565	384	181
TOTAL STATE	361,261	184,147	177,114	104,344	72,770

Source: Census 2000.

Appendix

Revised Numbers and Rates of Teen Births and Pregnancies for 1997-1999 The numbers and rates of Arizona's teen births and pregnancies for 1997-1999 were revised in May 2001 and differ from those previously published (see attached tables). The determination of teenage motherhood is based on mother's age at her last birthday. Since mother's age is not reported on the birth certificate, it had been computer-generated from the mother's date of birth and child's date of birth by the Information Technology developers of ADHS birth certificate databases. Our re-examination proved that some of the births in 1997-1999 were misallocated into the next highest mother's age category rather than into the next lowest (a mother who is 19 years and 8 months old is still 19 - not 20 - years old at the time of her child's birth). The revision reflects correction for undercounting of births to teens. Beginning in January 2000, mother's age is no longer a computer-generated field in the birth database. The user calculates it.

The following data tables are available in the Appendix:

A Teen births by race/ethnicity

B Teen birth rates by race/ethnicity

C Teen births by county of residence

D Teen birth rates by county of residence

E Teen pregnancies by race/ethnicity

F Teen pregnancy rates by race/ethnicity

G Teen pregnancies by county of residence

H Teen pregnancy rates by county of residence

Prepared and made Web-ready by:

Christopher K. Mrela, Ph.D., Assistant Registrar of Vital Statistics,
Trentham Coe, Senior Research Data Analyst

**APPENDIX A.
TEEN BIRTHS BY RACE/ETHNICITY FOR SELECTED AGE GROUPS:**

Revised*for 1997-1999

		All 19 years or younger	10-14 years	15-19 years	15-17 years	18-19 years	10-17 years
1997	White non-Hispanic	3733	27	3706	1239	2467	1266
	Hispanic	5736	146	5590	2329	3261	2475
	Black	519	13	506	207	299	220
	American Indian	971	25	946	407	539	432
	Asian	83	2	81	21	60	23
	ALL GROUPS	11085	214	10871	4219	6652	4433
1998	White non-Hispanic	3843	38	3805	1261	2544	1299
	Hispanic	5951	142	5809	2419	3390	2561
	Black	586	16	570	223	347	239
	American Indian	1122	31	1091	429	662	460
	Asian	82	2	80	27	53	29
	ALL GROUPS	11695	234	11461	4397	7064	4631
1999	White non-Hispanic	3869	31	3838	1115	2723	1146
	Hispanic	6161	149	6012	2415	3597	2564
	Black	603	14	589	222	367	236
	American Indian	1050	38	1012	389	623	427
	Asian	108	1	107	28	79	29
	ALL GROUPS	11963	238	11725	4236	7489	4474

Note: The data for 1997-1999 were revised in May 2001. The totals for all groups include records with unknown race/ethnicity.

**APPENDIX B.
TEEN BIRTH RATES BY RACE/ETHNICITY FOR SELECTED AGE GROUPS:**

Revised for 1997-1999

		All 19 years or younger	10-14 years	15-19 years	15-17 years	18-19 years	10-17 years
1997	White non-Hispanic	20.7	.3	41.7	22.8	71.1	8.7
	Hispanic	71.6	3.5	143.9	98.4	215.1	38.1
	Black	38.7	1.8	79.5	52.6	123.1	20.0
	American Indian	37.0	1.7	79.2	53.4	124.6	19.7
	Asian	12.1	.6	2.4	10.4	47.8	4.1
	ALL GROUPS	36.1	1.4	72.8	46.1	114.9	17.8
1998	White non-Hispanic	20.6	.4	41.2	22.7	69.0	8.7
	Hispanic	71.9	3.3	144.1	99.9	210.6	38.4
	Black	42.3	2.2	86.2	55.3	134.7	21.2
	American Indian	41.3	2.1	87.9	55.0	144.3	20.4
	Asian	11.6	.5	23.5	13.0	39.8	5.0
	ALL GROUPS	36.9	1.4	73.9	47.0	114.9	18.1
1999	White non-Hispanic	20.0	.3	40.1	19.4	71.0	7.4
	Hispanic	71.5	3.4	143.7	96.3	214.8	36.9
	Black	41.8	1.8	85.9	53.2	136.9	20.1
	American Indian	37.1	2.5	78.6	48.1	130.6	18.2
	Asian	14.6	.3	30.3	13.0	57.0	4.8
	ALL GROUPS	36.2	1.4	72.9	43.7	117.1	16.8

Note: The data for 1997-1999 were revised in May 2001. The totals for all groups include records with unknown race/ethnicity. The rate is the number of births per 1,000 females in specified group.

**APPENIX C.
TEEN BIRTHS BY COUNTY OF RESIDENCE FOR SELECTED AGE GROUPS:**

Revised* for 1997-1999

		19 years or younger	10-14 years	15-19 years	15-17 years	18-19 years	10-17 years
1997	APACHE	212	6	206	84	122	90
	COCHISE	300	1	299	115	184	116
	COCONINO	231	2	229	85	144	87
	GILA	150	1	149	54	95	55
	GRAHAM	108	1	107	45	62	46
	GREENLEE	35	1	34	9	25	10
	MARICOPA	6507	140	6367	2519	3848	2659
	MOHAVE	310	2	308	108	200	110
	NAVAJO	268	3	265	105	160	108
	PIMA	1645	28	1617	587	1030	615
	PINAL	468	13	455	190	265	203
	SANTA CRUZ	121	2	119	49	70	51
	YAVAPAI	224	4	220	84	136	88
	YUMA	456	8	448	168	280	176
	LA PAZ	49	2	47	17	30	19
	UNKNOWN	1	0	1	0	1	0
Total	11085	214	10871	4219	6652	4433	
1998	APACHE	216	2	214	79	135	81
	COCHISE	272	4	268	95	173	99
	COCONINO	227	4	223	68	155	72
	GILA	152	3	149	63	86	66
	GRAHAM	103	1	102	43	59	44
	GREENLEE	32	1	31	17	14	18
	MARICOPA	6884	136	6748	2568	4180	2704
	MOHAVE	300	5	295	104	191	109
	NAVAJO	316	7	309	119	190	126
	PIMA	1767	38	1729	677	1052	715
	PINAL	506	16	490	203	287	219
	SANTA CRUZ	134	3	131	58	73	61
	YAVAPAI	290	6	284	110	174	116
	YUMA	448	7	441	176	265	183
	LA PAZ	43	1	42	13	29	14
	UNKNOWN	5	0	5	4	1	4
Total	11695	234	11461	4397	7064	4631	
1999	APACHE	174	3	171	53	118	56
	COCHISE	300	5	295	102	193	107
	COCONINO	247	6	241	88	153	94
	GILA	150	8	142	55	87	63
	GRAHAM	86	2	84	30	54	32
	GREENLEE	29	1	28	10	18	11
	MARICOPA	7106	139	6967	2574	4393	2713
	MOHAVE	312	6	306	103	203	109
	NAVAJO	330	10	320	110	210	120
	PIMA	1839	36	1803	618	1185	654
	PINAL	505	14	491	191	300	205
	SANTA CRUZ	127	0	127	43	84	43
	YAVAPAI	277	1	276	86	190	87
	YUMA	446	5	441	157	284	162
	LA PAZ	32	2	30	14	16	16
	UNKNOWN	3	0	3	2	1	2
Total	11963	238	11725	4236	7489	4474	

* The data for 1997-1999 were revised in May 2001.

**APPENDIX D.
TEEN BIRTH RATES BY COUNTY OF RESIDENCE FOR SELECTED AGE GROUPS:**

Revised* for 1997-1999

		19 years or younger	10-14 years	15-19 years	15-17 years	18-19 years	10-17 years
1997	APACHE	29.9	1.6	60.6	39.2	97.2	15.4
	COCHISE	34.9	.2	74.5	43.0	137.6	16.7
	COCONINO	25.3	.5	46.9	30.3	69.6	12.3
	GILA	43.8	.6	86.9	49.7	151.3	19.7
	GRAHAM	38.4	.7	75.9	51.7	114.8	20.3
	GREENLEE	43.6	2.5	86.1	34.6	185.2	15.0
	MARICOPA	37.1	1.5	76.0	49.1	118.3	18.7
	MOHAVE	42.3	.5	88.2	48.8	156.3	18.2
	NAVAJO	34.6	.7	71.9	45.9	114.4	17.0
	PIMA	31.5	1.1	61.3	37.0	97.9	14.7
	PINAL	43.7	2.3	89.7	59.2	142.4	23.0
	SANTA CRUZ	40.7	1.3	80.6	54.6	120.9	21.3
	YAVAPAI	27.2	1.0	53.4	32.4	89.1	13.1
	YUMA	46.2	1.6	95.0	55.9	163.7	21.6
	LA PAZ	43.2	3.5	83.8	48.0	144.9	20.5
	Total	36.1	1.4	72.8	46.1	114.9	18.2
1998	APACHE	29.7	.5	61.5	36.3	103.4	13.6
	COCHISE	31.1	.9	60.8	35.1	101.5	14.1
	COCONINO	24.5	.9	44.9	24.4	71.1	10.2
	GILA	43.4	1.7	84.4	58.2	126.1	23.4
	GRAHAM	35.3	.7	71.0	47.9	109.3	18.5
	GREENLEE	39.6	2.5	77.5	67.7	94.0	27.3
	MARICOPA	37.9	1.4	77.1	48.8	120.0	18.4
	MOHAVE	39.4	1.3	80.9	45.9	138.4	17.5
	NAVAJO	40.7	1.7	83.1	51.3	135.8	19.8
	PIMA	32.9	1.4	63.3	41.8	94.7	16.8
	PINAL	46.0	2.8	92.9	61.1	147.1	24.2
	SANTA CRUZ	44.4	1.9	88.5	65.8	121.9	25.2
	YAVAPAI	34.1	1.4	66.2	41.5	106.2	16.9
	YUMA	44.6	1.4	90.9	57.3	148.7	22.2
	LA PAZ	37.4	1.7	36.6	22.5	50.7	12.1
	Total	36.9	1.4	73.9	47.0	114.9	18.1
1999	APACHE	23.5	.8	48.7	24.5	87.6	9.2
	COCHISE	32.8	1.1	63.8	36.4	106.2	14.6
	COCONINO	26.1	1.4	47.8	31.4	68.2	13.0
	GILA	40.3	4.3	75.9	48.0	119.7	21.0
	GRAHAM	27.1	1.2	54.1	31.8	88.2	12.5
	GREENLEE	34.9	2.4	68.3	39.2	116.1	16.3
	MARICOPA	37.6	1.4	77.0	46.9	123.3	17.7
	MOHAVE	39.5	1.5	80.4	43.9	138.8	17.0
	NAVAJO	39.8	2.3	81.2	45.2	139.1	17.7
	PIMA	33.2	1.3	64.0	37.5	101.5	14.9
	PINAL	42.6	2.3	86.8	54.7	138.5	21.2
	SANTA CRUZ	39.8	.0	83.3	47.1	137.0	16.7
	YAVAPAI	30.1	.2	59.1	30.1	104.9	11.8
	YUMA	44.2	1.0	87.7	51.1	145.0	19.9
	LA PAZ	28.3	3.6	52.4	39.8	72.7	17.5
	Total	36.2	1.4	72.9	43.7	117.1	16.8

* The data for 1997-1999 were revised in May 2001. The rate is the number of births per 1,000 females in specified group.

**APPENDIX E.
TEEN PREGNANCIES BY RACE/ETHNICITY FOR SELECTED AGE GROUPS**

Revised* for 1997-1999

		All 19 years or younger	10-14 years	15-19 years	15-17 years	18-19 years	10-17 years
1997	ALL GROUPS	13438	278	13160	5096	8064	5374
	White non-Hispanic	4978	61	4917	1699	3218	1760
	Hispanic	6378	167	6211	2569	3642	2736
	Black	631	13	618	250	368	263
	American Indian	1068	29	1039	439	600	468
	Asian	127	2	125	41	84	43
	Unknown	256	6	250	98	152	104
1998	ALL GROUPS	14532	316	14216	5482	8734	5798
	White non-Hispanic	5375	77	5298	1841	3457	1918
	Hispanic	6698	171	6527	2711	3816	2882
	Black	738	20	718	276	442	296
	American Indian	1207	33	1174	464	710	497
	Asian	135	2	133	50	83	52
	Unknown	379	13	366	140	226	153
1999	ALL GROUPS	14095	303	13792	4993	8799	5296
	White non-Hispanic	4915	61	4854	1505	3349	1566
	Hispanic	6701	165	6536	2598	3938	2763
	Black	709	21	688	254	434	275
	American Indian	1115	42	1073	408	665	450
	Asian	136	2	134	38	96	40
	Unknown	519	12	507	190	317	202

* Revised in May 2001.

**APPENDIX F.
PREGNANCY RATES* BY RACE/ETHNICITY FOR SELECTED AGE GROUPS:**

Revised for 1997-1999

		All 19 years or younger	10-14 years	15-19 years	15-17 years	18-19 years	10-17 years
White non- Hispanic	1997	27.7	.7	55.3	31.3	92.7	12.1
	1998	28.9	.8	57.4	33.2	93.7	12.9
	1999	25.4	.6	50.7	26.2	87.3	10.1
Hispanic	1997	79.6	4.0	159.9	108.5	240.2	42.1
	1998	80.9	4.0	161.9	111.9	237.0	43.2
	1999	77.7	3.7	156.2	103.6	235.2	39.8
Black	1997	43.4	2.1	89.1	57.6	140.0	22.0
	1998	46.5	2.2	95.0	61.3	147.8	23.3
	1999	46.4	2.2	95.1	58.5	152.2	22.2
American Indian	1997	42.5	1.9	91.2	60.6	145.2	22.3
	1998	47.9	2.5	101.9	63.2	168.1	23.5
	1999	40.9	3.0	86.1	51.7	144.8	19.8
Asian	1997	18.5	.6	38.1	20.2	67.0	7.7
	1998	19.0	.5	39.0	24.1	62.4	9.0
	1999	18.4	.5	37.9	17.7	69.3	6.7
ALL GROUPS	1997	43.8	1.8	88.1	55.7	139.3	21.6
	1998	45.8	2.0	91.7	58.6	142.1	22.7
	1999	42.7	1.8	85.7	51.5	137.6	19.9

* The pregnancy rates were revised in May 2001 and may differ from those previously published.

**APPENDIX G.
TEEN PREGNANCIES BY COUNTY OF RESIDENCE FOR SELECTED AGE GROUPS:**

Revised* for 1997-1999

		19 years or younger	10-14 years	15-19 years	15-17 years	18-19 years	10-17 years
1997	TOTAL STATE	13438	278	13160	5096	8064	5374
	APACHE	216	6	210	86	124	92
	COCHISE	342	2	340	132	208	134
	COCONINO	290	2	288	98	190	100
	GILA	154	1	153	56	97	57
	GRAHAM	116	1	115	50	65	51
	GREENLEE	37	2	35	9	26	11
	MARICOPA	7832	176	7656	3004	4652	3180
	MOHAVE	312	2	310	110	200	112
	NAVAJO	290	4	286	112	174	116
	PIMA	2252	46	2206	804	1402	850
	PINAL	501	13	488	205	283	218
	SANTA CRUZ	128	3	125	54	71	57
	YAVAPAI	267	4	263	105	158	109
	YUMA	480	8	472	184	288	192
LA PAZ	50	3	47	17	30	20	
UNKNOWN	171	5	166	70	96	75	
1998	TOTAL STATE	14532	316	14216	5482	8734	5798
	APACHE	220	2	218	80	138	82
	COCHISE	316	8	308	111	197	119
	COCONINO	260	4	256	87	169	91
	GILA	159	3	156	67	89	70
	GRAHAM	106	1	105	45	60	46
	GREENLEE	35	1	34	20	14	21
	MARICOPA	8527	174	8353	3196	5157	3370
	MOHAVE	305	5	300	108	192	113
	NAVAJO	326	7	319	126	193	133
	PIMA	2314	52	2262	887	1375	939
	PINAL	544	18	526	214	312	232
	SANTA CRUZ	146	3	143	61	82	64
	YAVAPAI	315	6	309	126	183	132
	YUMA	468	9	459	180	279	189
LA PAZ	45	1	44	14	30	15	
UNKNOWN	446	22	424	160	264	182	
1999	TOTAL STATE	14095	303	13792	4993	8799	5296
	APACHE	177	3	174	55	119	58
	COCHISE	326	6	320	110	210	116
	COCONINO	286	6	280	103	177	109
	GILA	154	9	145	57	88	66
	GRAHAM	93	2	91	33	58	35
	GREENLEE	29	1	28	10	18	11
	MARICOPA	8442	184	8258	3040	5218	3224
	MOHAVE	316	7	309	105	204	112
	NAVAJO	335	10	325	111	214	121
	PIMA	2153	42	2111	730	1381	772
	PINAL	532	15	517	201	316	216
	SANTA CRUZ	133	0	133	44	89	44
	YAVAPAI	310	2	308	100	208	102
	YUMA	467	5	462	165	297	170
LA PAZ	33	2	31	15	16	17	
UNKNOWN	309	9	300	114	186	123	

* The data for 1997-1999 were revised in May 2001.

**APPENDIX H.
TEEN PREGNANCY RATES BY COUNTY OF RESIDENCE FOR SELECTED AGE GROUPS:**

Revised* for 1997-1999

		19 years or younger	10-14 years	15-19 years	15-17 years	18-19 years	10-17 years
1997	TOTAL STATE	43.8	1.8	88.1	55.7	139.3	22.0
	APACHE	30.4	1.6	61.8	40.1	98.8	15.7
	COCHISE	39.8	.5	84.7	49.3	155.6	19.2
	COCONINO	31.7	.5	59.0	34.9	91.8	14.1
	GILA	45.0	.6	89.2	51.5	154.5	20.4
	GRAHAM	41.3	.7	81.6	57.5	120.4	22.5
	GREENLEE	46.1	4.9	88.6	34.6	192.6	16.5
	MARICOPA	44.6	1.9	91.4	58.6	143.0	22.4
	MOHAVE	42.6	.5	88.7	49.7	156.3	18.5
	NAVAJO	37.4	1.0	77.6	49.0	124.5	18.3
	PIMA	43.1	1.8	83.7	50.7	133.3	20.4
	PINAL	46.8	2.3	96.2	63.8	152.1	24.7
	SANTA CRUZ	43.1	2.0	84.6	60.1	122.6	23.8
	YAVAPAI	32.4	1.0	63.9	40.5	103.5	16.2
YUMA	48.6	1.6	100.1	61.2	168.4	23.5	
LA PAZ	44.1	5.2	83.8	48.0	144.9	21.6	
1998	TOTAL STATE	45.8	2.0	91.7	58.6	142.1	22.7
	APACHE	30.2	.5	62.6	36.8	105.7	13.7
	COCHISE	36.2	1.9	69.8	41.0	115.5	16.9
	COCONINO	28.0	.9	51.6	31.2	77.6	12.8
	GILA	45.4	1.7	88.4	61.9	130.5	24.8
	GRAHAM	36.3	.7	73.1	50.2	111.1	19.4
	GREENLEE	43.3	2.5	85.0	79.7	94.0	31.9
	MARICOPA	46.9	1.8	95.5	60.7	148.0	23.0
	MOHAVE	40.1	1.3	82.3	47.6	139.1	18.1
	NAVAJO	41.9	1.7	85.8	54.3	138.0	20.9
	PIMA	43.1	2.0	82.9	54.8	123.8	22.0
	PINAL	49.4	3.1	99.7	64.4	159.9	25.6
	SANTA CRUZ	48.3	1.9	96.6	69.2	136.9	26.4
	YAVAPAI	37.0	1.4	72.1	47.6	111.7	19.2
YUMA	46.6	1.7	94.6	58.6	156.6	22.9	
LA PAZ	39.2	1.7	38.3	24.3	52.4	13.0	
1999	TOTAL STATE	42.7	1.8	85.7	51.5	137.6	19.9
	APACHE	23.9	.8	49.5	25.4	88.3	9.6
	COCHISE	35.6	1.3	69.2	39.2	115.5	15.8
	COCONINO	30.2	1.4	55.5	36.7	78.9	15.1
	GILA	41.4	4.9	77.5	49.8	121.0	22.1
	GRAHAM	29.3	1.2	58.6	35.0	94.8	13.7
	GREENLEE	34.9	2.4	68.3	39.2	116.1	16.3
	MARICOPA	44.6	1.9	91.2	55.4	146.5	21.0
	MOHAVE	40.1	1.7	81.1	44.8	139.4	17.4
	NAVAJO	40.4	2.3	82.4	45.6	141.7	17.9
	PIMA	38.8	1.5	75.0	44.3	118.3	17.6
	PINAL	44.9	2.4	91.4	57.6	145.9	22.3
	SANTA CRUZ	41.7	0.0	87.2	48.2	145.2	17.1
	YAVAPAI	33.7	.4	65.9	35.0	114.8	13.8
YUMA	46.3	1.0	91.8	53.7	151.7	20.9	
LA PAZ	29.2	3.6	54.2	42.6	72.7	18.6	

* The data for 1997-1999 were revised in May 2001.