



TEENAGE PREGNANCY

Arizona, 1992-2002



Public Health Services

**Bureau of Public Health Statistics
Health Status and Vital Statistics Section**

Teenage pregnancy, 1992-2002

SOURCE: <http://www.azdhs.gov/plan/report/tp/teen02/index.htm>

Introduction/Key Findings/Figures

Tables:

1 - Pregnancies and pregnancy outcomes by age group and year, females 19 or less years old, Arizona, 1992-2002

2 - Pregnancy rates by pregnancy outcome, age group and year, females 19 or less years old, Arizona, 1992-2002

3 - Live births to females 19 or less years old by age group ethnic group and year, Arizona, 1992-2002

4 - Abortions to females 19 or less years old by age group, ethnic group and year, Arizona, 1992-2002

5 - Number of pregnancies by pregnancy outcome, ethnic group and year among females aged 17 and younger with rates, Arizona, 1992-2002

6 - Number of pregnancies by pregnancy outcome, ethnic group and year among females 15-17 years old with rates, Arizona, 1992-2002

7 - Number of pregnancies by pregnancy outcome, ethnic group and year among females 18-19 years old with rates, Arizona, 1992-2002

8 Number of pregnancies by pregnancy outcome, ethnic group and year among females 19 or less years old with rates, Arizona, 1992-2002

9 Trends in pregnancy rates by county of residence among females 10-17 and 18-19 years old, Arizona, 1992-2002

10A Pregnancies and pregnancy rates, females 19 or less years old by county of residence, Arizona, 2002

10B Births and birth rates, females 19 or less years old by county of residence, Arizona, 2002

11 Pregnancy rates and number of live births, fetal deaths and abortions to teens by individual age, Arizona, 2002

12 Births to females 19 or less years old by age and county of residence, Arizona, 2002

13 Abortions to females 19 or less years old by age and county of residence, Arizona, 2002

- 14 Sources of payment for labor and delivery, females 19 or less years old by county of residence, Arizona, 2002
- 15 Sources of payment for labor and delivery, females 19 or less years old by age group, Arizona, 2002
- 16 Teenage births by number of previous pregnancies by age group, Arizona, 2002
- 17 Teenage births by marital status and age group, Arizona, 2002
- 18 Teenage births by mother's education and age group, Arizona, 2002
- 19 Teenage births by trimester of entry into prenatal care and age group, Arizona, 2002
- 20 Teenage births by number of prenatal visits and age group, Arizona, 2002
- 21 Tobacco and/or alcohol use during pregnancy among females 19 or less years old by age group, Arizona, 2002
- 22 Risk for low-birthweight (LBW) births by selected characteristics of females 19 or less years old, Arizona, 2002
- 23 Live births to females 19 or less years of age as a percentage of total live births by area, ethnic group and year, Arizona. 1992-2002
- 24 Birth rates by age group for females 19 or less years old, Arizona and United States, 1992-2002
- 25 Repeat pregnancies among teenage mothers giving birth by age and year, Arizona, 1992-2002
- 26 Cumulative number of mothers who were 19 or less years old in Arizona in 2002
- 27 Population of females 19 or less years old, number of pregnancies and pregnancy rates by age group and race/ethnicity, Arizona, 2002
- 28 Population of females 19 or less years old by county of residence, Arizona 2002

Prepared and made Web-ready by:
Christopher K. Mrela, Ph.D., Assistant Registrar of Vital Statistics,
Trentham Coe, Senior Research Data Analyst,
Beverlee Hall, Health Planning Coordinator

PURPOSE

This report is the 2002 update of information about pregnancies among females under age 20. The data for 2002 are placed in a temporal context by comparison with the data for the preceding years.

METHODS AND SOURCES

In this report, pregnancies are measured as the sum of three components: live births, fetal deaths (or stillbirths) and reported abortions to Arizona resident women, unless otherwise specified. It does not include spontaneous fetal losses that occur at less than 20 weeks of gestation. Induced terminations of pregnancy do not include those performed out-of-state to Arizona residents, since they are not reported. Pregnancy statistics for Arizona are not available on a sub-county level.

Teens or teenagers are defined as 10-14 year old preadolescents and adolescents 15-19 years of age. Where possible, the data presented distinguish 18-19 year old teenagers from those aged 15-17 and girls less than 15 years of age.

The primary source documents for the data are the certificates of live births, certificates of fetal deaths and reports of induced terminations of pregnancy filed with the Arizona Department of Health Services.

Population denominators for Arizona's resident females, used to calculate rates, are projections from the Population Statistics Unit in the Arizona Department of Economic Security (data for 1992-1999) or census enumerations from the U.S. Census Bureau (data for 1980, 1990 and 2000).

In order to obtain the population denominators for 2002, the 2000 percentages of population breakdowns (or census shares) by age group and gender were applied to total state and total county population estimates released by the Department of Economic Security on 12/6/2002.

DATA ORGANIZATION

Tables 1-9 present annual numbers and rates of pregnancy, fertility and abortion by year from 1992 to 2002, age group and ethnicity for Arizona adolescents. Temporal trends and changes may be assessed from these data. Table 11 provides pregnancy rates by single year of age among females aged 19 and younger. Tables 9-10 and 12-14 provide data by county of residence. Live births to teenage mothers are also reported in Tables 15-22 by marital status, education, previous pregnancies, trimester of entry into prenatal care, source of payment for labor and delivery and tobacco and alcohol use during pregnancy. Proportional contribution of teen births to all births is shown in Table 23 by area of residence and ethnic group in Arizona from 1992 to 2002. Table 24 compares birth rates in Arizona and United States.

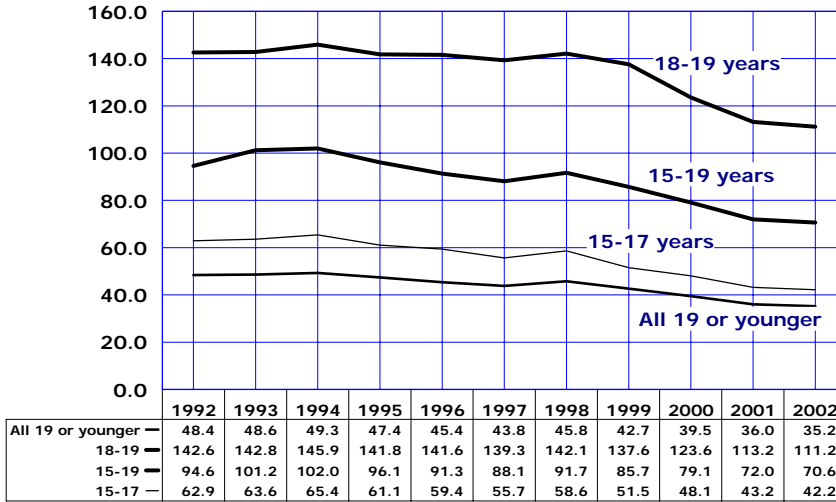
The annual numbers of repeat pregnancies among teenage mothers are shown by age and year from 1992 to 2002 in Table 25. The estimated number of mothers who were under the age of 20 in Arizona in 2002 is given in Table 26. The 2002 population denominators for Arizona resident females by age group and county of residence, as well as by age group and ethnicity are presented in Table 27 and Table 28.

KEY FINDINGS

The following section presents some illustrative findings contained in the figures and tables of the report. It is not intended to be an exhaustive analysis of the tabulated data.

KEY FINDINGS

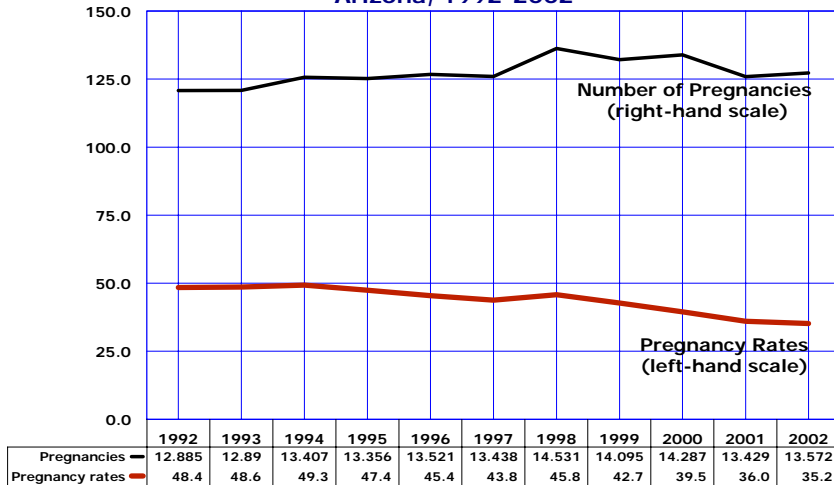
Figure 1
Pregnancy Rates by Age Group and Year Among Females 19 and Younger, Arizona, 1992-2002



Note: All rates are per 1,000 females in specified age group.

The pregnancy rate for Arizona teenagers 15-19 years old in 2002 was 70.6 pregnancies per 1,000 females (**Figure 1**), 1.9 percent lower than in 2001 and 30.8 percent lower than in 1994 when it reached the decade's peak of 102.0/1,000. The pregnancy rate for younger teenagers 15-17 years also reached a record low in 2002, dropping to 42.2/1,000, a 35.5 percent lower rate than in 1994. Similarly, the pregnancy rate for older teenagers declined in 2002 to 111.2/1,000, down 1.8 percent from 2001, and 23.8 percent from a rate of 145.9/1,000 in 1994 (**Figure 1**).

Figure 2
Trends in the Number of Pregnancies and Pregnancy Rates Among Females 19 Years and Younger, Arizona, 1992-2002



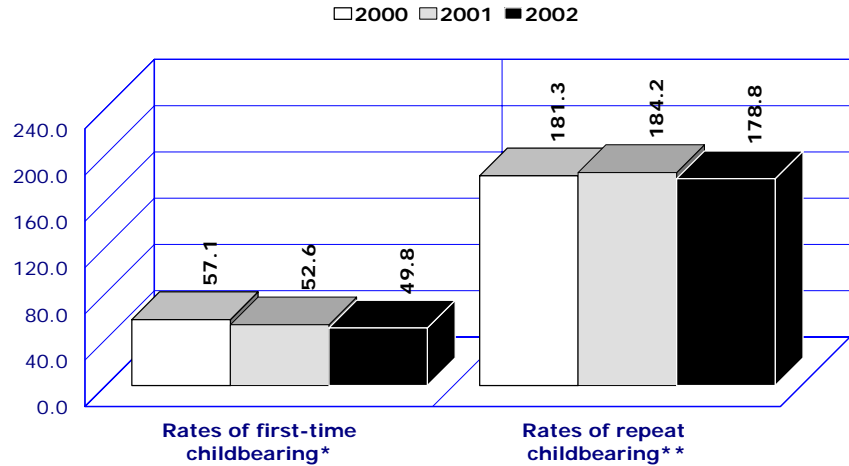
Pregnancy rate=The number of pregnancies per 1,000 females in specified age group

The pregnancy rate measures the proportion of teenagers becoming pregnant in a given year; the relative "risk for pregnancy" in a population "at risk". The number of pregnancies is, however, also determined by the size of the population "at risk": by the number of teenage females in the population. While the teen pregnancy rate has fallen in Arizona, the drop in the rate has not been enough to offset the growth in the female teenage population. **Compared to 1992, there were no fewer teen pregnancies in 2002 (12,885 and 13,572 respectively) (Figure 2), but fewer pregnancies per 1,000 teenage females.**

KEY FINDINGS

Figure 3
Rates of First and Repeat Births to Females
Aged 15-19 Years, Arizona, 2000, 2001 and 2002

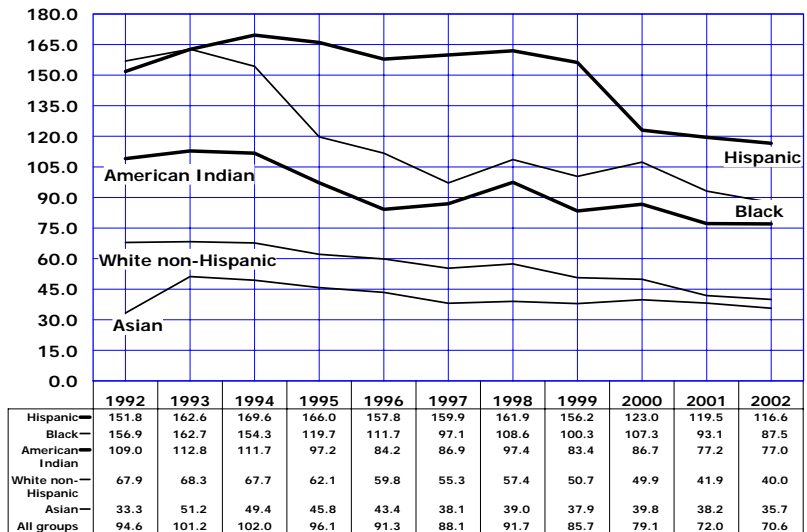
The declines from 2000 to 2002 in teenage birth rates have reflected reductions both in the first and repeat birth rates (Figure 3). The first birth rate for childless teenagers has dropped 12.8 percent since 2000. After increasing 1.6 percent between 2000 and 2001, the repeat birth rate for teenagers who had already had a child declined to 178.8 pregnancies per 1,000 females aged 15-19 years in 2002 (Figure 3). To put it another way, 18 percent of teenagers who already had one child gave birth again in 2002.



* Number of first births per 1,000 females 15-19 years old who have not had a birth.
 ** Number of repeat births per 1,000 females 15-19 years old who have had a birth previously.

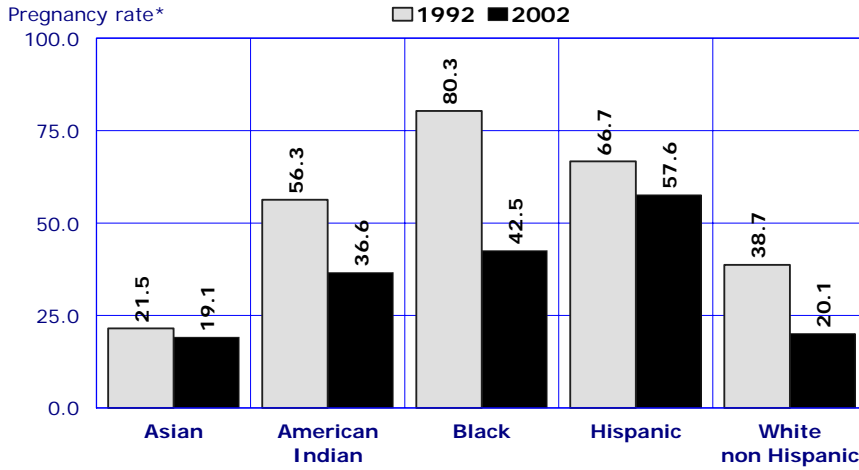
Figure 4
Trends in Pregnancy Rates by Race/Ethnicity Among
Females 15-19 Years Old, Arizona, 1992-2002

The pregnancy rates of Hispanic, Black, and American Indian teenagers exceeded the corresponding rates of White non-Hispanic and Asian females in every age group in 2002. Hispanic teenage females continued to have the highest age-specific pregnancy rates among all ethnic groups, followed by Blacks, American Indians, White non-Hispanics and Asians. Among females 15-19 years old, the Hispanic to White non-Hispanic differential in pregnancy rates was 2.9 times (116.6 vs. 40.0, Figure 4) in 2002.



KEY FINDINGS

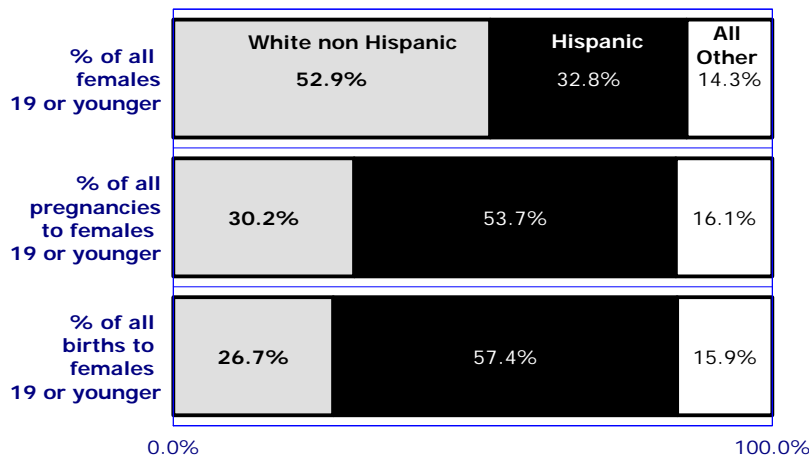
Figure 5
Comparison of Pregnancy Rates* by Ethnic Group Among
Females Aged 19 and Younger in Arizona in
1992 and 2002**



Between 1992 and 2002, pregnancy rates declined for all ethnic populations (**Figure 5**), with the steepest decline of 48.1 percent recorded for White non-Hispanic teens, followed by Black (47.1 percent) and American Indian teens (35 percent). The declines in pregnancy rates for Hispanic and Asian females aged 19 and younger were not quite as substantial (13.8 and 11.2 percent, respectively).

* Number of pregnancies per 1,000 females 10-19 years old in specified group.
 **These are the average annual rates for 1988-1992. The 1990 census enumerations by race/ethnicity were used as the denominators.

Figure 6
Proportional Contribution by Race/Ethnicity to
Pregnancies and Live Births Among
Females 19 or Younger, Arizona, 2002

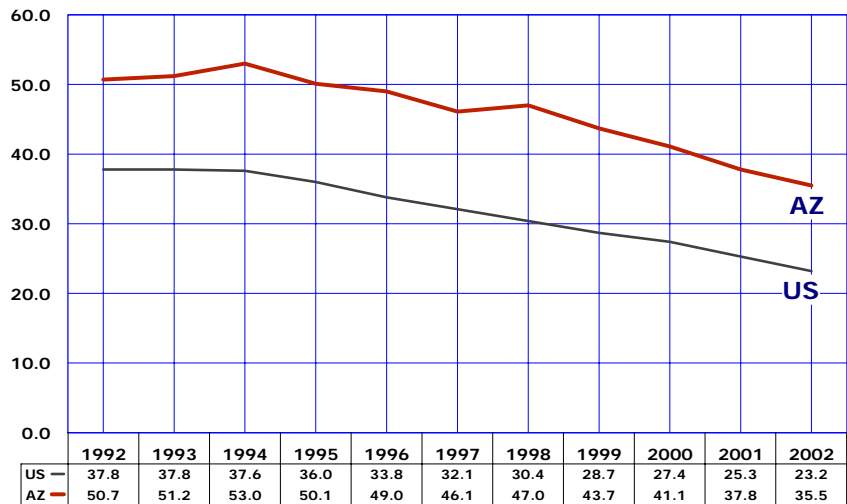


Hispanics, who accounted for 32.8 percent of all females 19 or younger in Arizona in 2002, made a significantly higher proportional contribution to teen pregnancies (53.7 percent) and live births (57.4 percent). In contrast, White non-Hispanic females who accounted for 52.9 percent of all teens in Arizona had a much lower proportional representation among teen pregnancies (30.2 percent) and live births (26.7 percent, **Figure 6**).

KEY FINDINGS

Figure 7
Birth Rates* Among Females 15-17 Years Old,
Arizona and United States, 1992-2002

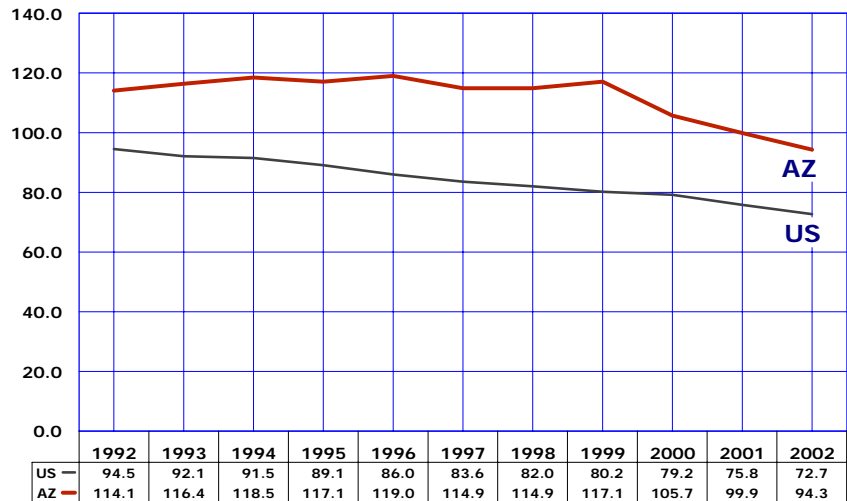
Between 1992 and 2002, the birth rates of Arizona younger (15-17 years) and older (18-19 years) adolescents have been consistently higher than the national rates (Figure 7, Figure 8). The 2002 Arizona birth rate of 35.5/1,000 was 53 percent greater than the birth rate of 23.2/1,000 for all U.S. teenagers aged 15-17 years (Table 24).



* Number of births per 1,000 females 15-17 years old.

Figure 8
Birth Rates* Among Females 18-19 Years Old,
Arizona and United States, 1992-2002

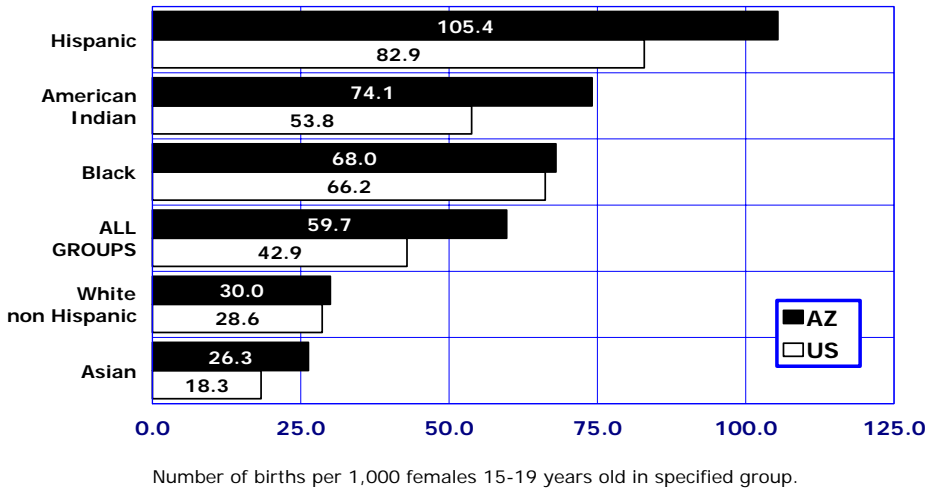
The 2002 Arizona birth rate of 94.3/1,000 was 30 percent greater than the birth rate of 72.7/1,000 for all U.S. teenagers aged 18-19 years (Figure 8, Table 24).



* Number of births per 1,000 females 18-19 years old.

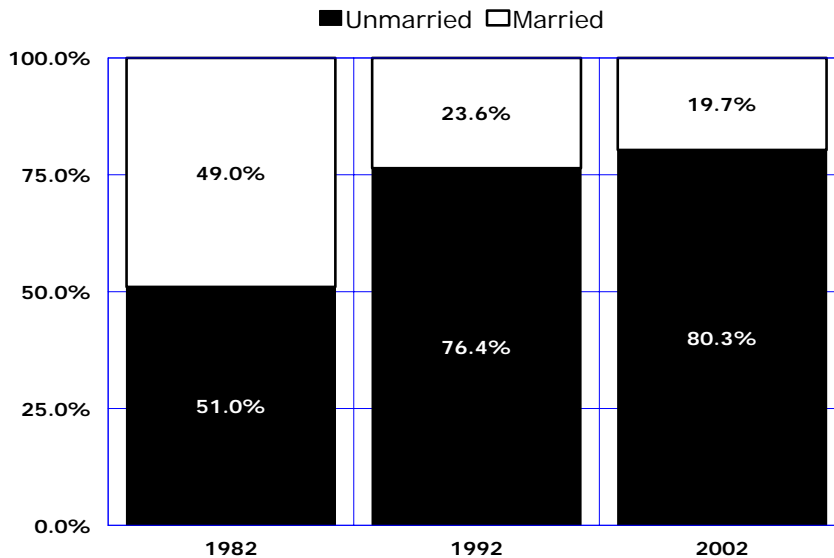
KEY FINDINGS

Figure 9
Birth Rates by Race/Ethnic Group Among Females 15-19
Years Old, Arizona and United States, 2002



Among teens aged 15-19 in 2002, Arizona birth rates were greater in every race/ethnic group than among their respective national peers (Figure 9).

Figure 10
Births to Mothers 15-19 Years Old by Marital Status,
Arizona, 1982, 1992 and 2002



Unwed mothers have accounted for an increasing annual proportion of births throughout the 1980s and 1990s. Two decades ago, the proportion of nonmarital births among teenagers aged 15-19 years was still around 50 percent (Figure 10). In 2002, nonmarital births accounted for eight out of ten births to mothers 15-19 years old.

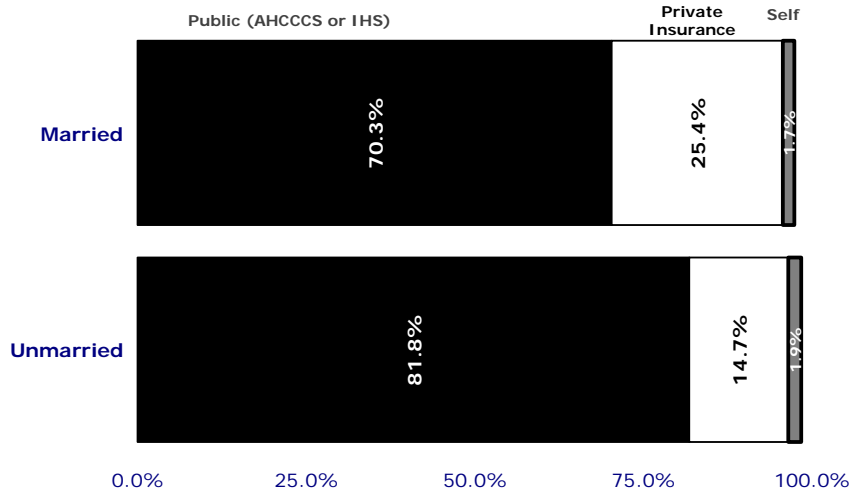
KEY FINDINGS

The Arizona Health Care Cost Containment System (AHCCCS) paid for 45.4 percent of the total deliveries in 2002, but 77.6 percent of the deliveries to mothers 19 or younger (**Table 15**).

Among AHCCCS mothers, 20.9 percent were teenagers under the age 20 compared to 4.8 percent of women giving birth in 2002 who had private insurance coverage.

Married mothers 15-19 years old are less likely than unmarried to utilize public sources of payment for birth (70.3 vs. 81.8 percent, **Figure 11**), and more likely to have private health insurance coverage (25.4 vs. 14.7 percent, **Figure 11**).

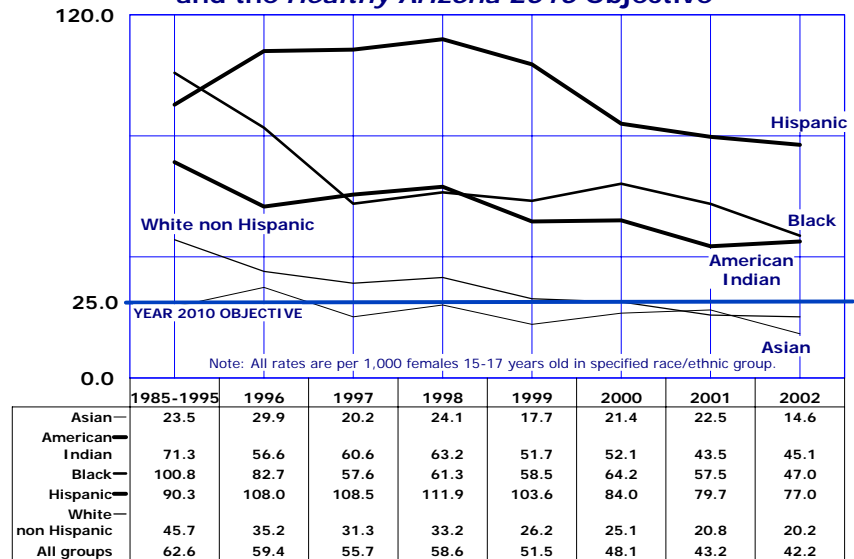
Figure 11
Sources of Payment for Labor and Delivery Among Mothers 15-19 Years Old, Arizona, 2002



Notes: "Public" consists of Arizona State Health Care Cost Containment System (AHCCCS) which is the State's Medicaid program and Indian Health Service (IHS).
"Unknown" sources of payment (not shown) equate to 2.6% of Married and 1.5% of Unmarried.

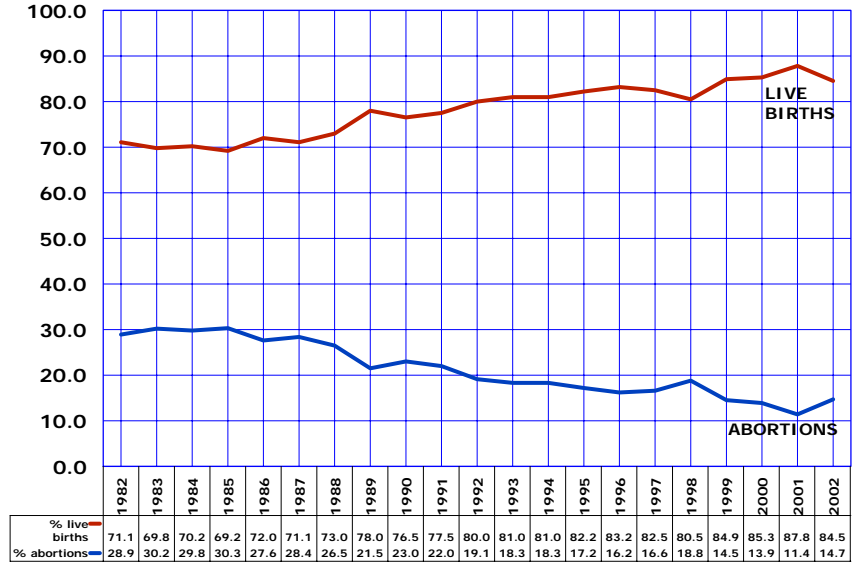
In 2002, the pregnancy rate of 42.2 per 1,000 adolescent girls 15-17 years old in Arizona was 68.8 percent greater than the *Healthy Arizona 2010* objective of 25.0/1,000 (**Figure 12**). The 2002 pregnancy rate among Asian females ages 15-17 years was 41.6 percent lower, and among White non-Hispanic females 19.2 percent lower than the objective. In contrast, the 2002 pregnancy rate among Hispanic females 15-17 years old exceeded the target rate by 208 percent (or 3.1 times).

Figure 12
Pregnancy Rates by Race/Ethnicity Among Females 15-17 Years Old: 1985-1995, 1996-2002 and the Healthy Arizona 2010 Objective



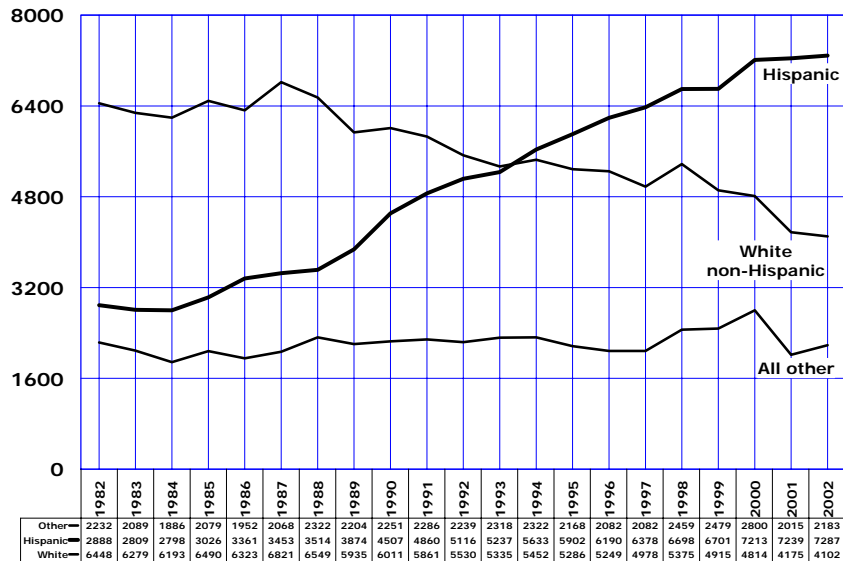
KEY FINDINGS

Figure 13
Percent Pregnancies Ending in Abortions or Live Births
by Year Among Females 19 Years and Younger,
Arizona, 1982-2002



The proportion of teen pregnancies ending in abortions declined steadily from a high of 30.3 percent in 1985 (Figure 13). The percent of teen pregnancies ending in live births increased during that time from 69.2 percent in 1985 to about 85-87 percent in 1999-2002. However, it is important to note that compared to live births, abortions are more likely to be underreported. The number of abortions actually performed is probably greater than the number of abortions reported to the health department. The decline in the number of abortions may reflect multiple factors, including changes in contraceptive practices such as the use of "Morning After Pill" or the passage of abortion laws that affect adolescents (e.g., parental consent or judicial authorization laws).

Figure 14
Number of Pregnancies by Race/Ethnicity and Year
Among Females 19 Years and Younger,
Arizona, 1982-2002



The number of pregnancies among Hispanic teens was 4,399 greater in 2002 than it was in 1982, while the combined number of pregnancies among White non-Hispanic, Black, American Indian and Asian females was 2,395 lower than in 1982. In 2002, Hispanics accounted for 53.7 percent of all pregnancies to females aged 19 years and younger, compared to 25 percent in 1982 (Figure 14). In contrast, White non-Hispanics who accounted for the absolute majority (55.7 percent) of all teen pregnancies in 1982, accounted for less than one-third (30.2 percent) of total teen pregnancies in 2002.

**TABLE 1
PREGNANCIES AND PREGNANCY OUTCOMES BY AGE GROUP AND YEAR,
FEMALES 19 OR YOUNGER, ARIZONA, 1992-2002**

Pregnancy Outcome by Year	Total, Females 19 Years or Younger	Under 15 Years	15-19 Years Old		
			Total	15-17 Years	18-19 Years
ALL PREGNANCIES					
1992	12,885	274	12,611	4,762	7,849
1993	12,890	256	12,634	4,803	7,831
1994	13,407	333	13,074	5,092	7,982
1995	13,356	314	13,042	5,092	7,950
1996	13,521	293	13,228	5,262	7,966
1997	13,438	278	13,160	5,096	8,064
1998	14,531	316	14,216	5,482	8,734
1999	14,095	303	13,792	4,993	8,799
2000	14,287	278	14,009	5,016	8,993
2001	13,429	253	13,170	4,661	8,515
2002	13,572	255	13,317	4,696	8,621
LIVE BIRTHS					
1992	10,307	188	10,119	3,838	6,281
1993	10,438	187	10,251	3,870	6,381
1994	10,858	246	10,612	4,132	6,480
1995	10,973	229	10,744	4,178	6,566
1996	11,247	216	11,031	4,340	6,691
1997	11,085	214	10,871	4,219	6,652
1998	11,695	234	11,461	4,397	7,064
1999	11,963	238	11,725	4,236	7,489
2000	12,189	216	11,973	4,284	7,689
2001	11,790	198	11,592	4,080	7,512
2002	11,474	206	11,268	3,952	7,316
ABORTIONS					
1992	2,467	84	2,383	885	1,498
1993	2,357	68	2,289	892	1,397
1994	2,458	82	2,376	916	1,460
1995	2,294	82	2,212	880	1,332
1996	2,186	72	2,114	892	1,222
1997	2,233	56	2,177	826	1,351
1998	2,735	78	2,657	1,046	1,611
1999	2,046	60	1,986	727	1,259
2000	1,988	57	1,931	684	1,247
2001	1,528	46	1,482	540	942
2002	1,995	44	1,951	705	1,246
FETAL LOSSES					
1992	111	2	109	39	70
1993	95	1	94	41	53
1994	91	5	86	44	42
1995	89	3	86	34	52
1996	88	5	83	30	53
1997	120	8	112	51	61
1998	102	4	98	39	59
1999	85	5	80	29	51
2000	110	5	105	48	57
2001	111	9	102	41	61
2002	103	5	98	39	59

TABLE 2
PREGNANCY RATES¹ BY PREGNANCY OUTCOME, AGE GROUP AND YEAR,
FEMALES 19 OR LESS YEARS OLD, ARIZONA, 1992-2002

Pregnancy Outcome by Year	Total, Females 19 Years or Younger	Under 15 Years	15-19 Years Old		
			Total	15-17 Years	18-19 Years
ALL PREGNANCIES					
1992	48.4	2.1	94.6	62.9	142.6
1993	48.6	1.8	101.2	63.6	142.8
1994	49.3	2.3	102.0	65.4	145.9
1995	47.4	2.2	96.1	61.1	141.8
1996	45.4	1.9	91.3	59.4	141.6
1997	43.8	1.8	88.1	55.7	139.3
1998	45.8	2.0	91.7	58.6	142.1
1999	42.7	1.8	85.7	51.5	137.6
2000	39.5	1.5	79.1	48.1	123.6
2001	36.0	1.3	72.0	43.2	112.2
2002	35.2	1.3	70.6	42.2	111.2
LIVE BIRTHS					
1992	38.7	1.4	75.9	50.7	114.1
1993	39.4	1.3	82.1	51.2	116.4
1994	39.9	1.7	82.8	53.0	118.5
1995	38.9	1.6	79.1	50.1	117.1
1996	37.8	1.4	76.1	49.0	119.0
1997	36.1	1.4	72.8	46.1	114.9
1998	36.9	1.4	73.9	47.0	114.9
1999	36.2	1.4	72.9	43.7	117.1
2000	33.7	1.2	67.6	41.1	105.7
2001	31.6	1.0	63.3	37.8	99.9
2002	29.8	1.0	59.7	35.5	94.3
ABORTIONS					
1992	9.3	0.6	17.9	11.7	27.2
1993	8.9	0.5	18.3	11.8	25.5
1994	9.0	0.6	18.5	11.8	26.7
1995	8.1	0.6	16.3	10.6	23.8
1996	7.4	0.5	14.6	10.1	21.7
1997	7.3	0.4	14.6	9.0	23.3
1998	8.6	0.5	17.1	11.2	26.2
1999	6.1	0.3	12.3	7.5	19.7
2000	5.5	0.3	10.9	6.6	17.1
2001	4.1	0.2	8.1	5.0	12.5
2002	5.2	0.2	10.3	6.3	16.1
FETAL LOSSES					
1992	0.4	0.0	0.8	0.5	1.3
1993	0.4	0.0	0.8	0.5	1.0
1994	0.3	0.0	0.7	0.6	0.8
1995	0.3	0.0	0.6	0.4	0.9
1996	0.3	0.0	0.6	0.3	0.9
1997	0.4	0.0	0.7	0.6	1.0
1998	0.3	0.0	0.6	0.4	1.0
1999	0.3	0.0	0.5	0.3	0.8
2000	0.3	0.0	0.6	0.5	0.8
2001	0.3	0.0	0.6	0.4	0.8
2002	0.3	0.0	0.5	0.4	0.8

¹ The number of pregnancies (live births + abortions + fetal deaths) per 1,000 females in specified age group.

0.0: Quantity more than zero but less than 0.05.

**TABLE 3
LIVE BIRTHS TO FEMALES 19 OR LESS YEARS OLD BY AGE GROUP,
ETHNIC GROUP AND YEAR, ARIZONA, 1992 - 2002**

Ethnic Group and Year	Total, Females 19 Years or Younger	Under 15 Years	15-19 Years Old		
			Total	15-17 Years	18-19 Years
WHITE NON HISPANIC					
1992	4,060	43	4,017	1,351	2,666
1993	4,024	51	3,973	1,343	2,630
1994	4,023	61	3,962	1,392	2,570
1995	4,042	51	3,991	1,338	2,653
1996	4,033	40	3,993	1,368	2,625
1997	3,733	27	3,706	1,239	2,467
1998	3,843	38	3,805	1,261	2,544
1999	3,869	31	3,838	1,115	2,723
2000	3,759	38	3,721	1,040	2,681
2001	3,396	34	3,362	926	2,436
2002	3,064	23	3,041	824	2,217
HISPANIC					
1992	4,543	103	4,440	1,840	2,600
1993	4,688	102	4,586	1,837	2,749
1994	5,075	138	4,937	2,066	2,871
1995	5,351	133	5,218	2,241	2,977
1996	5,628	132	5,496	2,308	3,188
1997	5,736	146	5,590	2,329	3,261
1998	5,951	142	5,809	2,419	3,390
1999	6,161	149	6,012	2,415	3,597
2000	6,548	144	6,404	2,567	3,837
2001	6,648	132	6,516	2,552	3,964
2002	6,585	147	6,438	2,507	3,931
BLACK					
1992	570	12	558	237	321
1993	581	12	569	241	328
1994	576	14	562	223	339
1995	491	17	474	185	289
1996	498	10	488	220	268
1997	519	13	506	207	299
1998	586	16	570	223	347
1999	603	14	589	222	367
2000	572	12	560	198	362
2001	545	13	532	193	339
2002	468	12	456	152	304
AMERICAN INDIAN					
1992	1,080	30	1,050	394	656
1993	1,060	20	1,040	419	621
1994	1,095	32	1,063	421	642
1995	991	25	966	387	579
1996	996	28	968	401	567
1997	971	25	946	407	539
1998	1,122	31	1,091	429	662
1999	1,050	38	1,012	389	623
2000	1,089	20	1,069	405	664
2001	1,013	17	996	348	648
2002	1,039	18	1,021	374	647

Note: See Table 1 for the number of births for all ethnic groups.

TABLE 4
ABORTIONS TO FEMALES 19 OR LESS YEARS OLD BY AGE GROUP,
ETHNIC GROUP AND YEAR, ARIZONA, 1992 - 2002

Ethnic Group and Year	Total, Females 19 Years or Younger	Under 15 Years	15-19 Years Old		
			Total	15-17 Years	18-19 Years
WHITE NON HISPANIC					
1992	1,470	37	1,433	523	910
1993	1,311	29	1,282	504	778
1994	1,429	41	1,388	552	836
1995	1,244	33	1,211	481	730
1996	1,148	27	1,121	478	643
1997	1,179	29	1,150	433	717
1998	1,480	38	1,442	563	879
1999	981	26	955	369	586
2000	1,020	25	995	342	653
2001	746	16	730	262	458
2002	1,010	20	990	367	623
HISPANIC					
1992	573	39	534	202	332
1993	549	21	528	198	330
1994	558	21	537	200	337
1995	551	30	521	204	317
1996	562	23	539	218	321
1997	642	21	621	240	381
1998	747	29	718	292	426
1999	540	16	524	183	341
2000	610	22	588	228	360
2001	534	22	512	199	313
2002	650	15	635	235	400
BLACK					
1992	160	4	156	60	96
1993	147	4	143	49	94
1994	137	7	130	42	88
1995	99	4	95	34	61
1996	105	6	99	44	55
1997	107	0	107	40	67
1998	147	4	143	51	92
1999	96	7	89	27	62
2000	115	5	110	42	68
2001	71	3	68	28	40
2002	118	4	114	30	84
AMERICAN INDIAN					
1992	58	2	56	19	37
1993	61	3	58	18	40
1994	55	2	53	15	38
1995	66	3	63	24	39
1996	54	4	40	18	32
1997	58	2	56	17	39
1998	53	0	53	22	31
1999	56	3	53	17	36
2000	43	2	41	13	28
2001	29	3	26	7	19
2002	40	3	37	12	25

Note: See Table 1 for the number of abortions for all ethnic groups.

**TABLE 5
NUMBER OF PREGNANCIES¹ BY PREGNANCY OUTCOME, ETHNIC GROUP AND YEAR
AMONG FEMALES AGED 17 AND YOUNGER WITH RATES², ARIZONA, 1992-2002**

Ethnicity/Pregnancy Outcome	1992	1993	1994	1995	1996	1997	1998	1999	2000	2001	2002	2002 Rates
WHITE,³ total:	1,954	1,927	2,046	1,903	1,937	1,760	1,918	1,566	1,462	1,250	1,245	7.7
Births	1,394	1,394	1,453	1,389	1,408	1,266	1,299	1,146	1,078	960	847	5.3
Abortions	560	533	593	514	505	462	601	395	367	278	387	2.4
HISPANIC, total:	2,184	2,185	2,425	2,608	2,681	2,736	2,882	2,763	2,991	2,930	2,926	28.9
Births	1,943	1,939	2,204	2,374	2,440	2,475	2,561	2,564	2,711	2,684	2,654	26.2
Abortions	241	219	221	234	241	261	321	199	250	221	250	2.5
BLACK, total:	313	306	286	240	289	242	263	275	227	240	207	18.0
Births	249	253	237	202	230	220	239	236	210	206	164	14.2
Abortions	64	53	49	38	50	40	55	34	47	31	34	3.0
AMERICAN INDIAN, total:	446	460	470	439	453	489	530	450	476	384	409	16.8
Births	424	439	453	412	429	432	460	427	425	365	392	16.1
Abortions	22	21	17	27	22	19	22	20	15	10	15	0.6
ALL ETHNIC GROUPS,⁴ total:	5,036	5,059	5,425	5,406	5,555	5,374	5,798	5,296	5,294	4,914	4,951	16.1
Births	4,026	4,057	4,378	4,407	4,556	4,433	4,631	4,474	4,500	4,278	4,158	13.5
Abortions	969	960	998	962	964	882	1,124	787	741	586	749	2.4
PREGNANCY RATE, total:	24.1	23.5	24.2	23.6	23.1	22.0	22.7	19.9	18.4	16.5	16.1	
Fertility rate⁵	19.3	18.8	19.7	19.2	18.9	18.2	18.1	16.8	15.6	14.3	13.5	
Abortion rate	4.6	4.5	4.5	4.2	4.0	3.5	4.4	3.0	2.6	2.0	2.4	

¹ Fetal deaths are included in the total counts of pregnancies.

² All rates per 1,000 females 10-17 years old.

³ Not of Hispanic origin.

⁴ Includes other and unspecified ethnicity.

⁵ Number of births per 1,000 females 10-17 years old.

TABLE 6
NUMBER OF PREGNANCIES¹ BY PREGNANCY OUTCOME, ETHNIC GROUP AND YEAR
AMONG FEMALES 15-17 YEARS OLD WITH RATES², ARIZONA, 1992-2002

Ethnicity/Pregnancy Outcome	1992	1993	1994	1995	1996	1997	1998	1999	2000	2001	2002	2002 Rates
WHITE,³ total:	1,874	1,847	1,944	1,819	1,867	1,699	1,841	1,505	1,397	1,197	1,202	20.2
Births	1,351	1,343	1,392	1,338	1,368	1,239	1,261	1,115	1,040	926	824	13.9
Abortions	523	504	552	481	478	433	563	369	342	262	367	6.2
HISPANIC, total:	2,042	2,035	2,266	2,445	2,526	2,569	2,711	2,598	2,823	2,771	2,761	77.0
Births	1,840	1,837	2,066	2,241	2,308	2,329	2,419	2,415	2,567	2,552	2,507	69.9
Abortions	202	198	200	204	218	240	292	183	228	199	235	6.6
BLACK, total:	297	290	265	219	271	250	276	254	242	224	189	47.0
Births	237	241	223	185	220	207	223	222	198	193	152	37.8
Abortions	60	49	42	34	44	40	51	27	42	28	30	7.5
AMERICAN INDIAN, total:	413	437	436	411	421	439	464	408	421	363	388	45.1
Births	394	419	421	387	401	407	429	389	405	348	374	43.3
Abortions	19	18	15	24	18	17	22	17	13	7	12	1.4
ALL ETHNIC GROUPS,⁴ total:	4,762	4,803	5,092	5,092	5,262	5,096	5,482	4,993	5,016	4,661	4,696	42.2
Births	3,838	3,870	4,132	4,178	4,340	4,219	4,397	4,236	4,284	4,080	3,952	35.5
Abortions	885	892	916	880	892	826	1,046	727	684	540	705	6.3
PREGNANCY RATE, total:	62.9	63.6	65.4	61.1	59.4	55.7	58.6	51.5	48.1	43.2	42.2	
Fertility rate⁵	50.7	51.2	53.0	50.1	49.0	46.1	47.0	43.7	41.1	37.8	35.5	
Abortion rate	11.7	11.8	11.8	10.6	10.1	9.0	11.2	7.5	6.6	5.0	6.3	

¹ Fetal deaths are included in the total counts of pregnancies.

² All rates per 1,000 females 15-17 years old.

³ Not of Hispanic origin.

⁴ Includes other and unspecified ethnicity.

⁵ Number of births per 1,000 females 15-17 years old.

**TABLE 7
NUMBER OF PREGNANCIES¹ BY PREGNANCY OUTCOME, ETHNIC GROUP AND
YEAR AMONG FEMALES 18-19 YEARS OLD WITH RATES², ARIZONA, 1992-2002**

Ethnicity/Pregnancy Outcome	1992	1993	1994	1995	1996	1997	1998	1999	2000	2001	2002	2002 Rates
WHITE³ total:	3,576	3,408	3,406	3,383	3,312	3,218	3,457	3,349	3,352	2,925	2,857	67.9
Births	2,666	2,630	2,570	2,653	2,625	2,467	2,544	2,723	2,681	2,436	2,217	52.7
Abortions	910	778	836	730	643	717	879	586	653	468	623	14.8
HISPANIC, total:	2,932	3,079	3,208	3,234	3,509	3,642	3,816	3,938	4,222	4,309	4,361	172.8
Births	2,600	2,749	2,871	2,977	3,188	3,261	3,390	3,597	3,837	3,964	3,931	155.7
Abortions	332	330	337	317	321	381	426	341	360	313	400	15.9
BLACK, total:	417	422	427	350	328	368	442	434	433	382	398	148.0
Births	321	328	339	289	268	299	347	367	362	339	304	113.0
Abortions	96	94	88	61	55	67	92	62	68	40	84	31.2
AMERICAN INDIAN, total:	693	661	680	618	603	600	710	665	700	669	673	130.1
Births	656	621	642	579	567	539	662	623	664	648	647	125.1
Abortions	37	40	38	39	32	39	31	36	28	19	25	4.8
ALL ETHNIC GROUPS,⁴ total:	7,849	7,831	7,982	7,950	7,966	8,064	8,734	8,799	8,993	8,515	8,621	111.2
Births	6,281	6,381	6,480	6,566	6,691	6,652	7,064	7,489	7,689	7,512	7,316	94.3
Abortions	1,498	1,397	1,460	1,332	1,222	1,351	1,611	1,259	1,247	942	1,246	16.1
PREGNANCY RATE, total:	142.6	142.8	145.9	141.8	141.6	139.3	142.1	137.6	123.6	113.2	111.2	
Fertility rate⁵	114.1	116.4	118.5	117.1	119.0	114.9	114.9	117.1	105.7	99.9	94.3	
Abortion rate	27.2	25.5	26.7	23.8	21.7	23.3	26.2	19.7	17.1	12.5	16.1	

¹ Fetal deaths are included in the total count of pregnancies.

² All rates per 1,000 females 18-19 years old.

³ Not of Hispanic origin.

⁴ Includes other and unspecified ethnicity.

⁵ Number of births per 1,000 females 18-19 years old.

TABLE 8
NUMBER OF PREGNANCIES¹ BY PREGNANCY OUTCOME, ETHNIC GROUP AND YEAR
AMONG FEMALES 19 OR YOUNGER, WITH RATES², ARIZONA, 1992-2002

Ethnicity/Pregnancy Outcome	1992	1993	1994	1995	1996	1997	1998	1999	2000	2001	2002	2002 Rates
WHITE,³ total:	5,530	5,335	5,452	5,286	5,249	4,978	5,375	4,915	4,814	4,175	4,102	20.1
Births	4,060	4,024	4,023	4,042	4,033	3,733	3,843	3,869	3,759	3,396	3,064	15.1
Abortions	1,470	1,311	1,429	1,244	1,148	1,179	1,480	981	1,020	746	1,010	5.0
HISPANIC, total:	5,116	5,237	5,633	5,902	6,190	6,378	6,698	6,701	7,213	7,239	7,287	57.6
Births	4,543	4,688	5,075	5,351	5,628	5,736	5,951	6,161	6,548	6,648	6,585	52.1
Abortions	573	549	558	551	562	642	747	540	610	534	650	5.2
BLACK, total:	730	728	713	590	617	582	644	669	620	622	605	42.5
Births	570	581	576	491	498	519	586	603	572	545	468	32.9
Abortions	160	147	137	99	105	107	147	96	115	71	118	8.3
AMERICAN INDIAN, total:	1,138	1,121	1,150	1,057	1,056	1,117	1,301	1,155	1,216	1,053	1,082	36.6
Births	1,080	1,060	1,095	991	996	971	1,122	1,050	1,089	1,013	1,039	35.1
Abortions	58	61	55	66	54	58	53	56	43	29	40	1.4
ALL ETHNIC GROUPS,⁴ total:	12,885	12,890	13,407	13,356	13,521	13,438	14,532	14,095	14,287	13,429	13,572	35.2
Births	10,307	10,438	10,858	10,973	11,247	11,085	11,695	11,963	12,189	11,790	11,474	29.8
Abortions	2,476	2,357	2,458	2,294	2,186	2,233	2,735	2,046	1,988	1,528	1,995	5.2
PREGNANCY RATE, total:	48.4	48.6	49.3	47.4	45.4	43.8	45.8	42.7	39.5	36.0	35.2	
Fertility rate⁵	38.7	39.4	39.9	38.9	37.8	36.1	36.9	36.2	33.7	31.6	29.8	
Abortion rate	9.3	8.9	9.4	8.1	7.4	7.3	8.6	6.2	5.5	4.1	5.2	

¹ Fetal deaths are included in the total counts of pregnancies.

² All rates per 1,000 females 19 or less years old.

³ Not of Hispanic origin.

⁴ Includes other and unspecified ethnicity.

⁵ Number of births per 1,000 females 19 or less years old.

**TABLE 9
TRENDS IN PREGNANCY RATES* BY COUNTY OF RESIDENCE AMONG FEMALES 10-17 AND 18-19 YEARS OLD,
ARIZONA, 1992-2002**

		ARIZONA	APACHE	COCHISE	COCONINO	GILA	GRAHAM	GREENLEE	MARICOPA	MOHAVE	NAVAJO	PIMA	PINAL	SANTA CRUZ	YAVAPAI	YUMA	LA PAZ
19 YEARS OR YOUNGER	1992	48.4	37.4	40.6	29.3	55.1	31.1	27.5	52.4	43.2	43.9	42.3	59.8	48.8	37.4	50.4	40.7
	1993	48.6	39.0	44.8	43.3	50.3	37.3	41.1	50.4	48.3	43.4	46.4	58.2	48.5	35.3	55.0	37.4
	1994	49.3	37.2	39.7	38.9	48.6	34.3	35.4	51.7	46.2	41.0	49.2	58.4	46.7	35.1	54.5	44.2
	1995	47.4	31.7	42.9	39.6	40.5	28.9	51.8	48.9	45.2	42.1	45.5	50.8	44.6	37.0	54.0	45.2
	1996	45.4	29.6	37.5	39.7	42.4	40.1	53.6	47.1	44.2	37.0	44.3	47.9	42.3	34.9	50.1	29.8
	1997	43.8	30.4	39.8	31.7	45.0	41.3	46.1	44.6	42.6	37.4	43.1	46.8	43.1	32.4	48.6	44.1
	1998	45.8	30.2	36.2	28.0	45.4	36.3	43.3	46.9	40.1	41.9	43.1	49.4	48.3	37.0	46.6	39.2
	1999	42.7	23.9	35.6	30.2	41.4	29.3	34.9	44.6	40.1	40.4	38.8	44.9	41.7	33.7	46.3	29.2
	2000	39.5	29.2	38.7	28.6	41.1	28.8	26.7	40.7	33.5	34.8	39.6	47.7	39.3	33.0	42.0	32.6
	2001	36.0	21.6	34.3	30.3	43.2	33.8	18.3	37.2	31.4	26.7	36.0	43.7	33.0	26.3	36.7	36.8
2002	35.2	23.2	30.6	26.0	42.4	29.9	40.0	36.0	32.5	28.5	36.3	38.5	36.4	29.6	38.8	35.6	
18-19 YEARS OLD	1992	142.6	150.3	154.4	76.9	223.9	97.1	146.1	146.7	164.5	179.9	104.3	190.1	164.2	118.7	153.3	119.1
	1993	142.8	136.6	130.2	130.9	154.6	166.7	117.2	163.7	166.4	161.3	152.6	188.7	153.3	95.2	172.0	133.3
	1994	145.9	132.1	113.4	125.5	149.4	108.7	90.9	167.1	161.5	152.6	155.8	165.3	147.7	129.5	184.8	118.5
	1995	141.6	113.4	106.5	106.3	133.3	96.3	229.6	157.4	193.9	150.2	134.1	167.1	150.2	135.2	179.6	146.7
	1996	141.6	107.2	114.8	112.7	143.8	131.8	189.4	146.8	146.8	130.3	134.6	147.6	135.7	120.1	157.1	91.4
	1997	139.3	98.8	155.6	91.8	154.5	120.4	192.6	143.0	156.3	124.5	133.3	152.1	122.6	103.5	168.4	144.9
	1998	142.1	105.7	115.5	77.6	130.5	111.1	94.0	148.0	139.1	138.0	123.8	159.9	136.9	111.7	156.6	135.7
	1999	137.6	88.3	115.5	78.9	121.0	94.8	116.1	146.5	139.4	141.7	118.3	145.9	145.2	114.8	151.7	72.7
	2000	135.8	109.9	124.5	74.7	167.3	74.1	123.8	127.8	139.7	154.1	104.7	161.0	132.1	124.9	149.8	127.1
	2001	113.2	91.9	116.8	84.3	154.3	84.9	78.4	117.3	132.5	111.7	96.6	156.9	113.7	91.8	130.8	153.0
2002	111.1	100.7	104.4	68.9	151.5	78.4	161.9	114.2	131.5	121.5	96.7	130.2	137.7	115.9	133.4	127.0	
10-17 YEARS OLD	1992	24.1	15.7	16.5	19.2	23.6	13.8	13.3	26.8	18.6	18.3	20.9	30.6	16.0	19.1	25.0	24.6
	1993	23.5	18.2	23.4	21.0	26.4	17.6	23.7	24.4	21.7	19.2	22.1	28.9	22.2	13.4	27.8	14.6
	1994	24.2	17.7	21.0	16.8	24.6	16.9	22.6	25.7	20.4	18.4	24.9	33.6	23.1	15.6	25.4	25.3
	1995	23.6	13.9	20.3	20.6	19.5	13.8	15.2	24.5	15.5	19.2	23.7	26.6	21.1	15.8	26.6	22.8
	1996	23.0	12.7	19.7	18.9	20.1	16.9	26.8	24.0	22.1	16.9	21.8	27.2	21.7	15.8	26.8	15.5
	1997	22.0	15.7	19.2	14.1	30.4	22.5	16.5	22.4	18.5	18.3	20.4	24.7	23.8	16.2	23.5	21.6
	1998	22.7	13.7	16.9	12.8	24.8	19.4	31.9	23.0	18.1	20.9	22.0	25.6	26.4	19.2	22.9	13.0
	1999	19.9	9.6	15.8	15.1	22.1	13.7	16.3	21.0	17.4	17.9	17.6	22.3	17.1	13.8	20.9	18.6
	2000	18.4	15.0	19.1	14.6	17.6	13.9	8.8	18.9	12.0	13.7	19.1	23.8	21.8	13.3	17.5	15.2
	2001	16.5	9.2	15.5	13.9	22.5	17.0	7.2	17.2	10.9	11.7	16.9	19.8	17.8	12.3	15.3	15.2
2002	16.1	9.6	13.7	13.0	22.1	14.0	17.5	16.5	12.5	12.0	17.2	19.1	17.2	11.1	17.3	18.7	

* Number of pregnancies per 1,000 females in specified group.

**TABLE 10A
PREGNANCIES AND PREGNANCY RATES, FEMALES 19 OR YOUNGER
BY COUNTY OF RESIDENCE, ARIZONA, 2002**

County of residence	NUMBER OF PREGNANCIES:*				
	All 19 years or younger	10-14 years	15-19 years		
			Total	15-17 years	18-19 years
Apache	174	2	172	59	113
Cochise	279	3	276	99	177
Coconino	269	4	265	99	166
Gila	157	1	156	68	88
Graham	94	2	92	31	61
Greenlee	27	1	26	9	17
Maricopa	8,142	165	7,977	2,813	5,164
Mohave	328	6	322	99	223
Navajo	287	3	284	100	184
Pima	2,280	36	2,244	784	1,460
Pinal	494	13	481	190	291
Santa Cruz	133	2	131	51	80
Yavapai	324	7	317	93	224
Yuma	505	9	496	174	322
La Paz	43	1	42	18	24
TOTAL STATE**	13,572	255	13,317	4,696	8,621

County of residence	PREGNANCY RATES:***				
	All 19 years or younger	10-14 years	15-19 years		
			Total	15-17 years	18-19 years
Apache	23.2	.5	50.9	26.2	100.7
Cochise	30.6	.6	61.9	35.8	104.4
Coconino	26.0	.8	49.4	33.5	68.9
Gila	42.4	.5	92.0	61.0	151.5
Graham	29.9	1.3	56.1	36.0	78.4
Greenlee	40.0	2.9	78.8	40.0	161.9
Maricopa	36.0	1.4	72.5	43.4	114.2
Mohave	32.5	1.1	67.7	32.4	131.5
Navajo	28.5	.6	61.1	31.9	121.5
Pima	36.3	1.2	68.8	44.7	96.7
Pinal	38.5	1.9	79.6	49.9	130.2
Santa Cruz	36.4	1.0	77.7	46.2	137.7
Yavapai	29.6	1.2	59.5	27.4	115.9
Yuma	38.8	1.3	80.6	46.5	133.4
La Paz	35.6	1.6	71.8	45.5	127.0
TOTAL STATE	35.2	1.3	70.6	42.2	111.1

* The sum of live births, fetal deaths and abortions.

** Includes records with unknown county of residence.

*** The number of pregnancies per 1,000 females in specified group.

**TABLE 10B
BIRTHS AND BIRTH RATES, FEMALES 19 OR YOUNGER
BY COUNTY OF RESIDENCE, ARIZONA, 2002**

County of residence	NUMBER OF BIRTHS:				
	All 19 years or younger	10-14 years	15-19 years		
			Total	15-17 years	18-19 years
Apache	172	2	170	59	111
Cochise	246	2	244	84	160
Coconino	230	3	227	88	139
Gila	150	1	149	67	82
Graham	90	2	88	30	58
Greenlee	26	0	26	9	17
Maricopa	6,832	127	6,705	2,352	4,353
Mohave	323	6	317	97	220
Navajo	273	2	271	94	177
Pima	1,736	31	1705	590	1,115
Pinal	471	13	458	180	278
Santa Cruz	118	2	116	43	73
Yavapai	289	5	284	81	203
Yuma	473	9	464	160	304
La Paz	42	1	41	18	23
TOTAL STATE*	11,474	206	11,268	3,952	7,316

County of residence	BIRTH RATES:**				
	All 19 years or younger	10-14 years	15-19 years		
			Total	15-17 years	18-19 years
Apache	22.9	.5	50.4	26.2	98.9
Cochise	26.9	.4	54.7	30.4	94.4
Coconino	22.2	.6	42.3	29.8	57.7
Gila	40.6	.5	87.9	60.1	141.1
Graham	28.6	1.3	53.7	34.8	74.6
Greenlee	38.5	.0	78.8	40.0	161.9
Maricopa	30.2	1.1	60.9	36.3	96.3
Mohave	32.0	1.1	66.7	31.7	129.7
Navajo	27.1	.4	58.3	30.0	116.9
Pima	27.6	1.0	52.2	33.6	73.8
Pinal	36.7	1.9	75.8	47.3	124.4
Santa Cruz	32.3	1.0	68.8	38.9	125.6
Yavapai	26.4	.9	53.3	23.9	105.1
Yuma	36.3	1.3	75.4	42.8	126.0
La Paz	34.8	1.6	70.1	45.5	121.7
TOTAL STATE	29.8	1.0	59.7	35.5	94.3

* Includes records with unknown county of residence.
 ** The number of births per 1,000 females in specified group.

**TABLE 11
PREGNANCY RATES¹ AND NUMBER OF LIVE BIRTHS,
FETAL DEATHS AND ABORTIONS TO TEENS BY INDIVIDUAL AGE,
ARIZONA, 2002**

Age	Population	Live births	Abortions	Fetal deaths	TOTAL PREGNANCIES	
					Number	Rate
10	41,361	0	1	0	1	² 0.0
11	39,358	1	2	0	3	0.1
12	39,064	5	1	0	6	0.2
13	38,317	22	5	0	27	0.7
14	38,298	178	35	5	218	5.7
10-14	196,398	206	44	5	255	1.3
15	37,547	512	120	7	639	17.0
16	36,413	1,336	228	15	1,579	43.4
17	37,358	2,104	357	17	2,478	66.5
15-17	111,218	3,952	705	39	4,696	42.2
18	38,316	3,208	564	30	3,802	99.2
19	39,246	4,108	682	29	4,819	122.8
18-19	77,562	7,316	1,246	59	8,621	111.2
Total 10-19	385,178	11,474	1,995	103	13,572	35.2

1 Rates per 1,000 female population in specific group.

2 Quantity less than 0.05.

TABLE 13
ABORTIONS TO FEMALES 19 OR YOUNGER BY AGE AND COUNTY
OF RESIDENCE, ARIZONA, 2002

	Total	Age									
		10	11	12	13	14	15	16	17	18	19
TOTAL STATE	1,995	1	2	1	5	35	120	228	357	564	682
APACHE	2	0	0	0	0	0	0	0	0	0	2
COCHISE	32	0	0	1	0	0	2	7	6	9	7
COCONINO	38	0	0	0	0	1	4	1	6	10	16
GILA	7	0	0	0	0	0	0	0	1	4	2
GRAHAM	4	0	0	0	0	0	0	1	0	2	1
GREENLEE	1	0	0	0	0	1	0	0	0	0	0
MARICOPA	1,236	1	2	0	5	25	73	139	221	365	405
MOHAVE	2	0	0	0	0	0	0	0	0	2	0
NAVAJO	14	0	0	0	0	1	0	4	2	3	4
PIMA	529	0	0	0	0	5	32	60	97	130	205
PINAL	19	0	0	0	0	0	2	5	2	4	6
SANTA CRUZ	14	0	0	0	0	0	0	3	5	5	1
YAVAPAI	35	0	0	0	0	2	1	4	7	12	9
YUMA	28	0	0	0	0	0	3	4	4	4	13
LA PAZ	1	0	0	0	0	0	0	0	0	1	0
UNKNOWN	33	0	0	0	0	0	3	0	6	13	11

TABLE 14
SOURCES OF PAYMENT FOR LABOR AND DELIVERY, FEMALES 19 OR YOUNGER
BY COUNTY OF RESIDENCE, ARIZONA, 2002

	Total	Payee for birth				
		AHCCCS	IHS	Private insurance	Self	Unknown
TOTAL STATE	11,474	8,903	256	1,887	226	202
APACHE	172	110	28	8	1	25
COCHISE	246	177	0	60	7	2
COCONINO	230	154	42	21	10	3
GILA	150	81	42	26	0	1
GRAHAM	90	72	9	7	0	2
GREENLEE	26	21	1	4	0	0
MARICOPA	6,832	5,398	49	1,218	103	64
MOHAVE	323	247	0	34	4	38
NAVAJO	273	189	68	12	1	3
PIMA	1,736	1,375	13	298	19	31
PINAL	471	336	3	105	22	5
SANTA CRUZ	118	98	0	12	8	0
YAVAPAI	289	237	0	37	7	8
YUMA	473	386	1	41	42	3
LA PAZ	42	22	0	4	2	14
UNKNOWN	3	0	0	0	0	3

TABLE 15
SOURCES OF PAYMENT FOR LABOR AND DELIVERY, FEMALES 19 OR YOUNGER
BY AGE GROUP, ARIZONA, 2002

			Total	Mother's age group		
				<15	15-17	18-19
Total			11,474	206	3,952	7,316
Payee for birth	AHCCCS	Count	8,903	167	3,084	5,652
		Percent	77.6%	81.1%	78.0%	77.3%
	IHS	Count	256	4	103	149
		Percent	2.2%	1.9%	2.6%	2.0%
	Private insurance	Count	1,887	15	609	1,263
		Percent	16.4%	7.3%	15.4%	17.3%
	Self	Count	226	14	92	120
		Percent	2.0%	6.8%	2.3%	1.6%
	Unknown	Count	202	6	64	132
		Percent	1.8%	2.9%	1.6%	1.8%

TABLE 16
TEENAGE BIRTHS BY NUMBER OF PREVIOUS PREGNANCIES BY AGE GROUP,
ARIZONA, 2002

			Total	Mother's age group		
				<15	15-17	18-19
Total			11,474	206	3,952	7,316
Total prior pregnancies	None	Count	8,218	194	3,297	4,727
		Percent	71.6%	94.2%	83.4%	64.6%
	1	Count	2,540	11	575	1,954
		Percent	22.1%	5.3%	14.5%	26.7%
	2	Count	523	0	56	467
		Percent	4.6%	0.0%	1.4%	6.4%
	3	Count	121	0	10	111
		Percent	1.1%	0.0%	0.3%	1.5%
	4 or more	Count	33	0	3	30
		Percent	0.3%	0.0%	0.1%	0.4%
	Unknown	Count	39	1	11	27
		Percent	0.3%	0.5%	0.3%	0.4%

**TABLE 17
TEENAGE BIRTHS BY MARITAL STATUS AND AGE GROUP, ARIZONA, 2002**

			Total	Mother's age group		
				<15	15-17	18-19
Total			11,474	206	3,952	7,316
Marital status	Married	Count	2,030	5	342	1,683
		Percent	17.7%	2.4%	8.7%	23.0%
	Unmarried	Count	9,416	201	3,607	5,608
		Percent	82.1%	97.6%	91.3%	76.7%
	Other	Count	28	0	3	25
		Percent	0.2%	0.0%	0.1%	0.3%

**TABLE 18
TEENAGE BIRTHS BY MOTHER'S EDUCATION AND AGE GROUP, ARIZONA, 2002**

			Total	Mother's age group		
				<15	15-17	18-19
Total			11,474	206	3,952	7,316
Mother's education	< 8	Count	682	59	235	388
		Percent	5.9%	28.6%	5.9%	5.3%
	8	Count	850	86	409	355
		Percent	7.4%	41.7%	10.3%	4.9%
	9-11	Count	5,956	53	2,840	3,063
		Percent	51.9%	25.7%	71.9%	41.9%
	12	Count	3,206	0	394	2,812
		Percent	27.9%	0.0%	10.0%	38.4%
	13-16	Count	569	0	15	554
		Percent	5.0%	0.0%	0.4%	7.6%
	Unknown	Count	2	0	0	2
		Percent	0.0%	0.0%	0.0%	0.0%

TABLE 19
TEENAGE BIRTHS BY TRIMESTER OF ENTRY INTO PRENATAL CARE AND
AGE GROUP, ARIZONA, 2002

		Total	Mother's age group		
			<15	15-17	18-19
Total		11,474	206	3,952	7,316
No care	Count	402	12	170	220
	Percent	3.5%	5.8%	4.3%	3.0%
1st trimester	Count	7,120	95	2,263	4,762
	Percent	62.1%	46.1%	57.3%	65.1%
2nd trimester	Count	2,972	66	1,147	1,759
	Percent	25.9%	32.0%	29.0%	24.0%
3rd trimester	Count	811	27	315	469
	Percent	7.1%	13.1%	8.0%	6.4%
Unknown	Count	169	6	57	106
	Percent	1.5%	2.9%	1.4%	1.4%

**TABLE 20
TEENAGE BIRTHS BY NUMBER OF PRENATAL VISITS BY AGE GROUP,
ARIZONA, 2002**

			Total	Mother's age group		
				<15	15-17	18-19
Total			11,474	206	3,952	7,316
Number of prenatal visits	No visits	Count	402	12	170	220
		Percent	3.5%	5.8%	4.3%	3.0%
	1-4 visits	Count	770	20	306	444
		Percent	6.7%	9.7%	7.7%	6.1%
	5-8 visits	Count	2,466	51	900	1,515
		Percent	21.5%	24.8%	22.8%	20.7%
	9-12 visits	Count	4,524	72	1,501	2,951
		Percent	39.4%	35.0%	38.0%	40.3%
	13+ visits	Count	3,080	42	992	2,046
		Percent	26.8%	20.4%	25.1%	28.0%
	Unknown	Count	232	9	83	140
		Percent	2.0%	4.4%	2.1%	1.9%

**TABLE 21
TOBACCO AND/OR ALCOHOL USE DURING PREGNANCY AMONG FEMALES 19
OR YOUNGER BY AGE GROUP, ARIZONA, 2002**

			Total	Mother's age group		
				<15	15-17	18-19
Total			11,474	206	3,952	7,316
Substance use	Drinker, nonsmoker	Count	37	2	14	21
		Percent	0.3%	1.0%	0.4%	0.3%
	Smoker, nondrinker	Count	703	3	183	517
		Percent	6.1%	1.5%	4.6%	7.1%
	Smoker and drinker	Count	38	0	13	25
		Percent	0.3%	0.0%	0.3%	0.3%
	Nonsmoker nondrinker	Count	10,696	201	3,742	6,753
		Percent	93.2%	97.6%	94.7%	92.3%

**TABLE 22
RISK FOR LOW-BIRTHWEIGHT (LBW) BIRTHS BY SELECTED CHARACTERISTICS
OF FEMALES 19 OR YOUNGER, ARIZONA, 2002**

		Mother's age group								
		<15			15-17			18-19		
		Total births	LBW births		Total births	LBW births		Total births	LBW births	
		Count	Count	Percent	Count	Count	Percent	Count	Count	Percent
Race/ ethnicity	White non Hispanic	23	3	13.0%	824	72	8.7%	2,217	168	7.6%
	Hispanic	147	13	8.8%	2,507	202	8.1%	3,931	282	7.2%
	Black	12	0	0.0%	152	20	13.2%	304	39	12.8%
	American Indian	18	0	0.0%	374	24	6.4%	647	34	5.3%
	Asian	1	0	0.0%	19	1	5.3%	76	12	15.8%
	Unknown	5	0	0.0%	76	5	6.6%	141	9	6.4%
Substance use	Drinker, nonsmoker	2	0	0.0%	14	1	7.1%	21	1	4.8%
	Smoker, nondrinker	3	1	33.3%	183	18	9.8%	517	65	12.6%
	Smoker and drinker	0	0	0.0%	13	0	0.0%	25	1	4.0%
	Nonsmoker and nondrinker	201	15	7.5%	3,742	305	8.2%	6,753	477	7.1%
Payee for birth	AHCCCS	167	12	7.2%	3,084	260	8.4%	5,652	429	7.6%
	IHS	4	0	0.0%	103	6	5.8%	149	9	6.0%
	Private insurance	15	2	13.3%	609	44	7.2%	1,263	79	6.3%
	Self	14	1	7.1%	92	11	12.0%	120	13	10.8%
Length of gestation	Preterm (36 weeks or less)	6	1	16.7%	64	3	4.7%	132	14	10.6%
	Term (37 weeks or more)	27	12	44.4%	435	219	50.3%	686	363	52.9%
	Unknown	179	4	2.2%	3,517	105	3.0%	6,630	181	2.7%
Prenatal Visits	<5 visits	32	6	18.8%	476	69	14.5%	664	87	13.1%
	5 or more visits	165	7	4.2%	3,393	248	7.3%	6,512	447	6.9%
	Unknown	9	3	33.3%	83	7	8.4%	140	10	7.1%

Low birthweight: any neonate weighing less than 2,500 grams (less than 5 pounds 8 ounces).

**TABLE 23
LIVE BIRTHS TO FEMALES 19 OR YOUNGER AS PERCENTAGE OF TOTAL
LIVE BIRTHS BY AREA, ETHNIC GROUP AND YEAR, ARIZONA, 1992-2002**

Group	1992	1993	1994	1995	1996	1997	1998	1999	2000	2001	2002
ARIZONA, TOTAL¹											
# Births (all ages)	68,675	69,037	70,896	72,386	75,094	75,563	77,940	80,505	84,985	85,213	87,379
# Births to Teenagers	10,307	10,438	10,858	10,973	11,247	11,085	11,695	11,963	12,189	11,790	11,474
% Births to Teenagers	15.0	15.1	15.3	15.2	15.0	14.7	15.0	14.9	14.3	13.8	13.1
URBAN COUNTIES²											
# Births (all ages)	54,391	54,627	58,733	60,293	62,879	63,510	65,825	68,611	72,596	73,319	74,851
# Births to Teenagers	7,852	7,887	8,862	8,956	9,234	9,076	9,605	9,896	10,102	9,906	9,512
% Births to Teenagers	14.4	14.4	15.1	14.9	14.7	14.3	14.6	14.4	13.9	13.5	10.4
RURAL COUNTIES											
# Births (all ages)	14,284	14,410	12,163	12,093	12,215	12,053	12,115	11,877	12,333	11,851	12,498
# Births to Teenagers	2,455	2,551	1,996	2,017	2,009	2,009	2,090	2,067	2,083	1,882	1,959
% Births to Teenagers	17.2	17.7	16.4	16.7	16.4	16.7	17.3	17.4	16.9	15.9	19.6
WHITE NON-HISPANIC											
# Births (all ages)	37,727	37,381	37,780	38,488	38,494	37,869	38,611	38,711	39,850	38,934	38,819
# Births to Teenagers	4,060	4,024	4,023	4,042	4,033	3,733	3,843	3,869	3,759	3,396	3,064
% Births to Teenagers	10.8	10.8	10.6	10.5	10.5	9.9	10.0	10.0	9.4	8.7	7.9
HISPANIC											
# Births (all ages)	21,553	22,247	23,724	25,141	27,396	27,941	28,824	30,784	33,893	35,103	36,089
# Births to Teenagers	4,543	4,688	5,075	5,351	5,628	5,736	5,951	6,161	6,548	6,648	6,585
% Births to Teenagers	21.1	21.1	21.4	21.3	20.5	20.5	20.6	20.0	19.3	18.9	18.2
BLACK											
# Births (all ages)	2,447	2,402	2,477	2,233	2,336	2,485	2,629	2,699	2,760	2,736	2,753
# Births to Teenagers	570	581	576	491	498	519	586	603	572	545	468
% Births to Teenagers	23.3	24.2	23.3	22.0	21.3	20.9	22.3	22.3	20.7	19.9	17.0
AMERICAN INDIAN											
# Births (all ages)	5,872	5,781	5,513	5,086	5,328	5,271	5,460	5,295	5,602	5,340	5,545
# Births to Teenagers	1,080	1,060	1,095	991	996	971	1,122	1,050	1,089	1,013	1,039
% Births to Teenagers	18.4	18.3	19.9	19.5	18.6	18.4	20.6	19.8	19.4	19.0	19.0
ASIANS											
# Births (all ages)	1,035	1,162	1,271	1,342	1,427	1,602	1,747	1,875	2,041	2,104	2,281
# Births to Teenagers	49	79	72	85	76	66	73	92	100	104	96
% Births to Teenagers	4.7	6.8	5.7	6.3	5.3	4.1	4.2	4.9	4.9	4.9	4.2

¹ Includes records for ethnic groups other than White, Hispanic, Black, American Indian or Asian.

² Urban = Maricopa, Pima, Pinal, and Yuma. The remaining counties comprise Arizona's rural areas.

**TABLE 24
BIRTH RATES BY AGE GROUP FOR FEMALES 19 OR YOUNGER,
ARIZONA AND UNITED STATES, 1992-2002**

Year	Under 15 Years		15 - 19 Years Old					
	AZ	U.S.	Total		15-17 Years		18-19 Years	
			AZ	U.S.	AZ	U.S.	AZ	U.S.
1992	1.4	1.4	75.9	60.7	50.7	37.8	114.1	94.5
1993	1.3	1.4	82.1	59.6	51.2	37.8	116.4	92.1
1994	1.7	1.4	82.8	58.9	53.0	37.6	118.5	91.5
1995	1.6	1.3	79.1	56.8	50.1	36.0	117.1	89.1
1996	1.4	1.2	76.1	54.4	49.0	33.8	119.0	86.0
1997	1.4	1.1	72.8	52.3	46.1	32.1	114.9	83.6
1998	1.4	1.0	73.9	51.1	47.0	30.4	114.9	82.0
1999	1.4	0.9	72.9	49.6	43.7	28.7	117.1	80.3
2000	1.2	0.9	67.6	48.5	41.1	27.4	105.7	78.1
2001	1.0	0.8	63.3	45.3	37.8	24.7	99.9	76.1
2002	1.0	0.7	59.7	42.9	35.5	23.2	94.3	72.7

Note: the U.S. data are from the National vital statistics reports published by the National Center for Health Statistics.

**TABLE 25
REPEAT PREGNANCIES AMONG TEENAGE MOTHERS GIVING BIRTHS BY AGE AND YEAR,
ARIZONA, 1992-2002**

MOTHER'S AGE			YEAR OF BIRTH										
			1992	1993	1994	1995	1996	1997	1998	1999	2000	2001	2002
11	Total		0	0	1	0	1	1	0	0	0	0	1
	Previous pregnancies	None	0	0	1	0	1	1	0	0	0	0	1
		One or more	0	0	0	0	0	0	0	0	0	0	0
12	Total		1	2	3	6	3	4	5	2	4	3	5
	Previous pregnancies	None	1	2	3	6	3	4	4	2	4	3	5
		One or more	0	0	0	0	0	0	1	0	0	0	0
13	Total		32	27	45	32	34	33	34	36	37	28	22
	Previous pregnancies	None	31	26	43	31	32	33	33	36	35	28	21
		One or more	1	1	2	1	2	0	1	0	2	0	0
		Unknown	0	0	0	0	0	0	0	0	0	0	1
14	Total		155	158	197	191	178	176	195	200	175	167	178
	Previous pregnancies	None	146	152	188	181	174	165	186	189	3172	157	167
		One or more	9	6	9	10	4	11	9	11	3	10	11
15	Total		561	555	664	649	658	598	651	595	647	620	512
	Previous pregnancies	None	517	512	601	588	613	553	597	559	604	569	470
		One or more	44	43	63	61	45	41	51	35	36	49	41
		Unknown	0	0	0	0	0	4	3	1	3	2	1
16	Total		1180	1303	1315	1337	1434	1363	1443	1388	1376	1353	1336
	Previous pregnancies	None	985	1121	1126	1175	1239	1175	1261	1207	1205	1171	1169
		One or more	195	182	189	162	195	182	175	177	163	176	166
		Unknown	0	0	0	0	0	6	7	4	8	6	1
17	Total		2097	2012	2153	2192	2248	2258	2303	2253	2261	2107	2104
	Previous pregnancies	None	1559	1507	1669	1710	1778	1729	1831	1772	1806	1634	1658
		One or more	538	505	484	482	470	516	463	475	447	464	437
		Unknown	0	0	0	0	0	13	9	6	8	9	9
18	Total		2848	2862	2865	3005	2926	2902	3153	3300	3338	3168	3208
	Previous pregnancies	None	1839	1864	1911	2050	2032	1951	2138	2247	2313	2161	2231
		One or more	1009	998	954	955	894	939	1002	1041	1014	988	967
		Unknown	0	0	0	0	0	12	13	12	11	19	10
19	Total		3433	3519	3615	3561	3765	3750	3911	4189	4351	4344	4108
	Previous pregnancies	None	1961	1983	2117	2149	2194	2180	2284	2485	2627	2597	2496
		One or more	1472	1536	1498	1412	1571	1554	1606	1680	1706	1735	1595
		Unknown	0	0	0	0	0	16	21	24	18	12	17

**TABLE 26
CUMULATIVE NUMBER OF MOTHERS WHO WERE 19 OR
YOUNGER IN ARIZONA IN 2002**

Year Baby Was Born	MOTHER'S AGE WHEN BABY WAS BORN										Mother was 19 or younger in 2002
	10	11	12	13	14	15	16	17	18	19	
1993	0										0
1994	0	1									1
1995	0	0	6								6
1996	0	1	3	34							38
1997	0	1	4	33	176						214
1998	0	0	5	34	195	651					885
1999	0	0	2	36	200	595	1,388				2,221
2000	0	0	4	37	175	647	1,376	2,261			4,500
2001	0	0	3	28	167	620	1,352	2,107	3,168		7,445
2002	0	1	5	22	178	512	1,336	2,104	3,208	4,108	11,474
Cumulative number of mothers 19 or younger	0	4	32	224	1,091	3,025	5,452	6,472	6,376	4,108	26,784

NOTE: The above table focuses on the 2002 cohort of Arizona mothers who were 19 or less years old that year. Among them are those who:

- gave birth to the 11,474 babies in 2002
- gave birth to a baby prior to 2002 and were still 19 or less years old in 2002.

The numbers below the main diagonal (and below the stair-like line) represent the number of mothers meeting either one of the above criteria. The last column to the right gives the cumulative total for 2002 by the year baby was born. For example, from among those girls and adolescents who had their baby in 1996, 38 remained in their teens in 2002. The bottom row gives the cumulative total by mother's age when baby was born. For example, among the 26,784 mothers under 20 in Arizona in 2002, 1,091 had given birth when 14 years old.

Excluded from the cumulative totals and not shown above the main diagonal (and above stair-like line) are the numbers of mothers who were 19 years old when the baby was born, but who were no longer under the age 20 by 2001. For example, mothers who were 11 years old in 1993 were 20 years old in 2002.

The figures in Table 26 are unadjusted for in-and-out migration, as well as mortality of mothers, in the period of 1992-2002.

**TABLE 27
POPULATION OF FEMALES 19 OR YOUNGER, NUMBER OF PREGNANCIES AND
PREGNANCY RATES BY AGE GROUP AND RACE/ETHNICITY, ARIZONA, 2002**

	POPULATION*				
	All 19 years or younger	10-14 years	15-19 years total	15-19 years	
				15-17 years	18-19 years
White non-Hispanic	203,665	102,160	101,505	59,434	42,071
Hispanic	126,431	65,337	61,094	35,851	25,243
Black	14,224	7,515	6,709	4,019	2,690
American Indian	29,581	15,795	13,786	8,614	5,172
Asian	6,802	3,185	3,617	1,993	1,624
ALL GROUPS	385,178	196,398	188,780	111,218	77,562

	NUMBER OF PREGNANCIES				
	All 19 years or younger	10-14 years	15-19 years total	15-19 years	
				15-17 years	18-19 years
White non-Hispanic	4,102	43	4,059	1,202	2,857
Hispanic	7,287	165	7,122	2,761	4,361
Black	605	18	587	189	398
American Indian	1,082	21	1,061	388	673
Asian	130	1	129	29	100
Other or unknown	366	7	359	127	232
ALL GROUPS	13,572	255	13,317	4,696	8,621

	PREGNANCY RATES**				
	All 19 years or younger	10-14 years	15-19 years total	15-19 years	
				15-17 years	18-19 years
White non-Hispanic	20.1	0.4	40.0	20.2	67.9
Hispanic	57.6	2.5	116.6	77.0	172.8
Black	42.5	2.4	87.5	47.0	148.0
American Indian	36.6	1.3	77.0	45.1	130.1
Asian	19.1	0.3	35.7	14.6	61.6
ALL GROUPS	35.2	1.3	70.6	42.2	111.2

*In order to obtain the 2002 population denominators, the 2000 percentages of population breakdowns (or census shares) by age group and gender were applied to total state and county population estimates for 2002 released by the Department of Economic Security on 12/6/02. The total for all groups includes racial/ethnic groups other than White non-Hispanic, Hispanic, Black, American Indian and Asian.

**Number of pregnancies per 1,000 females in specified group.

**TABLE 28
POPULATION OF FEMALES 19 OR YOUNGER
BY COUNTY OF RESIDENCE, ARIZONA, 2002**

County of residence	All 19 years or younger	10-14 years	15-19 years, total	15-19 years	
				15-17 years	18-19 years
Apache	7,504	4,128	3,376	2,254	1,122
Cochise	9,130	4,668	4,462	2,767	1,695
Coconino	10,344	4,982	5,362	2,953	2,409
Gila	3,699	2,004	1,695	1,114	581
Graham	3,142	1,503	1,639	861	778
Greenlee	675	345	330	225	105
Maricopa	225,953	115,866	110,088	64,874	45,213
Mohave	10,099	5,345	4,754	3,058	1,696
Navajo	10,084	5,438	4,646	3,132	1,514
Pima	62,895	30,257	32,637	17,539	15,099
Pinal	12,841	6,801	6,040	3,805	2,235
Santa Cruz	3,658	1,973	1,685	1,104	581
Yavapai	10,934	5,608	5,326	3,394	1,932
Yuma	13,013	6,858	6,155	3,742	2,413
La Paz	1,207	622	585	396	189
TOTAL STATE	385,178	196,398	188,780	111,218	77,562

NOTE: In order to obtain the 2002 population denominators, the 2000 percentages of population breakdowns (or census shares) by age group and gender were applied to total state and county population estimates for 2002 released by the Department of Economic Security on 12/6/02.