



TEENAGE PREGNANCY

Arizona, 1991-2001



Public Health Services

**Bureau of Public Health Statistics
Health Status and Vital Statistics Section**

Teenage pregnancy, 1991-2001

SOURCE: <http://www.azdhs.gov/plan/report/tp/teen01/index.htm>

Introduction/Key Findings/Figures

Tables:

1 Pregnancies and pregnancy outcomes by age group and year, females 19 or less years old, Arizona, 1991-2001

2 Pregnancy rates by pregnancy outcome, age group and year, females 19 or less years old, Arizona, 1991-2001

3 Live births to females 19 or less years old by age group ethnic group and year, Arizona, 1991-2001

4 Abortions to females 19 or less years old by age group, ethnic group and year, Arizona, 1991-2001

5 Number of pregnancies by pregnancy outcome, ethnic group and year among females aged 17 and younger with rates, Arizona, 1991-2001

6 Number of pregnancies by pregnancy outcome, ethnic group and year among females 15-17 years old with rates, Arizona, 1991-2001

7 Number of pregnancies by pregnancy outcome, ethnic group and year among females 18-19 years old with rates, Arizona, 1991-2001

8 Number of pregnancies by pregnancy outcome, ethnic group and year among females 19 or less years old with rates, Arizona, 1991-2001

9 Trends in pregnancy rates by county of residence among females 10-17 and 18-19 years old, Arizona, 1991-2001

10A Pregnancies and pregnancy rates, females 19 or less years old by county of residence, Arizona, 2001

10B Births and birth rates, females 19 or less years old by county of residence, Arizona, 2001

11 Pregnancy rates and number of live births, fetal deaths and abortions to teens by individual age, Arizona, 2001

12 Births to females 19 or less years old by age and county of residence, Arizona, 2001

13 Abortions to females 19 or less years old by age and county of residence, Arizona, 2001

- 14 Sources of payment for labor and delivery, females 19 or less years old by county of residence, Arizona, 2001
- 15 Sources of payment for labor and delivery, females 19 or less years old by age group, Arizona, 2001
- 16 Teenage births by number of previous pregnancies by age group, Arizona, 2001
- 17 Teenage births by marital status and age group, Arizona, 2001
- 18 Teenage births by mother's education and age group, Arizona, 2001
- 19 Teenage births by trimester of entry into prenatal care and age group, Arizona, 2001
- 20 Teenage births by number of prenatal visits and age group, Arizona, 2001
- 21 Tobacco and/or alcohol use during pregnancy among females 19 or less years old by age group, Arizona, 2001
- 22 Risk for low-birthweight (LBW) births by selected characteristics of females 19 or less years old, Arizona, 2001
- 23 Live births to females 19 or less years of age as a percentage of total live births by area, ethnic group and year, Arizona. 1991-2001
- 24 Birth rates by age group for females 19 or less years old, Arizona and United States, 1991-2001
- 25 Repeat pregnancies among teenage mothers giving birth by age and year, Arizona, 1991-2001
- 26 Cumulative number of mothers who were 19 or less years old in Arizona in 2001
- 27 Population of females 19 or less years old, number of pregnancies and pregnancy rates by age group and race/ethnicity, Arizona, 2001
- 28 Population of females 19 or less years old by county of residence, Arizona 2001

Prepared and made Web-ready by:
Christopher K. Mrela, Ph.D., Assistant Registrar of Vital Statistics,
Trentham Coe, Senior Research Data Analyst

PURPOSE

This report is the 2001 update of information about pregnancies among females under age 20. The data for 2001 are placed in a temporal context by comparison with the data for the preceding years.

METHODS AND SOURCES

In this report, pregnancies are measured as the sum of three components: live births, fetal deaths (or stillbirths) and reported abortions to Arizona resident women, unless otherwise specified. It does not include spontaneous fetal losses that occur at less than 20 weeks of gestation. Induced terminations of pregnancy do not include those performed out-of-state to Arizona residents, since they are not reported. Pregnancy statistics for Arizona are not available on a sub-county level.

Teens or teenagers are defined as 10-14 year old preadolescents and adolescents 15-19 years of age. Where possible, the data presented distinguish 18-19 year old teenagers from those aged 15-17 and girls less than 15 years of age.

The primary source documents for the data are the certificates of live births, certificates of fetal deaths and reports of induced terminations of pregnancy filed with the Arizona Department of Health Services.

Population denominators for Arizona's resident females, used to calculate rates, are projections from the Population Statistics Unit in the Arizona Department of Economic Security (data for 1991-1999) or census enumerations from the U.S. Census Bureau (data for 1980, 1990 and 2000).

In order to obtain the population denominators for 2001, the 2000 percentages of population breakdowns (or census shares) by age group and gender were applied to total state and

total county population estimates released by the Bureau of the Census on 4/26/2002 (<http://eire.census.gov/popest/estimates.php>).

DATA ORGANIZATION

Tables 1-9 present annual numbers and rates of pregnancy, fertility and abortion by year from 1991 to 2001, age group and ethnicity for Arizona adolescents. Temporal trends and changes may be assessed from these data. Table 11 provides pregnancy rates by single year of age among females aged 19 and younger. Tables 9-10 and 12-14 provide data by county of residence. Live births to teenage mothers are also reported in Tables 15-22 by marital status, education, previous pregnancies, trimester of entry into prenatal care, source of payment for labor and delivery and tobacco and alcohol use during pregnancy. Proportional contribution of teen births to all births is shown in Table 23 by area of residence and ethnic group in Arizona from 1990 to 2000. Table 24 compares birth rates in Arizona and United States.

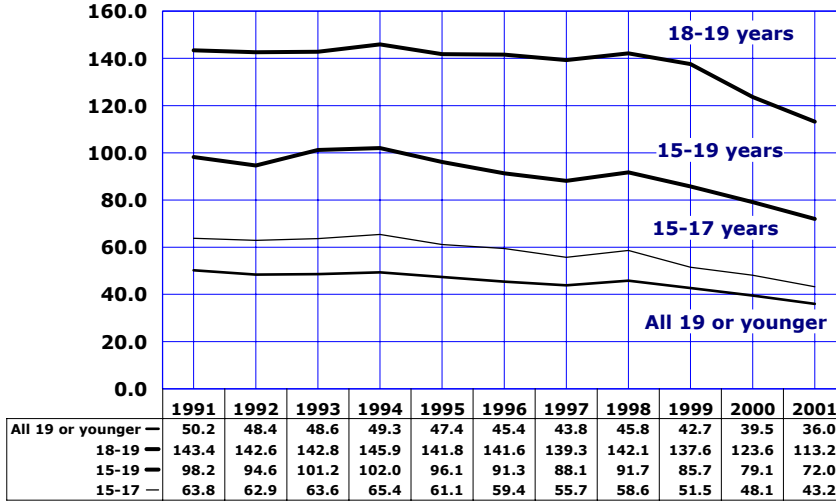
The annual numbers of repeat pregnancies among teenage mothers are shown by age and year from 1991 to 2001 in Table 25. The estimated number of mothers who were under the age of 20 in Arizona in 2001 is given in Table 26. The 2001 population denominators for Arizona resident females by age group and county of residence, as well as by age group and ethnicity are presented in Table 27 and Table 28.

KEY FINDINGS

The following section presents some illustrative findings contained in the figures and tables of the report. It is not intended to be an exhaustive analysis of the tabulated data.

KEY FINDINGS

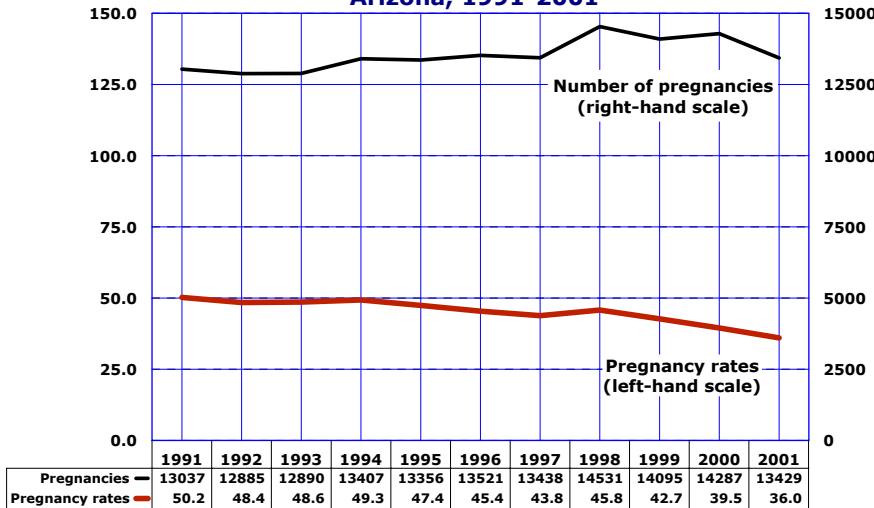
Figure 1
Pregnancy Rates by Age Group and Year Among Females 19 and Younger, Arizona, 1991-2001



Note: All rates are per 1,000 females in specified age group.

The pregnancy rate for Arizona teenagers 15-19 years old in 2001 was 72 pregnancies per 1,000 females (**Figure 1**), nine percent lower than in 2000 and 29.4 percent lower than in 1994 when it reached the decade's peak of 102.0/1,000. The pregnancy rate for older teenagers 18-19 years old reached a record low in 2001, dropping to 113.2/1,000, down 8.4 percent from 2000, and 22.4 percent from the rate of 145.9/1,000 in 1994. The pregnancy rate for younger teenagers 15-17 years old declined even more steeply in 2001 to 43.2/1,000, down 10.2 percent from 2000, and 33.9 percent from 1994 (**Figure 1**).

Figure 2
Trends in the Number of Pregnancies and Pregnancy Rates Among Females 19 Years and Younger, Arizona, 1991-2001



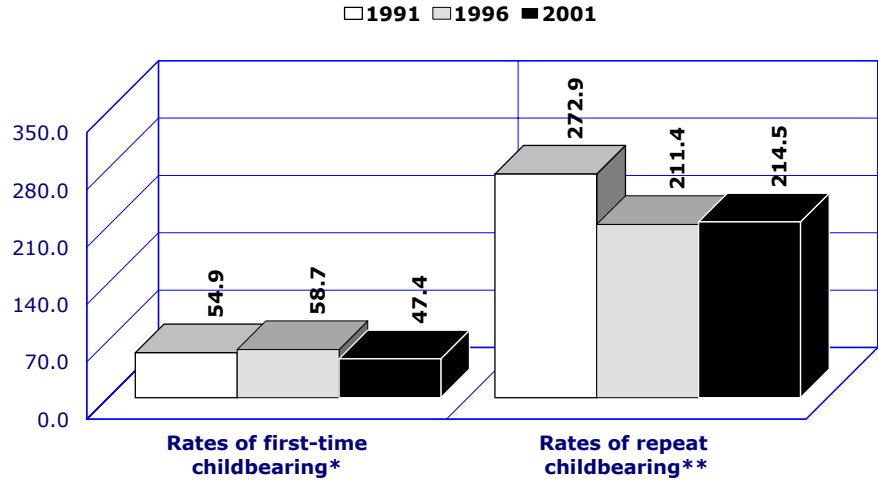
Pregnancy rate=The number of pregnancies per 1,000 females in specified age group

The pregnancy rate measures the proportion of teenagers becoming pregnant in a given year; the relative "risk for pregnancy" in a population "at risk". The number of pregnancies is, however, also determined by the size of the population "at risk": by the number of teenage females in the population. While the teen pregnancy rate has fallen in Arizona, the drop in the rate has not been enough to offset the growth in the female teenage population. **Compared to 1991, there were no fewer teen pregnancies in 2001 (13,037 and 13,429 respectively) (Figure 2), but fewer pregnancies per 1,000 teenage females.**

KEY FINDINGS

The declines in teenage birth rates in the second half of the 1990s have reflected reductions in the first birth rate, meaning that fewer teenagers are becoming mothers for the first time (**Figure 3**). The first birth rate for childless teenagers has dropped 19.2 percent since 1996. The rate in 2001 was 47.4 births per 1,000 females aged 15-19 years who had not had a birth. After falling 22.5 percent between 1991 and 1996, the second birth rate for teenagers who had already had one child stabilized (**Figure 3**). In 1991, the rate was 272.9 second births per 1,000 women aged 15-19 years with one child, and dropped to 211.4 in 1996; the rate has changed little since (214.5 in 2001). To put it another way, 21 percent of teenagers who already had one child gave birth to a second child in 2001, compared with 27 percent in 1991.

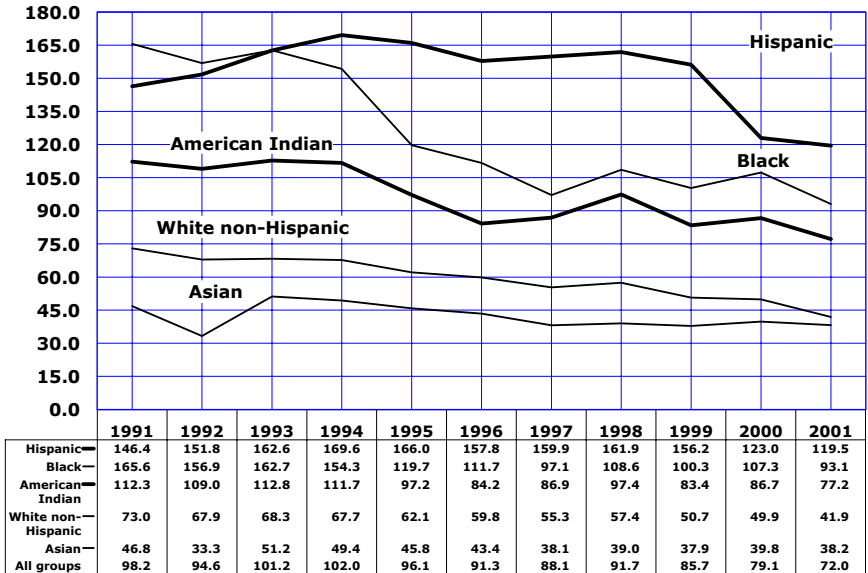
Figure 3
Rates of First and Repeat Births to Females Aged 15-19 Years, Arizona, 1991, 1996 and 2001



* Number first births per 1,000 females 15-19 years old who have not had a birth.
**Number of repeat births per 1,000 females 15-19 years old who have had a birth previously.

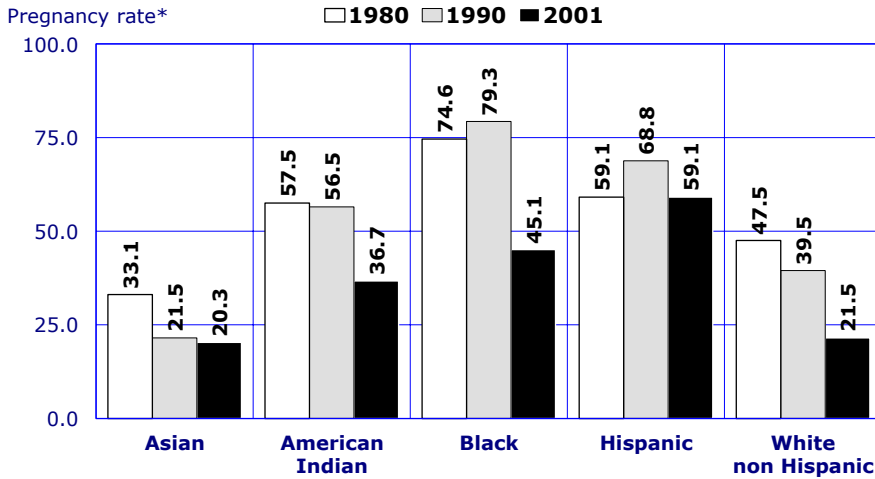
Figure 4
Trends in Pregnancy Rates by Race/Ethnicity Among Females 15-19 Years Old, Arizona, 1991-2001

The pregnancy rates of Hispanic, Black, and American Indian teenagers exceeded the corresponding rates of White non-Hispanic and Asian females in every age group in 2001. Hispanic teenage females continued to have the highest age-specific pregnancy rates among all ethnic groups, followed by Blacks, American Indians, White non-Hispanics and Asians. Among females 15-19 years old, the Hispanic to White non-Hispanic differential in pregnancy rates was 2.8 times (119.5 vs. 41.9, **Figure 4**) in 2001.



KEY FINDINGS

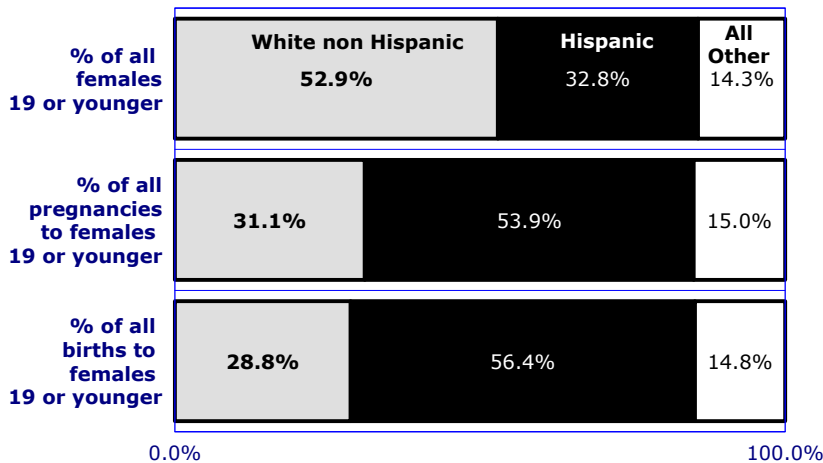
Figure 5
Comparison of Pregnancy Rates by Ethnic Group Among
Females Aged 19 and Younger in Arizona in
1980, 1990 and 2001



* Number of pregnancies per 1,000 females 10-19 years old in specified group.

Between 1980 and 2001, pregnancy rates declined for Asian, American Indian, Black, and White non-Hispanic populations (**Figure 5**), with the steepest decline recorded for White non-Hispanic teens. In contrast, Hispanic females aged 19 and younger were the only group for whom the 2001 pregnancy rate was identical with the 1980 rate of 59.1/1,000.

Figure 6
Proportional Contribution by Race/Ethnicity to
Pregnancies and Live Births Among Females 19 or
Younger, Arizona, 2001

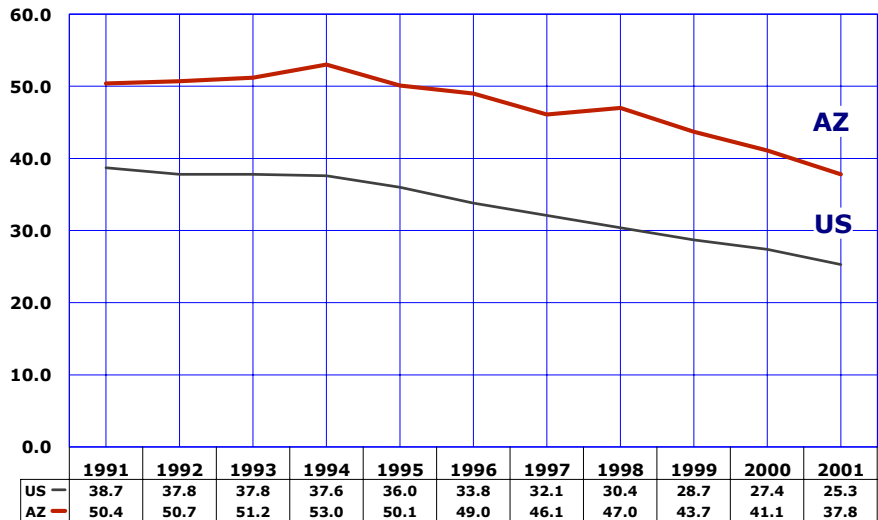


Hispanics, who accounted for 32.8 percent of all females 19 or younger in Arizona in 2001, made a significantly higher proportional contribution to teen pregnancies (53.9 percent) and live births (56.4 percent). In contrast, White non-Hispanic females who accounted for 52.9 percent of all teens in Arizona had a much lower proportional representation among teen pregnancies (31.1 percent) and live births (28.8 percent, **Figure 6**).

KEY FINDINGS

Figure 7
Birth Rates* Among Females 15-17 Years Old,
Arizona and United States, 1991-2001

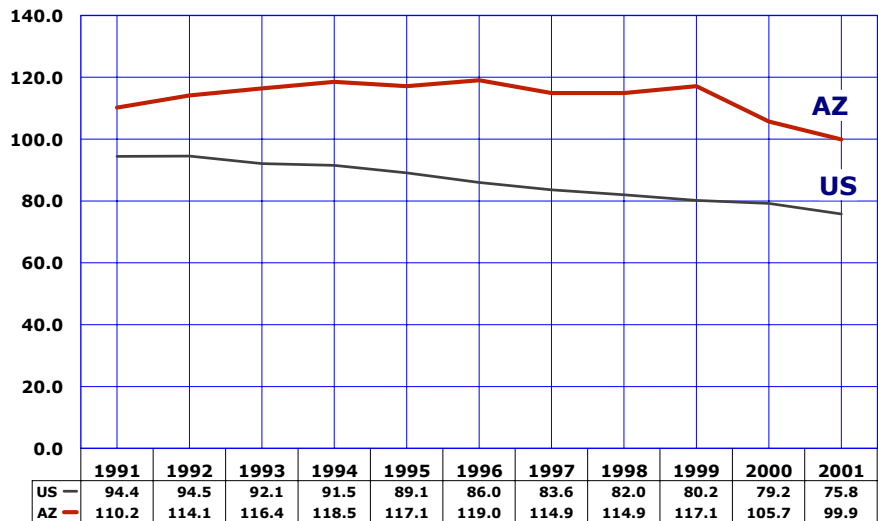
Between 1991 and 2001, the birth rates of Arizona younger (15-17 years) and older (18-19 years) adolescents have been consistently higher than the national rates (**Figure 7, Figure 8**). The 2001 Arizona birth rate of 37.8/1,000 was 49.4 percent greater than the birth rate of 25.3/1,000 for all U.S. teenagers aged 15-17 years (**Table 24**).



* Number of births per 1,000 females 15-17 years old.

Figure 8
Birth Rates* Among Females 18-19 Years Old,
Arizona and United States, 1991-2001

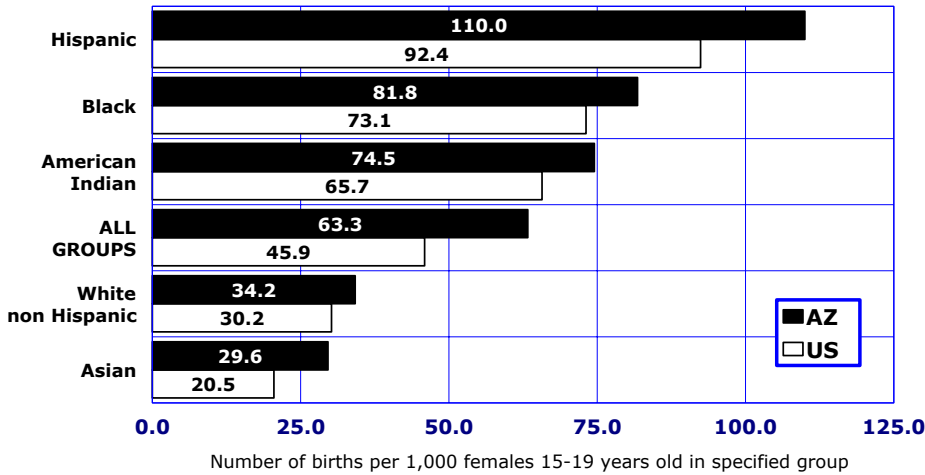
The 2001 Arizona birth rate of 99.9/1,000 was 31.8 percent greater than the birth rate of 75.8/1,000 for all U.S. teenagers aged 18-19 years (**Figure 8, Table 24**).



* Number of births per 1,000 females 18-19 years old.

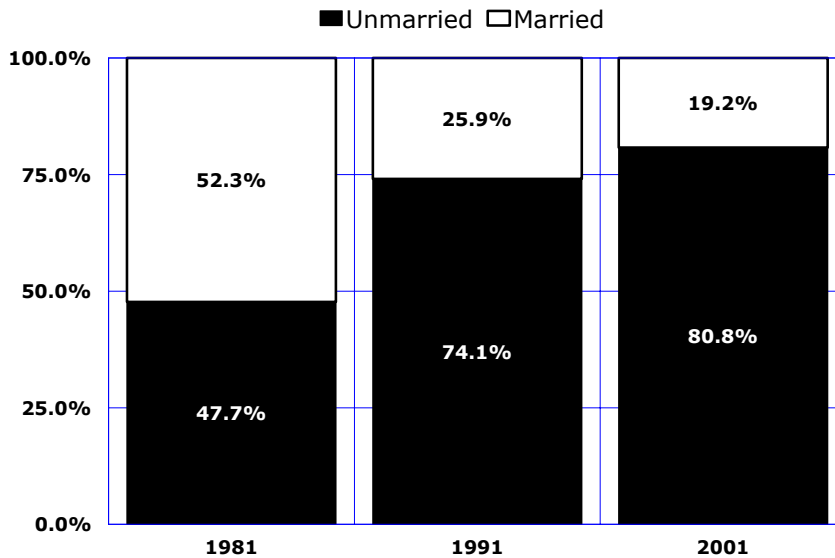
KEY FINDINGS

Figure 9
Birth Rates by Race/Ethnic Group Among Females 15-19
Years Old, Arizona and United States, 2001



Among teens aged 15-19 in 2001, Arizona birth rates were greater in every race/ethnic group than among their respective national peers (Figure 9).

Figure 10
Births to Mothers 15-19 Years Old by Marital Status,
Arizona, 1981, 1991 and 2001



Unwed mothers have accounted for an increasing annual proportion of births throughout the 1980s and 1990s. Two decades ago, the proportion of nonmarital births among teenagers aged 15-19 years was still below 50 percent (Figure 10). In 2001, nonmarital births accounted for eight out of ten births to mothers 15-19 years old.

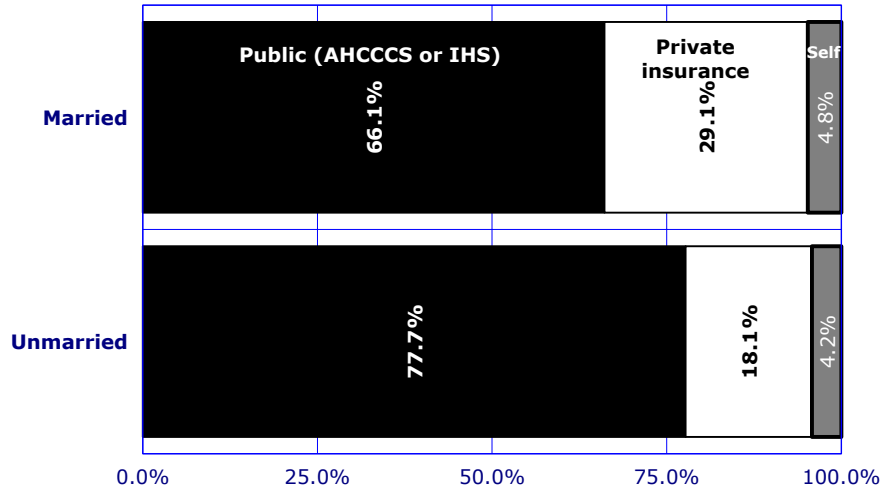
KEY FINDINGS

The Arizona Health Care Cost Containment System (AHCCCS) paid for 45.4 percent of the total deliveries in 2001, but 73.7 percent of the deliveries to mothers 19 or younger.

Among AHCCCS mothers, 22.5 percent were teenagers under the age 20 compared to 5.7 percent of women giving birth in 2001 who had private insurance coverage.

Married mothers 15-19 years old are less likely than unmarried to utilize public sources of payment for birth (66.1 vs. 77.7 percent, **Figure 11**), and more likely to have private health insurance coverage (29.1 vs. 18.1 percent, **Figure 11**).

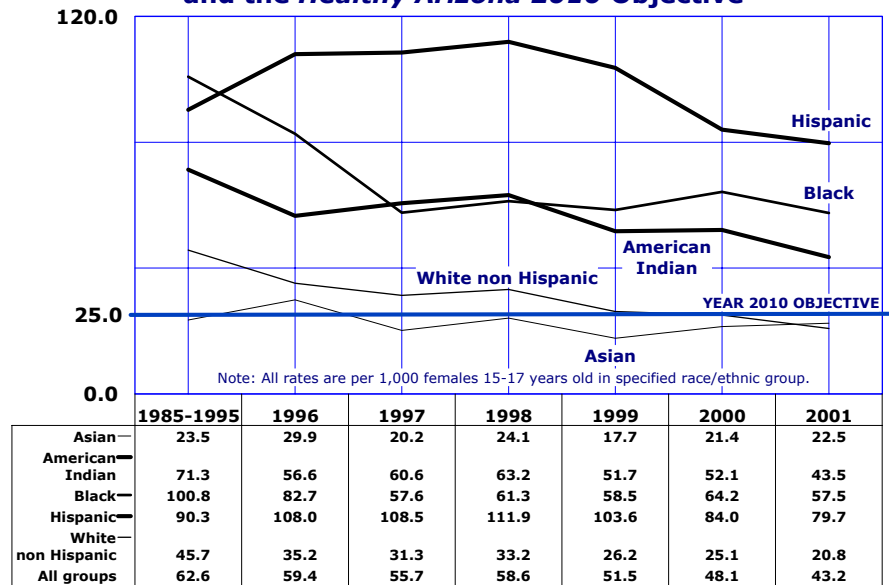
Figure 11
Sources of Payment for Labor and Delivery Among Mothers 15-19 Years Old, Arizona, 2001



Note: the Arizona State Health Care Cost Containment System (AHCCCS) is the State's Medicaid program. IHS is the Indian Health Service. Self-pay includes unknown source of payment.

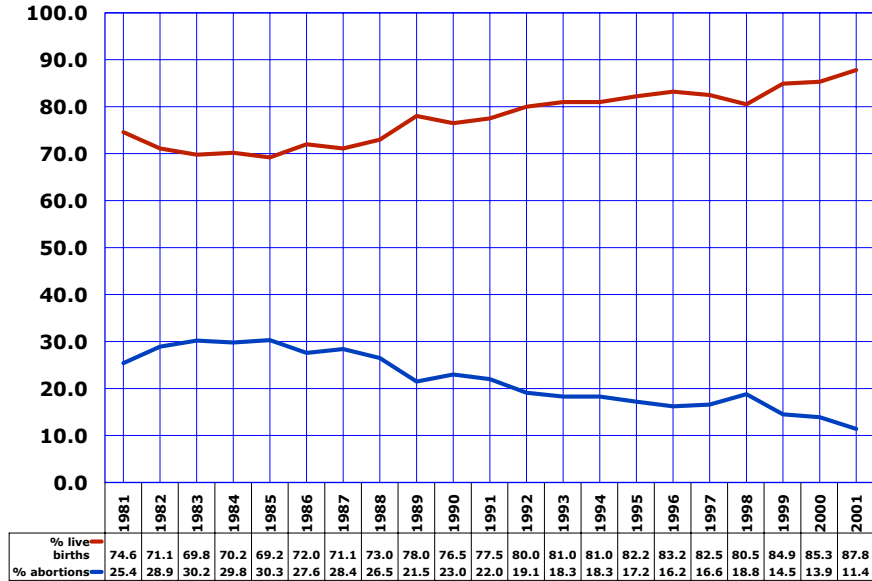
In 2001, the pregnancy rate of 43.2 per 1,000 adolescent girls 15-17 years old in Arizona was 72.8 percent greater than the **Healthy Arizona 2010** objective of 25.0/1,000 (**Figure 12**). The 2001 pregnancy rate among Asian females ages 15-17 years was 10 percent lower, and among White non-Hispanic females 16.8 percent lower than the objective. In contrast the 2001 pregnancy rate among Hispanic females 15-17 years old exceeded the target rate by 218.8 percent, or 3.2 times.

Figure 12
Pregnancy Rates by Race/Ethnicity Among Females 15-17 Years Old: 1985-1995, 1996-2001 and the **Healthy Arizona 2010** Objective



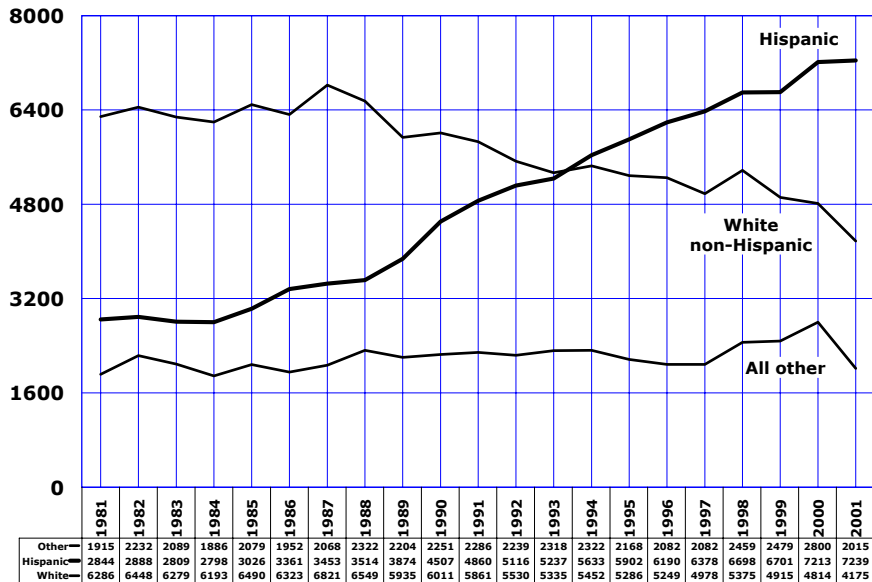
KEY FINDINGS

Figure 13
Percent Pregnancies Ending in Abortions or Live Births
by Year Among Females 19 Years and Younger,
Arizona, 1981-2001



The percent of teen pregnancies ending in abortions declined steeply from 30.3 in 1985 to 11.4 in 2001 (Figure 13). The percent of teen pregnancies ending in live births increased during that time from 69.2 percent to 87.8 percent. However, it is important to note that compared to live births, abortions are more likely to be underreported. The number of abortions actually performed is probably greater than the number of abortions reported to the health department.

Figure 14
Number of Pregnancies by Race/Ethnicity and Year
Among Females 19 Years and Younger,
Arizona, 1981-2001



The number of pregnancies among Hispanic teens was 4,395 greater in 2001 than it was in 1981, while the combined number of pregnancies among White non-Hispanic, Black, American Indian and Asian females was 2,011 lower than in 1981. In 2001, Hispanics accounted for 53.7 percent of all pregnancies to females aged 19 years and younger, compared to 25.7 percent in 1981 (Figure 14). In contrast, White non-Hispanics who accounted for the absolute majority (56.9 percent) of all teen pregnancies in 1981, accounted for less than one-third (31.1 percent) of total teen pregnancies in 2001.

**TABLE 1
PREGNANCIES AND PREGNANCY OUTCOMES BY AGE GROUP AND YEAR,
FEMALES 19 OR LESS YEARS OLD, ARIZONA, 1991 – 2001**

| Pregnancy Outcome by Year | Total, Females 19 Years or Younger | Under 15 Years | 15-19 Years Old | | |
|---------------------------|------------------------------------|----------------|-----------------|-------------|-------------|
| | | | Total | 15-17 Years | 18-19 Years |
| ALL PREGNANCIES | | | | | |
| 1991 | 13,037 | 268 | 12,769 | 4,714 | 8,055 |
| 1992 | 12,885 | 274 | 12,611 | 4,762 | 7,849 |
| 1993 | 12,890 | 256 | 12,634 | 4,803 | 7,831 |
| 1994 | 13,407 | 333 | 13,074 | 5,092 | 7,982 |
| 1995 | 13,356 | 314 | 13,042 | 5,092 | 7,950 |
| 1996 | 13,521 | 293 | 13,228 | 5,262 | 7,966 |
| 1997 | 13,438 | 278 | 13,160 | 5,096 | 8,064 |
| 1998 | 14,531 | 316 | 14,216 | 5,482 | 8,734 |
| 1999 | 14,095 | 303 | 13,792 | 4,993 | 8,799 |
| 2000 | 14,287 | 278 | 14,009 | 5,016 | 8,993 |
| 2001 | 13,429 | 253 | 13,170 | 4,661 | 8,515 |
| LIVE BIRTHS | | | | | |
| 1991 | 10,108 | 193 | 9,915 | 3,726 | 6,189 |
| 1992 | 10,307 | 188 | 10,119 | 3,838 | 6,281 |
| 1993 | 10,438 | 187 | 10,251 | 3,870 | 6,381 |
| 1994 | 10,858 | 246 | 10,612 | 4,132 | 6,480 |
| 1995 | 10,973 | 229 | 10,744 | 4,178 | 6,566 |
| 1996 | 11,247 | 216 | 11,031 | 4,340 | 6,691 |
| 1997 | 11,085 | 214 | 10,871 | 4,219 | 6,652 |
| 1998 | 11,695 | 234 | 11,461 | 4,397 | 7,064 |
| 1999 | 11,963 | 238 | 11,725 | 4,236 | 7,489 |
| 2000 | 12,189 | 216 | 11,973 | 4,284 | 7,689 |
| 2001 | 11,790 | 198 | 11,592 | 4,080 | 7,512 |
| ABORTIONS | | | | | |
| 1991 | 2,862 | 73 | 2,789 | 955 | 1,834 |
| 1992 | 2,467 | 84 | 2,383 | 885 | 1,498 |
| 1993 | 2,357 | 68 | 2,289 | 892 | 1,397 |
| 1994 | 2,458 | 82 | 2,376 | 916 | 1,460 |
| 1995 | 2,294 | 82 | 2,212 | 880 | 1,332 |
| 1996 | 2,186 | 72 | 2,114 | 892 | 1,222 |
| 1997 | 2,233 | 56 | 2,177 | 826 | 1,351 |
| 1998 | 2,735 | 78 | 2,657 | 1,046 | 1,611 |
| 1999 | 2,046 | 60 | 1,986 | 727 | 1,259 |
| 2000 | 1,988 | 57 | 1,931 | 684 | 1,247 |
| 2001 | 1,528 | 46 | 1,482 | 540 | 942 |
| FETAL LOSSES | | | | | |
| 1991 | 67 | 2 | 65 | 33 | 32 |
| 1992 | 111 | 2 | 109 | 39 | 70 |
| 1993 | 95 | 1 | 94 | 41 | 53 |
| 1994 | 91 | 5 | 86 | 44 | 42 |
| 1995 | 89 | 3 | 86 | 34 | 52 |
| 1996 | 88 | 5 | 83 | 30 | 53 |
| 1997 | 120 | 8 | 112 | 51 | 61 |
| 1998 | 102 | 4 | 98 | 39 | 59 |
| 1999 | 85 | 5 | 80 | 29 | 51 |
| 2000 | 110 | 5 | 105 | 48 | 57 |
| 2001 | 111 | 9 | 102 | 41 | 61 |

TABLE 2
PREGNANCY RATES¹ BY PREGNANCY OUTCOME, AGE GROUP AND YEAR,
FEMALES 19 OR LESS YEARS OLD, ARIZONA, 1991 - 2001

| Pregnancy Outcome by Year | Total, Females 19 Years or Younger | Under 15 Years | 15-19 Years Old | | |
|---------------------------|------------------------------------|----------------|-----------------|-------------|-------------|
| | | | Total | 15-17 Years | 18-19 Years |
| ALL PREGNANCIES | | | | | |
| 1991 | 50.2 | 2.1 | 98.2 | 63.8 | 143.4 |
| 1992 | 48.4 | 2.1 | 94.6 | 62.9 | 142.6 |
| 1993 | 48.6 | 1.8 | 101.2 | 63.6 | 142.8 |
| 1994 | 49.3 | 2.3 | 102.0 | 65.4 | 145.9 |
| 1995 | 47.4 | 2.2 | 96.1 | 61.1 | 141.8 |
| 1996 | 45.4 | 1.9 | 91.3 | 59.4 | 141.6 |
| 1997 | 43.8 | 1.8 | 88.1 | 55.7 | 139.3 |
| 1998 | 45.8 | 2.0 | 91.7 | 58.6 | 142.1 |
| 1999 | 42.7 | 1.8 | 85.7 | 51.5 | 137.6 |
| 2000 | 39.5 | 1.5 | 79.1 | 48.1 | 123.6 |
| 2001 | 36.0 | 1.3 | 72.0 | 43.2 | 112.2 |
| LIVE BIRTHS | | | | | |
| 1991 | 38.9 | 1.5 | 77.7 | 50.4 | 110.2 |
| 1992 | 38.7 | 1.4 | 75.9 | 50.7 | 114.1 |
| 1993 | 39.4 | 1.3 | 82.1 | 51.2 | 116.4 |
| 1994 | 39.9 | 1.7 | 82.8 | 53.0 | 118.5 |
| 1995 | 38.9 | 1.6 | 79.1 | 50.1 | 117.1 |
| 1996 | 37.8 | 1.4 | 76.1 | 49.0 | 119.0 |
| 1997 | 36.1 | 1.4 | 72.8 | 46.1 | 114.9 |
| 1998 | 36.9 | 1.4 | 73.9 | 47.0 | 114.9 |
| 1999 | 36.2 | 1.4 | 72.9 | 43.7 | 117.1 |
| 2000 | 33.7 | 1.2 | 67.6 | 41.1 | 105.7 |
| 2001 | 31.6 | 1.0 | 63.3 | 37.8 | 99.9 |
| ABORTIONS | | | | | |
| 1991 | 11.0 | 0.6 | 21.4 | 12.9 | 32.6 |
| 1992 | 9.3 | 0.6 | 17.9 | 11.7 | 27.2 |
| 1993 | 8.9 | 0.5 | 18.3 | 11.8 | 25.5 |
| 1994 | 9.0 | 0.6 | 18.5 | 11.8 | 26.7 |
| 1995 | 8.1 | 0.6 | 16.3 | 10.6 | 23.8 |
| 1996 | 7.4 | 0.5 | 14.6 | 10.1 | 21.7 |
| 1997 | 7.3 | 0.4 | 14.6 | 9.0 | 23.3 |
| 1998 | 8.6 | 0.5 | 17.1 | 11.2 | 26.2 |
| 1999 | 6.1 | 0.3 | 12.3 | 7.5 | 19.7 |
| 2000 | 5.5 | 0.3 | 10.9 | 6.6 | 17.1 |
| 2001 | 4.1 | 0.2 | 8.1 | 5.0 | 12.5 |
| FETAL LOSSES | | | | | |
| 1991 | 0.3 | 0.0 | 0.5 | 0.4 | 0.6 |
| 1992 | 0.4 | 0.0 | 0.8 | 0.5 | 1.3 |
| 1993 | 0.4 | 0.0 | 0.8 | 0.5 | 1.0 |
| 1994 | 0.3 | 0.0 | 0.7 | 0.6 | 0.8 |
| 1995 | 0.3 | 0.0 | 0.6 | 0.4 | 0.9 |
| 1996 | 0.3 | 0.0 | 0.6 | 0.3 | 0.9 |
| 1997 | 0.4 | 0.0 | 0.7 | 0.6 | 1.0 |
| 1998 | 0.3 | 0.0 | 0.6 | 0.4 | 1.0 |
| 1999 | 0.3 | 0.0 | 0.5 | 0.3 | 0.8 |
| 2000 | 0.3 | 0.0 | 0.6 | 0.5 | 0.8 |
| 2001 | 0.3 | 0.0 | 0.6 | 0.4 | 0.8 |

¹ The number of pregnancies (live births+abortions+fetal deaths) per 1,000 females in specified age group.
0.0: Quantity more than zero but less than 0.05.

**TABLE 3
LIVE BIRTHS TO FEMALES 19 OR LESS YEARS OLD BY AGE GROUP,
ETHNIC GROUP AND YEAR, ARIZONA, 1991 - 2001**

| Ethnic Group and Year | Total, Females 19 Years or Younger | Under 15 Years | 15-19 Years Old | | |
|---------------------------|---|-------------------|-----------------|-------------|-------------|
| | | | Total | 15-17 Years | 18-19 Years |
| WHITE NON HISPANIC | | | | | |
| 1991 | 4,061 | 46 | 4,015 | 1,292 | 2,723 |
| 1992 | 4,060 | 43 | 4,017 | 1,351 | 2,666 |
| 1993 | 4,024 | 51 | 3,973 | 1,343 | 2,630 |
| 1994 | 4,023 | 61 | 3,962 | 1,392 | 2,570 |
| 1995 | 4,042 | 51 | 3,991 | 1,338 | 2,653 |
| 1996 | 4,033 | 40 | 3,993 | 1,368 | 2,625 |
| 1997 | 3,733 | 27 | 3,706 | 1,239 | 2,467 |
| 1998 | 3,843 | 38 | 3,805 | 1,261 | 2,544 |
| 1999 | 3,869 | 31 | 3,838 | 1,115 | 2,723 |
| 2000 | 3,759 | 38 | 3,721 | 1,040 | 2,681 |
| 2001 | 3,396 | 34 | 3,362 | 926 | 2,436 |
| HISPANIC | | | | | |
| 1991 | 4,255 | 104 | 4,151 | 1,705 | 2,446 |
| 1992 | 4,543 | 103 | 4,440 | 1,840 | 2,600 |
| 1993 | 4,688 | 102 | 4,586 | 1,837 | 2,749 |
| 1994 | 5,075 | 138 | 4,937 | 2,066 | 2,871 |
| 1995 | 5,351 | 133 | 5,218 | 2,241 | 2,977 |
| 1996 | 5,628 | 132 | 5,496 | 2,308 | 3,188 |
| 1997 | 5,736 | 146 | 5,590 | 2,329 | 3,261 |
| 1998 | 5,951 | 142 | 5,809 | 2,419 | 3,390 |
| 1999 | 6,161 | 149 | 6,012 | 2,415 | 3,597 |
| 2000 | 6,548 | 144 | 6,404 | 2,567 | 3,837 |
| 2001 | 6,648 | 132 | 6,516 | 2,552 | 3,964 |
| BLACK | | | | | |
| 1991 | 620 | 19 | 601 | 254 | 347 |
| 1992 | 570 | 12 | 558 | 237 | 321 |
| 1993 | 581 | 12 | 569 | 241 | 328 |
| 1994 | 576 | 14 | 562 | 223 | 339 |
| 1995 | 491 | 17 | 474 | 185 | 289 |
| 1996 | 498 | 10 | 488 | 220 | 268 |
| 1997 | 519 | 13 | 506 | 207 | 299 |
| 1998 | 586 | 16 | 570 | 223 | 347 |
| 1999 | 603 | 14 | 589 | 222 | 367 |
| 2000 | 572 | 12 | 560 | 198 | 362 |
| 2001 | 545 | 13 | 532 | 193 | 339 |
| AMERICAN INDIAN | | | | | |
| 1991 | 1,102 | 24 | 1,078 | 448 | 630 |
| 1992 | 1,080 | 30 | 1,050 | 394 | 656 |
| 1993 | 1,060 | 20 | 1,040 | 419 | 621 |
| 1994 | 1,095 | 32 | 1,063 | 421 | 642 |
| 1995 | 991 | 25 | 966 | 387 | 579 |
| 1996 | 996 | 28 | 968 | 401 | 567 |
| 1997 | 971 | 25 | 946 | 407 | 539 |
| 1998 | 1,122 | 31 | 1,091 | 429 | 662 |
| 1999 | 1,050 | 38 | 1,012 | 389 | 623 |
| 2000 | 1,089 | 20 | 1,069 | 405 | 664 |
| 2001 | 1,013 | 17 | 996 | 348 | 648 |

Note: see Table 1 for the number of births for all ethnic groups.

**TABLE 4
ABORTIONS TO FEMALES 19 OR LESS YEARS OLD BY AGE GROUP,
ETHNIC GROUP AND YEAR, ARIZONA, 1991 - 2001**

| Ethnic Group and Year | Total, Females 19 Years or Younger | Under 15 Years | 15-19 Years Old | | |
|---------------------------|---|-------------------|-----------------|-------------|-------------|
| | | | Total | 15-17 Years | 18-19 Years |
| WHITE NON HISPANIC | | | | | |
| 1991 | 1,800 | 38 | 1,762 | 620 | 1,142 |
| 1992 | 1,470 | 37 | 1,433 | 523 | 910 |
| 1993 | 1,311 | 29 | 1,282 | 504 | 778 |
| 1994 | 1,429 | 41 | 1,388 | 552 | 836 |
| 1995 | 1,244 | 33 | 1,211 | 481 | 730 |
| 1996 | 1,148 | 27 | 1,121 | 478 | 643 |
| 1997 | 1,179 | 29 | 1,150 | 433 | 717 |
| 1998 | 1,480 | 38 | 1,442 | 563 | 879 |
| 1999 | 981 | 26 | 955 | 369 | 586 |
| 2000 | 1,020 | 25 | 995 | 342 | 653 |
| 2001 | 746 | 16 | 730 | 262 | 458 |
| HISPANIC | | | | | |
| 1991 | 605 | 21 | 584 | 199 | 385 |
| 1992 | 573 | 39 | 534 | 202 | 332 |
| 1993 | 549 | 21 | 528 | 198 | 330 |
| 1994 | 558 | 21 | 537 | 200 | 337 |
| 1995 | 551 | 30 | 521 | 204 | 317 |
| 1996 | 562 | 23 | 539 | 218 | 321 |
| 1997 | 642 | 21 | 621 | 240 | 381 |
| 1998 | 747 | 29 | 718 | 292 | 426 |
| 1999 | 540 | 16 | 524 | 183 | 341 |
| 2000 | 610 | 22 | 588 | 228 | 360 |
| 2001 | 534 | 22 | 512 | 199 | 313 |
| BLACK | | | | | |
| 1991 | 148 | 5 | 143 | 50 | 93 |
| 1992 | 160 | 4 | 156 | 60 | 96 |
| 1993 | 147 | 4 | 143 | 49 | 94 |
| 1994 | 137 | 7 | 130 | 42 | 88 |
| 1995 | 99 | 4 | 95 | 34 | 61 |
| 1996 | 105 | 6 | 99 | 44 | 55 |
| 1997 | 107 | 0 | 107 | 40 | 67 |
| 1998 | 147 | 4 | 143 | 51 | 92 |
| 1999 | 96 | 7 | 89 | 27 | 62 |
| 2000 | 115 | 5 | 110 | 42 | 68 |
| 2001 | 71 | 3 | 68 | 28 | 40 |
| AMERICAN INDIAN | | | | | |
| 1991 | 49 | 3 | 46 | 13 | 33 |
| 1992 | 58 | 2 | 56 | 19 | 37 |
| 1993 | 61 | 3 | 58 | 18 | 40 |
| 1994 | 55 | 2 | 53 | 15 | 38 |
| 1995 | 66 | 3 | 63 | 24 | 39 |
| 1996 | 54 | 4 | 40 | 18 | 32 |
| 1997 | 58 | 2 | 56 | 17 | 39 |
| 1998 | 53 | 0 | 53 | 22 | 31 |
| 1999 | 56 | 3 | 53 | 17 | 36 |
| 2000 | 43 | 2 | 41 | 13 | 28 |
| 2001 | 29 | 3 | 26 | 7 | 19 |

Note: see Table 1 for the number of abortions for all ethnic groups.

TABLE 5
NUMBER OF PREGNANCIES¹ BY PREGNANCY OUTCOME, ETHNIC GROUP AND YEAR
AMONG FEMALES AGED 17 AND YOUNGER WITH RATES², ARIZONA, 1991-2001

| Ethnicity/Pregnancy Outcome | 1991 | 1992 | 1993 | 1994 | 1995 | 1996 | 1997 | 1998 | 1999 | 2000 | 2001 | 2001 Rates |
|--|-------------|-------------|-------------|-------------|-------------|-------------|-------------|-------------|-------------|-------------|-------------|-------------|
| WHITE , ³ total: | 1,996 | 1,954 | 1,927 | 2,046 | 1,903 | 1,937 | 1,760 | 1,918 | 1,566 | 1,462 | 1,250 | 8.0 |
| Births | 1,338 | 1,394 | 1,394 | 1,453 | 1,389 | 1,408 | 1,266 | 1,299 | 1,146 | 1,078 | 960 | 6.1 |
| Abortions | 658 | 560 | 533 | 593 | 514 | 505 | 462 | 601 | 395 | 367 | 278 | 1.8 |
| HISPANIC , total: | 2,029 | 2,184 | 2,185 | 2,425 | 2,608 | 2,681 | 2,736 | 2,882 | 2,763 | 2,991 | 2,930 | 29.9 |
| Births | 1,809 | 1,943 | 1,939 | 2,204 | 2,374 | 2,440 | 2,475 | 2,561 | 2,564 | 2,711 | 2,684 | 27.4 |
| Abortions | 220 | 241 | 219 | 221 | 234 | 241 | 261 | 321 | 199 | 250 | 221 | 2.3 |
| BLACK , total: | 328 | 313 | 306 | 286 | 240 | 289 | 242 | 263 | 275 | 227 | 240 | 21.5 |
| Births | 273 | 249 | 253 | 237 | 202 | 230 | 220 | 239 | 236 | 210 | 206 | 18.4 |
| Abortions | 55 | 64 | 53 | 49 | 38 | 50 | 40 | 55 | 34 | 47 | 31 | 2.8 |
| AMERICAN INDIAN , total: | 488 | 446 | 460 | 470 | 439 | 453 | 489 | 530 | 450 | 476 | 384 | 16.2 |
| Births | 472 | 424 | 439 | 453 | 412 | 429 | 432 | 460 | 427 | 425 | 365 | 15.4 |
| Abortions | 16 | 22 | 21 | 17 | 27 | 22 | 19 | 22 | 20 | 15 | 10 | 0.4 |
| ALL ETHNIC GROUPS , ⁴ total: | 4,982 | 5,036 | 5,059 | 5,425 | 5,406 | 5,555 | 5,374 | 5,798 | 5,296 | 5,294 | 4,914 | 16.5 |
| Births | 3,919 | 4,026 | 4,057 | 4,378 | 4,407 | 4,556 | 4,433 | 4,631 | 4,474 | 4,500 | 4,278 | 14.3 |
| Abortions | 1,028 | 969 | 960 | 998 | 962 | 964 | 882 | 1,124 | 787 | 741 | 586 | 2.0 |
| PREGNANCY RATE, total: | 24.5 | 24.1 | 23.5 | 24.2 | 23.6 | 23.1 | 22.0 | 22.7 | 19.9 | 18.4 | 16.5 | |
| Fertility rate ⁵ | 19.3 | 19.3 | 18.8 | 19.7 | 19.2 | 18.9 | 18.2 | 18.1 | 16.8 | 15.6 | 14.3 | |
| Abortion rate | 5.1 | 4.6 | 4.5 | 4.5 | 4.2 | 4.0 | 3.5 | 4.4 | 3.0 | 2.6 | 2.0 | |

¹ Fetal deaths are included in the total counts of pregnancies.

² All rates per 1,000 females 10-17 years old.

³ Not of Hispanic origin.

⁴ Includes other and unspecified ethnicity.

⁵ Number of births per 1,000 females 10-17 years old.

TABLE 6
NUMBER OF PREGNANCIES¹ BY PREGNANCY OUTCOME, ETHNIC GROUP AND YEAR
AMONG FEMALES 15-17 YEARS OLD WITH RATES², ARIZONA, 1991-2001

| Ethnicity/Pregnancy Outcome | 1991 | 1992 | 1993 | 1994 | 1995 | 1996 | 1997 | 1998 | 1999 | 2000 | 2001 | 2001 Rates |
|--|-------------|-------------|-------------|-------------|-------------|-------------|-------------|-------------|-------------|-------------|-------------|-------------|
| WHITE , ³ total: | | | | | | | | | | | | |
| Births | 1,912 | 1,874 | 1,847 | 1,944 | 1,819 | 1,867 | 1,699 | 1,841 | 1,505 | 1,397 | 1,197 | 20.8 |
| Abortions | 1,292 | 1,351 | 1,343 | 1,392 | 1,338 | 1,368 | 1,239 | 1,261 | 1,115 | 1,040 | 926 | 16.1 |
| | 620 | 523 | 504 | 552 | 481 | 478 | 433 | 563 | 369 | 342 | 262 | 4.5 |
| HISPANIC , total: | | | | | | | | | | | | |
| Births | 1,904 | 2,042 | 2,035 | 2,266 | 2,445 | 2,526 | 2,569 | 2,711 | 2,598 | 2,823 | 2,771 | 79.7 |
| Abortions | 1,705 | 1,840 | 1,837 | 2,066 | 2,241 | 2,308 | 2,329 | 2,419 | 2,415 | 2,567 | 2,552 | 73.4 |
| | 199 | 202 | 198 | 200 | 204 | 218 | 240 | 292 | 183 | 228 | 199 | 5.7 |
| BLACK , total: | | | | | | | | | | | | |
| Births | 304 | 297 | 290 | 265 | 219 | 271 | 250 | 276 | 254 | 242 | 224 | 57.5 |
| Abortions | 254 | 237 | 241 | 223 | 185 | 220 | 207 | 223 | 222 | 198 | 193 | 49.5 |
| | 50 | 60 | 49 | 42 | 34 | 44 | 40 | 51 | 27 | 42 | 28 | 7.2 |
| AMERICAN INDIAN , total: | | | | | | | | | | | | |
| Births | 461 | 413 | 437 | 436 | 411 | 421 | 439 | 464 | 408 | 421 | 363 | 43.5 |
| Abortions | 448 | 394 | 419 | 421 | 387 | 401 | 407 | 429 | 389 | 405 | 348 | 41.7 |
| | 13 | 19 | 18 | 15 | 24 | 18 | 17 | 22 | 17 | 13 | 7 | 0.8 |
| ALL ETHNIC GROUPS , ⁴ total: | | | | | | | | | | | | |
| Births | 4,714 | 4,762 | 4,803 | 5,092 | 5,092 | 5,262 | 5,096 | 5,482 | 4,993 | 5,016 | 4,661 | 43.2 |
| Abortions | 3,726 | 3,838 | 3,870 | 4,132 | 4,178 | 4,340 | 4,219 | 4,397 | 4,236 | 4,284 | 4,080 | 37.8 |
| | 955 | 885 | 892 | 916 | 880 | 892 | 826 | 1,046 | 727 | 684 | 540 | 5.0 |
| PREGNANCY RATE, total: | 63.8 | 62.9 | 63.6 | 65.4 | 61.1 | 59.4 | 55.7 | 58.6 | 51.5 | 48.1 | 43.2 | |
| Fertility rate⁵ | 50.4 | 50.7 | 51.2 | 53.0 | 50.1 | 49.0 | 46.1 | 47.0 | 43.7 | 41.1 | 37.8 | |
| Abortion rate | 12.9 | 11.7 | 11.8 | 11.8 | 10.6 | 10.1 | 9.0 | 11.2 | 7.5 | 6.6 | 5.0 | |

¹ Fetal deaths are included in the total counts of pregnancies.

² All rates per 1,000 females 15-17 years old.

³ Not of Hispanic origin.

⁴ Includes other and unspecified ethnicity.

⁵ Number of births per 1,000 females 15-17 years old.

TABLE 7
NUMBER OF PREGNANCIES¹ BY PREGNANCY OUTCOME, ETHNIC GROUP AND
YEAR AMONG FEMALES 18-19 YEARS OLD WITH RATES², ARIZONA, 1991-2001

| Ethnicity/Pregnancy Outcome | 1991 | 1992 | 1993 | 1994 | 1995 | 1996 | 1997 | 1998 | 1999 | 2000 | 2001 | 2001 Rates |
|--|--------------|--------------|--------------|--------------|--------------|--------------|--------------|--------------|--------------|--------------|--------------|--------------|
| WHITE³ total: | | | | | | | | | | | | |
| Births | 3,865 | 3,576 | 3,408 | 3,406 | 3,383 | 3,312 | 3,218 | 3,457 | 3,349 | 3,352 | 2,925 | 71.7 |
| Abortions | 2,723 | 2,666 | 2,630 | 2,570 | 2,653 | 2,625 | 2,467 | 2,544 | 2,723 | 2,681 | 2,436 | 59.7 |
| | 1,142 | 910 | 778 | 836 | 730 | 643 | 717 | 879 | 586 | 653 | 468 | 11.5 |
| HISPANIC, total: | | | | | | | | | | | | |
| Births | 2,831 | 2,932 | 3,079 | 3,208 | 3,234 | 3,509 | 3,642 | 3,816 | 3,938 | 4,222 | 4,309 | 176.0 |
| Abortions | 2,446 | 2,600 | 2,749 | 2,871 | 2,977 | 3,188 | 3,261 | 3,390 | 3,597 | 3,837 | 3,964 | 161.9 |
| | 385 | 332 | 330 | 337 | 317 | 321 | 381 | 426 | 341 | 360 | 313 | 12.8 |
| BLACK, total: | | | | | | | | | | | | |
| Births | 440 | 417 | 422 | 427 | 350 | 328 | 368 | 442 | 434 | 433 | 382 | 146.4 |
| Abortions | 347 | 321 | 328 | 339 | 289 | 268 | 299 | 347 | 367 | 362 | 339 | 129.9 |
| | 93 | 96 | 94 | 88 | 61 | 55 | 67 | 92 | 62 | 68 | 40 | 15.3 |
| AMERICAN INDIAN, total: | | | | | | | | | | | | |
| Births | 663 | 693 | 661 | 680 | 618 | 603 | 600 | 710 | 665 | 700 | 669 | 133.4 |
| Abortions | 630 | 656 | 621 | 642 | 579 | 567 | 539 | 662 | 623 | 664 | 648 | 129.2 |
| | 33 | 37 | 40 | 38 | 39 | 32 | 39 | 31 | 36 | 28 | 19 | 3.8 |
| ALL ETHNIC GROUPS,⁴ total: | | | | | | | | | | | | |
| Births | 8,055 | 7,849 | 7,831 | 7,982 | 7,950 | 7,966 | 8,064 | 8,734 | 8,799 | 8,993 | 8,515 | 113.2 |
| Abortions | 6,189 | 6,281 | 6,381 | 6,480 | 6,566 | 6,691 | 6,652 | 7,064 | 7,489 | 7,689 | 7,512 | 99.9 |
| | 1,834 | 1,498 | 1,397 | 1,460 | 1,332 | 1,222 | 1,351 | 1,611 | 1,259 | 1,247 | 942 | 12.5 |
| PREGNANCY RATE, total: | 143.4 | 142.6 | 142.8 | 145.9 | 141.8 | 141.6 | 139.3 | 142.1 | 137.6 | 123.6 | 113.2 | |
| Fertility rate⁵ | 110.2 | 114.1 | 116.4 | 118.5 | 117.1 | 119.0 | 114.9 | 114.9 | 117.1 | 105.7 | 99.9 | |
| Abortion rate | 32.6 | 27.2 | 25.5 | 26.7 | 23.8 | 21.7 | 23.3 | 26.2 | 19.7 | 17.1 | 12.5 | |

¹ Fetal deaths are included in the total count of pregnancies.

² All rates per 1,000 females 18-19 years old.

³ Not of Hispanic origin.

⁴ Includes other and unspecified ethnicity.

⁵ Number of births per 1,000 females 18-19 years old.

TABLE 8
NUMBER OF PREGNANCIES¹ BY PREGNANCY OUTCOME, ETHNIC GROUP AND YEAR
AMONG FEMALES 19 OR LESS YEARS OLD, WITH RATES², ARIZONA, 1991-2001

| Ethnicity/Pregnancy Outcome | 1991 | 1992 | 1993 | 1994 | 1995 | 1996 | 1997 | 1998 | 1999 | 2000 | 2001 | 2001 Rates |
|--|-------------|-------------|-------------|-------------|-------------|-------------|-------------|-------------|-------------|-------------|-------------|-------------|
| WHITE , ³ total: | | | | | | | | | | | | |
| Births | 5,861 | 5,530 | 5,335 | 5,452 | 5,286 | 5,249 | 4,978 | 5,375 | 4,915 | 4,814 | 4,175 | 21.1 |
| Abortions | 4,061 | 4,060 | 4,024 | 4,023 | 4,042 | 4,033 | 3,733 | 3,843 | 3,869 | 3,759 | 3,396 | 17.2 |
| | 1,800 | 1,470 | 1,311 | 1,429 | 1,244 | 1,148 | 1,179 | 1,480 | 981 | 1,020 | 746 | 3.8 |
| HISPANIC , total: | | | | | | | | | | | | |
| Births | 4,860 | 5,116 | 5,237 | 5,633 | 5,902 | 6,190 | 6,378 | 6,698 | 6,701 | 7,213 | 7,239 | 59.1 |
| Abortions | 4,255 | 4,543 | 4,688 | 5,075 | 5,351 | 5,628 | 5,736 | 5,951 | 6,161 | 6,548 | 6,648 | 54.2 |
| | 605 | 573 | 549 | 558 | 551 | 562 | 642 | 747 | 540 | 610 | 534 | 4.4 |
| BLACK , total: | | | | | | | | | | | | |
| Births | 768 | 730 | 728 | 713 | 590 | 617 | 582 | 644 | 669 | 620 | 622 | 45.1 |
| Abortions | 620 | 570 | 581 | 576 | 491 | 498 | 519 | 586 | 603 | 572 | 545 | 39.5 |
| | 148 | 160 | 147 | 137 | 99 | 105 | 107 | 147 | 96 | 115 | 71 | 5.1 |
| AMERICAN INDIAN , total: | | | | | | | | | | | | |
| Births | 1,151 | 1,138 | 1,121 | 1,150 | 1,057 | 1,056 | 1,117 | 1,301 | 1,155 | 1,216 | 1,053 | 36.7 |
| Abortions | 1,102 | 1,080 | 1,060 | 1,095 | 991 | 996 | 971 | 1,122 | 1,050 | 1,089 | 1,013 | 35.3 |
| | 49 | 58 | 61 | 55 | 66 | 54 | 58 | 53 | 56 | 43 | 29 | 1.0 |
| ALL ETHNIC GROUPS , ⁴ total: | | | | | | | | | | | | |
| Births | 13,037 | 12,885 | 12,890 | 13,407 | 13,356 | 13,521 | 13,438 | 14,532 | 14,095 | 14,287 | 13,429 | 36.0 |
| Abortions | 10,108 | 10,307 | 10,438 | 10,858 | 10,973 | 11,247 | 11,085 | 11,695 | 11,963 | 12,189 | 11,790 | 31.6 |
| | 2,862 | 2,476 | 2,357 | 2,458 | 2,294 | 2,186 | 2,233 | 2,735 | 2,046 | 1,988 | 1,528 | 4.1 |
| PREGNANCY RATE , total: | 50.2 | 48.4 | 48.6 | 49.3 | 47.4 | 45.4 | 43.8 | 45.8 | 42.7 | 39.5 | 36.0 | |
| Fertility rate ⁵ | 38.9 | 38.7 | 39.4 | 39.9 | 38.9 | 37.8 | 36.1 | 36.9 | 36.2 | 33.7 | 31.6 | |
| Abortion rate | 11.0 | 9.3 | 8.9 | 9.4 | 8.1 | 7.4 | 7.3 | 8.6 | 6.2 | 5.5 | 4.1 | |

¹ Fetal deaths are included in the total counts of pregnancies.

² All rates per 1,000 females 19 or less years old.

³ Not of Hispanic origin.

⁴ Includes other and unspecified ethnicity.

⁵ Number of births per 1,000 females 19 or less years old.

**TABLE 9
TRENDS IN PREGNANCY RATES* BY COUNTY OF RESIDENCE AMONG FEMALES 10-17 AND 18-19 YEARS OLD,
ARIZONA, 1991-2001**

| | ARIZONA | APACHE | COCHISE | COCONINO | GILA | GRAHAM | GREENLEE | LA PAZ | MARICOPA | MOHAVE | NAVAJO | PIMA | PINAL | SANTA CRUZ | YAVAPAI | YUMA | |
|----------------------------|-------------|--------|---------|----------|-------|--------|----------|--------|----------|--------|--------|-------|-------|------------|---------|-------|-------|
| 19 YEARS OR YOUNGER | 1991 | 50.2 | 42.3 | 41.7 | 30.5 | 44.0 | 45.0 | 46.6 | 43.1 | 54.4 | 45.8 | 45.1 | 45.5 | 62.7 | 49.3 | 38.5 | 47.8 |
| | 1992 | 48.4 | 37.4 | 40.6 | 29.3 | 55.1 | 31.1 | 27.5 | 40.7 | 52.4 | 43.2 | 43.9 | 42.3 | 59.8 | 48.8 | 37.4 | 50.4 |
| | 1993 | 48.6 | 39.0 | 44.8 | 43.3 | 50.3 | 37.3 | 41.1 | 37.4 | 50.4 | 48.3 | 43.4 | 46.4 | 58.2 | 48.5 | 35.3 | 55.0 |
| | 1994 | 49.3 | 37.2 | 39.7 | 38.9 | 48.6 | 34.3 | 35.4 | 44.2 | 51.7 | 46.2 | 41.0 | 49.2 | 58.4 | 46.7 | 35.1 | 54.5 |
| | 1995 | 47.4 | 31.7 | 42.9 | 39.6 | 40.5 | 28.9 | 51.8 | 45.2 | 48.9 | 45.2 | 42.1 | 45.5 | 50.8 | 44.6 | 37.0 | 54.0 |
| | 1996 | 45.4 | 29.6 | 37.5 | 39.7 | 42.4 | 40.1 | 53.6 | 29.8 | 47.1 | 44.2 | 37.0 | 44.3 | 47.9 | 42.3 | 34.9 | 50.1 |
| | 1997 | 43.8 | 30.4 | 39.8 | 31.7 | 45.0 | 41.3 | 46.1 | 44.1 | 44.6 | 42.6 | 37.4 | 43.1 | 46.8 | 43.1 | 32.4 | 48.6 |
| | 1998 | 45.8 | 30.2 | 36.2 | 28.0 | 45.4 | 36.3 | 43.3 | 39.2 | 46.9 | 40.1 | 41.9 | 43.1 | 49.4 | 48.3 | 37.0 | 46.6 |
| | 1999 | 42.7 | 23.9 | 35.6 | 30.2 | 41.4 | 29.3 | 34.9 | 29.2 | 44.6 | 40.1 | 40.4 | 38.8 | 44.9 | 41.7 | 33.7 | 46.3 |
| | 2000 | 39.5 | 29.2 | 38.7 | 28.6 | 41.1 | 28.8 | 26.7 | 32.6 | 40.7 | 33.5 | 34.8 | 39.6 | 47.7 | 39.3 | 33.0 | 42.0 |
| | 2001 | 36.0 | 21.6 | 34.3 | 30.3 | 43.2 | 33.8 | 18.3 | 36.8 | 37.2 | 31.4 | 26.7 | 36.0 | 43.7 | 33.0 | 26.3 | 36.7 |
| 18-19 YEARS OLD | 1991 | 143.4 | 160.9 | 147.2 | 59.1 | 176.3 | 133.2 | 138.4 | 155.7 | 172.5 | 178.7 | 116.2 | 187.6 | 161.1 | 128.8 | 152.0 | |
| | 1992 | 142.6 | 150.3 | 154.4 | 76.9 | 223.9 | 97.1 | 146.1 | 119.1 | 146.7 | 164.5 | 179.9 | 104.3 | 190.1 | 164.2 | 118.7 | 153.3 |
| | 1993 | 142.8 | 136.6 | 130.2 | 130.9 | 154.6 | 166.7 | 117.2 | 133.3 | 163.7 | 166.4 | 161.3 | 152.6 | 188.7 | 153.3 | 95.2 | 172.0 |
| | 1994 | 145.9 | 132.1 | 113.4 | 125.5 | 149.4 | 108.7 | 90.9 | 118.5 | 167.1 | 161.5 | 152.6 | 155.8 | 165.3 | 147.7 | 129.5 | 184.8 |
| | 1995 | 141.6 | 113.4 | 106.5 | 106.3 | 133.3 | 96.3 | 229.6 | 146.7 | 157.4 | 193.9 | 150.2 | 134.1 | 167.1 | 150.2 | 135.2 | 179.6 |
| | 1996 | 141.6 | 107.2 | 114.8 | 112.7 | 143.8 | 131.8 | 189.4 | 91.4 | 146.8 | 146.8 | 130.3 | 134.6 | 147.6 | 135.7 | 120.1 | 157.1 |
| | 1997 | 139.3 | 98.8 | 155.6 | 91.8 | 154.5 | 120.4 | 192.6 | 144.9 | 143.0 | 156.3 | 124.5 | 133.3 | 152.1 | 122.6 | 103.5 | 168.4 |
| | 1998 | 142.1 | 105.7 | 115.5 | 77.6 | 130.5 | 111.1 | 94.0 | 135.7 | 148.0 | 139.1 | 138.0 | 123.8 | 159.9 | 136.9 | 111.7 | 156.6 |
| | 1999 | 137.6 | 88.3 | 115.5 | 78.9 | 121.0 | 94.8 | 116.1 | 72.7 | 146.5 | 139.4 | 141.7 | 118.3 | 145.9 | 145.2 | 114.8 | 151.7 |
| | 2000 | 135.8 | 109.9 | 124.5 | 74.7 | 167.3 | 74.1 | 123.8 | 127.1 | 127.8 | 139.7 | 154.1 | 104.7 | 161.0 | 132.1 | 124.9 | 149.8 |
| | 2001 | 113.2 | 91.9 | 116.8 | 84.3 | 154.3 | 84.9 | 78.4 | 153.0 | 117.3 | 132.5 | 111.7 | 96.6 | 156.9 | 113.7 | 91.8 | 130.8 |
| 10-17 YEARS OLD | 1991 | 24.5 | 19.5 | 19.4 | 17.5 | 19.2 | 21.2 | 16.0 | 23.4 | 26.9 | 20.1 | 20.0 | 21.1 | 34.6 | 24.5 | 18.3 | 22.0 |
| | 1992 | 24.1 | 15.7 | 16.5 | 19.2 | 23.6 | 13.8 | 13.3 | 24.6 | 26.8 | 18.6 | 18.3 | 20.9 | 30.6 | 16.0 | 19.1 | 25.0 |
| | 1993 | 23.5 | 18.2 | 23.4 | 21.0 | 26.4 | 17.6 | 23.7 | 14.6 | 24.4 | 21.7 | 19.2 | 22.1 | 28.9 | 22.2 | 13.4 | 27.8 |
| | 1994 | 24.2 | 17.7 | 21.0 | 16.8 | 24.6 | 16.9 | 22.6 | 25.3 | 25.7 | 20.4 | 18.4 | 24.9 | 33.6 | 23.1 | 15.6 | 25.4 |
| | 1995 | 23.6 | 13.9 | 20.3 | 20.6 | 19.5 | 13.8 | 15.2 | 22.8 | 24.5 | 15.5 | 19.2 | 23.7 | 26.6 | 21.1 | 15.8 | 26.6 |
| | 1996 | 23.0 | 12.7 | 19.7 | 18.9 | 20.1 | 16.9 | 26.8 | 15.5 | 24.0 | 22.1 | 16.9 | 21.8 | 27.2 | 21.7 | 15.8 | 26.8 |
| | 1997 | 22.0 | 15.7 | 19.2 | 14.1 | 30.4 | 22.5 | 16.5 | 21.6 | 22.4 | 18.5 | 18.3 | 20.4 | 24.7 | 23.8 | 16.2 | 23.5 |
| | 1998 | 22.7 | 13.7 | 16.9 | 12.8 | 24.8 | 19.4 | 31.9 | 13.0 | 23.0 | 18.1 | 20.9 | 22.0 | 25.6 | 26.4 | 19.2 | 22.9 |
| | 1999 | 19.9 | 9.6 | 15.8 | 15.1 | 22.1 | 13.7 | 16.3 | 18.6 | 21.0 | 17.4 | 17.9 | 17.6 | 22.3 | 17.1 | 13.8 | 20.9 |
| | 2000 | 18.4 | 15.0 | 19.1 | 14.6 | 17.6 | 13.9 | 8.8 | 15.2 | 18.9 | 12.0 | 13.7 | 19.1 | 23.8 | 21.8 | 13.3 | 17.5 |
| | 2001 | 16.5 | 9.2 | 15.5 | 13.9 | 22.5 | 17.0 | 7.2 | 15.2 | 17.2 | 10.9 | 11.7 | 16.9 | 19.8 | 17.8 | 12.3 | 15.3 |

* Number of pregnancies per 1,000 females in specified group.

**TABLE 10-A
PREGNANCIES AND PREGNANCY RATES, FEMALES 19 OR LESS YEARS OLD
BY COUNTY OF RESIDENCE, ARIZONA, 2001**

| County of residence | NUMBER OF PREGNANCIES:* | | | | |
|----------------------|-------------------------|-------------|-------------|-------------|-------------|
| | All 19 years or younger | 10-14 years | 15-19 years | | |
| | | | Total | 15-17 years | 18-19 years |
| Apache | 157 | 1 | 156 | 56 | 100 |
| Cochise | 304 | 5 | 299 | 107 | 192 |
| Coconino | 304 | 5 | 299 | 102 | 197 |
| Gila | 155 | 5 | 150 | 63 | 87 |
| Graham | 103 | 3 | 100 | 36 | 64 |
| Greenlee | 12 | 0 | 12 | 4 | 8 |
| Maricopa | 8,157 | 162 | 7,995 | 2,853 | 5,142 |
| Mohave | 307 | 6 | 301 | 83 | 218 |
| Navajo | 261 | 3 | 258 | 94 | 164 |
| Pima | 2,196 | 41 | 2,155 | 741 | 1,414 |
| Pinal | 544 | 8 | 536 | 196 | 340 |
| Santa Cruz | 117 | 1 | 116 | 52 | 64 |
| Yavapai | 279 | 2 | 277 | 105 | 172 |
| Yuma | 463 | 9 | 454 | 148 | 306 |
| La Paz | 43 | 1 | 42 | 14 | 28 |
| TOTAL STATE** | 13,429 | 253 | 13,176 | 4,661 | 8,515 |

| County of residence | PREGNANCY RATES:*** | | | | |
|---------------------|-------------------------|-------------|-------------|-------------|-------------|
| | All 19 years or younger | 10-14 years | 15-19 years | | |
| | | | Total | 15-17 years | 18-19 years |
| Apache | 21.6 | .2 | 47.6 | 25.6 | 91.9 |
| Cochise | 34.3 | 1.1 | 69.1 | 39.9 | 116.8 |
| Coconino | 30.3 | 1.0 | 57.5 | 35.6 | 84.3 |
| Gila | 43.2 | 2.6 | 91.2 | 58.3 | 154.3 |
| Graham | 33.8 | 2.1 | 62.9 | 43.1 | 84.9 |
| Greenlee | 18.3 | .0 | 37.5 | 18.3 | 78.4 |
| Maricopa | 37.2 | 1.4 | 74.9 | 45.4 | 117.3 |
| Mohave | 31.4 | 1.2 | 65.3 | 28.0 | 132.5 |
| Navajo | 26.7 | .6 | 57.3 | 31.0 | 111.7 |
| Pima | 36.0 | 1.4 | 68.1 | 43.6 | 96.6 |
| Pinal | 43.7 | 1.2 | 91.5 | 53.1 | 156.9 |
| Santa Cruz | 33.0 | .5 | 71.0 | 48.6 | 113.7 |
| Yavapai | 26.3 | .4 | 53.6 | 31.9 | 91.8 |
| Yuma | 36.7 | 1.4 | 76.1 | 40.8 | 130.8 |
| La Paz | 36.8 | 1.7 | 74.1 | 36.5 | 153.0 |
| TOTAL STATE | 36.0 | 1.3 | 72.0 | 43.2 | 113.2 |

*The sum of live births, fetal deaths and abortions.

**Includes records with unknown county of residence.

***The number of pregnancies per 1,000 females in specified group.

**TABLE 10-B
BIRTHS AND BIRTH RATES, FEMALES 19 OR LESS YEARS OLD
BY COUNTY OF RESIDENCE, ARIZONA, 2001**

| County of residence | NUMBER OF BIRTHS: | | | | |
|---------------------|-------------------------|-------------|-------------|-------------|-------------|
| | All 19 years or younger | 10-14 years | 15-19 years | | |
| | | | Total | 15-17 years | 18-19 years |
| Apache | 154 | 1 | 153 | 55 | 98 |
| Cochise | 264 | 2 | 262 | 95 | 167 |
| Coconino | 254 | 2 | 252 | 84 | 168 |
| Gila | 149 | 4 | 145 | 59 | 86 |
| Graham | 99 | 3 | 96 | 34 | 62 |
| Greenlee | 11 | 0 | 11 | 4 | 7 |
| Maricopa | 7,222 | 131 | 7,091 | 2,522 | 4,569 |
| Mohave | 305 | 6 | 299 | 83 | 216 |
| Navajo | 250 | 3 | 247 | 89 | 158 |
| Pima | 1,722 | 28 | 1,694 | 577 | 1,117 |
| Pinal | 522 | 8 | 514 | 186 | 328 |
| Santa Cruz | 109 | 1 | 108 | 48 | 60 |
| Yavapai | 247 | 1 | 246 | 89 | 157 |
| Yuma | 440 | 7 | 433 | 142 | 291 |
| La Paz | 40 | 1 | 39 | 12 | 27 |
| TOTAL STATE* | 11,790 | 198 | 11,592 | 4,080 | 7,512 |

| County of residence | BIRTH RATES:** | | | | |
|---------------------|-------------------------|-------------|-------------|-------------|-------------|
| | All 19 years or younger | 10-14 years | 15-19 years | | |
| | | | Total | 15-17 years | 18-19 years |
| Apache | 21.2 | .2 | 46.7 | 25.2 | 90.1 |
| Cochise | 29.8 | .4 | 60.6 | 35.4 | 101.6 |
| Coconino | 25.3 | .4 | 48.5 | 29.3 | 71.9 |
| Gila | 41.6 | 2.1 | 88.2 | 54.6 | 152.5 |
| Graham | 32.5 | 2.1 | 60.4 | 40.7 | 82.2 |
| Greenlee | 16.8 | .0 | 34.4 | 18.3 | 68.6 |
| Maricopa | 33.0 | 1.2 | 66.4 | 40.1 | 104.2 |
| Mohave | 31.2 | 1.2 | 64.9 | 28.0 | 131.3 |
| Navajo | 25.6 | .6 | 54.8 | 29.3 | 107.6 |
| Pima | 28.2 | 1.0 | 53.5 | 33.9 | 76.3 |
| Pinal | 41.9 | 1.2 | 87.8 | 50.4 | 151.4 |
| Santa Cruz | 30.7 | .5 | 66.1 | 44.8 | 106.6 |
| Yavapai | 23.3 | .2 | 47.6 | 27.0 | 83.8 |
| Yuma | 34.9 | 1.1 | 72.6 | 39.1 | 124.4 |
| La Paz | 34.2 | 1.7 | 68.8 | 31.3 | 147.5 |
| TOTAL STATE | 31.6 | 1.0 | 63.3 | 37.8 | 99.9 |

*Includes records with unknown county of residence.

**The number of births per 1,000 females in specified group.

**TABLE 11
PREGNANCY RATES¹ AND NUMBER OF LIVE BIRTHS,
FETAL DEATHS AND ABORTIONS TO TEENS BY INDIVIDUAL AGE,
ARIZONA, 2001**

| Age | Population | Live births | Stillbirths (Fetal deaths) | Abortions | TOTAL PREGNANCIES | |
|--------------------|------------|-------------|----------------------------|-----------|-------------------|--------------|
| | | | | | Number | Rate |
| 10 | 40,089 | 0 | 0 | 0 | 0 | 0.0 |
| 11 | 38,148 | 0 | 0 | 0 | 0 | 0.0 |
| 12 | 37,862 | 3 | 1 | 3 | 7 | 0.2 |
| 13 | 37,138 | 28 | 2 | 8 | 38 | 1.0 |
| 14 | 37,121 | 167 | 6 | 35 | 208 | 5.6 |
| 10-14 | 190,358 | 198 | 9 | 46 | 253 | 1.3 |
| 15 | 36,409 | 620 | 10 | 108 | 738 | 20.3 |
| 16 | 35,309 | 1,353 | 15 | 167 | 1,535 | 43.5 |
| 17 | 36,128 | 2,107 | 16 | 265 | 2,388 | 66.1 |
| 15-17 | 107,846 | 4,080 | 41 | 540 | 4,661 | 43.2 |
| 18 | 37,154 | 3,168 | 30 | 438 | 3,636 | 97.9 |
| 19 | 38,057 | 4,344 | 31 | 504 | 4,879 | 128.2 |
| 18-19 | 75,211 | 7,512 | 61 | 942 | 8,515 | 113.2 |
| Total 10-19 | 373,415 | 11,790 | 111 | 1,528 | 13,429 | 36.0 |

¹ Rates per 1,000 female population in specific group.

**TABLE 12
BIRTHS TO FEMALES 19 OR LESS YEARS OLD BY AGE AND COUNTY OF RESIDENCE,
ARIZONA, 2001**

| | Age: | | | | | | | | |
|--------------------|--------|----|----|-----|-----|-------|-------|-------|-------|
| | Total | 12 | 13 | 14 | 15 | 16 | 17 | 18 | 19 |
| TOTAL STATE | 11,790 | 3 | 28 | 167 | 620 | 1,353 | 2,107 | 3,168 | 4,344 |
| APACHE | 154 | 0 | 1 | 0 | 8 | 18 | 29 | 42 | 56 |
| COCHISE | 264 | 0 | 1 | 1 | 7 | 34 | 54 | 66 | 101 |
| COCONINO | 254 | 0 | 0 | 2 | 10 | 28 | 46 | 74 | 94 |
| GILA | 149 | 0 | 1 | 3 | 6 | 23 | 30 | 32 | 54 |
| GRAHAM | 99 | 0 | 1 | 2 | 8 | 8 | 18 | 22 | 40 |
| GREENLEE | 11 | 0 | 0 | 0 | 0 | 1 | 3 | 1 | 6 |
| MARICOPA | 7,222 | 1 | 18 | 112 | 398 | 837 | 1,287 | 1,921 | 2,648 |
| MOHAVE | 305 | 0 | 1 | 5 | 7 | 31 | 45 | 79 | 137 |
| NAVAJO | 250 | 0 | 0 | 3 | 11 | 37 | 41 | 75 | 83 |
| PIMA | 1,722 | 2 | 2 | 24 | 96 | 179 | 302 | 482 | 635 |
| PINAL | 522 | 0 | 2 | 6 | 33 | 52 | 101 | 143 | 185 |
| SANTA CRUZ | 109 | 0 | 0 | 1 | 7 | 21 | 20 | 26 | 34 |
| YAVAPAI | 247 | 0 | 0 | 1 | 14 | 34 | 41 | 67 | 90 |
| YUMA | 440 | 0 | 1 | 6 | 14 | 44 | 84 | 127 | 164 |
| LA PAZ | 40 | 0 | 0 | 1 | 1 | 6 | 5 | 11 | 16 |
| UNKNOWN | 2 | 0 | 0 | 0 | 0 | 0 | 1 | 0 | 1 |

TABLE 13
ABORTIONS TO FEMALES 19 OR LESS YEARS OLD BY AGE AND COUNTY
OF RESIDENCE, ARIZONA, 2001

| | TOTAL | AGE | | | | | | | |
|--------------------|-------|-----|----|----|-----|-----|-----|-----|-----|
| | | 12 | 13 | 14 | 15 | 16 | 17 | 18 | 19 |
| TOTAL STATE | 1,528 | 3 | 8 | 35 | 108 | 167 | 265 | 438 | 504 |
| APACHE | 2 | 0 | 0 | 0 | 1 | 0 | 0 | 1 | 0 |
| COCHISE | 38 | 0 | 0 | 2 | 1 | 5 | 6 | 13 | 11 |
| COCONINO | 46 | 0 | 1 | 2 | 3 | 5 | 6 | 14 | 15 |
| GILA | 5 | 0 | 0 | 1 | 0 | 1 | 2 | 1 | 0 |
| GRAHAM | 4 | 0 | 0 | 0 | 0 | 1 | 1 | 0 | 2 |
| GREENLEE | 1 | 0 | 0 | 0 | 0 | 0 | 0 | 1 | 0 |
| MARICOPA | 865 | 3 | 5 | 17 | 61 | 91 | 152 | 252 | 284 |
| MOHAVE | 0 | 0 | 0 | 0 | 0 | 0 | 0 | 0 | 0 |
| NAVAJO | 8 | 0 | 0 | 0 | 0 | 2 | 2 | 1 | 3 |
| PIMA | 458 | 0 | 2 | 10 | 34 | 50 | 75 | 131 | 156 |
| PINAL | 18 | 0 | 0 | 0 | 2 | 0 | 6 | 5 | 5 |
| SANTA CRUZ | 8 | 0 | 0 | 0 | 0 | 2 | 2 | 3 | 1 |
| YAVAPAI | 29 | 0 | 0 | 1 | 4 | 8 | 4 | 5 | 7 |
| YUMA | 18 | 0 | 0 | 1 | 1 | 0 | 4 | 6 | 6 |
| LA PAZ | 3 | 0 | 0 | 0 | 0 | 2 | 0 | 0 | 1 |
| UNKNOWN | 25 | 0 | 0 | 1 | 1 | 0 | 5 | 5 | 13 |

TABLE 14
SOURCES OF PAYMENT FOR LABOR AND DELIVERY, FEMALES 19 OR LESS YEARS
OLD BY COUNTY OF RESIDENCE, ARIZONA, 2001

| | Total | Payee for birth | | | | |
|--------------------|--------|-----------------|-----|-------------------|------|---------|
| | | AHCCCS | IHS | Private insurance | Self | Unknown |
| TOTAL STATE | 11,790 | 8,687 | 234 | 2,360 | 286 | 223 |
| APACHE | 154 | 106 | 30 | 2 | 0 | 16 |
| COCHISE | 264 | 182 | 0 | 71 | 9 | 2 |
| COCONINO | 254 | 169 | 56 | 21 | 1 | 7 |
| GILA | 149 | 89 | 40 | 13 | 1 | 6 |
| GRAHAM | 99 | 79 | 7 | 11 | 1 | 1 |
| GREENLEE | 11 | 8 | 0 | 3 | 0 | 0 |
| MARICOPA | 7,222 | 5,464 | 29 | 1,488 | 157 | 84 |
| MOHAVE | 305 | 231 | 2 | 35 | 4 | 33 |
| NAVAJO | 250 | 162 | 51 | 22 | 0 | 15 |
| PIMA | 1,722 | 1,187 | 10 | 459 | 34 | 32 |
| PINAL | 522 | 375 | 9 | 119 | 14 | 5 |
| SANTA CRUZ | 109 | 86 | 0 | 11 | 12 | 0 |
| YAVAPAI | 247 | 206 | 0 | 30 | 6 | 5 |
| YUMA | 440 | 320 | 0 | 70 | 46 | 4 |
| LA PAZ | 40 | 22 | 0 | 5 | 1 | 12 |
| UNKNOWN | 2 | 1 | 0 | 0 | 0 | 1 |

**TABLE 15
SOURCES OF PAYMENT FOR LABOR AND DELIVERY, FEMALES 19 OR LESS
YEARS OLD BY AGE GROUP, ARIZONA, 2001**

| | | | Total | Mother's age group | | |
|----------------------------|------------------------------|----------------|--------|--------------------|-------|-------|
| | | | | <15 | 15-17 | 18-19 |
| Total | | | 11,790 | 198 | 4,080 | 7,512 |
| Payee for birth | AHCCCS | Count | 8,687 | 161 | 3,004 | 5,522 |
| | | Percent | 73.7% | 81.3% | 73.6% | 73.5% |
| | IHS | Count | 234 | 5 | 87 | 142 |
| | | Percent | 2.0% | 2.5% | 2.1% | 1.9% |
| | Private insurance | Count | 2,360 | 24 | 784 | 1,552 |
| | | Percent | 20.0% | 12.1% | 19.2% | 20.7% |
| | Self | Count | 286 | 2 | 124 | 160 |
| | | Percent | 2.4% | 1.0% | 3.0% | 2.1% |
| | Unknown | Count | 223 | 6 | 81 | 136 |
| | | Percent | 1.9% | 3.0% | 2.0% | 1.8% |

TABLE 16
TEENAGE BIRTHS BY NUMBER OF PREVIOUS PREGNANCIES BY AGE GROUP,
ARIZONA, 2001

| | | | Total | Mother's age group | | |
|--------------------------------|------------------|----------------|--------|--------------------|-------|-------|
| | | | | <15 | 15-17 | 18-19 |
| Total | | | 11,790 | 198 | 4,080 | 7,512 |
| Total prior pregnancies | None | Count | 8,319 | 187 | 3,374 | 4,758 |
| | | Percent | 70.6% | 94.4% | 82.7% | 63.3% |
| | 1 | Count | 2,671 | 10 | 604 | 2,057 |
| | | Percent | 22.7% | 5.1% | 14.8% | 27.4% |
| | 2 | Count | 591 | 0 | 73 | 518 |
| | | Percent | 5.0% | .0% | 1.8% | 6.9% |
| | 3 | Count | 137 | 0 | 11 | 126 |
| | | Percent | 1.2% | .0% | .3% | 1.7% |
| | 4 or more | Count | 23 | 0 | 1 | 22 |
| | | Percent | .2% | .0% | .0% | .3% |
| | Unknown | Count | 49 | 1 | 17 | 31 |
| | | Percent | .4% | .5% | .4% | .4% |

TABLE 17
TEENAGE BIRTHS BY MARITAL STATUS AND AGE GROUP, ARIZONA, 2001

| | | | Total | Mother's age group | | |
|-----------------------|------------------|----------------|--------|--------------------|-------|-------|
| | | | | <15 | 15-17 | 18-19 |
| Total | | | 11,790 | 198 | 4,080 | 7,512 |
| Marital status | Married | Count | 2,192 | 3 | 419 | 1,770 |
| | | Percent | 18.6% | 1.5% | 10.3% | 23.6% |
| | Unmarried | Count | 9,567 | 195 | 3,653 | 5,719 |
| | | Percent | 81.1% | 98.5% | 89.5% | 76.1% |
| | Other | Count | 31 | 0 | 8 | 23 |
| | | Percent | .3% | .0% | .2% | .3% |

**TABLE 18
TEENAGE BIRTHS BY MOTHER'S EDUCATION AND AGE GROUP, ARIZONA, 2001**

| | | | Total | Mother's age group | | |
|---------------------------|----------------|----------------|--------|--------------------|-------|-------|
| | | | | <15 | 15-17 | 18-19 |
| Total | | | 11,790 | 198 | 4,080 | 7,512 |
| Mother's education | < 8 | Count | 740 | 53 | 272 | 415 |
| | | Percent | 6.3% | 26.8% | 6.7% | 5.5% |
| | 8 | Count | 883 | 86 | 442 | 355 |
| | | Percent | 7.5% | 43.4% | 10.8% | 4.7% |
| | 9-11 | Count | 6,042 | 53 | 2,844 | 3,145 |
| | | Percent | 51.2% | 26.8% | 69.7% | 41.9% |
| | 12 | Count | 3,256 | 0 | 419 | 2,837 |
| | | Percent | 27.6% | .0% | 10.3% | 37.8% |
| | 13-16 | Count | 615 | 0 | 23 | 592 |
| | | Percent | 5.2% | .0% | .6% | 7.9% |
| | Unknown | Count | 254 | 6 | 80 | 168 |
| | | Percent | 2.2% | 3.0% | 2.0% | 2.2% |

TABLE 19
TEENAGE BIRTHS BY TRIMESTER OF ENTRY INTO PRENATAL CARE AND
AGE GROUP, ARIZONA, 2001

| | | Total | Mother's age group | | |
|----------------------|----------------|--------|--------------------|-------|-------|
| | | | <15 | 15-17 | 18-19 |
| Total | | 11,790 | 198 | 4,080 | 7,512 |
| No care | Count | 319 | 11 | 129 | 179 |
| | Percent | 2.7 | 5.6 | 3.2 | 2.4 |
| 1st trimester | Count | 7,319 | 92 | 2,373 | 4,854 |
| | Percent | 62.1 | 46.5 | 58.2 | 64.6 |
| 2nd trimester | Count | 3,093 | 71 | 1,170 | 1,852 |
| | Percent | 26.2 | 35.9 | 28.7 | 24.7 |
| 3rd trimester | Count | 816 | 18 | 321 | 477 |
| | Percent | 6.9 | 9.1 | 7.9 | 6.3 |
| Unknown | Count | 243 | 6 | 87 | 150 |
| | Percent | 2.1 | 3.0 | 2.1 | 2.0 |

**TABLE 20
TEENAGE BIRTHS BY NUMBER OF PRENATAL VISITS BY AGE GROUP,
ARIZONA, 2001**

| | | | Total | Mother's age group | | |
|----------------------------------|--------------------|----------------|--------|--------------------|-------|-------|
| | | | | <15 | 15-17 | 18-19 |
| Total | | | 11,790 | 198 | 4,080 | 7,512 |
| Number of prenatal visits | No visits | Count | 319 | 11 | 129 | 179 |
| | | Percent | 2.7 | 5.6 | 3.2 | 2.4 |
| | 1-4 visits | Count | 796 | 13 | 297 | 486 |
| | | Percent | 6.8 | 6.6 | 7.3 | 6.5 |
| | 5-8 visits | Count | 2,424 | 48 | 940 | 1,436 |
| | | Percent | 20.6 | 24.2 | 23.0 | 19.1 |
| | 9-12 visits | Count | 4,630 | 60 | 1,551 | 3,019 |
| | | Percent | 39.3 | 30.3 | 38.0 | 40.2 |
| | 13+ visits | Count | 3,259 | 58 | 1,036 | 2,165 |
| | | Percent | 27.6 | 29.3 | 25.4 | 28.8 |
| | Unknown | Count | 362 | 8 | 127 | 227 |
| | | Percent | 3.1 | 4.0 | 3.1 | 3.0 |

**TABLE 21
TOBACCO AND/OR ALCOHOL USE DURING PREGNANCY AMONG FEMALES 19
OR LESS YEARS OLD BY AGE GROUP, ARIZONA, 2001**

| | | | Total | Mother's age group | | |
|----------------------|-----------------------------|----------------|--------|--------------------|-------|-------|
| | | | | <15 | 15-17 | 18-19 |
| Total | | | 11,790 | 198 | 4,080 | 7,512 |
| Substance use | Drinker, nonsmoker | Count | 19 | 0 | 6 | 13 |
| | | Percent | .2 | .0 | .1 | .2 |
| | Smoker, nondrinker | Count | 813 | 6 | 227 | 580 |
| | | Percent | 6.9 | 3.0 | 5.6 | 7.7 |
| | Smoker and drinker | Count | 45 | 1 | 15 | 29 |
| | | Percent | .4 | .5 | .4 | .4 |
| | Nonsmoker nondrinker | Count | 10,913 | 191 | 3,832 | 6,890 |
| | | Percent | 92.6 | 96.5 | 93.9 | 91.7 |

**TABLE 22
RISK FOR LOW-BIRTHWEIGHT (LBW) BIRTHS BY SELECTED CHARACTERISTICS OF FEMALES 19 OR LESS
YEARS OLD, ARIZONA, 2001**

| | Mother's age group | | | | | | | | | |
|--------------------------------|-----------------------|---------------------|---------|-----------------------|---------------------|---------|-----------------------|---------------------|---------|--|
| | <15 | | | 15-17 | | | 18-19 | | | |
| | Total births Count | LBW births Count | Percent | Total births Count | LBW births Count | Percent | Total births Count | LBW births Count | Percent | |
| Race/ ethnicity | | | | | | | | | | |
| White non Hispanic | 34 | 2 | 5.9% | 926 | 80 | 8.6% | 2436 | 171 | 7.0% | |
| Hispanic | 132 | 8 | 6.1% | 2552 | 229 | 9.0% | 3964 | 306 | 7.7% | |
| Black | 13 | 2 | 15.4% | 193 | 28 | 14.5% | 339 | 37 | 10.9% | |
| American Indian | 17 | 1 | 5.9% | 348 | 26 | 7.5% | 648 | 53 | 8.2% | |
| Asian | 0 | 0 | .0% | 29 | 2 | 6.9% | 75 | 8 | 10.7% | |
| Unknown | 2 | 0 | .0% | 32 | 4 | 12.5% | 50 | 2 | 4.0% | |
| Substance use | | | | | | | | | | |
| Drinker, nonsmoker | 0 | 0 | .0% | 6 | 1 | 16.7% | 13 | 1 | 7.7% | |
| Smoker, nondrinker | 6 | 1 | 16.7% | 227 | 35 | 15.4% | 580 | 59 | 10.2% | |
| Smoker and drinker | 1 | 0 | .0% | 15 | 1 | 6.7% | 29 | 3 | 10.3% | |
| Nonsmoker and nondrinker | 191 | 12 | 6.3% | 3832 | 332 | 8.7% | 6890 | 514 | 7.5% | |
| Payee for birth | | | | | | | | | | |
| AHCCCS | 161 | 12 | 7.5% | 3004 | 275 | 9.2% | 5522 | 421 | 7.6% | |
| IHS | 5 | 0 | .0% | 87 | 4 | 4.6% | 142 | 8 | 5.6% | |
| Private insurance | 24 | 0 | .0% | 784 | 67 | 8.5% | 1552 | 115 | 7.4% | |
| Self | 2 | 0 | .0% | 124 | 16 | 12.9% | 160 | 21 | 13.1% | |
| Length of gestation | | | | | | | | | | |
| Preterm (36 weeks or less) | 6 | 1 | 16.7% | 81 | 7 | 8.6% | 136 | 12 | 8.8% | |
| Term (37 weeks or more) | 42 | 12 | 28.6% | 807 | 290 | 35.9% | 1378 | 469 | 34.0% | |
| Unknown | 156 | 1 | .6% | 3273 | 79 | 2.4% | 6134 | 108 | 1.8% | |
| Prenatal Visits | | | | | | | | | | |
| <5 visits | 24 | 3 | 12.5% | 426 | 62 | 14.6% | 665 | 100 | 15.0% | |
| 5 or more visits | 166 | 9 | 5.4% | 3527 | 300 | 8.5% | 6620 | 449 | 6.8% | |
| Unknown | 8 | 1 | 12.5% | 127 | 7 | 5.5% | 227 | 28 | 12.3% | |

Low birthweight: any neonate weighing less than 2,500 grams (less than 5 pounds 8 ounces).

TABLE 23
LIVE BIRTHS TO FEMALES 19 OR LESS YEARS OF AGE AS PERCENTAGE OF TOTAL
LIVE BIRTHS BY AREA, ETHNIC GROUP AND YEAR, ARIZONA, 1991-2001

| Group | 1991 | 1992 | 1993 | 1994 | 1995 | 1996 | 1997 | 1998 | 1999 | 2000 | 2001 |
|-----------------------------------|--------|--------|--------|--------|--------|--------|--------|--------|--------|--------|--------|
| ARIZONA, TOTAL¹ | | | | | | | | | | | |
| # Births (all ages) | 68,040 | 68,675 | 69,037 | 70,896 | 72,386 | 75,094 | 75,563 | 77,940 | 80,505 | 84,985 | 85,213 |
| # Births to Teenagers | 10,108 | 10,307 | 10,438 | 10,858 | 10,973 | 11,247 | 11,085 | 11,695 | 11,963 | 12,189 | 11,790 |
| % Births to Teenagers | 14.9 | 15.0 | 15.1 | 15.3 | 15.2 | 15.0 | 14.7 | 15.0 | 14.9 | 14.3 | 13.8 |
| URBAN COUNTIES² | | | | | | | | | | | |
| # Births (all ages) | 53,759 | 54,391 | 54,627 | 58,733 | 60,293 | 62,879 | 63,510 | 65,825 | 68,611 | 72,596 | 73,319 |
| # Births to Teenagers | 7,653 | 7,852 | 7,887 | 8,862 | 8,956 | 9,234 | 9,076 | 9,605 | 9,896 | 10,102 | 9,906 |
| % Births to Teenagers | 14.2 | 14.4 | 14.4 | 15.1 | 14.9 | 14.7 | 14.3 | 14.6 | 14.4 | 13.9 | 13.5 |
| RURAL COUNTIES | | | | | | | | | | | |
| # Births (all ages) | 14,281 | 14,284 | 14,410 | 12,163 | 12,093 | 12,215 | 12,053 | 12,115 | 11,877 | 12,333 | 11,851 |
| # Births to Teenagers | 2,455 | 2,455 | 2,551 | 1,996 | 2,017 | 2,009 | 2,009 | 2,090 | 2,067 | 2,083 | 1,882 |
| % Births to Teenagers | 17.2 | 17.2 | 17.7 | 16.4 | 16.7 | 16.4 | 16.7 | 17.3 | 17.4 | 16.9 | 15.9 |
| WHITE NON-HISPANIC | | | | | | | | | | | |
| # Births (all ages) | 38,213 | 37,727 | 37,381 | 37,780 | 38,488 | 38,494 | 37,869 | 38,611 | 38,711 | 39,850 | 38,934 |
| # Births to Teenagers | 4,061 | 4,060 | 4,024 | 4,023 | 4,042 | 4,033 | 3,733 | 3,843 | 3,869 | 3,759 | 3,396 |
| % Births to Teenagers | 10.3 | 10.8 | 10.8 | 10.6 | 10.5 | 10.5 | 9.9 | 10.0 | 10.0 | 9.4 | 8.7 |
| HISPANIC | | | | | | | | | | | |
| # Births (all ages) | 20,231 | 21,553 | 22,247 | 23,724 | 25,141 | 27,396 | 27,941 | 28,824 | 30,784 | 33,893 | 35,103 |
| # Births to Teenagers | 4,255 | 4,543 | 4,688 | 5,075 | 5,351 | 5,628 | 5,736 | 5,951 | 6,161 | 6,548 | 6,648 |
| % Births to Teenagers | 21.0 | 21.1 | 21.1 | 21.4 | 21.3 | 20.5 | 20.5 | 20.6 | 20.0 | 19.3 | 18.9 |
| BLACK | | | | | | | | | | | |
| # Births (all ages) | 2,518 | 2,447 | 2,402 | 2,477 | 2,233 | 2,336 | 2,485 | 2,629 | 2,699 | 2,760 | 2,736 |
| # Births to Teenagers | 620 | 570 | 581 | 576 | 491 | 498 | 519 | 586 | 603 | 572 | 545 |
| % Births to Teenagers | 24.6 | 23.3 | 24.2 | 23.3 | 22.0 | 21.3 | 20.9 | 22.3 | 22.3 | 20.7 | 19.9 |
| AMERICAN INDIAN | | | | | | | | | | | |
| # Births (all ages) | 6,076 | 5,872 | 5,781 | 5,513 | 5,086 | 5,328 | 5,271 | 5,460 | 5,295 | 5,602 | 5,340 |
| # Births to Teenagers | 1,102 | 1,080 | 1,060 | 1,095 | 991 | 996 | 971 | 1,122 | 1,050 | 1,089 | 1,013 |
| % Births to Teenagers | 18.1 | 18.4 | 18.3 | 19.9 | 19.5 | 18.6 | 18.4 | 20.6 | 19.8 | 19.4 | 19.0 |

¹Includes records for ethnic groups other than White, Hispanic, Black or American Indian.

²Urban = Maricopa, Pima, Pinal, and Yuma. The remaining counties comprise Arizona's rural areas.

**TABLE 24
BIRTH RATES BY AGE GROUP FOR FEMALES 19 OR LESS YEARS OLD,
ARIZONA AND UNITED STATES, 1991-2001**

| Year | Under 15 Years | | 15 - 19 Years Old | | | | | |
|-------------|----------------|------|-------------------|------|-------------|------|-------------|------|
| | AZ | U.S. | Total | | 15-17 Years | | 18-19 Years | |
| | | | AZ | U.S. | AZ | U.S. | AZ | U.S. |
| 1991 | 1.5 | 1.4 | 77.7 | 62.1 | 50.4 | 38.7 | 110.2 | 94.4 |
| 1992 | 1.4 | 1.4 | 75.9 | 60.7 | 50.7 | 37.8 | 114.1 | 94.5 |
| 1993 | 1.3 | 1.4 | 82.1 | 59.6 | 51.2 | 37.8 | 116.4 | 92.1 |
| 1994 | 1.7 | 1.4 | 82.8 | 58.9 | 53.0 | 37.6 | 118.5 | 91.5 |
| 1995 | 1.6 | 1.3 | 79.1 | 56.8 | 50.1 | 36.0 | 117.1 | 89.1 |
| 1996 | 1.4 | 1.2 | 76.1 | 54.4 | 49.0 | 33.8 | 119.0 | 86.0 |
| 1997 | 1.4 | 1.1 | 72.8 | 52.3 | 46.1 | 32.1 | 114.9 | 83.6 |
| 1998 | 1.4 | 1.0 | 73.9 | 51.1 | 47.0 | 30.4 | 114.9 | 82.0 |
| 1999 | 1.4 | 0.9 | 72.9 | 49.6 | 43.7 | 28.7 | 117.1 | 80.3 |
| 2000 | 1.2 | 0.9 | 67.6 | 48.5 | 41.1 | 27.4 | 105.7 | 79.2 |
| 2001 | 1.0 | 0.8 | 63.3 | 45.9 | 37.8 | 25.3 | 99.9 | 75.8 |

Note: the U.S. data are from Martin JA, Park MM, Sutton PD. Births: Preliminary data for 2001. National vital statistics reports; vol.50 no 10. Hyattsville, Maryland. National Center for Health Statistics, June 6, 2002.

**TABLE 25
REPEAT PREGNANCIES AMONG TEENAGE MOTHERS GIVING BIRTHS BY AGE AND YEAR,
ARIZONA, 1991-2001**

| MOTHER'S AGE | | YEAR OF BIRTH | | | | | | | | | | | | |
|--------------|----------------------|---------------|------|------|------|------|------|------|------|------|------|------|------|------|
| | | 1991 | 1992 | 1993 | 1994 | 1995 | 1996 | 1997 | 1998 | 1999 | 2000 | 2001 | | |
| 11 | Total | 2 | 0 | 0 | 1 | 0 | 1 | 1 | 0 | 0 | 0 | 0 | 0 | 0 |
| | Previous pregnancies | 1 | 0 | 0 | 1 | 0 | 1 | 1 | 0 | 0 | 0 | 0 | 0 | 0 |
| 12 | One or more | 1 | 0 | 0 | 0 | 0 | 0 | 0 | 0 | 0 | 0 | 0 | 0 | 0 |
| | Total | 4 | 1 | 2 | 3 | 6 | 3 | 4 | 5 | 2 | 4 | 3 | 3 | 3 |
| 13 | Previous pregnancies | 2 | 1 | 2 | 3 | 6 | 3 | 4 | 4 | 2 | 4 | 3 | 3 | 3 |
| | One or more | 2 | 0 | 0 | 0 | 0 | 0 | 0 | 1 | 0 | 0 | 0 | 0 | 0 |
| 14 | Total | 36 | 32 | 27 | 45 | 32 | 34 | 33 | 34 | 36 | 37 | 28 | 28 | 28 |
| | Previous pregnancies | 33 | 31 | 26 | 43 | 31 | 32 | 33 | 33 | 36 | 35 | 28 | 28 | 28 |
| 15 | One or more | 3 | 1 | 1 | 2 | 1 | 2 | 0 | 1 | 0 | 2 | 0 | 0 | 0 |
| | Total | 151 | 155 | 158 | 197 | 191 | 178 | 176 | 195 | 200 | 175 | 167 | 167 | 167 |
| 16 | Previous pregnancies | 143 | 146 | 152 | 188 | 181 | 174 | 165 | 186 | 189 | 172 | 157 | 157 | 157 |
| | One or more | 8 | 9 | 6 | 9 | 10 | 4 | 11 | 9 | 11 | 3 | 10 | 10 | 10 |
| 17 | Total | 549 | 561 | 555 | 664 | 649 | 658 | 598 | 651 | 595 | 647 | 620 | 620 | 620 |
| | Previous pregnancies | 481 | 517 | 512 | 601 | 588 | 613 | 553 | 597 | 559 | 604 | 569 | 569 | 569 |
| 18 | One or more | 68 | 44 | 43 | 63 | 61 | 45 | 41 | 51 | 35 | 36 | 49 | 49 | 49 |
| | Unknown | 0 | 0 | 0 | 0 | 0 | 0 | 4 | 3 | 1 | 3 | 2 | 2 | 2 |
| 19 | Total | 1227 | 1180 | 1303 | 1315 | 1337 | 1434 | 1363 | 1443 | 1388 | 1376 | 1353 | 1353 | 1353 |
| | Previous pregnancies | 1021 | 985 | 1121 | 1126 | 1175 | 1239 | 1175 | 1261 | 1207 | 1205 | 1171 | 1171 | 1171 |
| 20 | One or more | 206 | 195 | 182 | 189 | 162 | 195 | 182 | 175 | 177 | 163 | 176 | 176 | 176 |
| | Unknown | 0 | 0 | 0 | 0 | 0 | 0 | 6 | 7 | 4 | 8 | 6 | 6 | 6 |
| 21 | Total | 1950 | 2097 | 2012 | 2153 | 2192 | 2248 | 2258 | 2303 | 2253 | 2261 | 2107 | 2107 | 2107 |
| | Previous pregnancies | 1449 | 1559 | 1507 | 1669 | 1710 | 1778 | 1729 | 1831 | 1772 | 1806 | 1634 | 1634 | 1634 |
| 22 | One or more | 501 | 538 | 505 | 484 | 482 | 470 | 516 | 463 | 475 | 447 | 464 | 464 | 464 |
| | Unknown | 0 | 0 | 0 | 0 | 0 | 0 | 13 | 9 | 6 | 8 | 9 | 9 | 9 |
| 23 | Total | 2739 | 2848 | 2862 | 2865 | 3005 | 2926 | 2902 | 3153 | 3300 | 3338 | 3168 | 3168 | 3168 |
| | Previous pregnancies | 1713 | 1839 | 1864 | 1911 | 2050 | 2032 | 1951 | 2138 | 2247 | 2313 | 2161 | 2161 | 2161 |
| 24 | One or more | 1026 | 1009 | 998 | 954 | 955 | 894 | 939 | 1002 | 1041 | 1014 | 988 | 988 | 988 |
| | Unknown | 0 | 0 | 0 | 0 | 0 | 0 | 12 | 13 | 12 | 11 | 19 | 19 | 19 |
| 25 | Total | 3450 | 3433 | 3519 | 3615 | 3561 | 3765 | 3750 | 3911 | 4189 | 4351 | 4344 | 4344 | 4344 |
| | Previous pregnancies | 1931 | 1961 | 1983 | 2117 | 2149 | 2194 | 2180 | 2284 | 2485 | 2627 | 2597 | 2597 | 2597 |
| 26 | One or more | 1519 | 1472 | 1536 | 1498 | 1412 | 1571 | 1554 | 1606 | 1680 | 1706 | 1735 | 1735 | 1735 |
| | Unknown | 0 | 0 | 0 | 0 | 0 | 0 | 16 | 21 | 24 | 18 | 12 | 12 | 12 |

**TABLE 26
CUMULATIVE NUMBER OF MOTHERS WHO WERE 19 OR
LESS YEARS OLD IN ARIZONA IN 2001**

| Year Baby Was Born | MOTHER'S AGE WHEN BABY WAS BORN | | | | | | | | | | Mother was 19 or younger in 2001 |
|---|---------------------------------|----------|-----------|------------|--------------|--------------|--------------|--------------|--------------|--------------|----------------------------------|
| | 10 | 11 | 12 | 13 | 14 | 15 | 16 | 17 | 18 | 19 | |
| 1992 | 0 | | | | | | | | | | 0 |
| 1993 | 0 | 0 | | | | | | | | | 0 |
| 1994 | 0 | 1 | 3 | | | | | | | | 4 |
| 1995 | 0 | 0 | 6 | 32 | | | | | | | 38 |
| 1996 | 0 | 1 | 3 | 34 | 178 | | | | | | 216 |
| 1997 | 0 | 1 | 4 | 33 | 176 | 598 | | | | | 812 |
| 1998 | 0 | 0 | 5 | 34 | 195 | 651 | 1,443 | | | | 2,328 |
| 1999 | 0 | 0 | 2 | 36 | 200 | 595 | 1,388 | 2,253 | | | 4,474 |
| 2000 | 0 | 0 | 4 | 37 | 175 | 647 | 1,376 | 2,261 | 3,338 | | 7,838 |
| 2001 | 0 | 0 | 3 | 28 | 167 | 620 | 1,352 | 2,107 | 3,168 | 4,344 | 11,790 |
| Cumulative number of mothers 19 or younger | 0 | 3 | 31 | 234 | 1,091 | 3,111 | 5,559 | 6,621 | 6,506 | 4,344 | 27,500 |

NOTE: The above table focuses on the 2001 cohort of Arizona mothers who were 19 or less years old that year. Among them are those who:

- gave birth to the 11,790 babies in 2001
- gave birth to a baby prior to 2001 and were still 19 or less years old in 2001.

The numbers below the main diagonal (and below the stair-like line) represent the number of mothers meeting either one of the above criteria. The last column to the right gives the cumulative total for 2001 by the year baby was born. For example, from among those girls and adolescents who had their baby in 1995, 38 remained in their teens in 2001. The bottom row gives the cumulative total by mother's age when baby was born. For example, among the 27,500 mothers under 20 in Arizona in 2001, 1,091 had given birth when 14 years old.

Excluded from the cumulative totals and not shown above the main diagonal (and above stair-like line) are the numbers of mothers who were 19 years old when the baby was born, but who were no longer under the age 20 by 2001. For example, mothers who were 11 years old in 1991 were 20 years old in 2001.

The figures in Table 26 are unadjusted for in-and-out migration, as well as mortality of mothers, in the period of 1992-2002.

**TABLE 27
POPULATION OF FEMALES 19 OR LESS YEARS OLD, NUMBER OF
PREGNANCIES AND PREGNANCY RATES BY AGE GROUP AND
RACE/ETHNICITY, ARIZONA, 2001**

| | POPULATION* | | | | |
|---------------------------|--------------------------------|--------------------|--------------------------|--------------------|--------------------|
| | All 19 years or younger | 10-14 years | 15-19 years total | 15-19 years | |
| | | | | 15-17 years | 18-19 years |
| White non-Hispanic | 197,446 | 99,017 | 98,429 | 57,633 | 40,796 |
| Hispanic | 122,570 | 63,327 | 59,243 | 34,765 | 24,478 |
| Black | 13,790 | 7,283 | 6,507 | 3,898 | 2,609 |
| American Indian | 28,679 | 15,310 | 13,369 | 8,353 | 5,016 |
| Asian | 6,596 | 3,088 | 3,508 | 1,933 | 1,575 |
| ALL GROUPS | 373,415 | 190,358 | 183,057 | 107,846 | 75,211 |

| | NUMBER OF PREGNANCIES | | | | |
|---------------------------|--------------------------------|--------------------|--------------------------|--------------------|--------------------|
| | All 19 years or younger | 10-14 years | 15-19 years total | 15-19 years | |
| | | | | 15-17 years | 18-19 years |
| White non-Hispanic | 4,175 | 53 | 4,122 | 1,197 | 2,925 |
| Hispanic | 7,239 | 159 | 7,080 | 2,771 | 4,309 |
| Black | 622 | 16 | 606 | 224 | 382 |
| American Indian | 1,053 | 21 | 1,032 | 363 | 669 |
| Asian | 134 | 0 | 134 | 44 | 90 |
| ALL GROUPS | 13,429 | 253 | 13,176 | 4,661 | 8,515 |

| | PREGNANCY RATES** | | | | |
|---------------------------|--------------------------------|--------------------|--------------------------|--------------------|--------------------|
| | All 19 years or younger | 10-14 years | 15-19 years total | 15-19 years | |
| | | | | 15-17 years | 18-19 years |
| White non-Hispanic | 21.1 | .5 | 41.9 | 20.8 | 71.7 |
| Hispanic | 59.1 | 2.5 | 119.5 | 79.7 | 176.0 |
| Black | 45.1 | 2.2 | 93.1 | 57.5 | 146.4 |
| American Indian | 36.7 | 1.4 | 77.2 | 43.5 | 133.4 |
| Asian | 20.3 | .0 | 38.2 | 22.8 | 57.1 |
| ALL GROUPS | 36.0 | 1.3 | 72.0 | 43.2 | 113.2 |

* See Table 28.

**Number of pregnancies per 1,000 females in specified group.

**TABLE 28
POPULATION OF FEMALES 19 OR LESS YEARS OLD
BY COUNTY OF RESIDENCE, ARIZONA, 2001**

| County of residence | All 19 years or younger | 10-14 years | 15-19 years, total | 15-19 years | |
|---------------------|-------------------------|-------------|--------------------|-------------|-------------|
| | | | | 15-17 years | 18-19 years |
| Apache | 7,275 | 4,001 | 3,274 | 2,186 | 1,088 |
| Cochise | 8,851 | 4,524 | 4,327 | 2,683 | 1,644 |
| Coconino | 10,028 | 4,829 | 5,199 | 2,863 | 2,336 |
| Gila | 3,586 | 1,942 | 1,644 | 1,080 | 564 |
| Graham | 3,046 | 1,457 | 1,589 | 835 | 754 |
| Greenlee | 654 | 334 | 320 | 218 | 102 |
| Maricopa | 219,053 | 112,303 | 106,750 | 62,907 | 43,843 |
| Mohave | 9,791 | 5,181 | 4,610 | 2,965 | 1,645 |
| Navajo | 9,776 | 5,271 | 4,505 | 3,037 | 1,468 |
| Pima | 60,974 | 29,326 | 31,648 | 17,007 | 14,641 |
| Pinal | 12,449 | 6,592 | 5,857 | 3,690 | 2,167 |
| Santa Cruz | 3,546 | 1,912 | 1,634 | 1,071 | 563 |
| Yavapai | 10,601 | 5,436 | 5,165 | 3,292 | 1,873 |
| Yuma | 12,615 | 6,647 | 5,968 | 3,628 | 2,340 |
| La Paz | 1,170 | 603 | 567 | 384 | 183 |
| TOTAL STATE | 373,415 | 190,358 | 183,057 | 107,846 | 75,211 |

NOTE: In order to obtain the 2001 population denominators, the 2000 percentages of population breakdowns (or census shares) by age group and gender were applied to total state and total county population estimates released by the Bureau of the Census on 4/26/2002 (<http://eire.census.gov/popest/estimates.php>)