

---

---

# **STATE OF ARIZONA SOCIAL SERVICES BLOCK GRANT PLAN 2009-2010**

---

---



**THE ARIZONA DEPARTMENT OF ECONOMIC SECURITY**

**EQUAL OPPORTUNITY EMPLOYER/PROGRAM  
FOR ALTERNATIVE FORMAT/REASONABLE ACCOMMODATIONS: (602) 542-3882**

Equal Opportunity Employer/Program ♦ Under Titles VI and VII of the Civil Rights Act of 1964 (Title VI & VII), and the Americans with Disabilities Act of 1990 (ADA), Section 504 of the Rehabilitation Act of 1973, and the Age Discrimination Act of 1975, the Department prohibits discrimination in admissions, programs, services, activities, or employment based on race, color, religion, sex, national origin, age, and disability. The Department must make a reasonable accommodation to allow a person with a disability to take part in a program, service or activity. For example, this means if necessary, the Department must provide sign language interpreters for people who are deaf, a wheelchair accessible location, or enlarged print materials. It also means that the Department will take any other reasonable action that allows you to take part in and understand a program or activity, including making reasonable changes to an activity. If you believe that you will not be able to understand or take part in a program or activity because of your disability, please let us know of your disability needs in advance if at all possible. To request this document in alternative format or for further information about this policy, contact (602) 542-3882; TTY/TDD Services: 7-1-1.

## TABLE OF CONTENTS

SUBJECT	PAGE
List of Figures.....	iv
Appendices.....	iv
Introduction.....	1
SSBG Planning Level .....	1
TANF Block Grant Funds Transferred to the SSBG.....	1
SSBG Service Goals.....	2
Evaluation.....	2
Reporting on Activities Funded .....	2
SSBG Planning Process.....	2
State Planned Services.....	3
Locally Planned Services.....	3
Arizona Tribal Entities .....	4
Geographic Areas .....	5
Financial Operations System .....	5
Proof of Audit.....	5
Public Comment and Review .....	5
Plan Amendment.....	8
Catalog of Services .....	8
Federal Uniform Definitions of Services Titles .....	8
Arizona Dictionary and Taxonomy of Human Services .....	9
Crosswalk for Federal SSBG Services to Arizona Taxonomy .....	19
Service Availability.....	23
Local and State Planned Levels .....	25
Target Group Definitions.....	25
Planned Expenditures – SFY 2010 .....	26

**LIST OF FIGURES**

<b>SUBJECT</b>	<b>PAGE</b>
<b>Figure 1: Title XX Geographic Areas (State map).....</b>	<b>6</b>
<b>Figure 2: DES Organization Chart.....</b>	<b>7</b>

**APPENDICES**

<b>SUBJECT</b>	<b>PAGE</b>
<b>Appendix A. Public Notice .....</b>	<b>59</b>
<b>Public Notice .....</b>	<b>60</b>
<b>Appendix B. Certifications.....</b>	<b>61</b>
<b>Certification Regarding Lobbying.....</b>	<b>62</b>
<b>Certification Regarding Drug-Free Workplace Requirements .....</b>	<b>63</b>
<b>Certification Regarding Debarment, Suspension And Other     Responsibility Matters.....</b>	<b>66</b>
<b>Certification Regarding Environmental Tobacco Smoke .....</b>	<b>69</b>

# STATE OF ARIZONA

## Title XX Social Services Block Grant Plan

July 1, 2009 – June 30, 2010

### **Introduction**

This document provides information on the types of activities supported and the categories or characteristics of individuals served under the provisions of the Omnibus Budget Reconciliation Act of 1981, Public Law 97-35, Subtitle C - Block Grants for Social Services, which amends Title XX of the Social Security Act. The Arizona Department of Economic Security (DES) under the statutory provisions of the law administers the Arizona Social Services Block Grant (SSBG) Plan (the Plan).

The program period covered corresponds to the State Fiscal Year 2010 (SFY 2010), which begins on July 1, 2009, and ends June 30, 2010. SFY 2010 overlaps portions of Federal Fiscal Year 2009 (FFY 2009) and FFY 2010, which run from October 1 through September 30.

### **SSBG Planning Level**

The specific formula used to estimate the amount of federal SSBG funds that are available for funding the planned services during Arizona's SFY 2010 is calculated from one-fourth of Arizona's FFY 2009 allocation and three-fourths of Arizona's estimated FFY 2010 allocation. Since the actual allotment available to Arizona is determined pursuant to Congressional and Presidential approval, the services and planning levels identified are estimates. The \$22,613,100 of TANF Block Grant funds transferred to the SFY 2010 SSBG is included in the Plan in addition to the SFY 2010 estimated funding level of \$35,527,187 for a total combined planning level of \$58,140,287.

The Plan spreadsheets immediately follow the narrative portion of the Plan. There are Plan spreadsheets for each of the DES Administrations/Divisions that plan to use SSBG funding for SFY 2010. The spreadsheets show the Services, Target Group(s), Status Eligibility, and Funding for each of the Locally Planned and State Planned SSBG services. This format allows the DES, local entities, and the U.S. Department of Health and Human Services (DHHS) to see the funds planned for SSBG.

### **TANF Block Grant Funds Transferred to the SSBG**

The 49th Legislature, First Regular Session HB 2643 (Chapter 12), Section 31 appropriated \$22,613,100 of Arizona's Temporary Assistance to Needy Families (TANF) block grant to be transferred to the SSBG for Children Services funding.

## **SSBG Service Goals**

The mission of the Arizona Department of Economic Security is to promote the safety, well-being, and self-sufficiency of children, adults, and families. Arizona's SSBG-funded services will be directed toward one or more of the following federal goals:

- I. Achieve or maintain economic self-support to prevent, reduce, or eliminate dependency.
- II. Achieve or maintain self-sufficiency, including reduction or prevention of dependency.
- III. Prevent or remedy neglect, abuse, or exploitation of children and adults unable to protect their own interests or preserving, rehabilitating, or reunifying families.
- IV. Prevent or reduce inappropriate institutional care by providing for community-based care, home-based care, or other forms of less intensive care.
- V. Secure referral or admission for institutional care when other forms of care are not appropriate or providing services to individuals in institutions.

The goals of DES and the five federal SSBG goals are very much aligned particularly in the areas of achieving or maintaining economic self-support to prevent, reduce, or eliminate dependency. The goals of DES are to: Strengthen individuals and families; Increase self-sufficiency; and Develop the capacity of communities. DES facilitates the efficient delivery of a broad array of services aimed at helping individuals and families make effective decisions to increase their safety, stability, and self-sufficiency.

## **Evaluation**

The appropriate administrations within DES contracting for services funded by the SSBG have the responsibility of monitoring and evaluating the social service programs funded by the SSBG.

## **Reporting on Activities Funded**

DES will prepare a report on activities carried out with funds allocated in the Plan. The report may be used to determine the extent to which funds were spent in a manner consistent with the Plan. The *Annual Report of Services Funded by the Social Services Block Grant for Fiscal Year 2009* will be available to the public after January 1, 2010. To obtain copies of this report, direct your request to the contact person at the telephone number or mailing address listed on page 5 of this Plan.

## **SSBG Planning Process**

DES is responsible for planning and developing the Plan. This includes providing technical assistance to local planning bodies and tribal entities for locally planned SSBG services. Planning for the use of the balance of available SSBG funds is accomplished as a part of the Department's annual budget development process.

## **State-Planned Services**

The DES Administrations/Divisions participating in Arizona's SSBG planning and reporting process are:

- Administration for Children, Youth and Families (ACYF)
- Child Care Administration (CCA)
- Office of Community Partnerships & Innovative Practices (CPIP)
- Division of Aging and Adult Services (DAAS)
- Division of Business and Finance (DBF) – Policy and Planning Administration (PPA)
- Division of Developmental Disabilities (DDD)
- Employment Administration (EA)
- Rehabilitation Services Administration (RSA)

These Administrations/Divisions within DES perform statewide planning activities by coordinating with similar and related programs of other state and local agencies, producing planning documents, fulfilling all federal statutory responsibilities accompanying the administration of programs, and involving local planning agencies in the development of a coordinated planning effort and review in local priorities for incorporation into statewide planning products.

## **Locally Planned Services**

A significant amount of SSBG services are provided primarily through local service-delivery systems contracted by DES to augment state services and to respond to local needs.

Arizona's six Councils of Governments (COGs) contract with DES to facilitate the primary planning for this portion of the SSBG service-delivery system. This primary planning is accomplished by identifying regional priorities, by coordinating planning with other planning entities, and by providing locally based citizen involvement opportunities. The following chart indicates the COGs' distribution of the allocation for locally planned services.

<b>COUNCILS OF GOVERNMENTS (COGs)</b>	<b>ALLOCATION</b>
Maricopa Association of Governments	\$4,090,579
Pima Association of Governments	1,551,134
Northern Arizona Council of Governments	431,451
Western Arizona Council of Governments	500,125
Central Arizona Association of Governments	453,099
SouthEastern Arizona Governments Organization	438,169
<b>TOTAL</b>	<b>\$7,464,557</b>

**Arizona Tribal Entities**

Tribal Nations within Arizona’s tribal entities have been established as separate SSBG Planning and Services areas. Technical assistance in planning and developing SSBG services is provided to tribes, upon request, by DES or by a private agency under a contract from DES. Eighteen of Arizona’s tribes have designated the Inter Tribal Council of Arizona (ITCA) to plan for their SSBG-funded services.

Each participating tribal entity is allocated the following share of the state's SSBG allocation that is based on each tribe's Arizona population.

<b><u>ITCA and TRIBES</u></b>	
<b>NAME of TRIBE</b>	<b>ALLOCATION</b>
Ak-Chin Indian Community	\$ 15,658
Cocopah Tribe	17,040
Colorado River Indian Tribes	26,097
Fort McDowell Yavapai Nation	16,257
Fort Mojave Tribe	19,179
Gila River Indian Community	95,425
Havasupai Tribe	16,453
Hopi Tribe	96,898
Hualapai Tribe	25,374
Kaibab-Paiute Tribe	13,735
Pascua Yaqui Tribe	25,607
Quechan Tribe	23,862
Salt River Pima-Maricopa Indian Community	30,744
San Carlos Apache Tribe	92,593
San Juan Southern Paiute	12,086
Tonto Apache Tribe	13,205
White Mountain Apache Tribe	115,574
Yavapai-Apache Nation	21,397
<b>Total ITCA Services (Aging and Adult)</b>	<b>\$ 677,184</b>
<b>ITCA Planning</b>	<b>\$ 64,343</b>
<b>Tohono O’Odham (Child Care)</b>	<b>120,644</b>
<b>Navajo (Children’s Services)</b>	<b>1,242,896</b>
<b>Gila River (Children’s Services)</b>	<b>18,417</b>
<b>TOTALS</b>	<b>\$2,123,484</b>

ITCA planned services may be contracted with each tribal government for the amount shown. Specific services, eligibility criteria, and dollar amounts are determined during the contracting process and are not designated in this Plan.

## **Geographic Areas**

The geographic areas for which services are planned are identified on the map on page 6. These service-planning districts correspond to DES service districts, excluding Arizona's Tribal Nations.

## **Financial Operations System**

Arizona uses a federally approved cost allocation plan. DES is responsible for administering a wide variety and large quantity of grants and therefore utilizes multiple methods to assign costs. Indirect costs are typically assigned using modified total direct cost methodology. Other methods of assigning costs include Random Moment Samples, caseload counts, population factors, square footage, and time studies.

## **Proof of Audit**

In accordance with 42 U.S.C. 1397e, the Single Audit Report for year ending June 30, 2008 was performed by the State of Arizona Auditor General's office and submitted to the Arizona State Legislature May 26, 2009.

## **Public Comment and Review**

The proposed Arizona State Fiscal Year 2010 SSBG Plan was made available to the public and local community and tribal social services planning agencies for review. Public notices were posted and the Department held public hearings at the six DES District offices throughout the state in June and July 2009. Please refer to Appendix A for a copy of the public hearings notice and schedules. All interested persons were afforded an opportunity to provide written comments on the proposed plan to the SSBG Community Planning Coordinator by close of business on July 14, 2009 at the address listed below:

Arizona Department of Economic Security  
Marianne Eichinger, SSBG Community Planning Coordinator  
Policy and Planning Administration  
1789 West Jefferson Street - Mail Site Code 837A  
Phoenix, Arizona 85007  
Telephone: (602) 542-6159  
E-mail: [Meichinger@azdes.gov](mailto:Meichinger@azdes.gov)

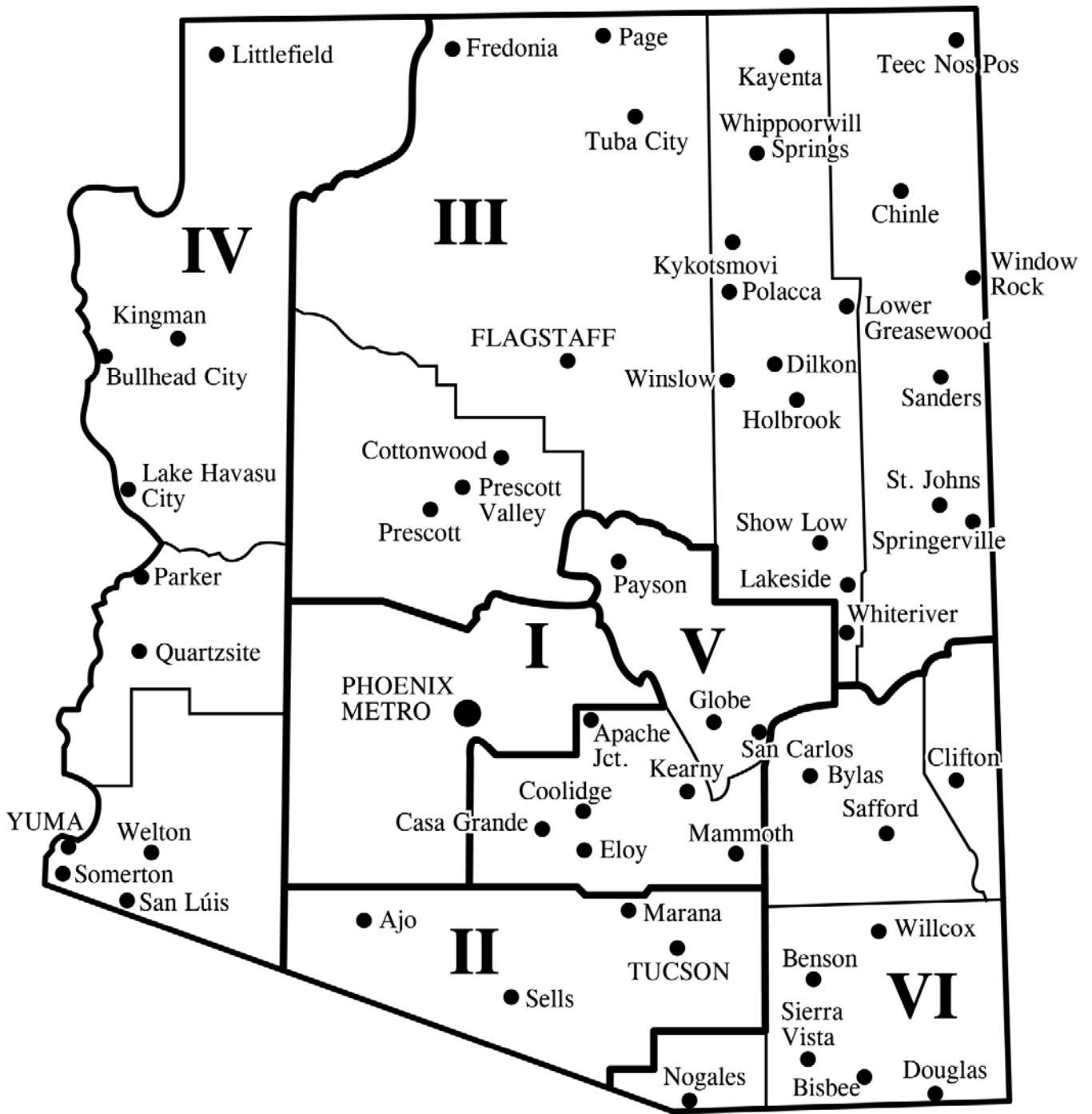


Figure 1: Title XX Geographic Areas (State map)

# Arizona Department of Economic Security

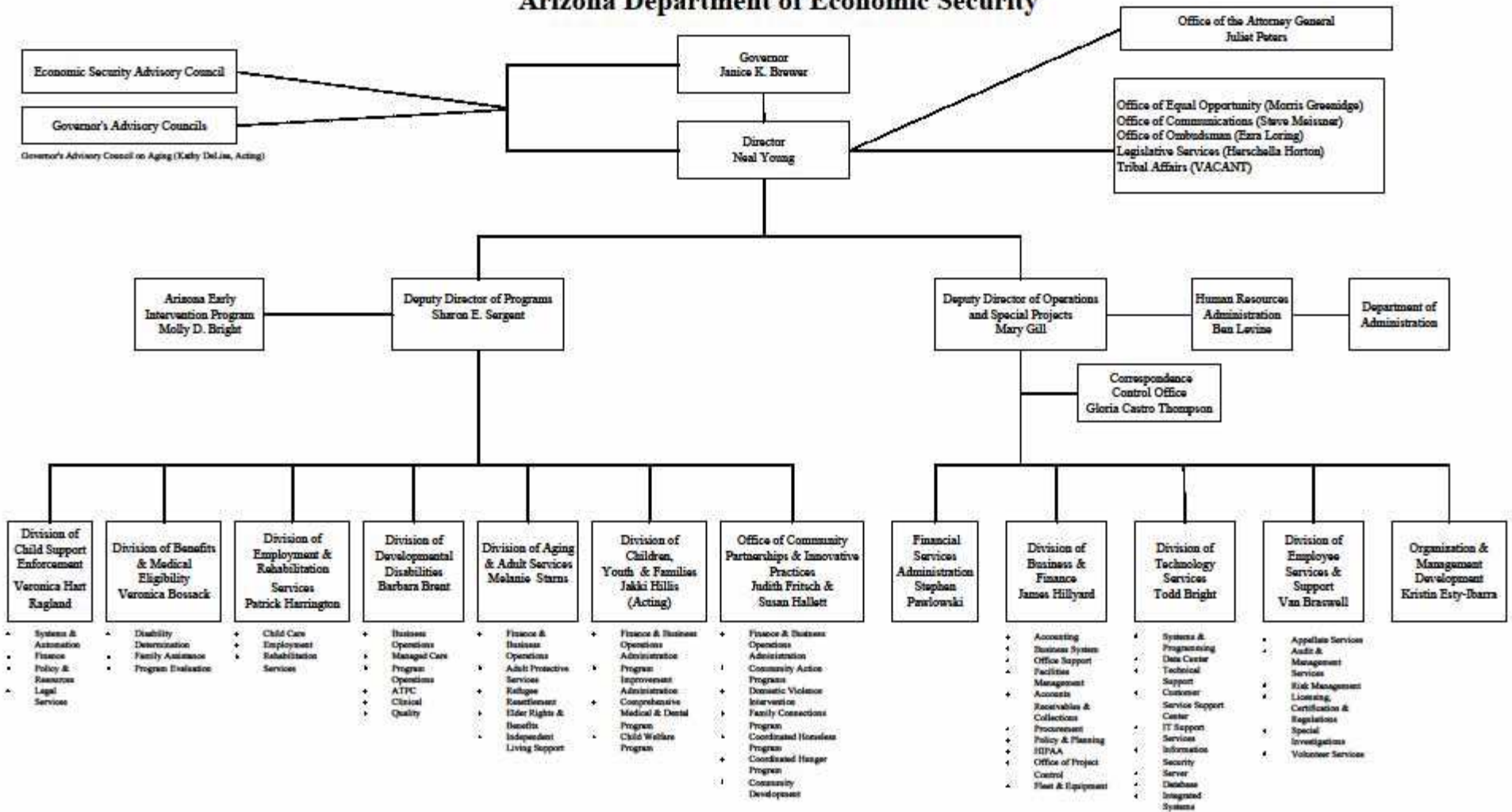


Figure 2: DES Organizational Chart

## **Plan Amendment**

The Plan may be revised throughout the year as necessary to reflect substantial changes in the activities provided that affect the overall intent of the Plan. Any substantive revisions will be made available for public review and comment from interested persons and federal and public agencies.

Service needs and program decisions may make it necessary to add services or make changes in eligibility, geographic and service availability, or the target group to which the service may be directed. These changes may be made in the Department's contracting process or direct service-delivery process without modifying the Plan.

## **Catalog of Services**

This section identifies the services that may be funded under terms of the Title XX, SSBG. The services are defined as follows:

- The *Federal Uniform Definitions of Services* is a listing of the twenty-nine titles and definitions of services that are required to be used for the purpose of reporting SSBG expenditures to the Federal Government annually. These services are defined in Title 45, Part 96, Appendix A of the Code of Federal Regulations. The twenty-nine titles are listed below.
- Services listed in the *Arizona Dictionary and Taxonomy of Human Services* are provided by DES or through purchase-of-service agreements with local community service providers.
- The *Crosswalk for Federal SSBG Services to the Arizona Dictionary and Taxonomy for Human Services* provides a listing of the Federal Service Titles and the corresponding Arizona Taxonomy Service Titles.

---

### **Federal Uniform Definitions of Services Titles**

1. Adoption Services	17. Information and Referral
2. Case Management Services	18. Legal Services
3. Congregate Meals	19. Pregnancy and Parenting Services for Young Parents
4. Counseling Services	20. Prevention and Intervention Services
5. Day Care Services - Adults	21. Protective Services for Adults
6. Day Care Services - Children	22. Protective Services for Children
7. Education and Training Services	23. Recreational Services
8. Employment Services	24. Residential Treatment Services
9. Family Planning Services	25. Special Services for Persons with Developmental or Physical Disabilities
10. Foster Care Services for Adults	26. Special Services for Youth Involved In or At Risk of Involvement With Criminal Activity
11. Foster Care Services for Children	27. Substance Abuse Services
12. Health Related and Home Health Services	28. Transportation Services
13. Home Based Services	29. Other Services
14. Home Delivered Meals	
15. Housing Services	
16. Independent and Transitional Living Services	

## Arizona Dictionary and Taxonomy of Human Services

- **Adaptive Aids and Devices**  
A service that provides or fabricates specialized equipment that will assist persons in performing normal living skills, and any necessary installation, fitting, adjustment, and training.
- **Adaptive Aids and Devices – Repair/Modification**  
A service that repairs or modifies aids and devices that assist persons in performing normal living skills.
- **Administrative Services**  
Services that enable the effective administration and receipt of services.
- **Adoption**  
A service that provides for the certification of a family, support services to the family after a child is placed and supervision of the family until the child’s adoption is finalized.
- **Adoption Services**  
Services that provide for the selection of a family, placement and supervision of a child until an adoption is finalized.
- **Adoption Subsidy**  
A service that provides payments for special services and/or maintenance for children who might otherwise not be adopted.
- **Adult Day Care/Adult Day Health Care**  
A service that provides supervised planned care and health-related services to adults in a group setting during a portion of a 24-hour day.
- **Adult Foster Care**  
A service that provides residential care and supervision of one to four adults in a family setting.
- **Advocacy**  
Services that take action to protect the rights of individuals and ensure they receive appropriate services and benefits or to seek needed changes in the law and/or administrative rules to protect the rights of individuals and ensure adequate service levels.
- **Alternative Communication Training**  
A service that provides for a specific curriculum that creates an opportunity for competency in recognized and accepted non-verbal medium.
- **Alternative Residential Services**  
An alternative setting to an individual’s own home that is licensed or certified to provide one or more of the following: room and board, health care, health related services, behavioral health services, and/or habilitation for residents on a continuing basis. The setting is not a licensed nursing care institution.

## Arizona Dictionary and Taxonomy of Human Services

- **Assessment/Evaluation**  
Services that provide an evaluation to identify and analyze problems, needs and/or assets and may recommend corrective action and/or treatment.
- **Attendant Care/Personal Assistance**  
A service that provides a qualified individual to supply needed services in order for an individual to remain in his/her home and/or participate in work/community activities.
- **Basic Education**  
A service that provides instruction in educational areas necessary for an individual to function effectively.
- **Behavioral Therapeutic Activities**  
A service that provides therapeutic activities to persons and/or their families in a home, school, preschool, after school, nursery/day care, or other residential or non-office setting. (The Department of Health Services presently calls this service In Home and Community.)
- **Case Management**  
A service or process that establishes a relationship with an individual or family in order to enhance their functioning and/or integration into the community. Appropriate services and/or benefits are identified, planned, obtained, provided, recorded, monitored, modified when necessary and/or terminated. This may include: assessment to determine their needs and eligibility when applying for/receiving services, assistance in finding necessary resources in addition to covered services to meet basic needs, assistance in obtaining entitlements, communication and coordination of care as well as follow-up of crisis contacts or missed appointments.
- **Child Care**  
A service that provides supervised planned care for children during a portion of a 24-hour day.
- **Child Foster Care**  
A service that provides family home care and supervision to child(ren) on a 24-hour/day basis.
- **Child Support**  
Services that locate absent parents, establish paternity, establish child support obligation, and collect and distribute child/spousal support.
- **Chore**  
A service that provides for heavy indoor cleaning and may include designated outdoor tasks.
- **Client Access, Education and Information**  
A service that provides education, information and assistance to individuals and groups regarding the availability of, and accessibility to, human services.

## Arizona Dictionary and Taxonomy of Human Services

- **Community Education and Information**  
A service that provides information on, and/or instructions in, various subjects through public contact and/or meetings, printed materials and media presentations focused on a particular subject, field of interest, agency or service(s).
- **Community Services**  
Services that provide a range of activities that have a measurable and major impact on causes of poverty.
- **Companion Services**  
A service that provides companions and supportive services to individuals with special needs.
- **Comprehensive Service Delivery**  
Services that provide two or more of the following services that assist individuals in accessing or receiving services: Protective Services, Counseling, Home Care, Home Management Training, Reassurance, Home Repair/Adaptation/Renovation, Transportation, Parent Aide Service and Case Management.
- **Comprehensive Youth Development**  
A service that mobilizes volunteers who are adults to carry out programs that develop the personal fitness and character of youth.
- **Congregate Meals**  
A service that provides for a nutritious meal containing at least 1/3 of the Recommended Dietary Allowance for an individual in a congregate setting.
- **Consultation**  
A service that provides professional information and advice to assist in planning, developing, implementing and evaluating individual and service programs and in providing coordination with the professional community.
- **Coordination**  
A service that promotes efficiency through the cooperation and collaboration of multiple entities concerned with the same issue or need.
- **Counseling/Intervention**  
Services that provide for a wide range of personal, interpersonal, situational, and functional guidance.
- **Crisis Shelter Services**  
Services that provide assistance to abused individuals or families. Services include, but are not limited to both the shelter and counseling.

## Arizona Dictionary and Taxonomy of Human Services

- **Day Care**  
Services that provide for, and support the provision of, supervised planned care during a portion of a 24-hour day.
- **Day Treatment and Training**  
Services that provide training, supervision, therapeutic activities and as appropriate, counseling, to promote skill development in independent living, self care, communication, and social relationships.
- **Developmental Day Training**  
A service that provides specialized sensorimotor, cognitive, communicative, social, interaction, and behavioral training for some portion of a 24-hour day.
- **Developmental Disability Day Care**  
A service that provides supervised planned care, daily living skills training, and habilitation services in a group setting during a portion of a 24-hour day.
- **Drug Abuse Counseling**  
A service that provides an individual an opportunity to learn the effects of drug abuse and counsels the person on alternative life style habits.
- **Eligibility Determination**  
A service that provides a decision that an individual or household is or is not qualified for services or benefits.
- **Emergency Human Services**  
Services that respond to crises-related situations where there is an inability to provide for the basic needs. Services may include, but are not limited to: case management, financial and referral.
- **Emergency Shelter**  
A service that provides immediate shelter to persons who are without shelter or a fixed place of residence. Emergency shelter may usually be provided for a period of up to 120 days.
- **Employment Related Services**  
Services that provide outreach, intake, eligibility, placement and follow-up activities in support of obtaining employment. Services may include, but are not limited to: occupational/vocational education, assessment, basic education, work experience, counseling, case management, job development and placement, work adjustment training, supported employment, supported employment extended, work exploration, and pre-vocational training.
- **Employment Services**  
Services that provide activities and assistance in support of finding, entering or retaining a job for individuals or groups.

## Arizona Dictionary and Taxonomy of Human Services

- **Exemplary Youth Work Program**  
Services that provide various employment-related training activities for youth. Services may include, but are not limited to: occupational/vocational education, assessment, basic education, work experience, counseling, case management, and job placement.
- **Family Planning**  
A service that provides assistance to individuals to voluntarily implement plans to determine the number and spacing of children.
- **Food Administration**  
A service that provides for the storage, handling, and distribution of food products.
- **General Transportation**  
A service that provides or assists in obtaining various types of transportation for specific needs.
- **Group Home Care**  
A licensed facility for the 24-hour care and supervision of individuals.
- **Habilitation Services**  
Services that provide a variety of interventions designed to maximize the functioning of persons with developmental disabilities. Services may include, but are not limited to: habilitative therapies, special developmental skills, behavior intervention, and sensorimotor development.
- **Home Care**  
Services that provide individuals who are at risk of institutionalization with coordinated in-home support needed to remain at home. Services may include, but are not limited to: attendant care/personal assistance, housekeeping/homemaker, chore, home health aid, personal care, respite, and nursing services.
- **Home Delivered Meals**  
A service that provides for a nutritious meal containing at least 1/3 of the Recommended Dietary Allowance for an individual, delivered to his/her place of residence.
- **Home Health Aid**  
A service that provides intermittent health maintenance continued treatment or monitoring of a health condition and supportive care for activities of daily living at the individual's place of residence.
- **Home Management Skills Training**  
A service that provides training in activities related to routine household maintenance.
- **Home Recruitment and Study**  
A service that identifies families for either permanent placements or to provide child care services, conducts training to families and prepares the home study for licensure/certification.

## Arizona Dictionary and Taxonomy of Human Services

- **Home Repair/Renovation**  
A service that provides for safety and/or structural repairs to the home.
- **Hospice**  
A service that provides health care and emotional support to terminally ill individuals and their families/caregivers during the final stages of life.
- **Housekeeping/Homemaker**  
A service that provides assistance in the performance of routine household activities at an individual's place of residence.
- **Housing Search and Relocation**  
A service that provides assistance toward locating suitable housing.
- **Independent Living**  
A service that provides for individuals living independently and possessing the skills necessary to function at a minimum level of self-sufficiency.
- **Independent Living Skills**  
A service that provides interpersonal and daily living skills training and counseling to prepare individuals for independent living.
- **Information and Referral**  
A service that provides or arranges for assistance to individuals to enable them to gain access to services through the provision of accurate and current information and referral to appropriate resources. Referral may involve short-term supportive assistance and follow-up.
- **In-Home Family Support**  
Services that provide coordinated support services that will assist the family to remain intact or an individual to remain in his/her home.
- **Intensive Family Preservation and Reunification Services**  
Services that provide intensive crisis-oriented activities to families whose children are at significant risk of out-of-home placement due to abuse and/or neglect in order to allow those children to safely remain in their own home. Services may include, but are not limited to: counseling, communication and negotiation skills, parenting skills training, home management skills, job readiness training, case management, and development of linkages to community resources.
- **Interpreter**  
A service that provides a person or equipment to facilitate communication.
- **Job Development and Placement**  
A service that provides assistance in obtaining employment for job-ready individuals.

## Arizona Dictionary and Taxonomy of Human Services

- **Job Training**  
A service that develops specific vocational skills.
- **Legal Assistance**  
A service that provides consultation and representation of civil and legal matters.
- **Legal Services**  
Services that provide for consultation and information based on law.
- **Mental Health Education**  
A service that provides instruction utilizing a positive life style as the medium of instruction.
- **Monitoring**  
A service that checks and keeps track of contractor compliance with state, federal and contractual regulations, rules and conditions.
- **Nursing**  
A service that provides nursing intervention that may include patient care, coordination facilitation and education.
- **Nutrition Education**  
A service that provides individual or group instruction about food to maintain or improve development.
- **Occupational Therapy**  
A service that directs the individual's participation in selected activities to restore, maintain or improve functional skills.
- **Occupational/Vocational Education**  
A service that provides instruction and/or skills training in technical, business and other trade areas. Training may be provided in a classroom or actual job setting.
- **Orientation and Mobility Training**  
A service that provides skills training that assists a person in safely navigating an identified environment.
- **Outreach**  
A service that provides a systematic method to identify and directly contact persons in need of services.
- **Parent Aide Service**  
A service that provides a range of support services instruction and assistance to parents or caregivers to improve their skills and ability to fulfill parenting roles and responsibilities.
- **Parenting Skills Training**  
A service that provides training that promotes specific parent or caregiver skills.

## Arizona Dictionary and Taxonomy of Human Services

- **Peer Counseling**  
A service that provides self-help opportunities.
- **Personal Care**  
A service that provides assistance with personal physical needs.
- **Personal Escort**  
A service that provides an escort who transports and assists an individual to perform necessary errands away from the residence.
- **Personal Living Skills Training**  
A service that provides training that promotes specific self-care skills.
- **Physical Therapy**  
A service that provides treatment to restore, maintain or improve a physical function.
- **Planning**  
A service that identifies and analyzes priority needs, explores options, establishes goals, and develops a course of action that will bring about a desired condition or event at some specific time in the future.
- **Prevention**  
Services that provide for planned efforts to prevent specific conditions, illnesses, injuries or environmental hazards that could place an individual, group or community at risk for a negative social, physical, behavioral or health outcome.
- **Prevocational Training**  
A service that provides sensorimotor, cognitive, communicative, social interaction, and behavioral training necessary for vocational activities.
- **Professional Family Foster Care**  
Services that provide in a family-based home, care and supervision of a child on a 24-hour basis and include specialized care and support services, which are the responsibility of the licensee who serves as the foster parent.
- **Professional Specialty**  
A service that allows for the provision of services not otherwise identified separately in this Arizona Dictionary and Taxonomy of Human Services that requires special expertise, knowledge or credentials in a given area.
- **Program Administration**  
A service that distributes and administers funds received for programs.
- **Program Development**  
A service that researches and/or establishes a new service(s); improves, expands, or integrates an existing service(s).

## Arizona Dictionary and Taxonomy of Human Services

- **Program Evaluation**  
A service that assesses systematically the impact and/or efficiency of programs.
- **Protective Services**  
Services that provide support to individuals who are in abusive, self-neglect, or vulnerable situations. Services may include, but are not restricted to: financial, shelter, legal, counseling, information, and referral and follow-up.
- **Reassurance**  
A service that provides a regular contact system for individuals restricted to their place of residence.
- **Rehabilitation Instructional Services**  
Services that provide training in community living skills and activities directed toward personal and social adjustment.
- **Relinquishment and Severance**  
A service that assists biological and/or legal parents in the decision and/or process of relinquishment or termination of their rights as parents.
- **Residential Living and Development**  
Services that provide for varying degrees of residential care, supervision, counseling, and training in activities of daily living.
- **Respiratory Therapy**  
A service that provides treatment to restore, maintain, or improve breathing.
- **Respite**  
Services that provide different types of respite.
- **Respite Care**  
A service that provides short-term care and supervision consistent with the health needs of the person to supplement care to provide a safe living environment and/or to support or relieve caregivers for the benefit of the person.
- **Self-Help Group**  
A service that provides peer intervention in a group setting.
- **Shelter**  
Services that provide for care, refuge, and protection.
- **Sheltered Employment**  
A service that provides a controlled and protected work environment, additional supervision, and other supports for individuals engaged in remunerative work either in a sheltered workshop or in the community.

## Arizona Dictionary and Taxonomy of Human Services

- **Social Adjustment**  
A service that instructs multiple domains of a person's life for improved functioning.
- **Social Development**  
Services that provide structure and instruction, designed to promote improved social functioning.
- **Socialization and Recreation**  
A service that promotes mentally and emotionally healthy interaction between participants and that may be organized around leisure activities.
- **Speech Therapy**  
A service that provides evaluations, program recommendations, and/or treatment/training in receptive and expressive language, voice, articulation, and fluency.
- **Staff Development and Training**  
A service that provides an organized method of improving needed staff skills.
- **Substance Abuse Assessment**  
A service that provides for the assessment of an individual to determine substance abuse and dependence and recommend interventions and treatment.
- **Substance Abuse Screening**  
A service that provides for the screening of an individual to determine the presence of alcohol or drug abuse. (Note: For testing, reference Clinical Laboratory Service.)
- **Supervised Employment**  
Services that provide for training in an area of employment under guidance of a trained supervisor.
- **Supported Employment**  
A service that provides job development, assistance in matching the individual with an integrated competitive job, and intensive time-limited supports to an employed individual once placed.
- **Supported Employment, Extended**  
A service that provides long-term, on-going support services for an employed individual.
- **Supportive Intervention/Guidance Counseling**  
A service that provides supportive intervention and/or guidance.
- **Transitional Housing**  
A service that provides long-term shelter for a period of up to two years to homeless persons, who are sufficiently stabilized to pursue some level of self-sufficiency, but may require additional supportive services. The goal of this service is to facilitate movement to permanent housing.

**Arizona Dictionary and Taxonomy of Human Services**

- **Transitional Shelter**  
A service that provides short-term care.
  
- **Transportation**  
Services that promote or provide mobility.
  
- **Unaccompanied Minors Service**  
A service that provides foster care provisions for refugee minors who are in the United States without a qualified parent or legal guardian.
  
- **Utility Assistance**  
A service that provides financial and/or non-financial aid to meet residential public service needs.
  
- **Volunteer Services**  
A service that provides coordination of volunteer activities.
  
- **Work Adjustment Training**  
A service that provides training in the meaning, value and demands of work and in the development of positive attitudes toward work.
  
- **Work Experience**  
A service that provides work situations and support services to foster and promote the transition to employment.

<b><u>Crosswalk for Federal SSBG Services to the Arizona Dictionary and Taxonomy of Human Services</u></b>	
<b>SSBG Services for Federal Reporting Requirements</b>	<b>Arizona Taxonomy Services Approved for SSBG Funding</b>
1. Adoption Services	<ul style="list-style-type: none"> <li>• Adoption</li> <li>• Adoption Services</li> <li>• Adoption Subsidy</li> <li>• Relinquishment and Severance</li> </ul>
2. Case Management Services	<ul style="list-style-type: none"> <li>• Case Management</li> <li>• Coordination</li> <li>• Eligibility Determination</li> <li>• Emergency Human Services</li> </ul>
3. Congregate Meals	<ul style="list-style-type: none"> <li>• Congregate Meals</li> </ul>

**Crosswalk for Federal SSBG Services to the  
Arizona Dictionary and Taxonomy of Human Services**

4. Counseling Services	<ul style="list-style-type: none"> <li>• Assessment/Evaluation</li> <li>• Counseling/Intervention</li> <li>• Professional Specialty</li> <li>• Supportive Intervention/Guidance Counseling</li> </ul>
5. Day Care Services-Adults	<ul style="list-style-type: none"> <li>• Adult Day Care/Adult Day Health Care</li> <li>• Companion Services</li> <li>• Day Treatment and Training</li> <li>• Developmental Day Training</li> <li>• Monitoring</li> </ul>
6. Day Care Services-Children	<ul style="list-style-type: none"> <li>• Child Care</li> <li>• Day Treatment and Training</li> <li>• Developmental Day Training</li> <li>• Home Recruitment and Study</li> <li>• Monitoring</li> </ul>
7. Education and Training Services	<ul style="list-style-type: none"> <li>• Alternative Communication Training</li> <li>• Basic Education</li> <li>• Interpreter</li> </ul>
8. Employment Services	<ul style="list-style-type: none"> <li>• Adaptive Aids and Devices</li> <li>• Adaptive Aids and Devices – Repair/Modification</li> <li>• Assessment /Evaluation</li> <li>• Employment Related Services</li> <li>• Exemplary Youth Work Program</li> <li>• Job Development and Placement</li> <li>• Job Training</li> <li>• Occupational/Vocational Education</li> <li>• Prevocational Training</li> <li>• Sheltered Employment</li> <li>• Supported Employment</li> <li>• Supported Employment, Extended</li> <li>• Work Adjustment Training</li> <li>• Work Experience</li> </ul>
9. Family Planning Services	<ul style="list-style-type: none"> <li>• Family Planning</li> </ul>
10. Foster Care Services for Adults	<ul style="list-style-type: none"> <li>• Adult Foster Care</li> <li>• Home Recruitment and Study</li> </ul>
11. Foster Care Services for Children	<ul style="list-style-type: none"> <li>• Child Foster Care</li> <li>• Home Recruitment and Study</li> <li>• Monitoring</li> <li>• Professional Family Foster Care</li> </ul>

**Crosswalk for Federal SSBG Services to the  
Arizona Dictionary and Taxonomy of Human Services**

12. Health Related and Home Health Services	<ul style="list-style-type: none"> <li>• Home Health Aid</li> <li>• Hospice</li> </ul>
13. Home Based Services	<ul style="list-style-type: none"> <li>• Administrative Services</li> <li>• Attendant Care/Personal Assistance</li> <li>• Community Services</li> <li>• Home Care</li> <li>• Housekeeping /Homemaker</li> <li>• Orientation and Mobility Training</li> <li>• Parent Aid Service</li> <li>• Personal Care</li> <li>• Personal Living Skills Training</li> <li>• Reassurance</li> <li>• Rehabilitation Instructional Services</li> <li>• Respite</li> </ul>
14. Home Delivered Meals	<ul style="list-style-type: none"> <li>• Home Delivered Meals</li> </ul>
15. Housing Services	<ul style="list-style-type: none"> <li>• Emergency Shelter</li> <li>• Home Repair/Renovation</li> <li>• Housing Search and Relocation</li> <li>• Shelter</li> <li>• Transitional Housing</li> </ul>
16. Independent and Transitional Living Services	<ul style="list-style-type: none"> <li>• Independent Living Skills</li> <li>• Unaccompanied Minors Service</li> </ul>
17. Information and Referral	<ul style="list-style-type: none"> <li>• Client Access, Education and Information</li> <li>• Community Education and Information</li> <li>• Coordination</li> <li>• Information and Referral</li> <li>• Outreach</li> <li>• Volunteer Services</li> </ul>
18. Legal Services	<ul style="list-style-type: none"> <li>• Legal Assistance</li> </ul>
19. Pregnancy and Parenting Services For Young Parents	<ul style="list-style-type: none"> <li>• Community Education and Information</li> <li>• Parenting Skills Training</li> </ul>
20. Prevention and Intervention Services	<ul style="list-style-type: none"> <li>• Advocacy</li> <li>• Behavioral Therapeutic Activities</li> <li>• Comprehensive Service Delivery</li> <li>• Comprehensive Youth Development</li> </ul>

**Crosswalk for Federal SSBG Services to the  
Arizona Dictionary and Taxonomy of Human Services**

<p>20. Prevention and Intervention Services (<i>Cont'd</i>)</p>	<ul style="list-style-type: none"> <li>• Counseling/Intervention</li> <li>• Crisis Shelter Services</li> <li>• Emergency Shelter</li> <li>• In-Home Family Support</li> <li>• Intensive Family Preservation and Reunification Services</li> <li>• Parent Aide Service</li> <li>• Peer Counseling</li> <li>• Supportive Intervention/Guidance Counseling</li> <li>• Transitional Shelter</li> </ul>
<p>21. Protective Services for Adults</p>	<ul style="list-style-type: none"> <li>• Emergency Human Services</li> <li>• Protective Services</li> </ul>
<p>22. Protective Services for Children</p>	<ul style="list-style-type: none"> <li>• Emergency Human Services</li> <li>• Protective Services</li> </ul>
<p>23. Recreational Services</p>	<ul style="list-style-type: none"> <li>• Comprehensive Youth Development</li> <li>• Social Adjustment</li> <li>• Socialization and Recreation</li> </ul>
<p>24. Residential Treatment Services</p>	<ul style="list-style-type: none"> <li>• (Not a DES service)</li> </ul>
<p>25. Special Services for Persons With Developmental or Physical Disabilities</p>	<ul style="list-style-type: none"> <li>• Adaptive Aids and Devices</li> <li>• Adaptive Aids and Devices – Repair/Modification</li> <li>• Alternative Communication Training</li> <li>• Attendant Care/Personal Assistance</li> <li>• Day Treatment and Training</li> <li>• Developmental Day Training</li> <li>• Developmental Disability Day Care</li> <li>• Employment Services</li> <li>• Employment Related Services</li> <li>• Habilitation Services</li> <li>• Home Management Skills Training</li> <li>• Housekeeping/Homemaker</li> <li>• Independent Living</li> <li>• Interpreter</li> <li>• Job Training</li> <li>• Occupational Therapy</li> <li>• Personal Living Skills Training</li> <li>• Physical Therapy</li> </ul>

**Crosswalk for Federal SSBG Services to the  
Arizona Dictionary and Taxonomy of Human Services**

25. Special Services for Persons With Developmental or Physical Disabilities ( <i>Cont'd</i> )	<ul style="list-style-type: none"> <li>• Rehabilitation Instructional Services</li> <li>• Respite</li> <li>• Sheltered Employment</li> <li>• Socialization and Recreation</li> <li>• Speech Therapy</li> <li>• Supported Employment</li> <li>• Supported Employment, Extended</li> <li>• Transportation</li> </ul>
26. Special Services For Youth Involved in or at Risk of Involvement with Criminal Activity	<ul style="list-style-type: none"> <li>• Prevention</li> </ul>
27. Substance Abuse Services	<ul style="list-style-type: none"> <li>• Assessment/Evaluation</li> <li>• Case Management</li> </ul>
28. Transportation Services	<ul style="list-style-type: none"> <li>• Personal Escort</li> <li>• Transportation</li> </ul>
29. Other Services	<ul style="list-style-type: none"> <li>• Program Administration</li> <li>• Program Occupancy</li> </ul>

*\*SSBG funds may not be used for direct monetary payments to SSBG clients, purchase of land, build buildings, public school system, and professional medical care. However, there are exceptions that allow the use of SSBG funds for some of these items under certain circumstances.*

**Service Availability**

The Services, Target Group Eligibility, and Status Eligibility sections are identified below and provide the primary basis for determining eligibility for service. In addition to these areas, service availability will be determined on the basis of programmatic need for service. More specific service availability criteria may be specified in the purchase-of-service contracts with provider agencies. An individual who is determined to be eligible under the above criteria shall not be denied access to services because of any other condition, although providers may use waiting lists and/or set priorities for services based on level of need for the service.

**A. Services**

This column lists the services available in the geographic area. Eligibility for service may vary from one geographic area to another, and services may only be available in certain areas of the state. Some services may be identified as being available on a statewide basis.

## **B. Target Group Eligibility**

This column identifies the types of individuals eligible for service. The most common target groups identified are adults, children, elderly, persons with disabilities, developmentally disabled, and adults/families/children. The definitions of these target groups are identified on page 25. Combinations of target groups may be identified (e.g., elderly persons with disabilities would be designated as "ELD/PWD"). Also, there may be characteristics added to the target groups (e.g., ELD/PWD/Blind) that further clarify availability of service.

## **C. Status Eligibility**

This column identifies the financial category for which individuals must qualify in order to be eligible for service. Arizona does not require a means test for SSBG-funded services. Children and their families who receive services that are funded with TANF funds transferred to the SSBG must have incomes less than 200 percent of the federal poverty level.

- 1. Income Eligibility TANF/SSBG Funds** - Services funded by TANF are restricted, transferred funds to SSBG as required by 42 U.S.C. Part A, Title IV, Sec. 404, (d) (3) (B), which reads:

EXCEPTION RELATING TO TITLE XX PROGRAMS. All amounts paid to a State under this part that are used to carry out State programs pursuant to Title XX shall be used only to carry out programs and services to children and their families whose income is less than 200 percent of the income official poverty line (as defined by the Office of Management and Budget, revised annually...Act of 1981) applicable to a family of the size involved.

- 2. Income Eligibility Child Care** - The Child Care Administration provides child care assistance to support working families with incomes at or below 165 percent of the federal poverty level. Working families whose incomes are at or below 100 percent of the federal poverty level and working families that are transitioning off of cash assistance with incomes at or below 165 percent of the federal poverty level receive priority status for services. Families referred by Child Protective Services (CPS), children receiving CPS foster care, and families who are receiving cash assistance and are participating in the Employment Administration-Jobs program and/or who are employed receive services without regard to income.
- 3. Group** - All individuals within a specific target group are financially eligible.
- 4. Unemployed** - Service availability is determined on an individual's employment status. Financial income status levels may also be applied. The specific eligibility criteria shall be identified in the contract document with purchase-of-service providers.
- 5. Homeless** - Individuals who have been evicted from a residence, who are residing in an emergency shelter, or who are without a regular nighttime residence and who are without family or friends that are able or willing to share their residence.

## **Local and State-Planned Levels**

These columns represent estimates of the federal dollars that may be utilized for the delivery of the services.

## **Target Group Definitions**

1. **Adults** (AD) - Any individual 18 years of age or older.
2. **Children** (CH) - Any individual under the age of 18.
3. **Developmentally Disabled Individuals** (DD) - Any individual having a severe, chronic disability attributable to a cognitive disability, cerebral palsy, epilepsy or autism, and which manifested itself before age 18, is likely to continue indefinitely and results in substantial functional limitations in three or more areas of the major life activities; and reflects the need for a combination and sequence of special, interdisciplinary or generic care, treatment, or other services, which are of lifelong or extended duration and are individually planned or coordinated.
  - "Major life activities" for the purpose of this definition are: (1) self-care; (2) receptive and expressive language; (3) learning; (4) mobility; (5) self-direction; (6) capacity for independent living; and (7) economic self-sufficiency.
4. **Elderly** (ELD) - Any individual 60 years of age or older.
5. **Persons with Disabilities** (PWD) - Any individual who has a physical or mental impairment that substantially limits one or more major life activities and has a diagnosis of such impairment.
  - "Physical or Mental Impairment" includes physiological conditions, cosmetic disfigurements, anatomical losses or mental disorders.
  - "Diagnosis" means diagnosed or classified as having a physical or mental impairment by a doctor of medicine, a doctor of osteopathy or a psychologist certified by either the Arizona State Board of Psychologist Examiners or the Department of Education.
  - "Major life activities" for the purpose of this definition are: (1) self-care; (2) receptive and expressive language; (3) learning; (4) mobility; (5) self-direction; (6) capacity for independent living; and (7) economic self-sufficiency.
6. **Adults/Families/Children** (AFC) - Any individual or family.

**ADMINISTRATION FOR CHILDREN, YOUTH, AND FAMILIES (ACYF)  
SFY 2010**

<b>DISTRICT I (MARICOPA COUNTY)</b>					
<b>SERVICES</b>	<b>TARGET GROUP</b>	<b>STATUS ELIG.</b>	<b>LOCAL PLANNED</b>	<b>STATE PLANNED</b>	<b>LOCAL &amp; STATE TOTAL</b>
Case Management	Pregnancy/ Parenting Youth	Group	\$ 38,537	\$ -	\$ 38,537
Counseling/Intervention	AFC	Group	\$ -	\$ 183,484	\$ 183,484
Supportive Intervention/Guidance Counseling	Children At High Risk	Group	\$ 47,021	\$ -	\$ 47,021
Crisis Shelter Services	Children And Runaway Children	Group	\$ 69,676	\$ 8,916	\$ 78,592
<b>DISTRICT I TOTALS</b>			<b>\$ 155,234</b>	<b>\$ 192,400</b>	<b>\$ 347,634</b>

<b>DISTRICT II (PIMA COUNTY)</b>					
<b>SERVICES</b>	<b>TARGET GROUP</b>	<b>STATUS ELIG.</b>	<b>LOCAL PLANNED</b>	<b>STATE PLANNED</b>	<b>LOCAL &amp; STATE TOTAL</b>
Case Management	Children and 18 & 19 year old Adults	Homeless/ Near Homeless	\$ 38,747	\$ -	\$ 38,747
Counseling/Intervention	Children - Short Term	Group	\$ 11,462	\$ -	\$ 11,462
Transitional Shelter	Youth	Group	\$ 41,517	\$ -	\$ 41,517
Supportive Intervention/Guidance Counseling	Adults	Group	\$ 157,125	\$ -	\$ 157,125
Supportive Intervention/Guidance Counseling	Rural Adults & Children	Group	\$ 15,486	\$ -	\$ 15,486
Supportive Intervention/Guidance Counseling	Children & Their Families	Group	\$ 99,586	\$ -	\$ 99,586
Supportive Intervention/Guidance Counseling	Adults/ Problem Pregnancies	Group	\$ 6,721	\$ -	\$ 6,721
Behavioral Therapeutic Activities	Young Children with Behavior Problems in Day Care or Child Care Facilities	Group	\$ 52,526	\$ -	\$ 52,526
Counseling/Intervention	AFC	Group	\$ -	\$ 33,568	\$ 33,568
<b>DISTRICT II TOTALS</b>			<b>\$ 423,170</b>	<b>\$ 33,568</b>	<b>\$ 456,738</b>

**ADMINISTRATION FOR CHILDREN, YOUTH, AND FAMILIES (ACYF)  
SFY 2010**

<b>DISTRICT III (APACHE, COCONINO, NAVAJO, YAVAPAI COUNTIES)</b>					
<b>SERVICES</b>	<b>TARGET GROUP</b>	<b>STATUS ELIG.</b>	<b>LOCAL PLANNED</b>	<b>STATE PLANNED</b>	<b>LOCAL &amp; STATE TOTAL</b>
<b>COCONINO COUNTY</b>					
Supportive Intervention/Guidance Counseling	All	Group	\$ 30,000	\$ -	\$ 30,000
<b>COCONINO TOTALS</b>			<b>\$ 30,000</b>	<b>\$ -</b>	<b>\$ 30,000</b>
<b>YAVAPAI COUNTY</b>					
Community Education & Information	Teen Pregnancy Prev.	Group	\$ 12,083	\$ -	\$ 12,083
Supportive Intervention/Guidance Counseling	All	Group	\$ 12,083	\$ -	\$ 12,083
<b>YAVAPAI TOTALS</b>			<b>\$ 24,166</b>	<b>\$ -</b>	<b>\$ 24,166</b>
<b>DISTRICT WIDE</b>					
Counseling/Intervention	Children	Group	\$ -	\$ 7,462	\$ 7,462
Day Treatment and Training	Children	Group	\$ -	\$ 11,188	\$ 11,188
<b>DISTRICT WIDE TOTALS</b>			<b>\$ -</b>	<b>\$ 18,650</b>	<b>\$ 18,650</b>
<b>DISTRICT III TOTALS</b>			<b>\$ 54,166</b>	<b>\$ 18,650</b>	<b>\$ 72,816</b>

<b>DISTRICT IV (LA PAZ, MOHAVE, YUMA COUNTIES)</b>					
<b>SERVICES</b>	<b>TARGET GROUP</b>	<b>STATUS ELIG.</b>	<b>LOCAL PLANNED</b>	<b>STATE PLANNED</b>	<b>LOCAL &amp; STATE TOTAL</b>
<b>DISTRICT WIDE</b>					
Counseling/Intervention	AFC	Group	\$ -	\$ 33,571	\$ 33,571
<b>DISTRICT WIDE TOTALS</b>			<b>\$ -</b>	<b>\$ 33,571</b>	<b>\$ 33,571</b>
<b>DISTRICT IV TOTALS</b>			<b>\$ -</b>	<b>\$ 33,571</b>	<b>\$ 33,571</b>

**ADMINISTRATION FOR CHILDREN, YOUTH, AND FAMILIES (ACYF)  
SFY 2010**

<b>DISTRICT V (GILA, PINAL COUNTIES)</b>					
<b>SERVICES</b>	<b>TARGET GROUP</b>	<b>STATUS ELIG.</b>	<b>LOCAL PLANNED</b>	<b>STATE PLANNED</b>	<b>LOCAL &amp; STATE TOTAL</b>
<b>GILA COUNTY</b>					
Prevention	AFC	Group	\$ 4,840	\$ -	\$ 4,840
Supportive Intervention/Guidance Counseling	AFC	Group	\$ 8,605	\$ -	\$ 8,605
<b>GILA TOTALS</b>			<b>\$ 13,445</b>	<b>\$ -</b>	<b>\$ 13,445</b>
<b>PINAL COUNTY</b>					
Prevention	AFC	Group	\$ 11,832	\$ -	\$ 11,832
Supportive Intervention/Guidance Counseling	AFC	Group	\$ 28,506	\$ -	\$ 28,506
<b>PINAL TOTALS</b>			<b>\$ 40,338</b>	<b>\$ -</b>	<b>\$ 40,338</b>
<b>DISTRICT WIDE</b>					
Volunteer Services	AFC	Group	\$ -	\$ 15,212	\$ 15,212
<b>DISTRICT WIDE TOTALS</b>			<b>\$ -</b>	<b>\$ 15,212</b>	<b>\$ 15,212</b>
<b>DISTRICT V TOTALS</b>			<b>\$ 53,783</b>	<b>\$ 15,212</b>	<b>\$ 68,995</b>

<b>DISTRICT VI (COCHISE, GREENLEE, GRAHAM, SANTA CRUZ COUNTIES)</b>					
<b>SERVICES</b>	<b>TARGET GROUP</b>	<b>STATUS ELIG.</b>	<b>LOCAL PLANNED</b>	<b>STATE PLANNED</b>	<b>LOCAL &amp; STATE TOTAL</b>
<b>GREENLEE COUNTY</b>					
Supportive Intervention/Guidance Counseling	AFC	Group	\$ 8,170	\$ -	\$ 8,170
<b>GREENLEE TOTALS</b>			<b>\$ 8,170</b>	<b>\$ -</b>	<b>\$ 8,170</b>
<b>GRAHAM COUNTY</b>					
Prevention	AFC	Group	\$ 19,780	\$ -	\$ 19,780
<b>GRAHAM TOTALS</b>			<b>\$ 19,780</b>	<b>\$ -</b>	<b>\$ 19,780</b>
<b>DISTRICT WIDE</b>					
Supportive Intervention/Guidance Counseling	AFC	Group	\$ 11,950	\$ 15,212	\$ 27,162
<b>DISTRICT WIDE TOTALS</b>			<b>\$ 11,950</b>	<b>\$ 15,212</b>	<b>\$ 27,162</b>
<b>DISTRICT VI TOTALS</b>			<b>\$ 39,900</b>	<b>\$ 15,212</b>	<b>\$ 55,112</b>

**ADMINISTRATION FOR CHILDREN, YOUTH, AND FAMILIES (ACYF)  
SFY 2010**

<b>TRIBAL AND STATEWIDE</b>					
<b>SERVICES</b>	<b>TARGET GROUP</b>	<b>STATUS ELIG.</b>	<b>LOCAL PLANNED</b>	<b>STATE PLANNED</b>	<b>LOCAL &amp; STATE TOTAL</b>
<b>TRIBAL</b>					
ACYF/ITCA Tribal Consultation/Planning			\$ -	\$ 31,642	\$ 31,642
Navajo Home Based Services (Tribal Allocation, chart on page 4 of this Plan)			\$ 1,242,896	\$ -	\$ 1,242,896
Gila Home Based Services (Tribal Allocation, chart on page 4 of this Plan)			\$ 18,417	\$ -	\$ 18,417
<b>TRIBAL TOTALS</b>			<b>\$ 1,261,313</b>	<b>\$ 31,642</b>	<b>\$ 1,292,955</b>
<b>ADMINISTRATION/OTHER</b>					
In-Home Family Support			\$ -	\$ 680,213	\$ 680,213
Protective Services for Children			\$ -	\$ 3,007,153	\$ 3,007,153
Protective Services for Children			\$ -	\$ 4,574,414	\$ 4,574,414
Protective Services for Children (Caseload Growth CPS In & Out-of-Home)			\$ -	\$ 286,301	\$ 286,301
TANF/SSBG Funds Children's Services (48th Legislature Second Regular Session HB 2209 (Chapter 285) Section 6)			\$ -	\$ 22,613,100	\$ 22,613,100
Case Management			\$ -	\$ 1,440,417	\$ 1,440,417
Home Recruitment and Study			\$ -	\$ 38,920	\$ 38,920
<b>ADMIN / OTHER TOTALS</b>			<b>\$ -</b>	<b>\$ 32,640,518</b>	<b>\$ 32,640,518</b>
<b>TRIBAL AND STATEWIDE SERVICES</b>			<b>\$ 1,261,313</b>	<b>\$ 32,672,160</b>	<b>\$ 33,933,473</b>
<b>NOTE: TANF Funds Transferred to SSBG Federal Restrictions:</b>					
TANF/SSBG funds are restricted for use per 42 U.S.C. Part A, Title IV, Sec. 404, (d) (3) (B), which reads: "EXCEPTION RELATING TO TITLE XX PROGRAMS. All amounts paid to a State under this part that are used to carry out State programs pursuant to Title XX shall be used only to carry out programs and services to children and their families whose income is less than 200 percent of the income official poverty line (as defined by the Office of Management and Budget, revised annually... Act of 1981) applicable to a family of the size involved."					
<b>ALL ACYF SERVICES</b>					
			<b>LOCAL PLANNED</b>	<b>STATE PLANNED</b>	<b>LOCAL &amp; STATE TOTAL</b>
<b>ACYF TOTALS</b>			<b>\$ 1,987,566</b>	<b>\$ 32,980,773</b>	<b>\$ 34,968,339</b>

**CHILD CARE ADMINISTRATION (CCA)  
SFY 2010**

<b>STATEWIDE</b>					
<b>SERVICES</b>	<b>TARGET GROUP</b>	<b>STATUS ELIG.</b>	<b>LOCAL PLANNED</b>	<b>STATE PLANNED</b>	<b>LOCAL &amp; STATE TOTAL</b>
Tribal Allocation (Tohono O'odham Nation for Day Care Services - Children) (Tribal Allocation, chart on page 4 of this Plan)			\$ 120,644	\$ -	\$ 120,644
Day Care Services - Childrer			\$ -	\$ 163,432	\$ 163,432
<b>STATEWIDE TOTALS</b>			<b>\$ 120,644</b>	<b>\$ 163,432</b>	<b>\$ 284,076</b>
<b>ALL CCA SERVICES</b>					
			<b>LOCAL PLANNED</b>	<b>STATE PLANNED</b>	<b>LOCAL &amp; STATE TOTAL</b>
<b>CCA TOTALS</b>			<b>\$ 120,644</b>	<b>\$ 163,432</b>	<b>\$ 284,076</b>

**OFFICE OF COMMUNITY PARTNERSHIPS AND INNOVATIVE PRACTICES (CPIP)  
SFY 2010**

<b>DISTRICT I (MARICOPA COUNTY)</b>					
<b>SERVICES</b>	<b>TARGET GROUP</b>	<b>STATUS ELIG.</b>	<b>LOCAL PLANNED</b>	<b>STATE PLANNED</b>	<b>LOCAL &amp; STATE TOTAL</b>
Emergency Shelter	Victims of Domestic Violence	Group	\$ 336,352	\$ -	\$ 336,352
Supportive Intervention/Guidance Counseling	Domestic Violence	Group	\$ 40,332	\$ -	\$ 40,332
Emergency Shelter	Homeless Families & Individuals	Group	\$ 257,496	\$ 133,077	\$ 390,573
Transitional Housing	ELD/DD - Homeless	Group	\$ 83,289	\$ -	\$ 83,289
Transitional Housing	Homeless-Individuals & Families	Group	\$ 64,803	\$ -	\$ 64,803
Case Management (Basic Needs)	AFC	Group	\$ 983,151	\$ 179,280	\$ 1,162,431
Case Management	Homeless	Not Ap.	\$ -	\$ 52,170	\$ 52,170
Transportation	Homeless or Unemployed	Group	\$ 16,167	\$ -	\$ 16,167
Planning	Homeless	Not Ap.	\$ -	\$ 10,000	\$ 10,000
Transitional Housing	Homeless	Not Ap.	\$ -	\$ 4,079	\$ 4,079
<b>DISTRICT I TOTALS</b>			<b>\$ 1,781,590</b>	<b>\$ 378,606</b>	<b>\$ 2,160,196</b>

**OFFICE OF COMMUNITY PARTNERSHIPS AND INNOVATIVE PRACTICES (CPIP)  
SFY 2010**

<b>DISTRICT II (PIMA COUNTY)</b>					
<b>SERVICES</b>	<b>TARGET GROUP</b>	<b>STATUS ELIG.</b>	<b>LOCAL PLANNED</b>	<b>STATE PLANNED</b>	<b>LOCAL &amp; STATE TOTAL</b>
Case Management	AD - low income Rural	Group	\$ 11,615	\$ -	\$ 11,615
Case Management	AD - young - 18-28 HML	Group	\$ 34,855	\$ -	\$ 34,855
Case Management	Adults	Homeless	\$ 32,585	\$ -	\$ 32,585
Employment Related Services	Unemployed Adults	Group	\$ 46,941	\$ -	\$ 46,941
Supportive Intervention/Guidance Counseling	Provide ongoing counseling for rape victims, etc.	Group	\$ 21,171	\$ -	\$ 21,171
Case Management	AFC	Group	\$ -	\$ 25,305	\$ 25,305
Crisis Shelter Services	Adults - Domestic Violence Victims	Group	\$ 49,357	\$ 8,207	\$ 57,564
Coordination	Homeless	Not Ap.	\$ -	\$ 19,731	\$ 19,731
Legal Assistance	Low Income Residents	Group	\$ -	\$ -	\$ -
Shelter	All Homeless	Not Ap.	\$ -	\$ 6,974	\$ 6,974
Transitional Housing	Homeless	Not Ap		\$ 7,429	\$ 7,429
<b>DISTRICT II TOTALS</b>			<b>\$ 196,524</b>	<b>\$ 67,646</b>	<b>\$ 264,170</b>

**OFFICE OF COMMUNITY PARTNERSHIPS AND INNOVATIVE PRACTICES (CPIP)  
SFY 2010**

<b>DISTRICT III (APACHE, COCONINO, NAVAJO, YAVAPAI COUNTIES)</b>					
<b>SERVICES</b>	<b>TARGET GROUP</b>	<b>STATUS ELIG.</b>	<b>LOCAL PLANNED</b>	<b>STATE PLANNED</b>	<b>LOCAL &amp; STATE TOTAL</b>
<b>APACHE COUNTY</b>					
Transitional Housing	Homeless	Not Ap.	\$ -	\$ 7,470	\$ 7,470
<b>APACHE TOTALS</b>			<b>\$ -</b>	<b>\$ 7,470</b>	<b>\$ 7,470</b>
<b>COCONINO COUNTY</b>					
Emergency Shelter	AFC - Crisis Intervention	Group	\$ 7,000	\$ -	\$ 7,000
Supportive Intervention/Guidance Counseling	AFC Domestic Violence	Group	\$ 7,000	\$ -	\$ 7,000
Case Management	AFC - Crisis Intervention	Group	\$ 7,000	\$ 3,197	\$ 10,197
Transportation	ELD/PWD/ Low Income	Group	\$ 12,000	\$ -	\$ 12,000
<b>COCONINO TOTALS</b>			<b>\$ 33,000</b>	<b>\$ 3,197</b>	<b>\$ 36,197</b>
<b>NAVAJO COUNTY</b>					
Emergency Shelter	AFC - Crisis Intervention	Group	\$ 19,015	\$ -	\$ 19,015
Case Management	AFC - Crisis Intervention	Group	\$ 7,006	\$ -	\$ 7,006
Emergency Shelter	Homeless	Group	\$ -	\$ -	\$ -
Transportation	AFC	Group	\$ 5,002	\$ -	\$ 5,002
<b>NAVAJO TOTALS</b>			<b>\$ 31,023</b>	<b>\$ -</b>	<b>\$ 31,023</b>
<b>YAVAPAI COUNTY</b>					
Case Management Assistance for Eviction Prevention	AFC - Crisis Intervention	Group	\$ 6,041	\$ -	\$ 6,041
Emergency Shelter	Homeless	Group	\$ -	\$ 262	\$ 262
Emergency Shelter	AFC - Crisis Intervention	Group	\$ 6,041	\$ -	\$ 6,041
Case Management	AFC - Crisis Intervention	Group	\$ 12,083	\$ -	\$ 12,083
Transitional Housing	Homeless	Group	\$ -	\$ 3,340	\$ 3,340
Transportation	All	Group	\$ 21,749	\$ -	\$ 21,749
<b>YAVAPAI TOTALS</b>			<b>\$ 45,914</b>	<b>\$ 3,602</b>	<b>\$ 49,516</b>
<b>DISTRICT WIDE</b>					
Community Services	Low Income	Group	\$ -	\$ 4,202	\$ 4,202
Case Management	AFC	Group	\$ -	\$ 4,202	\$ 4,202
<b>DISTRICT WIDE TOTALS</b>			<b>\$ -</b>	<b>\$ 8,404</b>	<b>\$ 8,404</b>
<b>DISTRICT III TOTALS</b>			<b>\$ 109,937</b>	<b>\$ 22,673</b>	<b>\$ 132,610</b>

**OFFICE OF COMMUNITY PARTNERSHIPS AND INNOVATIVE PRACTICES (CPIP)  
SFY 2010**

<b>DISTRICT IV (LA PAZ, MOHAVE, YUMA COUNTIES)</b>					
<b>SERVICES</b>	<b>TARGET GROUP</b>	<b>STATUS ELIG.</b>	<b>LOCAL PLANNED</b>	<b>STATE PLANNED</b>	<b>LOCAL &amp; STATE TOTAL</b>
<b>MOHAVE COUNTY</b>					
Emergency Shelter	Domestic Violence	Group	\$ 50,936	\$ -	\$ 50,936
<b>MOHAVE TOTALS</b>			<b>\$ 50,936</b>	<b>\$ -</b>	<b>\$ 50,936</b>
<b>YUMA COUNTY</b>					
Emergency Shelter	AFC	Group	\$ 28,159	\$ -	\$ 28,159
Emergency Shelter	Homeless	Group	\$ -	\$ 3,687	\$ 3,687
<b>YUMA TOTALS</b>			<b>\$ 28,159</b>	<b>\$ 3,687</b>	<b>\$ 31,846</b>
<b>DISTRICT WIDE</b>					
Community Services	Low Income	Group	\$ -	\$ 15,434	\$ 15,434
<b>DISTRICT WIDE TOTALS</b>			<b>\$ -</b>	<b>\$ 15,434</b>	<b>\$ 15,434</b>
<b>DISTRICT IV TOTALS</b>			<b>\$ 79,095</b>	<b>\$ 19,121</b>	<b>\$ 98,216</b>

<b>DISTRICT V (GILA, PINAL COUNTIES)</b>					
<b>SERVICES</b>	<b>TARGET GROUP</b>	<b>STATUS ELIG.</b>	<b>LOCAL PLANNED</b>	<b>STATE PLANNED</b>	<b>LOCAL &amp; STATE TOTAL</b>
<b>GILA COUNTY</b>					
Emergency Shelter	Domestic Violence	Group	\$ 26,620	\$ -	\$ 26,620
Community Services	Low Income	Group	\$ -	\$ 803	\$ 803
Case Management	AFC	Group	\$ 8,352	\$ 804	\$ 9,156
<b>GILA TOTALS</b>			<b>\$ 34,972</b>	<b>\$ 1,607</b>	<b>\$ 36,579</b>
<b>PINAL COUNTY</b>					
Emergency Shelter	Domestic Violence	Group	\$ 52,719	\$ -	\$ 52,719
Case Management	AFC	Group	\$ 16,703	\$ 6,203	\$ 22,906
<b>PINAL TOTALS</b>			<b>\$ 69,422</b>	<b>\$ 6,203</b>	<b>\$ 75,625</b>
<b>DISTRICT V TOTALS</b>			<b>\$ 104,394</b>	<b>\$ 7,810</b>	<b>\$ 112,204</b>

**OFFICE OF COMMUNITY PARTNERSHIPS AND INNOVATIVE PRACTICES (CPIP)  
SFY 2010**

<b>DISTRICT VI (COCHISE, GREENLEE, GRAHAM, SANTA CRUZ COUNTIES)</b>					
<b>SERVICES</b>	<b>TARGET GROUP</b>	<b>STATUS ELIG.</b>	<b>LOCAL PLANNED</b>	<b>STATE PLANNED</b>	<b>LOCAL &amp; STATE TOTAL</b>
<b>COCHISE COUNTY</b>					
Case Management	Domestic Violence	Group	\$ 33,340	\$ -	\$ 33,340
<b>COCHISE TOTALS</b>			<b>\$ 33,340</b>	<b>\$ -</b>	<b>\$ 33,340</b>
<b>DISTRICT WIDE</b>					
Community Services	Low Income	Group	\$ -	\$ 4,553	\$ 4,553
Case Management	AFC	Group	\$ -	\$ 4,554	\$ 4,554
<b>DISTRICT WIDE TOTALS</b>			<b>\$ -</b>	<b>\$ 9,107</b>	<b>\$ 9,107</b>
<b>DISTRICT VI TOTALS</b>			<b>\$ 33,340</b>	<b>\$ 9,107</b>	<b>\$ 42,447</b>

<b>STATEWIDE</b>					
<b>SERVICES</b>	<b>TARGET GROUP</b>	<b>STATUS ELIG.</b>	<b>LOCAL PLANNED</b>	<b>STATE PLANNED</b>	<b>LOCAL &amp; STATE TOTAL</b>
Administrative Services			\$ -	\$ 403,855	\$ 403,855
<b>STATEWIDE</b>					
Comprehensive Service Delivery			\$ -	\$ 1,431,535	\$ 1,431,535
Coordination:					
Food Bank - AFC			\$ -	\$ 23,090	\$ 23,090
Homeless - AFC			\$ -	\$ 35,000	\$ 35,000
Rural Food Bank Project-Gleaning			\$ -	\$ 45,000	\$ 45,000
Food (Bank) Administration			\$ -	\$ 158,060	\$ 158,060
<b>STATEWIDE ADMIN/OTHER TOTALS</b>			<b>\$ -</b>	<b>\$ 2,096,540</b>	<b>\$ 2,096,540</b>

<b>ALL CPIP SERVICES</b>			
	<b>LOCAL PLANNED</b>	<b>STATE PLANNED</b>	<b>LOCAL &amp; STATE TOTAL</b>
<b>CPIP TOTALS</b>	<b>\$ 2,304,880</b>	<b>\$ 2,601,503</b>	<b>\$ 4,906,383</b>

**DIVISION OF AGING AND ADULT SERVICES (DAAS)  
SFY 2010**

<b>DISTRICT I (MARICOPA COUNTY)</b>					
<b>SERVICES</b>	<b>TARGET GROUP</b>	<b>STATUS ELIG.</b>	<b>LOCAL PLANNED</b>	<b>STATE PLANNED</b>	<b>LOCAL &amp; STATE TOTAL</b>
Adult Day Care/Adult Day Health Care	ELD	Group	\$ 203,322	\$ -	\$ 203,322
Adult Day Care/Adult Day Health Care	PWD	Group	\$ 13,425	\$ -	\$ 13,425
Congregate Meals	PWD	Group	\$ 13,425	\$ 1,473	\$ 14,898
Supportive Intervention/Guidance Counseling	ELD	Group	\$ 177,775	\$ 43,450	\$ 221,225
Home Delivered Meals	ELD	Group	\$ 413,941	\$ -	\$ 413,941
Home Delivered Meals	PWD	Group	\$ 19,231	\$ -	\$ 19,231
Transportation	ELD	Group	\$ 35,528	\$ 7,008	\$ 42,536
Home Care	ELD	Group	\$ 163,976	\$ 448,195	\$ 612,171
Home Care	PWD	Group	\$ 38,340	\$ -	\$ 38,340
Administrative Services	ELD/PWD	Group	\$ -	\$ 187,137	\$ 187,137
Respite	ELD/PWD	Group	\$ -	\$ 95,083	\$ 95,083
Case Management	ELD/PWD	Group	\$ -	\$ 59,256	\$ 59,256
Coordination	Not Ap.	Not Ap.	\$ -	\$ 18,221	\$ 18,221
Legal Assistance	ELD	Group	\$ -	\$ 18,888	\$ 18,888
<b>DISTRICT I TOTALS</b>			<b>\$ 1,078,963</b>	<b>\$ 878,711</b>	<b>\$ 1,957,674</b>

**DIVISION OF AGING AND ADULT SERVICES (DAAS)  
SFY 2010**

<b>DISTRICT II (PIMA COUNTY)</b>					
<b>SERVICES</b>	<b>TARGET GROUP</b>	<b>STATUS ELIG.</b>	<b>LOCAL PLANNED</b>	<b>STATE PLANNED</b>	<b>LOCAL &amp; STATE TOTAL</b>
Adult Day Care/Adult Day Health Care	ELD/AD	Group	\$ 15,000	\$ 37,000	\$ 52,000
Home Care (Personal Care, Housekeeping & Home Health)	ELD/AD	Group	\$ 274,797	\$ 286,687	\$ 561,484
Home Care (Shopper Service)	ELD/AD	Group	\$ -	\$ 5,157	\$ 5,157
Case Management	ELD/AD	Group	\$ 341,210	\$ -	\$ 341,210
Case Management - Intake	ELD/AD	Group	\$ -	\$ 34,670	\$ 34,670
Home Repair/Renovation	ELD/AD	Group	\$ 23,809	\$ 4,193	\$ 28,002
Home Delivered Meals	ELD/AD	Group	\$ 81,507	\$ 14,847	\$ 96,354
Administrative Services	ELD/AD	Group	\$ -	\$ 5,594	\$ 5,594
Legal Assistance	ELD/AD	Group	\$ 97,515	\$ -	\$ 97,515
Advocacy	ELD/AD	Not Ap.	\$ -	\$ 21,116	\$ 21,116
<b>DISTRICT II TOTALS</b>			<b>\$ 833,838</b>	<b>\$ 409,264</b>	<b>\$ 1,243,102</b>

**DIVISION OF AGING AND ADULT SERVICES (DAAS)  
SFY 2010**

<b>DISTRICT III (APACHE, COCONINO, NAVAJO, YAVAPAI COUNTIES)</b>					
<b>SERVICES</b>	<b>TARGET GROUP</b>	<b>STATUS ELIG.</b>	<b>LOCAL PLANNED</b>	<b>STATE PLANNED</b>	<b>LOCAL &amp; STATE TOTAL</b>
<b>APACHE COUNTY</b>					
Home Care	ELD/PWD	Group	\$ -	\$ 8,056	\$ 8,056
Case Management	ELD/PWD	Group	\$ 12,383	\$ 27,885	\$ 40,268
Administrative Services	ELD/PWD	Group	\$ -	\$ 4,379	\$ 4,379
Home Delivered Meals	ELD/PWD	Group	\$ 19,334	\$ 3,698	\$ 23,032
Transportation	ELD/PWD	Group	\$ 7,259	\$ -	\$ 7,259
<b>APACHE TOTALS</b>			<b>\$ 38,976</b>	<b>\$ 44,018</b>	<b>\$ 82,994</b>
<b>COCONINO COUNTY</b>					
Home Delivered Meals	ELD/PWD	Group	\$ 15,000	\$ 5,107	\$ 20,107
Respite	ELD/PWD	Group	\$ 10,000	\$ 1,443	\$ 11,443
Administrative Services	ELD/PWD	Group	\$ -	\$ 4,343	\$ 4,343
Case Management	ELD/PWD	Group	\$ 4,000	\$ 27,503	\$ 31,503
Home Care	ELD/PWD	Group	\$ 2,000	\$ 3,795	\$ 5,795
Transportation	ELD/PWD	Group	\$ -	\$ 7,278	\$ 7,278
<b>COCONINO TOTALS</b>			<b>\$ 31,000</b>	<b>\$ 49,469</b>	<b>\$ 80,469</b>
<b>NAVAJO COUNTY</b>					
Home Care	ELD/PWD	Group	\$ 9,007	\$ 7,462	\$ 16,469
Administrative Services	ELD/PWD	Group	\$ -	\$ 5,947	\$ 5,947
Transportation	ELD/PWD	Group	\$ 5,002	\$ -	\$ 5,002
Case Management	ELD/PWD	Group	\$ -	\$ 41,108	\$ 41,108
Home Delivered Meals	ELD/PWD	Group	\$ 10,008	\$ 4,345	\$ 14,353
<b>NAVAJO TOTALS</b>			<b>\$ 24,017</b>	<b>\$ 58,862</b>	<b>\$ 82,879</b>

**DIVISION OF AGING AND ADULT SERVICES (DAAS)  
SFY 2010**

<b>DISTRICT III (APACHE, COCONINO, NAVAJO, YAVAPAI COUNTIES) continued</b>					
<b>SERVICES</b>	<b>TARGET GROUP</b>	<b>STATUS ELIG.</b>	<b>LOCAL PLANNED</b>	<b>STATE PLANNED</b>	<b>LOCAL &amp; STATE TOTAL</b>
<b>YAVAPAI COUNTY</b>					
Home Health Aid	ELD/PWD	Group	\$ -	\$ 30,478	\$ 30,478
Administrative Services	ELD/PWD	Group	\$ -	\$ 13,607	\$ 13,607
Case Management	ELD/PWD	Group	\$ 6,041	\$ 68,953	\$ 74,994
Supportive Intervention/Guidance Counseling	All	Group	\$ -	\$ 140	\$ 140
Home Delivered Meals	ELD/PWD	Group	\$ 8,457	\$ 5,788	\$ 14,245
Respite	ELD/PWD	Group	\$ 6,041	\$ 15,374	\$ 21,415
Adult Day Care/Adult Day Health Care	ELD/PWD	Group	\$ 18,124	\$ 34,637	\$ 52,761
<b>YAVAPAI TOTALS</b>			<b>\$ 38,663</b>	<b>\$ 168,977</b>	<b>\$ 207,640</b>
<b>DISTRICT III TOTALS</b>			<b>\$ 132,656</b>	<b>\$ 321,326</b>	<b>\$ 453,982</b>

<b>DISTRICT IV (LA PAZ, MOHAVE, YUMA COUNTIES)</b>					
<b>SERVICES</b>	<b>TARGET GROUP</b>	<b>STATUS ELIG.</b>	<b>LOCAL PLANNED</b>	<b>STATE PLANNED</b>	<b>LOCAL &amp; STATE TOTAL</b>
<b>LA PAZ COUNTY</b>					
Home Care	ELD/PWD	Group	\$ 3,313	\$ 12,927	\$ 16,240
Administrative Services	ELD/PWD	Group	\$ -	\$ 6,681	\$ 6,681
Case Management	ELD/PWD	Group	\$ 5,522	\$ 17,198	\$ 22,720
Home Delivered Meals	ELD/PWD	Group	\$ 13,620	\$ -	\$ 13,620
Transportation	AFC	Group	\$ 14,356	\$ -	\$ 14,356
<b>LA PAZ TOTALS</b>			<b>\$ 36,811</b>	<b>\$ 36,806</b>	<b>\$ 73,617</b>

**DIVISION OF AGING AND ADULT SERVICES (DAAS)  
SFY 2010**

<b>DISTRICT IV (LA PAZ, MOHAVE, YUMA COUNTIES)</b>					
<b>continued</b>					
<b>SERVICES</b>	<b>TARGET GROUP</b>	<b>STATUS ELIG.</b>	<b>LOCAL PLANNED</b>	<b>STATE PLANNED</b>	<b>LOCAL &amp; STATE TOTAL</b>
<b>MOHAVE COUNTY</b>					
Home Care	ELD/AD	Group	\$ 37,730	\$ 14,762	\$ 52,492
Case Management	ELD/AD	Group	\$ 39,617	\$ 35,098	\$ 74,715
Administrative Services	ELD/AD	Group	\$ -	\$ 13,965	\$ 13,965
Home Delivered Meals	ELD/AD	Group	\$ 37,730	\$ -	\$ 37,730
<b>MOHAVE TOTALS</b>			<b>\$ 115,077</b>	<b>\$ 63,825</b>	<b>\$ 178,902</b>
<b>YUMA COUNTY</b>					
Home Care	ELD/PWD	Group	\$ 25,813	\$ 4,214	\$ 30,027
Case Management	ELD/PWD	Group	\$ 21,120	\$ 35,684	\$ 56,804
Administrative Services	ELD/PWD	Group	\$ -	\$ 15,007	\$ 15,007
Adult Day Care/Adult Day Health Care	ELD/PWD	Group	\$ 11,733	\$ -	\$ 11,733
Home Delivered Meals	ELD/PWD	Group	\$ 23,466	\$ -	\$ 23,466
Transportation	AFC	Group	\$ 42,239	\$ -	\$ 42,239
Respite	AFC	Group	\$ 4,693	\$ -	\$ 4,693
<b>YUMA TOTALS</b>			<b>\$ 129,064</b>	<b>\$ 54,905</b>	<b>\$ 183,969</b>
<b>DISTRICT IV TOTALS</b>			<b>\$ 280,952</b>	<b>\$ 155,536</b>	<b>\$ 436,488</b>

**DIVISION OF AGING AND ADULT SERVICES (DAAS)  
SFY 2010**

<b>DISTRICT V (GILA, PINAL COUNTIES)</b>					
<b>SERVICES</b>	<b>TARGET GROUP</b>	<b>STATUS ELIG.</b>	<b>LOCAL PLANNED</b>	<b>STATE PLANNED</b>	<b>LOCAL &amp; STATE TOTAL</b>
<b>GILA COUNTY</b>					
Home Care	ELD/PWD	Group	\$ 19,280	\$ 3,554	\$ 22,834
Program Development	ELD/PWD	Group	\$ -	\$ 1,045	\$ 1,045
Home Delivered Meals	ELD/PWD	Group	\$ 20,594	\$ 11,620	\$ 32,214
Home Repair/Renovation	ELD/PWD	Group	\$ 6,477	\$ 5,797	\$ 12,274
Case Management	ELD/PWD	Group	\$ 27,218	\$ 11,218	\$ 38,436
Respite	ELD/PWD	Group	\$ -	\$ 1,408	\$ 1,408
Administrative Services	ELD/PWD	Group	\$ -	\$ 9,764	\$ 9,764
<b>GILA COUNTY TOTALS</b>			<b>\$ 73,569</b>	<b>\$ 44,406</b>	<b>\$ 117,975</b>
<b>PINAL COUNTY</b>					
Home Care	ELD/PWD	Group	\$ 8,806	\$ 6,051	\$ 14,857
Program Development	ELD/PWD	Group	\$ -	\$ 1,779	\$ 1,779
Administrative Services	ELD/PWD	Group	\$ -	\$ 16,624	\$ 16,624
Home Delivered Meals	ELD/PWD	Group	\$ 24,718	\$ 19,785	\$ 44,503
Home Repair/Renovation	ELD/PWD	Group	\$ 7,911	\$ 9,870	\$ 17,781
Case Management	ELD/PWD	Group	\$ 31,256	\$ 19,100	\$ 50,356
<b>PINAL COUNTY TOTALS</b>			<b>\$ 72,691</b>	<b>\$ 73,209</b>	<b>\$ 145,900</b>
<b>DISTRICT V TOTALS</b>			<b>\$ 146,260</b>	<b>\$ 117,615</b>	<b>\$ 263,875</b>

**DIVISION OF AGING AND ADULT SERVICES (DAAS)  
SFY 2010**

<b>DISTRICT VI (COCHISE, GREENLEE, GRAHAM, SANTA CRUZ COUNTIES)</b>					
<b>SERVICES</b>	<b>TARGET GROUP</b>	<b>STATUS ELIG.</b>	<b>LOCAL PLANNED</b>	<b>STATE PLANNED</b>	<b>LOCAL &amp; STATE TOTAL</b>
<b>COCHISE COUNTY</b>					
Congregate Meals	ELD/PWD	Group	\$ -	\$ 8,028	\$ 8,028
Administrative Services	ELD/PWD	Group	\$ -	\$ 13,373	\$ 13,373
Respite	ELD/PWD	Group	\$ -	\$ 8,727	\$ 8,727
Home Care	ELD/PWD	Group	\$ 23,120	\$ 8,955	\$ 32,075
Home Delivered Meals	ELD/PWD/AD	Group	\$ 56,600	\$ 8,727	\$ 65,327
Case Management	ELD/PWD	Group	\$ 7,340	\$ 40,207	\$ 47,547
Case Management (Grandparents)	ELD/PWD	Group	\$ -	\$ 5,313	\$ 5,313
<b>COCHISE TOTALS</b>			<b>\$ 87,060</b>	<b>\$ 93,330</b>	<b>\$ 180,390</b>
<b>GRAHAM COUNTY</b>					
Home Care	ELD/PWD	Group	\$ 9,600	\$ 1,844	\$ 11,444
Administrative Services	ELD/PWD	Group	\$ -	\$ 4,782	\$ 4,782
Home Delivered Meals	ELD/PWD	Group	\$ 24,350	\$ -	\$ 24,350
Respite	ELD/PWD	Group	\$ 4,420	\$ 1,745	\$ 6,165
Case Management	ELD/PWD	Group	\$ -	\$ 22,812	\$ 22,812
Case Management (Grandparents)	ELD/PWD	Group	\$ -	\$ 1,103	\$ 1,103
<b>GRAHAM TOTALS</b>			<b>\$ 38,370</b>	<b>\$ 32,286</b>	<b>\$ 70,656</b>

**DIVISION OF AGING AND ADULT SERVICES (DAAS)  
SFY 2010**

<b>DISTRICT VI (COCHISE, GREENLEE, GRAHAM, SANTA CRUZ COUNTIES) continued</b>					
<b>SERVICES</b>	<b>TARGET GROUP</b>	<b>STATUS ELIG.</b>	<b>LOCAL PLANNED</b>	<b>STATE PLANNED</b>	<b>LOCAL &amp; STATE TOTAL</b>
<b>GREENLEE COUNTY</b>					
Home Care	ELD/PWD	Group	\$ 16,530	\$ -	\$ 16,530
Administrative Services	ELD/PWD	Group	\$ -	\$ 3,881	\$ 3,881
Home Delivered Meals	ELD/PWD/AD	Group	\$ 20,350	\$ -	\$ 20,350
Transportation	ELD/PWD	Group	\$ 2,400	\$ 646	\$ 3,046
Case Management	ELD/PWD	Group	\$ -	\$ 14,591	\$ 14,591
Case Management (Grandparents)	ELD/PWD	Group	\$ -	\$ 270	\$ 270
<b>GREENLEE TOTALS</b>			<b>\$ 39,280</b>	<b>\$ 19,388</b>	<b>\$ 58,668</b>
<b>SANTA CRUZ COUNTY</b>					
Home Care	ELD/PWD	Group	\$ 11,200	\$ 330	\$ 11,530
Administrative Services	ELD/PWD	Group	\$ -	\$ 4,688	\$ 4,688
Home Delivered Meals	ELD/PWD/AD	Group	\$ 23,750	\$ -	\$ 23,750
Case Management	ELD/PWD	Group	\$ -	\$ 26,216	\$ 26,216
Case Management(Grandparents)	ELD/PWD	Group	\$ -	\$ 1,314	\$ 1,314
<b>SANTA CRUZ TOTALS</b>			<b>\$ 34,950</b>	<b>\$ 32,548</b>	<b>\$ 67,498</b>
<b>DISTRICT VI TOTALS</b>			<b>\$ 199,660</b>	<b>\$ 177,552</b>	<b>\$ 377,212</b>

<b>STATEWIDE</b>					
<b>SERVICES</b>	<b>TARGET GROUP</b>	<b>STATUS ELIG.</b>	<b>LOCAL PLANNED</b>	<b>STATE PLANNED</b>	<b>LOCAL &amp; STATE TOTAL</b>
Protective Services for Adults			\$ -	\$ 3,200,830	\$ 3,200,830
Tribal Entities Home Based Services (Tribal Allocations Chart on page 4 of this Plan)			\$ 677,184	\$ -	\$ 677,184
<b>STATEWIDE TOTALS</b>			<b>\$ 677,184</b>	<b>\$ 3,200,830</b>	<b>\$ 3,878,014</b>

<b>ALL DAAS SERVICES</b>				
		<b>LOCAL PLANNED</b>	<b>STATE PLANNED</b>	<b>LOCAL &amp; STATE TOTAL</b>
<b>DAAS TOTALS</b>		<b>\$ 3,349,513</b>	<b>\$ 5,260,834</b>	<b>\$ 8,610,347</b>

**DIVISION OF DEVELOPMENTAL DISABILITIES (DDD)  
SFY 2010**

<b>DISTRICT I (MARICOPA COUNTY)</b>					
<b>SERVICES</b>	<b>TARGET GROUP</b>	<b>STATUS ELIG.</b>	<b>LOCAL PLANNED</b>	<b>STATE PLANNED</b>	<b>LOCAL &amp; STATE TOTAL</b>
Employment Related Services	PWDD Special Employment Opportunities	Group	\$ 336,435	\$ -	\$ 336,435
Employment Related Services	PWDD-In Family Home Needs Community or Specialized Employment	Group	\$ 74,761	\$ -	\$ 74,761
Habilitation Services	PWDD Not Eligible for ALTCS	Group	\$ 32,104	\$ -	\$ 32,104
Attendant Care/Personal Assistance	PWDD Not Eligible for ALTCS	Group	\$ 28,264	\$ -	\$ 28,264
Respite	Caregivers for PWDD Not IDEA Part H Eligible	Group	\$ 32,606	\$ -	\$ 32,606
Transportation	PWD	Group	\$ 26,044	\$ -	\$ 26,044
<b>DISTRICT I TOTALS</b>			<b>\$ 530,214</b>	<b>\$ -</b>	<b>\$ 530,214</b>

**DIVISION OF DEVELOPMENTAL DISABILITIES (DDD)  
SFY 2010**

<b>DISTRICT III (APACHE, COCONINO, NAVAJO, YAVAPAI COUNTIES)</b>					
<b>SERVICES</b>	<b>TARGET GROUP</b>	<b>STATUS ELIG.</b>	<b>LOCAL PLANNED</b>	<b>STATE PLANNED</b>	<b>LOCAL &amp; STATE TOTAL</b>
<b>COCONINO COUNTY</b>					
Supported Employment	DD Adults	Group	\$ 51,000	\$ -	\$ 51,000
<b>COCONINO TOTALS</b>			<b>\$ 51,000</b>	<b>\$ -</b>	<b>\$ 51,000</b>
<b>YAVAPAI COUNTY</b>					
Supported Employment	DD Adults	Group	\$ 6,041	\$ -	\$ 6,041
<b>YAVAPAI TOTALS</b>			<b>\$ 6,041</b>	<b>\$ -</b>	<b>\$ 6,041</b>
<b>DISTRICT III TOTALS</b>			<b>\$ 57,041</b>	<b>\$ -</b>	<b>\$ 57,041</b>

<b>DISTRICT IV (LA PAZ, MOHAVE, YUMA COUNTIES)</b>					
<b>SERVICES</b>	<b>TARGET GROUP</b>	<b>STATUS ELIG.</b>	<b>LOCAL PLANNED</b>	<b>STATE PLANNED</b>	<b>LOCAL &amp; STATE TOTAL</b>
<b>YUMA COUNTY</b>					
Job Training	DD Adults	Group	\$ 56,319	\$ -	\$ 56,319
Respite	CH DD	Group	\$ 2,347	\$ -	\$ 2,347
<b>YUMA TOTALS</b>			<b>\$ 58,666</b>	<b>\$ -</b>	<b>\$ 58,666</b>
<b>DISTRICT IV TOTALS</b>			<b>\$ 58,666</b>	<b>\$ -</b>	<b>\$ 58,666</b>

<b>DISTRICT V (GILA, PINAL COUNTIES)</b>					
<b>SERVICES</b>	<b>TARGET GROUP</b>	<b>STATUS ELIG.</b>	<b>LOCAL PLANNED</b>	<b>STATE PLANNED</b>	<b>LOCAL &amp; STATE TOTAL</b>
<b>GILA COUNTY</b>					
Employment Related Services	DD	Group	\$ 30,111	\$ -	\$ 30,111
<b>GILA TOTALS</b>			<b>\$ 30,111</b>	<b>\$ -</b>	<b>\$ 30,111</b>
<b>PINAL COUNTY</b>					
Employment Related Services	DD	Group	\$ 60,222	\$ -	\$ 60,222
<b>PINAL TOTALS</b>			<b>\$ 60,222</b>	<b>\$ -</b>	<b>\$ 60,222</b>
<b>DISTRICT V TOTALS</b>			<b>\$ 90,333</b>	<b>\$ -</b>	<b>\$ 90,333</b>

**DIVISION OF DEVELOPMENTAL DISABILITIES (DDD)  
SFY 2010**

<b>DISTRICT VI (COCHISE, GREENLEE, GRAHAM, SANTA CRUZ COUNTIES)</b>					
<b>SERVICES</b>	<b>TARGET GROUP</b>	<b>STATUS ELIG.</b>	<b>LOCAL PLANNED</b>	<b>STATE PLANNED</b>	<b>LOCAL &amp; STATE TOTAL</b>
<b>COCHISE COUNTY</b>					
Employment Related Services	AD-DD	Group	\$ 44,500	\$ -	\$ 44,500
<b>COCHISE TOTALS</b>			<b>\$ 44,500</b>	<b>\$ -</b>	<b>\$ 44,500</b>
<b>GRAHAM COUNTY</b>					
Employment Related Services	AD-DD	Group	\$ 30,100	\$ -	\$ 30,100
<b>GRAHAM TOTALS</b>			<b>\$ 30,100</b>	<b>\$ -</b>	<b>\$ 30,100</b>
<b>GREENLEE COUNTY</b>					
Developmental Disability Day Care	CH-DD	Group	\$ 6,100	\$ -	\$ 6,100
<b>GREENLEE TOTALS</b>			<b>\$ 6,100</b>	<b>\$ -</b>	<b>\$ 6,100</b>
<b>SANTA CRUZ COUNTY</b>					
Employment Related Services	AD-DD	Group	\$ 48,280	\$ -	\$ 48,280
<b>SANTA CRUZ TOTALS</b>			<b>\$ 48,280</b>	<b>\$ -</b>	<b>\$ 48,280</b>
<b>DISTRICT VI TOTALS</b>			<b>\$ 128,980</b>	<b>\$ -</b>	<b>\$ 128,980</b>

<b>STATEWIDE</b>					
<b>SERVICES</b>	<b>TARGET GROUP</b>	<b>STATUS ELIG.</b>	<b>LOCAL PLANNED</b>	<b>STATE PLANNED</b>	<b>LOCAL &amp; STATE TOTAL</b>
Employment Related Services (DD Target Group)			\$ -	\$ 188,285	\$ 188,285
Case Management (DD Target Group)			\$ -	\$ 180,863	\$ 180,863
Counseling/Intervention (DD Target Group)			\$ -	\$ 159,212	\$ 159,212
Case Management			\$ -	\$ 269,129	\$ 269,129
<b>STATEWIDE TOTALS</b>			<b>\$ -</b>	<b>\$ 797,489</b>	<b>\$ 797,489</b>

<b>ALL DDD SERVICES</b>			
	<b>LOCAL PLANNED</b>	<b>STATE PLANNED</b>	<b>LOCAL &amp; STATE TOTAL</b>
<b>DDD TOTALS</b>	<b>\$ 865,234</b>	<b>\$ 797,489</b>	<b>\$ 1,662,723</b>

**EMPLOYMENT ADMINISTRATION (EA)  
SFY 2010**

<b>DISTRICT II (PIMA COUNTY)</b>					
<b>SERVICES</b>	<b>TARGET GROUP</b>	<b>STATUS ELIG.</b>	<b>LOCAL PLANNED</b>	<b>STATE PLANNED</b>	<b>LOCAL &amp; STATE TOTAL</b>
Case Management	Adults Single Head of Households	Group	\$ 22,837	\$ -	\$ 22,837
<b>DISTRICT II TOTALS</b>			\$ 22,837	\$ -	\$ 22,837

<b>ALL EA SERVICES</b>				
		<b>LOCAL PLANNED</b>	<b>STATE PLANNED</b>	<b>LOCAL &amp; STATE TOTAL</b>
<b>EA TOTALS</b>		\$ 22,837	\$ -	\$ 22,837

**REHABILITATION SERVICES ADMINISTRATION (RSA)  
SFY 2010**

<b>DISTRICT I (MARICOPA COUNTY)</b>					
<b>SERVICES</b>	<b>TARGET GROUP</b>	<b>STATUS ELIG.</b>	<b>LOCAL PLANNED</b>	<b>STATE PLANNED</b>	<b>LOCAL &amp; STATE TOTAL</b>
Adaptive Aids and Devices	PWD	Group	\$ 15,754	\$ -	\$ 15,754
Supportive Intervention/Guidance Counseling	PWD - Employment	Group	\$ 22,540	\$ -	\$ 22,540
Supported Employment, Extended	PWD	Group	\$ 239,452	\$ -	\$ 239,452
Rehabilitation Instructional Services	PWD	Group	\$ 16,832	\$ -	\$ 16,832
<b>DISTRICT I TOTALS</b>			<b>\$ 294,578</b>	<b>\$ -</b>	<b>\$ 294,578</b>

<b>DISTRICT II (PIMA COUNTY)</b>					
<b>SERVICES</b>	<b>TARGET GROUP</b>	<b>STATUS ELIG.</b>	<b>LOCAL PLANNED</b>	<b>STATE PLANNED</b>	<b>LOCAL &amp; STATE TOTAL</b>
Interpreter	PWD (Deaf) Adults	Group	\$ 3,869	\$ -	\$ 3,869
Supportive Intervention/Guidance Counseling	PWD Impaired	Group	\$ 25,396	\$ -	\$ 25,396
<b>DISTRICT II TOTALS</b>			<b>\$ 29,265</b>	<b>\$ -</b>	<b>\$ 29,265</b>

<b>DISTRICT III (APACHE, COCONINO, NAVAJO, YAVAPAI COUNTIES)</b>					
<b>SERVICES</b>	<b>TARGET GROUP</b>	<b>STATUS ELIG.</b>	<b>LOCAL PLANNED</b>	<b>STATE PLANNED</b>	<b>LOCAL &amp; STATE TOTAL</b>
<b>COCONINO COUNTY</b>					
Supported Employment	PWD Adults	Group	\$ 10,904	\$ -	\$ 10,904
<b>COCONINO TOTALS</b>			<b>\$ 10,904</b>	<b>\$ -</b>	<b>\$ 10,904</b>
<b>NAVAJO COUNTY</b>					
Job Training	PWD Adults	Group	\$ 19,015	\$ -	\$ 19,015
<b>NAVAJO TOTALS</b>			<b>\$ 19,015</b>	<b>\$ -</b>	<b>\$ 19,015</b>
<b>YAVAPAI COUNTY</b>					
Employment Related Services	PWD Adults	Group	\$ 6,041	\$ -	\$ 6,041
<b>YAVAPAI TOTALS</b>			<b>\$ 6,041</b>	<b>\$ -</b>	<b>\$ 6,041</b>
<b>DISTRICT III TOTALS</b>			<b>\$ 35,960</b>	<b>\$ -</b>	<b>\$ 35,960</b>

**REHABILITATION SERVICES ADMINISTRATION (RSA)  
SFY 2010**

<b>DISTRICT IV (LA PAZ, MOHAVE, YUMA COUNTIES)</b>					
<b>SERVICES</b>	<b>TARGET GROUP</b>	<b>STATUS ELIG.</b>	<b>LOCAL PLANNED</b>	<b>STATE PLANNED</b>	<b>LOCAL &amp; STATE TOTAL</b>
<b>MOHAVE COUNTY</b>					
Day Treatment and Training	AFC	Group	\$ 22,639	\$ -	\$ 22,639
<b>MOHAVE TOTALS</b>			<b>\$ 22,639</b>	<b>\$ -</b>	<b>\$ 22,639</b>
<b>YUMA COUNTY</b>					
Employment Related Services	PWD	Group	\$ 7,040	\$ -	\$ 7,040
Rehabilitation Instructional Services	PWD	Group	\$ 11,733	\$ -	\$ 11,733
<b>YUMA TOTALS</b>			<b>\$ 18,773</b>	<b>\$ -</b>	<b>\$ 18,773</b>
<b>DISTRICT IV TOTALS</b>			<b>\$ 41,412</b>	<b>\$ -</b>	<b>\$ 41,412</b>

<b>DISTRICT V (GILA, PINAL COUNTIES)</b>					
<b>SERVICES</b>	<b>TARGET GROUP</b>	<b>STATUS ELIG.</b>	<b>LOCAL PLANNED</b>	<b>STATE PLANNED</b>	<b>LOCAL &amp; STATE TOTAL</b>
<b>GILA COUNTY</b>					
Employment Services	PWD	Group	\$ 16,310	\$ -	\$ 16,310
<b>GILA TOTALS</b>			<b>\$ 16,310</b>	<b>\$ -</b>	<b>\$ 16,310</b>
<b>PINAL COUNTY</b>					
Employment Services	PWD	Group	\$ 18,820	\$ -	\$ 18,820
<b>PINAL TOTALS</b>			<b>\$ 18,820</b>	<b>\$ -</b>	<b>\$ 18,820</b>
<b>DISTRICT V TOTALS</b>			<b>\$ 35,130</b>	<b>\$ -</b>	<b>\$ 35,130</b>

**REHABILITATION SERVICES ADMINISTRATION (RSA)  
SFY 2010**

<b>STATEWIDE</b>					
<b>SERVICES</b>	<b>TARGET GROUP</b>	<b>STATUS ELIG.</b>	<b>LOCAL PLANNED</b>	<b>STATE PLANNED</b>	<b>LOCAL &amp; STATE TOTAL</b>
Case Management	PWD	Group	\$ -	\$ 105,000	\$ 105,000
Employment Related Services	PWD	Group	\$ -	\$ 40,000	\$ 40,000
Independent Living	PWD	Group	\$ -	\$ 602,443	\$ 602,443
<b>STATEWIDE TOTALS</b>			<b>\$ -</b>	<b>\$ 747,443</b>	<b>\$ 747,443</b>

<b>ALL RSA SERVICES</b>			
	<b>LOCAL PLANNED</b>	<b>STATE PLANNED</b>	<b>LOCAL &amp; STATE TOTAL</b>
<b>RSA TOTALS</b>	<b>\$ 436,345</b>	<b>\$ 747,443</b>	<b>\$ 1,183,788</b>

**CROSS-PROGRAM  
SFY 2010**

<b>STATEWIDE</b>					
<b>SERVICES</b>	<b>TARGET GROUP</b>	<b>STATUS ELIG.</b>	<b>LOCAL PLANNED</b>	<b>STATE PLANNED</b>	<b>LOCAL &amp; STATE TOTAL</b>
Case Management			\$ -	\$ 709,896	\$ 709,896
<b>STATEWIDE TOTALS</b>			<b>\$ -</b>	<b>\$ 709,896</b>	<b>\$ 709,896</b>

**PLANNED SFY 2010 SSBG SERVICE ALLOCATIONS  
LISTED BY FEDERAL SSBG SERVICE DEFINITIONS NUMBERS 1 - 29  
INDICATING THE RESPONSIBLE DES ADMINISTRATION  
THAT PROVIDES OR CONTRACTS FOR THE SERVICE**

SVC CODE	SERVICE (SVC) TITLE	ADMIN	ALLOCATION
1.	Adoption Services	DAAS	\$ -
		RSA	\$ -
		EA	\$ -
		CCA	\$ -
		DDD	\$ -
		CPIP	\$ -
		ACYF	\$ -
		TOTAL	\$ -
2.	Case Management Services	DAAS	\$ 985,206
		RSA	\$ 105,000
		EA	\$ 22,837
		CCA	\$ -
		DDD	\$ -
		CPIP	\$ 1,428,446
		ACYF	\$ 77,284
		CROSS-PROGRAM	\$ 709,896
TOTAL	\$ 3,328,669		
3.	Congregate Meals	DAAS	\$ 22,926
		RSA	\$ -
		EA	\$ -
		CCA	\$ -
		DDD	\$ -
		CPIP	\$ -
		ACYF	\$ -
		TOTAL	\$ 22,926
4.	Counseling Services	DAAS	\$ -
		RSA	\$ -
		EA	\$ -
		CCA	\$ -
		DDD	\$ -
		CPIP	\$ -
		ACYF	\$ 258,085
		TOTAL	\$ 258,085

**PLANNED SFY 2010 SSBG SERVICE ALLOCATIONS  
LISTED BY FEDERAL SSBG SERVICE DEFINITIONS NUMBERS 1 - 29  
INDICATING THE RESPONSIBLE DES ADMINISTRATION  
THAT PROVIDES OR CONTRACTS FOR THE SERVICE**

SVC CODE	SERVICE (SVC) TITLE	ADMIN	ALLOCATION
5.	Day Care Services--Adults	DAAS	\$ 333,241
		RSA	\$ -
		EA	\$ -
		CCA	\$ -
		DDD	\$ -
		CPIP	\$ -
		ACYF	\$ -
		TOTAL	\$ 333,241
6.	Day Care Services--Children	DAAS	\$ -
		RSA	\$ -
		EA	\$ -
		CCA	\$ 284,076
		DDD	\$ -
		CPIP	\$ -
		ACYF	\$ 38,920
		TOTAL	\$ 322,996
7.	Education and Training Services	DAAS	\$ -
		RSA	\$ -
		EA	\$ -
		CCA	\$ -
		DDD	\$ -
		CPIP	\$ -
		ACYF	\$ -
		TOTAL	\$ -
8.	Employment Services	DAAS	\$ -
		RSA	\$ -
		EA	\$ -
		CCA	\$ -
		DDD	\$ -
		CPIP	\$ 46,941
		ACYF	\$ -
		TOTAL	\$ 46,941

**PLANNED SFY 2010 SSBG SERVICE ALLOCATIONS  
LISTED BY FEDERAL SSBG SERVICE DEFINITIONS NUMBERS 1 - 29  
INDICATING THE RESPONSIBLE DES ADMINISTRATION  
THAT PROVIDES OR CONTRACTS FOR THE SERVICE**

SVC CODE	SERVICE (SVC) TITLE	ADMIN	ALLOCATION	
9.	Family Planning Services	DAAS	\$	-
		RSA	\$	-
		EA	\$	-
		CCA	\$	-
		DDD	\$	-
		CPIP	\$	-
		ACYF	\$	-
		TOTAL	\$	-
10.	Foster Care Services for Adults	DAAS	\$	-
		RSA	\$	-
		EA	\$	-
		CCA	\$	-
		DDD	\$	-
		CPIP	\$	-
		ACYF	\$	-
		TOTAL	\$	-
11.	Foster Care Services for Children	DAAS	\$	-
		RSA	\$	-
		EA	\$	-
		CCA	\$	-
		DDD	\$	-
		CPIP	\$	-
		ACYF	\$	22,613,100
		TOTAL	\$	22,613,100
12.	Health Related and Home Health Services	DAAS	\$	30,478
		RSA	\$	-
		EA	\$	-
		CCA	\$	-
		DDD	\$	-
		CPIP	\$	-
		ACYF	\$	-
		TOTAL	\$	30,478

**PLANNED SFY 2010 SSBG SERVICE ALLOCATIONS  
LISTED BY FEDERAL SSBG SERVICE DEFINITIONS NUMBERS 1 - 29  
INDICATING THE RESPONSIBLE DES ADMINISTRATION  
THAT PROVIDES OR CONTRACTS FOR THE SERVICE**

SVC CODE	SERVICE (SVC) TITLE	ADMIN	ALLOCATION
13.	Home Based Services	DAAS	\$ 2,594,215
		RSA	\$ -
		EA	\$ -
		CCA	\$ -
		DDD	\$ -
		CPIP	\$ 24,992
		ACYF	\$ 1,292,955
		TOTAL	\$ 3,912,162
<hr/>			
14.	Home Delivered Meals	DAAS	\$ 886,573
		RSA	\$ -
		EA	\$ -
		CCA	\$ -
		DDD	\$ -
		CPIP	\$ -
		ACYF	\$ -
		TOTAL	\$ 886,573
<hr/>			
15.	Housing Services	DAAS	\$ 58,057
		RSA	\$ -
		EA	\$ -
		CCA	\$ -
		DDD	\$ -
		CPIP	\$ 578,219
		ACYF	\$ -
		TOTAL	\$ 636,276
<hr/>			
16.	Independent and Transitional Living Services	DAAS	\$ -
		RSA	\$ -
		EA	\$ -
		CCA	\$ -
		DDD	\$ -
		CPIP	\$ -
		ACYF	\$ -
		TOTAL	\$ -

**PLANNED SFY 2010 SSBG SERVICE ALLOCATIONS  
LISTED BY FEDERAL SSBG SERVICE DEFINITIONS NUMBERS 1 - 29  
INDICATING THE RESPONSIBLE DES ADMINISTRATION  
THAT PROVIDES OR CONTRACTS FOR THE SERVICE**

SVC CODE	SERVICE (SVC) TITLE	ADMIN	ALLOCATION
17.	Information and Referral	DAAS	\$ 18,221
		RSA	\$ -
		EA	\$ -
		CCA	\$ -
		DDD	\$ -
		CPIP	\$ 19,731
		ACYF	\$ 15,212
		TOTAL	\$ 53,164
<hr/>			
18.	Legal Services	DAAS	\$ 116,403
		RSA	\$ -
		EA	\$ -
		CCA	\$ -
		DDD	\$ -
		CPIP	\$ -
		ACYF	\$ -
		TOTAL	\$ 116,403
<hr/>			
19.	Pregnancy and Parenting Services for Young Parents	DAAS	\$ -
		RSA	\$ -
		EA	\$ -
		CCA	\$ -
		DDD	\$ -
		CPIP	\$ -
		ACYF	\$ 12,083
		TOTAL	\$ 12,083
<hr/>			
20.	Prevention and Interventior Services	DAAS	\$ 242,481
		RSA	\$ 47,936
		EA	\$ -
		CCA	\$ -
		DDD	\$ -
		CPIP	\$ 2,753,136
		ACYF	\$ 2,729,218
		TOTAL	\$ 5,772,771

**PLANNED SFY 2010 SSBG SERVICE ALLOCATIONS  
LISTED BY FEDERAL SSBG SERVICE DEFINITIONS NUMBERS 1 - 29  
INDICATING THE RESPONSIBLE DES ADMINISTRATION  
THAT PROVIDES OR CONTRACTS FOR THE SERVICE**

SVC CODE	SERVICE (SVC) TITLE	ADMIN	ALLOCATION	
21.	Protective Services for Adults	DAAS	\$	3,200,830
		RSA	\$	-
		EA	\$	-
		CCA	\$	-
		DDD	\$	-
		CPIP	\$	-
		ACYF	\$	-
		TOTAL	\$	3,200,830
<hr/>				
22.	Protective Services for Childrer	DAAS	\$	-
		RSA	\$	-
		EA	\$	-
		CCA	\$	-
		DDD	\$	-
		CPIP	\$	-
		ACYF	\$	7,867,868
		TOTAL	\$	7,867,868
<hr/>				
23.	Recreational Services	DAAS	\$	-
		RSA	\$	-
		EA	\$	-
		CCA	\$	-
		DDD	\$	-
		CPIP	\$	-
		ACYF	\$	-
		TOTAL	\$	-
<hr/>				
24.	Residential Treatment Services	DAAS	\$	-
		RSA	\$	-
		EA	\$	-
		CCA	\$	-
		DDD	\$	-
		CPIP	\$	-
		ACYF	\$	-
		TOTAL	\$	-

**PLANNED SFY 2010 SSBG SERVICE ALLOCATIONS  
LISTED BY FEDERAL SSBG SERVICE DEFINITIONS NUMBERS 1 - 29  
INDICATING THE RESPONSIBLE DES ADMINISTRATION  
THAT PROVIDES OR CONTRACTS FOR THE SERVICE**

SVC CODE	SERVICE (SVC) TITLE	ADMIN	ALLOCATION
25.	Special Services for Persons with Developmental or Physical Disabilities	DAAS	\$ -
		RSA	\$ 1,030,852
		EA	\$ -
		CCA	\$ -
		DDD	\$ 1,662,723
		CPIP	\$ -
		ACYF	\$ -
	<b>TOTAL</b>	<b>\$ 2,693,575</b>	
26.	Special Services for Youth Involved in or at Risk of Involvement with Criminal Activity	DAAS	\$ -
		RSA	\$ -
		EA	\$ -
		CCA	\$ -
		DDD	\$ -
		CPIP	\$ -
		ACYF	\$ 63,614
	<b>TOTAL</b>	<b>\$ 63,614</b>	
27.	Substance Abuse Services	DAAS	\$ -
		RSA	\$ -
		EA	\$ -
		CCA	\$ -
		DDD	\$ -
		CPIP	\$ -
		ACYF	\$ -
	<b>TOTAL</b>	<b>\$ -</b>	
28.	Transportation Services	DAAS	\$ 121,716
		RSA	\$ -
		EA	\$ -
		CCA	\$ -
		DDD	\$ -
		CPIP	\$ 54,918
		ACYF	\$ -
	<b>TOTAL</b>	<b>\$ 176,634</b>	
29.	Other Services (DES Training, Consultation, Program Occupancy)		\$ 550,300
30	<b>Total of the SFY 2010 Planned SSBG Funding Allocations Listed Above for Federal Service Definitions Numbers 1 Through 29</b>	<b>TOTAL</b>	<b>\$ 52,898,689</b>

**PLANNED SFY 2010 SSBG SERVICE ALLOCATIONS  
LISTED BY FEDERAL SSBG SERVICE DEFINITIONS NUMBERS 1 - 29  
INDICATING THE RESPONSIBLE DES ADMINISTRATION  
THAT PROVIDES OR CONTRACTS FOR THE SERVICE**

SVC CODE	SERVICE (SVC) TITLE	ADMIN	ALLOCATION
31	Administrative Costs		
		Department	\$ 5,241,598
		TOTAL \$	5,241,598

**All SFY 2010 State and Locally Planned  
SSBG Funding Allocations Listed by  
the Administration/Division  
Responsible for Providing or  
Contracting for the Services**

ACYF	\$	34,968,339
DDD	\$	1,662,723
RSA	\$	1,183,788
CCA	\$	284,076
EA	\$	22,837
CPIP	\$	4,906,383
DAAS	\$	8,610,347
CROSS-PROGRAM	\$	709,896
Other Services	\$	550,300
Administrative Costs	\$	5,241,598
TOTAL \$		58,140,287

**APPENDIX A**  
**PUBLIC NOTICE**

# PUBLIC NOTICE

Issue Date: June 9, 2009

## ARIZONA DEPARTMENT OF ECONOMIC SECURITY PUBLIC HEARINGS ON THE STATE OF ARIZONA TITLE XX SOCIAL SERVICES BLOCK GRANT (SSBG) PLAN JULY 1, 2009 – JUNE 30, 2010

The Department of Economic Security (DES) will conduct a public hearing in each District (see attached notice for hearing times and locations) to receive public comment on the above-referenced plan.

Copies of the proposed plan are available for public inspection at each of the DES District Headquarters and the other locations listed on the attached notice. You may also obtain a copy by contacting Marianne Eichinger at the address and phone number listed below.

The Department will accept oral and written comments on the plan at the public hearings, or written comments may also be mailed to the Department at the following address:

Department of Economic Security  
ATTN: Marianne Eichinger  
(602) 542-6159 Fax (602) 542-6000

1789 W. Jefferson, Site 837A  
Phoenix, AZ 85007

or

P.O. Box 6123, Site Code 837A  
Phoenix, Arizona 85005

E-mail: [meichinger@azdes.gov](mailto:meichinger@azdes.gov)

Written comments should be mailed so that the Department will receive them **before 5:00 PM, Thursday, July 2, 2009**, and should include the signature and mailing address of the person providing comments, as well as the name of any organization that person represents.

**PERSONS WITH DISABILITIES MAY REQUEST A REASONABLE ACCOMMODATION, SUCH AS A SIGN LANGUAGE INTERPRETER, BY CONTACTING THE COORDINATING PROGRAM MANAGER AT THE DISTRICT OFFICE IDENTIFIED ON THE ATTACHMENT TO THIS NOTICE. REQUESTS SHOULD BE MADE AS EARLY AS POSSIBLE TO ALLOW TIME TO ARRANGE THE ACCOMMODATION.**

**THIS DOCUMENT IS AVAILABLE IN ALTERNATIVE FORMAT BY CONTACTING MARIANNE EICHINGER, AT THE NUMBER AND ADDRESS SPECIFIED ABOVE. REQUESTS SHOULD BE MADE AS EARLY AS POSSIBLE TO ALLOW TIME TO ARRANGE THE ACCOMMODATION.**

# **APPENDIX B**

## **CERTIFICATIONS**

1. Certification Regarding Lobbying
2. Certification Regarding Drug-Free Workplace Requirements
3. Certification Regarding Debarment, Suspension and Other Responsibility Matters
4. Certification Regarding Environmental Tobacco Smoke

# CERTIFICATION REGARDING LOBBYING

## Certification for Contracts, Grants, Loans, and Cooperative Agreements

The undersigned certifies, to the best of his or her knowledge and belief, that:

(1) No Federal appropriated funds have been paid or will be paid, by or on behalf of the undersigned, to any person for influencing or attempting to influence an officer or employee of an agency, a Member of Congress, an officer or employee of Congress, or an employee of a Member of Congress in connection with the awarding of any Federal contract, the making of any Federal grant, the making of any Federal loan, the entering into of any cooperative agreement, and the extension, continuation, renewal, amendment, or modification of any Federal contract, grant, loan, or cooperative agreement.

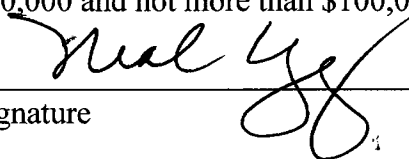
(2) If any funds other than Federal appropriated funds have been paid or will be paid to any person for influencing or attempting to influence an officer or employee of any agency, a Member of Congress, an officer or employee of Congress, or an employee of a Member of Congress in connection with this Federal contract, grant, loan, or cooperative agreement, the undersigned shall complete and submit Standard Form-LLL, "Disclosure Form to Report Lobbying," in accordance with its instructions.

(3) The undersigned shall require that the language of this certification be included in the award documents for all subawards at all tiers (including subcontracts, subgrants, and contracts under grants, loans, and cooperative agreements) and that all subrecipients shall certify and disclose accordingly. This certification is a material representation of fact upon which reliance was placed when this transaction was made or entered into. Submission of this certification is a prerequisite for making or entering into this transaction imposed by section 1352, title 31, U.S. Code. Any person who fails to file the required certification shall be subject to a civil penalty of not less than \$10,000 and not more than \$100,000 for each such failure.

## Statement for Loan Guarantees and Loan Insurance

The undersigned states, to the best of his or her knowledge and belief, that:

If any funds have been paid or will be paid to any person for influencing or attempting to influence an officer or employee of any agency, a Member of Congress, an officer or employee of Congress, or an employee of a Member of Congress in connection with this commitment providing for the United States to insure or guarantee a loan, the undersigned shall complete and submit Standard Form-LLL, "Disclosure Form to Report Lobbying," in accordance with its instructions. Submission of this statement is a prerequisite for making or entering into this transaction imposed by section 1352, title 31, U.S. Code. Any person who fails to file the required statement shall be subject to a civil penalty of not less than \$10,000 and not more than \$100,000 for each such failure.

  
\_\_\_\_\_  
Signature

Director  
\_\_\_\_\_  
Title

Arizona Department of Economic Security  
\_\_\_\_\_  
Organization

## CERTIFICATION REGARDING DRUG-FREE WORKPLACE REQUIREMENTS

This certification is required by the regulations implementing the Drug-Free Workplace Act of 1988: 45 CFR Part 76, Subpart, F. Sections 76.630(c) and (d)(2) and 76.645(a)(1) and (b) provide that a Federal agency may designate a central receipt point for STATE-WIDE AND STATE AGENCY-WIDE certifications, and for notification of criminal drug convictions. For the Department of Health and Human Services, the central point is: Division of Grants Management and Oversight, Office of Management and Acquisition, Department of Health and Human Services, Room 517-D, 200 Independence Avenue, SW Washington, DC 20201.

### Certification Regarding Drug-Free Workplace Requirements (Instructions for Certification)

1. By signing and/or submitting this application or grant agreement, the grantee is providing the certification set out below.
2. The certification set out below is a material representation of fact upon which reliance is placed when the agency awards the grant. If it is later determined that the grantee knowingly rendered a false certification, or otherwise violates the requirements of the Drug-Free Workplace Act, the agency, in addition to any other remedies available to the Federal Government, may take action authorized under the Drug-Free Workplace Act.
3. For grantees other than individuals, Alternate I applies.
4. For grantees who are individuals, Alternate II applies.
5. Workplaces under grants, for grantees other than individuals, need not be identified on the certification. If known, they may be identified in the grant application. If the grantee does not identify the workplaces at the time of application, or upon award, if there is no application, the grantee must keep the identity of the workplace(s) on file in its office and make the information available for Federal inspection. Failure to identify all known workplaces constitutes a violation of the grantee's drug-free workplace requirements.
6. Workplace identifications must include the actual address of buildings (or parts of buildings) or other sites where work under the grant takes place. Categorical descriptions may be used (e.g., all vehicles of a mass transit authority or State highway department while in operation, State employees in each local unemployment office, performers in concert halls or radio studios).
7. If the workplace identified to the agency changes during the performance of the grant, the grantee shall inform the agency of the change(s), if it previously identified the workplaces in question (see paragraph five).
8. Definitions of terms in the Nonprocurement Suspension and Debarment common rule and Drug-Free Workplace common rule apply to this certification. Grantees' attention is called, in particular, to the following definitions from these rules:

*Controlled substance* means a controlled substance in Schedules I through V of the Controlled Substances Act (21 U.S.C. 812) and as further defined by regulation (21 CFR 1308.11 through 1308.15);

*Conviction* means a finding of guilt (including a plea of nolo contendere) or imposition of sentence, or both, by any judicial body charged with the responsibility to determine violations of the Federal or State criminal drug statutes;

*Criminal drug statute* means a Federal or non-Federal criminal statute involving the manufacture,

distribution, dispensing, use, or possession of any controlled substance;

*Employee* means the employee of a grantee directly engaged in the performance of work under a grant, including: (i) All direct charge employees; (ii) All indirect charge employees unless their impact or involvement is insignificant to the performance of the grant; and, (iii) Temporary personnel and consultants who are directly engaged in the performance of work under the grant and who are on the grantee's payroll. This definition does not include workers not on the payroll of the grantee (e.g., volunteers, even if used to meet a matching requirement; consultants or independent contractors not on the grantee's payroll; or employees of subrecipients or subcontractors in covered workplaces).

#### Certification Regarding Drug-Free Workplace Requirements Alternate I. (Grantees Other Than Individuals)

The grantee certifies that it will or will continue to provide a drug-free workplace by:

- (a) Publishing a statement notifying employees that the unlawful manufacture, distribution, dispensing, possession, or use of a controlled substance is prohibited in the grantee's workplace and specifying the actions that will be taken against employees for violation of such prohibition;
  - (b) Establishing an ongoing drug-free awareness program to inform employees about --
    - (1) The dangers of drug abuse in the workplace;
    - (2) The grantee's policy of maintaining a drug-free workplace;
    - (3) Any available drug counseling, rehabilitation, and employee assistance programs; and
    - (4) The penalties that may be imposed upon employees for drug abuse violations occurring in the workplace;
  - (c) Making it a requirement that each employee to be engaged in the performance of the grant be given a copy of the statement required by paragraph (a);
  - (d) Notifying the employee in the statement required by paragraph (a) that, as a condition of employment under the grant, the employee will --
    - (1) Abide by the terms of the statement; and
    - (2) Notify the employer in writing of his or her conviction for a violation of a criminal drug statute occurring in the workplace no later than five calendar days after such conviction;
  - (e) Notifying the agency in writing, within ten calendar days after receiving notice under paragraph (d)(2) from an employee or otherwise receiving actual notice of such conviction. Employers of convicted employees must provide notice, including position title, to every grant officer or other designee on whose grant activity the convicted employee was working, unless the Federal agency has designated a central point for the receipt of such notices. Notice shall include the identification number(s) of each affected grant;
  - (f) Taking one of the following actions, within 30 calendar days of receiving notice under paragraph (d)(2), with respect to any employee who is so convicted --
    - (1) Taking appropriate personnel action against such an employee, up to and including termination, consistent with the requirements of the Rehabilitation Act of 1973, as amended; or
    - (2) Requiring such employee to participate satisfactorily in a drug abuse assistance or rehabilitation program approved for such purposes by a Federal, State, or local health, law enforcement, or other appropriate agency;
  - (g) Making a good faith effort to continue to maintain a drug-free workplace through implementation of paragraphs (a), (b), (c), (d), (e) and (f).
- (B) The grantee may insert in the space provided below the site(s) for the performance of work done in connection with the specific grant:

Place of Performance (Street address, city, county, state, zip code)

---

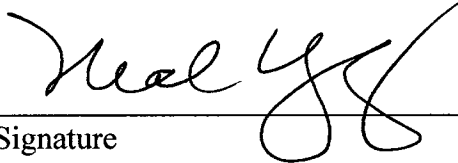
Check if there are workplaces on file that are not identified here.

Alternate II. (Grantees Who Are Individuals)

(a) The grantee certifies that, as a condition of the grant, he or she will not engage in the unlawful manufacture, distribution, dispensing, possession, or use of a controlled substance in conducting any activity with the grant;

(b) If convicted of a criminal drug offense resulting from a violation occurring during the conduct of any grant activity, he or she will report the conviction, in writing, within 10 calendar days of the conviction, to every grant officer or other designee, unless the Federal agency designates a central point for the receipt of such notices. When notice is made to such a central point, it shall include the identification number(s) of each affected grant.

[55 FR 21690, 21702, May 25, 1990]



Signature

Director

Title

Arizona Department of Economic Security

Organization

# **CERTIFICATION REGARDING DEBARMENT, SUSPENSION AND OTHER RESPONSIBILITY MATTERS**

## **Certification Regarding Debarment, Suspension, and Other Responsibility Matters--Primary Covered Transactions**

### **Instructions for Certification**

1. By signing and submitting this proposal, the prospective primary participant is providing the certification set out below.

2. The inability of a person to provide the certification required below will not necessarily result in denial of participation in this covered transaction. The prospective participant shall submit an explanation of why it cannot provide the certification set out below. The certification or explanation will be considered in connection with the department or agency's determination whether to enter into this transaction. However, failure of the prospective primary participant to furnish a certification or an explanation shall disqualify such person from participation in this transaction.

3. The certification in this clause is a material representation of fact upon which reliance was placed when the department or agency determined to enter into this transaction. If it is later determined that the prospective primary participant knowingly rendered an erroneous certification, in addition to other remedies available to the Federal Government, the department or agency may terminate this transaction for cause or default.

4. The prospective primary participant shall provide immediate written notice to the department or agency to which this proposal is submitted if at any time the prospective primary participant learns that its certification was erroneous when submitted or has become erroneous by reason of changed circumstances.

5. The terms covered transaction, debarred, suspended, ineligible, lower tier covered transaction, participant, person, primary covered transaction, principal, proposal, and voluntarily excluded, as used in this clause, have the meanings set out in the Definitions and Coverage sections of the rules implementing Executive Order 12549. You may contact the department or agency to which this proposal is being submitted for assistance in obtaining a copy of those regulations.

6. The prospective primary participant agrees by submitting this proposal that, should the proposed covered transaction be entered into, it shall not knowingly enter into any lower tier covered transaction with a person who is proposed for debarment under 48 CFR part 9, subpart 9.4, debarred, suspended, declared ineligible, or voluntarily excluded from participation in this covered transaction, unless authorized by the department or agency entering into this transaction.

7. The prospective primary participant further agrees by submitting this proposal that it will include the clause titled "Certification Regarding Debarment, Suspension, Ineligibility and Voluntary Exclusion-Lower Tier Covered Transaction," provided by the department or agency entering into this covered transaction, without modification, in all lower tier covered transactions and in all solicitations for lower tier covered transactions.

8. A participant in a covered transaction may rely upon a certification of a prospective participant in a lower tier covered transaction that it is not proposed for debarment under 48 CFR part 9, subpart 9.4, debarred, suspended, ineligible, or voluntarily excluded from the covered transaction, unless it knows that the certification is erroneous. A participant may decide the method and frequency by which it determines the eligibility of its principals. Each participant may, but is not required to, check the List of Parties Excluded from Federal Procurement and Nonprocurement Programs.

9. Nothing contained in the foregoing shall be construed to require establishment of a system of records in order to render in good faith the certification required by this clause. The knowledge and information of a participant is not required to exceed that which is normally possessed by a prudent person in the ordinary course of business dealings.

10. Except for transactions authorized under paragraph 6 of these instructions, if a participant in a

covered transaction knowingly enters into a lower tier covered transaction with a person who is proposed for debarment under 48 CFR part 9, subpart 9.4, suspended, debarred, ineligible, or voluntarily excluded from participation in this transaction, in addition to other remedies available to the Federal Government, the department or agency may terminate this transaction for cause or default.

#### Certification Regarding Debarment, Suspension, and Other Responsibility Matters--Primary Covered Transactions

(1) The prospective primary participant certifies to the best of its knowledge and belief, that it and its principals:

(a) Are not presently debarred, suspended, proposed for debarment, declared ineligible, or voluntarily excluded by any Federal department or agency;

(b) Have not within a three-year period preceding this proposal been convicted of or had a civil judgment rendered against them for commission of fraud or a criminal offense in connection with obtaining, attempting to obtain, or performing a public (Federal, State or local) transaction or contract under a public transaction; violation of Federal or State antitrust statutes or commission of embezzlement, theft, forgery, bribery, falsification or destruction of records, making false statements, or receiving stolen property;

(c) Are not presently indicted for or otherwise criminally or civilly charged by a governmental entity (Federal, State or local) with commission of any of the offenses enumerated in paragraph (1)(b) of this certification; and

(d) Have not within a three-year period preceding this application/proposal had one or more public transactions (Federal, State or local) terminated for cause or default.

(2) Where the prospective primary participant is unable to certify to any of the statements in this certification, such prospective participant shall attach an explanation to this proposal.

#### Certification Regarding Debarment, Suspension, Ineligibility and Voluntary Exclusion--Lower Tier Covered Transactions

##### Instructions for Certification

1. By signing and submitting this proposal, the prospective lower tier participant is providing the certification set out below.

2. The certification in this clause is a material representation of fact upon which reliance was placed when this transaction was entered into. If it is later determined that the prospective lower tier participant knowingly rendered an erroneous certification, in addition to other remedies available to the Federal Government the department or agency with which this transaction originated may pursue available remedies, including suspension and/or debarment.

3. The prospective lower tier participant shall provide immediate written notice to the person to which this proposal is submitted if at any time the prospective lower tier participant learns that its certification was erroneous when submitted or had become erroneous by reason of changed circumstances.

4. The terms covered transaction, debarred, suspended, ineligible, lower tier covered transaction, participant, person, primary covered transaction, principal, proposal, and voluntarily excluded, as used in this clause, have the meaning set out in the Definitions and Coverage sections of rules implementing Executive Order 12549. You may contact the person to which this proposal is submitted for assistance in obtaining a copy of those regulations.

5. The prospective lower tier participant agrees by submitting this proposal that, [[Page 33043]] should the proposed covered transaction be entered into, it shall not knowingly enter into any lower tier covered transaction with a person who is proposed for debarment under 48 CFR part 9, subpart 9.4, debarred, suspended, declared ineligible, or voluntarily excluded from participation in this covered transaction, unless authorized by the department or agency with which this transaction originated.

6. The prospective lower tier participant further agrees by submitting this proposal that it will include this clause titled "Certification Regarding Debarment, Suspension, Ineligibility and Voluntary Exclusion--Lower Tier Covered Transaction," without modification, in all lower tier covered transactions and in all

solicitations for lower tier covered transactions.

7. A participant in a covered transaction may rely upon a certification of a prospective participant in a lower tier covered transaction that it is not proposed for debarment under 48 CFR part 9, subpart 9.4, debarred, suspended, ineligible, or voluntarily excluded from covered transactions, unless it knows that the certification is erroneous. A participant may decide the method and frequency by which it determines the eligibility of its principals. Each participant may, but is not required to, check the List of Parties Excluded from Federal Procurement and Nonprocurement Programs.

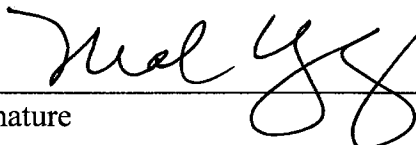
8. Nothing contained in the foregoing shall be construed to require establishment of a system of records in order to render in good faith the certification required by this clause. The knowledge and information of a participant is not required to exceed that which is normally possessed by a prudent person in the ordinary course of business dealings.

9. Except for transactions authorized under paragraph 5 of these instructions, if a participant in a covered transaction knowingly enters into a lower tier covered transaction with a person who is proposed for debarment under 48 CFR part 9, subpart 9.4, suspended, debarred, ineligible, or voluntarily excluded from participation in this transaction, in addition to other remedies available to the Federal Government, the department or agency with which this transaction originated may pursue available remedies, including suspension and/or debarment.

Certification Regarding Debarment, Suspension, Ineligibility an Voluntary Exclusion--Lower Tier Covered Transactions

(1) The prospective lower tier participant certifies, by submission of this proposal, that neither it nor its principals is presently debarred, suspended, proposed for debarment, declared ineligible, or voluntarily excluded from participation in this transaction by any Federal department or agency.

(2) Where the prospective lower tier participant is unable to certify to any of the statements in this certification, such prospective participant shall attach an explanation to this proposal.



\_\_\_\_\_  
Signature

\_\_\_\_\_  
*Director*

Title

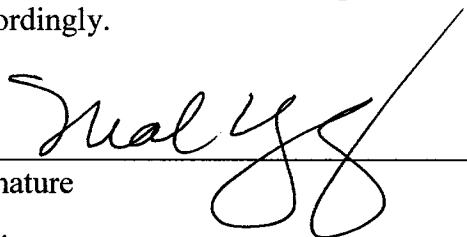
\_\_\_\_\_  
*Arizona Department of Economic Security*

Organization

## CERTIFICATION REGARDING ENVIRONMENTAL TOBACCO SMOKE

Public Law 103227, Part C Environmental Tobacco Smoke, also known as the Pro Children Act of 1994, requires that smoking not be permitted in any portion of any indoor routinely owned or leased or contracted for by an entity and used routinely or regularly for provision of health, day care, education, or library services to children under the age of 18, if the services are funded by Federal programs either directly or through State or local governments, by Federal grant, contract, loan, or loan guarantee. The law does not apply to children's services provided in private residences, facilities funded solely by Medicare or Medicaid funds, and portions of facilities used for inpatient drug or alcohol treatment. Failure to comply with the provisions of the law may result in the imposition of a civil monetary penalty of up to \$1000 per day and/or the imposition of an administrative compliance order on the responsible entity by signing and submitting this application the applicant/grantee certifies that it will comply with the requirements of the Act.

The applicant/grantee further agrees that it will require the language of this certification be included in any subawards which contain provisions for the children's services and that all subgrantees shall certify accordingly.

A handwritten signature in black ink, appearing to read "Malyg", is written over a horizontal line.

Signature

*Director*

Title

*Arizona Department of Economic Security*

Organization