
STATE OF ARIZONA SOCIAL SERVICES BLOCK GRANT PLAN 2007-2008



THE ARIZONA DEPARTMENT OF ECONOMIC SECURITY

**EQUAL OPPORTUNITY EMPLOYER/PROGRAM
FOR ALTERNATIVE FORMAT/REASONABLE ACCOMMODATIONS: (602) 542-3882**

Equal Opportunity Employer/Program ♦ Under Titles VI and VII of the Civil Rights Act of 1964 (Title VI & VII), and the Americans with Disabilities Act of 1990 (ADA), Section 504 of the Rehabilitation Act of 1973, and the Age Discrimination Act of 1975, the Department prohibits discrimination in admissions, programs, services, activities, or employment based on race, color, religion, sex, national origin, age, and disability. The Department must make a reasonable accommodation to allow a person with a disability to take part in a program, service or activity. For example, this means if necessary, the Department must provide sign language interpreters for people who are deaf, a wheelchair accessible location, or enlarged print materials. It also means that the Department will take any other reasonable action that allows you to take part in and understand a program or activity, including making reasonable changes to an activity. If you believe that you will not be able to understand or take part in a program or activity because of your disability, please let us know of your disability needs in advance if at all possible. To request this document in alternative format or for further information about this policy, contact (602) 542-3882; TTY/TDD Services: 7-1-1.

TABLE OF CONTENTS

SUBJECT	PAGE
List of Figures	iv
Introduction	1
SSBG Planning Level.....	2
TANF Block Grant Funds Transferred to the SSBG.....	2
SSBG Service Goals	2
Evaluation.....	2
Reporting on Activities Funded	2
SSBG Planning Process	3
State-Planned Services.....	3
Locally Planned Services	3
Arizona Indian Tribes.....	3
Geographic Areas	4
Public Comment and Review.....	5
Plan Amendment.....	8
Catalog of Services	8
Federal Uniform Definitions of Services.....	8
Arizona Dictionary and Taxonomy of Human Services	14
Crosswalk for Federal SSBG Services to Arizona Taxonomy SFY-2007.....	23
Service Availability.....	27
Locally and State-Planned Levels.....	28
Target Group Definitions	28
Planned Expenditures – SFY-2008.....	29

LIST OF FIGURES

SUBJECT	PAGE
Figure 1: Title XX Geographic Areas (State map)	6
Figure 2: DES Organization Chart.....	7

STATE OF ARIZONA

Title XX Social Services Block Grant Plan

July 1, 2007 – June 30, 2008

Introduction

This document provides information on the types of activities supported and the categories or characteristics of individuals served under the provisions of the Omnibus Budget Reconciliation Act of 1981, Public Law 97-35, Subtitle C - Block Grants for Social Services, which amends Title XX of the Social Security Act. The Arizona Department of Economic Security (DES) under the statutory provisions of the law administers the Arizona Social Services Block Grant (SSBG) Plan (the Plan).

The program period covered corresponds to the state fiscal year (SFY) 2008, which begins on July 1, 2007 and ends June 30, 2008. The SFY-2008 overlaps portions of federal fiscal year (FFY) 2007 and FFY-2008 which run from October 1 through September 30.

In February 2007, President Bush released his FFY-2008 budget proposal which contained a \$500 million reduction in Social Services Block Grant funding. Since then, Congress has been working on completion of their final budget package. Neither the House nor the Senate proposes any reduction in SSBG funding at this time. It is not known when the Congressional budget will be finalized.

The U.S. Department of Health and Human Services (DHHS) has posted Arizona's estimated Social Services Block Grant (SSBG) allocation under the President's Proposed SSBG Budget Reduction. The DHHS has notified DES that Arizona's SFY-2008 SSBG Plan that is due to DHHS by September 1, 2007, must be based on the reduced level that reflects the President's proposed FFY-2008 budget. As was done last year for the SFY-2007 Plan, the Department is submitting an SFY-2008 SSBG Plan to DHHS with two sets of figures. The first reflects the President's proposed reduction. The second reflects an estimated SFY-2008 allocation based upon the FFY-2007 final SSBG allocation for Arizona.

The Plan spreadsheets immediately follow the narrative portion of the Plan. There are Plan spreadsheets for each of the DES Administrations/Divisions that plan to use SSBG funding in SFY-2008. The spreadsheets show the Services, Target Group(s), Status Eligibility, Fully Funded, and the President's Budget Proposed Reduction funding for each of the Locally Planned and State Planned SSBG services. This format allows DES, local entities, and DHHS to see the funds planned both for the estimated SSBG allocation and the reduced allocation for the same services, which reflects the President's Proposed Budget Reduction.

SSBG Planning Level

The specific formula used to estimate the amount of federal SSBG funds that are available for funding the planned services during Arizona's SFY-2008 is calculated from one-fourth of Arizona's FFY-2007 allocation and three-fourths of Arizona's estimated FFY-2008 allocation.

Arizona's SFY-2008 SSBG Planning Levels

PLANNING LEVEL	SSBG FUNDS	TANF FUNDS	TOTAL
President's Proposed Reduction	\$26,401,394	\$22,613,100	\$49,014,494
Fully Funded	\$33,873,486	\$22,613,100	\$56,486,586

Since the actual allotment available to Arizona is uncertain until the FFY-2008 budget is finalized, the services and planning levels identified are estimates.

TANF Block Grant Funds Transferred to the SSBG

Arizona Laws 2007, Chapter 255, Section 28 appropriated \$22,613,100 of Arizona's Temporary Assistance to Needy Families (TANF) block grant to be transferred to the SSBG for Children Services funding.

SSBG Service Goals

Arizona's SSBG-funded services will be directed toward one or more of the following federal goals:

- I. Achieve or maintain economic self-support to prevent, reduce, or eliminate dependency.
- II. Achieve or maintain self-sufficiency, including reduction or prevention of dependency.
- III. Prevent or remedy neglect, abuse, or exploitation of children and adults unable to protect their own interests and preserving, rehabilitating, and reunifying families.
- IV. Prevent or reduce inappropriate institutional care by providing for community-based care, home-based care, or other forms of less intensive care.
- V. Secure referral or admission for institutional care when other forms of care are not appropriate or providing services to individuals in institutions.

Evaluation

The appropriate administrations within DES utilizing SSBG funds monitor and evaluate the social service programs funded by the SSBG.

Reporting on Activities Funded

DES will prepare a report on activities carried out with funds allocated in the Plan. The *Annual Report of Services Funded by the Social Services Block Grant for Fiscal Year 2007* will be available to the public after January 1, 2008. To obtain copies of this report, direct your request to the contact person at the telephone number or mailing address listed on page 5 of this Plan.

SSBG Planning Process

DES is responsible for planning and developing the Plan. This includes providing technical assistance to local planning bodies and Indian Tribes for locally planned SSBG services. Planning for the use of the balance of available SSBG funds is accomplished as a part of the Department's annual budget development process.

State-Planned Services

The Division of Developmental Disabilities (DDD); the Administration for Children, Youth and Families (ACYF); the Division of Aging and Adult Services (DAAS), formerly Adult and Aging Administration (AAA); the Office of Community Partnerships and Innovative Practices (CPIP), formerly Community Services Administration (CSA); the Rehabilitation Services Administration (RSA); the Child Care Administration (CCA); and the Employment Administration (EA) within DES perform statewide planning activities by coordinating with similar and related programs of other state and local agencies, producing planning documents, fulfilling all federal statutory responsibilities accompanying the administration of programs, and involving local planning agencies in the development of a coordinated planning effort and review in local priorities for incorporation into statewide planning products.

Locally Planned Services

A significant amount of SSBG services are provided through local service-delivery systems contracted by DES to augment state services and to respond to local needs.

Arizona's six Councils of Governments (COGs) contract with DES to facilitate the primary planning for this portion of the SSBG service-delivery system. This primary planning is accomplished by identifying regional priorities, by coordinating planning with other planning entities, and by providing locally based citizen involvement opportunities. The following chart indicates the COGs' distribution of the allocation for locally planned services.

<u>COUNCILS OF GOVERNMENTS (COGs)</u>	<u>PLANNING LEVELS</u>	
	FULLY FUNDED	PRESIDENT'S PROPOSED BUDGET REDUCTION
Name		
Maricopa Association of Governments	\$4,090,579	\$3,283,805
Pima Association of Governments	1,551,134	1,245,208
Northern Arizona Council of Governments	431,451	346,357
Western Arizona Council of Governments	500,125	401,487
Central Arizona Association of Governments	453,099	363,735
SouthEastern Arizona Governments Organization	438,169	351,750
TOTAL	\$7,464,557	\$5,992,342

Arizona Indian Tribes

Arizona Indian Reservations have been established as separate SSBG Planning and Services areas. Technical assistance in planning and developing SSBG services is provided to Tribes, upon request, by DES or by a private agency under contract with DES. Eighteen of Arizona's Tribes have designated the Inter Tribal Council of Arizona (ITCA) to plan their SSBG funded services.

Each participating reservation is allocated the following share of the state's SSBG allocation that is based on Tribe's Reservation population.

<u>ITCA and TRIBES</u>	<u>PLANNING LEVELS</u>	
	FULLY FUNDED	PRESIDENT'S BUDGET PROPOSED REDUCTION
NAME of TRIBE		
AK-Chin	\$15,658	\$12,570
Camp Verde	\$21,397	\$17,177
Cocopah	\$17,040	\$13,679
Colorado River	\$26,097	\$20,950
Fort McDowell	\$16,257	\$13,051
Fort Mohave	\$19,179	\$15,396
Gila River	\$95,425	\$76,605
Havasupai	\$16,453	\$13,208
Hopi	\$96,898	\$77,787
Hualapai	\$25,374	\$20,370
Kaibab-Paiute	\$13,735	\$11,026
Pascua-Yaqui	\$25,607	\$20,557
Quechan	\$23,862	\$19,156
Salt River	\$30,744	\$24,680
San Carlos	\$92,593	\$74,331
San Juan Southern Paiute	\$12,086	\$9,702
Tonto-Apache	\$13,205	\$10,601
White Mountain	\$115,574	\$92,780
Total ITCA Services (Aging and Adult)	\$677,184	\$543,626
ITCA Planning	\$64,343	\$51,653
Tohono O'Odham (Child Care)	\$120,644	\$96,850
Navajo (Children's Services)	\$1,242,896	\$997,763
Gila River (Children's Services)	\$18,417	\$14,785
TOTALS	\$2,123,484	\$1,704,677

The ITCA planned services may be contracted with each tribal government for the amount shown. Specific services, eligibility criteria, and dollar amounts are determined during the contracting process and are not designated in this Plan.

Geographic Areas

The geographic areas for which services are planned are identified on the map on page 6. These service-planning districts correspond to DES service districts, excluding Arizona Indian reservations.

Public Comment and Review

The proposed Arizona State Fiscal Year 2008 SSBG Plan was made available to local community and Tribal social services planning agencies for review and public hearings in each of the six planning districts throughout the state. The Department announced and held public hearings at the six DES District Offices in July 2007. In addition, written comments are welcome, and may be sent to the SSBG Community Planning Coordinator at the address listed below.

Copies of the official Arizona SFY-2008 SSBG Plan may be obtained free of charge by contacting:

Arizona Department of Economic Security
John Hoag, SSBG Community Planning Coordinator
Policy and Planning Administration
1789 West Jefferson Street - Mail Site Code 837A
Phoenix, Arizona 85007
Telephone: (602) 542-6159
E-mail: JHoag@azdes.gov

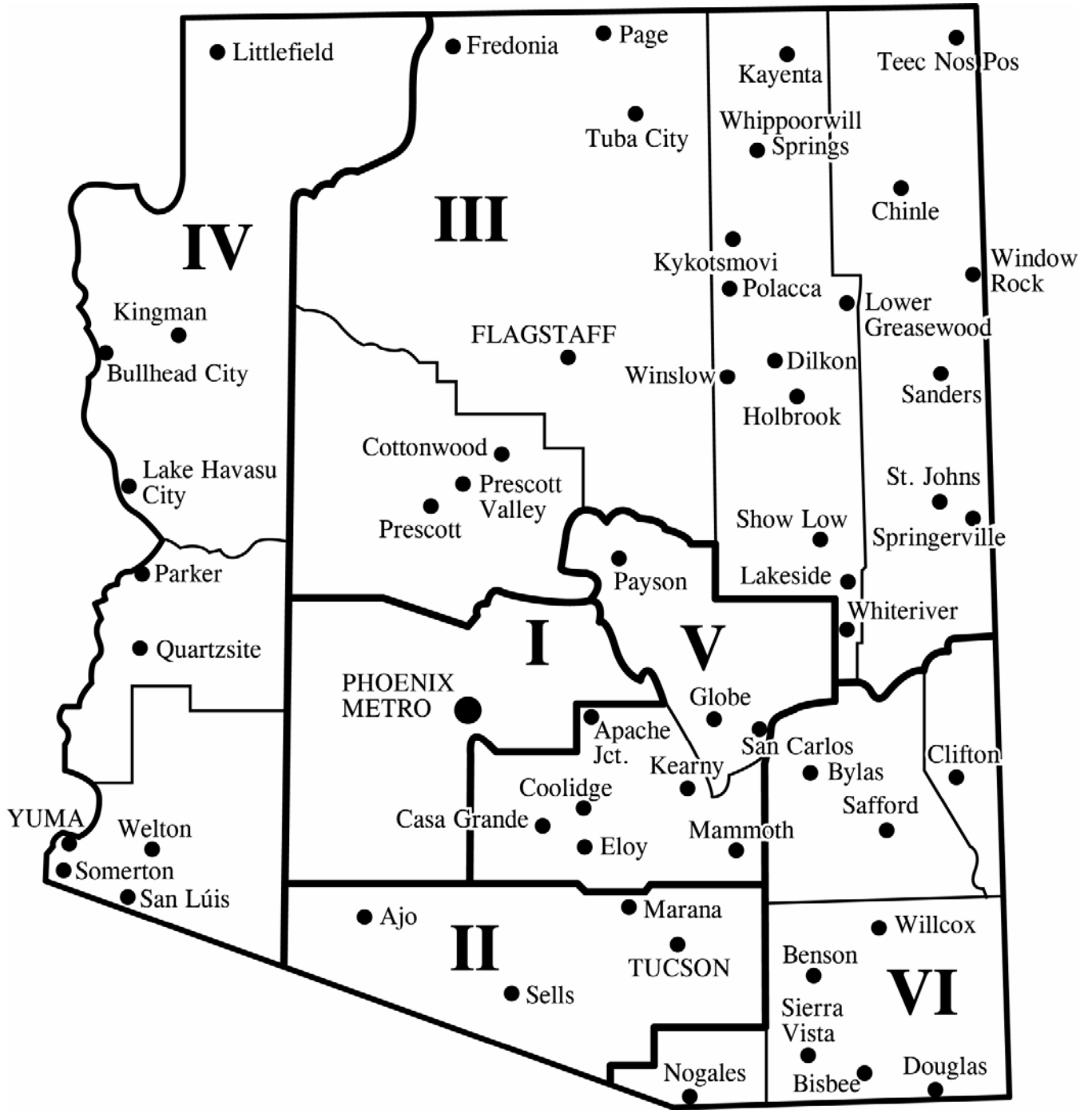


Figure 1: Title XX Geographic Areas (State map)

Arizona Department of Economic Security

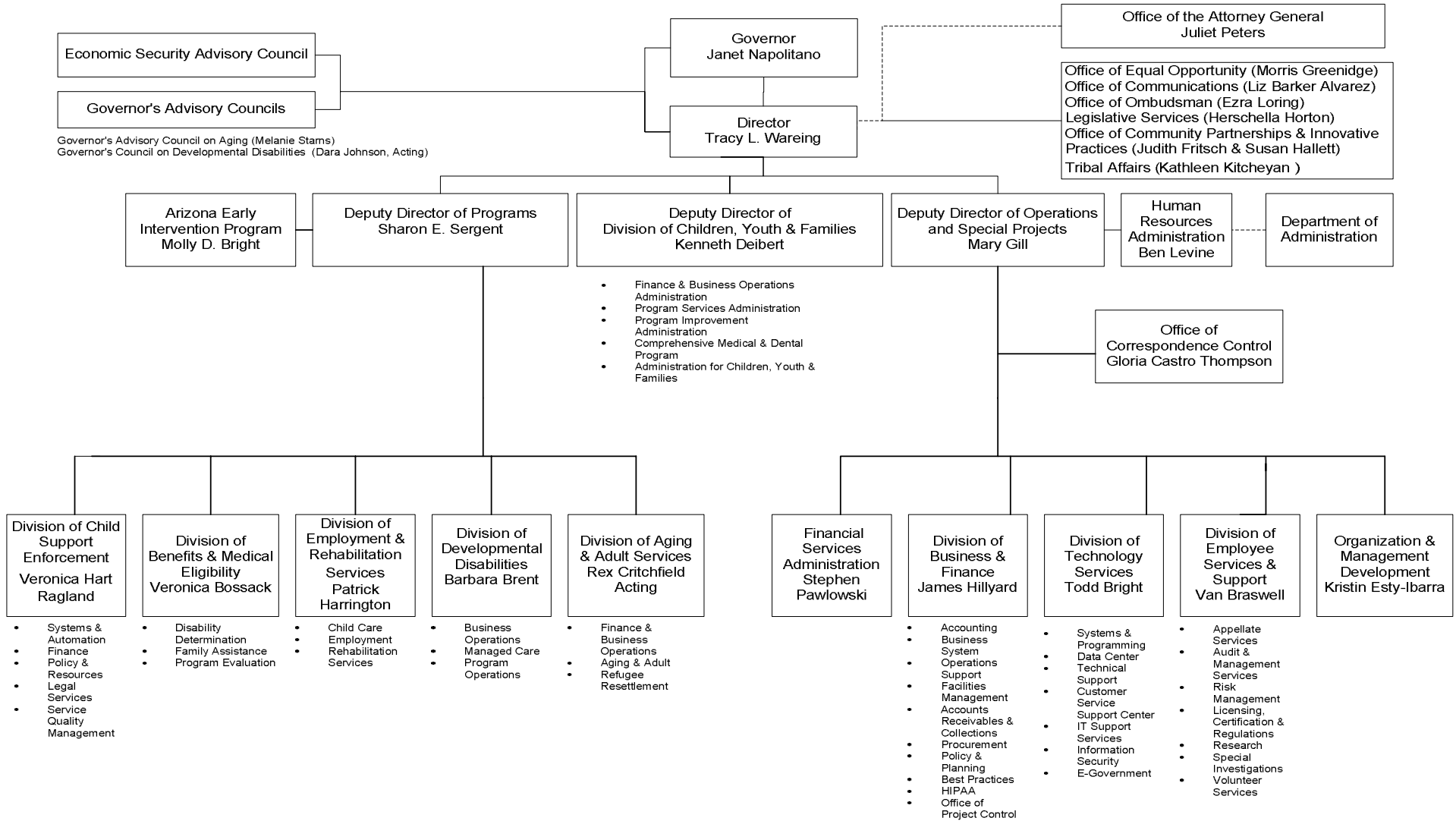


Figure 2: DES Organization Chart

Plan Amendment

The Plan may be revised throughout the year as necessary to reflect substantial changes in the activities provided that affect the overall intent of the Plan. Any substantive revisions will be made available for public review and comment from interested persons and federal and public agencies.

Service needs and program decisions may make it necessary to add services or make changes in eligibility, geographic, and service availability or the target group to which services may be directed. These changes may be made in the Department's contracting process or direct service-delivery process without modifying the Plan.

Catalog of Services

This section identifies the services that may receive SSBG funding. The services are defined as follows:

- The *Federal Uniform Definitions of Services* is a listing of the 29 titles and definitions of services that are required to be used for the purpose of reporting SSBG expenditures to the Federal Government annually.
- Services listed in the *Arizona Dictionary and Taxonomy of Human Services* are provided by DES or through purchase-of-service agreements with local community service providers.
- The *Crosswalk for Federal SSBG Services to Arizona Taxonomy SFY-2007* provides a listing of the Federal Service Titles and the corresponding Arizona Taxonomy Service Titles.

FEDERAL UNIFORM DEFINITIONS OF SERVICES

1. Adoption Services

Adoption services are those services or activities provided to assist in bringing about the adoption of a child. Component services and activities may include, but are not limited to, counseling the biological parent(s), recruitment of adoptive homes, and pre- and post- placement training and/or counseling.

2. Case Management Services

Case management services are services or activities for the arrangement, coordination, and monitoring of services to meet the needs of individuals and families. Component services and activities may include individual service plan development; counseling; monitoring, developing, securing, and coordinating services; monitoring and evaluating client progress; and assuring that clients' rights are protected.

3. Congregate Meals

Congregate meals are those services or activities designed to prepare and serve one or more meals a day to individuals in central dining areas in order to prevent institutionalization, malnutrition, and feelings of isolation. Component services or activities may include the cost of personnel, equipment, and food; assessment of nutritional and dietary needs; nutritional education and counseling; socialization; and other services such as transportation and information and referral.

4. Counseling Services

Counseling services are those services or activities that apply therapeutic processes to personal, family, situational, or occupational problems in order to bring about a positive resolution of the problem or improved individual or family functioning or circumstances. Problem areas may include family and marital relationships, parent-child problems, or drug abuse.

5. Day Care Services--Adults

Day care services for adults are those services or activities provided to adults who require care and supervision in a protective setting for a portion of a 24-hour day. Component services or activities may include opportunity for social interaction, companionship and self- education; health support or assistance in obtaining health services; counseling; recreation and general leisure time activities; meals; personal care services; plan development; and transportation.

6. Day Care Services--Children

Day care services for children (including infants, pre-schoolers, and school age children) are services or activities provided in a setting that meets applicable standards of state and local law, in a center or in a home, for a portion of a 24-hour day. Component services or activities may include a comprehensive and coordinated set of appropriate developmental activities for children, recreation, meals and snacks, transportation, health support services, social service counseling for parents, plan development, and licensing and monitoring of child care homes and facilities.

7. Education and Training Services

Education and training services are those services provided to improve knowledge or daily living skills and to enhance cultural opportunities. Services may include instruction or training in, but are not limited to, such issues as consumer education, health education, community protection and safety education, literacy education, English as a second language, and General Educational Development (G.E.D.). Component services or activities may include screening, assessment and testing; individual or group instruction; tutoring; provision of books, supplies and instructional material; counseling; transportation; and referral to community resources.

8. Employment Services

Employment services are those services or activities provided to assist individuals in securing employment or acquiring or learning skills that promote opportunities for employment. Component services or activities may include employment screening, assessment, or testing; structured job skills and job seeking skills; specialized therapy (occupational, speech, physical); special training and tutoring, including literacy training and pre-vocational training; provision of books, supplies and instructional material; counseling, transportation; and referral to community resources.

9. Family Planning Services

Family planning services are those educational, comprehensive medical or social services or activities which enable individuals, including minors, to determine freely the number and spacing of their children and to select the means by which this may be achieved. These services and activities include a broad range of acceptable and effective methods and services to limit or enhance fertility, including contraceptive methods (including natural family planning and abstinence), and the management of infertility (including referral to adoption). Specific component services and activities may include preconceptional counseling, education, and general reproductive health care, including diagnosis and treatment of infections which threaten reproductive capability. Family planning services do not include pregnancy care (including obstetric or prenatal care).

10. Foster Care Services for Adults

Foster care services for adults are those services or activities that assess the need and arrange for the substitute care and alternate living situation of adults in a setting suitable to the individual's needs. Individuals may need such services because of social, physical or mental disabilities, or as a consequence of abuse or neglect. Care may be provided in a community-based setting, or such services may arrange for institutionalization when necessary. Component services or activities include assessment of the individual's needs; case planning and case management to assure that the individual receives proper care in the placement; counseling to help with personal problems and adjusting to new situations; assistance in obtaining other necessary supportive services; determining, through periodic reviews, the continued appropriateness of and need for placement; and recruitment and licensing of foster care homes and facilities.

11. Foster Care Services for Children

Foster care services for children are those services or activities associated with the provision of an alternative family life experience for abused, neglected or dependent children, between birth and the age of majority, on the basis of a court commitment or a voluntary placement agreement signed by the parent or guardian. Services may be provided to children in foster family homes, foster homes of relatives, group homes, emergency shelters, residential facilities, child care institutions, pre-adoptive homes or supervised independent living situation. Component services or activities may include assessment of the child's needs; case planning and case management to assure that the child receives proper care in the placement; medical care as an integral but subordinate part of the service; counseling of the child, the child's parents, and the foster parents; referral and assistance in obtaining other necessary supportive services; periodical reviews to determine the continued appropriateness and need for placement; and recruitment and licensing of foster homes and child care institutions.

12. Health Related and Home Health Services

Health related and home health services are those in-home or out-of- home services or activities designed to assist individuals and families to attain and maintain a favorable condition of health. Component services and activities may include providing an analysis or assessment of an individual's health problems and the development of a treatment plan; assisting individuals to identify and understand their health needs; assisting individuals to locate, provide or secure, and utilize appropriate medical treatment, preventive medical care, and health maintenance services, including in-home health services and emergency medical services; and providing follow-up services as needed.

13. Home Based Services

Home based services are those in-home services or activities provided to individuals or families to assist with household or personal care activities that improve or maintain adequate family well-being. These services may be provided for reasons of illness, incapacity, frailty, absence of a caretaker relative, or to prevent abuse and neglect of a child or adult. Major service components include homemaker services, chore services, home maintenance services, and household management services. Component services or activities may include protective supervision of adults and/or children to help prevent abuse, temporary non-medical personal care, house-cleaning, essential shopping, simple household repairs, yard maintenance, teaching of homemaking skills, training in self-help and self-care skills, assistance with meal planning and preparation, sanitation, budgeting, and general household management.

14. Home Delivered Meals

Home-delivered meals are those services or activities designed to prepare and deliver one or more meals a day to an individual's residence in order to prevent institutionalization, malnutrition, and feelings of isolation. Component services or activities may include the cost of personnel, equipment, and food; assessment of nutritional and dietary needs; nutritional education and counseling; socialization services; and information and referral.

15. Housing Services

Housing services are those services or activities designed to assist individuals or families in locating, obtaining, or retaining suitable housing. Component services or activities may include tenant counseling; helping individuals and families to identify and correct substandard housing conditions on behalf of individuals and families who are unable to protect their own interests; and assisting individuals and families to understand leases, secure utilities, make moving arrangements and minor renovations.

16. Independent and Transitional Living Services

Independent and transitional living services are those services and activities designed to help older youth in foster care or homeless youth make the transition to independent living, or to help adults make the transition from an institution, or from homelessness, to independent living. Component services or activities may include educational and employment assistance, training in daily living skills, and housing assistance. Specific component services and activities may include supervised practice living and post-foster care services.

17. Information and Referral

Information and referral services are those services or activities designed to provide information about services provided by public and private service providers and a brief assessment of client needs (but not diagnosis and evaluation) to facilitate appropriate referral to these community resources.

18. Legal Services

Legal services are those services or activities provided by a lawyer or other person(s) under the supervision of a lawyer to assist individuals in seeking or obtaining legal help in civil matters such as housing, divorce, child support, guardianship, paternity, and legal separation. Component services or activities may include receiving and preparing cases for trial, provision of legal advice, representation at hearings, and counseling.

19. Pregnancy and Parenting Services for Young Parents

Pregnancy and parenting services are those services or activities for married or unmarried adolescent parents and their families designed to assist young parents in coping with the social, emotional, and economic problems related to pregnancy and in planning for the future. Component services or activities may include securing necessary health care and living arrangements; obtaining legal services; and providing counseling, child care education, and training in and development of parenting skills.

20. Prevention and Intervention Services

Prevention and intervention services are those services or activities designed to provide early identification and/or timely intervention to support families and prevent or ameliorate the consequences of, abuse, neglect, or family violence, or to assist in making arrangement for alternate placements or living arrangements where necessary. Such services may also be provided to prevent the removal of a child or adult from the home. Component services and activities may include investigation; assessment and/or evaluation of the extent of the problem; counseling, including mental health counseling or therapy as needed; developmental and parenting skills training; respite care; and other services including supervision, case management, and transportation.

21. Protective Services for Adults

Protective services for adults are those services or activities designed to prevent or remedy abuse, neglect or exploitation of adults who are unable to protect their own interests. Examples of situations that may require protective services are injury due to maltreatment or family violence; lack of adequate food, clothing or shelter; lack of essential medical treatment or rehabilitation services; and lack of necessary financial or other resources. Component services or activities may include investigation; immediate intervention; emergency medical services; emergency shelter; developing case plans; initiation of legal action (if needed); counseling for the individual and the family; assessment/evaluation of family circumstances; arranging alternative or improved living arrangements; preparing for foster placement, if needed; and case management and referral to service providers.

22. Protective Services for Children

Protective services for children are those services or activities designed to prevent or remedy abuse, neglect, or exploitation of children who may be harmed through physical or mental injury, sexual abuse or exploitation, and negligent treatment or maltreatment, including failure to be provided with adequate food, clothing, shelter, or medical care. Component services or activities may include immediate investigation and intervention; emergency medical services; emergency shelter; developing case plans; initiation of legal action (if needed); counseling for the child and the family; assessment/evaluation of family circumstances; arranging alternative living arrangement; preparing for foster placement, if needed; and case management and referral to service providers.

23. Recreational Services

Recreational services are those services or activities designed to provide, or assist individuals to take advantage of, individual or group activities directed towards promoting physical, cultural, and/or social development.

24. Residential Treatment Services

Residential treatment services provide short-term residential care and comprehensive treatment and services for children or adults whose problems are so severe or are such that they cannot be cared for at home or in foster care and need the specialized services provided by specialized facilities. Component services and activities may include diagnosis and psychological evaluation; alcohol and drug detoxification services; individual, family, and group therapy and counseling; remedial education and GED preparation; vocational or pre-vocational training; training in activities of daily living; supervised recreational and social activities; case management; transportation; and referral to and utilization of other services.

25. Special Services for Persons With Developmental or Physical Disabilities, or Persons With Visual or Auditory Impairments

Special services for persons with developmental or physical disabilities, or persons with visual or auditory impairments, are services or activities to maximize the potential of persons with disabilities, help alleviate the effects of physical, mental or emotional disabilities, and to enable these persons to live in the least restrictive environment possible. Component services or activities may include personal and family counseling; respite care; family support; recreation; transportation; aid to assist with independent functioning in the community; and training in mobility, communication skills, the use of special aids and appliances, and self-sufficiency skills. Residential and medical services may be included only as an integral, but subordinate, part of the services.

26. Special Services for Youth Involved in or at Risk of Involvement With Criminal Activity

Special services for youth involved in or at risk of involvement with criminal activity are those services or activities for youth who are, or who may become, involved with the juvenile justice system and their families. Components services or activities are designed to enhance family functioning and/or modify the youth's behavior with the goal of developing socially appropriate behavior and may include counseling, intervention therapy, and residential and medical services if included as an integral but subordinate part of the service.

27. Substance Abuse Services

Substance abuse services are those services or activities that are primarily designed to deter, reduce, or eliminate substance abuse or chemical dependence. Except for initial detoxification services, medical and residential services may be included but only as an integral but subordinate part of the service. Component substance abuse services or activities may include a comprehensive range of personal and family counseling methods, methadone treatment for opiate abusers, or detoxification treatment for alcohol abusers. Services may be provided in alternative living arrangements such as institutional settings and community-based halfway houses.

28. Transportation Services

Transportation services are those services or activities that provide or arrange for the travel, including travel costs, of individuals in order to access services, or obtain medical care or employment. Component services or activities may include special travel arrangements such as special modes of transportation and personnel to accompany or assist individuals or families to utilize transportation.

29. Other Services

Other services are services that do not fall within the definitions of the preceding 28 services. The definition used by the state for each of these services should appear elsewhere in the annual report.

Arizona Dictionary and Taxonomy of Human Services

- **Adaptive Aids and Devices**
A service that provides or fabricates specialized equipment that will assist persons in performing normal living skills, and any necessary installation, fitting, adjustment and training.
- **Adaptive Aids and Devices – Repair/Modification**
A service that repairs or modifies aids and devices that assist persons in performing normal living skills.
- **Administrative Services**
Services that enable the effective administration and receipt of services.
- **Adoption**
A service that provides for the certification of a family, support services to the family after a child is placed and supervision of the family until the child's adoption is finalized.
- **Adoption Services**
Services that provide for the selection of a family, placement and supervision of a child until an adoption is finalized.
- **Adoption Subsidy**
A service that provides payments for special services and/or maintenance for children who might otherwise not be adopted.
- **Adult Day Care/Adult Day Health Care**
A service that provides supervised planned care and health-related services to adults in a group setting during a portion of a 24-hour day.
- **Adult Foster Care**
A service that provides residential care and supervision of one to four adults in a family setting.
- **Advocacy**
Services that take action to protect the rights of individuals and ensure they receive appropriate services and benefits or to seek needed changes in the law and/or administrative rules to protect the rights of individuals and ensure adequate service levels.
- **Alternative Communication Training**
A service that provides for a specific curriculum that creates an opportunity for competency in recognized and accepted non-verbal medium.
- **Alternative Residential Services**
An alternative setting to an individual's own home that is licensed or certified to provide one or more of the following: room and board, health care, health related services, behavioral health services and/or habilitation for residents on a continuing basis. The setting is not a licensed nursing care institution.
- **Assessment/Evaluation**
Services that provide an evaluation to identify and analyze problems, needs and/or assets and may recommend corrective action and/or treatment.
- **Attendant Care/Personal Assistance**
A service that provides a qualified individual to supply needed services in order for an individual to remain in his/her home and/or participate in work/community activities.

Arizona Dictionary and Taxonomy of Human Services

- **Basic Education**
A service that provides instruction in educational areas necessary for an individual to function effectively.
- **Case Management**
A service or process that establishes a relationship with an individual or family in order to enhance their functioning and/or integration into the community. Appropriate services and/or benefits are identified, planned, obtained, provided, recorded, monitored, modified when necessary and/or terminated. This may include: assessment to determine their needs and eligibility when applying for/receiving services, assistance in finding necessary resources in addition to covered services to meet basic needs, assistance in obtaining entitlements, communication and coordination of care as well as follow-up of crisis contacts or missed appointments.
- **Child Care**
A service that provides supervised planned care for children during a portion of a 24-hour day.
- **Child Foster Care**
A service that provides family home care and supervision to child(ren) on a 24-hour day basis.
- **Child Support**
Services that locate absent parents, establish paternity, establish child support obligation and collect and distribute child/spousal support.
- **Chore**
A service that provides for heavy indoor cleaning and may include designated outdoor tasks.
- **Client Access, Education, and Information**
A service that provides education, information, and assistance to individuals and groups regarding the availability of and accessibility to human services.
- **Community Education and Information**
A service that provides information on, and/or instructions in, various subjects through public contact and/or meetings, printed materials and media presentations focused on a particular subject, field of interest, agency or service(s).
- **Community Services**
Services that provide a range of activities that have a measurable and major impact on causes of poverty.
- **Companion Services**
A service that provides companions and supportive services to individuals with special needs.
- **Comprehensive Service Delivery**
Services that provide two or more of the following services that assist individuals in accessing or receiving services: Protective Services, Counseling, Home Care, Home Management Training, Reassurance, Home Repair/Adaptation/Renovation, Transportation, Parent Aide Service and Case Management.
- **Comprehensive Youth Development**
A service that mobilizes volunteers who are adults to carry out programs that develop the personal fitness and character of youth.

Arizona Dictionary and Taxonomy of Human Services

- **Congregate Meals**
A service that provides for a nutritious meal containing at least 1/3 of the Recommended Dietary Allowance for an individual in a congregate setting.
- **Consultation**
A service that provides professional information and advice to assist in planning, developing, implementing and evaluating individual and service programs and in providing coordination with the professional community.
- **Coordination**
A service that promotes efficiency through the cooperation and collaboration of multiple entities concerned with the same issue or need.
- **Counseling/Intervention**
Services that provide for a wide range of personal, interpersonal, situational and functional guidance.
- **Crisis Shelter Services**
Services that provide assistance to abused individuals or families. Services include, but are not limited to both the shelter and counseling.
- **Day Care**
Services that provide for, and support the provision of, supervised planned care during a portion of a 24-hour day.
- **Day Treatment and Training**
Services that provide training, supervision, therapeutic activities and as appropriate, counseling, to promote skill development in independent living, self care, communication and social relationships.
- **Developmental Day Training**
A service that provides specialized sensorimotor, cognitive, communicative, social, interaction and behavioral training for some portion of a 24-hour day.
- **Developmental Disability Day Care**
A service that provides supervised planned care, daily living skills training, and habilitation services in a group setting during a portion of a 24-hour day.
- **Drug Abuse Counseling**
A service that provides an individual an opportunity to learn the effects of drug abuse and counsels the person on alternative life style habits.
- **Eligibility Determination**
A service that provides a decision that an individual or household is or is not qualified for services or benefits.
- **Emergency Human Services**
Services that respond to crises-related situations where there is an inability to provide for the basic needs. Services may include, but are not limited to: case management, financial, and referral.

Arizona Dictionary and Taxonomy of Human Services

- **Emergency Shelter**
A service that provides immediate shelter to persons who are without shelter or a fixed place of residence. Emergency shelter may usually be provided for a period of up to 120 days.
- **Employment Related Services**
Services that provide outreach, intake, eligibility, placement and follow-up activities in support of obtaining employment. Services may include, but are not limited to: occupational/vocational education, assessment, basic education, work experience, counseling, case management, job development and placement, work adjustment training, supported employment, supported employment extended, work exploration, and pre-vocational training.
- **Employment Services**
Services that provide activities and assistance in support of finding, entering or retaining a job for individuals or groups.
- **Exemplary Youth Work Program**
Services that provide various employment-related training activities for youth. Services may include, but are not limited to: occupational/vocational education, assessment, basic education, work experience, counseling, case management and job placement.
- **Family Planning**
A service that provides assistance to individuals to voluntarily implement plans to determine the number and spacing of children.
- **Food Administration**
A service that provides for the storage, handling and distribution of food products.
- **General Transportation**
A service that provides or assists in obtaining various types of transportation for specific needs.
- **Group Home Care**
A licensed facility for the 24-hour care and supervision of individuals.
- **Habilitation Services**
Services that provide a variety of interventions designed to maximize the functioning of persons with developmental disabilities. Services may include, but are not limited to: habilitative therapies, special developmental skills, behavior intervention and sensorimotor development.
- **Home Care**
Services that provide individuals who are at-risk of institutionalization with coordinated in-home support needed to remain at home. Services may include, but are not limited to: attendant care/personal assistance, housekeeping/homemaker, chore, home health aid, personal care, respite and nursing services.
- **Home Delivered Meals**
A service that provides for a nutritious meal containing at least 1/3 of the Recommended Dietary Allowance for an individual, delivered to his/her place of residence.
- **Home Health Aid**
A service that provides intermittent health maintenance continued treatment or monitoring of a health condition and supportive care for activities of daily living at the individual's place of residence.

Arizona Dictionary and Taxonomy of Human Services

- **Home Management Skills Training**
A service that provides training in activities related to routine household maintenance.
- **Home Recruitment and Study**
A service that identifies families for either permanent placements or to provide child care services, conducts training to families and prepares the home study for licensure/certification.
- **Home Repair/Renovation**
A service that provides for safety and/or structural repairs to the home.
- **Hospice**
A service that provides health care and emotional support to terminally ill individuals and their families/caregivers during the final stages of life.
- **Housekeeping/Homemaker**
A service that provides assistance in the performance of routine household activities at an individual's place of residence.
- **Housing Search and Relocation**
A service that provides assistance toward locating suitable housing.
- **Independent Living**
A service that provides for individuals living independently and possessing the skills necessary to function at a minimum level of self-sufficiency.
- **Independent Living Skills**
A service that provides interpersonal and daily living skills training and counseling to prepare individuals for independent living.
- **Information and Referral**
A service that provides or arranges for assistance to individuals to enable them to gain access to services through the provision of accurate and current information and referral to appropriate resources. Referral may involve short-term supportive assistance and follow-up.
- **In-Home Family Support**
Services that provide coordinated support services that will assist the family to remain intact or an individual to remain in his/her home.
- **Intensive Family Preservation and Reunification Services**
Services that provide intensive crisis-oriented activities to families whose children are at significant risk of out-of-home placement due to abuse and/or neglect in order to allow those children to safely remain in their own home. Services may include, but are not limited to: counseling, communication and negotiation skills, parenting skills training, home management skills, job readiness training, case management, and development of linkages to community resources.
- **Interpreter**
A service that provides a person or equipment to facilitate communication.
- **Job Development and Placement**
A service that provides assistance in obtaining employment for job-ready individuals.

Arizona Dictionary and Taxonomy of Human Services

- **Job Training**
A service that develops specific vocational skills.
- **Legal Assistance**
A service that provides consultation and representation of civil and legal matters.
- **Legal Services**
Services that provide for consultation and information based on law.
- **Mental Health Education**
A service that provides instruction utilizing a positive life style as the medium of instruction.
- **Monitoring**
A service that checks and keeps track of contractor compliance with state, federal and contractual regulations, rules and conditions.
- **Nursing**
A service that provides nursing intervention that may include patient care, coordination facilitation, and education.
- **Nutrition Education**
A service that provides individual or group instruction about food to maintain or improve development.
- **Occupational/Vocational Education**
A service that provides instruction and/or skills training in technical, business, and other trade areas. Training may be provided in a classroom or actual job setting.
- **Occupational Therapy**
A service that directs the individual's participation in selected activities to restore, maintain or improve functional skills.
- **Orientation and Mobility Training**
A service that provides skills training that assists a person in safely navigating an identified environment.
- **Outreach**
A service that provides a systematic method to identify and directly contact persons in need of services.
- **Parent Aide Service**
A service that provides a range of support services instruction and assistance to parents or caregivers to improve their skills and ability to fulfill parenting roles and responsibilities.
- **Parenting Skills Training**
A service that provides training that promotes specific parent or caregiver skills.
- **Peer Counseling**
A service that provides self-help opportunities.
- **Personal Care**
A service that provides assistance with personal physical needs.

Arizona Dictionary and Taxonomy of Human Services

- **Personal Escort**
A service that provides an escort who transports and assists an individual to perform necessary errands away from the residence.
- **Personal Living Skills Training**
A service that provides training that promotes specific self-care skills.
- **Physical Therapy**
A service that provides treatment to restore, maintain or improve a physical function.
- **Planning**
A service that identifies and analyzes priority needs, explores options, establishes goals, and develops a course of action that will bring about a desired condition or event at some specific time in the future.
- **Prevention**
Services that provide for planned efforts to prevent specific conditions, illnesses, injuries or environmental hazards that could place an individual, group or community at risk for a negative social, physical, behavioral or health outcome.
- **Prevocational Training**
A service that provides sensorimotor, cognitive, communicative, social interaction and behavioral training necessary for vocational activities.
- **Professional Family Foster Care**
Services that provide, in a family-based home, care and supervision of a child on a 24-hour basis and include specialized care and support services, which are the responsibility of the licensee who serves as the foster parent.
- **Professional Specialty**
A service that allows for the provision of services not otherwise identified separately in the Arizona Dictionary and Taxonomy of Human Services that requires special expertise, knowledge or credentials in a given area.
- **Program Administration**
A service that distributes and administers funds received for programs.
- **Program Development**
A service that researches and/or establishes a new service(s); improves, expands, or integrates an existing service(s).
- **Program Evaluation**
A service that assesses systematically the impact and/or efficiency of programs.
- **Protective Services**
Services that provide support to individuals who are in abusive, self-neglect or vulnerable situations. Services may include, but are not restricted to: financial, shelter, legal, counseling, information, and referral and follow-up.
- **Reassurance**
A service that provides a regular contact system for individuals restricted to their place of residence.

Arizona Dictionary and Taxonomy of Human Services

- **Rehabilitation Instructional Services**
Services that provide training in community living skills and activities directed toward personal and social adjustment.
- **Relinquishment and Severance**
A service that assists biological and/or legal parents in the decision and/or process of relinquishment or termination of their rights as parents.
- **Residential Living and Development**
Services that provide for varying degrees of residential care, supervision, counseling, and training in activities of daily living.
- **Respiratory Therapy**
A service that provides treatment to restore, maintain or improve breathing.
- **Respite**
Services that provide different types of respite.
- **Respite Care**
A service that provides short-term care and supervision consistent with the health needs of the person to supplement care to provide a safe living environment and/or to support or relieve caregivers for the benefit of the person.
- **Self-Help Group**
A service that provides peer intervention in a group setting.
- **Shelter**
Services that provide for care, refuge, and protection.
- **Sheltered Employment**
A service that provides a controlled and protected work environment, additional supervision and other supports for individuals engaged in remunerative work either in a sheltered workshop or in the community.
- **Social Adjustment**
A service that instructs multiple domains of a person's life for improved functioning.
- **Social Development**
Services that provide structure and instruction designed to promote improved social functioning.
- **Socialization and Recreation**
A service that promotes mentally and emotionally healthy interaction between participants and that may be organized around leisure activities.
- **Speech Therapy**
A service that provides evaluations, program recommendations and/or treatment/training in receptive and expressive language, voice, articulation and fluency.
- **Staff Development and Training**
A service that provides an organized method of improving needed staff skills.

Arizona Dictionary and Taxonomy of Human Services

- **Substance Abuse Assessment**
A service that provides for the assessment of an individual to determine substance abuse and dependence and recommend interventions and treatment.
- **Substance Abuse Screening**
A service that provides for the screening of an individual to determine the presence of alcohol or drug abuse. (Note: For Testing, reference Clinical Laboratory Service.)
- **Supervised Employment**
Services that provide for training in an area of employment under guidance of a trained supervisor.
- **Supported Employment**
A service that provides job development, assistance in matching the individual with an integrated competitive job and intensive time-limited supports to an employed individual once placed.
- **Supported Employment, Extended**
A service that provides long-term, on-going support services for an employed individual.
- **Supportive Intervention/Guidance Counseling**
A service that provides supportive intervention and/or guidance.
- **Transitional Housing**
A service that provides long-term shelter for a period of up to two years to homeless persons who are sufficiently stabilized to pursue some level of self-sufficiency, but may require additional supportive services. The goal of this service is to facilitate movement to permanent housing.
- **Transitional Shelter**
A service that provides short-term care.
- **Transportation**
Services that promote or provide mobility.
- **Unaccompanied Minors Service**
A service that provides foster care provisions for refugee minors who are in the United States without a qualified parent or legal guardian.
- **Utility Assistance**
A service that provides financial and/or non-financial aid to meet residential public service needs.
- **Volunteer Services**
A service that provides coordination of volunteer activities.
- **Work Adjustment Training**
A service that provides training in the meaning, value, and demands of work and in the development of positive attitudes toward work.
- **Work Experience**
A service that provides work situations and support services to foster and promote the transition to employment.

Crosswalk for Federal SSBG Services to the Arizona Taxonomy SFY– 2007

SSBG Services for Federal Reporting Requirements

Arizona Taxonomy Services Approved for SSBG Funding

- | | |
|------------------------------------|---|
| 1. Adoption Services | <ul style="list-style-type: none">• Adoption Services• Relinquish and Severance• Adoption Subsidy• Emergency Human Services |
| 2. Case Management Services | <ul style="list-style-type: none">• Case Management• Eligibility Determination• Coordination• Emergency Human Services• Transitional Housing |
| 3. Congregate Meals | <ul style="list-style-type: none">• Congregate Meals• Nutrition Education |
| 4. Counseling Services | <ul style="list-style-type: none">• Counseling/Intervention• Drug Abuse Counseling• Supportive Intervention/Guidance Counseling• Assessment/Evaluation• Advocacy• Professional Specialty |
| 5. Day Care Services—Adults | <ul style="list-style-type: none">• Adult Day Care/Adult Day Health Care• Day Treatment and Training• Developmental Day Training• Companion Services• Monitoring |
| 6. Day Care Services—Children | <ul style="list-style-type: none">• Child Care• Day Treatment and Training• Developmental Day Training• Monitoring• Home Recruitment and Study |
| 7. Education and Training Services | <ul style="list-style-type: none">• Alternative Communication Training• Interpreter• Basic Education |
| 8. Employment Services | <ul style="list-style-type: none">• Employment Related Services• Employment Services• Transportation |
| 9. Family Planning Services | <ul style="list-style-type: none">• Family Planning |
| 10. Foster Care Services (Adults) | <ul style="list-style-type: none">• Adult Foster Care• Home Recruitment and Study |

Crosswalk for Federal SSBG Services to the Arizona Taxonomy SFY– 2007

SSBG Services for Federal Reporting Requirements

Arizona Taxonomy Services Approved for SSBG Funding

- | | |
|---|---|
| 11. Foster Care Services (Children) | <ul style="list-style-type: none">• Child Foster Care• Home Recruitment and Study• Residential Living and Development• Professional Family Foster Care• Monitoring |
| 12. Health Related and Home Health Services | <ul style="list-style-type: none">• Nursing• Respiratory Therapy• Home Health Aid• Hospice |
| 13. Home-Based Services | <ul style="list-style-type: none">• Reassurance• Home Care Services• Housekeeping /Homemaker• Chore• Personal Care• Respite• Attendant Care/Personal Assistance• Orientation and Mobility Training• Parent Aide Service• Personal Living Skills Training• Rehabilitation Instructional Services• Administrative Services• Community Services• Planning |
| 14. Home Delivered Meals | <ul style="list-style-type: none">• Home Delivered Meals• Nutrition Education |
| 15 Housing Services | <ul style="list-style-type: none">• Housing Search/Relocation• Shelter Services• Home Repair /Renovation• Utility Assistance• Emergency Shelter• Transitional Housing• Planning |
| 16. Independent and Transitional Living | <ul style="list-style-type: none">• Unaccompanied Minors Service Skills• Independent Living |
| 17. Information and Referral | <ul style="list-style-type: none">• Information and Referral• Outreach• Community Education and Information• Client Access, Education, and Information• Coordination• Volunteer Services |
| 18. Legal Services | <ul style="list-style-type: none">• Legal Assistance |

Crosswalk for Federal SSBG Services to the Arizona Taxonomy SFY– 2007

SSBG Services for Federal Reporting Requirements

Arizona Taxonomy Services Approved for SSBG Funding

- | | |
|--|---|
| 19. Pregnancy and Parenting Services | <ul style="list-style-type: none">• Parenting Skills Training |
| 20. Prevention and Intervention | <ul style="list-style-type: none">• Supportive Intervention/Guidance Counseling• Case Management• Crisis Shelter Services• Emergency Shelter• Transitional Shelter• Intensive Family Preservation and Reunification Services• In-Home Family Support• Parent Aide Service• Self-Help Groups• Peer Counseling• Comprehensive Youth Development• Comprehensive Service Delivery• Administrative Services• Advocacy |
| 21. Protective Services for Adults | <ul style="list-style-type: none">• Protective Services (Adult)• Emergency Human Services |
| 22. Protective Services for Children | <ul style="list-style-type: none">• Protective Services (Child)• Emergency Human Services |
| 23. Recreational Services | <ul style="list-style-type: none">• Socialization and Recreation• Social Development• Comprehension Youth Development• Social Adjustment |
| 24. Residential Treatment Services | <ul style="list-style-type: none">• (Not a DES service.) |
| 25. Special Services for Persons With Developmental or Physical Disabilities or Auditory Impairments | <ul style="list-style-type: none">• Speech Therapy• Counseling/Intervention• Housekeeping/Homemaker• Chore• Respite• Adaptive Aids and Devices• Adaptive Aids and Devices – Repair/Modification• Attendant Care/Personal Service• Case Management• Habilitation Services• Job Training• Job Development and Placement• Assessment/Evaluation• Exemplary Youth Work Program• Employment Related Services• Sheltered Employment• Day Treatment and Training |

Crosswalk for Federal SSBG Services to the Arizona Taxonomy SFY– 2007

SSBG Services for Federal Reporting Requirements

Arizona Taxonomy Services Approved for SSBG Funding

- | | |
|---|---|
| 25. (continued) Special Services for Persons With Developmental or Physical Disabilities or Auditory Impairments | <ul style="list-style-type: none">• Physical Therapy• Occupational Therapy• Occupational/Vocational Education• Prevocational Training• Transportation• Socialization and Recreation• Developmental Day Training• Independent Living• Alternative/Communication• Personal Living Skills Training• Developmental Disability Day Care• Supported Employment• Supported Employment, Extended• Supportive Intervention/ Guidance Counseling• Home Management Skills Training• Home Care• Interpreter• Rehabilitation Instructional Services• Orientation and Mobility Training |
| 26. Special Services For Youth Involved in or at-Risk of Involvement with Criminal Activity | <ul style="list-style-type: none">• Prevention• Supportive Intervention/ Guidance Counseling |
| 27. Substance Abuse Services | <ul style="list-style-type: none">• Counseling and Intervention• Assessment and Evaluation• Alternative Residential Services• Case Management• Substance Abuse Screening• Substance Abuse Assessment |
| 28. Transportation Services | <ul style="list-style-type: none">• Transportation• Personal Escort |
| 29. Other Services | <ul style="list-style-type: none">• DES Training• Planning• Administration• Consultation• Other Expenses |

** SSBG funds may not be used for direct monetary payments to SSBG clients, purchase of land, build buildings, public school system, and professional medical care. However, there are exceptions that allow the use of SSBG funds for some of these items under certain circumstances.*

Service Availability

The Geographic Coverage, Target Group Eligibility, and Status Eligibility sections are identified below and provide the primary basis for determining eligibility for service. In addition to these areas, service availability will be determined on the basis of programmatic need for service. More specific service availability criteria may be specified in the purchase-of-service contracts with provider agencies or in the specific rule of the Social Services Operating Manual. An individual who is determined to be eligible under the above criteria shall not be denied access to services because of any other condition, although providers may use waiting lists and/or set priorities for services based on level of need for the service.

A. Service

This column lists the services available in the geographic area. Eligibility for service may vary from one geographic area to another, and services may only be available in certain areas of the state. Some services may be identified as being available on a statewide basis.

B. Target Group Eligibility

This column identifies the types of individuals eligible for service. The most common target groups identified are adults, children, elderly, persons with disabilities, developmentally disabled, and adults/families/children. The definitions of these target groups are identified on page 28. Combinations of target groups may be identified (e.g., elderly persons with disabilities would be designated as "ELD/PWD"). Also, there may be characteristics added to the target groups (e.g., ELD/PWD/Blind) that further clarify availability of service.

C. Status Eligibility

This column identifies the financial category for which individuals must qualify in order to be eligible for service. Arizona does not require a means test for SSBG-funded services. Children and their families who receive services that are funded with TANF funds transferred to the SSBG must have incomes less than 200 percent of the federal poverty level.

- 1. Income Eligibility TANF/SSBG Funds** - Services funded by TANF are restricted, transferred funds to SSBG as required by 42 U.S.C. Part A, Title IV, Sec. 404, (d) (3) (B), which reads:

EXCEPTION RELATING TO TITLE XX PROGRAMS. All amounts paid to a state under this part that are used to carry out state programs pursuant to Title XX shall be used only to carry out programs and services to children and their families whose income is less than 200 percent of the income official poverty line (as defined by the Office of Management and Budget, revised annually...Act of 1981) applicable to a family of the size involved.

- 2. Income Eligibility Child Care** - The Child Care Administration provides child-care assistance to support working families with incomes at or below 165 percent of the federal poverty level. Working families whose incomes are at or below 100 percent of the federal poverty level and working families that are transitioning off of cash assistance with incomes at or below 165 percent of the federal poverty level receive priority status for services. Families referred by Child Protective Services (CPS), children receiving CPS foster care, and families who are receiving cash assistance and are participating in the EA-Jobs program and/or who are employed receive services without regard to income.

- 3. Group** - All individuals within a specific target group are financially eligible.

4. **Unemployed** - Service availability is determined on an individual's employment status. Financial income status levels may also be applied. The specific eligibility criteria shall be identified in the contract document with purchase-of-service providers.
5. **Homeless** - Individuals who have been evicted from a residence, who are residing in an emergency shelter, or who are without a regular nighttime residence and who are without family or friends that are able or willing to share their residence.

D. Locally and State-Planned Levels

These columns represent estimates of the federal dollars that may be utilized for the delivery of the services.

E. Target Group Definitions

1. **Adults** (AD) - Any individual 18 years of age or older.
2. **Children** (CH) - Any individual under the age of 18.
3. **Developmentally Disabled Individuals** (DD) - Any individual having a severe, chronic disability attributable to a cognitive disability, cerebral palsy, epilepsy or autism, and which manifested itself before age 18, is likely to continue indefinitely and results in substantial functional limitations in three or more areas of the major life activities; and reflects the need for a combination and sequence of special, interdisciplinary or generic care, treatment, or other services, which are of lifelong or extended duration and are individually planned or coordinated.
 - "Major life activities" for the purpose of this definition are: (1) self-care, (2) receptive and expressive language, (3) learning, (4) mobility, (5) self-direction, (6) capacity for independent living, and (7) economic self-sufficiency.
4. **Elderly** (ELD) - Any individual 60 years of age or older.
5. **Persons with Disabilities** (PWD) - Any individual who has a physical or mental impairment that substantially limits one or more major life activities and has a diagnosis of such impairment.
 - "Physical or Mental Impairment" includes physiological conditions, cosmetic disfigurements, anatomical losses or mental disorders.
 - "Diagnosis" means diagnosed or classified as having a physical or mental impairment by a doctor of medicine, a doctor of osteopathy or a psychologist certified by either the Arizona State Board of Psychologist Examiners or the Department of Education.
 - "Major life activities" for the purpose of this definition are: (1) self-care, (2) receptive and expressive language, (3) learning, (4) mobility, (5) self-direction, (6) capacity for independent living, and (7) economic self-sufficiency.
6. **Adults/Families/Children** (AFC) - Any individual or family.

**ADMINISTRATION FOR CHILDREN, YOUTH, AND FAMILIES (ACYF)
SFY-2008**

DISTRICT I (MARICOPA COUNTY)			FULLY FUNDED		PRESIDENT'S BUDGET PROPOSED REDUCTION	
SERVICES	TARGET GROUP	STATUS ELIG.	LOCAL PLANNED	LOCAL and STATE	LOCAL PLANNED	LOCAL and STATE
Case Management	Pregnancy / Parenting Youth	Group	\$ 38,283	\$ 38,283	\$ 30,931	\$ 30,931
Counseling/Interventor	AFC	Group	\$ -	\$ 183,484	\$ -	\$ 147,296
Supportive Intervention / Guidance Counseling	Children At High Risk	Group	\$ 47,021	\$ 47,021	\$ 37,748	\$ 37,748
Crisis Shelter Services	Children And Runaway Children	Group	\$ 69,217	\$ 78,133	\$ 55,566	\$ 62,723
DISTRICT I TOTALS			\$ 154,521	\$ 346,921	\$ 124,245	\$ 278,698

DISTRICT II (PIMA COUNTY)			FULLY FUNDED		PRESIDENT'S BUDGET PROPOSED REDUCTION	
SERVICES	TARGET GROUP	STATUS ELIG.	LOCAL PLANNED	LOCAL and STATE	LOCAL PLANNED	LOCAL and STATE
Case Management	Children and 18 & 19 year old Adults	Homeless / Near Homeless	\$ 38,747	\$ 38,747	\$ 31,105	\$ 31,105
Counseling/Intervention	Children - Short Term	Group	\$ 11,462	\$ 11,462	\$ 22,600	\$ 22,600
Transitional Shelter	Youth	Group	\$ 41,517	\$ 41,517	\$ 19,930	\$ 19,930
Supportive Intervention / Guidance Counseling	Adults	Group	\$ 157,125	\$ 157,125	\$ 126,136	\$ 126,136
Supportive Intervention / Guidance Counseling	Rural Adults & Children	Group	\$ 15,486	\$ 15,486	\$ 12,432	\$ 12,432
Supportive Intervention / Guidance Counseling	Children & Their Families	Group	\$ 99,586	\$ 99,586	\$ 79,945	\$ 79,945
Supportive Intervention / Guidance Counseling	Adults / Problem Pregnancies	Group	\$ 6,721	\$ 6,721	\$ 5,395	\$ 5,395
Supportive Intervention / Guidance Counseling	Children / Problem Pregnancies	Group	\$ -	\$ -	\$ -	\$ -
Counseling/Interventor	AFC	Group	\$ -	\$ 33,568	\$ -	\$ 26,947
DISTRICT II TOTALS			\$ 370,644	\$ 404,212	\$ 297,543	\$ 324,490

**ADMINISTRATION FOR CHILDREN, YOUTH, AND FAMILIES (ACYF)
SFY-2008**

DISTRICT III (APACHE, COCONINO, NAVAJO, YAVAPAI COUNTIES)			FULLY FUNDED		PRESIDENT'S BUDGET PROPOSED REDUCTION	
SERVICES	TARGET GROUP	STATUS ELIG.	LOCAL PLANNED	LOCAL and STATE	LOCAL PLANNED	LOCAL and STATE
COCONINO COUNTY						
Supportive Intervention / Guidance Counseling	All	Group	\$ 30,000	\$ 30,000	\$ 24,083	\$ 24,083
COCONINO TOTALS			\$ 30,000	\$ 30,000	\$ 24,083	\$ 24,083
YAVAPAI COUNTY						
Community Education & Information	Teen Pregnancy Prev.	Group	\$ 12,083	\$ 12,083	\$ 9,700	\$ 9,700
Supportive Intervention / Guidance Counseling	All	Group	\$ 12,083	\$ 12,083	\$ 9,700	\$ 9,700
YAVAPAI TOTALS			\$ 24,166	\$ 24,166	\$ 19,400	\$ 19,400
DISTRICT WIDE						
Counseling/Interventior	Children	Group	\$ -	\$ 7,462	\$ -	\$ 5,990
Crisis Shelter Services	Children	Group	\$ -	\$ 11,188	\$ -	\$ 8,981
DISTRICT WIDE TOTALS			\$ -	\$ 18,650	\$ -	\$ 14,972
DISTRICT III TOTALS			\$ 54,166	\$ 72,816	\$ 43,483	\$ 58,455

DISTRICT IV (LA PAZ, MOHAVE, YUMA COUNTIES)			FULLY FUNDED		PRESIDENT'S BUDGET PROPOSED REDUCTION	
SERVICES	TARGET GROUP	STATUS ELIG.	LOCAL PLANNED	LOCAL and STATE	LOCAL PLANNED	LOCAL and STATE
YUMA COUNTY						
Supportive Intervention / Guidance Counseling	Children	Group	\$ -	\$ -	\$ -	\$ -
Supportive Intervention / Guidance Counseling	AFC	Group	\$ -	\$ -	\$ -	\$ -
YUMA TOTALS			\$ -	\$ -	\$ -	\$ -
MOHAVE COUNTY						
Supportive Intervention / Guidance Counseling	AFC	Group	\$ 20,752	\$ 20,752	\$ 16,303	\$ 16,303
Parenting Skills Training	AFC	Group	\$ -	\$ -	\$ -	\$ -
MOHAVE TOTALS			\$ 20,752	\$ 20,752	\$ 16,303	\$ 16,303
DISTRICT WIDE						
Counseling/Interventior	AFC	Group	\$ -	\$ 33,571	\$ -	\$ 26,950
DISTRICT WIDE TOTALS			\$ -	\$ 33,571	\$ -	\$ 26,950
DISTRICT IV TOTALS			\$ 20,752	\$ 54,323	\$ 16,303	\$ 43,253

**ADMINISTRATION FOR CHILDREN, YOUTH, AND FAMILIES (ACYF)
SFY-2008**

DISTRICT V (GILA, PINAL COUNTIES)			FULLY FUNDED		PRESIDENT'S BUDGET PROPOSED REDUCTION	
SERVICES	TARGET GROUP	STATUS ELIG.	LOCAL PLANNED	LOCAL and STATE	LOCAL PLANNED	LOCAL and STATE
GILA COUNTY						
Prevention	AFC	Group	\$ 4,840	\$ 4,840	\$ 3,885	\$ 3,885
Supportive Intervention / Guidance Counseling	AFC	Group	\$ 8,605	\$ 8,605	\$ 6,908	\$ 6,908
GILA TOTALS			\$ 13,445	\$ 13,445	\$ 10,793	\$ 10,793
PINAL COUNTY						
Prevention	AFC	Group	\$ 11,832	\$ 11,832	\$ 9,498	\$ 9,498
Supportive Intervention / Guidance Counseling	AFC	Group	\$ 28,506	\$ 28,506	\$ 22,884	\$ 22,884
PINAL TOTALS			\$ 40,338	\$ 40,338	\$ 32,382	\$ 32,382
DISTRICT WIDE						
Volunteer Services	AFC	Group	\$ -	\$ 15,212	\$ -	\$ 12,212
DISTRICT WIDE TOTALS			\$ -	\$ 15,212	\$ -	\$ 12,212
DISTRICT V TOTALS			\$ 53,783	\$ 68,995	\$ 43,175	\$ 55,387

DISTRICT VI (COCHISE, GREENLEE, GRAHAM, SANTA CRUZ COUNTIES)			FULLY FUNDED		PRESIDENT'S BUDGET PROPOSED REDUCTION	
SERVICES	TARGET GROUP	STATUS ELIG.	LOCAL PLANNED	LOCAL and STATE	LOCAL PLANNED	LOCAL and STATE
GREENLEE COUNTY						
Supportive Intervention / Guidance Counseling	AFC	Group	\$ 8,170	\$ 8,170	\$ 6,559	\$ 6,559
GREENLEE TOTALS			\$ 8,170	\$ 8,170	\$ 6,559	\$ 6,559
GRAHAM COUNTY						
Prevention	AFC	Group	\$ 19,780	\$ 19,780	\$ 15,879	\$ 15,879
GRAHAM TOTALS			\$ 19,780	\$ 19,780	\$ 15,879	\$ 15,879
DISTRICT WIDE						
Supportive Intervention / Guidance Counseling	AFC	Group	\$ 11,950	\$ 27,162	\$ 9,593	\$ 21,805
DISTRICT WIDE TOTALS			\$ 11,950	\$ 27,162	\$ 9,593	\$ 21,805
DISTRICT VI TOTALS			\$ 39,900	\$ 55,112	\$ 32,031	\$ 44,243

**ADMINISTRATION FOR CHILDREN, YOUTH, AND FAMILIES (ACYF)
SFY-2008**

TRIBAL AND STATEWIDE			FULLY FUNDED		PRESIDENT'S BUDGET PROPOSED REDUCTION	
SERVICES	TARGET GROUP	STATUS ELIG.	LOCAL PLANNED	LOCAL and STATE	LOCAL PLANNED	LOCAL and STATE
TRIBAL						
ACYF/ITCA Tribal Consultation/Planning			\$ -	\$ 31,642	\$ -	\$ 25,401
Navajo Home Based Services (Tribal Allocation, chart on page 4 of this Plan)			\$ 1,242,896	\$ 1,242,896	\$ 997,763	\$ 997,763
Gila Home Based Services (Tribal Allocation, chart on page 4 of this Plan)			\$ 18,417	\$ 18,417	\$ 14,785	\$ 14,785
TRIBAL TOTALS			\$ 1,261,313	\$ 1,292,955	\$ 1,012,548	\$ 1,037,949
ADMINISTRATION/OTHER						
In-Home Family Support			\$ -	\$ 680,213	\$ -	\$ 546,056
Protective Services for Childrer			\$ -	\$ 3,007,153	\$ -	\$ 2,414,060
Protective Services for Childrer			\$ -	\$ 4,574,414	\$ -	\$ 3,672,214
Protective Services for Children (Caseload Growth CPS In & Out-of-Home)			\$ -	\$ 286,301	\$ -	\$ 229,835
TANF/SSBG Funds Children's Services (SB 1086, Forty-Eighth Legislature, First Regular Session (AZ, 2007), pg 37 of that Senate Bill)			\$ -	\$ 22,613,100	\$ -	\$ 22,613,100
Case Management			\$ -	\$ 1,440,417	\$ -	\$ 1,156,327
Home Recruitment and Study			\$ -	\$ 38,920	\$ -	\$ 31,244
ADMIN / OTHER TOTALS			\$ -	\$ 32,640,518	\$ -	\$ 30,662,836
TRIBAL AND STATEWIDE SERVICES			\$ 1,261,313	\$ 33,933,473	\$ 1,012,548	\$ 31,700,785

NOTE: TANF Funds Transferred to

SSBG Federal Restrictions:

TANF/SSBG funds are restricted for use per 42 U.S.C. Part A, Title IV, Sec. 404, (d) (3) (B), which reads:

"EXCEPTION RELATING TO TITLE XX PROGRAMS. All amounts paid to a State under this part that are used to carry out State programs pursuant to Title XX shall be used only to carry out programs and services to children and their families whose income is less than 200 percent of the income official poverty line (as defined by the Office of Management and Budget, revised annually... Act of 1981) applicable to a family of the size involved."

ALL ACYF SERVICES	FULLY FUNDED		PRESIDENT'S BUDGET PROPOSED REDUCTION	
	LOCAL PLANNED	LOCAL and STATE	LOCAL PLANNED	LOCAL and STATE
ACYF TOTALS	\$ 1,955,079	\$ 34,935,852	\$ 1,569,328	\$ 32,505,311

**CHILD CARE ADMINISTRATION (CCA)
SFY-2008**

STATEWIDE			FULLY FUNDED		PRESIDENT'S BUDGET PROPOSED REDUCTION	
SERVICES	TARGET GROUP	STATUS ELIG.	LOCAL PLANNED	LOCAL and STATE	LOCAL PLANNED	LOCAL and STATE
Tribal Allocation (Tohono O'odham Nation for Day Care Services - Children) (Tribal Allocation, chart on page 4 of this Plan)			\$ 120,644	\$ 120,644	\$ 96,850	\$ 96,850
Day Care Services - Childrer			\$ -	\$ 239,432	\$ -	\$ 192,209
DISTRICT I TOTALS			\$ 120,644	\$ 360,076	\$ 96,850	\$ 289,059
ALL CCA SERVICES			FULLY FUNDED		PRESIDENT'S BUDGET PROPOSED REDUCTION	
			LOCAL PLANNED	LOCAL and STATE	LOCAL PLANNED	LOCAL and STATE
CCA TOTALS			\$ 120,644	\$ 360,076	\$ 96,850	\$ 289,059

**OFFICE OF COMMUNITY PARTNERSHIPS
& INNOVATIVE PRACTICES (CPIP)
SFY-2008**

DISTRICT I (MARICOPA COUNTY)			FULLY FUNDED		PRESIDENT'S BUDGET PROPOSED REDUCTION	
SERVICES	TARGET GROUP	STATUS ELIG.	LOCAL PLANNED	LOCAL and STATE	LOCAL PLANNED	LOCAL and STATE
Emergency Shelter	Victims of Domestic Violence	Group	\$ 334,136	\$ 334,136	\$ 268,238	\$ 268,238
Supportive Intervention / Guidance Counseling	Domestic Violence	Group	\$ 40,332	\$ 40,332	\$ 32,378	\$ 32,378
Emergency Shelter	Homeless Families & Individuals	Group	\$ 255,798	\$ 365,034	\$ 205,349	\$ 293,041
Transitional Housing	ELD/DD - Homeless	Group	\$ 82,739	\$ 82,739	\$ 66,421	\$ 66,421
Transitional Housing	Homeless-Individuals & Families	Group	\$ 64,376	\$ 64,376	\$ 51,680	\$ 51,680
Case Management	Pregnancy / Parenting Youth	Group	\$ 55,693	\$ 55,693	\$ 44,511	\$ 44,511
Case Management (Basic Needs)	AFC	Group	\$ 920,979	\$ 1,100,577	\$ 739,343	\$ 883,519
Case Management	Homeless	Not Ap.	\$ -	\$ 52,170	\$ -	\$ 41,881
Transportation	Homeless or Unemployed	Group	\$ 15,736	\$ 15,736	\$ 12,632	\$ 12,632
Planning	Homeless	Not Ap.	\$ -	\$ 10,000	\$ -	\$ 8,028
DISTRICT I TOTALS			\$ 1,769,789	\$ 2,120,793	\$ 1,420,552	\$ 1,702,329

**OFFICE OF COMMUNITY PARTNERSHIPS
& INNOVATIVE PRACTICES (CPIP)
SFY-2008**

DISTRICT II (PIMA COUNTY)			FULLY FUNDED		PRESIDENT'S BUDGET PROPOSED REDUCTION	
SERVICES	TARGET GROUP	STATUS ELIG.	LOCAL PLANNED	LOCAL and STATE	LOCAL PLANNED	LOCAL and STATE
Case Management	AD - low income Rural	Group	\$ 11,615	\$ 11,615	\$ 9,324	\$ 9,324
Case Management	AD - young - 18-28 HML	Group	\$ 34,855	\$ 34,855	\$ 27,981	\$ 27,981
Case Management	Adults	Homeless	\$ 32,585	\$ 32,585	\$ 26,158	\$ 26,158
Employment Related Services	Unemployed Adults	Group	\$ 46,941	\$ 46,941	\$ 37,683	\$ 37,683
Supportive Intervention / Guidance Counseling	Provide ongoing counseling for rape victims, etc.	Group	\$ 21,171	\$ 21,171	\$ 16,995	\$ 16,995
Case Management	AFC	Group	\$ -	\$ 24,944	\$ -	\$ 20,024
Crisis Shelter Services	Adults - Domestic Violence Victims	Group	\$ 49,357	\$ 57,564	\$ 39,622	\$ 46,211
Coordination	Homeless	Not Ap.	\$ -	\$ 39,800	\$ -	\$ 31,950
Legal Assistance	All Homeless	Group	\$ 97,515	\$ 97,515	\$ 78,282	\$ 78,282
Shelter	All Homeless	Group	\$ -	\$ 27,564	\$ -	\$ 22,128
DISTRICT II TOTALS			\$ 294,039	\$ 394,554	\$ 236,045	\$ 316,736

**OFFICE OF COMMUNITY PARTNERSHIPS
& INNOVATIVE PRACTICES (CPIP)
SFY-2008**

DISTRICT III (APACHE, COCONINO, NAVAJO, YAVAPAI COUNTIES)			FULLY FUNDED		PRESIDENT'S BUDGET PROPOSED REDUCTION	
SERVICES	TARGET GROUP	STATUS ELIG.	LOCAL PLANNED	LOCAL and STATE	LOCAL PLANNED	LOCAL and STATE
NAVAJO COUNTY						
Emergency Shelter	AFC - Crisis Intervention	Group	\$ 20,015	\$ 20,015	\$ 16,067	\$ 16,067
Case Management	AFC - Crisis Intervention	Group	\$ 8,006	\$ 8,006	\$ 6,427	\$ 6,427
Emergency Shelter	Homeless	Group	\$ -	\$ -	\$ -	\$ -
Transportation	AFC	Group	\$ 2,002	\$ 2,002	\$ 1,607	\$ 1,607
NAVAJO TOTALS			\$ 30,023	\$ 30,023	\$ 24,101	\$ 24,101
COCONINO COUNTY						
Emergency Shelter	AFC - Crisis Intervention	Group	\$ 7,000	\$ 7,000	\$ 5,619	\$ 5,619
Supportive Intervention / Guidance Counseling	AFC Domestic Violence	Group	\$ 7,000	\$ 7,000	\$ 5,619	\$ 5,619
Case Management	AFC - Crisis Intervention	Group	\$ 7,000	\$ 10,430	\$ 5,619	\$ 8,373
Transportation	ELD / PWD / Low Income	Group	\$ 12,000	\$ 12,000	\$ 9,633	\$ 9,633
COCONINO TOTALS			\$ 33,000	\$ 36,430	\$ 26,490	\$ 29,244
YAVAPAI COUNTY						
Case Management Assistance for Eviction Prevention	AFC - Crisis Intervention	Group	\$ 6,041	\$ 6,041	\$ 4,850	\$ 4,850
Emergency Shelter	Homeless	Group	\$ -	\$ 1,050	\$ -	\$ 843
Emergency Shelter	AFC - Crisis Intervention	Group	\$ 6,041	\$ 6,041	\$ 4,850	\$ 4,850
Case Management	AFC - Crisis Intervention	Group	\$ 12,083	\$ 12,083	\$ 9,700	\$ 9,700
Transitional Housing	Homeless	Group	\$ -	\$ 13,380	\$ -	\$ 10,741
Transportation	All	Group	\$ 21,749	\$ 21,749	\$ 17,460	\$ 17,460
YAVAPAI TOTALS			\$ 45,914	\$ 60,344	\$ 36,860	\$ 48,444
DISTRICT WIDE						
Community Services	Low Income	Group	\$ -	\$ 4,105	\$ -	\$ 3,295
Case Management	AFC	Group	\$ -	\$ 4,103	\$ -	\$ 3,294
DISTRICT WIDE TOTALS			\$ -	\$ 8,208	\$ -	\$ 6,589
DISTRICT III TOTALS			\$ 108,937	\$ 135,005	\$ 87,451	\$ 108,378

**OFFICE OF COMMUNITY PARTNERSHIPS
& INNOVATIVE PRACTICES (CPIP)
SFY-2008**

DISTRICT IV (LA PAZ, MOHAVE, YUMA COUNTIES)			FULLY FUNDED		PRESIDENT'S BUDGET PROPOSED REDUCTION	
SERVICES (CPIP)	TARGET GROUP	STATUS ELIG.	LOCAL PLANNED	LOCAL and STATE	LOCAL PLANNED	LOCAL and STATE
MOHAVE COUNTY						
Emergency Shelter	Domestic Violence	Group	\$ 50,936	\$ 50,936	\$ 40,016	\$ 40,016
MOHAVE (CPIP) TOTALS			\$ 50,936	\$ 50,936	\$ 40,016	\$ 40,016
YUMA COUNTY						
Emergency Shelter	Domestic Violence	Group	\$ -	\$ -	\$ -	\$ -
Emergency Shelter	AFC	Group	\$ 28,159	\$ 28,159	\$ 22,123	\$ 22,123
Emergency Shelter	Homeless	Group	\$ -	\$ 14,750	\$ -	\$ 11,841
YUMA (CPIP) TOTALS			\$ 28,159	\$ 42,909	\$ 22,123	\$ 33,964
DISTRICT WIDE						
Community Services	Low Income	Group	\$ -	\$ 15,551	\$ -	\$ 12,484
DISTRICT WIDE (CPIP) TOTALS			\$ -	\$ 15,551	\$ -	\$ 12,484
DISTRICT IV (CPIP) TOTALS			\$ 79,095	\$ 109,396	\$ 62,139	\$ 86,464

DISTRICT V (GILA, PINAL COUNTIES)			FULLY FUNDED		PRESIDENT'S BUDGET PROPOSED REDUCTION	
SERVICES	TARGET GROUP	STATUS ELIG.	LOCAL PLANNED	LOCAL and STATE	LOCAL PLANNED	LOCAL and STATE
GILA COUNTY						
Emergency Shelter	Domestic Violence	Group	\$ 26,620	\$ 26,620	\$ 21,370	\$ 21,370
Community Services	Low Income	Group	\$ -	\$ 695	\$ -	\$ 558
Case Management	AFC	Group	\$ 8,352	\$ 9,291	\$ 6,705	\$ 7,459
GILA TOTALS			\$ 34,972	\$ 36,606	\$ 28,075	\$ 29,387
PINAL COUNTY						
Emergency Shelter	Domestic Violence	Group	\$ 52,719	\$ 52,719	\$ 42,321	\$ 42,321
Case Management	AFC	Group	\$ 16,703	\$ 22,807	\$ 13,409	\$ 18,309
PINAL TOTALS			\$ 69,422	\$ 75,526	\$ 55,730	\$ 60,630
DISTRICT V TOTALS			\$ 104,394	\$ 112,132	\$ 83,805	\$ 90,017

**OFFICE OF COMMUNITY PARTNERSHIPS
& INNOVATIVE PRACTICES (CPIP)
SFY-2008**

DISTRICT VI (COCHISE, GREENLEE, GRAHAM, SANTA CRUZ COUNTIES)			FULLY FUNDED		PRESIDENT'S BUDGET PROPOSED REDUCTION	
SERVICES	TARGET GROUP	STATUS ELIG.	LOCAL PLANNED	LOCAL and STATE	LOCAL PLANNED	LOCAL and STATE
COCHISE COUNTY						
Case Management	Domestic Violence	Group	\$ 33,340	\$ 33,340	\$ 26,764	\$ 26,764
COCHISE TOTALS			\$ 33,340	\$ 33,340	\$ 26,764	\$ 26,764
DISTRICT WIDE						
Community Services	Low Income	Group	\$ -	\$ 6,646	\$ -	\$ 5,335
Case Management	AFC	Group	\$ -	\$ 2,422	\$ -	\$ 1,944
DISTRICT WIDE TOTALS			\$ -	\$ 9,068	\$ -	\$ 7,280
DISTRICT VI TOTALS			\$ 33,340	\$ 42,408	\$ 26,764	\$ 34,044

STATEWIDE			FULLY FUNDED		PRESIDENT'S BUDGET PROPOSED REDUCTION	
SERVICES	TARGET GROUP	STATUS ELIG.	LOCAL PLANNED	LOCAL and STATE	LOCAL PLANNED	LOCAL and STATE
CPIP Administrative Services			\$ -	\$ 384,124	\$ -	\$ 308,364
STATEWIDE						
Comprehensive Service Delivery			\$ -	\$ 1,431,535	\$ -	\$ 357,884
Coordination:						
Food Bank - AFC			\$ -	\$ 23,090	\$ -	\$ 18,536
Homeless - AFC			\$ -	\$ 35,000	\$ -	\$ 28,097
Rural Food Bank Project-Gleaning			\$ -	\$ 45,000	\$ -	\$ 36,125
Food (Bank) Administration			\$ -	\$ 158,060	\$ -	\$ 126,886
STATEWIDE ADMIN/OTHER TOTALS			\$ -	\$ 2,076,809	\$ -	\$ 875,892

ALL CPIP SERVICES	FULLY FUNDED		PRESIDENT'S BUDGET PROPOSED REDUCTION	
	LOCAL PLANNED	LOCAL and STATE	LOCAL PLANNED	LOCAL and STATE
CPIP TOTALS	\$ 2,389,594	\$ 4,991,097	\$ 1,916,756	\$ 3,213,860

**DIVISION OF AGING AND ADULT SERVICES (DAAS)
SFY-2008**

DISTRICT I (MARICOPA COUNTY)			FULLY FUNDED		PRESIDENT'S BUDGET PROPOSED REDUCTION	
SERVICES	TARGET GROUP	STATUS ELIG.	LOCAL PLANNED	LOCAL and STATE	LOCAL PLANNED	LOCAL and STATE
Adult Day Care/Health Care	ELD	Group	\$ 203,322	\$ 203,322	\$ 163,223	\$ 163,223
Adult Day Care/Health Care	PWD	Group	\$ 13,425	\$ 13,425	\$ 10,778	\$ 10,778
Congregate Meals	PWD	Group	\$ 13,425	\$ 14,898	\$ 10,778	\$ 11,960
Supportive Intervention/Guidance Counseling	ELD	Group	\$ 177,775	\$ 221,225	\$ 142,714	\$ 177,594
Home Delivered Meals	ELD	Group	\$ 411,214	\$ 411,214	\$ 330,114	\$ 330,114
Home Delivered Meals	PWD	Group	\$ 19,104	\$ 19,104	\$ 15,336	\$ 15,336
Transportation	ELD	Group	\$ 34,581	\$ 41,589	\$ 27,761	\$ 33,387
Home Care Services	ELD	Group	\$ 159,604	\$ 607,799	\$ 128,127	\$ 487,926
Home Care Services	PWD	Group	\$ 37,318	\$ 37,318	\$ 29,958	\$ 29,958
Administrative Services	ELD/PWD	Group	\$ -	\$ 187,137	\$ -	\$ 150,228
Respite	ELD/PWD	Group	\$ -	\$ 95,083	\$ -	\$ 76,330
Case Management	ELD/PWD	Group	\$ -	\$ 59,256	\$ -	\$ 47,569
Coordination	Not Ap.	Not Ap.	\$ -	\$ 18,221	\$ -	\$ 14,627
Legal Assistance	ELD	Group	\$ -	\$ 18,888	\$ -	\$ 15,163
DISTRICT I TOTALS			\$ 1,069,768	\$ 1,948,479	\$ 858,789	\$ 1,564,193

**DIVISION OF AGING AND ADULT SERVICES (DAAS)
SFY-2008**

DISTRICT II (PIMA COUNTY)			FULLY FUNDED		PRESIDENT'S BUDGET PROPOSED REDUCTION	
SERVICES	TARGET GROUP	STATUS ELIG.	LOCAL PLANNED	LOCAL and STATE	LOCAL PLANNED	LOCAL and STATE
Adult Day Care/ Health Care	ELD/AD	Group	\$ 15,000	\$ 15,000	\$ 15,000	\$ 15,000
Home Care (Personal Care, Housekeeping & Home Health)	ELD/AD	Group	\$ 274,797	\$ 341,646	\$ 173,257	\$ 226,922
Respite	ELD/AD	Group	\$ -	\$ 1,568	\$ -	\$ 1,259
Home Care (Shopper Service)	ELD/AD	Group	\$ -	\$ 7,064	\$ -	\$ 5,671
Case Management	ELD/AD	Group	\$ 341,210	\$ 597,072	\$ 327,750	\$ 533,149
Case Management - Intake	ELD/AD	Group	\$ -	\$ 32,171	\$ -	\$ 25,826
Home Repair/Renovation	ELD/AD	Group	\$ 23,809	\$ 28,002	\$ 23,809	\$ 27,175
Home Delivered Meals	ELD/AD	Group	\$ 81,507	\$ 96,354	\$ 51,284	\$ 63,203
Administrative Services	ELD/AD	Group	\$ -	\$ 5,594	\$ -	\$ 4,491
Sheltered Employment	PWD	Group	\$ -	\$ -	\$ -	\$ -
Advocacy	ELD/AD	Not Ap.	\$ -	\$ 21,116	\$ -	\$ 16,951
DISTRICT II TOTALS			\$ 736,323	\$ 1,145,587	\$ 591,100	\$ 919,647

**DIVISION OF AGING AND ADULT SERVICES (DAAS)
SFY-2008**

DISTRICT III (APACHE, COCONINO, NAVAJO, YAVAPAI COUNTIES)			FULLY FUNDED		PRESIDENT'S BUDGET PROPOSED REDUCTION	
SERVICES	TARGET GROUP	STATUS ELIG.	LOCAL PLANNED	LOCAL and STATE	LOCAL PLANNED	LOCAL and STATE
APACHE COUNTY						
Home Care Services	ELD/PWD	Group	\$ 6,379	\$ 14,435	\$ -	\$ 6,467
Case Management	ELD/PWD	Group	\$ 12,383	\$ 40,268	\$ 11,075	\$ 33,460
Administrative Services	ELD/PWD	Group	\$ -	\$ 4,379	\$ -	\$ 3,515
Home Delivered Meals	ELD/PWD	Group	\$ 12,955	\$ 16,653	\$ 12,955	\$ 15,924
Transportation	ELD/PWD	Group	\$ 7,259	\$ 7,259	\$ 7,259	\$ 7,259
APACHE TOTALS			\$ 38,976	\$ 82,994	\$ 31,289	\$ 66,625
COCONINO COUNTY						
Home Delivered Meals	ELD/PWD	Group	\$ 15,000	\$ 20,107	\$ 12,042	\$ 16,141
Respite	ELD/PWD	Group	\$ 10,000	\$ 11,443	\$ 8,028	\$ 9,186
Administrative Services	ELD/PWD	Group	\$ -	\$ 4,343	\$ -	\$ 3,486
Case Management	ELD/PWD	Group	\$ 4,000	\$ 31,503	\$ 3,211	\$ 25,290
Home Care Services	ELD/PWD	Group	\$ 2,000	\$ 5,795	\$ 1,606	\$ 4,653
Adult Day Care	ELD/PWD	Group	\$ -	\$ -	\$ -	\$ -
Transportation	ELD/PWD	Group	\$ -	\$ 7,278	\$ -	\$ 5,843
COCONINO TOTALS			\$ 31,000	\$ 80,469	\$ 24,887	\$ 64,599
NAVAJO COUNTY						
Home Care Services	ELD/PWD	Group	\$ 10,007	\$ 17,469	\$ 8,033	\$ 14,024
Administrative Services	ELD/PWD	Group	\$ -	\$ 5,947	\$ -	\$ 4,774
Case Management	ELD/PWD	Group	\$ 3,002	\$ 44,110	\$ 2,410	\$ 35,410
Home Delivered Meals	ELD/PWD	Group	\$ 11,008	\$ 15,353	\$ 8,837	\$ 12,325
NAVAJO TOTALS			\$ 24,017	\$ 82,879	\$ 19,280	\$ 66,533

**DIVISION OF AGING AND ADULT SERVICES (DAAS)
SFY-2008**

DISTRICT III (APACHE, COCONINO, NAVAJO, YAVAPAI COUNTIES) continued			FULLY FUNDED		PRESIDENT'S BUDGET PROPOSED REDUCTION	
SERVICES	TARGET GROUP	STATUS ELIG.	LOCAL PLANNED	LOCAL and STATE	LOCAL PLANNED	LOCAL and STATE
YAVAPAI COUNTY						
Home/Health Aid	ELD/PWD	Group	\$ -	\$ 30,478	\$ -	\$ 24,467
Administrative Services	ELD/PWD	Group	\$ -	\$ 13,607	\$ -	\$ 10,923
Case Management	ELD/PWD	Group	\$ 6,041	\$ 74,994	\$ 4,850	\$ 60,202
Supportive Intervention/Guidance Counseling	All	Group	\$ -	\$ 140	\$ -	\$ 112
Home Delivered Meals	ELD/PWD	Group	\$ 8,457	\$ 14,245	\$ 6,789	\$ 11,435
Respite	ELD/PWD	Group	\$ 6,041	\$ 21,415	\$ 4,850	\$ 17,190
Adult Day Care/Health Care	ELD/PWD	Group	\$ 18,124	\$ 52,761	\$ 14,549	\$ 42,355
YAVAPAI TOTALS			\$ 38,663	\$ 207,640	\$ 31,038	\$ 166,686
DISTRICT III TOTALS			\$ 132,656	\$ 453,982	\$ 106,494	\$ 364,442

DISTRICT IV (LA PAZ, MOHAVE, YUMA COUNTIES)			FULLY FUNDED		PRESIDENT'S BUDGET PROPOSED REDUCTION	
SERVICES	TARGET GROUP	STATUS ELIG.	LOCAL PLANNED	LOCAL and STATE	LOCAL PLANNED	LOCAL and STATE
LA PAZ COUNTY						
Home Care Services	ELD/PWD	Group	\$ 3,313	\$ 16,240	\$ 2,603	\$ 12,980
Administrative Services	ELD/PWD	Group	\$ -	\$ 6,681	\$ -	\$ 5,363
Case Management	ELD/PWD	Group	\$ 5,522	\$ 22,720	\$ 4,338	\$ 18,144
Home Delivered Meals	ELD/PWD	Group	\$ 13,620	\$ 13,620	\$ 10,700	\$ 10,700
Transportation	AFC	Group	\$ 14,356	\$ 14,356	\$ 11,278	\$ 11,278
LA PAZ TOTALS			\$ 36,811	\$ 73,617	\$ 28,919	\$ 58,465

**DIVISION OF AGING AND ADULT SERVICES (DAAS)
SFY-2008**

DISTRICT IV (LA PAZ, MOHAVE, YUMA COUNTIES) continued			FULLY FUNDED		PRESIDENT'S BUDGET PROPOSED REDUCTION	
SERVICES	TARGET GROUP	STATUS ELIG.	LOCAL PLANNED	LOCAL and STATE	LOCAL PLANNED	LOCAL and STATE
MOHAVE COUNTY						
Home Care Services	ELD/AD	Group	\$ 37,730	\$ 52,492	\$ 29,642	\$ 41,493
Case Management	ELD/AD	Group	\$ 18,865	\$ 53,963	\$ 14,821	\$ 42,997
Administrative Services	ELD/AD	Group	\$ -	\$ 13,965	\$ -	\$ 11,211
Home Delivered Meals	ELD/AD	Group	\$ 37,730	\$ 37,730	\$ 29,642	\$ 29,642
MOHAVE TOTALS			\$ 94,325	\$ 158,150	\$ 74,105	\$ 125,343
YUMA COUNTY						
Home Care Services	ELD/PWD	Group	\$ 25,813	\$ 30,027	\$ 20,279	\$ 23,662
Case Management	ELD/PWD	Group	\$ 21,120	\$ 56,804	\$ 16,592	\$ 45,238
Administrative Services	ELD/PWD	Group	\$ -	\$ 15,007	\$ -	\$ 12,047
Adult Day Care/Health Care	ELD/PWD	Group	\$ 11,733	\$ 11,733	\$ 9,218	\$ 9,218
Home Delivered Meals	ELD/PWD	Group	\$ 23,466	\$ 23,466	\$ 18,436	\$ 18,436
Transportation	AFC	Group	\$ 42,239	\$ 42,239	\$ 33,184	\$ 33,184
Respite	AFC	Group	\$ 4,693	\$ 4,693	\$ 3,687	\$ 3,687
Home Repair/Renovation	AFC	Group	\$ -	\$ -	\$ -	\$ -
YUMA TOTALS			\$ 129,064	\$ 183,969	\$ 101,396	\$ 145,472
DISTRICT IV TOTALS			\$ 260,200	\$ 415,736	\$ 204,420	\$ 329,281

**DIVISION OF AGING AND ADULT SERVICES (DAAS)
SFY-2008**

DISTRICT V (GILA, PINAL COUNTIES)			FULLY FUNDED		PRESIDENT'S BUDGET PROPOSED REDUCTION	
SERVICES	TARGET GROUP	STATUS ELIG.	LOCAL PLANNED	LOCAL and STATE	LOCAL PLANNED	LOCAL and STATE
GILA COUNTY						
Home Care Services	ELD/PWD	Group	\$ 19,280	\$ 19,601	\$ 15,477	\$ 15,735
Home Delivered Meals	ELD/PWD	Group	\$ 20,594	\$ 29,589	\$ 16,532	\$ 23,753
Home Repair	ELD/PWD	Group	\$ 6,477	\$ 8,380	\$ 5,200	\$ 6,727
Case Management	ELD/PWD	Group	\$ 27,218	\$ 32,180	\$ 21,850	\$ 25,833
Respite	ELD/PWD	Group	\$ -	\$ 3,665	\$ -	\$ 2,942
Administrative Services	ELD/PWD	Group	\$ -	\$ 11,798	\$ -	\$ 9,471
GILA COUNTY TOTALS			\$ 73,569	\$ 105,213	\$ 59,059	\$ 84,461
PINAL COUNTY						
Home Care Services	ELD/PWD	Group	\$ 8,806	\$ 8,903	\$ 7,069	\$ 7,147
Administrative Services	ELD/PWD	Group	\$ -	\$ 21,941	\$ -	\$ 17,614
Home Delivered Meals	ELD/PWD	Group	\$ 24,718	\$ 73,727	\$ 19,843	\$ 59,186
Home Repair/Renovation	ELD/PWD	Group	\$ 7,911	\$ 11,909	\$ 6,351	\$ 9,560
Case Management	ELD/PWD	Group	\$ 31,256	\$ 42,182	\$ 25,091	\$ 33,863
PINAL COUNTY TOTALS			\$ 72,691	\$ 158,662	\$ 58,354	\$ 127,370
DISTRICT V TOTALS			\$ 146,260	\$ 263,875	\$ 117,413	\$ 211,831

**DIVISION OF AGING AND ADULT SERVICES (DAAS)
SFY-2008**

DISTRICT VI (COCHISE, GREENLEE, GRAHAM, SANTA CRUZ COUNTIES)			FULLY FUNDED		PRESIDENT'S BUDGET PROPOSED REDUCTION	
SERVICES	TARGET GROUP	STATUS ELIG.	LOCAL PLANNED	LOCAL and STATE	LOCAL PLANNED	LOCAL and STATE
COCHISE COUNTY						
Congregate Meals	ELD/PWD	Group	\$ -	\$ 8,028	\$ -	\$ 6,445
Administrative Services	ELD/PWD	Group	\$ -	\$ 13,373	\$ -	\$ 10,735
Respite	ELD/PWD	Group	\$ -	\$ 8,727	\$ -	\$ 7,006
Home Care Services	ELD/PWD	Group	\$ 23,120	\$ 32,075	\$ 18,560	\$ 25,749
Home Delivered Meals	ELD/PWD/A D	Group	\$ 56,600	\$ 65,327	\$ 45,437	\$ 52,443
Case Management	ELD/PWD	Group	\$ 7,340	\$ 52,860	\$ 5,892	\$ 42,435
COCHISE TOTALS			\$ 87,060	\$ 180,390	\$ 69,889	\$ 144,813
GRAHAM COUNTY						
Home Care Services	ELD/PWD	Group	\$ 9,600	\$ 11,444	\$ 7,707	\$ 9,187
Administrative Services	ELD/PWD	Group	\$ -	\$ 4,782	\$ -	\$ 3,839
Home Delivered Meals	ELD/PWD	Group	\$ 24,350	\$ 24,350	\$ 19,548	\$ 19,548
Respite	ELD/PWD	Group	\$ 4,420	\$ 6,165	\$ 3,548	\$ 4,949
Case Management	ELD/PWD	Group	\$ -	\$ 23,915	\$ -	\$ 19,198
GRAHAM TOTALS			\$ 38,370	\$ 70,656	\$ 30,803	\$ 56,721

**DIVISION OF AGING AND ADULT SERVICES (DAAS)
SFY-2008**

DISTRICT VI (COCHISE, GREENLEE, GRAHAM, SANTA CRUZ COUNTIES) continued			FULLY FUNDED		PRESIDENT'S BUDGET PROPOSED REDUCTION	
SERVICES	TARGET GROUP	STATUS ELIG.	LOCAL PLANNED	LOCAL and STATE	LOCAL PLANNED	LOCAL and STATE
GREENLEE COUNTY						
Home Care Services	ELD/PWD	Group	\$ 16,530	\$ 16,530	\$ 13,270	\$ 13,270
Administrative Services	ELD/PWD	Group	\$ -	\$ 3,881	\$ -	\$ 3,116
Home Delivered Meals	ELD/PWD/A D	Group	\$ 20,350	\$ 20,350	\$ 16,336	\$ 16,336
Transportation	ELD/PWD	Group	\$ 2,400	\$ 3,046	\$ 1,927	\$ 2,445
Case Management	ELD/PWD	Group	\$ -	\$ 14,861	\$ -	\$ 11,930
GREENLEE TOTALS			\$ 39,280	\$ 58,668	\$ 31,533	\$ 47,097
SANTA CRUZ COUNTY						
Home Care Services	ELD/PWD	Group	\$ 11,200	\$ 11,530	\$ 8,991	\$ 9,256
Administrative Services	ELD/PWD	Group	\$ -	\$ 4,688	\$ -	\$ 3,763
Home Delivered Meals	ELD/PWD/A D	Group	\$ 23,750	\$ 23,750	\$ 19,066	\$ 19,066
Case Management	ELD/PWD	Group	\$ -	\$ 27,530	\$ -	\$ 22,100
SANTA CRUZ TOTALS			\$ 34,950	\$ 67,498	\$ 28,057	\$ 54,185
DISTRICT VI TOTALS			\$ 199,660	\$ 377,212	\$ 160,282	\$ 302,816

STATEWIDE			FULLY FUNDED		PRESIDENT'S BUDGET PROPOSED REDUCTION	
SERVICES	TARGET GROUP	STATUS ELIG.	LOCAL PLANNED	LOCAL and STATE	LOCAL PLANNED	LOCAL and STATE
Protective Services for Adults			\$ -	\$ 1,500,830	\$ -	\$ 1,204,825
Indian Tribes Home Based Services (Tribal Allocations Chart on page 4 of this Plan)			\$ 677,184	\$ 677,184	\$ 543,625	\$ 543,625
STATEWIDE TOTALS			\$ 677,184	\$ 2,178,014	\$ 543,625	\$ 1,748,450

ALL DAAS SERVICES	FULLY FUNDED		PRESIDENT'S BUDGET PROPOSED REDUCTION	
	LOCAL PLANNED	LOCAL and STATE	LOCAL PLANNED	LOCAL and STATE
DAAS TOTALS	\$ 3,222,051	\$ 6,782,885	\$ 2,582,123	\$ 5,440,659

**DIVISION of DEVELOPMENTAL DISABILITIES (DDD)
SFY-2008**

DISTRICT I (MARICOPA COUNTY)			FULLY FUNDED		PRESIDENT'S BUDGET PROPOSED REDUCTION	
SERVICES	TARGET GROUP	STATUS ELIG.	LOCAL PLANNED	LOCAL and STATE	LOCAL PLANNED	LOCAL and STATE
Employment Related Services	PWDD Special Employment Opportunities	Group	\$ 336,435	\$ 336,435	\$ 436,532	\$ 436,532
Employment Related Services	PWDD-In Family Home Needs Community or Specialized Employment	Group	\$ 74,761	\$ 74,761	\$ -	\$ -
Habilitation Services	PWDD Not Eligible for ALTCS	Group	\$ 35,671	\$ 35,671	\$ -	\$ -
Attendant Care Service	PWDD Not Eligible for ALTCS	Group	\$ 35,330	\$ 35,330	\$ -	\$ -
Respite	Caregivers for PWDD Not IDEA Part H Eligible	Group	\$ 36,229	\$ 36,229	\$ -	\$ -
Transportation	PWD	Group	\$ 25,350	\$ 25,350	\$ -	\$ -
DISTRICT I TOTALS			\$ 543,776	\$ 543,776	\$ 436,532	\$ 436,532

DISTRICT II (PIMA COUNTY)			FULLY FUNDED		PRESIDENT'S BUDGET PROPOSED REDUCTION	
SERVICES	TARGET GROUP	STATUS ELIG.	LOCAL PLANNED	LOCAL and STATE	LOCAL PLANNED	LOCAL and STATE
Developmental Day Training	Developmentally Delayed Children	Group	\$ 52,526	\$ 52,526	\$ 42,166	\$ 42,166
DISTRICT II TOTALS			\$ 52,526	\$ 52,526	\$ 42,166	\$ 42,166

DIVISION of DEVELOPMENTAL DISABILITIES (DDD)
SFY-2008

DISTRICT III (APACHE, COCONINO, NAVAJO, YAVAPAI COUNTIES)			FULLY FUNDED		PRESIDENT'S BUDGET PROPOSED REDUCTION	
SERVICES	TARGET GROUP	STATUS ELIG.	LOCAL PLANNED	LOCAL and STATE	LOCAL PLANNED	LOCAL and STATE
COCONINO COUNTY						
Supported Employment	DD Adults	Group	\$ 51,000	\$ 51,000	\$ 40,941	\$ 40,941
COCONINO TOTALS			\$ 51,000	\$ 51,000	\$ 40,941	\$ 40,941
YAVAPAI COUNTY						
Supported Employment	DD Adults	Group	\$ 6,041	\$ 6,041	\$ 4,850	\$ 4,850
YAVAPAI TOTALS			\$ 6,041	\$ 6,041	\$ 4,850	\$ 4,850
DISTRICT III TOTALS			\$ 57,041	\$ 57,041	\$ 45,791	\$ 45,791

DISTRICT IV (LA PAZ, MOHAVE, YUMA COUNTIES)			FULLY FUNDED		PRESIDENT'S BUDGET PROPOSED REDUCTION	
SERVICES	TARGET GROUP	STATUS ELIG.	LOCAL PLANNED	LOCAL and STATE	LOCAL PLANNED	LOCAL and STATE
YUMA COUNTY						
Job Training	DD Adults	Group	\$ 56,319	\$ 56,319	\$ 44,246	\$ 44,246
Respite In-Home Care	CH DD	Group	\$ 2,347	\$ 2,347	\$ 1,844	\$ 1,844
YUMA TOTALS			\$ 58,666	\$ 58,666	\$ 46,090	\$ 46,090
DISTRICT IV TOTALS			\$ 58,666	\$ 58,666	\$ 46,090	\$ 46,090

DISTRICT V (GILA, PINAL COUNTIES)			FULLY FUNDED		PRESIDENT'S BUDGET PROPOSED REDUCTION	
SERVICES	TARGET GROUP	STATUS ELIG.	LOCAL PLANNED	LOCAL and STATE	LOCAL PLANNED	LOCAL and STATE
GILA COUNTY						
Employment Related Services	DD	Group	\$ 30,111	\$ 30,111	\$ 24,172	\$ 24,172
GILA TOTALS			\$ 30,111	\$ 30,111	\$ 24,172	\$ 24,172
PINAL COUNTY						
Employment Related Services	DD	Group	\$ 60,222	\$ 60,222	\$ 48,344	\$ 48,344
PINAL TOTALS			\$ 60,222	\$ 60,222	\$ 48,344	\$ 48,344
DISTRICT V TOTALS			\$ 90,333	\$ 90,333	\$ 72,516	\$ 72,516

**DIVISION of DEVELOPMENTAL DISABILITIES (DDD)
SFY-2008**

DISTRICT VI (COCHISE, GREENLEE, GRAHAM, SANTA CRUZ COUNTIES)			FULLY FUNDED		PRESIDENT'S BUDGET PROPOSED REDUCTION	
SERVICES	TARGET GROUP	STATUS ELIG.	LOCAL PLANNED	LOCAL and STATE	LOCAL PLANNED	LOCAL and STATE
COCHISE COUNTY						
Employment Related Services	AD-DD	Group	\$ 44,500	\$ 44,500	\$ 35,723	\$ 35,723
COCHISE TOTALS			\$ 44,500	\$ 44,500	\$ 35,723	\$ 35,723
GRAHAM COUNTY						
Employment Related Services	AD-DD	Group	\$ 30,100	\$ 30,100	\$ 24,163	\$ 24,163
GRAHAM TOTALS			\$ 30,100	\$ 30,100	\$ 24,163	\$ 24,163
GREENLEE COUNTY						
Developmental Disability Day Care	CH-DD	Group	\$ 6,100	\$ 6,100	\$ 4,897	\$ 4,897
GREENLEE TOTALS			\$ 6,100	\$ 6,100	\$ 4,897	\$ 4,897
SANTA CRUZ COUNTY						
Employment Related Services	AD-DD	Group	\$ 48,280	\$ 48,280	\$ 38,758	\$ 38,758
SANTA CRUZ TOTALS			\$ 48,280	\$ 48,280	\$ 38,758	\$ 38,758
DISTRICT VI TOTALS			\$ 128,980	\$ 128,980	\$ 103,541	\$ 103,541

STATEWIDE			FULLY FUNDED		PRESIDENT'S BUDGET PROPOSED REDUCTION	
SERVICES	TARGET GROUP	STATUS ELIG.	LOCAL PLANNED	LOCAL and STATE	LOCAL PLANNED	LOCAL and STATE
Employment Related Services (DD Target Group)			\$ -	\$ 188,285	\$ -	\$ 151,150
Case Management (DD Target Group)			\$ -	\$ 180,863	\$ -	\$ 145,192
Counseling/Intervention (DD Target Group)			\$ -	\$ 159,212	\$ -	\$ 127,811
Case Management			\$ -	\$ 269,129	\$ -	\$ 216,049
STATEWIDE TOTALS			\$ -	\$ 797,489	\$ -	\$ 640,202

ALL DDD SERVICES			FULLY FUNDED		PRESIDENT'S BUDGET PROPOSED REDUCTION	
			LOCAL PLANNED	LOCAL and STATE	LOCAL PLANNED	LOCAL and STATE
DDD TOTALS			\$ 931,322	\$ 1,728,811	\$ 746,636	\$ 1,386,838

**EMPLOYMENT ADMINISTRATION (EA)
SFY-2008**

DISTRICT II (PIMA COUNTY)			FULLY FUNDED		PRESIDENT'S BUDGET PROPOSED REDUCTION	
SERVICES	TARGET GROUP	STATUS ELIG.	LOCAL PLANNED	LOCAL and STATE	LOCAL PLANNED	LOCAL and STATE
Case Management	Adults Single Head of Households	Group	\$ 22,837	\$ 22,837	\$ 18,333	\$ 18,333
DISTRICT II TOTALS			\$ 22,837	\$ 22,837	\$ 18,333	\$ 18,333

DISTRICT III (APACHE, COCONINO, NAVAJO, YAVAPAI COUNTIES)			FULLY FUNDED		PRESIDENT'S BUDGET PROPOSED REDUCTION	
SERVICES	TARGET GROUP	STATUS ELIG.	LOCAL PLANNED	LOCAL and STATE	LOCAL PLANNED	LOCAL and STATE
YAVAPAI COUNTY						
Employment Related Services	PWD	Group	\$ 6,041	\$ 6,041	\$ 4,850	\$ 4,850
DISTRICT III TOTALS			\$ 6,041	\$ 6,041	\$ 4,850	\$ 4,850

ALL EA SERVICES			FULLY FUNDED		PRESIDENT'S BUDGET PROPOSED REDUCTION	
			LOCAL PLANNED	LOCAL and STATE	LOCAL PLANNED	LOCAL and STATE
EA TOTALS			\$ 28,878	\$ 28,878	\$ 23,183	\$ 23,183

**REHABILITATION SERVICES ADMINISTRATION (RSA)
SFY-2008**

DISTRICT I (MARICOPA COUNTY)			FULLY FUNDED		PRESIDENT'S BUDGET PROPOSED REDUCTION	
SERVICES	TARGET GROUP	STATUS ELIG.	LOCAL PLANNED	LOCAL and STATE	LOCAL PLANNED	LOCAL and STATE
Adaptive Aids & Devices	PWD	Group	\$ 19,692	\$ 19,692	\$ 15,808	\$ 15,808
Supportive Intervention / Guidance Counseling	PWD - Employment	Group	\$ 22,540	\$ 22,540	\$ 18,094	\$ 18,094
Supervised Employment Extended	PWD	Group	\$ 239,452	\$ 239,452	\$ 192,226	\$ 192,226
Rehabilitation Instruction Services	PWD	Group	\$ 21,040	\$ 21,040	\$ 16,890	\$ 16,890
DISTRICT I TOTALS			\$ 302,724	\$ 302,724	\$ 243,018	\$ 243,018

DISTRICT II (PIMA COUNTY)			FULLY FUNDED		PRESIDENT'S BUDGET PROPOSED REDUCTION	
SERVICES	TARGET GROUP	STATUS ELIG.	LOCAL PLANNED	LOCAL and STATE	LOCAL PLANNED	LOCAL and STATE
Interpreter	PWD (Deaf) Adults	Group	\$ 3,869	\$ 3,869	\$ 3,106	\$ 3,106
Supportive Intervention / Guidance Counseling	PWD Impaired	Group	\$ 25,396	\$ 25,396	\$ 20,387	\$ 20,387
DISTRICT II TOTALS			\$ 29,265	\$ 29,265	\$ 23,493	\$ 23,493

DISTRICT III (APACHE, COCONINO, NAVAJO, YAVAPAI COUNTIES)			FULLY FUNDED		PRESIDENT'S BUDGET PROPOSED REDUCTION	
SERVICES	TARGET GROUP	STATUS ELIG.	LOCAL PLANNED	LOCAL and STATE	LOCAL PLANNED	LOCAL and STATE
COCONINO COUNTY						
Supported Employment	PWD Adults	Group	\$ 10,904	\$ 10,904	\$ 8,753	\$ 8,753
COCONINO TOTALS			\$ 10,904	\$ 10,904	\$ 8,753	\$ 8,753
NAVAJO COUNTY						
Job Training	PWD Adults	Group	\$ 20,015	\$ 20,015	\$ 16,067	\$ 16,067
NAVAJO TOTALS			\$ 20,015	\$ 20,015	\$ 16,067	\$ 16,067
DISTRICT III TOTALS			\$ 30,919	\$ 30,919	\$ 24,820	\$ 24,820

**REHABILITATION SERVICES ADMINISTRATION (RSA)
SFY-2008**

DISTRICT IV (LA PAZ, MOHAVE, YUMA COUNTIES)			FULLY FUNDED		PRESIDENT'S BUDGET PROPOSED REDUCTION	
SERVICES	TARGET GROUP	STATUS ELIG.	LOCAL PLANNED	LOCAL and STATE	LOCAL PLANNED	LOCAL and STATE
YUMA COUNTY						
Employment Related Program	PWD	Group	\$ 7,040	\$ 7,040	\$ 5,531	\$ 5,531
Rehabilitation Instructional Service:	PWD	Group	\$ 11,733	\$ 11,733	\$ 9,218	\$ 9,218
YUMA TOTALS			\$ 18,773	\$ 18,773	\$ 14,749	\$ 14,749
MOHAVE COUNTY						
Day Treatment & Training	AFC	Group	\$ 22,639	\$ 22,639	\$ 17,786	\$ 17,786
MOHAVE TOTALS			\$ 22,639	\$ 22,639	\$ 17,786	\$ 17,786
DISTRICT IV TOTALS			\$ 41,412	\$ 41,412	\$ 32,535	\$ 32,535

DISTRICT V (GILA, PINAL COUNTIES)			FULLY FUNDED		PRESIDENT'S BUDGET PROPOSED REDUCTION	
SERVICES	TARGET GROUP	STATUS ELIG.	LOCAL PLANNED	LOCAL and STATE	LOCAL PLANNED	LOCAL and STATE
GILA COUNTY						
Employment Services	PWD	Group	\$ 16,310	\$ 16,310	\$ 13,093	\$ 13,093
COCONINO TOTALS			\$ 16,310	\$ 16,310	\$ 13,093	\$ 13,093
PINAL COUNTY						
Employment Services	PWD	Group	\$ 18,820	\$ 18,820	\$ 15,108	\$ 15,108
COCONINO TOTALS			\$ 18,820	\$ 18,820	\$ 15,108	\$ 15,108
DISTRICT V TOTALS			\$ 35,130	\$ 35,130	\$ 28,201	\$ 28,201

			FULLY FUNDED		PRESIDENT'S BUDGET PROPOSED REDUCTION	
SERVICES	TARGET GROUP	STATUS ELIG.	LOCAL PLANNED	LOCAL and STATE	LOCAL PLANNED	LOCAL and STATE
Case Management	PWD	Group	\$ -	\$ -	\$ -	\$ -
Employment Related Services	PWD	Group	\$ -	\$ 76,000	\$ -	\$ 61,011
Rehabilitation Instructional Service:	PWD	Group	\$ -	\$ -	\$ -	\$ -
Supportive Intervention / Guidance Counseling	PWD	Group	\$ -	\$ -	\$ -	\$ -
Independent Living	PWD	Group	\$ -	\$ 671,443	\$ -	\$ 539,016
STATEWIDE TOTALS			\$ -	\$ 747,443	\$ -	\$ 600,027

ALL RSA SERVICES			FULLY FUNDED		PRESIDENT'S BUDGET PROPOSED REDUCTION	
			LOCAL PLANNED	LOCAL and STATE	LOCAL PLANNED	LOCAL and STATE
RSA TOTALS			\$ 439,450	\$ 1,186,893	\$ 352,067	\$ 952,094

**PLANNED SFY-2008 SSBG SERVICE ALLOCATIONS
LISTED BY FEDERAL SSBG SERVICE DEFINITIONS NUMBERS 1 - 29
INDICATING THE RESPONSIBLE DES ADMINISTRATION
THAT PROVIDES OR CONTRACTS FOR THE SERVICE**

SVC CODE	SERVICE (SVC) TITLE	ADMIN	FULLY FUNDED	PRESIDENT'S BUDGET PROPOSED REDUCTION
1.	Adoption Services	DAAS	\$ -	\$ -
		RSA	\$ -	\$ -
		EA	\$ -	\$ -
		CCA	\$ -	\$ -
		DDD	\$ -	\$ -
		CPIP	\$ -	\$ -
		ACYF	\$ -	\$ -
		TOTAL	\$ -	\$ -
2.	Case Management Services	DAAS	\$ 1,206,389	\$ 1,022,645
		RSA	\$ -	\$ -
		EA	\$ 22,837	\$ 18,333
		CCA	\$ -	\$ -
		DDD	\$ -	\$ -
		CPIP	\$ 1,433,168	\$ 1,150,317
		ACYF	\$ 77,030	\$ 62,036
		TOTAL	\$ 2,739,424	\$ 2,253,331
3.	Congregate Meals	DAAS	\$ 22,926	\$ 18,405
		RSA	\$ -	\$ -
		EA	\$ -	\$ -
		CCA	\$ -	\$ -
		DDD	\$ -	\$ -
		CPIP	\$ -	\$ -
		ACYF	\$ -	\$ -
		TOTAL	\$ 22,926	\$ 18,405
4.	Counseling Services	DAAS	\$ -	\$ -
		RSA	\$ -	\$ -
		EA	\$ -	\$ -
		CCA	\$ -	\$ -
		DDD	\$ -	\$ -
		CPIP	\$ -	\$ -
		ACYF	\$ 258,085	\$ 207,184
		TOTAL	\$ 258,085	\$ 207,184

**PLANNED SFY-2008 SSBG SERVICE ALLOCATIONS
LISTED BY FEDERAL SSBG SERVICE DEFINITIONS NUMBERS 1 - 29
INDICATING THE RESPONSIBLE DES ADMINISTRATION
THAT PROVIDES OR CONTRACTS FOR THE SERVICE**

SVC CODE	SERVICE (SVC) TITLE	ADMIN	FULLY FUNDED	PRESIDENT'S BUDGET PROPOSED REDUCTION
5.	Day Care Services--Adults	DAAS	\$ 296,241	\$ 240,574
		RSA	\$ -	\$ -
		EA	\$ -	\$ -
		CCA	\$ -	\$ -
		DDD	\$ -	\$ -
		CPIP	\$ -	\$ -
		ACYF	\$ -	\$ -
		TOTAL	\$ 296,241	\$ 240,574
6.	Day Care Services--Children	DAAS	\$ -	\$ -
		RSA	\$ -	\$ -
		EA	\$ -	\$ -
		CCA	\$ 360,076	\$ 289,059
		DDD	\$ -	\$ -
		CPIP	\$ -	\$ -
		ACYF	\$ 38,920	\$ 31,244
		TOTAL	\$ 398,996	\$ 320,303
7.	Education and Training Services	DAAS	\$ -	\$ -
		RSA	\$ -	\$ -
		EA	\$ -	\$ -
		CCA	\$ -	\$ -
		DDD	\$ -	\$ -
		CPIP	\$ -	\$ -
		ACYF	\$ -	\$ -
		TOTAL	\$ -	\$ -
8.	Employment Services	DAAS	\$ -	\$ -
		RSA	\$ -	\$ -
		EA	\$ 6,041	\$ 4,850
		CCA	\$ -	\$ -
		DDD	\$ -	\$ -
		CPIP	\$ 46,941	\$ 37,683
		ACYF	\$ -	\$ -
		TOTAL	\$ 52,982	\$ 42,533

**PLANNED SFY-2008 SSBG SERVICE ALLOCATIONS
LISTED BY FEDERAL SSBG SERVICE DEFINITIONS NUMBERS 1 - 29
INDICATING THE RESPONSIBLE DES ADMINISTRATION
THAT PROVIDES OR CONTRACTS FOR THE SERVICE**

SVC CODE	SERVICE (SVC) TITLE	ADMIN	FULLY FUNDED	PRESIDENT'S BUDGET PROPOSED REDUCTION
9.	Family Planning Services	DAAS	\$ -	\$ -
		RSA	\$ -	\$ -
		EA	\$ -	\$ -
		CCA	\$ -	\$ -
		DDD	\$ -	\$ -
		CPIP	\$ -	\$ -
		ACYF	\$ -	\$ -
		TOTAL	\$ -	\$ -
10.	Foster Care Services (Adults)	DAAS	\$ -	\$ -
		RSA	\$ -	\$ -
		EA	\$ -	\$ -
		CCA	\$ -	\$ -
		DDD	\$ -	\$ -
		CPIP	\$ -	\$ -
		ACYF	\$ -	\$ -
		TOTAL	\$ -	\$ -
11.	Foster Care Services (Children)	DAAS	\$ -	\$ -
		RSA	\$ -	\$ -
		EA	\$ -	\$ -
		CCA	\$ -	\$ -
		DDD	\$ -	\$ -
		CPIP	\$ -	\$ -
		ACYF	\$ 22,613,100	\$ 22,613,100
		TOTAL	\$ 22,613,100	\$ 22,613,100
12.	Health Related and Home Health Services	DAAS	\$ 30,478	\$ 24,467
		RSA	\$ -	\$ -
		EA	\$ -	\$ -
		CCA	\$ -	\$ -
		DDD	\$ -	\$ -
		CPIP	\$ -	\$ -
		ACYF	\$ -	\$ -
		TOTAL	\$ 30,478	\$ 24,467

**PLANNED SFY-2008 SSBG SERVICE ALLOCATIONS
LISTED BY FEDERAL SSBG SERVICE DEFINITIONS NUMBERS 1 - 29
INDICATING THE RESPONSIBLE DES ADMINISTRATION
THAT PROVIDES OR CONTRACTS FOR THE SERVICE**

SVC CODE	SERVICE (SVC) TITLE	ADMIN	FULLY FUNDED	PRESIDENT'S BUDGET PROPOSED REDUCTION
13.	Home Based Services	DAAS	\$ 2,377,434	\$ 1,854,850
		RSA	\$ -	\$ -
		EA	\$ -	\$ -
		CCA	\$ -	\$ -
		DDD	\$ -	\$ -
		CPIP	\$ 26,997	\$ 21,672
		ACYF	\$ 1,292,955	\$ 1,037,949
	TOTAL	\$ 3,697,386	\$ 2,914,471	
14.	Home Delivered Meals	DAAS	\$ 904,939	\$ 713,588
		RSA	\$ -	\$ -
		EA	\$ -	\$ -
		CCA	\$ -	\$ -
		DDD	\$ -	\$ -
		CPIP	\$ -	\$ -
		ACYF	\$ -	\$ -
	TOTAL	\$ 904,939	\$ 713,588	
15.	Housing Services	DAAS	\$ 48,291	\$ 43,462
		RSA	\$ -	\$ -
		EA	\$ -	\$ -
		CCA	\$ -	\$ -
		DDD	\$ -	\$ -
		CPIP	\$ 551,937	\$ 443,081
		ACYF	\$ -	\$ -
	TOTAL	\$ 600,228	\$ 486,543	
16.	Independent and Transitional	DAAS	\$ -	\$ -
		RSA	\$ -	\$ -
		EA	\$ -	\$ -
		CCA	\$ -	\$ -
		DDD	\$ -	\$ -
		CPIP	\$ -	\$ -
		ACYF	\$ -	\$ -
	TOTAL	\$ -	\$ -	

**PLANNED SFY-2008 SSBG SERVICE ALLOCATIONS
LISTED BY FEDERAL SSBG SERVICE DEFINITIONS NUMBERS 1 - 29
INDICATING THE RESPONSIBLE DES ADMINISTRATION
THAT PROVIDES OR CONTRACTS FOR THE SERVICE**

SVC CODE	SERVICE (SVC) TITLE	ADMIN	FULLY FUNDED	PRESIDENT'S BUDGET PROPOSED REDUCTION
17.	Information and Referral	DAAS	\$ 18,221	\$ 14,627
		RSA	\$ -	\$ -
		EA	\$ -	\$ -
		CCA	\$ -	\$ -
		DDD	\$ -	\$ -
		CPIP	\$ 39,800	\$ 31,950
		ACYF	\$ 15,212	\$ 12,212
	TOTAL	\$ 73,233	\$ 58,789	
18.	Legal Services	DAAS	\$ 18,888	\$ 15,163
		RSA	\$ -	\$ -
		EA	\$ -	\$ -
		CCA	\$ -	\$ -
		DDD	\$ -	\$ -
		CPIP	\$ 97,515	\$ 78,282
		ACYF	\$ -	\$ -
	TOTAL	\$ 116,403	\$ 93,445	
19.	Pregnancy and Parenting Services	DAAS	\$ -	\$ -
		RSA	\$ -	\$ -
		EA	\$ -	\$ -
		CCA	\$ -	\$ -
		DDD	\$ -	\$ -
		CPIP	\$ -	\$ -
		ACYF	\$ 12,083	\$ 9,700
	TOTAL	\$ 12,083	\$ 9,700	
20.	Prevention and Intervention	DAAS	\$ 242,481	\$ 194,658
		RSA	\$ -	\$ -
		EA	\$ -	\$ -
		CCA	\$ -	\$ -
		DDD	\$ -	\$ -
		CPIP	\$ 2,743,252	\$ 1,409,542
		ACYF	\$ 2,696,985	\$ 2,164,710
	TOTAL	\$ 5,682,718	\$ 3,768,910	

**PLANNED SFY-2008 SSBG SERVICE ALLOCATIONS
LISTED BY FEDERAL SSBG SERVICE DEFINITIONS NUMBERS 1 - 29
INDICATING THE RESPONSIBLE DES ADMINISTRATION
THAT PROVIDES OR CONTRACTS FOR THE SERVICE**

SVC CODE	SERVICE (SVC) TITLE	ADMIN	FULLY FUNDED	PRESIDENT'S BUDGET PROPOSED REDUCTION
21.	Protective Services for Adults	DAAS	\$ 1,500,830	\$ 1,204,825
		RSA	\$ -	\$ -
		EA	\$ -	\$ -
		CCA	\$ -	\$ -
		DDD	\$ -	\$ -
		CPIP	\$ -	\$ -
		ACYF	\$ -	\$ -
		TOTAL	\$ 1,500,830	\$ 1,204,825
22.	Protective Services for Children	DAAS	\$ -	\$ -
		RSA	\$ -	\$ -
		EA	\$ -	\$ -
		CCA	\$ -	\$ -
		DDD	\$ -	\$ -
		CPIP	\$ -	\$ -
		ACYF	\$ 7,867,868	\$ 6,316,109
		TOTAL	\$ 7,867,868	\$ 6,316,109
23.	Recreational Services	DAAS	\$ -	\$ -
		RSA	\$ -	\$ -
		EA	\$ -	\$ -
		CCA	\$ -	\$ -
		DDD	\$ -	\$ -
		CPIP	\$ -	\$ -
		ACYF	\$ -	\$ -
		TOTAL	\$ -	\$ -
24.	Residential Treatment Services	DAAS	\$ -	\$ -
		RSA	\$ -	\$ -
		EA	\$ -	\$ -
		CCA	\$ -	\$ -
		DDD	\$ -	\$ -
		CPIP	\$ -	\$ -
		ACYF	\$ -	\$ -
		TOTAL	\$ -	\$ -

**PLANNED SFY-2008 SSBG SERVICE ALLOCATIONS
LISTED BY FEDERAL SSBG SERVICE DEFINITIONS NUMBERS 1 - 29
INDICATING THE RESPONSIBLE DES ADMINISTRATION
THAT PROVIDES OR CONTRACTS FOR THE SERVICE**

SVC CODE	SERVICE (SVC) TITLE	ADMIN	FULLY FUNDED	PRESIDENT'S BUDGET PROPOSED REDUCTION
25.	Special Services for Persons with Developmental or Physical Disabilities of Auditory Impairment	DAAS	\$ -	\$ -
		RSA	\$ 1,186,893	\$ 952,094
		EA	\$ -	\$ -
		CCA	\$ -	\$ -
		DDD	\$ 1,728,811	\$ 1,386,840
		CPIP	\$ -	\$ -
		ACYF	\$ -	\$ -
	TOTAL	\$ 2,915,704	\$ 2,338,934	
26.	Special Services for Youth Involved in or at Risk of Involvement with Criminal Activity	DAAS	\$ -	\$ -
		RSA	\$ -	\$ -
		EA	\$ -	\$ -
		CCA	\$ -	\$ -
		DDD	\$ -	\$ -
		CPIP	\$ -	\$ -
		ACYF	\$ 63,614	\$ 51,068
	TOTAL	\$ 63,614	\$ 51,068	
27.	Substance Abuse Services	DAAS	\$ -	\$ -
		RSA	\$ -	\$ -
		EA	\$ -	\$ -
		CCA	\$ -	\$ -
		DDD	\$ -	\$ -
		CPIP	\$ -	\$ -
		ACYF	\$ -	\$ -
	TOTAL	\$ -	\$ -	
28.	Transportation Services	DAAS	\$ 115,767	\$ 93,395
		RSA	\$ -	\$ -
		EA	\$ -	\$ -
		CCA	\$ -	\$ -
		DDD	\$ -	\$ -
		CPIP	\$ 51,487	\$ 41,332
		ACYF	\$ -	\$ -
	TOTAL	\$ 167,254	\$ 134,727	

**PLANNED SFY-2008 SSBG SERVICE ALLOCATIONS
LISTED BY FEDERAL SSBG SERVICE DEFINITIONS NUMBERS 1 - 29
INDICATING THE RESPONSIBLE DES ADMINISTRATION
THAT PROVIDES OR CONTRACTS FOR THE SERVICE**

SVC CODE	SERVICE (SVC) TITLE	ADMIN	FULLY FUNDED	PRESIDENT'S BUDGET PROPOSED REDUCTION
29.	Other Services (DES Training, Planning, Admin., Consultation, Other Expense)	Department	\$ 6,472,094	\$ 5,203,490
		TOTAL \$	6,472,094	\$ 5,203,490
Total of the SFY-2008 Planned SSBG Funding Allocations Listed Above for Federal Service Definitions Numbers 1 Through 29				
		TOTAL \$	56,486,586	\$ 49,014,494
All SFY-2008 State and Locally Planned SSBG Funding Allocations Listed by the Administration/Division Responsible for Providing or Contracting for the Services				
		ACYF	\$ 34,935,852	\$ 32,505,311
		DDD	\$ 1,728,811	\$ 1,386,838
		RSA	\$ 1,186,893	\$ 952,094
		CCA	\$ 360,076	\$ 289,059
		EA	\$ 28,878	\$ 23,183
		CPIP	\$ 4,991,097	\$ 3,213,860
		DAAS	\$ 6,782,885	\$ 5,440,659
		Department	\$ 6,472,094	\$ 5,203,490
		TOTAL \$	56,486,586	\$ 49,014,494