

Arizona Game and Fish Department

2012 Pronghorn Antelope and Elk



www.azgfd.gov

Hunt Draw Information

*To report violators, call the Department's Operation Game Thief line: (800) 352-0700
or report violations online at www.azgfd.gov/thief.*



Use this booklet to apply for Arizona's 2012 Pronghorn Antelope and Elk drawing. This information applies to hunting seasons from Jan. 1, 2012 to Dec. 31, 2012.

Hunt permit application deadline is Tuesday, Feb. 14, 2012, at 7 p.m. (MST)

The online application service will be available early to mid-January. Paper hunt permit applications also can be submitted by mail or at any Department office.

The current year Arizona Hunting and Trapping Regulations (official rules) can be found at www.azgfd.gov or at any Department office or license dealer.

Show Low's Auto Giant • Northern Arizona Automall



The Outdoorsmen's Friendly Dealer!

928-537-5755
or
877-537-5755

Hatchtoyota.com

1051 N. Automall Parkway
Show Low, AZ 85901



Arizona's #1 Tundra Dealer
Quality • Dependability • Reliability • Safety

Located in the
Northern Arizona Automall
next to Show Low Airport

SHOW LOW MOTORSPORTS

◆ SALES ◆ SERVICE ◆ PARTS ◆ ACCESSORIES ◆ RENTALS ◆



928-532-RIDE
866-616-RIDE
showlowmotorsports.com



1000 N AUTOMALL PARKWAY
SHOW LOW, ARIZONA
Next to Show Low Airport



BEST PRICE GUARANTEE!



Try One for FREE!

Go Online to:
www.riflemagazine.com
 to request your
FREE ISSUE.



From the reloading bench, to the range and the epic adventure of the hunt. **We've got you covered!**

Check out our online sporting goods store for great prices on Danner and LaCrosse boots, Browning gunsafes, outdoor books and many more items.



Interested in reloading ammunition? Log on to our online reloading manual.

LOADDATA.com

Over 215,000 loads and growing!

Wolfe Publishing Co.
 2180 Gulfstream • Suite A
 Prescott, AZ 86301
 Toll Free: 800-899-7810
www.riflemagazine.com
 An Arizona, family-owned company for 45 years.



ARIZONA GAME AND FISH DEPARTMENT MISSION

To conserve, enhance, and restore Arizona’s diverse wildlife resources and habitats through aggressive protection and management programs, and to provide wildlife resources and safe watercraft and off-highway vehicle recreation for the enjoyment, appreciation, and use by present and future generations.

ARIZONA GAME AND FISH COMMISSION

- Robert R. Woodhouse, Chair – Roll
- Norman W. Freeman – Chino Valley
- Jack F. Husted – Springerville
- J.W. Harris – Tucson
- Robert E. Mansell – Winslow

ARIZONA GAME AND FISH DEPARTMENT

5000 W. Carefree Highway
Phoenix, AZ 85086
www.azgfd.gov

- Larry D. Voyles, Director
- Gary R. Hovatter, Deputy Director
- Bob Broscheid, Deputy Director

REGIONAL OFFICES

REGION I

2878 E. White Mountain Blvd., Pinetop 85935
(928) 367-4281

REGION II

3500 S. Lake Mary Road, Flagstaff 86001
(928) 774-5045

REGION III

5325 N. Stockton Hill Road, Kingman 86409
(928) 692-7700

REGION IV

9140 E. 28th Street, Yuma 85365
(928) 342-0091

REGION V

555 N. Greasewood Road, Tucson 85745
(520) 628-5376

REGION VI

7200 E. University Drive, Mesa 85207
(480) 981-9400

The Arizona Game and Fish Department prohibits discrimination on the basis of race, color, sex, national origin, age, disability in its programs and activities. If anyone believes that they have been discriminated against in any of the AZGFD’s programs or activities, including its employment practices, the individual may file a complaint alleging discrimination directly with the Director’s office, 5000 W. Carefree Highway, Phoenix, AZ 85086, (602) 942-3000 or U.S. Fish and Wildlife Service, 4040 N. Fairfax Dr., Suite 130, Arlington, VA 22203.



If you require this document in an alternative format, please contact the Director’s office as listed above or by calling TTY at 1 (800) 367-8939.

Important Information for 2012

This list is for informational purposes only and lists important information or major changes that have occurred since publication of the last hunt draw booklet. Individuals should thoroughly read and understand the appropriate regulations prior to submitting an application or going afield. The current Arizona Hunting and Trapping Regulations can be found at www.azgfd.gov, or at any Department office or license dealer.

Purchase Licenses Online Visit the Arizona Game and Fish Department’s website at www.azgfd.gov to purchase hunting or fishing licenses using your Visa or MasterCard from the convenience of your own home or office. There is a \$1.50 Internet fee for buying your license online – the fee actually pays for the service. If you purchase a hunting or fishing license online, you must print the license from your home printer. The Arizona Game and Fish Department will not mail your license to you.

Register Now for Hunter Education Classes Hunter Education classes fill up quickly. If you need your Hunter Education card before your hunt, get ahead of the game and register now. To register for a Hunter Education class, visit www.azgfd.gov and select Education or call (602) 942-3000 or toll free at 1 (800) 824-2456.

Hopi Trust Lands Hopi Trust Lands in Units 4A, 5A, and 5B are open to both state and Hopi hunters under an agreement with the Hopi Tribe. A percentage of tags are set aside for Hopi Tribal member hunters. Hunt numbers for these hunts must be obtained from the Hopi Tribe Wildlife and Ecosystems Management Program (refer to the notes associated with the individual hunts). If there are permit-tags leftover after the draw for these hunts, they will be available to everyone.

Leftover Tags Available at Department Offices There are now two methods to obtain a leftover tag. Paper applications will be accepted by mail only starting on Monday, Apr. 23 at 8 a.m. (MST). However, beginning on Monday, April 30 at 8 a.m. (MST), hunters can also obtain a leftover tag in person with a completed application from any of the seven Arizona Game and Fish Department offices. A list of office locations is available on this page or at www.azgfd.gov/offices.


For Reference to Laws and Rules Arizona Revised Statutes and Commission Rules are printed in the Arizona Hunting and Trapping Regulations book, which is printed each May. To review an Arizona Revised Statute or Commission Rule mentioned in this document, refer to the current Arizona Hunting and Trapping Regulations book. Laws and rules also may be viewed at www.azgfd.gov. Select Inside AZGFD in the left column. Then select Rulemaking Process.

Law Changes Open Areas to Hunting Recent state law changes by SB 1334 have transferred the authority to regulate the take of wildlife in municipalities to the Arizona Game and Fish Commission. Hunters will find new information in descriptions and through hunting notes that further define open and closed areas to hunting in these regulations and should read them carefully. The benefit of these law changes is they open up many of the open, undeveloped, uninhabited areas on state trust and public lands within city limits to safe, responsible hunting. However, hunters and citizens alike should be aware, these changes and these regulations do not allow hunting in developed communities or neighborhoods. It is still illegal and a revocable offense to shoot a firearm within ¼-mile of an occupied building; to shoot from, on, or across a roadway; or to trespass on private property. To learn more about these law changes, visit www.azgfd.gov.

On the cover: Chip Lewis successfully harvested an antelope in Unit 18B. Zandora Sawyer with her first bull elk in Unit 6A. Congratulations!

THOMAS M. BAKER P.L.C.
Attorney at Law

Game and Fish Law - State and Federal
(Lacey Act - Import/Export)
Firearms Law - State and Federal



Over 20 Years
Experience

5050 N. 8th Place #10
Phoenix, Arizona 85014

602-279-1644 P
602-263-9028 F

ARIZONA PROFESSIONAL ELK HUNTS
"The Best Use of Your Time is Our #1 Priority"

Keith D. Williams - Outfitter
Fully Licensed & Permitted

Specializing in Arizona Units 1, 2, 3, 4, 5, 6, 23, 27
Elk • Antelope • Deer • Bear • Lion • Varmint Safaris



www.SouthwestBigGameBrokerage.com
Southwest Big Game Brokerage is dedicated to matching you, the hunter, with a hunt and tag to fill your needs within your price range. Bringing Together Only the Best.....Outfitters, Public Units & Private Ranches, and Tags with Hunters.....Like You!

Our purpose is to elevate the quality of Hunting in the Southwest (NM, TX, OK) by taking care of those that properly manage Elk, Antelope and Deer.
P. O. Box 1107, Lakeside, AZ 85929
928-242-0105 cell • 928-368-4105

NM Elk
Tags!

Diamond
OUTFITTERS

Elk, Coues Deer, Mule Deer, Lion & Antelope Specialist!
Combination Lion Hunts With Dogs & Mules Available On All Hunts
100% Opportunity On
Trophy Bulls Since 2005!

Choose From:
Fully Guided • Semi-Guided
Mule Pack-In Hunts Available





Dan Adler
520-529-1469

Endorsed by: Garth Carter and The Huntin' Fool,
Remington, PSE, Primos, Lumenok & more!

Arizona's Most Respected & Referred Outfitter
www.AZDiamondOutfitters.com

Hunting Information
Download packets to your computer!

Hunt Units.com

- ◆ Game Unit Information
 - ◆ GPS Unit Waterholes
 - ◆ Hunting Topo Maps
 - ◆ Hunting Hot Spots

Topo Maps




Maps by Huntmap 1:100,000 Scale
Includes your hunting unit boundary

License Information

Who Can Go?

Everyone needs a license to hunt wildlife in Arizona. You need in your possession a valid hunt or combination hunt and fish license, plus any required hunt permit-tags, nonpermit-tags, or stamps. Neither a Class H Three-Day Non-resident Hunting License nor an Apprentice Hunting License is valid for big game.

YOUNG HUNTERS – Anyone 14 years of age or older needs a license to hunt wildlife in Arizona. You need in your possession a valid hunt or combination hunt and fish license, plus any required hunt permit-tags, nonpermit-tags or stamps.

A person under 14 may hunt wildlife other than big game without a license only when accompanied by a properly licensed person 18 years or older. No more than two unlicensed children may accompany any license holder.

No one under the age of 14 may hunt big game without having completed a Hunter Education Course. No one under age 10 may hunt big game in Arizona. To hunt big game, anyone 10 to 13 years of age must have in their possession a valid hunt or combination hunt and fish license, a valid Hunter Education Course completion card, plus any required permit-tags, nonpermit-tags and stamps.

Where to Buy Licenses

Arizona hunting licenses may be purchased online at www.azgfd.gov. If you purchase a hunting or fishing license online, you must print the license from your home printer. The Arizona Game and Fish Department will not mail your license to you. Licenses also can be obtained from license dealers throughout the state or from any Arizona Game and Fish Department office (see locations on page 2 of this booklet).

A list of license dealers can be found at www.azgfd.gov by selecting the licenses icon box on the home page.

If you are applying for a big game permit-tag or bonus points, you may purchase your general hunt or combination hunt and fish license while you are entering your application for the draw. The license will not be issued and mailed until the draw is complete. If you wish to use your license before the draw is complete, you must pre-purchase a license before applying.

Although they are valid for a big game drawing application, Family Licenses, Super Conservation Licenses, and Child General Hunting and Combination Licenses **may not be obtained through the draw**; these licenses must be purchased at Department offices.

Lifetime License Holders

If a lifetime license holder changes residency status from Arizona, the licensee must then purchase non-resident stamps, tags, and permits. A non-resident tag or stamp can accompany your lifetime resident license. If you are a lifetime license holder who has moved out of state, the 10 percent non-resident cap does not apply to you. The lifetime license will remain legal for the taking of all wildlife as permitted by law. Residency may be re-established after moving back to Arizona and meeting the required time period as defined below.

Residency Requirements

“Resident” means a person who has been a bona fide resident of the state of Arizona for six months immediately preceding the date of application for a license or a tag, or a member of the armed forces who has been stationed in Arizona for a period of 30 days immediately preceding the date of application for a license or a tag.

Arizona residents may purchase a resident license. All other individuals must purchase a non-resident license.

Three-Day Non-Resident License

A Class H, Three-Day Non-resident license, valid for the taking of small game, fur-bearing animals, predatory animals, nongame animals, nongame birds, upland game birds and migratory game birds (with applicable stamps) is available at all license dealers. This license is not valid for hunting big game nor is it valid when applying for big game hunts through the draw process.

Apprentice License

Resident licensed hunters are able to obtain a free Apprentice Hunting License valid for two days for use when mentoring a new hunter. This affords new hunters the opportunity to “try before you buy,” under the supervision of a licensed hunter.

An apprentice hunting license is valid for two consecutive days when the apprentice is accompanied in the field by a mentor. An apprentice

hunting license is valid for the taking of small game, fur-bearing animals, predatory animals, nongame animals, nongame birds and upland game birds. Any required stamps must be purchased in addition to obtaining an Apprentice License. An apprentice may be a resident or nonresident and may only be licensed pursuant to this paragraph once per calendar year. A mentor must be a bona fide resident of this state who is at least 18 years of age and must possess a class F, G, J, K, M or N license or a complimentary or lifetime license. A mentor may apply for no more than two apprentice hunting licenses per calendar year. When applying for an apprentice license, the mentor must name the person he or she will be taking afield. Consult A.R.S. 17-333 for more information.

Honorary Scout License

Honorary Scout Class F Youth Combination Hunting and Fishing license is offered to a resident youth who has attained either the rank of Eagle Scout (Boy Scout) or received a Gold Award (Girl Scout). The fee for the reduced license is \$5; a savings of \$21.50. The applicant must present proof of their rank or award by providing their certification letter, wallet card, or award certificate at any Department office, and complete the Honorary Scout License application (Form 306, available on the Department website or at any Department office). This license is not available through the draw. At the age of 21, an Eagle Scout or Gold Award recipient is no longer eligible for the Honorary Scout Youth Class F license, and from that point forward would be required to purchase an adult class license. A number of sportsmen’s groups will sponsor a license by offering benefits, such as free membership to their organization. Ask for a list of sponsoring organizations when picking up your license.

Lost License or Tag Replacement

Lost licenses, hunt permit-tags and nonpermit-tags may be replaced for a \$4 fee at any Arizona Game and Fish Department license dealer. Consult R12-4-103 Duplicate Tags and Licenses for additional information. Stamps cannot be replaced, they must be repurchased.

Physically Challenged Hunters

Those hunters who are physically challenged may qualify for a Challenged Hunter Access/Mobility Permit (CHAMP). Consult R12-4-217 for a

License Information

description of this permit. Contact any Arizona Game and Fish Department office for additional information and application.

Non-US Citizens Wanting to Hunt in Arizona

Pursuant to new regulations by the U.S. Bureau of Alcohol, Tobacco and Firearms (ATF), non-immigrant aliens who want to temporarily import firearms and/or ammunition into the United States for the allowable purpose of taking wildlife will need an ATF import permit and valid hunting license in possession at the time of entry/import into the United States. For further information or to make application for the import permit, contact ATF's Firearms and Explosives Import Branch at (304) 616-4550, or download an application from the ATF website at www.atf.gov.

Tag Transfers

Under Arizona Revised Statutes and Arizona Game and Fish Commission Rules there are ways people can transfer big game tags to children. Beginning Jan. 1, 2012, a \$4 transfer fee will apply.

A parent, grandparent or legal guardian holding a big game tag may allow the use of that tag by their minor child or minor grandchild pursuant to the following requirements:

- The minor child is 10 to 17 years old on the date of transfer;
- The minor child has a valid hunting or combination license on the date of transfer;
- A minor child less than 14 years old has satisfactorily completed a Department-approved hunter education course by the beginning date of the hunt;
- The parent or guardian must accompany the child in the field or, if a grandparent allows a minor grandchild to use the grandparent's permit or tag, the grandparent, parent or the child's guardian must accompany the child in the field. In either case, the adult must be within 50 yards of the child when the animal is taken.

Once a tag is transferred at a Department office, the original permittee may no longer use it.

A person may also transfer his or her game tag for use by a child with a life threatening medical condition or a qualifying permanent physical disability. Consult A.R.S. 17-332 for more information, or visit www.azgfd.gov.

Should you be unable to use your big game permit, the Department is unable to reimburse you for your fees or reinstate your bonus points. However, you may donate your tag to a nonprofit organization that provides hunting opportunities to children with life-threatening medical conditions or qualifying permanent physical disabilities. The \$4 transfer fee does not apply to nonprofit organizations. You may contact the following organizations to arrange for a donation.

- Hunt of a Lifetime at www.hoalarizona.org.
- Outdoor Experience 4 All at www.outdoorexperienceforall.org
- Catch-A-Dream at <http://catchadream.org>.
- United Special Sportsmen Alliance at www.childswish.com.

Thank You Hunters and Recreational Shooters

Arizona's rich outdoor heritage is enjoyed by all – thanks to hunters like you, whose purchase of hunting and recreational shooting equipment supports wildlife management and habitat enhancement in the Grand Canyon State. When you purchase a rifle, ammunition, archery equipment, and other sporting gear, you pay a federal excise tax and import duties.

Since 1937, this money has been collected by the federal government and redistributed to the states using a formula based on hunting license sales and the state's land area. In 2011, that meant over \$9.3 million for game management in Arizona. This money paid for game surveys, hunter education classes, wildlife water catchment construction, wildlife research and shooting range development and operations, among other projects.

Hunters like you are part of the largest and most successful wildlife conservation programs in the world...thank you.

The Wildlife and Sport Fish Restoration Acts fostered partnerships between Federal and State fish and wildlife agencies, the sporting arms industry, conservation groups, and sportsmen to benefit wildlife – and has

been key to implementing the North American Model of Wildlife Conservation. In 2012, we will proudly observe 75 years of the Wildlife and Sport Fish Restoration program and the success of the partnerships that have made this program what it is today. We hope the anniversary will act as a catalyst to make the program even stronger in the years ahead.



Hunt Permit-tag and License Fee Information

The fees listed on this page are valid for 2012 hunts. Please refer to Notes below.

LICENSES	RESIDENT	NON-RESIDENT	YOUTH/CHILD
General Hunting (Class G)	\$32.25	\$151.25	\$15.00 ^{1,9}
Combination Hunt and Fish (Class F)	\$54.00	\$225.75	\$20.00 ^{1,9}
Combination Hunt and Fish (Class F)			\$26.50 ²
Combination Hunt and Fish (Class F) (Honorary Scout license)			\$5.00 ^{9,10}
Three-Day Hunting (Class H) – not valid for big game	NA	\$61.25	use resident or non-resident fee
Super Conservation Hunting (Class M)	See page 7	NA	use resident or non-resident fee
Super Conservation Combination Hunt and Fish (Class N)	See page 7	NA	use resident or non-resident fee
Family General Hunting (Class J)	See page 7	NA	See page 7
Family Combination Hunt and Fish (Class K)	See page 7	NA	See page 7
Trapping	\$30.00	\$275.00	\$10.00 ⁵
Sport Falconry	\$87.50	NA	\$87.50
HUNT PERMIT-TAGS <i>Obtained only through application and drawing procedures, price shown includes \$7.50 application fee.</i>	RESIDENT	NON-RESIDENT	YOUTH
Bonus Point	\$7.50	\$7.50	\$7.50
Deer Hunt Permit-tag	\$42.25	\$232.75	\$32.50 ⁴ (for Juniors-Only hunts)
Antelope Hunt Permit-tag	\$85.00	\$485.00	use resident or non-resident fee
Elk Hunt Permit-tag	\$121.50	\$595.00	\$57.50 ⁴ (for Juniors-Only hunts)
Turkey Hunt Permit-tag	\$25.50	\$77.75	\$17.50 ⁴ (for Juniors-Only hunts)
Javelina Hunt Permit-tag	\$28.75	\$105.00	\$22.50 ⁴ (for Juniors-Only hunts)
Bighorn Sheep Hunt Permit-tag ⁵	\$272.50	\$1,407.50	use resident or non-resident fee
Buffalo – Bull or Any Hunt Permit-tag	\$1,095.00	\$5,452.25	use resident or non-resident fee
Buffalo – Cow Hunt Permit-tag	\$659.50	\$3,262.75	use resident or non-resident fee
Buffalo – Cow or Yearling Hunt Permit-tag	\$659.50	\$3,262.75	use resident or non-resident fee
Buffalo – Yearling Hunt Permit-tag	\$362.75	\$1,754.75	use resident or non-resident fee
Bear Hunt Permit-tag ⁵	\$29.75	\$245.00	use resident or non-resident fee
Sandhill Crane Hunt Permit-tag (3 tags)	\$22.50	\$22.50	\$22.50
Special Sandhill Crane Hunt Permit-tag (1 tag)	\$7.50	\$7.50	\$7.50
Pheasant Hunt Permit-tag (2 tags)	\$7.50	\$7.50	\$7.50
Raptor Hunt Permit-tag	\$7.50	\$7.50	\$7.50
NONPERMIT-TAGS <i>These tags may be purchased over-the-counter at Department offices or license dealers.</i>	RESIDENT	NON-RESIDENT	YOUTH
Archery Deer Nonpermit-tag ⁶	\$34.75	\$225.25	use resident or non-resident fee
Elk Nonpermit-tag	\$114.00	\$587.50	use resident or non-resident fee
Juniors Only Turkey Nonpermit-tag			\$10.00
Archery Turkey Nonpermit-tag	\$18.00	\$70.25	use resident or non-resident fee
Archery Javelina Nonpermit-tag	\$21.25	\$97.50	\$15.00
Bear Nonpermit-tag ⁵	\$22.25	\$237.50	use resident or non-resident fee
Mountain Lion Nonpermit-tag ⁵	\$14.50	\$225.00	use resident or non-resident fee
Bobcat Permit-tag (For sale or export) ⁷	\$3.00	\$3.00	\$3.00
STAMPS	RESIDENT	NON-RESIDENT	YOUTH
Unit 12A (North Kaibab) Habitat Stamp	\$15.00 ⁹	\$15.00 ⁹	\$15.00 ⁹
Migratory Bird Stamp	\$4.50	\$4.50	\$4.50 ⁸
State Waterfowl Stamp	\$8.75	\$8.75	\$8.75 ⁸
Federal Waterfowl Stamp	\$15.00	\$15.00	\$15.00 ⁸

DUPLICATE LICENSES, TAGS AND STAMPS: CONTACT THE ARIZONA GAME AND FISH DEPARTMENT

Notes:

- For children at least age 10, but less than age 14 during the license year. **These licenses may not be purchased through the big game draw.** The Child General Hunting (Class G) and Child Combination Hunt and Fish (Class F) licenses are valid for both residents and non-residents and may only be purchased at Arizona Game and Fish Department offices or online.
- For youth less than 21 years of age. Youth Combination Hunt and Fish license fees apply before and throughout the calendar year of their 20th birthday. The Youth Class F license is valid for both residents and non-residents. This license may be purchased through a big game draw.
- For youth 14-17 years of age. Youth trapping license is valid for both residents and non-residents.
- Permit-Tag fees are for "Juniors-Only" designated hunts. **A youth must pay the higher fee unless applying only for "Juniors-Only" hunts.**
- Mandatory physical check-in.
- Mandatory harvest reporting.
- Not available at license dealers.
- Youth, less than 16 years of age, are not required to purchase a state migratory bird stamp, state waterfowl stamp, or a federal waterfowl stamp.
- Not available through the draw.
- The Department now offers a reduced fee Class F (Combination Hunt/Fish) Honorary Scout license to a resident (less than 21 years of age) who has either attained the rank of Eagle Scout (Boy Scout) or received a Gold Award (Girl Scout).

Family and Super Conservation Licenses

The Family and Super Conservation licenses are designed to help you maximize your recreational dollar. See the cost-saving breakdowns below to determine what license packages are best for you.

FAMILY LICENSES – available online and at Department offices, not through the draw

These are great values for married couples and parents with children under age 18. The first adult pays full license price, a legal spouse receives a 20-percent discount, and license fees are greatly discounted for every child in the immediate family under age 18. **These licenses may not be obtained through the big game draw.**

Eligibility: Residents only. Licenses may be purchased at any Department office. Family licenses may be issued to members of an immediate family residing in the same household. Immediate family means one adult, or two adults who are married to each other, and their children under age 18, including adoptive children, stepchildren, foster children, and other children for whom they are legal guardians.

Family License Class ³	What It Includes	Primary Adult ¹	Legal Spouse ¹	Each Child ^{1,2}	Family of 4 Total Price
Hunting (Class J)	General Hunt license	\$ 32.25	\$ 25.80	\$ 15.00	\$ 88.05 (Save \$29)
Combo Hunt and Fish (Class K)	Combo Hunt and Fish license	\$ 54.00	\$ 43.20	\$ 20.00	\$137.20 (Save \$24)

SUPER CONSERVATION LICENSES – only available at Department offices, not through the draw

These super package deals combine multiple licenses, stamps and tags to create outstanding values for avid anglers and hunters. **These licenses may not be obtained through the big game draw.**

Eligibility: Residents only. The Super Conservation Hunt and Super Conservation Combination Hunt and Fish licenses are available to residents only, and may only be purchased at Department offices.

Super Conservation License Class	What It Includes	Resident	Non-resident
Super Hunting (Class M)^{3,4}	General Hunt license, Unit 12A (North Kaibab) Habitat stamp, state waterfowl stamp and state migratory bird stamp privileges. Also includes nonpermit-tags for archery deer, archery turkey, bear and mountain lion.	\$ 118.00 (Save \$37)	not available
Super Combination Hunt and Fish (Class N)^{3,4}	General Fish license (Class A), Urban Fish license (Class U), trout stamp, and General Hunt license, Unit 12 A (North Kaibab) Habitat stamp, state waterfowl stamp, state migratory bird stamp, nonpermit-tags for archery deer, archery turkey, bear and mountain lion.	\$163.00 (Save \$50)	not available

Notes:

1. A Primary Adult license must be purchased before a spouse or child license can be issued.
2. For family licenses, a child is defined as at least age 14 and less than 18 years of age for the license year being purchased.
3. Super Conservation Hunt (Class M) and Super Conservation Combination Hunt and Fish (Class N) licenses can only be purchased at Department offices. Family licenses (Class J and K) can be purchased online and at all Department offices. They cannot be purchased through the draw or at license dealers.
4. All stamps and tags included in the Super Conservation Licenses are only valid during the appropriate seasons, and in conjunction with the appropriate hunt permit-tag issued through the draw process. The North Kaibab Habitat Stamp is only valid if you are drawn for a Unit 12A deer hunt.

Other Licenses Only Available at Arizona Game and Fish Offices

LIFETIME LICENSES

Available only to Arizona residents. License valid for lifetime. Fee schedule varies by license type and age. For more information, visit www.azgfd.gov and type "lifetime license" in the search box.

- General Fishing, Class A – valid all species except trout
- General Hunting, Class G
- Combo Hunt and Fish, Class F – valid all species
- Trout Stamp – validates Class A for taking of trout
- Wildlife Benefactor – includes Combo Hunt and Fish privileges

COMPLIMENTARY LICENSES

Must meet certain criteria to qualify for free licenses. Call (602) 942-3000 for more information or visit www.azgfd.gov.

- **Apprentice** – Resident licensed hunters are able to obtain a free Apprentice Hunting License, valid for two consecutive days, for use when mentoring a new hunter. This affords new hunters the opportunity to "try before you buy," under the supervision of a licensed hunter. A mentor must be a bona fide resident of this state who is at least 18 years of age and must possess a class F, G, J, K, M or N license or a complimentary or lifetime license. A mentor may apply for no more than two apprentice hunting licenses per calendar year. This license is not valid for big game.
- **Pioneer** – Call (602) 942-3000 for more information or visit www.azgfd.gov.
- **Disabled Veteran** – Call (602) 942-3000 for more information or visit www.azgfd.gov.

Draw Information

The Draw

When the number of hunt permits for a species in a particular area must be limited to prevent over-harvest of wildlife, the Commission Order governing seasons for that species assigns a hunt number to a designated area, and a hunt permit-tag is required to take that species in that area. Hunt permit-tags are issued through a computerized random drawing. Big game tags not issued through the drawing process are nonpermit-tags. Nonpermit-tags may be purchased directly from Department offices or through license dealers.

Qualifications

Individuals wishing to participate in a drawing or to purchase bonus points must apply online or in writing using the Hunt Permit-Tag Application Form, and submit the form by the deadline specified in the Hunt Permit-tag Application Schedule found in the current year's hunt regulations (page 12).

Each applicant must possess a valid license for the year in which the hunt will take place or possess a lifetime, pioneer or disabled veteran's license. Non-resident Three-Day Class H licenses may not be used in applying for big game hunt permit-tags. **Youth applying for big game hunts must be licensed.** Applicants not licensed for the year in which the hunt will take place must submit the information and fees required for a license on **each** paper application submitted. Only one license will be issued to you and you will receive a refund for the other license fees submitted. The license will not be issued and mailed until the draw is complete.

Applying For A Hunt

Paper applications for hunt permit-tags must be made on Hunt Permit-Tag Application Forms available at Department offices, website, and license dealers. Please use the current year's application form, that is WHITE in color. **Do not cut or alter application form.** Applications not prepared in a legible manner may be deemed not valid and shall be rejected as specified in R12-4-104(O). Use standard blue or black ink (no gel ink).

No more than four people may apply on one application in one envelope. All applicants in a group must apply for the same hunt number(s)

and in the same order of preference on the same form.

No person, including juniors, may submit more than one valid application per genus of wildlife in any calendar year, except as specified in R12-4-104(L), when genera are drawn in multiple drawings; however the annual bag limit still applies.

Each applicant shall complete only one block per application.

No more than one genus may be included on each Hunt Permit-Tag Application Form. Use a separate form, payment and envelope for each genus of wildlife you wish to hunt. You can list a general hunt as your first choice and another weapon type hunt for the same genus as another choice on the same application—just be sure they are in the same numerical series. Use only one application per genus, even if you are mixing weapon choices.

Only a single application and the correct fees must be included in one (1) envelope. More than one (1) application in an envelope may result in rejection of all applications.

Hunt Permit, Bonus Points Disclaimer

The issuance of any big game permit has no express or implied guarantee or warranty of hunter success. Any person holding a valid permit assumes the risk that circumstances beyond the control of the Arizona Game and Fish Department may prevent the permit holder from using the permit. In such situations, the Arizona Game and Fish Department disclaims any responsibility to reissue or replace a permit, to reinstate bonus points or to refund any fees, except under specific circumstances, such as activation of military or emergency personnel, as stated in R12-4-107(L).

Fees

Information about fees associated with the online draw process may be found on page 10.

When submitting paper applications, each applicant shall enclose the following fees:

1. The fee for the appropriate hunt permit-tag, which includes the permit application fee.
2. Fee for a hunting license, if a license is requested. Be sure to enclose license fees on

each application, if required, for each person who is applying on the application for a hunting license. Only one license will be issued per person.

3. Discounted hunt permit-tag fees are for "Juniors-Only" designated hunts. A youth must pay the higher fee unless applying only for "Juniors-Only" hunts.

Each payment enclosed with a hunt permit-tag application shall be made by certified check, cashier's check, money order, or personal check or draft payable to the Arizona Game and Fish Department. Cash will not be accepted and will result in rejection.

One personal check or money order can cover all fees for each application.

The permit and license fees are specified in the fee schedule on pages 6-7. The hunt permit-tag fees on page 6 include the non-refundable application fee.

Submitting Applications

The online application service will be available in early to mid-January, please check the Department's website or sign up for free e-newsletters for regular updates. You can register for e-news at www.azgfd.gov/signup.

Applications (except first-come, sandhill crane, and raptor applications) may be hand-delivered to Department offices in Phoenix, Mesa, Tucson, Flagstaff, Pinetop, Kingman or Yuma. Mailed applications must be sent only to the Department's Phoenix Office at P.O. Box 74020, Phoenix, AZ 85087-1052. On deadline days, Department business offices close at 5:00 p.m. (MST), but applications can be delivered to drop boxes until 7:00 p.m., (MST). Drop boxes are locked promptly at 7:00 p.m., (MST). All applications must be received by the Department before the deadline. Deadlines for submission are specified in the Hunt Permit-Tag Application Schedule on page 12. Postmarks don't count.

Applications will be accepted as soon as the applicable year's hunt regulations are available. Please consult the current year's hunt regulations as unit areas and season dates may change each year.

Complete and proper preparation of an application is the sole responsibility of the applicant.

Draw Information

What Happens To My Application?

Any application not properly prepared, submitted with insufficient fees or one that is illegible is not valid and will be rejected.

If there is an error that will result in the rejection of an application and the application is received by the Department on or before Friday, January 20, 2012, we will make three attempts within a 24-hour period to notify you by telephone if a phone number is provided. If we are able to contact you by phone and our customer service representatives can correct the application at that time, they will do so and enter the application in the Draw. If an error cannot be corrected by phone, we will still attempt to notify you of the error and advise you to re-submit your application. The applicants may then prepare a new Hunt Permit-Tag Application Form, include the appropriate fees and re-apply by the scheduled deadline date.

If any applicant in a group is rejected for any reason, all other applicants in that group will also be rejected and no bonus points will be awarded.

No hunt permit-tag will be issued to anyone in a group if there are not sufficient hunt permit-tags available for all applicants in that group.

Hunt permit-tags will be mailed to each successful applicant.

What If I'm Not Drawn?

Please use one of the methods (telephone or Internet) listed on this page to access draw results. These methods of access shall serve as the official notification of draw results.

Over-payments and hunt permit-tag fees received with unsuccessful applications will be returned to applicant "A," as shown on the Hunt Permit-Tag Application Form. Application and license fees will not be refunded. You will not be issued more than one license and a refund of any additional request will be issued.

If you or a member of your group elected to donate your fees or a portion thereof, the donation will not be refunded.

If an application is rejected and a license has been requested, the license will not be issued. The license fee will be refunded, however, the application fee will not be refunded.

Unsuccessful, valid applications will be awarded bonus points.

Big game hunt permit-tags remaining after the drawing will be issued on a first-come, first-served basis as specified in the hunt permit-tag application schedule on page 12.

Obtaining A Bonus Point Only

In the event you do not wish to participate in a big game drawing for pronghorn antelope or elk, but still wish to accumulate bonus points for these genera, you may "obtain a bonus point."

When completing your application, you must choose the bonus point hunt number established for that genus as your first choice. A bonus point hunt number is established within each applicable Commission Order. If you choose this hunt number, you may not choose any other hunt number on your application. **If the bonus point hunt number is any choice other than the first choice or any other hunt numbers appear on the application, your**

application will be rejected. You may obtain only one bonus point per genus per drawing.

To obtain a bonus point, the individual must be 10 years old by the deadline date as specified in the hunt permit-tag application schedule on page 12.

To obtain a bonus point, you must have previously purchased a hunting license or apply for a hunting license through the draw for the year in which the hunt will take place. You must also include the application fee per applicant. If applying for a bonus point, you will not receive a refund on the license fee or the application fee. Do not include the fee for the hunt permit-tag for the genus in which you are applying for the bonus point. **A bonus point costs you only the license fee (if needed) and the \$7.50 application fee per applicant.**

If applying for more than one species for bonus points, you must complete a separate application for each species. Only a single application and the correct fees may be included in one envelope.

If you apply for a bonus point only using the established bonus point hunt number, you may **NOT** submit another application for the same genus. To do so will cause both applications to be rejected as duplicate applications.

All applicants in a group must apply for the same established bonus point hunt number. The application will not be included in the random number drawing and the individual(s) on the application will each receive a bonus point for that genus.

Useful Phone Numbers

Want To Know If You Were Drawn?

Call the Arizona Game and Fish Department's automated service at (602) 942-3000. Press 2 and follow voice prompts. You must provide your Department ID Number and birth date. This service is free of charge (long distance charges may apply). Or visit the Arizona Game and Fish Department website at: www.azgfd.gov.

Main Number: (602) 942-3000

Choose 1 for known extension or name

Choose 2 for Draw, Bonus Points and Hunting and Fishing license info.

Choose 3 for Watercraft

Choose 4 for Regions

Choose 5 for Customer Service

Choose 6 for Shooting Range

Report a Game or Fish Violation

1 (800) 352-0700

Report Vandalism or Livestock Depredation

1 (800) VANDALS (826-3257)

Mandatory Harvest Reporting of:

These numbers are only for reporting your bear, mountain lion and archery deer kills.

Bear 1 (800) 970-BEAR (2327)

Lion 1 (877) 438-0447

Archery Deer 1 (866) 903-DEER (3337)

How to Apply for the Draw

The online application will be available early to mid-January.

How to Submit an Online Application

You will be able to apply for big game hunts and bonus points at www.azgfd.gov prior to deadline. There are many advantages in submitting an online application. By using the online method, you can meet deadlines without mailing applications or traveling to a department office to drop off applications. The possibility of your application being rejected is drastically reduced due to the fact that the online application program will prompt you to accurately complete your application.

Additionally, at the time of application you will only have to pay for the application fee, the license fee (if you have not previously purchased a license for the year in which the hunt takes place) and any donations you might wish to make to the Big Game Habitat Fund. Hunt permit-tag fees will be charged after the drawing is completed and you are successful in the draw. This eliminates the requirement to pay your tag fees in advance and/or issue a refund if you are not successful in the draw. Costs are identical to the paper application process. No additional fees are charged for using the online application.

If you are applying for a bonus point, you are charged only the application fee and the license fee (if needed). A valid license for the year in which the applicable hunt will take place is required to apply for a

hunt permit-tag or a bonus point. A valid credit or debit card (Visa or MasterCard) must be used when applying online.

Please be aware that if you are successful in the draw and the credit or debit card used for the application is not approved for the amount of the required fees after the draw, your application will be rejected. The department is not responsible for any overdraft charges incurred due to insufficient funds. If your credit or debit card is lost or stolen after using it to apply online or if it should expire prior to the draw, you may update your credit or debit card information online by selecting the “update my payment information” option and providing a valid credit or debit card number prior to the completion of the draw. Even if you are successful in the draw, your application will be rejected if payment on your credit or debit card is declined.

To apply online, simply log on to the Arizona Game and Fish Department Web site at azgfd.gov, place the cursor on “Big Game Draw” located on the green bar on the main Web page and follow the step-by-step instructions. Please have your hunter list completed with all the required information for each hunter prior to logging on to apply.

Completing Your Paper Hunt Permit-tag Application Form

If you choose not to participate in the online application, you must correctly fill out and sign a paper hunt permit-tag application form and submit it by mail or drop it off to any of the seven Arizona Game and Fish Department offices along with a check or money order for the correct amount. Paper application forms are available at all Department offices, more than 300 license dealers statewide, and as a downloadable PDF electronic document from the Department’s website at www.azgfd.gov/draw. A list of dealers can be found on the Department’s website. The use of the PDF form requires that the free Adobe Reader software be installed on your computer. The PDF form can be printed from your computer and then filled out using an ink pen or you can fill it out on your computer using your keyboard (this form does not alert you if an error is made). Once the form has been correctly filled out, it must be printed, signed and submitted by mail or dropped off at the Department along with a check or money order for the correct amount.

R12-4-104 and R12-4-114 explain application and drawing procedures in detail. Complete and proper preparation of an application is the sole responsibility of the applicant. If any applicant in the group fails to complete any required portion of the application, all applicants in the group will be rejected.

Numbered paragraphs correspond to numbers circled on the SAMPLE form, use it to assist you

in completing your form, which can be found online, at any license dealer or Department office.

1 Enter the hunt number(s) of the hunt(s) in which you wish to participate. The hunt number will indicate the genus (deer, turkey, etc.) and area you want to hunt. **Do not use the Game Management Unit Number.** Hunt numbers are listed in the far left column of each Commission Order. Deer hunts are in the 1000 series, turkey hunts are in the 4000 series, etc. All hunt numbers on an application must be in the same series. **YOU CANNOT MIX HUNT SERIES NUMBERS, BUT YOU CAN MIX WEAPON TYPES WITHIN A SERIES.** You must submit a separate application for each genus (series). No more than five hunt choices can be requested. You may request fewer. You do not have to fill in all the blocks. You may only apply for either a bonus point or a valid hunt number for any genus, NOT both.

2 Enter your correct date of birth (mm/dd/yyyy).

3 Enter your Social Security Number. In accordance with Federal Requirement, 42 U.S.C. Section 666 (A)(13) and A.R.S. 25-320 (P) and 25-502 (K), all applicants **must** provide their valid Social Security Number in the space provided. This is kept on file with the Arizona Department of Economic Security for use in identifying and tracking child support offenders. Any invalid SSN will result in rejection of the application. If you are not a U.S. citizen you must

write “NOT US CITIZ” in the Social Security field. If you are not a U.S. citizen, you must obtain a Department I.D. Number prior to submitting and enter it on the application. See #6. You may obtain a Department issued ID number by calling (602) 942-3000 during business hours.

4 Check the appropriate resident or nonresident box. Resident means a person who has been a bona fide resident of the state of Arizona for six months immediately preceding the date of application, or a member of the Armed Forces who has been stationed in Arizona for a period of 30 days immediately preceding the date of application for a license.

5 Enter your valid Arizona hunting license number for the year in which the hunt for which you are applying occurs. The hunting license number consists of two letters and six numbers. You may purchase a license through the draw by completing the License Application Form at the bottom of the application and submitting payment with each of your applications if you are not licensed.

6 Enter your Department I.D. Number (formerly called Sportsman I.D.). This number is for those individuals who choose to use a Department issued I.D. Number instead of a social security number to track bonus points or for non-U.S. citizens. This is a permanent number and is to be used on all hunt applications. Your I.D. Number (if different from SSN) is vital to track your bonus points and to

How to Apply for the Draw

ensure that you receive the proper credits. Using a different number may result in your not receiving proper bonus point credits. An I.D. Number may be obtained by calling the Department. You **must** still provide a valid SSN even if you provide a valid Department I.D. Number. See #3.

7 Enter your correct full name (last name first), your P.O. Box or home mailing address, city, state and zip code.

8 The Department will make three attempts within a 24-hour period to notify you of errors that will result in the rejection of your application if the application is received on or before Friday, January 20, 2012. If you wish to participate in this service, please list a telephone number where you can be reached. You are not required to enter your telephone number.

9 Each individual applying, or an appointed individual, must sign the appropriate application section.

COMPLETE 10-16 ONLY IF APPLYING FOR A LICENSE.

10 Enter M for Male, F for Female.

11 Enter your weight in pounds.

12 Enter your height in feet and inches.

13 Enter the appropriate abbreviation for hair color:

- | | |
|--------------|-------------|
| BLD - Bald | BLK - Black |
| BLN - Blonde | BRN - Brown |
| GRY - Gray | RED - Red |
| SDY - Sandy | WHT - White |

14 Enter the appropriate abbreviation for eye color:

- | | | |
|-------------|------------|-------------|
| BLK - Black | BLU - Blue | BRN - Brown |
| GRN - Green | GRY - Gray | HZL - Hazel |

15 Enter the number of years and/or months that you have been a resident of Arizona. (See page 10,

APPLICANT A

	First Choice Hunt Number	Second Choice Hunt Number	Third Choice Hunt Number	Fourth Choice Hunt Number	Fifth Choice Hunt Number
--	--------------------------	---------------------------	--------------------------	---------------------------	--------------------------

1

Date of Birth (m m) (d d) (y y y y)		Federal Requirement: Social Security Number		Check One
2				Non-resident <input type="checkbox"/>
Arizona Hunting License Number (must include the 2 letter prefix)		Department I.D. Number if different from SSN		Resident <input type="checkbox"/>
5		6		4
Last Name	First	M.I.		
7				
Address (must use home mailing address)				
City		State	Zip Code	
8				
Daytime Phone Number		SIGN ON LINE BELOW		
9				

Signature (Must be signed by or for Applicant A) **X**

LICENSE FORM • A	Complete only to apply for a Hunt License	Sex	Weight	Height Ft. In.	Hair	Eyes	AZ Residency Yrs. Mos.
		10	11	12	13	14	15
	Class G Hunting 16	Res	A <input type="checkbox"/>	Class G Hunting	Non-Res	D <input type="checkbox"/>	No license refund will be issued if you are not drawn.
Class F Hunt/Fish	Res	B <input type="checkbox"/>	Class F Hunt/Fish	Non-Res	E <input type="checkbox"/>		
Class F Youth Hunt/Fish	Res	C <input type="checkbox"/>	Youth Hunt/Fish	Non-Res	F <input type="checkbox"/>		

In order to participate in the draw, you must have or apply for a license. If you are not licensed at the time you submit your Hunt Permit-tag Application Form, you must apply for a license on each application you submit by completing the license portion of the application form. The license fee must be included with each application. See the applicable hunt regulations for license fees.

Completing Your Hunt Permit-Tag Application Form, #4, to determine if you qualify.) No entry is required here for a nonresident applicant.

16 Check the box next to the license type which you wish to purchase. **If you are requesting a license on more than one application, you must specify the same class of license on each application and include the license fee with each application. You will not be issued or charged for more than one license.** If you are not licensed for the year in which the hunt will occur, you must complete the

License Application Form for each genus applied for and include payment for a license with each application. If you are drawn for more than one genus, only one license will be issued in your name. If you are not drawn, you will be refunded only the hunt permit-tag fee. You must possess or purchase a license to participate in a drawing or to purchase a bonus point. No refunds will be issued for license or application fees if you apply in a drawing and are unsuccessful in the drawing. **If you do not check the box next to the license type you wish to purchase, your application will be rejected.**

Help Arizona's Big Game Species: Donate to the Big Game Habitat Fund

Arizona's array of big game species is one of the most diverse in the nation. By contributing to the Big Game Habitat Fund, you become our partner in conservation, helping the Arizona Game and Fish Department improve wildlife habitat across the state.

Funds derived from hunter donations are used to conduct habitat improvement projects for all of Arizona's big game species. To view some of the projects accomplished with these funds please visit the Department's website at: www.azgfd.gov/landowner.

You can become part of Arizona's success story by donating a portion of your refund to big game habitat projects. Do so by entering the amount of your donation in the space provided. This is a voluntary donation which will be deducted from your refund.

17 Enter the amount you wish to donate in this block. This donation will be subtracted from your refund if you are eligible for a refund.

17	If unsuccessful, I wish to donate \$ _____ from my refund to the Big Game Habitat Fund.
-----------	---

Hunt Permit-tag Application Schedule – Winter 2012

Hunt permit-tag applications will be accepted and processed in accordance with R12-4-104 and R12-4-114 and this schedule.

Drawing				
	ACCEPTANCE DATES¹	CORRECTION PERIOD²	DEADLINE DATES³	
HUNT	Applications accepted on or after:	Deadline 5 p.m. (MST) in Department offices	Deadline 7 p.m. (MST) in Department offices on:	Hunt permit-tags and refund warrants mailed out by:
Antelope	(See note 1)	Jan. 20, 2012	Feb. 14, 2012	April 20, 2012
Elk	(See note 1)	Jan. 20 2012	Feb. 14, 2012	April 20, 2012

First Come⁴		
	Applications accepted by mail on or after 8:00 a.m. (MST):	Permits available for purchase with a completed application at all Department offices after 8:00 a.m. (MST)
HUNT	ACCEPTANCE DATES	ACCEPTANCE DATES
Antelope	April 23, 2012	April 30, 2012
Elk	April 23, 2012	April 30, 2012

Notes:

- The Department will accept Hunt Permit-tag Applications for big game listed above as soon as the applicable year hunt information is available on the Department’s website (www.azgfd.gov), or from any Game and Fish Department office or license dealer, unless otherwise noted in the Hunt Permit-tag Application schedule.
- If a paper Hunt Permit-tag Application that is submitted contains an error and is received by Jan. 20, 2012, the Department will make three attempts within a 24-hour period to notify the applicant by telephone (if a phone number is provided).
- Department offices in Flagstaff, Kingman, Mesa, Phoenix, Pinetop, Tucson and Yuma will close for business at 5:00 p.m. (MST); completed applications will be accepted at these locations until 7:00 p.m. (MST) on deadline days. No applications will be accepted after this time regardless of the postmark. Deadline dates and times will apply to online as well as paper applications. Deadline dates may be extended in the event of a Department-related system failure.
- First come permits are issued if available and will sell very quickly. Applicants are advised to check with the Department before submitting an application for leftover permits. A listing of leftover permits is available online at www.azgfd.gov under “Big Game Draw” or at any Department office. To submit first come applications by U.S. mail only, please send to: 5000 W. Carefree Highway, Phoenix, AZ 85086, ATTN: DRAW/FIRST COME.

Hunter Education



Hunter Education classes fill up quickly. If you need your Hunter Education card before your hunt, get ahead of the game and register now. To register for a Hunter Education class, visit www.azgfd.gov and select Education or call (602) 942-3000 or toll free at 1 (800) 824-2456.

Get Ahead of the Game

The purpose of Arizona's Hunter Education Program is to promote safe, knowledgeable and responsible hunter conduct, to emphasize the importance of wildlife management, laws and regulations, and to encourage the safe handling of firearms and bowhunting equipment.

Any individual nine years of age or older may complete a hunter education course offered through the Department. To hunt big game youth under the age of 14 must complete hunter education. While you must be 10 years of age to hunt big game you may complete Hunter Education at the age of 9 however, the hunter education completion card and certificate does not become valid until the child's 10th birthday.

You may take Hunter Education in Arizona two different formats: through a traditional classroom setting or an on-line curriculum. Both courses require a hands-on field day and exam. Classroom setting courses are a minimum of 12 hours of classroom learning. Bowhunter specific Hunter Education courses are also available however graduates will not receive a permanent bonus point.

Classroom courses are generally offered during weekends and week-nights across the state. Field days are conducted at a local shooting range.

At a minimum your Hunter Education Course will include the following topics:

- Responsibility, safety skills.
- Funding sources.
- Conservation, fair chase, fair share, hunters' ethics and hunters' image.
- Planning and preparation, maps and compasses, survival skills, coping with extreme weather and basic first aid.



- Firearm safety, nomenclature, function, handling and shot-selection.
- Basic muzzleloading, bowhunting, handguns, use of boats in hunting and use of off-highway vehicles.
- Wildlife conservation, management and identification.
- Marksmanship, rifle and shotgun shooting, hunting strategies, vital shots and care of game.
- Arizona hunting laws and regulations and licensing.

Parents are encouraged to participate in the course with their child. For veteran hunters, the course serves as an excellent refresher.

To register for a Hunter Education class, visit www.azgfd.gov and select Education or call (602) 942-3000 or toll free at 1 (800) 824-2456.

The Arizona hunter education program is not just for children or hunters. This educational program is a valuable experience for anyone who enjoys the outdoors and has an interest in conservation.

Clinics, Raffles and Partnerships

Arizona Antelope Foundation

Antelope hunters are encouraged to attend our annual Hunter Clinic, which typically is held in June. Presentation subjects will include optics, trophy evaluation, photography, taxidermy, practical field care, and hunting tactics for firearms and archery. In addition to the formal presentations, representatives from the Arizona Game and Fish Department usually are on hand to discuss the specific hotspots in the game management units drawn by the hunters in the audience. Look for details at www.azantelope.org.

Arizona Elk Society Elk Hunting Clinic

The Arizona Elk Society will hold its Annual Elk Hunting Clinic July 28, 2012. For information visit www.arizonaelksociety.org or call (623) 594-7074. This seminar will be full of great information on hunting elk with a bow or a rifle; locating elk during the early and late hunting seasons; effectively calling elk; as well as meat care, cape preparation, and proper use of optics to locate elk in the field. The clinic will be a great education tool for first time hunters and seasoned hunters. For more information about the Elk Hunting Clinic as well as the Arizona Elk Society visit www.arizonaelksociety.org.

Arizona Elk Society Junior Elk Hunters Camp

The Arizona Elk Society's Junior Elk Hunters Camp will be Oct. 11-14, 2012, at Happy Jack Lodge in Happy Jack, Ariz. This event is held every year in conjunction with the Unit 6A Juniors Elk Hunt. Thursday night the AES serves free dinner to all youth hunters and their families, after which they have a seminar on hunter safety, finding elk, meat care and more. There will be lots of free give-a-ways for the youth hunters. The Arizona Elk Society offers support throughout the weekend for game locating and retrieval, as well as anything else the youth need during the hunt. Check out this event and others at www.arizonaelksociety.org. Call (623) 594-7074 for information.

Arizona Elk Society Wildlife Habitat Work Projects

From May to August each year the Arizona Elk Society holds three to four large wildlife habitat improvement projects in elk range around Arizona. This is a great way to participate in outdoor events and give back to the habitat, youth, and the sport we all love. If you are interested in helping out please go to www.arizonaelksociety.org and sign up for the "Get Involved" volunteer list. Meals and camaraderie are provided at all the AES events to make it easier on the volunteers. We also hold youth events and camps and could always use new volunteers for those events too. Check us out at www.arizonaelksociety.org.

Arizona Big Game Super Raffle

Various state and national sportsmen's groups have put together an annual raffle for one each of the 10 big game species in Arizona. The 365-day season dates are Aug. 15, 2012, through Aug. 14, 2013, and include most units. The drawing will be held Saturday July 14, 2012, in conjunction with the annual Outdoor Experience 4 All banquet. An Optics Raffle, featuring a full array of Swarovski equipment, is also being offered as part of the Super Raffle, as well as a fully guided trophy elk hunt. Since its inception in 2006, the Super Raffles have contributed in excess of \$3.4 million toward completing various wildlife projects here in the state of Arizona. For ticket prices, raffle rules, or other questions, please visit the AZBGSR website at www.arizonabiggamesuperraffle.com.

Rocky Mountain Elk Foundation Junior Elk Hunters Camp

The Rocky Mountain Elk Foundation will host a Junior Elk Hunter Information Camp on Oct. 11-14, 2012, at St. Joseph's Youth Camp (located approximately 3 miles north of Mormon Lake Lodge on Forest Service Rd. 90). Activities will begin at 4:30 p.m. Oct. 11 with an information seminar. Arizona Game and Fish Department personnel will make a presentation about elk concentrations and hunting rules and regulations. Other presentations will cover care of game meat, elk hunting techniques and hunter safety. Game and Fish personnel will be present to answer questions after the seminar. The seminar will be followed by a dinner that will be served to all junior hunters and members of their hunting parties. After dinner a raffle will be held with prizes for registered junior hunters, so be sure and arrive early to register and get your raffle ticket. We plan to conclude all camp activities and dinner by 6:30 p.m. so junior hunters can get ready for opening day. The camp will be staffed 24 hours day until 11 a.m. Oct. 14. Beginning at daylight and until dark coffee, hot chocolate and snacks will be available to visitors. A special prize will awarded to the first girl and boy (who have registered) to bring their elk by camp. An information letter will be mailed to all tag holders in early September. For more information contact Clair Harris at clair-linda@q.net.



State of the Art Collision Center
60-Foot Paint Booth

- Full body custom paint work
- Insurance/Warranty Repairs

Full Service Department

- All major repair
- Custom cabinetry work



CAMPING WORLD of Mesa
2222 E Main Street • Mesa, AZ
888.698.5199

Learn Outdoor Skills; Hunt, Trap, Fish, Shoot; Wildlife Recreation

Are you interested in hunting? Have you ever wanted to shoot a firearm? Are you curious about Arizona's wildlife and the outdoors?

Well you are in luck. The Arizona Game and Fish Department has teamed up with outdoor organizations to host numerous events across the state designed to teach you about these traditional outdoor activities. While many of the camps have a hunting portion to them, most camps are open

to people just interested in learning more about wildlife biology, ecology and their habits; target shooting; archery; wildlife viewing; camping; camaraderie and more.

Below is a listing of some of the upcoming events. For additional events and up-to-date information, visit www.azgfd.gov/outdoorskills.

Jan. 12, 2012: Novice Predator Hunt Camp

- Learn to call predator animals from expert predator callers.
- Location: FOB Lodge #9 in Mesa
- Contact: <http://arizonapredatorcallers.com>

Jan. 21, 2012: 2nd Annual Youth Shooting Event

- Learn to shoot safely; including archery, shotgun, rifles, air guns and more.
- Location: Wickenburg Shooting Range
- Contact: Craig Heath at (623) 882-2140 or cheath@azgfd.gov

Jan. 27-29, 2012: Becoming an Outdoors Women

- Women 18 and older; learn about outdoor activities in a relaxed atmosphere with other women. Fee required
- Location: Saguaro Lake Ranch, Mesa
- Contact: awf@azwildlife.org, or www.azwildlife.org

Jan. 27-29, 2012: Junior Hunt Camp

- Learn to hunt small game; predators; and javelina; some meals provided.
- Location: Florence area, Unit 37B
- Contact: Game and Fish, Tucson (520) 628-5376

Jan. 27-29, 2012: Juniors Javelina Hunt Camp

- Learn to hunt javelina and other outdoor skills; food provided.
- Location: Hillside, Unit 20C
- Contact: youthoutdoorsunlimited@gmail.com

Feb. 9, March 8, April 12, 2012: Novice Predator Hunt Camp

- Learn to call predator animals from expert predator callers.

- Location: FOB Lodge #9 in Mesa
- Contact: <http://arizonapredatorcallers.com>

Feb. 18, 2012: Southeastern Arizona Quail Hunt

- Learn to hunt quail behind pointing dogs; lunch included.
- Location: Sonoita, Las Cienegas National Conservation Area, Unit 34B
- Contact: Dave Higgins (520) 378-4114

Feb. 17-19, 2012: Women's Javelina HAM Hunt Camp

- Learn to hunt javelina; outdoor skills activities; food provided.
- Location: Three Points south of Tucson, Units 36A, 36B, and 36C.
- Contact: youthoutdoorsunlimited@gmail.com

Feb. 18-20, 2012: Youth Trappers Camp

- Learn wildlife trapping from certified instructors; open to ages 10-17; meals provided.
- Location: Mayer, Chauncey Ranch
- Contact: Bob Rhoton by phone at (928) 532-5776, or Don Rohla at (928) 636-0585

Feb. 24-26 Javelina Hunt and Outdoor Fair

- Learn to hunt javelina; outdoor skills activities; exhibitor booths.
- Location: Prescott area, Units 17A/B, (19B and 20A)
- Contact: www.huntingfair.com

March 2-4, 2012: Juniors Jackrabbit Kamp

- Hunter education graduates (age 10-14); learn to hunt jackrabbits; outdoor skills activities; food provided.

- Location: Southwest of Tucson, Three Points, Units 36A, 36B and 36C
- Contact: Lisa Marie Gandara (520) 312-8099 or azsci@yahoo.com

April 20-22, 2012: Becoming an Outdoors Women

- Women 18 and older; learn about many outdoor activities in a relaxed atmosphere with other women. Fee required.
- Location: Friendly Pines Camp, Prescott
- Contact: awf@azwildlife.org, or www.azwildlife.org

April 20-22, 2012: Youth Turkey Camp

- Learn to call and hunt wild turkeys; develop outdoor skills; mentoring; food provided.
- Location: Happy Jack, Units: 6A and 5A/5B
- Contact: Tim Denny at dennysden@msn.com, or (928) 301-0853

April 20-22, 2012: Youth Turkey Camp

- Learn to call and hunt wild turkeys; develop outdoor skills; mentoring; food provided.
- Location: Colcord Ridge Campground, east of Payson, Units: 23 and 4A/4B
- Contact: Rich Williams at rich@saselectric.com, or (602) 881-6815

April 20-22, 2012: Post Wallow Fire Turkey Sciences Field Workshop

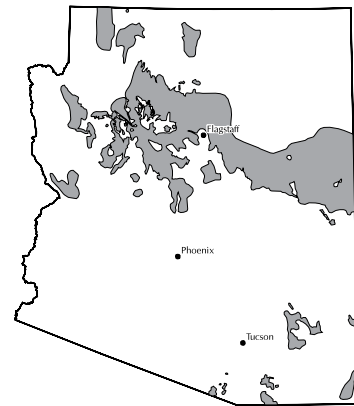
- Hands on event about wild turkey conservation; biology; effects of the Wallow Fire; hunting tips; food provided.
- Location: White Mountains, Greens Peak, Units 1 and 27
- Contact: youthoutdoorsunlimited@gmail.com

A big "THANK YOU" goes out to all the organizations that are dedicated to the hunting and angling heritage and are making these introductory events possible.

Arizona Bowhunters Association, Arizona Elk Society, Arizona Pred-

ator Callers, Arizona Wildlife Federation, Cochise Bird Dog Club, CouesWhitetail.com, National Wild Turkey Federation – Arizona Chapter, Outdoor Experience 4 All, Rocky Mountain Elk Foundation, Safari Club International – Arizona Chapter, Southwest Fur Harvesters, Wickenburg Sportsmen's Club, Youth Outdoors Unlimited

Pronghorn Antelope Hunts



■ Distribution

For further information on pronghorn antelope, their habitat, range, natural history, or where you can hunt them in Arizona, please visit www.azgfd.gov.

LEGAL REQUIREMENTS

License Required	Any valid hunting or combination license EXCEPT a Three-Day Hunting (Class H) or an Apprentice Hunting License (See tables on pages 6–7 for Resident and Non-resident license fees).
Tag Required	Hunt Permit-tag obtained only through application and draw process as prescribed in R12-4-104 and R12-4-114.
Hunt Numbers Required	When applying for big game hunt permit-tags, you must use hunt numbers.
Legal Methods of Take	General Hunt: Any firearm, bow and arrow, or crossbow as prescribed in R12-4-304. Muzzleloader Hunt: Muzzleloader weapons as prescribed in R12-4-101 and R12-4-318, crossbow or bow and arrow as prescribed in R12-4-304. Archery-Only Hunt: Bow and arrow as prescribed in R12-4-304 and R12-4-318 and/or crossbow as allowed under R12-4-216.
Legal Animal Definition	Buck antelope means a male pronghorn antelope, as defined in R12-4-101.
Bag Limit	One (1) pronghorn antelope per calendar year, except as prescribed in R12-4-120.

To hunt pronghorn antelope in Arizona you need a valid Arizona hunting or combination license and an antelope tag. To hunt antelope in any season, you must apply through a draw for a hunt permit-tag.

Pronghorn Antelope: Commission Order 3

GENERAL PRONGHORN ANTELOPE

Open Areas do not include areas within municipal parks, municipal preserves, county parks, county preserves, airports, golf courses, or posted water treatment facilities (except as specifically opened in this Commission Order) or areas closed to hunting under A.R.S. Sections 17-303 and 17-304 or Commission Rules R12-4-301, R12-4-801, R12-4-802 and R12-4-803.

Hunt No.	Season Dates	Notes	Open Areas	Legal Wildlife	Permits
2000	BONUS POINT ONLY – See page 9 (no other hunt numbers may be chosen in conjunction with this one).				
2001	Sep 7 - Sep 16, 2012		1	Buck antelope	20
2002	Sep 7 - Sep 16, 2012		2A	Buck antelope	20
2003	Sep 7 - Sep 16, 2012		2C	Buck antelope	15
2004	Sep 7 - Sep 16, 2012		3A	Buck antelope	15
2005	Sep 7 - Sep 16, 2012		3C	Buck antelope	2
2006	Sep 7 - Sep 16, 2012		4A	Buck antelope	12
2007	Sep 7 - Sep 16, 2012		4B	Buck antelope	20
2008	Sep 7 - Sep 16, 2012	(6,14)	5A	Buck antelope	7
2009	Sep 7 - Sep 16, 2012	(6,14)	5B	Buck antelope	26
2010	Sep 7 - Sep 16, 2012		6A	Buck antelope	6
2011	Sep 7 - Sep 16, 2012	(9)	6B South	Buck antelope	2
2012	Sep 7 - Sep 16, 2012	(14)	7	Buck antelope	40

Pronghorn Antelope Hunts

Pronghorn Antelope: Commission Order 3 (continued)

GENERAL PRONGHORN ANTELOPE

Open Areas do not include areas within municipal parks, municipal preserves, county parks, county preserves, airports, golf courses, or posted water treatment facilities (except as specifically opened in this Commission Order) or areas closed to hunting under A.R.S. Sections 17-303 and 17-304 or Commission Rules R12-4-301, R12-4-801, R12-4-802 and R12-4-803.

Hunt No.	Season Dates	Notes	Open Areas	Legal Wildlife	Permits
2013	Sep 7 - Sep 16, 2012	(14)	9	Buck antelope	27
2014	Sep 7 - Sep 16, 2012	(14)	10	Buck antelope	70
2015	Sep 7 - Sep 16, 2012	(5,14)	12A and 12B	Buck antelope	2
2016	Sep 7 - Sep 16, 2012	(5,14)	13A	Buck antelope	15
2017	Sep 7 - Sep 16, 2012	(5,14)	13B	Buck antelope	5
2018	Sep 7 - Sep 16, 2012		17A	Buck antelope	4
2019	Sep 14 - Sep 20, 2012	(14)	18A	Buck antelope	10
2020	Sep 7 - Sep 16, 2012	(14)	18B	Buck antelope	25
2021	Sep 14 - Sep 20, 2012	(4,7)	19A (north of AZ Hwy 69/169, east of Fain Rd, west of FR 151/643, and north of US Hwy 89A)	Buck antelope	30
2022	Sep 14 - Sep 20, 2012	(4)	19B (north of Willow Creek Rd)	Buck antelope	5
2023	Sep 7 - Sep 16, 2012	(5,14)	21	Buck antelope	25
2024	Sep 7 - Sep 16, 2012	(4,14)	30A	Buck antelope	10
2025	Sep 7 - Sep 16, 2012	(13,14)	31 and 32	Buck antelope	3
2026	Sep 7 - Sep 16, 2012	(13,14)	34B	Buck antelope	1
----	Sep 7 - Sep 16, 2012	(11)	Hopi Hunt in Unit 4A	Buck antelope	---
----	Sep 7 - Sep 16, 2012	(11,14)	Hopi Hunt in Unit 5A	Buck antelope	---
----	Sep 7 - Sep 16, 2012	(11,14)	Hopi Hunt in Unit 5B	Buck antelope	---
----	Sep 7 - Sep 16, 2012	(12)	Fort Huachuca in Unit 35A	Buck antelope	---
Total					417

MUZZLELOADER PRONGHORN ANTELOPE

Open Areas do not include areas within municipal parks, municipal preserves, county parks, county preserves, airports, golf courses, or posted water treatment facilities (except as specifically opened in this Commission Order) or areas closed to hunting under A.R.S. Sections 17-303 and 17-304 or Commission Rules R12-4-301, R12-4-801, R12-4-802 and R12-4-803.

Hunt No.	Season Dates	Notes	Open Areas	Legal Wildlife	Permits
2027	Sep 7 - Sep 16, 2012		2B	Buck antelope	10
2028	Sep 7 - Sep 16, 2012	(1)	3B North	Buck antelope	5
2029	Sep 7 - Sep 16, 2012		8	Buck antelope	20
2030	Sep 7 - Sep 16, 2012	(14)	15A and 15B	Buck antelope	2
2031	Sep 7 - Sep 16, 2012	(4)	17B	Buck antelope	2
2032	Sep 7 - Sep 13, 2012	(14)	18A	Buck antelope	5
2033	Sep 7 - Sep 13, 2012	(4)	19A (north of US Hwy 89A)	Buck antelope	15
2034	Sep 7 - Sep 13, 2012	(4)	19B (north of Willow Creek Rd)	Buck antelope	5
Total					64

ARCHERY-ONLY PRONGHORN ANTELOPE

Open Areas do not include areas within municipal parks, municipal preserves, county parks, county preserves, airports, golf courses, or posted water treatment facilities (except as specifically opened in this Commission Order) or areas closed to hunting under A.R.S. Sections 17-303 and 17-304 or Commission Rules R12-4-301, R12-4-801, R12-4-802 and R12-4-803.

Hunt No.	Season Dates	Notes	Open Areas	Legal Wildlife	Permits
2035	Aug 24 - Sep 6, 2012		1	Buck antelope	30
2036	Aug 24 - Sep 6, 2012		3A	Buck antelope	10
2037	Aug 24 - Sep 6, 2012	(1)	3B North	Buck antelope	10
2038	Aug 10 - Aug 23, 2012	(2)	3B South	Buck antelope	5
2039	Aug 24 - Sep 6, 2012	(2)	3B South	Buck antelope	5
2040	Aug 24 - Sep 6, 2012		4B	Buck antelope	20
2041	Aug 24 - Sep 6, 2012	(6)	5A	Buck antelope	4
2042	Aug 24 - Sep 6, 2012	(6)	5B	Buck antelope	13
2043	Aug 24 - Sep 6, 2012	(3,8)	6B North (except Camp Navajo)	Buck antelope	10
2044	Aug 24 - Sep 6, 2012		7	Buck antelope	5
2045	Aug 24 - Sep 6, 2012		9	Buck antelope	5
2046	Aug 24 - Sep 6, 2012		10	Buck antelope	60
2047	Aug 24 - Sep 13, 2012		11M	Buck antelope	5
2048	Aug 24 - Sep 6, 2012	(5)	12A and 12B	Buck antelope	3
2049	Aug 24 - Sep 6, 2012		15A and 15B	Buck antelope	4
2050	Aug 10 - Aug 23, 2012		17B	Buck antelope	3
2051	Aug 24 - Sep 6, 2012	(4)	17B	Buck antelope	3
2052	Aug 24 - Sep 6, 2012		18A	Buck antelope	10
2053	Aug 24 - Sep 6, 2012		18B	Buck antelope	15

Pronghorn Antelope Hunts

Pronghorn Antelope: Commission Order 3 (continued)

ARCHERY-ONLY PRONGHORN ANTELOPE

Open Areas do not include areas within municipal parks, municipal preserves, county parks, county preserves, airports, golf courses, or posted water treatment facilities (except as specifically opened in this Commission Order) or areas closed to hunting under A.R.S. Sections 17-303 and 17-304 or Commission Rules R12-4-301, R12-4-801, R12-4-802 and R12-4-803.

Hunt No.	Season Dates	Notes	Open Areas	Legal Wildlife	Permits
2054	Aug 10 - Aug 23, 2012	(4,7)	19A (north of AZ Hwy 69/169 and east of Robert Rd, and north of US Hwy 89A)	Buck antelope	30
2055	Aug 24 - Sep 6, 2012	(4,7)	19A (north of AZ Hwy 69/169 and east of Robert Rd, and north of US Hwy 89A)	Buck antelope	30
2056	Aug 24 - Sep 6, 2012	(4)	19B (north of Willow Creek Rd)	Buck antelope	5
2057	Aug 24 - Sep 6, 2012	(5)	21	Buck antelope	15
2058	Aug 24 - Sep 6, 2012		27	Buck antelope	1
2059	Aug 24 - Sep 6, 2012	(13)	31 and 32	Buck antelope	6
----	Aug 24 - Sep 6, 2012	(11)	Hopi Hunt in Unit 5A	Buck antelope	---
----	Aug 24 - Sep 6, 2012	(11)	Hopi Hunt in Unit 5B	Buck antelope	---
----	Aug 24 - Sep 6, 2012	(3)	Camp Navajo in Unit 6B	Buck antelope	---
Total					307

Pronghorn Antelope Notes:

- 3B North Hunt Unit - That portion of Unit 3B located north of U.S. Hwy 60.
- 3B South Hunt Unit - That portion of Unit 3B located south of U.S. Hwy 60.
- Camp Navajo in Unit 6B is open to antelope hunting only to properly licensed hunters who meet the qualifications as "Authorized Participants" according to the installation hunting policies outlined on the Camp Navajo website. Applications for these hunts must be submitted to Arizona Game and Fish Department by the published deadline. Hunters must agree to the Camp Navajo hunting policies during the required registration at http://www.campnavajo.com/index.php?which_page=recreation. After registering, hunters will gain access to the hunt numbers required when submitting the application. All hunters are required to show proof of attendance to a hunter safety education course during paperwork submission for the Camp Navajo permit. Increases in Force Protection Conditions, training missions and industrial operations may result in partial or complete hunt cancellation at any time with little or no prior notification. In the event a hunt is cancelled, hunters drawn for these permits will not be reimbursed or otherwise compensated by the Arizona Game and Fish Department.
- Hunter access in this unit is restricted. Applicants should secure access before applying.
- The Grand Canyon-Parashant, Vermilion Cliffs, Sonoran Desert, Ironwood Forest, and Agua Fria National Monuments are open to hunting.
- In the northern portion of Unit 5A, access is permitted on the Clear Creek Ranch by written permission only by contacting the Hopi Tribe Wildlife and Ecosystems Management Program via e-mail at hophunts@hopi.nsn.us or by calling (928) 734-3606 or (928) 734-3605 from Monday-Friday 8am-5pm. Please contact in advance to gain access for hunting and scouting. In Unit 5B North access is permitted on the Hopi's Hart/Drye Ranch and in Unit 4A on the Hopi's Aja Ranch by signing in at designated sign-in boxes located at access points.
- Vehicle access into portions of 19A (specifically within the following: south of US Hwy 89A, east of Robert Rd, north of AZ Hwy 169/69, and west of FR151/643) is restricted. Foot access is unrestricted.
- 6B North Hunt Unit - That portion of Unit 6B located north of the following: Beginning at the junction of U.S. Hwy 89A (mp 371) and FR 152 (Dry Creek Rd.); north on FR 152 to FR 152C (Boynton Pass Rd.); west on FR 152C to FR 525 (Red Canyon Rd.); northwest on FR 525 to the Red Rock Secret Mountain Wilderness boundary at Gate 2 of 9999 Red Canyon Rd.; westerly along the Red Rock Secret Mountain Wilderness boundary to the Sycamore Canyon Wilderness boundary (at the gate in section 18); southwesterly along the Sycamore Canyon Wilderness boundary to Dogie Trail (Forest Trail 116); northwest on Dogie Trail to Sycamore Creek.
- 6B South Hunt Unit - That portion of Unit 6B located south of the following: Beginning at the junction of U.S. Hwy 89A (mp 371) and FR 152 (Dry Creek Rd.); north on FR 152 to FR 152C (Boynton Pass Rd.); west on FR 152C to FR 525 (Red Canyon Rd.); northwest on FR 525 to the Red Rock Secret Mountain Wilderness boundary at Gate 2 of 9999 Red Canyon Rd.; westerly along the Red Rock Secret Mountain Wilderness boundary to the Sycamore Canyon Wilderness boundary (at the gate in section 18); southwesterly along the Sycamore Canyon Wilderness boundary to Dogie Trail (Forest Trail 116); northwest on Dogie Trail to Sycamore Creek.
- Hopi Trust lands in Units 4A, 5A, and 5B are open to both state and Hopi hunters under an agreement with the Hopi Tribe. A percentage of tags are set aside for Hopi Tribal member hunters. Hopi hunt numbers for these hunts must be obtained from the Hopi Tribe

Pronghorn Antelope Hunts

Pronghorn Antelope Notes continued:

Wildlife and Ecosystems Management Program by calling (928) 734-3606 or (928) 734-3605. Non-Hopi Tribal members cannot apply for these hunts. Applications for these hunts must be submitted to the Arizona Game and Fish Department on the standard form by the published deadline. The Hopi Wildlife and Ecosystems Management program has requested that all Hopi Tribal elk hunters for these hunts provide a sample for Chronic Wasting Disease testing. Please call 928-734-3606/3605 if you have any questions. If all permits for these hunts are not issued through the draw, the left-over permits will be available to all hunters (tribal and non-tribal) through the first-come, first-serve process. Hunt numbers for left over permits will be available on the AZGF website.

12. The Fort Huachuca Army Garrison in Unit 35A is open to pronghorn antelope hunting only to properly licensed military and Fort Huachuca civilian personnel holding a valid Fort Huachuca post hunting permit. Hunt numbers, season dates and/or special regulations must be obtained from Fort Huachuca. Increases in Force Protection may result in hunt cancellations at any time with little or no prior notification. In the event a hunt is cancelled due to an increase in security, hunters drawn for these permits will not be reimbursed or otherwise compensated by the Arizona Game and Fish Department. Applications for these hunts must be submitted to the Arizona Game and Fish Department by the published deadline.
13. The following Pima County parks and preserves are open to hunting: A-7 Ranch in Units 32 and 33, Emperita Ranch in Unit 34B, Bar V Ranch in Unit 34B, Sands Ranch in Unit 34B, and Clyne Ranch in Unit 34B. Hunting in County Parks, opened by this Commission Order, is not permitted within ¼ mile of any developed picnic area, developed camp ground, shooting range, occupied building, boat ramp, or golf course. Developed areas do not include trails.
14. Areas of private property within municipal boundaries in this hunt area are closed to pronghorn hunting during this hunt.

Hunt Success for 2011 seasons was not available at the time of printing. Hunt Success data will be included in the Hunt Arizona book, which is available for free online each May. Draw Odds = your chance of getting your first choice.

2011 Drawing Odds & Success Rate

Unit	Hunt Type	Date	Permits Authorized	1 st & 2 nd Choice	Draw Odds	Hunt Success
ANTELOPE						
General						
1	Buck	9/2-9/11	30	3066	1	***
2A	Buck	9/2-9/11	20	1112	2	***
2C	Buck	9/2-9/11	15	935	2	***
3A	Buck	9/2-9/11	15	824	3	***
3C	Buck	9/2-9/11	2	172	2	***
4A	Buck	9/2-9/11	12	843	2	***
4A (Hopi)	Buck	9/2-9/11	3	6	33	***
4B	Buck	9/2-9/11	15	899	2	***
5A	Buck	9/2-9/11	7	594	1	***
5A (Hopi)	Buck	9/2-9/11	3	13	50	***
5B	Buck	9/2-9/11	26	2470	2	***
5B (Hopi)	Buck	9/2-9/11	4	14	50	***
6A	Buck	9/2-9/11	5	286	3	***
6B South	Buck	9/2-9/11	2	82	5	***
7	Buck	9/2-9/11	40	2955	2	***
9	Buck	9/2-9/11	25	1537	2	***
10	Buck	9/2-9/11	70	6416	1	***
12	Buck	9/2-9/11	2	78	0	***
13A	Buck	9/2-9/11	15	392	6	***
13B	Buck	9/2-9/11	10	251	4	***
17A	Buck	9/2-9/11	4	221	3	***
18A	Buck	9/9-9/15	10	536	1	***
18B	Buck	9/2-9/11	35	1185	2	***
19A	Buck	9/9-9/15	30	1278	3	***
19B	Buck	9/2-9/11	0	2664	0	***
21	Buck	9/2-9/11	20	681	2	***
30A	Buck	9/2-9/11	10	245	5	***
31/32	Buck	9/2-9/11	4	307	2	***
34B	Buck	9/2-9/11	1	179	1	***
Muzzleloader						
2B	Buck	9/2-9/11	20	454	4	***
3B North	Buck	9/2-9/11	5	116	5	***
8	Buck	9/2-9/11	20	734	4	***
15A/15B	Buck	9/2-9/11	2	49	11	***
17B	Buck	9/2-9/11	3	79	4	***
18A	Buck	9/2-9/8	5	177	4	***
19A	Buck	9/2-9/8	15	406	3	***
34B	Buck	9/2-9/11	1	64	4	***
35	Buck	9/2-9/11	1	54	0	***
Archery						
1	Buck	8/19-9/1	30	348	13	***
3A	Buck	8/19-9/1	10	97	16	***
3B North	Buck	8/19-9/1	10	84	10	***
3B South	Buck	8/19-9/1	5	47	17	***
4B	Buck	8/19-9/1	20	202	14	***
5A (Hopi)	Buck	8/19-9/1	3	1	100	***
5A	Buck	8/19-9/1	7	98	15	***
5B (Hopi)	Buck	8/19-9/1	2	3	***	***
5B	Buck	8/19-9/1	13	302	7	***
6B	Buck	8/19-9/1	10	46	32	***
7	Buck	8/19-9/1	5	120	5	***
10	Buck	8/19-9/1	60	724	8	***
11M	Buck	8/19-9/1	5	59	13	***
12	Buck	8/19-9/1	3	21	0	***
15A/15B	Buck	8/19-9/1	4	32	0	***
17B	Buck	8/19-9/1	5	38	8	***
18A	Buck	8/19-9/1	10	103	15	***
18B	Buck	8/19-9/1	25	182	18	***
19A	Buck	8/19-9/1	30	306	17	***
19A	Buck	8/5-8/18	30	439	9	***
19B North	Buck	8/19-9/1	0	177	0	***
21	Buck	8/19-9/1	15	108	21	***
27 South	Buck	8/19-9/1	3	32	9	***
31/32	Buck	8/19-9/1	10	92	15	***
34B	Buck	8/19-9/1	1	43	0	***
35	Buck	8/19-9/1	1	30	10	***

Elk Hunts



■ Distribution

For further information on elk, their habitat, range, natural history, or where you can hunt them in Arizona, please visit www.azgfd.gov.

LEGAL REQUIREMENTS	
License Required	Any valid hunting or combination license EXCEPT a Three-Day Hunting (Class H) or an Apprentice Hunting License (See tables on pages 6–7 for Resident and Non-resident license fees).
Tag Required	Hunt Permit-tag obtained only through application and draw process as prescribed in R12-4-104 and R12-4-114. EXCEPT for General Nonpermit and Archery-Only Nonpermit seasons: a hunt nonpermit-tag must be obtained from a license dealer as prescribed in R12-4-114.
Hunt Numbers Required	When applying for big game hunt permit-tags, you must use hunt numbers.
Legal Methods of Take	General Hunt: Any firearm, bow and arrow, or crossbow as prescribed in R12-4-304. Muzzleloader Hunt: Muzzleloader weapons as prescribed in R12-4-101 and R12-4-318, crossbow or bow and arrow as prescribed in R12-4-304. Archery-Only Hunt: Bow and arrow as prescribed in R12-4-304 and R12-4-318 and/or crossbow as allowed under R12-4-216.
Legal Animal Definition	Bull elk means an antlered elk. Antlered means having an antler fully erupted through the skin and capable of being shed. Antlerless means not having an antler, antlers, or any part thereof erupted through the skin, as defined in R12-4-101.
Bag Limit	One (1) elk per calendar year, except as prescribed in R12-4-120.
<i>To hunt elk in Arizona you need a valid Arizona hunting or combination license and an elk tag. To hunt elk in General, Juniors-Only, Muzzleloader or Archery-Only seasons, you must apply through a draw for a hunt permit-tag. To hunt elk in a General or Archery-Only Nonpermit Tag season, you must obtain a hunt nonpermit-tag from a department office or license dealer. The same tag can be used in either the General or Archery-Only Nonpermit-tag season.</i>	
<i>The Department offers "Juniors-Only" designated hunts. If applying for a Juniors-Only hunt, do not reapply for the same species with other applicants on a separate application. Persons are eligible to participate up to and throughout the calendar year of their 17th birthday, provided that persons between the ages of 10 and 13 have satisfactorily completed a Hunter Education Course that is approved by the Director as per ARS 17-335 (C). If a person is applying for a Juniors-Only hunt and a regular hunt on the same application, the higher of the tag fees must be enclosed.</i>	

Motorized Big Game Retrieval on National Forest Lands

All National Forests are undergoing travel management planning, which will result in changes to motor vehicle access on national forest lands. National forests that have made a decision implementing the Travel Management Rule (<http://www.fs.fed.us/recreation/programs/ohv/final.pdf>) only allow motorized use on designated roads, trails, and areas as identified on a Motor Vehicle Use Map (MVUM). These maps are available for free at Forest Service offices.

In designating roads and trails, many forests have included or are in the process of including the limited use of motor vehicles within a specified distance of certain designated routes solely for the purpose of

retrieving a downed big game animal by an individual who has legally taken that animal. The Prescott National Forest released its MVUM in 2009; motorized big game retrieval off the designated system is not allowed on the forest. In July 2010, the Williams District of the Kaibab National Forest completed the environmental analysis for travel management and made a decision regarding roads and trails designated for motor vehicle use. As part of the decision, motor vehicles are allowed to travel up to one mile off either side of certain designated roads to retrieve elk. Motorized big game retrieval is not allowed for any other species.

Other national forests, including the Apache-Sitgreaves National Forests, Coconino National Forest, Tonto National Forest, and Coronado National Forest are engaged in travel management planning and have not yet issued decisions. Many of these forests may issue travel management decisions prior to the 2012 hunting season. If you have a permit to hunt in a Game Management Unit that includes one or more national forests, please contact the appropriate national forest(s) for updated information relative to motor vehicle use and motorized big game retrieval.

Elk Hunts

Elk: Commission Order 4

GENERAL ELK

Open Areas do not include areas within municipal parks, municipal preserves, county parks, county preserves, airports, golf courses, or posted water treatment facilities (except as specifically opened in this Commission Order) or areas closed to hunting under A.R.S. Sections 17-303 and 17-304 or Commission Rules R12-4-301, R12-4-801, R12-4-802 and R12-4-803.

Hunt No.	Season Dates	Notes	Open Areas	Legal Wildlife	Permits
3000	BONUS POINT ONLY – See page 9 (No other hunt number may be chosen in conjunction with this one).				
3001	Sep 28 - Oct 4, 2012		3A and 3C	Bull elk	40
3003	Sep 28 - Oct 4, 2012		4B	Bull elk	50
3004	Sep 28 - Oct 4, 2012		9	Bull elk	25
3005	Sep 28 - Oct 4, 2012	(35)	10	Bull elk	75
3006	Sep 28 - Oct 4, 2012	(10,35)	22 North	Bull elk	30
3007	Sep 28 - Oct 4, 2012	(12,35)	23 North	Bull elk	20
3008	Sep 28 - Oct 4, 2012	(18)	27	Bull elk	25
3009	Nov 30 - Dec 6, 2012	(18)	1, 2B, and 2C	Bull elk	365
3010	Nov 30 - Dec 6, 2012		3A and 3C	Bull elk	325
3011	Nov 30 - Dec 6, 2012		4A	Bull elk	414
3012	Nov 30 - Dec 6, 2012		4B	Bull elk	300
3013	Nov 30 - Dec 6, 2012	(3,20,35)	5A	Bull elk	291
3014	Nov 30 - Dec 6, 2012	(3,20,35)	5B	Bull elk	757
3015	Oct 26 - Oct 29, 2012	(20)	6A	Bull elk	125
3016	Nov 30 - Dec 6, 2012	(20)	6A	Bull elk	900
3017	Nov 30 - Dec 6, 2012	(15,20)	6B (except Camp Navajo)	Bull elk	190
3018	Nov 30 - Dec 6, 2012	(8,20,35)	7 East	Bull elk	325
3019	Nov 30 - Dec 6, 2012	(9,20,35)	7 West	Bull elk	275
3020	Nov 30 - Dec 6, 2012	(20)	8	Bull elk	500
3021	Nov 30 - Dec 6, 2012	(20,35)	9	Bull elk	275
3022	Nov 30 - Dec 6, 2012	(35)	10	Bull elk	575
3023	Nov 30 - Dec 6, 2012		19A	Bull elk	30
3024	Nov 30 - Dec 6, 2012	(16,35)	21	Bull elk	20
3025	Nov 30 - Dec 6, 2012	(10,35)	22 North	Bull elk	450
3026	Dec 7 - Dec 13, 2012	(10,35)	22 North	Bull elk	100
3027	Nov 30 - Dec 6, 2012	(11,35)	22 South	Bull elk	30
3028	Nov 30 - Dec 6, 2012	(35)	23	Bull elk	200
3029	Nov 30 - Dec 6, 2012	(18)	27	Bull elk	400
3030	Dec 7 - Dec 13, 2012	(1,18)	Escudilla Hunt Area in Unit 1	Antlerless elk	75
3031	Dec 7 - Dec 13, 2012	(18)	1, 2B, and 2C	Antlerless elk	315
3032	Oct 19 - Oct 25, 2012		3A and 3C	Antlerless elk	350
3033	Oct 19 - Oct 25, 2012		4A	Antlerless elk	122
3034	Oct 19 - Oct 25, 2012		4B	Antlerless elk	50
3035	Oct 19 - Oct 25, 2012	(3,20,35)	5A	Antlerless elk	121
3036	Oct 12 - Oct 18, 2012	(3,5,20,35)	5B North	Antlerless elk	285
3037	Oct 12 - Oct 18, 2012	(7,20,35)	5B South	Antlerless elk	450
3038	Oct 19 - Oct 25, 2012	(20)	6A	Antlerless elk	500
3039	Dec 7 - Dec 16, 2012	(15,20)	6B (except Camp Navajo)	Antlerless elk	200
3040	Dec 7 - Dec 16, 2012	(8,20,35)	7 East	Antlerless elk	125
3041	Sep 28 - Oct 4, 2012	(29,35)	7 East (excluding the Peaks Hunt Area)	Antlerless elk	10
3042	Oct 5 - Oct 11, 2012	(29,35)	7 East (excluding the Peaks Hunt Area)	Antlerless elk	10
3043	Oct 12 - Oct 18, 2012	(29,35)	7 East (excluding the Peaks Hunt Area)	Antlerless elk	10
3044	Oct 19 - Oct 28, 2012	(29,35)	7 East (excluding the Peaks Hunt Area)	Antlerless elk	10
3045	Oct 19 - Oct 25, 2012	(9,20,35)	7 West	Antlerless elk	550
3046	Dec 7 - Dec 13, 2012	(9,20,35)	7 West	Antlerless elk	100
3047	Dec 7 - Dec 13, 2012	(20)	8	Antlerless elk	475
3048	Oct 19 - Oct 25, 2012	(20,35)	9	Antlerless elk	250
3049	Dec 7 - Dec 13, 2012	(20,35)	9	Antlerless elk	250
3050	Oct 19 - Oct 25, 2012	(35)	10	Antlerless elk	825
3051	Dec 7 - Dec 16, 2012	(35)	10	Antlerless elk	800
3052	Oct 19 - Oct 25, 2012		19A	Antlerless elk	30
3053	Dec 7 - Dec 16, 2012		19A	Antlerless elk	20
3054	Oct 19 - Oct 25, 2012		21	Antlerless elk	25
3055	Oct 19 - Oct 25, 2012	(10,35)	22 North	Antlerless elk	275
3056	Oct 19 - Oct 25, 2012	(11,35)	22 South	Antlerless elk	25
3057	Dec 7 - Dec 13, 2012	(35)	23	Antlerless elk	200
3058	Oct 19 - Oct 25, 2012	(12,35)	23 North	Antlerless elk	25
3059	Oct 19 - Oct 25, 2012	(13,35)	23 South	Antlerless elk	25
3060	Oct 19 - Oct 25, 2012	(18)	27	Antlerless elk	305
----	Nov 30 - Dec 6, 2012	(28)	Hopi Hunt in Unit 4A	Bull elk	---

Elk Hunts

Elk: Commission Order 4 (continued)

GENERAL ELK

Open Areas do not include areas within municipal parks, municipal preserves, county parks, county preserves, airports, golf courses, or posted water treatment facilities (except as specifically opened in this Commission Order) or areas closed to hunting under A.R.S. Sections 17-303 and 17-304 or Commission Rules R12-4-301, R12-4-801, R12-4-802 and R12-4-803.

Hunt No.	Season Dates	Notes	Open Areas	Legal Wildlife	Permits
----	Nov 30 - Dec 6, 2012	(3,20,28,35)	Hopi Hunt in Unit 5A	Bull elk	---
----	Nov 30 - Dec 6, 2012	(3,20,28,35)	Hopi Hunt in Unit 5B	Bull elk	---
----	Oct 19 - Oct 25, 2012	(3,20,28,35)	Hopi Hunt in Unit 5A	Antlerless elk	---
----	Oct 12 - Oct 18, 2012	(3,5,20,28,35)	Hopi Hunt in Unit 5B North	Antlerless elk	---
----	Oct 1 - Oct 7, 2012	(15)	Camp Navajo in Unit 6B	Antlerless elk	---
----	Nov 23 - Dec 13, 2012	(15)	Camp Navajo in Unit 6B	Antlerless elk	---
----	Oct 19 - Oct 25, 2012	(15,17)	Camp Navajo in Unit 6B (Disabled Veteran)	Antlerless elk	---
----	Oct 1 - Oct 7, 2012	(15)	Camp Navajo in Unit 6B	Any elk	---
----	Oct 26 - Nov 1, 2012	(15)	Camp Navajo in Unit 6B	Any elk	---
----	Oct 19 - Oct 25, 2012	(15,17)	Camp Navajo in Unit 6B (Disabled Veteran)	Any elk	---
Total					13925

JUNIORS-ONLY ELK

Open Areas do not include areas within municipal parks, municipal preserves, county parks, county preserves, airports, golf courses, or posted water treatment facilities (except as specifically opened in this Commission Order) or areas closed to hunting under A.R.S. Sections 17-303 and 17-304 or Commission Rules R12-4-301, R12-4-801, R12-4-802 and R12-4-803.

Hunt No.	Season Dates	Notes	Open Areas	Legal Wildlife	Permits
3061	Oct 12 - Oct 18, 2012	(18)	1 and 2C	Antlerless elk	150
3062	Oct 12 - Oct 18, 2012		3A and 3C	Antlerless elk	200
3063	Oct 12 - Oct 18, 2012		4A	Antlerless elk	97
3064	Oct 12 - Oct 18, 2012	(20)	6A	Antlerless elk	500
3065	Nov 9 - Nov 15, 2012	(35)	22	Antlerless elk	50
3066	Nov 9 - Nov 15, 2012	(35)	23	Antlerless elk	30
----	Oct 12 - Oct 18, 2012	(28)	Hopi Hunt in Unit 4A	Antlerless elk	---
Total					1027

LIMITED OPPORTUNITY (GENERAL) ELK

Open Areas do not include areas within municipal parks, municipal preserves, county parks, county preserves, airports, golf courses, or posted water treatment facilities (except as specifically opened in this Commission Order) or areas closed to hunting under A.R.S. Sections 17-303 and 17-304 or Commission Rules R12-4-301, R12-4-801, R12-4-802 and R12-4-803.

Hunt No.	Season Dates	Notes	Open Areas	Legal Wildlife	Permits
3067	Sep 28 - Oct 4, 2012	(29,35)	Peaks Hunt Area in Unit 7 East	Bull elk	30
3068	Oct 5 - Oct 11, 2012	(29,35)	Peaks Hunt Area in Unit 7 East	Bull elk	30
3069	Oct 12 - Oct 18, 2012	(29,35)	Peaks Hunt Area in Unit 7 East	Bull elk	30
3070	Oct 5 - Oct 18, 2012	(14,35)	15A, 15B, and 18A	Bull elk	25
3071	Oct 5 - Oct 18, 2012	(14)	17A, 17B, 18B, 19B, 20A, and 20C	Bull elk	35
3072	Aug 3 - Aug 12, 2012	(14,31)	Antelope Mountain Hunt Area in Unit 1	Antlerless elk	10
3073	Aug 17 - Aug 26, 2012	(14,31)	Antelope Mountain Hunt Area in Unit 1	Antlerless elk	10
3074	Aug 31 - Sep 9, 2012	(14,31)	Antelope Mountain Hunt Area in Unit 1	Antlerless elk	10
3075	Sep 28 - Oct 7, 2012	(14,31)	Antelope Mountain Hunt Area in Unit 1	Antlerless elk	10
3076	Oct 12 - Oct 21, 2012	(14,31)	Antelope Mountain Hunt Area in Unit 1	Antlerless elk	10
3077	Oct 26 - Nov 4, 2012	(14,31)	Antelope Mountain Hunt Area in Unit 1	Antlerless elk	10
3078	Aug 3 - Aug 12, 2012	(14,33)	Flat Top Hunt Area in Unit 1	Antlerless elk	5
3079	Aug 17 - Aug 26, 2012	(14,33)	Flat Top Hunt Area in Unit 1	Antlerless elk	5
3080	Aug 31 - Sep 9, 2012	(14,33)	Flat Top Hunt Area in Unit 1	Antlerless elk	5
3081	Sep 28 - Oct 7, 2012	(14,33)	Flat Top Hunt Area in Unit 1	Antlerless elk	5
3082	Oct 12 - Oct 21, 2012	(14,33)	Flat Top Hunt Area in Unit 1	Antlerless elk	5
3083	Oct 26 - Nov 4, 2012	(14,33)	Flat Top Hunt Area in Unit 1	Antlerless elk	5
3084	Dec 7 - Dec 16, 2012	(14,33)	Flat Top Hunt Area in Unit 1	Antlerless elk	5
3085	Dec 21 - Dec 31, 2012	(14,33)	Flat Top Hunt Area in Unit 1	Antlerless elk	5
3086	Sep 14 - Sep 23, 2012	(14)	2A and 2B	Antlerless elk	40
3087	Sep 28 - Oct 7, 2012	(14)	2A and 2B	Antlerless elk	40
3088	Oct 12 - Oct 21, 2012	(14)	2A and 2B	Antlerless elk	30
3089	Aug 10 - Aug 19, 2012	(2,14)	3A and 4B Dry Lake	Antlerless elk	15
3090	Oct 19 - Oct 25, 2012	(3,4,6,14,28,35)	East Sunset, West Sunset, Meteor Crater, Twin Arrows, Two Guns, and Grapevine Hunt Areas in Units 5A and 5B North	Antlerless elk	37
3091	Sep 28 - Oct 4, 2012	(29,35)	Peaks Hunt Area in Unit 7 East	Antlerless elk	75
3092	Oct 5 - Oct 11, 2012	(29,35)	Peaks Hunt Area in Unit 7 East	Antlerless elk	75
3093	Oct 12 - Oct 18, 2012	(29,35)	Peaks Hunt Area in Unit 7 East	Antlerless elk	75
3094	Oct 19 - Oct 28, 2012	(29,35)	Peaks Hunt Area in Unit 7 East	Antlerless elk	75

Elk Hunts

Elk: Commission Order 4 (continued)

LIMITED OPPORTUNITY (GENERAL) ELK

Open Areas do not include areas within municipal parks, municipal preserves, county parks, county preserves, airports, golf courses, or posted water treatment facilities (except as specifically opened in this Commission Order) or areas closed to hunting under A.R.S. Sections 17-303 and 17-304 or Commission Rules R12-4-301, R12-4-801, R12-4-802 and R12-4-803.

Hunt No.	Season Dates	Notes	Open Areas	Legal Wildlife	Permits
3095	Nov 9 - Dec 13, 2012	(14,35)	15A, 15B, and 18A	Antlerless elk	200
3096	Oct 5 - Oct 18, 2012	(14)	17A, 17B, 18B, 19B, 20A, and 20C	Antlerless elk	150
3097	Nov 9 - Dec 13, 2012	(14)	17A, 17B, 18B, 19B, 20A, and 20C	Antlerless elk	250
3098	Aug 10 - Aug 23, 2012	(14,21)	Martinez Hunt Area in Unit 27	Antlerless elk	25
3099	Aug 10 - Aug 23, 2012	(14,19)	27 South	Antlerless elk	50
3100	Sep 14 - Sep 23, 2012	(14)	2A and 2B	Any elk	20
3101	Sep 28 - Oct 7, 2012	(14)	2A and 2B	Any elk	20
3102	Oct 12 - Oct 21, 2012	(14)	2A and 2B	Any elk	15
3103	Oct 19 - Oct 25, 2012	(3,4,6,14,35)	East Sunset, West Sunset, Meteor Crater, Twin Arrows, Two Guns, and Grapevine Hunt Areas in Units 5A and 5B North	Any elk	25
3104	Nov 9 - Dec 13, 2012	(14,35)	15A, 15B, and 18A	Any elk	150
3105	Nov 9 - Dec 13, 2012	(14)	17A, 17B, 18B, 19B, 20A, and 20C	Any elk	150
3106	Sep 21 - Sep 27, 2012	(14,35)	24A	Any elk	5
3107	Oct 5 - Nov 1, 2012	(14,34,35)	28, 31, and 32	Any elk	10
----	Oct 19 - Oct 25, 2012	(3,4,6,14,28,35)	Hopi Hunt (East Sunset, West Sunset, Meteor Crater, Twin Arrows, Two Guns, and Grapevine Hunt Areas in Units 5A and 5B North)	Antlerless elk	---
----	Oct 19 - Oct 25, 2012	(3,4,6,14,28,35)	Hopi Hunt (East Sunset, West Sunset, Meteor Crater, Twin Arrows, Two Guns, and Grapevine Hunt Areas in Units 5A and 5B North)	Any elk	---
Total					1782

C.H.A.M.P. ELK (Challenged Hunter Access/Mobility Permit required, see R12-4-217)

Open Areas do not include areas within municipal parks, municipal preserves, county parks, county preserves, airports, golf courses, or posted water treatment facilities (except as specifically opened in this Commission Order) or areas closed to hunting under A.R.S. Sections 17-303 and 17-304 or Commission Rules R12-4-301, R12-4-801, R12-4-802 and R12-4-803.

Hunt No.	Season Dates	Notes	Open Areas	Legal Wildlife	Permits
3108	Oct 19 - Oct 25, 2012	(18)	1	Any elk	10
3109	Nov 23 - Nov 29, 2012	(20,35)	6A	Any elk	25
3110	Nov 9 - Nov 15, 2012	(35)	10	Any elk	10
Total					45

MUZZLELOADER ELK

Open Areas do not include areas within municipal parks, municipal preserves, county parks, county preserves, airports, golf courses, or posted water treatment facilities (except as specifically opened in this Commission Order) or areas closed to hunting under A.R.S. Sections 17-303 and 17-304 or Commission Rules R12-4-301, R12-4-801, R12-4-802 and R12-4-803.

Hunt No.	Season Dates	Notes	Open Areas	Legal Wildlife	Permits
3111	Sep 28 - Oct 4, 2012	(18)	1, 2B, 2C	Bull elk	45
3112	Sep 28 - Oct 4, 2012		3B	Bull elk	25
3113	Nov 30 - Dec 6, 2012		3B	Bull elk	200
3114	Sep 28 - Oct 4, 2012	(20)	6A	Bull elk	50
3115	Nov 16 - Nov 22, 2012	(20)	6A	Bull elk	300
3116	Sep 28 - Oct 4, 2012	(35)	16A (except Mohave County Park Lands)	Bull elk	3
3117	Sep 28 - Oct 4, 2012	(16,35)	21	Bull elk	5
3118	Sep 28 - Oct 4, 2012	(11,35)	22 South	Bull elk	40
3119	Dec 14 - Dec 31, 2012		3B	Antlerless elk	250
3120	Nov 16 - Nov 22, 2012	(20)	6A	Antlerless elk	75
3121	Sep 28 - Oct 4, 2012	(20)	8	Antlerless elk	120
----	Oct 12 - Oct 18, 2012	(15)	Camp Navajo in Unit 6B	Antlerless elk	---
----	Oct 12 - Oct 18, 2012	(15)	Camp Navajo in Unit 6B	Any elk	---
Total					1113

ARCHERY-ONLY ELK

Open Areas do not include areas within municipal parks, municipal preserves, county parks, county preserves, airports, golf courses, or posted water treatment facilities (except as specifically opened in this Commission Order) or areas closed to hunting under A.R.S. Sections 17-303 and 17-304 or Commission Rules R12-4-301, R12-4-801, R12-4-802 and R12-4-803.

Hunt No.	Season Dates	Notes	Open Areas	Legal Wildlife	Permits
3122	Sep 14 - Sep 27, 2012		1, 2B, and 2C	Bull elk	245
3123	Sep 14 - Sep 27, 2012		3A and 3C	Bull elk	125

Elk Hunts

Elk: Commission Order 4 (continued)

ARCHERY-ONLY ELK

Open Areas do not include areas within municipal parks, municipal preserves, county parks, county preserves, airports, golf courses, or posted water treatment facilities (except as specifically opened in this Commission Order) or areas closed to hunting under A.R.S. Sections 17-303 and 17-304 or Commission Rules R12-4-301, R12-4-801, R12-4-802 and R12-4-803.

Hunt No.	Season Dates	Notes	Open Areas	Legal Wildlife	Permits
3124	Sep 14 - Sep 27, 2012		3B	Bull elk	75
3125	Sep 14 - Sep 27, 2012		4A	Bull elk	243
3126	Sep 14 - Sep 27, 2012		4B	Bull elk	150
3127	Sep 14 - Sep 27, 2012	(3,20)	5A	Bull elk	179
3128	Sep 14 - Sep 27, 2012	(3,5,20)	5B North	Bull elk	241
3129	Sep 14 - Sep 27, 2012	(7,20)	5B South	Bull elk	175
3130	Sep 14 - Sep 27, 2012	(20)	6A	Bull elk	650
3131	Sep 14 - Sep 27, 2012	(15,20)	6B (except Camp Navajo)	Bull elk	125
3132	Sep 14 - Sep 27, 2012	(8,20)	7 East	Bull elk	110
3133	Sep 14 - Sep 27, 2012	(9,20)	7 West	Bull elk	100
3134	Sep 14 - Sep 27, 2012	(20)	8	Bull elk	150
3135	Sep 14 - Sep 27, 2012	(20)	9	Bull elk	100
3136	Sep 14 - Sep 27, 2012		10	Bull elk	200
3137	Sep 14 - Sep 27, 2012	(20)	11M	Bull elk	80
3138	Sep 28 - Oct 11, 2012	(20)	11M	Bull elk	80
3139	Sep 14 - Sep 27, 2012		16A (except Mohave County Park Lands)	Bull elk	4
3140	Sep 14 - Sep 27, 2012		19A	Bull elk	15
3141	Sep 14 - Sep 27, 2012		21	Bull elk	10
3142	Sep 14 - Sep 27, 2012		22	Bull elk	25
3143	Sep 14 - Sep 27, 2012	(12)	23 North	Bull elk	15
3144	Sep 14 - Sep 27, 2012	(13)	23 South	Bull elk	15
3145	Sep 14 - Sep 27, 2012		27	Bull elk	150
3146	Nov 16 - Nov 29, 2012		1, 2B, and 2C	Bull elk	25
3147	Nov 16 - Nov 29, 2012		3A and 3C	Bull elk	25
3148	Nov 16 - Nov 29, 2012		3B	Bull elk	25
3149	Nov 16 - Nov 29, 2012		4A	Bull elk	24
3150	Nov 16 - Nov 29, 2012		4B	Bull elk	25
3151	Nov 16 - Nov 29, 2012	(3,20)	5A	Bull elk	24
3152	Nov 16 - Nov 29, 2012	(3,5,20)	5B North	Bull elk	24
3153	Nov 16 - Nov 29, 2012	(7,20)	5B South	Bull elk	25
3154	Nov 23 - Nov 29, 2012	(20)	6A	Bull elk	25
3155	Nov 16 - Nov 29, 2012	(15,20)	6B (except Camp Navajo)	Bull elk	25
3156	Nov 16 - Nov 29, 2012	(8,20)	7 East	Bull elk	25
3157	Nov 16 - Nov 29, 2012	(9,20)	7 West	Bull elk	25
3158	Nov 16 - Nov 29, 2012	(20)	8	Bull elk	25
3159	Nov 16 - Nov 29, 2012	(20)	9	Bull elk	25
3160	Nov 16 - Nov 29, 2012		10	Bull elk	30
3161	Nov 16 - Nov 29, 2012	(10)	22 North	Bull elk	275
3162	Nov 16 - Nov 29, 2012	(11)	22 South	Bull elk	30
3163	Nov 16 - Nov 29, 2012		23	Bull elk	200
3164	Nov 16 - Nov 29, 2012		27	Bull elk	25
3165	Sep 14 - Sep 27, 2012		1, 2B, and 2C	Antlerless elk	75
3166	Sep 14 - Sep 27, 2012		3A and 3C	Antlerless elk	50
3167	Sep 14 - Sep 27, 2012		3B	Antlerless elk	25
3168	Sep 14 - Sep 27, 2012		4A	Antlerless elk	78
3169	Sep 14 - Sep 27, 2012		4B	Antlerless elk	50
3170	Sep 14 - Sep 27, 2012	(3,20)	5A	Antlerless elk	39
3171	Sep 14 - Sep 27, 2012	(3,5,20)	5B North	Antlerless elk	24
3172	Sep 14 - Sep 27, 2012	(7,20)	5B South	Antlerless elk	50
3173	Sep 14 - Sep 27, 2012		6A	Antlerless elk	75
3174	Sep 14 - Sep 27, 2012	(15,20)	6B (except Camp Navajo)	Antlerless elk	50
3175	Sep 14 - Sep 27, 2012	(8,20)	7 East	Antlerless elk	50
3176	Sep 14 - Sep 27, 2012	(9,20)	7 West	Antlerless elk	50
3177	Sep 14 - Sep 27, 2012	(20)	8	Antlerless elk	50
3178	Sep 14 - Sep 27, 2012		10	Antlerless elk	75
3179	Sep 14 - Sep 27, 2012	(20)	11M	Antlerless elk	80
3180	Sep 28 - Oct 11, 2012	(20)	11M	Antlerless elk	80
3181	Nov 16 - Nov 29, 2012		22	Antlerless elk	70
3182	Nov 16 - Nov 29, 2012		23	Antlerless elk	25
3183	Sep 14 - Sep 27, 2012		27	Antlerless elk	50
----	Sep 14 - Sep 27, 2012	(28)	Hopi Hunt in Unit 4A	Bull elk	---
----	Sep 14 - Sep 27, 2012	(3,20,28)	Hopi Hunt in Unit 5A	Bull elk	---
----	Sep 14 - Sep 27, 2012	(3,5,20,28)	Hopi Hunt in Unit 5B North	Bull elk	---
----	Nov 16 - Nov 29, 2012	(28)	Hopi Hunt in Unit 4A	Bull elk	---

Elk Hunts

Elk: Commission Order 4 (continued)

ARCHERY-ONLY ELK

Open Areas do not include areas within municipal parks, municipal preserves, county parks, county preserves, airports, golf courses, or posted water treatment facilities (except as specifically opened in this Commission Order) or areas closed to hunting under A.R.S. Sections 17-303 and 17-304 or Commission Rules R12-4-301, R12-4-801, R12-4-802 and R12-4-803.

Hunt No.	Season Dates	Notes	Open Areas	Legal Wildlife	Permits
----	Nov 16 - Nov 29, 2012	(3,20,28)	Hopi Hunt in Unit 5A	Bull elk	---
----	Nov 16 - Nov 29, 2012	(3,5,20,28)	Hopi Hunt in Unit 5B North	Bull elk	---
----	Sep 14 - Sep 27, 2012	(28)	Hopi Hunt in Unit 4A	Antlerless elk	---
----	Sep 14 - Sep 27, 2012	(3,20,28)	Hopi Hunt in Unit 5A	Antlerless elk	---
----	Sep 14 - Sep 27, 2012	(3,5,20,28)	Hopi Hunt in Unit 5B North	Antlerless elk	---
----	Sep 14 - Sep 20, 2012	(15)	Camp Navajo in Unit 6B	Antlerless elk	---
----	Sep 21 - Sep 30, 2012	(15)	Camp Navajo in Unit 6B	Antlerless elk	---
----	Nov 9 - Nov 22, 2012	(15)	Camp Navajo in Unit 6B	Antlerless elk	---
----	Sep 14 - Sep 20, 2012	(15)	Camp Navajo in Unit 6B	Any elk	---
----	Sep 21 - Sep 30, 2012	(15)	Camp Navajo in Unit 6B	Any elk	---
----	Nov 9 - Nov 22, 2012	(15)	Camp Navajo in Unit 6B	Any elk	---
Total					5215

LIMITED OPPORTUNITY (ARCHERY-ONLY) ELK

Open Areas do not include areas within municipal parks, municipal preserves, county parks, county preserves, airports, golf courses, or posted water treatment facilities (except as specifically opened in this Commission Order) or areas closed to hunting under A.R.S. Sections 17-303 and 17-304 or Commission Rules R12-4-301, R12-4-801, R12-4-802 and R12-4-803.

Hunt No.	Season Dates	Notes	Open Areas	Legal Wildlife	Permits
3184	Sep 14 - Oct 4, 2012	(14)	15A, 15B, and 18A	Bull elk	25
3185	Sep 14 - Oct 4, 2012	(14)	17A, 17B, 18B, 19B, 20A, and 20C	Bull elk	35
3186	Sep 14 - Sep 23, 2012	(14,31)	Antelope Mountain Hunt Area in Unit 1	Antlerless elk	10
3187	Aug 3 - Aug 12, 2012	(14,32)	Coon Canyon Hunt Area in Unit 1	Antlerless elk	30
3188	Sep 7 - Sep 30, 2012	(14,32)	Coon Canyon Hunt Area in Unit 1	Antlerless elk	30
3189	Oct 5 - Oct 28, 2012	(14,32)	Coon Canyon Hunt Area in Unit 1	Antlerless elk	30
3190	Nov 2 - Nov 11, 2012	(14,32)	Coon Canyon Hunt Area in Unit 1	Antlerless elk	15
3191	Nov 16 - Nov 25, 2012	(14,32)	Coon Canyon Hunt Area in Unit 1	Antlerless elk	15
3192	Nov 30 - Dec 9, 2012	(14,32)	Coon Canyon Hunt Area in Unit 1	Antlerless elk	15
3193	Dec 14 - Dec 23, 2012	(14,32)	Coon Canyon Hunt Area in Unit 1	Antlerless elk	15
3194	Sep 14 - Sep 23, 2012	(14,33)	Flat Top Hunt Area in Unit 1	Antlerless elk	5
3195	Nov 9 - Nov 18, 2012	(14,33)	Flat Top Hunt Area in Unit 1	Antlerless elk	5
3196	Nov 23 - Dec 2, 2012	(14,33)	Flat Top Hunt Area in Unit 1	Antlerless elk	5
3197	Sep 14 - Oct 4, 2012	(14)	17A, 17B, 18B, 19B, 20A, and 20C	Antlerless elk	35
3198	Sep 14 - Sep 27, 2012	(14,34)	28, 31, and 32	Any elk	5
Total					275

GENERAL NONPERMIT TAG REQUIRED ELK

Open Areas do not include areas within municipal parks, municipal preserves, county parks, county preserves, airports, golf courses, or posted water treatment facilities (except as specifically opened in this Commission Order) or areas closed to hunting under A.R.S. Sections 17-303 and 17-304 or Commission Rules R12-4-301, R12-4-801, R12-4-802 and R12-4-803.

Season Dates	Notes	Open Areas	Legal Wildlife
Jan 1 - Mar 31, 2012	(22,23,24,25)	Winslow-Holbrook Hunt Area, Verde Valley Hunt Area, Alamo Lake Hunt Area, and Units 12A and 12B	Any elk
Apr 1 - Jul 31, 2012	(22,23,25)	Winslow-Holbrook Hunt Area and Verde Valley Hunt Area	Bull elk
Aug 1 - Sep 13, 2012	(22,25)	Verde Valley Hunt Area	Any elk
Aug 1 - Dec 31, 2012	(22,23)	Winslow-Holbrook Hunt Area and Units 12A and 12B	Any elk
Sep 21 - Oct 25, 2012	(22,24)	Alamo Lake Hunt Area	Any elk
Nov 23 - Dec 31, 2012	(22,27,34)	28 (excluding the Gila River corridor - see note), 31, and 32	Any elk
Dec 1 - Dec 31, 2012	(22,24,25)	Verde Valley Hunt Area and Alamo Lake Hunt Area	Any elk

ARCHERY-ONLY NONPERMIT TAG REQUIRED ELK

Open Areas do not include areas within municipal parks, municipal preserves, county parks, county preserves, airports, golf courses, or posted water treatment facilities (except as specifically opened in this Commission Order) or areas closed to hunting under A.R.S. Sections 17-303 and 17-304 or Commission Rules R12-4-301, R12-4-801, R12-4-802 and R12-4-803.

Season Dates	Notes	Open Areas	Legal Wildlife
Jan 1 - Mar 31, 2012	(22,26)	Rincon Basin Hunt Area	Any elk
Apr 1 - Jul 31, 2012	(22,26)	Rincon Basin Hunt Area	Bull elk
Aug 1 - Dec 31, 2012	(22,26)	Rincon Basin Hunt Area	Any elk

Elk Hunts

Elk Notes:

- Escudilla Hunt Area in Unit 1 - That portion of Unit 1 east and north of U.S. Hwy 180.
- 3A and 4B Dry Lake Hunt Unit - All of Unit 3A and that portion of Unit 4B beginning at AZ Hwy 377 and the Apache-Sitgreaves National Forest boundary (mile post 6.3); west and north along the forest boundary to Black Canyon; northwesterly along the bottom of Black Canyon to Hutch Ranch Road; Hutch Ranch Road easterly to AZ Hwy 377 (mp 15.2); southwesterly on AZ Hwy 377 to the Apache-Sitgreaves National Forest Boundary (mp 6.3).
- In the northern portion of Unit 5A, access is permitted on the Clear Creek Ranch by written permission only by contacting the Hopi Tribe Wildlife and Ecosystems Management Program via e-mail at hophihunts@hopi.nsn.us or by calling (928) 734-3606 or (928) 734-3605 from Monday-Friday 8am-5pm. Please contact in advance to gain access for hunting and scouting. In Unit 5B North access is permitted on the Hopi's Hart/Drye Ranch and in Unit 4A on the Hopi's Aja Ranch by signing in at designated sign-in boxes located at access points.
- East Sunset, West Sunset, and Meteor Crater Hunt Area in Units 5A and 5B North - That portion of Unit 5A beginning at the junction of the northern boundary of the Coconino National Forest and AZ Hwy 87 (mp 316.7 on Hwy 87); west, north and west along the Coconino National Forest boundary to FR 69 (Meteor Crater Road); northerly along the FR 69 approximately 10.8 miles to a dirt road (Wolfolk Well Rd.); westerly on the dirt road to Diablo Canyon; northerly along the bottom of Diablo Canyon to I-40; easterly on I-40 to Hipkoe Dr. in Winslow; south on Hipkoe Dr. to Business I-40 (3rd Street); east on Business I-40 (3rd Street) to AZ Hwy 87; south on AZ Hwy 87 to AZ Hwy 99; south on AZ Hwy 99 to East Clear Creek; southwesterly along the bottom of East Clear Creek to the Coconino National Forest boundary; north and west along the Coconino National Forest boundary to AZ Hwy 87.
- 5B North Hunt Unit - That portion of Unit 5B located north of the following roads: Beginning at the junction of FH 3 (Lake Mary/Clints Well Road) and FR 125; east on FR 125 to FR 82; south on FR 82 to FR 69B; east on FR 69B to FR 69.
- Twin Arrows, Two Guns, and Grapevine Hunt Combined Hunt Areas in Unit 5B North - That portion of 5B beginning at the junction of FR 69 and the rim of Anderson Mesa (at Chavez Pass); northwest along the rim of Anderson Mesa to FR 125; north along FR 125 to FR 126; northwest on FR 126 (Twin Arrows road) to I-40; east along I-40 to Diablo Canyon; south along the bottom of Diablo Canyon approximately 16 miles to the extended Wolfolk Well dirt road; east on the Wolfolk Well dirt road to the Meteor Crater road (approx. 11.5 miles south of I-40); south on the Meteor Crater road approximately 13 miles to the junction of FR 69 and the rim of Anderson Mesa (at Chavez Pass).
- 5B South Hunt Unit - That portion of Unit 5B located south of the following roads: Beginning at the junction of FH 3 (Lake Mary/Clints Well Road) and FR 125; east on FR 125 to FR 82; south on FR 82 to FR 69B; east on FR 69B to FR 69.
- 7 East Hunt Unit - That portion of Unit 7 located east of AZ Hwy 180.
- 7 West Hunt Unit - That portion of Unit 7 located west of AZ Hwy 180.
- 22 North Hunt Unit - That portion of Unit 22 located north of the following: Beginning at the confluence of the Verde River and the East Verde River; easterly along the East Verde River to FR 406; easterly on FR 406 to AZ Hwy 260 in Payson; easterly on AZ Hwy 260 to Tonto Creek (the Unit Boundary).
- 22 South Hunt Unit - That portion of Unit 22 located south of the following: Beginning at the confluence of the Verde River and the East Verde River; easterly along the east Verde River to FR 406; easterly on FR 406 to AZ Hwy 260 in Payson; easterly on AZ Hwy 260 to Tonto Creek (the Unit Boundary).
- 23 North Hunt Unit - That portion of Unit 23 located north of the following: Beginning at the junction of Tonto Creek and Spring Creek; east along Spring Creek to FR 134; east on FR 134 to FR 129; east on FR 129 to AZ Hwy 288; east on AZ Hwy 288 to FR 54; east on FR 54 to FR 202; south on FR 202 to FR 127; east on FR 127 to FR 127A; east on FR 127A to the White Mountain Apache Indian Reservation Boundary.
- 23 South Hunt Unit - That portion of Unit 23 located south of the following: Beginning at the junction of Tonto Creek and Spring Creek; east along Spring Creek to FR 134; east on FR 134 to FR 129; east on FR 129 to AZ Hwy 288; east on AZ Hwy 288 to FR 54; east on FR 54 to FR 202; south on FR 202 to FR 127; east on FR 127 to FR 127A; east on FR 127A to the White Mountain Apache Indian Reservation Boundary.
- Elk occur in low numbers in these non-traditional areas. Hunt success may be very low to no success.
- Camp Navajo in Unit 6B is open to elk hunting only to properly licensed hunters who meet the qualifications as "Authorized Participants" according to the installation hunting policies outlined on the Camp Navajo website. Applications for these hunts must be submitted to Arizona Game and Fish Department by the published deadline. Hunters must agree to the Camp Navajo hunting policies during the required registration at http://www.campnavajo.com/index.php?which_page=recreation. After registering, hunters will gain access to the hunt numbers required when submitting the application. All hunters are required to show proof of attendance to a hunter safety education course during paperwork submission for the Camp Navajo permit. Increases in Force Protection Conditions, training missions and industrial operations may result in partial or complete hunt cancellation at any time with little or no prior notification. In the event a hunt is cancelled, hunters drawn for these permits will not be reimbursed or otherwise compensated by the Arizona Game and Fish Department.
- The Grand Canyon-Parashant, Vermilion Cliffs, Sonoran Desert, Ironwood Forest, and Agua Fria National Monuments are open to hunting.
- Eligible disabled veterans must be rated at 50% or greater as determined by the Veterans Administration. Written proof is required prior to being allowed to hunt on Camp Navajo.
- Portions of Units 1 and 27 are closed to elk hunting during firearms seasons. Hunting is not permitted in the Alpine Valley in the following areas of Units 1 and 27: all lands in Section 12, Township 5 North, Range 30 East; all lands, other than USFS lands, in Sections 1, 2, 3, 10, 11, 13, and 14, Township 5 North, Range 30 East; and all lands, other than USFS lands, in Sections 7, 16, 17, 18, 19, and 20, Township 5 North, Range 31 East.
- 27 South Hunt Unit - That portion of Unit 27 located beginning at the San Carlos Indian Reservation Boundary; easterly on Forest Trail 309 to FR 54;

Elk Hunts

Elk Notes continued:

- easterly on FR 54 to U.S. Hwy 191; southeasterly on U.S. Hwy 191 to Forest Trail 35; southeasterly on Forest Trail 35 to Blue River; northerly on Blue River to Bear Canyon; northeasterly on Bear Canyon to Forest Trail 54; easterly on Forest Trail 54 to Forest Trail 43; easterly on Forest Trail 43 to the Arizona-New Mexico state line; southerly along the state line to the San Francisco River; westerly along the San Francisco River to U.S. Hwy 191; northerly on U.S. Hwy 191 to San Carlos-Morenci-Clifton Road; west on San Carlos-Morenci-Clifton Road to Eagle Creek; north along Eagle Creek to the San Carlos Indian Reservation Boundary; north along the San Carlos Indian Reservation Boundary to Forest Trail 309.
20. The U.S. Forest Service has expressed concern regarding road damage during wet weather. The Department is working with the U.S. Forest Service to provide limited access via designated core roads in units 5A, 5B, 6A, 6B, 7, 8, and 9 that will remain open during periods when other roads may be closed. When weather is deemed severe, the core roads may also be closed to prevent excessive road damage, provide for public safety, and protect natural resources. Roads that have been closed are closed to all users. Hunters should respect and obey road closures and drive responsibly during wet periods. It is recommended that hunters contact the appropriate Forest Service office to determine current road status for their hunt area (see the Index: Hunting on Public Lands).
21. Martinez Hunt Area in Unit 27 - That portion of Unit 27 beginning at the Arizona-New Mexico state line and AZ Hwy 78; southwest on AZ Hwy 78 to U.S. Hwy 191; north on U.S. Hwy 191 to the San Francisco River in Clifton; easterly along the San Francisco River to the Arizona-New Mexico state line; south along the New Mexico state line to AZ Hwy 78.
22. Over-the-counter nonpermit-tags for elk are available in some hunt areas. Elk numbers in these hunt areas are very low; therefore, hunt success is expected to be very low. Make sure you obtain permission to hunt on private lands. These hunts will not affect your Bonus Points but do count towards your one-elk-per-calendar-year bag limit. More information on these hunts can be found on the Department's Web site at www.azgfd.gov/ etc.
23. Winslow-Holbrook Hunt Area in Units 4A, and 4B - Beginning at the northwest corner of Unit 4A and the southwest corner of the Navajo Indian Reservation; south to I-40 at MP 221.4; east on I-40 to Hipkoe Drive (exit 252); south on Hipkoe Drive to Business I-40 (3rd Street); east on Business I-40 to AZ Hwy 87; south on AZ Hwy 87 to AZ Hwy 99; southeast on AZ Hwy 99 to Territorial Road; east on Territorial Road to intersection of Territorial Road and Obed Road (at this intersection Territorial Road becomes Mclaws Road); east on Mclaws Road to AZ Hwy 77; north on AZ Hwy 77 to I-40; east along I-40 to AZ Hwy 77 (exit 292); north on AZ Hwy 77 to the Navajo Indian Reservation boundary; west along the Navajo Indian Reservation boundary to the southwest corner of the Navajo Indian Reservation boundary.
24. Alamo Lake Hunt Area in Units 16A and 44A - That portion of Unit 16A south and east of the following: beginning at Bill Williams River and Planet Ranch Road, north on Planet Ranch Road to Yucca-Alamo Road, southeast on Yucca-Alamo Road to Chicken Springs Ranch Road, northeast on Chicken Springs Ranch Road to US Hwy 93; and that portion of Unit 44A north of Alamo-Highway 93 Road and west of AZ Hwy 93.
25. Verde Valley Hunt Area in Units 6A, 19A, and 21 - Beginning in that portion of Unit 6A at the junction of I-17 and FR 618 (Beaver Creek Road); southeasterly along FR 618 to AZ Hwy 260 (General Crook Trail); east along AZ Hwy 260 to FR 708 (Fossil Creek Road); east along FR 708 to FR 500; south along FR 500 to the Verde River to Chasm Creek; west along the bottom of Chasm Creek to FR 574 (Salt Mine Road) in the Prescott National Forest; northwesterly along FR 574 to Oasis Road; westerly along Oasis Road to AZ Hwy 260; west along AZ Hwy 260 to US Hwy 89A; north along US Hwy 89A to FR 119 (Cornville Road); east along FR 119 to FR 120 (Bearverhead Flat Road); north along FR 120 to AZ Hwy 179; easterly along AZ Hwy 179 to I-17.
26. Rincon Basin Hunt Area in Units 4A and 4B - Those portions of Units 4A and 4B beginning at the junction of I-40 and North Park Drive (exit 253); north along North Park Drive to McHood Road; east along McHood Road to the Little Colorado River; south along the Little Colorado River channel to I-40; west along I-40 to North Park Drive (exit 253).
27. Gila River Corridor in Unit 28 - That portion of Unit 28 within the following boundaries is closed to elk hunting: beginning at the San Carlos Reservation boundary and U.S. Hwy 70 east of Bylas; east along U.S. Hwy 70 to East Sanchez Road (in Solomon); north along East Sanchez Road to North Airport Road; west along North Airport Road to the Safford-Bryce-Eden Road; west along the Safford-Bryce-Eden Road through to the North River Road and on to the San Carlos Reservation boundary; and south along the San Carlos Reservation boundary to U.S. Hwy 70.
28. Hopi Trust lands in Units 4A, 5A, and 5B are open to both state and Hopi hunters under an agreement with the Hopi Tribe. A percentage of tags are set aside for Hopi Tribal member hunters. Hopi hunt numbers for these hunts must be obtained from the Hopi Tribe Wildlife and Ecosystems Management Program by calling (928) 734-3606 or (928) 734-3605. Non-Hopi Tribal members cannot apply for these hunts. Applications for these hunts must be submitted to the Arizona Game and Fish Department on the standard form by the published deadline. The Hopi Wildlife and Ecosystems Management program has requested that all Hopi Tribal elk hunters for these hunts provide a sample for Chronic Wasting Disease testing. Please call 928-734-3606/3605 if you have any questions. If all permits for these hunts are not issued through the draw, the left-over permits will be available to all hunters (tribal and non-tribal) through the first-come, first-serve process. Hunt numbers for left over permits will be available on the AZGF website.
29. Peaks Hunt Area in Unit 7 East - That portion of Unit 7 East beginning at the intersection of FR 552 and FR 420 (Schultz Pass Rd); southwest along FR 420 to the Transwestern Gas Pipeline; westerly along the Transwestern Gas Pipeline to U.S. Hwy 180; northerly along U.S. Hwy 180 to the northern intersection of the FR 151 loop (mile post 235.1); easterly along FR 151 to FR 418; Easterly along FR 418 to the intersection of FR 418 and FR 552; southeasterly along FR 552 to the intersection of FR 420. This hunt may have restricted vehicle access, be physically challenging, and have low hunt success.
30. Maverick Butte Hunt Area in Unit 7 East - That portion of Unit 7 East beginning at the intersection of U.S. Hwy 89 and FR 545; east on FR 545 to the Sunset Crater National Monument; easterly along the southern boundary of the Sunset Crater National Monument to FR 545; east on FR 545 to the 345 KV transmission lines 1 and 2;

Elk Hunts

Elk Notes continued:

- south-easterly along the power lines to to I-40 (mp 212 on I-40); east on I-40 to mp 221.4; north to the southwest corner of the Navajo Indian Reservation boundary; northerly and westerly along the reservation boundary to the Four Corners Gas Line; southwesterly along the Four Corners Gas Line to U.S. Hwy 180; southwesterly along U.S. Hwy 180 to FR 151; easterly along FR 151 to FR 418; easterly along FR 418 to FR 420; easterly along FR 420 to U.S. Hwy 89.
31. Antelope Mountain Hunt Area in Unit 1 - That portion of Unit 1 beginning at the junction of AZ Hwy 260 and FR 118; north on FR 118 to FR 8911; north on FR 8911 to State Trust Land; continuing north on dirt road through State Trust Land to U.S. Hwy 60 between mile post 374 and 375; east on AZ Hwy 60 to Main Street in Eagar; south on Main Street to U.S. Hwy 260; west on AZ Hwy 260 to FR 118. A map of the area will be mailed to successful draw applicants.
32. Coon Canyon Hunt Area in Unit 1 - That portion of Unit 1 beginning at the junction of AZ Hwy 260 and AZ Hwy 373; south on AZ Hwy 373 to Hall Creek; east on Hall Creek to the Lower Colorado River; east along the Lower Colorado River to Hobson Canyon; southeast along Hobson Canyon to FR 8070A (70A); east on FR 8070A (70A) to AZ Hwy 261; south on AZ Hwy 261 to FR 8070C (70C); east on FR 8070C (70C) to FR 285 (Water Canyon Road); north of FR 285 (Water Canyon Road) to School Bus Road in Eagar; east on School Bus Road to Main Street in Eagar; north on Main Street to AZ Hwy 260; west AZ Hwy 260 AZ Hwy 373. A map of the area will be mailed to successful draw applicants.
33. Flat Top Hunt Area in Unit 1 - That portion of Unit 1 beginning at the junction of Main Street in Springerville and U.S. Hwy 60; south on Main Street to School Bus Road in Eagar; west on School Bus Road to FR 285 (Water Canyon Road) in Eagar; south on FR 285 (Water Canyon Road) to FR 74/76; east on FR 74/76 to Forest Trail 607 (Saffel Canyon Trail); east on Forest Trail 607 to U.S. Hwy 191; southeast on U.S. Hwy 191 to Nutrioso Creek; north along Nutrioso Creek to U.S. Hwy 60; west on U.S. Hwy 60 to Main Street in Springerville. A map of the area will be mailed to successful draw applicants.
34. The following Pima County parks and preserves are open to hunting: A-7 Ranch in Units 32 and 33. Hunting in County Parks, opened by this Commission Order, is not permitted within ¼ mile of any developed picnic area, developed camp ground, shooting range, occupied building, boat ramp, or golf course. Developed areas do not include trails.
35. Areas of private property within municipal boundaries in this hunt area are closed to elk hunting during this hunt.

**Return Your Hunter Questionnaire –
Your Tag Depends on It!**
Submit your response online or by mail.
www.azgfd.gov/huntersurvey

Hunters can Help Monitor Arizona Elk Health – Submit Elk Heads for CWD Testing

Bring the head of your recently harvested elk (or deer) to any Game and Fish department office between 8 a.m. and 5 p.m., Monday through Friday (office addresses are listed on page X). Department personnel will collect a tissue sample for Chronic Wasting Disease testing. Hunters that are successful in Units 1, 2, 3, 27, and 28 are especially encouraged to submit heads because these units are close to New Mexico, a state with infected deer and elk.

It is best if the head has been kept cool and is submitted within a day of harvest. The head may be placed in a garbage bag for delivery. You will be asked to provide information on approximately where the animal was harvested (gmu) and where you can be reached (phone number) in case the test is positive. No CWD has been detected in Arizona's deer or elk to date.

CWD results can be found here:
<http://azgfdeservices.com/cwdlogin.aspx>

Keep CWD out of AZ

To protect Arizona's deer and elk herds from Chronic Wasting Disease (CWD), hunters are encouraged to take these voluntary

precautions when hunting deer or elk out-of-state, including:

- Don't bring the brain, intact skull, or spinal column into Arizona.

The following elk or deer parts harvested out-of-state are okay to bring back into Arizona:

- Boneless portions of meat, or meat that has been cut and packaged without any portion of the spinal column;
- Clean hides and capes with no skull or soft tissue attached;
- Antlers, clean skull plates, or skulls with antlers attached with no meat or soft tissue remaining;
- Finished taxidermy mounts or products; and
- Upper canine teeth (buglers, whistlers, ivories) with no meat or tissue attached.

CWD is present in the neighboring states of Utah, Colorado, and New Mexico, as well as many other popular hunting destinations for deer and elk. Some states have strict regulations governing carcass movement, so we encourage you to contact the wildlife agency where you travel for any applicable regulations.

Hunt Success for 2011 seasons was not available at the time of printing. Hunt Success data will be included in the Hunt Arizona book, which is available for free online each May. Draw Odds = your chance of getting your first choice.

2011 Drawing Odds & Success Rate						
Unit	Hunt Type	Date	Permits Authorized	1 st & 2 nd Choice	Draw Odds	Hunt Success
ELK						
General						
1 (ES)	Antlerless	12/9-12/15	75	119	78	***
1 (CHAMP)	AE	10/14-10/20	10	154	8	***
1 (FT)	Antlerless	8/5-8/8	5	6	100	***
1 (FT)	Antlerless	8/12-8/15	5	0	***	***
1 (FT)	Antlerless	8/19-8/22	5	1	***	***
1 (FT)	Antlerless	8/26-9/4	5	0	***	***
1 (FT)	Antlerless	9/23-10/2	5	0	***	***
1 (FT)	Antlerless	10/7-10/16	5	1	***	***
1 (FT)	Antlerless	10/21-10/30	5	0	***	***
1 (FT)	Antlerless	11/4-11/10	5	0	***	***
1 (FT)	Antlerless	11/25-12/4	5	0	***	***
1 (FT)	Antlerless	12/9-12/18	5	0	***	***
1 (FT)	Antlerless	12/23-12/31	5	0	***	***
1 (AM)	Antlerless	8/5-8/8	10	12	67	***
1 (AM)	Antlerless	8/12-8/15	10	2	***	***
1 (AM)	Antlerless	8/19-8/22	10	0	***	***
1 (AM)	Antlerless	8/26-9/4	10	1	***	***
1 (AM)	Antlerless	9/23-10/2	10	6	100	***
1 (AM)	Antlerless	10/7-10/16	10	1	***	***
1 (AM)	Antlerless	10/21-10/30	10	0	***	***
1 (AM)	Antlerless	11/4-11/10	10	1	***	***
1 (AM)	Antlerless	11/25-12/4	10	2	***	***
1 (AM)	Antlerless	12/9-12/18	10	0	***	***
1 (AM)	Antlerless	12/23-12/31	10	2	100	***
1/2B/2C	Bull	9/23-9/29	45	6924	1	***
1/2B/2C	Bull	11/25-12/1	425	4064	11	***
1/2B/2C	Antlerless	12/2-12/8	360	1587	28	***
1/2B/2C	Antlerless	12/9-12/15	300	777	62	***
1/2C (Jr.)	Antlerless	10/7-10/13	175	1245	19	***
2A/2B	Antlerless	9/9-9/18	40	15	100	***
2A/2B	Antlerless	9/30-10/9	40	8	100	***
2A/2B	AE	9/9-9/18	20	159	15	***
2A/2B	AE	9/30-10/9	20	165	20	***
2A/2B	AE	10/14-10/23	15	53	36	***
2A/2B	AE	12/2-12/11	15	30	56	***
2A/2B	Antlerless	12/2-12/11	30	5	100	***
2A/2B	Antlerless	10/14-10/23	30	5	100	***
3A/3C	Bull	9/23-9/29	40	3705	1	***
3A/3C	Bull	11/25-12/1	425	1765	30	***
3A/3C (Jr.)	Antlerless	10/14-10/20	300	1511	33	***
3A/3C East	Antlerless	10/21-10/27	200	1347	20	***
3A/4B North	AE	8/5-8/14	15	65	19	***
3A/4B North(DL)	Antlerless	8/5-8/14	60	21	100	***
3C West	Antlerless	10/21-10/27	150	823	28	***
4A	Bull	11/25-12/1	390	1313	36	***
4A (Hopi)	Bull	11/25-12/1	10	6	100	***
4A	Antlerless	10/14-10/20	97	665	24	***
4A (Jr.)	Antlerless	10/7-10/13	97	863	29	***
4A (Jr.) (Hopi)	Antlerless	10/7-10/13	6	10	86	***
4B	Antlerless	10/14-10/20	50	309	25	***
4B	Bull	11/25-12/1	300	826	47	***
4B	Bull	9/23-9/29	50	1626	3	***
5A	Bull	11/25-12/1	339	1415	31	***
5A (Hopi)	Bull	11/25-12/1	11	15	100	***
5A	Antlerless	10/14-10/20	121	1055	16	***
5A (Hopi)	Antlerless	10/14-10/20	4	5	100	***
5A/5B North (ST)	Antlerless	10/14-10/20	37	49	75	***
5A/5B North (ST) (Hopi)	Antlerless	10/14-10/20	38	15	100	***

2011 Drawing Odds & Success Rate						
Unit	Hunt Type	Date	Permits Authorized	1 st & 2 nd Choice	Draw Odds	Hunt Success
ELK						
General						
5A/5B North (ST)	AE	10/14-10/20	25	197	13	***
5A/5B North (ST) (Hopi)	AE	10/14-10/20	25	30	83	***
5B	Bull	11/25-12/1	831	5960	22	***
5B (Hopi)	Bull	11/25-12/1	19	31	92	***
5B North	Antlerless	10/14-10/20	241	1422	22	***
5B North (Hopi)	Antlerless	10/14-10/20	9	18	67	***
5B North	Bull	9/23-9/29	24	1997	1	***
5B North (Hopi)	Bull	9/23-9/29	1	12	9	***
5B South	Antlerless	10/14-10/20	450	4447	17	***
6A	Bull	10/21-10/24	125	4916	3	***
6A (CHAMP)	AE	11/18-11/24	25	138	18	***
6A (Jr.)	Antlerless	10/7-10/13	500	2686	23	***
6A	Bull	11/25-12/1	900	7810	16	***
6A	Antlerless	10/14-10/20	450	5158	15	***
6B	Bull	11/25-12/1	190	739	34	***
6B	Bull	9/23-9/29	25	868	3	***
6B	Antlerless	12/2-12/11	200	485	53	***
7 East (P)	Antlerless	10/14-10/20	90	54	100	***
7 East (P)	Antlerless	9/23-9/29	90	118	96	***
7 East	Antlerless	12/2-12/11	200	337	85	***
7 East	Antlerless	10/14-10/20	40	137	55	***
7 East	Antlerless	9/23-9/29	40	149	27	***
7 East	Bull	11/25-12/1	425	1309	38	***
7 West	Antlerless	10/14-10/20	400	2045	27	***
7 West	Antlerless	12/2-12/8	260	570	68	***
7 West	Bull	11/25-12/1	325	1821	26	***
8	Antlerless	12/2-12/8	375	943	56	***
8	Bull	11/25-12/1	600	2522	32	***
8	Bull	10/21-10/24	75	1789	5	***
9	Antlerless	12/2-12/8	250	562	62	***
9	Antlerless	10/14-10/20	250	1033	32	***
9	Bull	11/25-12/1	275	1367	22	***
10	Antlerless	10/14-10/20	900	1915	57	***
10	Antlerless	12/2-12/11	700	998	95	***
10	Bull	9/23-9/29	50	5044	1	***
10	Bull	11/25-12/1	500	2289	28	***
15A/15B/18A	Bull	9/30-10/13	25	236	16	***
15A/15B/18A	Bull	11/4-11/8	200	64	93	***
15A/15B/18A	Bull	11/4-11/8	150	232	64	***
17/18B/19B/20AC	Bull	9/30-10/13	35	254	15	***
17/18B/19B/20AC	Antlerless	9/30-10/13	150	54	100	***
17/18B/19B/20AC	Antlerless	11/4-11/8	250	69	100	***
17/18B/19B/20AC	AE	11/4-11/8	150	301	56	***
19A	Antlerless	10/14-10/20	40	49	94	***
19A	Bull	11/25-12/1	40	112	37	***
19A	Antlerless	12/2-12/11	30	30	100	***
21	Bull	11/25-12/1	15	116	15	***
22 (Jr.)	Antlerless	11/4-11/10	30	303	27	***
22 North	Bull	11/25-12/1	450	1555	35	***
22 North	Bull	12/2-12/8	100	593	31	***
22 North	Antlerless	10/14-10/20	175	800	31	***

2011 Drawing Odds & Success Rate

Unit	Hunt Type	Date	Permits Authorized	1 st & 2 nd Choice	Draw Odds	Hunt Success
ELK						
General						
22 North	Bull	9/23-9/29	30	1303	2	***
22 South	Bull	11/25-12/1	30	226	20	***
22 South	Antlerless	10/14-10/20	25	135	32	***
23	Bull	11/25-12/1	250	1427	17	***
23	Antlerless	12/2-12/8	175	333	65	***
23 (Jr.)	Antlerless	11/4-11/10	30	233	25	***
23 North	Bull	9/23-9/29	20	1616	1	***
23 North	Antlerless	10/14-10/20	25	190	18	***
23 South	Antlerless	10/14-10/20	25	56	39	***
24A	AE	10/14-10/20	5	35	20	***
24A	AE	9/23-9/29	5	63	8	***
27	Bull	11/25-12/1	400	2154	23	***
27 (M)	Antlerless	8/12-8/18	25	6	100	***
27	Antlerless	10/14-10/20	305	1109	33	***
27 South	Antlerless	8/12-8/18	50	20	100	***
28/31/32	AE	9/30-10/27	10	35	27	***
Muzzleloader						
3B	Antlerless	12/9-12/31	250	332	81	***
3B	Bull	9/23-9/29	25	666	3	***
3B	Bull	11/25-12/1	200	482	49	***
6A	Antlerless	11/11-11/17	100	498	25	***
6A	Bull	11/11-11/17	300	2014	19	***
8	Bull	9/23-9/29	25	1076	4	***
8	Antlerless	9/23-9/29	125	501	26	***
9	Bull	9/23-9/29	25	1776	2	***
16A	Bull	9/23-9/29	3	46	8	***
21	Bull	9/23-9/29	5	110	6	***
22 South	Bull	9/23-9/29	40	370	11	***
27	Bull	9/23-9/29	25	956	3	***
Archery						
1 (AM)	Antlerless	9/9-9/18	10	3	***	***
1 (AM)	Antlerless	11/11-11/20	10	0	***	***
1 (CC)	Antlerless	8/5-8/8	10	0	***	***
1 (CC)	Antlerless	8/12-8/15	10	0	***	***
1 (CC)	Antlerless	8/19-8/22	10	0	***	***
1 (CC)	Antlerless	8/26-9/4	10	2	***	***
1 (CC)	Antlerless	9/9-9/18	10	0	***	***
1 (CC)	Antlerless	9/23-10/2	10	0	***	***
1 (CC)	Antlerless	10/7-10/16	10	1	100	***
1 (CC)	Antlerless	10/21-10/30	10	0	***	***
1 (CC)	Antlerless	11/4-11/10	10	0	***	***
1 (CC)	Antlerless	11/11-11/20	10	0	***	***
1 (CC)	Antlerless	11/25-12/4	10	0	***	***
1 (CC)	Antlerless	12/9-12/18	10	0	***	***
1 (CC)	Antlerless	12/23-12/31	10	0	***	***
1 (FT)	Antlerless	9/9-9/18	5	0	***	***
1/2B/2C	Antlerless	9/9-9/22	100	282	30	***
1/2B/2C	Bull	9/9-9/22	245	4177	7	***
1/2B/2C	Bull	11/11-11/24	25	78	31	***
3A/3C	Antlerless	9/9-9/22	50	115	63	***
3A/3C	Bull	9/9-9/22	125	1796	9	***
3A/3C	Bull	11/11-11/24	25	55	58	***
3B	Antlerless	9/9-9/22	25	56	88	***
3B	Bull	9/9-9/22	75	535	13	***
3B	Bull	11/11-11/24	25	29	100	***
4A	Antlerless	9/9-9/22	78	266	39	***
4A (Hopi)	Antlerless	9/9-9/22	2	2	100	***
4A	Bull	9/9-9/22	218	1727	16	***
4A (Hopi)	Bull	9/9-9/22	4	4	100	***
4A	Bull	11/11-11/24	24	62	48	***
4A (Hopi)	Bull	11/11-11/24	1	0	***	***
4B	Bull	11/11-11/24	25	33	100	***
4B	Bull	9/9-9/22	150	807	23	***
4B	Antlerless	9/9-9/22	50	83	56	***
5A	Bull	9/9-9/22	204	1665	18	***
5A (Hopi)	Bull	9/9-9/22	6	5	100	***
5A	Bull	11/11-11/24	24	60	45	***
5A (Hopi)	Bull	11/11-11/24	1	0	***	***
5A	Antlerless	9/9-9/22	39	177	30	***
5A (Hopi)	Antlerless	9/9-9/22	1	1	***	***

2011 Drawing Odds & Success Rate

Unit	Hunt Type	Date	Permits Authorized	1 st & 2 nd Choice	Draw Odds	Hunt Success
ELK						
Archery						
5B North	Bull	9/9-9/22	241	1701	19	***
5B North (Hopi)	Bull	9/9-9/22	9	15	33	***
5B North	Bull	11/11-11/24	24	43	69	***
5B North (Hopi)	Bull	11/11-11/24	1	0	***	***
5B North	Antlerless	9/9-9/22	72	193	51	***
5B North (Hopi)	Antlerless	9/9-9/22	3	0	***	***
5B South	Bull	9/9-9/22	175	2248	12	***
5B South	Bull	11/11-11/24	25	55	59	***
5B South	Antlerless	9/9-9/22	75	300	32	***
6A	Antlerless	9/9-9/22	125	731	20	***
6A	Bull	9/9-9/22	595	4566	16	***
6A	Bull	11/11-11/24	25	59	41	***
6B	Antlerless	9/9-9/22	50	106	67	***
6B	Bull	9/9-9/22	100	515	23	***
6B	Bull	11/11-11/24	25	13	57	***
7 East	Bull	9/9-9/22	110	636	19	***
7 East	Antlerless	9/9-9/22	50	106	63	***
7 East	Bull	11/11-11/24	25	24	67	***
7 West	Antlerless	9/9-9/22	50	119	55	***
7 West	Bull	9/9-9/22	125	1432	12	***
7 West	Bull	11/11-11/24	25	46	64	***
8	Bull	11/11-11/24	25	51	72	***
8	Bull	9/9-9/22	200	1623	16	***
8	Antlerless	9/9-9/22	50	104	54	***
9	Bull	9/9-9/22	100	3099	4	***
9	Bull	11/11-11/24	25	82	33	***
10	Antlerless	9/9-9/22	75	73	100	***
10	Bull	9/9-9/22	150	2781	6	***
10	Bull	11/11-11/24	25	76	25	***
11M	Antlerless	9/9-9/22	80	191	51	***
11M	Antlerless	9/23-10/6	80	137	88	***
11M	Bull	9/9-9/22	80	516	25	***
11M	Bull	9/23-10/6	80	488	21	***
15A/15B/18A	Bull	9/9-9/29	25	137	23	***
16A	Bull	9/9-9/22	4	12	60	***
17/18B/19B/20AC	Bull	9/9-9/29	35	149	31	***
17/18B/19B/20AC	Antlerless	9/9-9/29	75	6	100	***
19A	Bull	9/9-9/22	20	48	43	***
22	Bull	9/9-9/22	25	352	11	***
22	Antlerless	11/11-11/24	70	113	93	***
22 North	Bull	11/11-11/24	275	281	99	***
22 South	Bull	11/11-11/24	30	49	88	***
23	Antlerless	11/11-11/24	50	56	100	***
23	Bull	11/11-11/24	200	219	92	***
23 North	Bull	9/9-9/22	15	456	5	***
23 South	Bull	9/9-9/22	15	230	6	***
27	Bull	9/9-9/22	150	1797	13	***
27	Bull	11/11-11/24	25	49	56	***
27	Antlerless	9/9-9/22	50	104	76	***
28/31/32	AE	9/9-9/22	5	9	60	***

Jr. = Juniors only, CH = CHAMP hunt

Elk Herd-Units: AM = Antelope Mountain, CC = Coon Canyon, DL = Dry Lake, ES = Escudilla, FT = Flat Top, P = Peaks, M = Martinez, ST = East Sunset/West Sunset/Meteor Crater/Twin Arrows/Two Guns/Grapevine.

Condor Country: Why Non-lead Ammunition?

Hunters are helping

For the past five years, 80 to 90 percent of fall hunters have participated in the Department's voluntary lead reduction program by using non-lead ammunition or removing gut piles from the field in the condor's core range.

The hunting community should be proud of this accomplishment, but we still need more hunters to help. Please help us prove to our critics that we can solve this problem on our own and that mandatory measures are not needed.

Hunters who use non-lead ammunition in condor range carry on sportsmen's proud tradition of wildlife conservation. If you choose to use lead ammunition, you can still help by removing your entire game carcass (including small game and varmints) and gut pile from the field. Local landfills accept and bury animal remains.

Hunters praise non-lead bullets

Copper bullets have superior penetration, are less toxic, and do not fragment like lead. 93 percent of hunters say that non-lead bullets perform as well as or better than lead bullets on game. Non-lead shot and frangible bullets also are available for varmint and small game hunting.



The Arizona Game and Fish Department and our partners ask you to be part of the solution by using non-lead ammunition when hunting in condor country (Game Management Units 9, 10, 12A, 12B, 13A, and 13B).

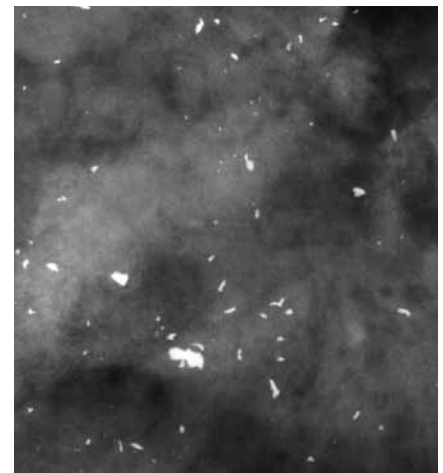
These sportsmen's groups ask you to use non-lead ammunition in condor range:

- Arizona Deer Association
- Arizona Elk Society
- Arizona Antelope Foundation
- Arizona Desert Bighorn Sheep Society
- Arizona Chapter of the National Wild Turkey Federation

Hunters drawn for hunts in condor range will be mailed more information before their hunt.

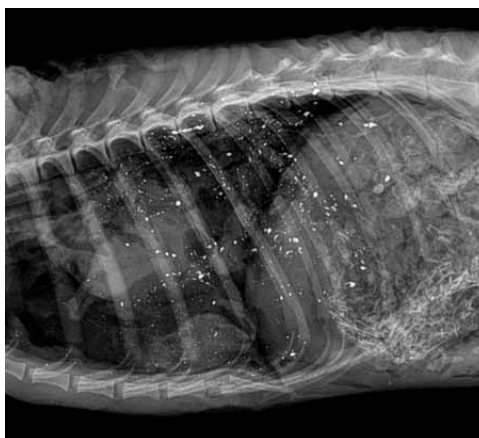


Lead poisoning is the leading cause of death in condors and the main obstacle to a self-sustaining condor population in Arizona and Utah. At least 19 condors have died from lead poisoning – including six within the last two years. They were found with lead shot and bullet fragments in their digestive tracts. More than 450 cases of lead exposure have been documented since 1999.



Lead bullet fragments remain in game carcasses and gut piles left in the field by hunters. These X-rays show hundreds of lead fragments (fragments appear bright white in X-ray) in a deer carcass and gut pile. Condors are group feeders, so several birds can ingest fragments from one carcass or gut pile containing lead.

Studies have concluded that lead shot and bullet fragments found in game carcasses and gut piles are the main source of lead in condors. To learn more about the condor program and for a complete list of non-lead ammunition available, visit: www.azgfd.gov/condor.



Lead varmint and small game ammunition also fragments significantly. This x-ray of a coyote illustrates the amount of lead (bright white fragments) left in the carcass. Each spring condor lead exposures increase as they forage on animal remains left in the field by hunters. Hunters can help by either using non-lead ammunition OR removing ALL varmint and small game carcasses from the field.

ATTENTION SPORTSMEN: Wolves, Jaguars and Ocelots may be Encountered in Arizona

It is your responsibility to identify your target.

Sportsmen may encounter wolves, jaguars or ocelots while engaged in outdoor activities. All three species are listed as endangered in the United States under the Endangered Species Act (Act), and Take, which under federal law means "to harass, harm, pursue, hunt, shoot, wound, kill, trap, capture, or collect, or to attempt to engage in any such conduct" is generally unlawful and may subject you to federal and state prosecution. Criminal penalties may include imprisonment of not more than one year and a fine of up to \$50,000 and/or a civil penalty of up to \$25,000. You are responsible for identifying your target before shooting.

Once hunters are aware that they or their dogs are in pursuit of a jaguar or ocelot, they should stop the pursuit immediately. Dogs, if present, should be called off immediately. Sportsmen should let the animal leave the area and take all necessary steps to not intentionally harass or pursue the animal. Wolves, jaguars and ocelots that have been trapped and cannot be safely released should be reported to the Arizona Game and Fish Department immediately.

Jaguar tracks are similar to mountain lion tracks. The front feet of jaguars

are larger than the hind feet (both pads and toes). Typically, jaguar tracks have rounder toes and shorter pad height than mountain lions. Overall, jaguar tracks tend to be wider than those of mountain lions (measuring up to six inches). There is overlap in size between the two species however and their tracks are often difficult to distinguish. Scats are also similar.

The Department asks sportsmen to contact its 24-hour dispatch at (623) 236-7573 **immediately** if a jaguar or ocelot encounter is believed to represent a threat to either the animal or public safety. All other sightings should be reported at the same number as soon as possible, providing location and a description of any physical evidence that may be available. You also may send sighting information (location, physical description and photographs) to rarewlsightings@azgfd.gov.

The Arizona Houndsmen have offered a reward of up to \$5,000 to any individual who provides information leading to the arrest and conviction of any person who intentionally kills a jaguar. If you believe that you have witnessed a violation, please notify Arizona Game and Fish Department (Operation Game Thief) at 1 (800) 352-0700.



OCELOT

JAGUAR

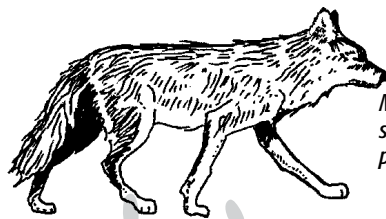
BOBCAT

MOUNTAIN LION

Know the Difference

Coyote (*Canis latrans*)

Ears are prominent, pointed, relatively long.



Muzzle is slender and pointed.

1-2 feet tall; 4 feet long with tail;
Front paw, 2.5 inches long x 2 inches wide

- Nose is more pointed
- Usually displays skittish behavior, tends to flee immediately
- Legs and feet are smaller, more delicate
- Weighs 20 - 35 pounds
- Fur color is very similar to wolves:
 - Grizzled gray, rust or buff
 - Rarely white or black

Mexican Wolf (*Canis lupus baileyi*)

Ears are more rounded, relatively short.



Muzzle is large and blocky.

2-3 feet tall; 5 feet long with tail;
Front paw, 4.5 inches long x 3.5 inches wide

- Nose is broad
- Sometimes displays curious behavior and may not flee as quickly
- Legs are longer, more lanky; feet are larger
- Weighs 50 - 80 pounds
- Fur color is very similar to coyotes:
 - Grizzled gray, black, rust or buff
 - Not all white or all black
- Not all wolves have radio collars

ATTENTION SPORTSMEN: Wolves, Jaguars and Ocelots may be Encountered in Arizona

Mexican Wolves in Arizona

During the past several years, many wolves have been illegally shot in Arizona and New Mexico, causing significant setbacks to the Blue Range reintroduction project. It is possible that some of these shootings were cases of mistaken identity, where the shooter believed the target was a coyote. It can be difficult to distinguish wolves from coyotes, especially when the sighting is brief, the animal is far away, if it's a juvenile wolf, or a wolf in its summer coat. Coyote hunters should exercise extra caution from July to November because wolf pups are active, and their appearance and behavior make them appear like coyotes. You are responsible for identifying your target before shooting.

If you are hunting in or near Unit 1 or 27, or near the United States/Mexico border east of Nogales, please be aware that Mexican wolves may be present. Mexican wolves are protected under the Endangered Species Act (Act). Take, which means "to harass, harm, pursue, hunt, shoot, wound, kill, trap, capture, or collect, or to attempt to engage in any such conduct," is generally unlawful, and may subject you to federal and state prosecution. Criminal penalties may include imprisonment of not more than one year and a fine of up to \$50,000 and/or a civil penalty of up to \$25,000.

Helping wolves, humans coexist

The gray wolf (*Canis lupus*) is classified as an endangered species in Arizona and New Mexico except between Interstate Highway 10 and Interstate Highway 40. Between these two highways, the wolf is classified as a non-essential, experimental population under section 10(j) of the Act (see map).

With rare exceptions, you may only kill a wolf in defense of human life but you must report it to the U.S. Fish and Wildlife Service within 24 hours.



MEXICAN GRAY WOLF BY GEORGE ANDREIKO/AGFD



COYOTE BY GEORGE ANDREIKO/AGFD

Ways to avoid wolf conflicts

Wolves normally avoid human contact. Like all wildlife, they can be curious and could become habituated to humans. This is especially true if people at campgrounds feed wolves (or leave dog food out at night).

If a wolf should approach you, raise your arms and look as big as possible. Yell or throw rocks to scare it away. Back away slowly – never run.

Some other tips

- Keep a clean camp.
- Prepare and store food and wash dishes away from sleeping areas.
- Properly store garbage in camp and dispose of trash in predator-proof receptacle.
- Keep pets close to you. Do not leave them unattended or allow to run free.
- Never feed wildlife – including wolves.

To report wolf sightings, possible livestock depredations, or harassment of wolves call:

Mexican Wolf Interagency Field Team – (888) 459-9653
Operation Game Thief hotline – (800) 352-0700
White Mountain Apache Tribe – (928) 338-1023

Non-essential Experimental Population Area



■ Mexican Wolf Non-essential Experimental Population Area

Supplemental (Population Management) Hunts and Hunter Pool

Beginning in 2003-2004, the Arizona Game and Fish Department established Population Management Hunts and the Hunter Pool. AZGFD Wildlife Managers have found that previous hunt strategies designed to manage some wildlife populations are not meeting objectives. When regular hunt seasons don't meet management objectives, conflicts between wildlife and other uses of the land can occur. Population management hunts are designed to allow the Department to achieve supplemental harvests of wildlife when traditional harvest strategies have not met their objectives. Population management hunts will enhance the Department's ability to meet population and habitat management objectives.

The following information is important to know if you are planning on applying for a population management hunt.

- Population management hunts may occur as necessary, under the provisions of R12-4-115 (refer to the current Hunting and Trapping Regulations).
- The Population Management Seasons Commission Order 26 approved by the Commission designates the range of species, season dates, open areas, legal wildlife, lawful taking methods, and maximum tag numbers for population management hunts to be prescribed by the Director and implemented under R12-4-115.
- When a population management hunt is found to be necessary, as prescribed in R12-4-115, hunters will be selected from the hunter pool made up of hunter pool applicants (see application below).

- The hunter pool list will be purged by the Department Dec. 31, 2012. You may apply at any time during the year (note: do not include the hunter pool hunt application form with a hunt permit-tag application—you must apply separately. See application below for instructions).
- To complete your application, you must designate the species of animal(s) you desire to hunt and the weapon type(s). You must also submit a \$7.50 application fee (note: one \$7.50 application fee per application—not per species). Please do not send cash.
- You may designate more than one species and weapon type on the application form. If you choose to designate more than one species and weapon type on your hunter pool application, your name will be included in the hunter pool for each species and weapon type you designate. This means that you may be eligible to participate in a population management hunt for more than one species or method of take each year (note: annual bag limits apply to all population management hunts and may limit your ability to participate in a population management hunt or regular season hunt).
- If you participate in a population management hunt and fill your annual bag limit for that species, you may not participate in a regular hunting season for that species even if you are drawn through the normal draw process (note: A.R.S. 17-332.E. prohibits the issuing of a refund for the purchase of a license or a permit).

- If your application is selected during a random drawing for a population management hunt, the Department will attempt to contact you three times by telephone within a 24-hour period. If you cannot be contacted within 24 hours, your application will be returned to the hunter pool for inclusion in future population management hunts during that year.
- If you are offered a restricted non-permit tag for a population management hunt, pursuant to R12-4-115, you may decline to participate. If you decline to participate, your application will be returned to the hunter pool for inclusion in future population management hunts during that year (note: if you agree to participate in a population management hunt but fail to purchase your tag within the timeframe designated when you are contacted, you will not be eligible for further population management hunts that year).
- If you elect to participate in a population management hunt, it is probable that you will be asked to arrive in the field to hunt within a few days of being contacted (note: purchase of restricted nonpermit-tag and applicable hunting license prior to hunting is required).
- Restricted non-permit tags issued through the hunter pool may be purchased through the Department's Phoenix office. See the front of the hunting regulations booklet for the address and phone number.
- You will not gain or lose bonus points when you apply for, or participate in, a population management hunt.

Form may be photocopied.

**Do not include this form with a Hunt Permit-tag Application Form
(See R12-4-115 in the current hunting and trapping regulation booklet)**

Have you:

- Filled in all the blanks?
- Enclosed the \$7.50 application fee?
- Signed your application?
- Indicated your choice of species?

Mail Application and Fee (do not send cash) to:

Arizona Game and Fish Department
Attention: Drawer FAB
5000 W. Carefree Highway
Phoenix, AZ 85086

HUNTER POOL APPLICATION

For Jan. 1, 2012 thru Dec. 31, 2012

--	--	--	--	--	--	--	--	--	--

Please provide your hunting license number.
(2 character license prefix required)

Last Name _____ First Name _____ MI _____

Street _____

City _____ State _____ Zip Code _____

Day Phone No. () _____ - _____ Evening Phone No. () _____ - _____

Choose 1 to 5 Species: Elk Bear Javelina Buffalo Deer

Choose 1 to 3 Method of Take: Rifle Ham (Handgun, Archery, Muzzleloader) Archery

Birthdate ____/____/____ Resident Non-resident

Please provide your Department ID Number. If you do not have a Department ID Number, one will be provided for you.

--	--	--	--	--	--	--	--	--	--

Signature _____ Date _____

FORM 55

Population Management Hunts

LEGAL REQUIREMENTS	
License Required	Any valid hunting or combination license EXCEPT a Three-Day Hunting (Class H) or an Apprentice Hunting License (See tables on pages 6–7 for Resident and Non-resident license fees).
Tag Required	Refer to page 34.
Legal Methods of Take	General Hunt: Any firearm, bow and arrow, or crossbow as prescribed in R12-4-304. Muzzleloader Hunt: Muzzleloader weapons as prescribed in R12-4-101 and R12-4-318, crossbow or bow and arrow as prescribed in R12-4-304. Archery-Only Hunt: Bow and arrow as prescribed in R12-4-304 and R12-4-318 and/or crossbow as allowed under R12-4-216. HAM Hunt: Handguns, muzzleloading rifles, muzzleloading handguns, crossbow, or bow and arrow and prescribed in R12-4-304 and R12-4-318.
Bag Limit	Refer to individual species annual bag limits. Note: annual bag limits apply to all population management hunts.

Population Management Seasons: Commission Order 26

DEER

DEER GENERAL POPULATION MANAGEMENT SEASONS

Open Areas do not include areas within municipal parks, municipal preserves, county parks, county preserves, airports, golf courses, or posted water treatment facilities (except as specifically opened in this Commission Order) or areas closed to hunting under A.R.S. Sections 17-303 and 17-304 or Commission Rules R12-4-301, R12-4-801, R12-4-802 and R12-4-803.

Season Dates	Notes	Open Areas	Legal Wildlife	Permits
Jan 1 - Dec 31, 2012	(1)	1	Designated deer	75
Jan 1 - Dec 31, 2012	(1)	2A	Designated deer	75
Jan 1 - Dec 31, 2012	(1)	2B	Designated deer	75
Jan 1 - Dec 31, 2012	(1)	2C	Designated deer	75
Jan 1 - Dec 31, 2012	(1)	12A	Designated deer	50
Jan 1 - Dec 31, 2012	(1)	12B	Designated deer	50
Jan 1 - Dec 31, 2012	(1)	13A	Designated deer	50
Jan 1 - Dec 31, 2012	(1)	13B	Designated deer	50
Jan 1 - Dec 31, 2012	(1)	19A, 20A, 20B, and 21	Designated deer	75
Jan 1 - Dec 31, 2012	(1)	27	Designated deer	75
Jan 1 - Dec 31, 2012	(1)	28	Designated deer	75
Jan 1 - Dec 31, 2012	(1)	29	Designated deer	75
Jan 1 - Dec 31, 2012	(1)	30A	Designated deer	75
Jan 1 - Dec 31, 2012	(1)	30B	Designated deer	75
Jan 1 - Dec 31, 2012	(1,5)	34A	Designated deer	75
Jan 1 - Dec 31, 2012	(1)	34B	Designated deer	75
Jan 1 - Dec 31, 2012	(1)	35A	Designated deer	75
Jan 1 - Dec 31, 2012	(1)	35B	Designated deer	75
Jan 1 - Dec 31, 2012	(1)	36A	Designated deer	75
Jan 1 - Dec 31, 2012	(1)	36B	Designated deer	75
Jan 1 - Dec 31, 2012	(1)	36C	Designated deer	75
Total				1475

DEER ARCHERY-ONLY POPULATION MANAGEMENT SEASONS

Open Areas do not include areas within municipal parks, municipal preserves, county parks, county preserves, airports, golf courses, or posted water treatment facilities (except as specifically opened in this Commission Order) or areas closed to hunting under A.R.S. Sections 17-303 and 17-304 or Commission Rules R12-4-301, R12-4-801, R12-4-802 and R12-4-803.

Season Dates	Notes	Open Areas	Legal Wildlife	Permits
Jan 1 - Dec 31, 2012	(1)	43B	Designated deer	50
Total				50

ELK

ELK GENERAL POPULATION MANAGEMENT SEASONS

Open Areas do not include areas within municipal parks, municipal preserves, county parks, county preserves, airports, golf courses, or posted water treatment facilities (except as specifically opened in this Commission Order) or areas closed to hunting under A.R.S. Sections 17-303 and 17-304 or Commission Rules R12-4-301, R12-4-801, R12-4-802 and R12-4-803.

Season Dates	Notes	Open Areas	Legal Wildlife	Permits
Jan 1 - Dec 31, 2012	(1)	1 and 27	Designated elk	200
Jan 1 - Dec 31, 2012	(1)	2A and 2B	Designated elk	100
Jan 1 - Dec 31, 2012	(1)	3A	Designated elk	100
Jan 1 - Dec 31, 2012	(1)	3C	Designated elk	100
Jan 1 - Dec 31, 2012	(1)	4A and 4B	Designated elk	100
Jan 1 - Dec 31, 2012	(1,6)	6A, 19A, and 21	Designated elk	30

Population Management Hunts

Population Management Seasons: Commission Order 26 (continued)

ELK

ELK GENERAL POPULATION MANAGEMENT SEASONS

Open Areas do not include areas within municipal parks, municipal preserves, county parks, county preserves, airports, golf courses, or posted water treatment facilities (except as specifically opened in this Commission Order) or areas closed to hunting under A.R.S. Sections 17-303 and 17-304 or Commission Rules R12-4-301, R12-4-801, R12-4-802 and R12-4-803.

Season Dates	Notes	Open Areas	Legal Wildlife	Permits
Jan 1 - Dec 31, 2012	(1)	16A and 44A	Designated elk	15
Jan 1 - Dec 31, 2012	(1)	15A, 15B, and 18A	Designated elk	50
Jan 1 - Dec 31, 2012	(1)	17A, 17B, 18B, 19B, 20A, and 20C	Designated elk	115
Jan 1 - Dec 31, 2012	(1)	22	Designated elk	75
Jan 1 - Dec 31, 2012	(1)	23	Designated elk	75
Jan 1 - Dec 31, 2012	(1,3,10)	28, 31, and 32	Designated elk	35
Total				995

ELK MUZZLELOADER POPULATION MANAGEMENT SEASONS

Open Areas do not include areas within municipal parks, municipal preserves, county parks, county preserves, airports, golf courses, or posted water treatment facilities (except as specifically opened in this Commission Order) or areas closed to hunting under A.R.S. Sections 17-303 and 17-304 or Commission Rules R12-4-301, R12-4-801, R12-4-802 and R12-4-803.

Season Dates	Notes	Open Areas	Legal Wildlife	Permits
Jan 1 - Dec 31, 2012	(1)	3B and 3C	Designated elk	100
Total				100

ELK HAM POPULATION MANAGEMENT SEASONS

Open Areas do not include areas within municipal parks, municipal preserves, county parks, county preserves, airports, golf courses, or posted water treatment facilities (except as specifically opened in this Commission Order) or areas closed to hunting under A.R.S. Sections 17-303 and 17-304 or Commission Rules R12-4-301, R12-4-801, R12-4-802 and R12-4-803.

Season Dates	Notes	Open Areas	Legal Wildlife	Permits
Jan 1 - Dec 31, 2012	(1,3,10)	28, 31, and 32	Designated elk	25
Total				25

ELK ARCHERY-ONLY POPULATION MANAGEMENT SEASONS

Open Areas do not include areas within municipal parks, municipal preserves, county parks, county preserves, airports, golf courses, or posted water treatment facilities (except as specifically opened in this Commission Order) or areas closed to hunting under A.R.S. Sections 17-303 and 17-304 or Commission Rules R12-4-301, R12-4-801, R12-4-802 and R12-4-803.

Season Dates	Notes	Open Areas	Legal Wildlife	Permits
Jan 1 - Dec 31, 2012	(1)	1 and 27	Designated elk	100
Jan 1 - Dec 31, 2012	(1)	3B and 3C	Designated elk	100
Jan 1 - Dec 31, 2012	(1)	4A and 4B	Designated elk	75
Jan 1 - Dec 31, 2012	(1,6)	6A, 19A, and 21	Designated elk	30
Jan 1 - Dec 31, 2012	(1)	22	Designated elk	50
Jan 1 - Dec 31, 2012	(1)	23	Designated elk	50
Total				405

JAVELINA

JAVELINA GENERAL POPULATION MANAGEMENT SEASONS

Open Areas do not include areas within municipal parks, municipal preserves, county parks, county preserves, airports, golf courses, or posted water treatment facilities (except as specifically opened in this Commission Order) or areas closed to hunting under A.R.S. Sections 17-303 and 17-304 or Commission Rules R12-4-301, R12-4-801, R12-4-802 and R12-4-803.

Season Dates	Notes	Open Areas	Legal Wildlife	Permits
Jan 1 - Dec 31, 2012	(1)	1 and 27	Any javelina	20
Jan 1 - Dec 31, 2012	(1)	3B and 3C	Any javelina	20
Jan 1 - Dec 31, 2012	(1)	22 and 23	Any javelina	10
Jan 1 - Dec 31, 2012	(1)	24A and 24B	Any javelina	10
Jan 1 - Dec 31, 2012	(1)	28	Any javelina	50
Jan 1 - Dec 31, 2012	(1,3)	30A	Any javelina	50
Jan 1 - Dec 31, 2012	(1,3)	30B	Any javelina	50
Jan 1 - Dec 31, 2012	(1,10)	31	Any javelina	25
Jan 1 - Dec 31, 2012	(1,3,10)	32	Any javelina	25
Jan 1 - Dec 31, 2012	(1,4)	35A	Any javelina	25
Jan 1 - Dec 31, 2012	(1,6)	37A	Any javelina	25
Jan 1 - Dec 31, 2012	(1)	39 and 41	Any javelina	50
Total				360

Population Management Hunts

Population Management Seasons: Commission Order 26 (continued)

JAVELINA

JAVELINA HAM POPULATION MANAGEMENT SEASONS

Open Areas do not include areas within municipal parks, municipal preserves, county parks, county preserves, airports, golf courses, or posted water treatment facilities (except as specifically opened in this Commission Order) or areas closed to hunting under A.R.S. Sections 17-303 and 17-304 or Commission Rules R12-4-301, R12-4-801, R12-4-802 and R12-4-803.

Season Dates	Notes	Open Areas	Legal Wildlife	Permits
Jan 1 - Dec 31, 2012	(1)	28	Any javelina	50
Jan 1 - Dec 31, 2012	(1,3)	30A	Any javelina	50
Jan 1 - Dec 31, 2012	(1,3)	30B	Any javelina	50
Jan 1 - Dec 31, 2012	(1,10)	31	Any javelina	25
Jan 1 - Dec 31, 2012	(1,3,10)	32	Any javelina	25
Jan 1 - Dec 31, 2012	(1,4)	35A	Any javelina	25
Jan 1 - Dec 31, 2012	(1,6)	37A	Any javelina	25
Total				250

JAVELINA ARCHERY-ONLY POPULATION MANAGEMENT SEASONS

Open Areas do not include areas within municipal parks, municipal preserves, county parks, county preserves, airports, golf courses, or posted water treatment facilities (except as specifically opened in this Commission Order) or areas closed to hunting under A.R.S. Sections 17-303 and 17-304 or Commission Rules R12-4-301, R12-4-801, R12-4-802 and R12-4-803.

Season Dates	Notes	Open Areas	Legal Wildlife	Permits
Jan 1 - Dec 31, 2012	(1)	1 and 27	Any javelina	20
Jan 1 - Dec 31, 2012	(1)	3B and 3C	Any javelina	20
Jan 1 - Dec 31, 2012	(1)	4B	Any javelina	20
Jan 1 - Dec 31, 2012	(1)	25M, 26M, 38M, and 47M	Any javelina	25
Jan 1 - Dec 31, 2012	(1,4)	35A	Any javelina	25
Jan 1 - Dec 31, 2012	(1,6)	37A	Any javelina	25
Total				135

BUFFALO

BUFFALO GENERAL POPULATION MANAGEMENT SEASONS

Open Areas do not include areas within municipal parks, municipal preserves, county parks, county preserves, airports, golf courses, or posted water treatment facilities (except as specifically opened in this Commission Order) or areas closed to hunting under A.R.S. Sections 17-303 and 17-304 or Commission Rules R12-4-301, R12-4-801, R12-4-802 and R12-4-803.

Season Dates	Notes	Open Areas	Legal Wildlife	Permits
Jan 1 - Dec 31, 2012	(1,7)	5A and 5B	Designated buffalo	10
Jan 1 - Dec 31, 2012	(1,7,8)	12A, 12B, and 13A	Designated buffalo	150
Total				160

LEGAL METHODS OF TAKE: Bow and arrow, centerfire handguns, centerfire rifles, muzzleloading rifles, or all other rifles using black powder as prescribed in R12-4-304. Bow and arrow or centerfire handguns may NOT be used on Raymond Wildlife Area.

BEAR

BEAR GENERAL POPULATION MANAGEMENT SEASONS

Open Areas do not include areas within municipal parks, municipal preserves, county parks, county preserves, airports, golf courses, or posted water treatment facilities (except as specifically opened in this Commission Order) or areas closed to hunting under A.R.S. Sections 17-303 and 17-304 or Commission Rules R12-4-301, R12-4-801, R12-4-802 and R12-4-803.

Season Dates	Notes	Open Areas	Legal Wildlife	Permits
Jan 1 - Dec 31, 2012	(1,2,9)	1 and 27	Any bear except sow with cubs	4
Jan 1 - Dec 31, 2012	(1,2,9)	3B and 3C	Any bear except sow with cubs	4
Jan 1 - Dec 31, 2012	(1,2,9)	4A and 4B	Any bear except sow with cubs	4
Jan 1 - Dec 31, 2012	(1,2,6,9)	20B and 21	Any bear except sow with cubs	5
Jan 1 - Dec 31, 2012	(1,2,9)	22 and 23	Any bear except sow with cubs	10
Jan 1 - Dec 31, 2012	(1,2,9)	24A and 24B	Any bear except sow with cubs	5
Jan 1 - Dec 31, 2012	(1,2,9)	28	Any bear except sow with cubs	5
Jan 1 - Dec 31, 2012	(1,2,3,9)	29	Any bear except sow with cubs	5
Jan 1 - Dec 31, 2012	(1,2,3,9)	30A	Any bear except sow with cubs	5
Jan 1 - Dec 31, 2012	(1,2,9,10)	31	Any bear except sow with cubs	5
Jan 1 - Dec 31, 2012	(1,2,3,9,10)	32	Any bear except sow with cubs	3
Jan 1 - Dec 31, 2012	(1,2,5,9)	34A	Any bear except sow with cubs	3
Jan 1 - Dec 31, 2012	(1,2,4,9)	35A	Any bear except sow with cubs	5
Jan 1 - Dec 31, 2012	(1,2,9)	35B	Any bear except sow with cubs	5
Total				68

LEGAL METHODS OF TAKE: Any firearm or bow and arrow as prescribed in R12-4-304.

Population Management Hunts

Population Management Seasons: Commission Order 26 *(continued)*

BEAR

BEAR HAM POPULATION MANAGEMENT SEASONS

Open Areas do not include areas within municipal parks, municipal preserves, county parks, county preserves, airports, golf courses, or posted water treatment facilities (except as specifically opened in this Commission Order) or areas closed to hunting under A.R.S. Sections 17-303 and 17-304 or Commission Rules R12-4-301, R12-4-801, R12-4-802 and R12-4-803.

Season Dates	Notes	Open Areas	Legal Wildlife	Permits
Jan 1 - Dec 31, 2012	(1,2,9)	28	Any bear except sow with cubs	5
Jan 1 - Dec 31, 2012	(1,2,3,9)	29	Any bear except sow with cubs	5
Jan 1 - Dec 31, 2012	(1,2,3,9)	30A	Any bear except sow with cubs	5
Jan 1 - Dec 31, 2012	(1,2,9,10)	31	Any bear except sow with cubs	5
Jan 1 - Dec 31, 2012	(1,2,3,9,10)	32	Any bear except sow with cubs	3
Jan 1 - Dec 31, 2012	(1,2,5,9)	34A	Any bear except sow with cubs	3
Total				26

LEGAL METHODS OF TAKE: Handguns, muzzleloading rifles, muzzleloading handguns, or bow and arrow as prescribed in R12-4-304 and R12-4-318.

BEAR ARCHERY-ONLY POPULATION MANAGEMENT SEASONS

Open Areas do not include areas within municipal parks, municipal preserves, county parks, county preserves, airports, golf courses, or posted water treatment facilities (except as specifically opened in this Commission Order) or areas closed to hunting under A.R.S. Sections 17-303 and 17-304 or Commission Rules R12-4-301, R12-4-801, R12-4-802 and R12-4-803.

Season Dates	Notes	Open Areas	Legal Wildlife	Permits
Jan 1 - Dec 31, 2012	(1,2,9)	1 and 27	Any bear except sow with cubs	4
Jan 1 - Dec 31, 2012	(1,2,9)	3B and 3C	Any bear except sow with cubs	4
Jan 1 - Dec 31, 2012	(1,2,9)	4A and 4B	Any bear except sow with cubs	4
Jan 1 - Dec 31, 2012	(1,2,6,9)	20B and 21	Any bear except sow with cubs	2
Jan 1 - Dec 31, 2012	(1,2,9)	22 and 23	Any bear except sow with cubs	2
Jan 1 - Dec 31, 2012	(1,2,9)	24A and 24B	Any bear except sow with cubs	2
Jan 1 - Dec 31, 2012	(1,2,4,9)	35A	Any bear except sow with cubs	5
Jan 1 - Dec 31, 2012	(1,2,9)	35B	Any bear except sow with cubs	5
Total				28

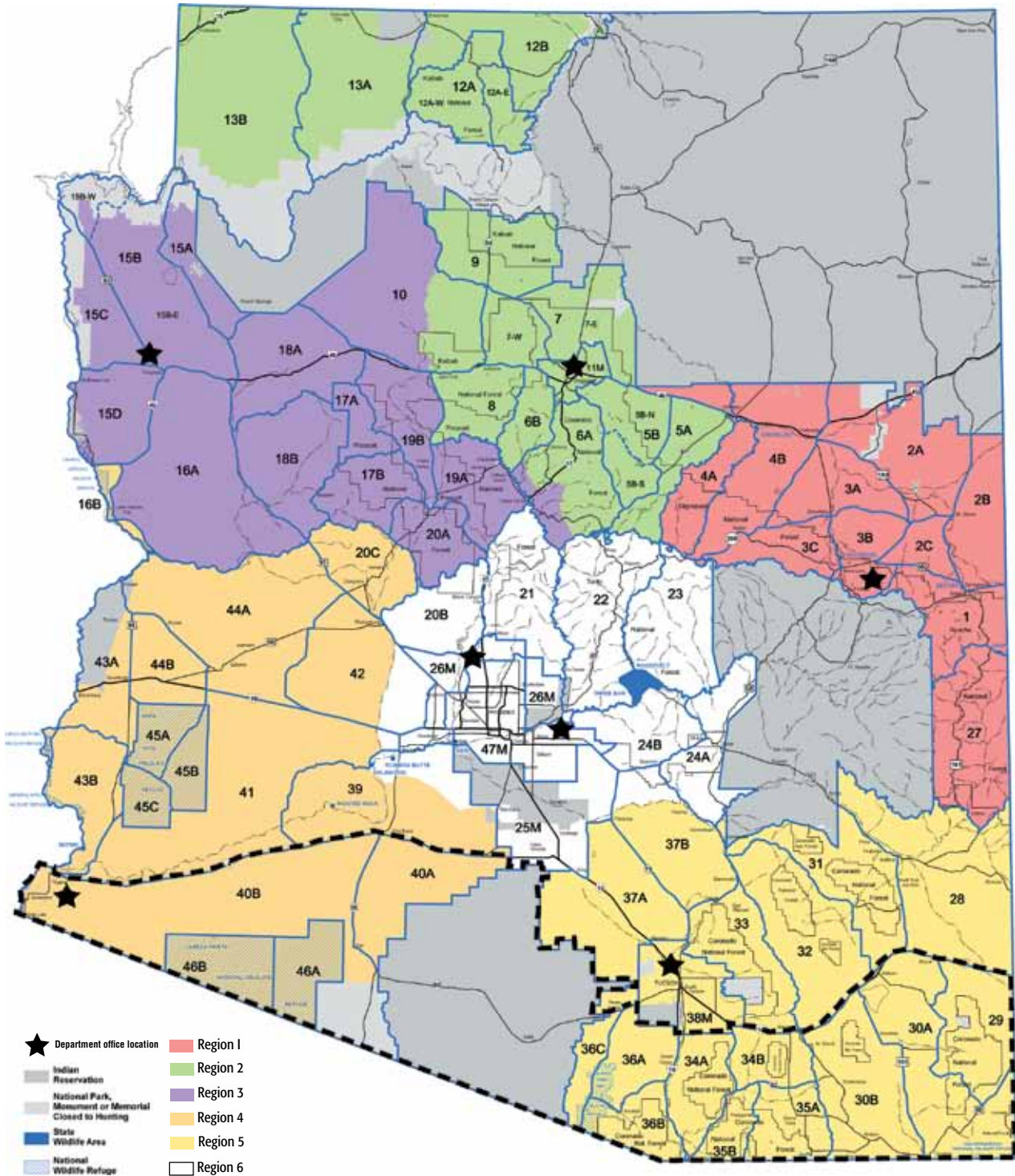
Population Management Hunts

Population Management Notes:

1. These seasons shall be held in accordance with R12-4-115 and may include shorter time frames, smaller geographic areas, and specification of legal wildlife within that described in this Commission Order.
2. In accordance with R12-4-318, dogs may not be used to pursue bears between January 1 and July 31.
3. Hunter access in Units 29, 30A, 30B, and 32 is extremely restricted. Applicants should not apply for these units unless they have secured access.
4. The Fort Huachuca Army Garrison in Unit 35A is open to hunting only to properly licensed military and civilian personnel holding a valid Fort Huachuca post hunting permit. Special regulations must be obtained from Fort Huachuca. Applications for these hunts must be submitted to the Arizona Game and Fish Department.
5. The Santa Rita Wildlife Area in Unit 34A is actively used for studies in wildlife management. Researchers are present all months and study sites are not always recognizable; hunters are urged to use caution while hunting and take care not to disturb study sites.
6. The Grand Canyon-Parashant, Vermilion Cliffs, Sonoran Desert, Ironwood Forest, and Agua Fria National Monuments are open to hunting.
7. Individuals that have previously harvested a buffalo in Arizona and have met the one (1) per lifetime bag limit are not eligible to purchase the restricted nonpermit tag for buffalo.
8. All buffalo hunters, including unsuccessful hunters or hunters who did not hunt, with a buffalo restricted nonpermit-tag for the House Rock Wildlife Area herd shall check out in person or by telephone at either the Department's Flagstaff regional office or the House Rock Wildlife Area headquarters within three days following the close of the season. A successful buffalo hunter shall report information about the kill to the Department within five business days after taking the buffalo either in person at the House Rock Wildlife Area headquarters or in person or by telephone at the Department's Flagstaff regional office. If the kill is reported by telephone, the report shall include the name of the hunter, the hunter's tag number, the sex of the buffalo taken, the number of days hunted, and a telephone number where the hunter can be reached for additional information (R12-4-306).
9. As prescribed in R12-4-308, all hunters must contact an Arizona Game and Fish Department office in person or by telephone at 1-800-970-BEAR (2327) within 48 hours of taking a bear. The report shall include the hunter's name, hunting license number, tag number, sex of the bear taken, management unit where the bear was taken, and telephone number at which the hunter can be reached to obtain additional information. Within 10 days of taking a bear, the hunter shall present the bear's skull, hide, and attached proof of sex to a designated Arizona Game and Fish Department employee for inspection. If a hunter freezes the skull or hide before presenting it for inspection, the hunter shall prop the jaw open to allow access to the teeth and ensure that the attached proof of sex is identifiable and accessible (pursuant to R12-4-308). A premolar tooth will be removed during the inspection. Successful hunters are encouraged to contact the nearest Department office by telephone to coordinate inspections.
10. Unit 31 and 32 hunts -- Access to Aravaipa Canyon Wildlife Area (as prescribed in R12-4-802) is allowed by permit only, available through the Safford Field Office of the Bureau of Land Management. For more information, contact the Safford Field Office at (928) 348-4400 or www.blm.gov/az/sfo/aravaipa/aravaipa.htm.

Game Management Unit Map

See the current Arizona Hunting and Trapping Regulations booklet for legal unit boundary descriptions.



--- Homeland security issues along the international border may affect the quality of a person's hunt.

REGION 1
2878 E. White Mountain Blvd., Pinetop 85935
(928) 367-4281

REGION 3
5325 N. Stockton Hill Road, Kingman 86409
(928) 692-7700

REGION 5
555 N. Greasewood Road, Tucson 85745
(520) 628-5376

REGION 2
3500 S. Lake Mary Road, Flagstaff 86001
(928) 774-5045

REGION 4
9140 E. 28th Street, Yuma 85365
(928) 342-0091

REGION 6
7200 E. University Drive, Mesa 85207
(480) 981-9400

WELCOME TO
“THE GREAT INDOORS FOR THOSE WHO LOVE THE GREAT OUTDOORS”™



SAVE \$10 IN STORE

SPORTSMAN'S WAREHOUSE

HUNTING • FISHING • CAMPING • RELOADING • OUTERWEAR • FOOTWEAR

\$10 GIFT CERTIFICATE \$10
 Redeemable in store only on any purchase of \$100 or more

Valid Through
 September 30, 2012



PHOENIX 19205 N. 27th Ave. (623) 516-1400	MESA 1750 S. Greenfield Road (480) 538-1111	TUCSON 3945 W. Costco Drive (520) 877-4500
--	--	---

Shop Sportsman's Warehouse for all of your
 Hunting, Fishing, Camping, Reloading, Outdoor Clothing and Footwear.
 Save \$10 on your next in store purchase of \$100 or more! • www.SportsmansWarehouse.com

Not redeemable for cash, license or gift card. Cannot be combined with other discounts or offers. One coupon per transaction, per customer, per day. Must present this coupon at time of transaction.

Arizona Game & Fish Department OUTDOOR EXPO



**March 31 and April 1, 2012
Ben Avery Shooting Facility,
4044 W. Black Canyon Blvd., Phoenix, AZ**

FREE ADMISSION AND PARKING

Experience the great outdoors at the Arizona Game and Fish Department 2012 Outdoor Expo. Loads of exciting hands-on activities, educational presentations/demos, and the chance to meet with outdoor groups, agencies and vendors to learn about Arizona's outdoor recreational opportunities.

- Hunting
- Fishing
- Archery
- Camping
- Watercraft recreation
- Shooting sports
- Off-highway vehicle recreation
- Conservation and wildlife education
- Visit with more than 150 exhibitors

and much, much more!

Visit www.azgfd.gov/expo for updates.

ARIZONA OUTDOOR PRODUCTS AND SERVICES

COVERS



CLICKITCOVERIT
Providing Quality Vehicle
Covers & Accessories

Camo ATV Covers
RV Covers • Truck Covers

FREE SHIPPING

www.ClickItCoverIt.com 800-758-6070
DR Global Marketing, LLC • Chino Valley, AZ

FIREARM COATINGS

FIREARM COATINGS
Refinishing/Gunsmithing/1911's/Hunting Rifles/Ars/Lic. FFL

WWW.ACOATING.COM
TIM@ACOATING.COM

75th Ave/Peoria drop offs by appt.
5-10 Day turn around

GUIDES / OUTFITTERS



Arizona High Country
Outfitter & Guide Service

928-713-3264

Johnny Casner
Paulden, AZ

www.AzHighCountryOutfitters.com

Bars Hunting Service, LLC
Guided Archery, Muzzleloader, Rifle Hunts

National Forest Permits
Insured • State of Arizona

Marco Firriolo 602-569-0484
Licensed Guide cell 928-821-1192

www.barshuntingservice.com



Specializing in
Big Game Hunts
in Arizona &
New Mexico

928-587-6990

www.huntbucksnbulls.com



Hunt Arizona's Largest Trophys!

JP Vicente
P.O. Box 12166
Prescott, AZ 86304
928-925-9395

www.BigChinoGuideService.com • BigChinoGuideService@Gmail.com • HuntAz@BigChinoGuideService.com

BIG CHINO GUIDE SERVICE

DC Outfitters.com
Antelope • Elk • Deer • Javelina • Sheep • Lion • Bear

Specializing in Units 1, 2, 27, 28, 31, 32 - Arizona

Dennis Jacob (928) 428-7979
www.DCoutfitters.com
Clay Gomez (928) 428-4547

6567 E. Hwy. 70 • Safford, AZ 85546

GUIDES / OUTFITTERS

Bryant Guide & Outfitter Service

Specializing in Trophy Guided Hunts

Statewide All Species



Archery – Rifle Muzzleloader

Hunts Tailored to Your Needs!

Randy Bryant

Licensed, Insured, USFS & BLM Permitted
928-422-4045 • 928-853-0317
P.O. Box 715 Seligman, AZ 86337

CUERNO'S OUTFITTERS

Tomas Moreno (Cuerno)
P.O. Box 924, Morenci, AZ 85540 Unit 27 & 28
www.cuernosoutfitters.net (928) 215-1293

DIERINGER OUTFITTERS

Sam Dieringer 928-322-2627
www.dieringeroutfitters.com



GUIDES / OUTFITTERS

Goodman Outfitters



Specializing in
Cous Deer,
Elk, Mule Deer,
Antelope & Turkey

Over 21 Years
Experience

Junior Hunts

Ty Goodman 928-978-1058
www.goodmanoutfitters.blogspot.com
From Payson, AZ

Knight Guiding / Outfitters
Elk Hunts • Deer Hunts • Antelope Hunts
Arizona & New Mexico Guided Hunts

Email: daric@knightguiding.com
Specializing in Units 1, 2b, & 27

Daric Knight Mobile: (928) 521-9897
PO Box 212 1-800-814-6451
Springerville, AZ 85938 www.knightguiding.com

Northern Arizona Outfitters & Guide Service



398 B&C

Specializing in Elk & Deer

Tim & Mike McCullough
(928) 853-9436 (928) 606-5721
1614 N First St, Flagstaff, AZ 86004
www.northernarizonaoutfitters.com

STARR GUIDE SERVICE
Hunting All Species
Specializing
Bear & Lion Hunts

Doug Starr
918-713-3862 or 928-713-7146
www.StarrGuideService.com



SIX POINT OUTFITTERS
30 Years Hunting Experience
Guide: Mike Allsop
Statewide Hunting
Show Low, Arizona 85901
(928) 537-0124

GUIDES / OUTFITTERS CONTINUED

ARIZONA OUTDOOR PRODUCTS AND SERVICES

GUIDES / OUTFITTERS

480-988-9654
575-547-2413 ALL BIG GAME

PO Box 490
 Higley, AZ 85236

www.timberlineoutfitters.com
 Arizona, New Mexico, Mexico

W4 OUTFITTERS
 "We do it to it"

Elk • Antelope • Mule Deer • Javelina
 Fully Guided • Drop Camps • Custom Hunts
 Pre Hunt Scouting Trips • Year Round Camping Trips

John Whitlow Res: (928) 537-4036
 4756 Hidden Way Spur Cell: (928) 521-0259
 Show Low, AZ 85901 email: w4huntaz@frontiernet.net

W.C. Long Outfitters
 Quality Pack Hunts • Hunts Fitted for Individuals

Archery • Muzzle Loader • Rifle • Elk • Mule Deer • Coues Deer
 Sheep • Lion • Bear • Javelina • Turkey • Quail

Bill Long Jamie Woodside, Field Mgr.
 29800 North Rd. 928-651-5431
 Hotchkiss, CO 81419

Phone: 970-872-2004
 Fax: 970-872-2005
 Cell: 970-471-1710

www.azwclongoutfitters.com
 AZ Statewide
 Licensed & Insured
 USFS & BLM Permitted

GUIDES / OUTFITTERS

Specializing In Your Archery Hunt!

WARD'S OUTFITTERS

100% opportunity for past eight years

Mule & Coues Deer, Elk, Antelope, and Javelina

Steven Ward 520-404-5114
 www.wardsoutfitters.com

MAPS

"Get Where They Live"

(928) 420-2724

Flatline Maps
 Terrain Adventure

www.FlatlineMaps.com
 Arizona Unit Maps

MEAT / GAME PROCESSING

SAUSAGE & JERKY SUPPLIES & EQUIPMENT

Allied Kenco Sales
 "Supplying Everything But The Meat!"

26 Lyerly
 Houston, TX 77022
 www.alliedkenco.com

713-691-2935 800-356-5189
 Fax 713-691-3250 aks@alliedkenco.com

FREE CATALOG

Rhonda's Butcher Shop

We deliver to the Verde Valley, Prescott, Phoenix, Tucson, Yuma, Kingman and all points between

21 varieties of fresh and smoked sausages!

Detailed information at
 www.rhondasbutchershop.com

928-774-1922

Porter Mountain Meat Packing

Domestic & Wild Game Processing and Retail Sales

928-368-4444

Jessica Petersen
 3807 Porter Mountain Rd.
 Lakeside, AZ 85929

VERDE VALLEY MEAT PROCESSING

ALL WILD GAME
 "BEST IN THE WEST!"
 SUMMER SAUSAGE, SMOKED STIX
 CUSTOM CUT AND FROZEN

Mike McReynolds
 SHOP (928) 567-0346 CELL (928) 821-2676
 545 S. MAIN ST., CAMP VERDE, AZ 86322 (SOUTH-EAST DOOR)

VON HANSON'S Wild Game Processing

Elk • Deer • Pigs
 Wild Game • Buffalo
 Mountain Lion
 Bear • Waterfowl

Meat Markets **(480) 917-2525**

Full Line of Smoked Sausages

Von Hanson's Meats & Spirits
 2390 North Alma School Rd., Chandler, AZ 85224
 www.vonhansonsmeats.net

OUTLAW OUTFITTERS

ELK RIFLE
 MULE & COUES DEER ARCHERY
 MUZZLE LOADER

APPLICATION SERVICE AVAILABLE

FULLY LICENSED & INSURED

ERIC MARTINEZ
602-380-7122

ERIC@HUNTINGWITHOUTLAW.COM
 WWW.HUNTINGWITHOUTLAW.COM

Greg Krogh - Mogollon Rim Outfitters

P.O.Box 163 Cell (775) 962-1721
 Chino Valley, AZ 86323 (928) 636-4807

26 Years of Guiding Experience
 www.mogollonrimoutfitters.com

"I Specialize in Personal Guiding Attention, Hunt with Outfitter/Guide That You Booked With, Don't Get Subbed Out!"
 "Full Time Outfitter, Harvesting Trophy Animals as a Licensed Guide Since 1987"

ARIZONA OUTDOOR PRODUCTS AND SERVICES

TAXIDERMISTRY

MAJESTICS



WILDLIFE ART
& TAXIDERMIST

Kevin Van Driel
21 Years Experience
(928) 368-2222

Meat Processing
at Same Location

3807 Porter Mtn. Rd.
Lakeside, AZ 85935
(Corner of Mountain View
and Porter Mountain Road)

Paulson Bros.
WILDLIFE STUDIOS
WORLD CLASS TAXIDERMISTRY SINCE 1980

Full service, national award winning taxidermy serving AZ since 1980.
Life-size, Game heads, Birds, Fish.
Average delivery time 4-5 months!

Full Shoulder Mounts
Antelope \$585.00
Deer \$585.00
Elk \$1050.00

Free Big Game Pick Up and Delivery Statewide!

www.taxidermyaz.com
623-516-4768

Wes' Western Taxidermy, LLC

European Mounts		Mounts
Deer.....150.....500	
Antelope.....150.....500	
Elk.....250.....900-1000	
Javelina.....100-125.....350-450	
Black Bear....150-250.....Call for Price	
Bison.....250-350.....Call for Price	

602-885-9781
www.wesswesterntaxidermy.com
Wes Monell • P.O. Box 86802 • Phoenix, AZ 85080

TAXIDERMISTRY

R&R Taxidermy
Keeping The Memory Alive
Serving Sportsmen for over 30 years
www.RandRtaxidermy.com
602-826-0265 • 480-694-6359
320 E. 10th Dr., Suite G • Mesa, AZ 85210
State and Federally Licensed

SBB Taxidermy
Tucson, AZ LLC
Quality Mounts at Affordable Prices
...In Half the Time!
520-445-1460
www.sbbtaxidermy.com
SMALL GAME • BIG GAME • PREDATOR • WATERFOWL

Signature Taxidermy Studio
Founded by Steve Favour
928-526-0456
800-495-3614
www.signaturetaxidermy.com
5440 E. Commerce, Flagstaff, AZ 86004

Southwest Wildlife
Fine Taxidermy Art LLC

"Where an obsession became a profession"
Award of Excellence
NTA Certified Taxidermist

Awards won at State & National levels in:
Fish, Birds, Gamehead, Lifesizes

Award-winning Taxidermy Art by:
Jim Hartsock
(480) 661-0372

MasterCard VISA
16443 N. 91st St. • Scottsdale

ARIZONA DESERT BIGHORN SHEEP SOCIETY

2012 RAFFLES

For Information On Prizes
And To Purchase Tickets
Visit Our Website:
WWW.ADBSS.ORG

Drawing for all raffles will take place at the Arizona Desert Bighorn Sheep Society annual banquet. Attendance not necessary to win. No phone orders. See website for details.

GETTING OUT IN THE
MIDDLE OF NOWHERE
IS GREAT.
MAKING IT BACK IS
WHAT COUNTS.

RIDENOW
POWERSPORTS

SALES
ACCESSORIES
SERVICE
PARTS

POLARIS
Kawasaki
can-am |
HONDA
SUZUKI
YAMAHA

Visit
www.ridenow.com
for a dealer near you!

TIRED OF PAYING VALLEY PRICES?

4

FOUR-SEASONS
MOTORSPORTS

928-474-3411

fourseasonmotorsports.com

HOME OF THE
HASSLE-FREE SALE



POLARIS
The Way Out.



- #1 RATED SERVICE DEPARTMENT
- NO CITY SALES TAX
- NO SALES COMMISSIONS
- WE WORK FOR YOU
- **TEST DRIVES AVAILABLE**
- ON THE SPOT FINANCING
- NO SALES GAMES
- DELIVERY AVAILABLE
- FULL LINE OF POLARIS PRODUCTS
- PARTS AND ACCESSORIES

**RENTALS
AVAILABLE!**

*Conveniently Located:
45 Minutes From The
Metro Phoenix Area
Rye, Arizona
(11 Miles South Of Payson
On Highway 87)*

ATVs can be hazardous to operate. Polaris adult models are for riders age 16 and older. Always wear a helmet and be sure to take a training course. For training information, see your Polaris dealer or call 1-800-342-3764