

MAP 1 CERTIFICATION OF SURVEY

NEW TUCSON
UNIT No. 26
BLOCKS 7 THRU 10
 BEING A SUBDIVISION OF A PORTION
 OF SECTION 9, T-17-S, R-16-E,
 G. & S. R. S. & M.
 PIMA COUNTY, ARIZONA

Blanton & Cole Architects - Engineers
 Tucson, Arizona
 12-21-526

MAP 2

NEW TUCSON
UNIT No. 28
BLOCKS 15 THRU 18
 BEING A SUBDIVISION OF A PORTION
 OF SECTION 9, T-17-S, R-16-E,
 G. & S. R. S. & M.
 PIMA COUNTY, ARIZONA

Blanton & Cole Architects - Engineers
 Tucson, Arizona
 12-21-526

MAP 3

NEW TUCSON
UNIT No. 29
BLOCKS 19 THRU 21

Blanton & Cole Architects - Engineers
 Tucson, Arizona
 12-21-526

MAP 3

DEDICATION

We the undersigned, hereby consent to the subdivision of the land in the manner shown on this plat. We hereby dedicate to the public all rights of way shown hereon, including all streets, alleys, drainage ways and easements, together with an additional five (5) foot aerial or overhead easement each side of all alleys and utility poles. Utility easements as shown hereon are dedicated for the purpose of installation and maintenance of utilities and sewerage. Natural drainage shall not be altered, distributed or obstructed without approval of the Pima County Board of Supervisors. ARIZONA LAND TITLE AND TRUST COMPANY, an Arizona Corporation, as Trustee under Trust Agreement No. 5602-T.

REPRODUCED FROM THE ORIGINAL BY: **ARIZONA LAND TITLE AND TRUST COMPANY**
 By: W. J. ... Authorized Officer

DEDICATION

We the undersigned, hereby consent to the subdivision of said land in the manner shown on this plat. We hereby dedicate to the use of the public all rights of way shown hereon, including all streets, alleys, drainage ways and easements, together with an additional five (5) foot aerial or overhead easement each side of all alleys and utility poles. Utility easements as shown hereon are dedicated for the purpose of installation and maintenance of utilities and sewerage. Natural drainage shall not be altered, distributed or obstructed without approval of the Pima County Board of Supervisors. ARIZONA LAND TITLE AND TRUST COMPANY, an Arizona Corporation, as Trustee under Trust Agreement No. 5602-T.

Authorized Officer

MAP 4

NEW TUCSON
UNIT No. 30
BLOCKS 22 THRU 27

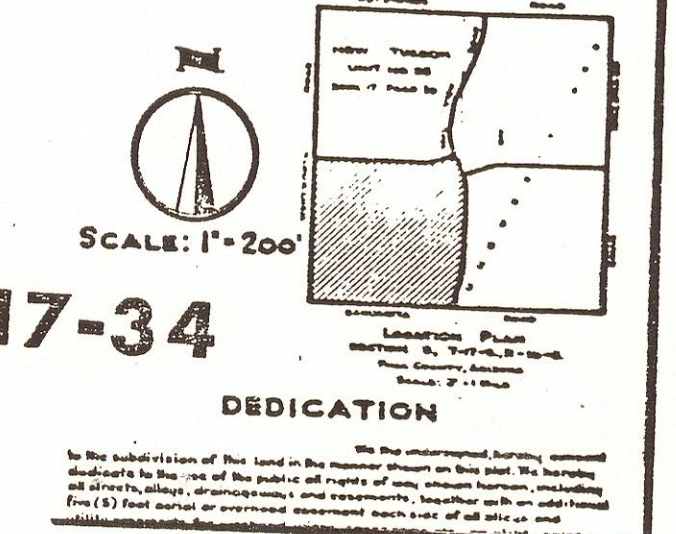
BEING A SUBDIVISION OF A PORTION OF THE S 1/2 OF SECTION 10, T-17-S, R-16-E, G. & S. R. S. & M. PIMA COUNTY, ARIZONA

2/20/92

Blanton & Cole Architects - Engineers
 Tucson, Arizona

Blanton & Cole Architects - Engineers
 Tucson, Arizona

Arizona Land Title and Trust Company
 SUBDIVISION PLAT FURNISHED BY

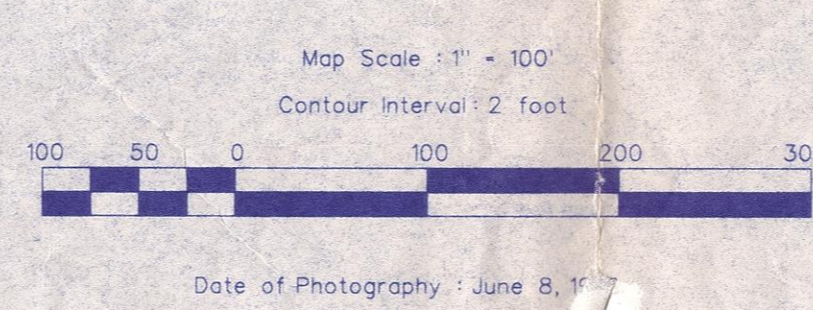
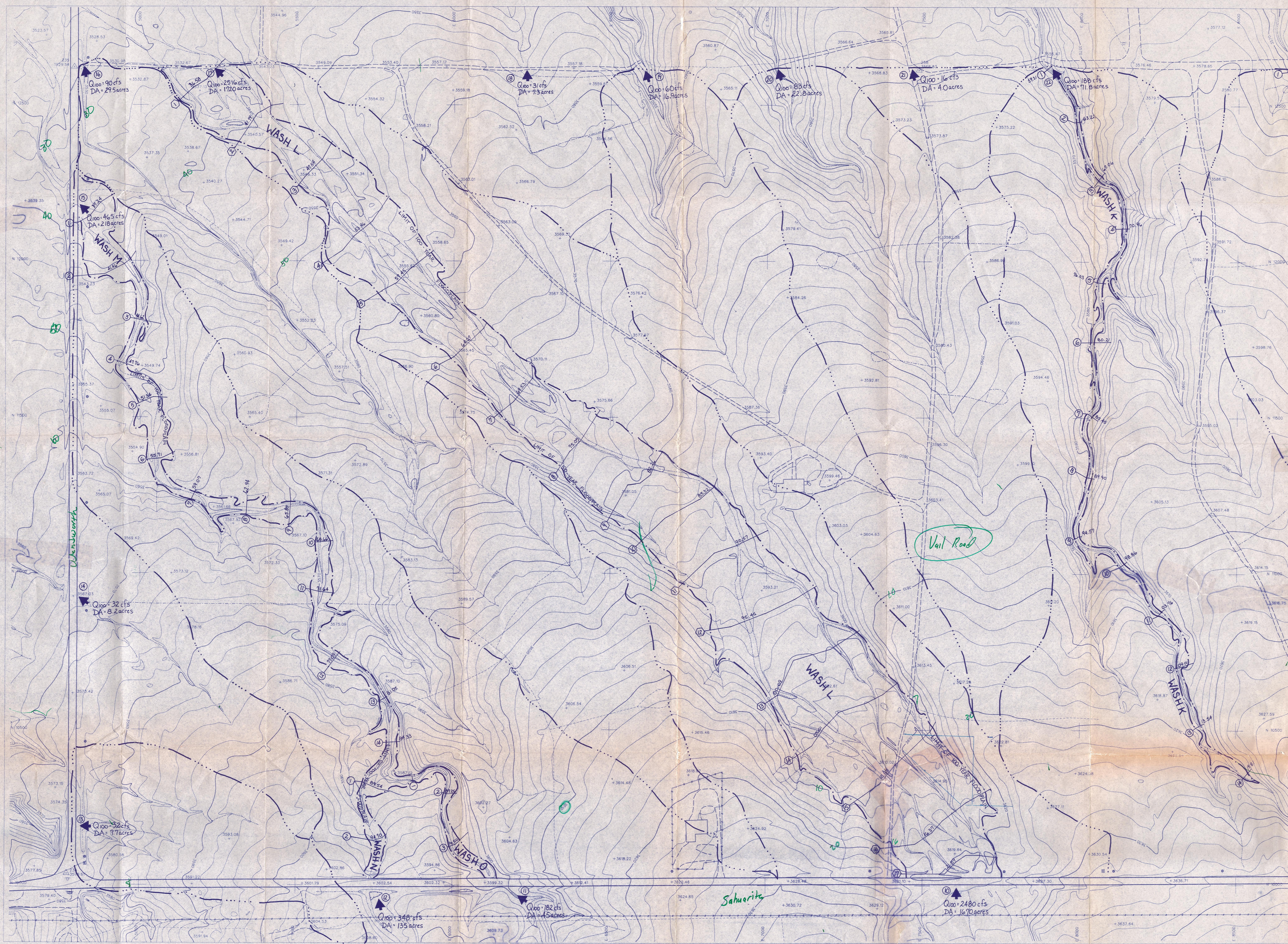


17-34

DEDICATION
 We the undersigned, hereby consent to the subdivision of the land in the manner shown on this plat. We hereby dedicate to the use of the public all rights of way shown hereon, including all streets, alleys, drainage ways and easements, together with an additional five (5) foot aerial or overhead easement each side of all alleys and utility poles. Utility easements as shown hereon are dedicated for the purpose of installation and maintenance of utilities and sewerage. Natural drainage shall not be altered, distributed or obstructed without approval of the Pima County Board of Supervisors. ARIZONA LAND TITLE AND TRUST COMPANY, an Arizona Corporation, as Trustee under Trust Agreement No. 5602-T.

THIS COPY OF RECORDED SUBDIVISION PLAT FURNISHED BY

BOOK 17 PAGE 34



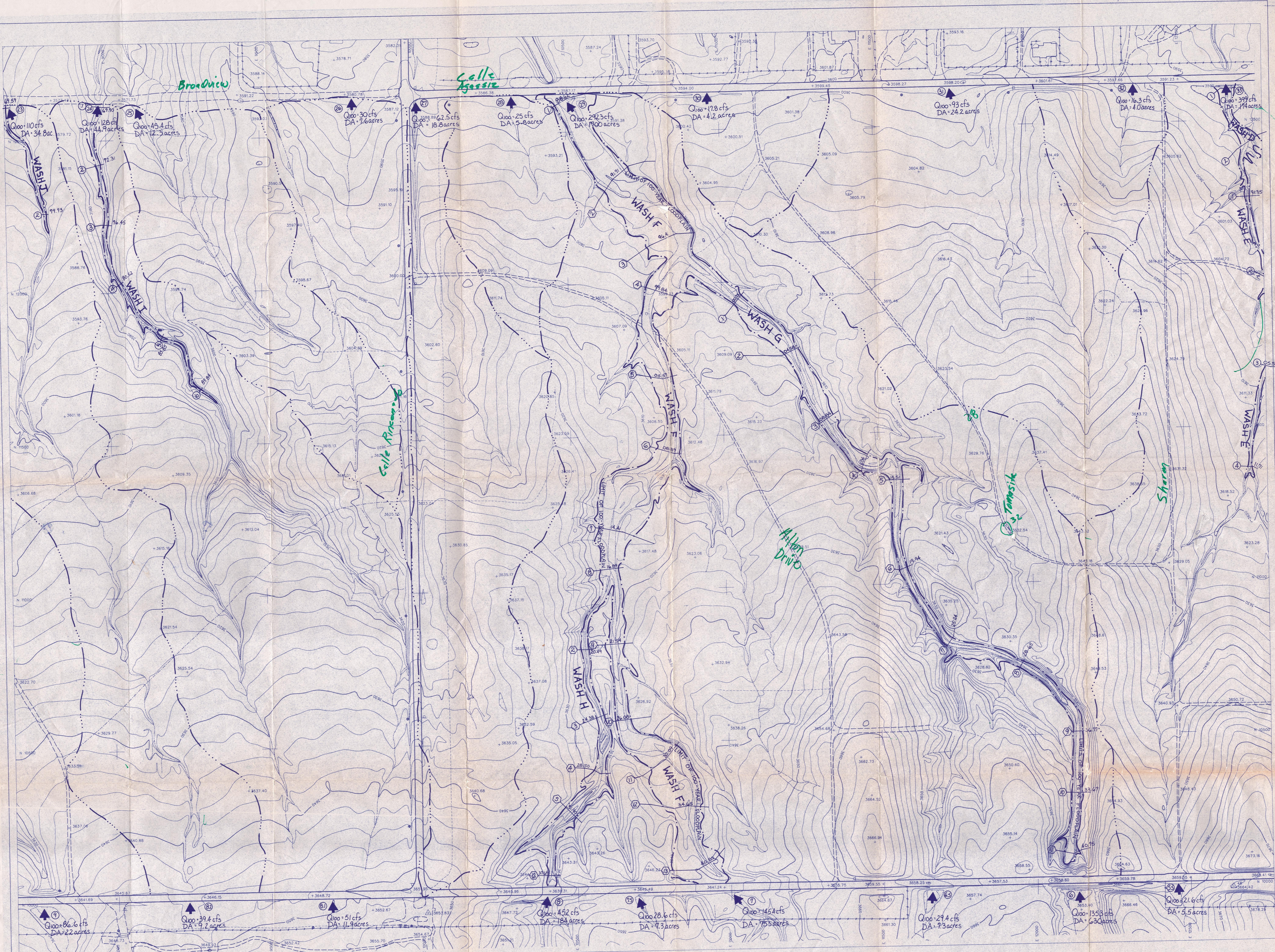
LEGEND

- CONCENTRATION POINT
- HEC-2 CROSS SECTION
- MANNING'S CROSS SECTION
- WATERSHED BOUNDARY
- 100-YEAR FLOODPLAIN

New Tucson Unit No. 24
 New Tucson Unit No. 24 (partially)
 CON Consultants USA Inc.
 New Tucson : Area 1

27

MAP # 1
 GEA 9502



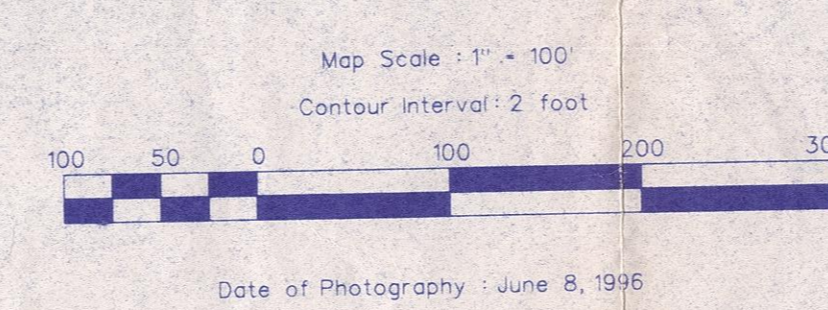
Q100=110 cfs DA=34.8 acres
 Q100=126 cfs DA=44.9 acres
 Q100=45.4 cfs DA=12.3 acres
 Q100=30 cfs DA=16.6 acres
 Q100=62.5 cfs DA=18.8 acres
 Q100=25 cfs DA=5.8 acres
 Q100=292.3 cfs DA=190.0 acres
 Q100=17.8 cfs DA=4.2 acres
 Q100=93 cfs DA=24.2 acres
 Q100=16.3 cfs DA=4.0 acres
 Q100=399 cfs DA=114 acres
 Q100=86.6 cfs DA=22 acres
 Q100=39.4 cfs DA=9.2 acres
 Q100=51 cfs DA=11.9 acres
 Q100=452 cfs DA=184 acres
 Q100=28.6 cfs DA=7.3 acres
 Q100=145.2 cfs DA=75.3 acres
 Q100=29.4 cfs DA=7.3 acres
 Q100=135.3 cfs DA=63.0 acres
 Q100=21.6 cfs DA=5.5 acres

LEGEND

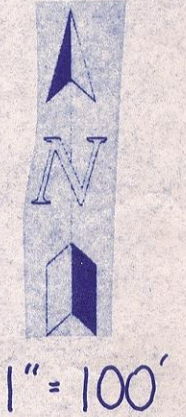
- CONCENTRATION POINT
- HEC-2 CROSS SECTION
- MANNING'S CROSS SECTION
- 100-YEAR FLOODPLAIN
- WATERSHED BOUNDARY

ICON Consultants USA Inc.
 New Tucson : Area 1

RECEIVED
 JUL 19 1995



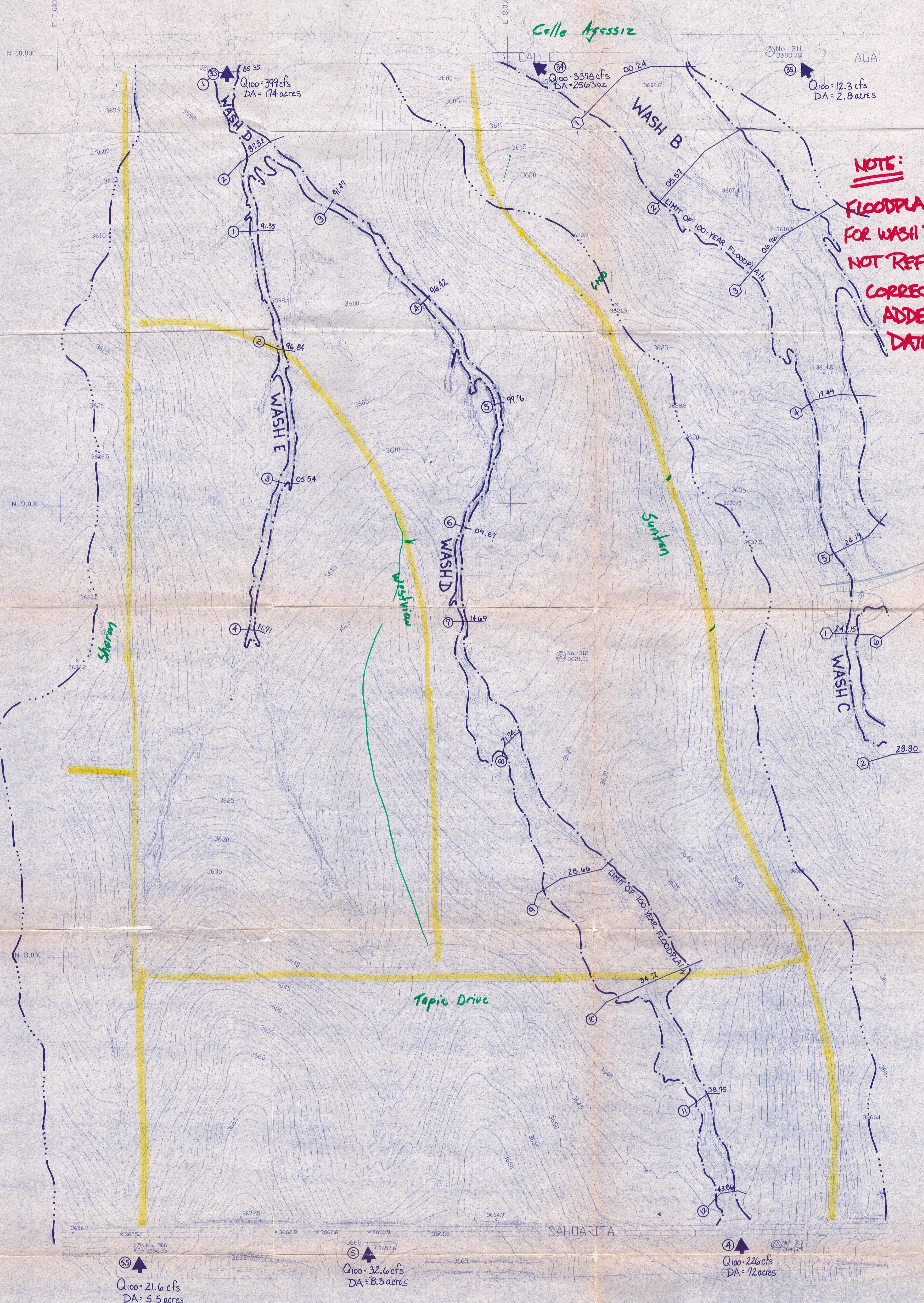
MAP #2
 0604 9302



1" = 100'

Calle Agassiz

NOTE:
FLOODPLAIN LIMITS
FOR WASH B & C DO
NOT REFLECT
CORRECTIONS OF
ADDENDUM
DATED 10/3/96
CDS

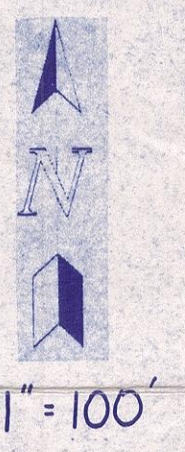
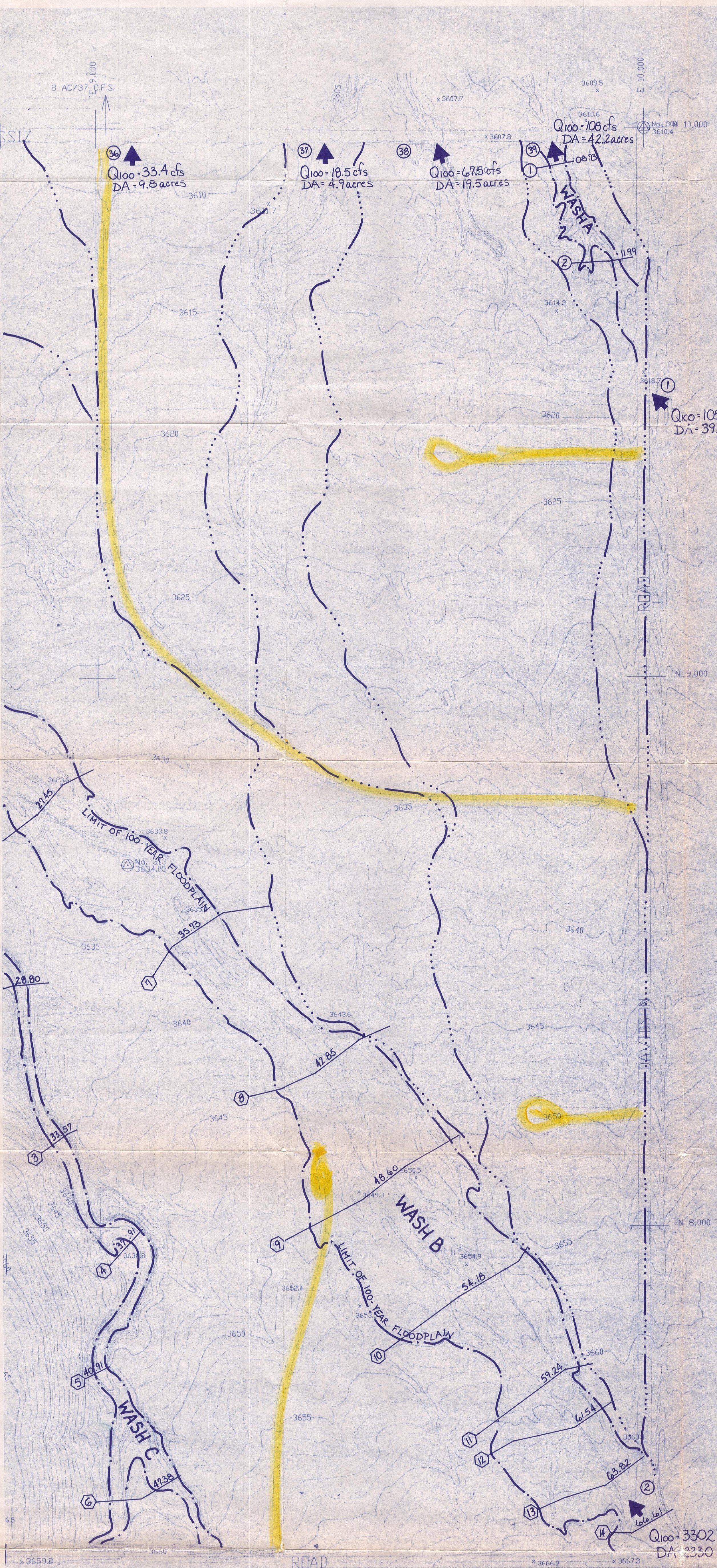


LEGEND

- CONCENTRATION POINT
- HEC-2 CROSS SECTION
- MANNING'S CROSS SECTION
- WATERSHED BOUNDARY
- 100-YEAR FLOODPLAIN



MAP #3



NOTE:
 Floodplain Limits
 FOR WASH B & C
 DO NOT REFLECT
 CORRECTIONS OF
 ADDENDUM DATED 10/3/96
 ADS

3953.8
 Q100 = 544 cfs
 DA = 154 acres

SECTION COR

10	11
15	14

T. 17S., R. 16E

LEGEND

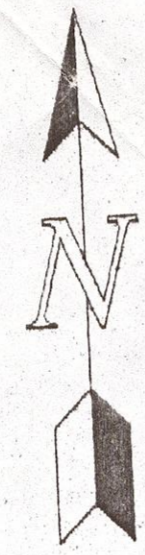
- CONCENTRATION POINT
- HEC-2 CROSS SECTION
- MANNING'S CROSS SECTION
- 100-YEAR FLOODPLAIN
- WATERSHED BOUNDARY



NEW TUCSON ALL - WEATHER ACCESS EXHIBIT

LEGEND

- △ Percolation Test Location
- Lots Owned by Moshe Gedalia, et al
- One Hundred Year Floodplain

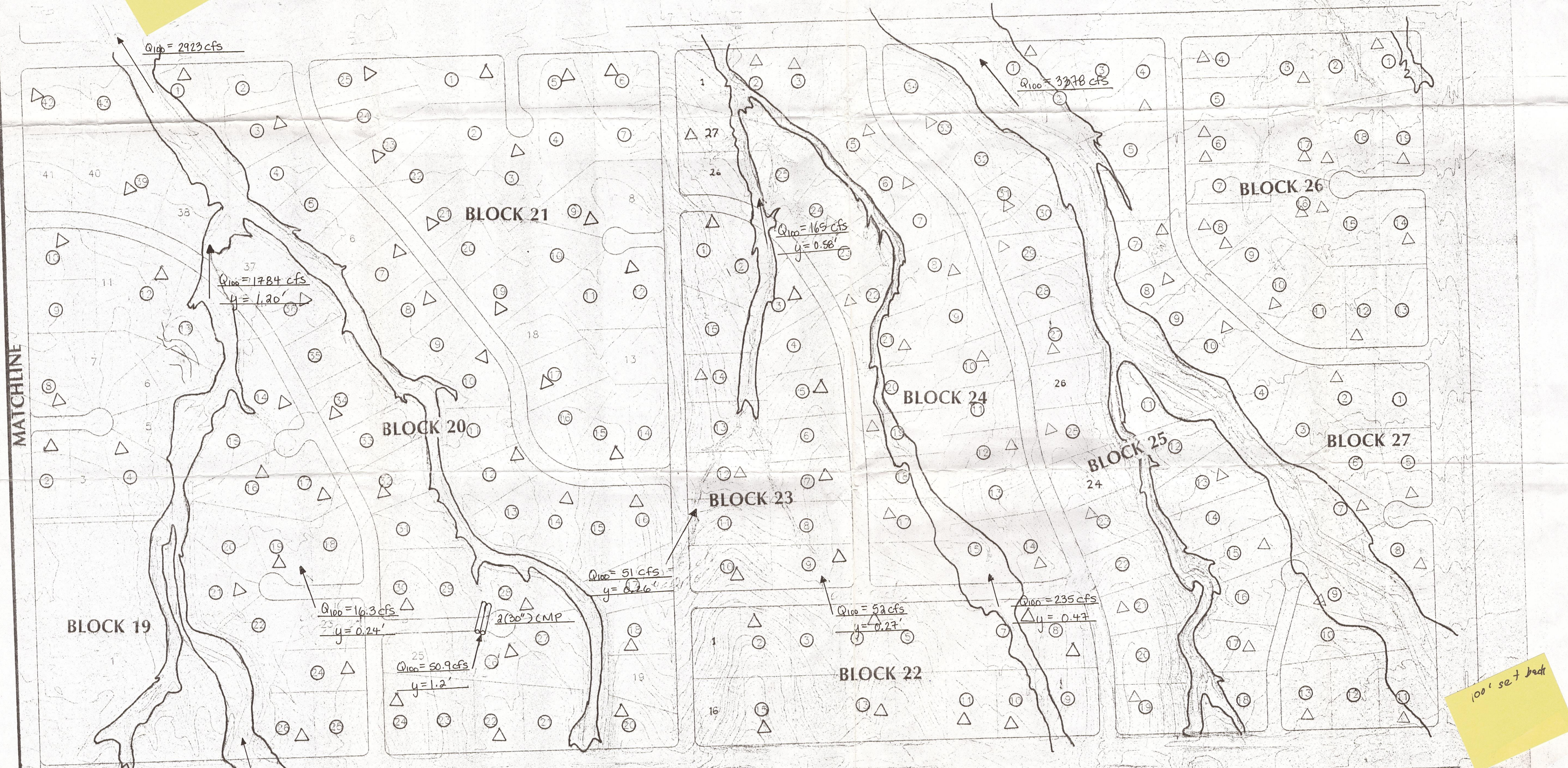


SCALE: 1" = 200'

ICON
SCIENTISTS AND ENGINEERS
ICON CONSULTANTS USA, INC.
1870 W. PRINCE ROAD, TUCSON, ARIZONA 85705
(520) 888-1177 FAX (520) 888-3121
7281717

UNIT 29

UNIT 30

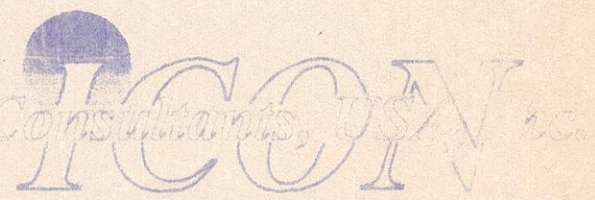
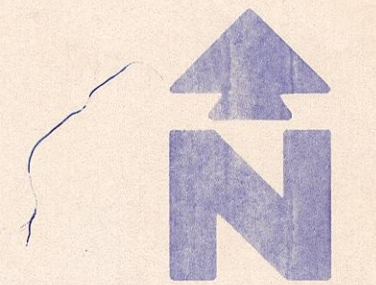
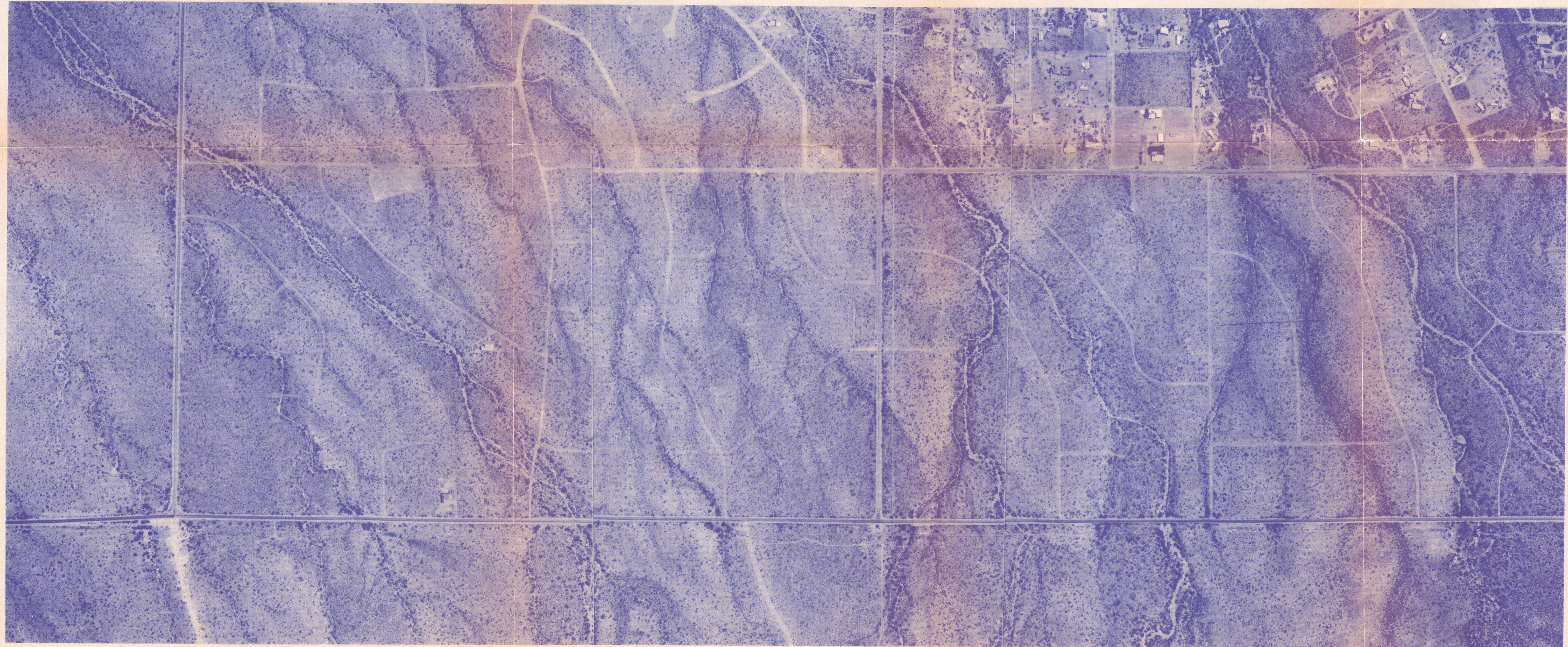


100' setback
w.p. to
confluence

100' set back

CONTOUR INTERVAL = 2'

CONTOUR INTERVAL = 1'



SCIENTISTS AND ENGINEERS
1870 W PRINCE ROAD, TUCSON, ARIZONA 85706
(520) 888-0422 FAX (520) 888-3121

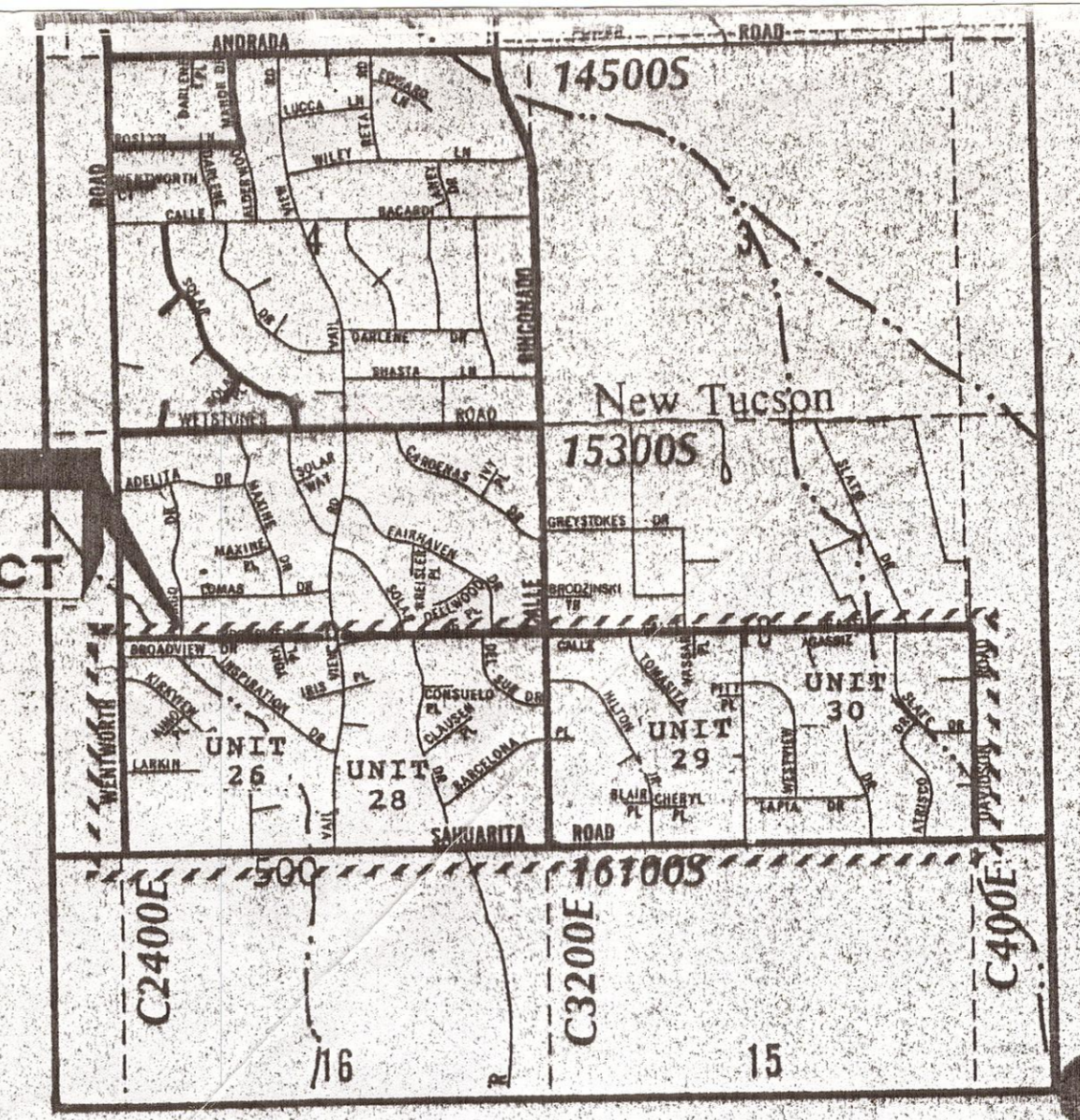
COMPOSITE
GEDA9502
RECEIVED 7/3/85

See me on
 NOT APPROVED: *Handwritten*
 NEED SEAL
 NEED E.H.B.S. STAMPS
 DO NOT FORGET PERMITS

NOT APPROVED.
 PENDING: *
 ① E.H.B.S.
 ② SEAL
 PER TDM -
 3/2/92

NEW TUCSON ALL - WEATHER ACCESS EXHIBIT

THIS PROJECT



LOCATION MAP

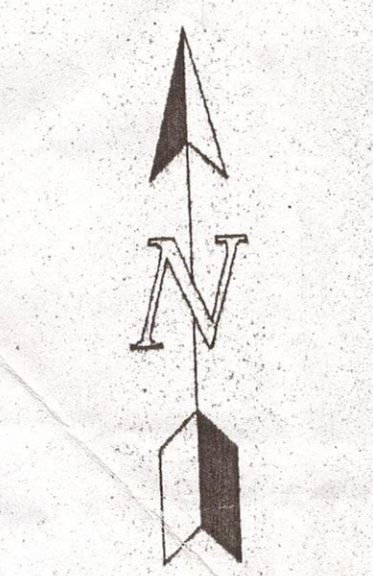
BEING A PORTION OF SECTIONS 9&10,
 T-17-S, R-16-E, G. & S.R. & M.,
 PIMA COUNTY, ARIZONA

ICON

ENGINEERS AND ARCHITECTS
 ICON CONSULTANTS USA, INC.
 1670 N. PRINCE ROAD, TUCSON, ARIZONA 85705
 (602) 888-0422 FAX (602) 888-3121

LEGEND

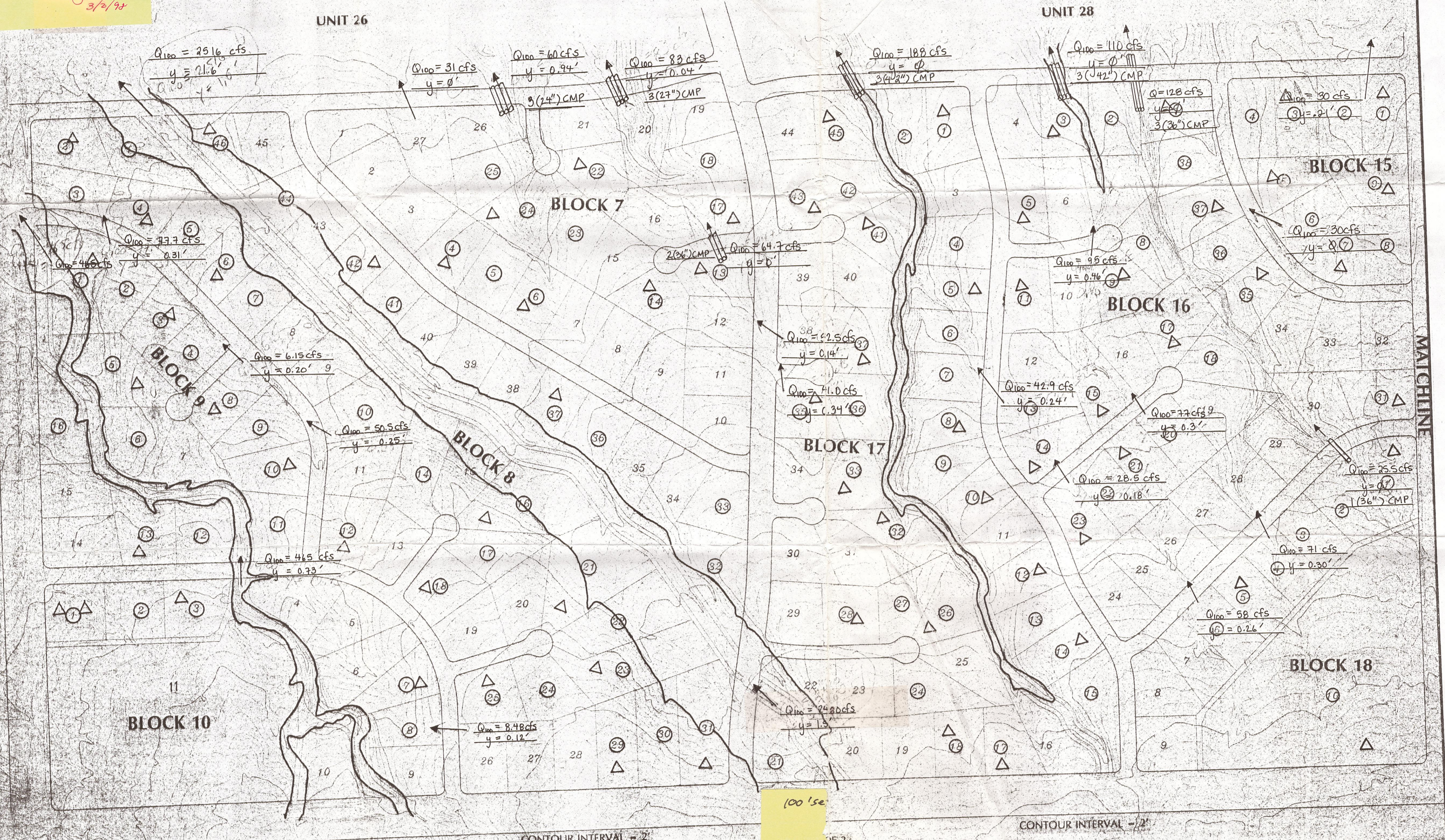
- △ Percolation Test Location
- Lots Owned by Moshe Gedalia, et al
- One Hundred Year Floodplain



SCALE: 1" = 200'

UNIT 26

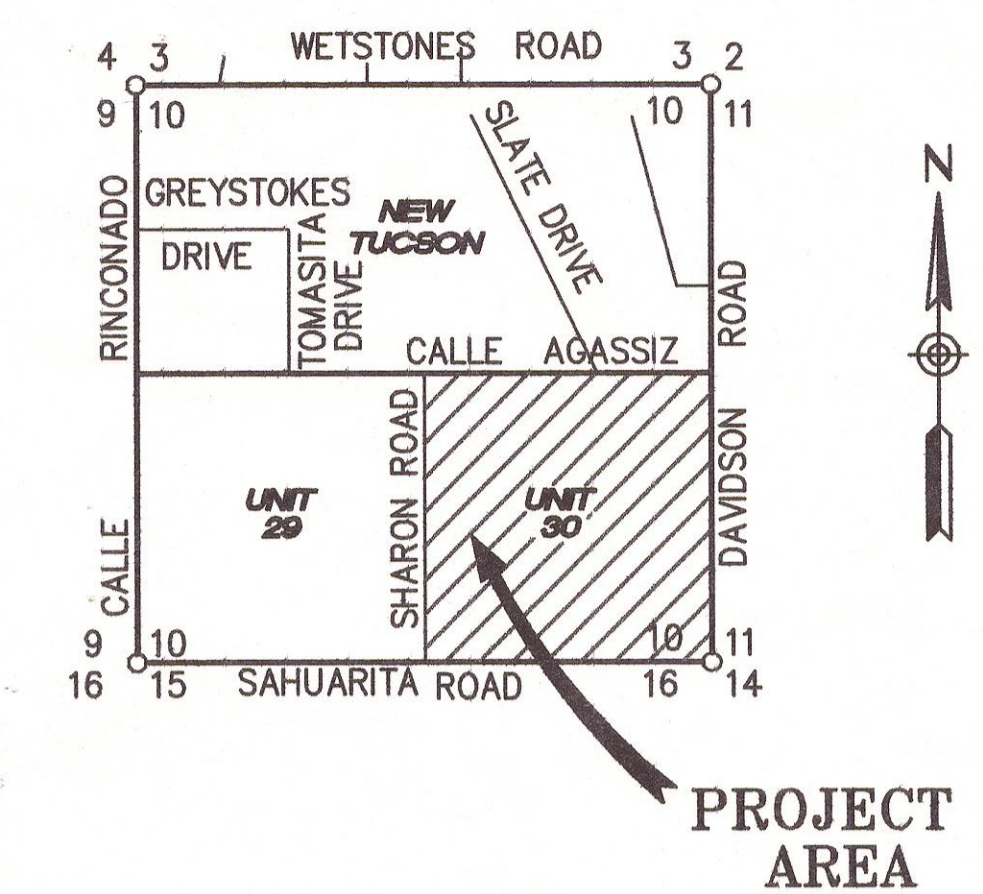
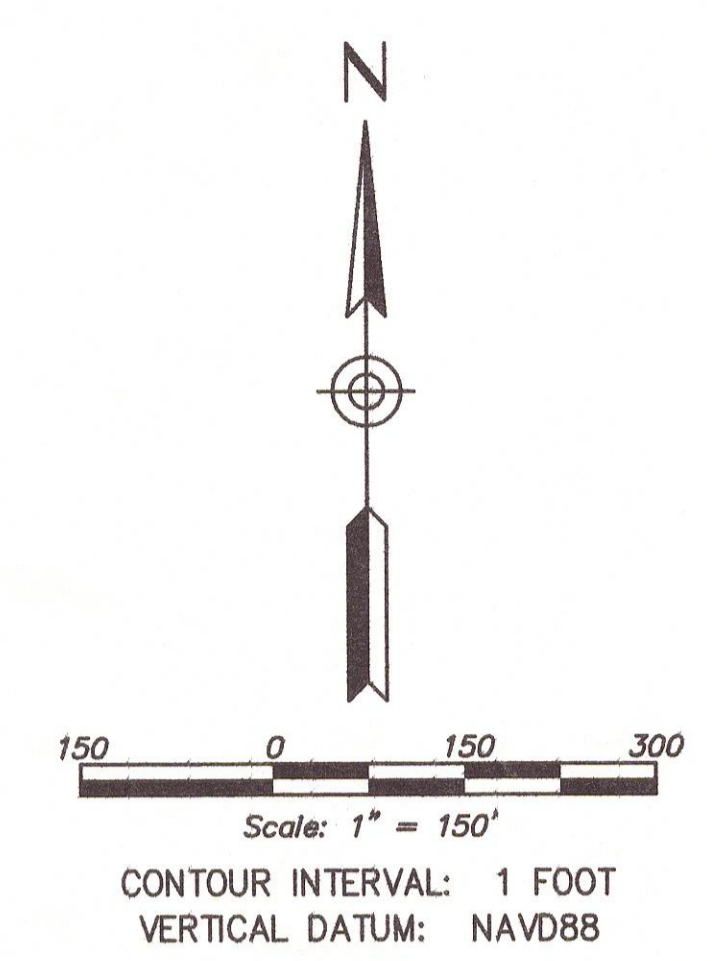
UNIT 28



CONTOUR INTERVAL = 2'

CONTOUR INTERVAL = 2'

100 lse



- LEGEND**
- HEC-RAS SECTION
 - FLOOD PLAIN LIMITS
 - TOP OF BANK
 - EROSION HAZARD SETBACK
 - DEVELOPMENT BLOCK BOUNDARIES

From May 2006 Report

FIGURE 2
NEW TUCSON - UNIT 30
FLOODPLAIN REVISIONS
 Urban Engineering
 877 South Alvernon Way, Tucson, AZ 85711, 520.318.3800

FLOODPLAIN BUILDING LIMITS FOR NEW TUCSON UNIT 30

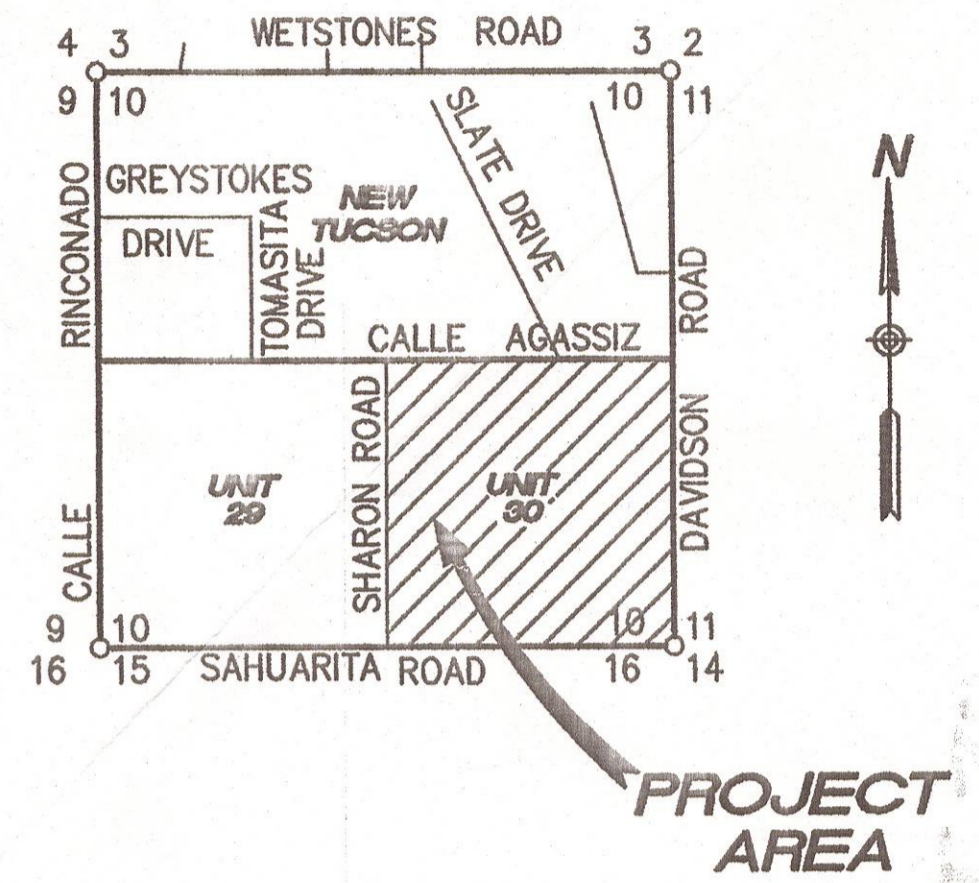
(A PORTION OF PREVIOUSLY APPROVED COUNTY PROJECT No. Co12-96-208 + P1201-303)

BLOCK 22, Lots 1-16 BLOCK 25, Lots 1-34
 BLOCK 23, Lots 1-15 BLOCK 26, Lots 4-19
 BLOCK 24, Lots 1-27 BLOCK 27, Lots 1-13

BOOK 17, PAGE 34
 P1203-307

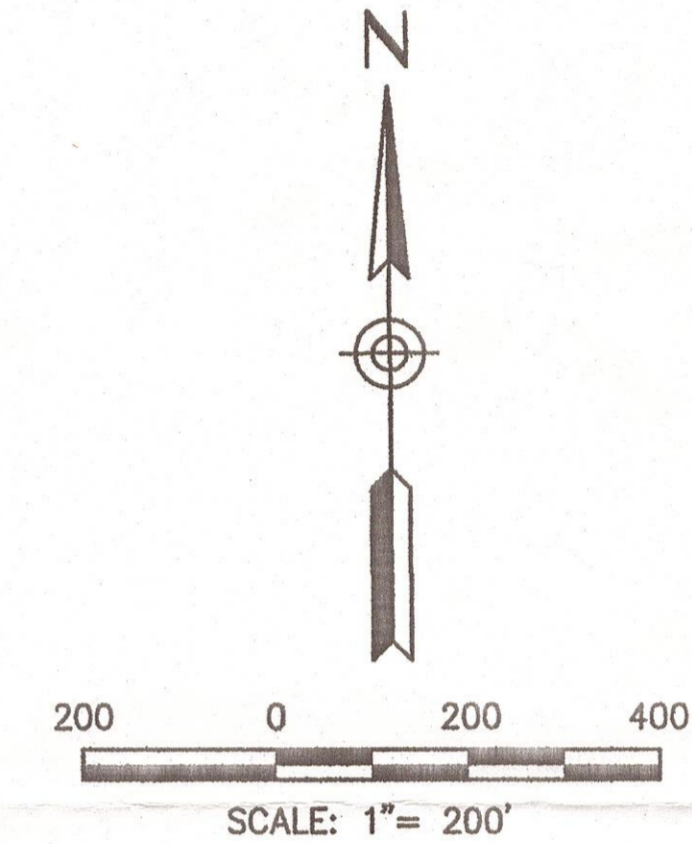


KEY MAP



LOCATION MAP

SECTION 10, T-17-S, R-16-E
 GILA AND SALT RIVER MERIDIAN
 PIMA COUNTY, ARIZONA
 SCALE: 3" = 1 MILE



LEGEND

- FLOOD PLAIN LIMITS
- EROSION HAZARD SETBACK
- BUILDING SETBACKS PER CR-1 ZONING
- TOP OF BANK
- SHEET MATCHLINE
- FL## DENOTES FLOODPLAIN LIMIT TAG

THE BASIS OF ELEVATION IS THE 2" GLO BRASS CAP AT THE SOUTHEAST CORNER OF SECTION 10, T-17-S, R-16-E, SAID ELEVATION BEING 3672.19 (NAVD88).

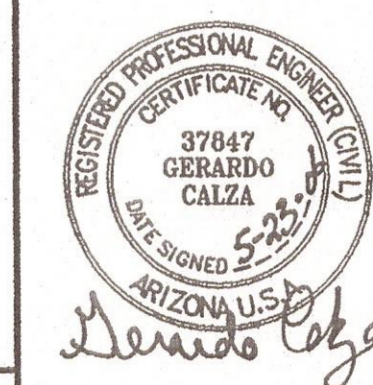
THE BASIS OF BEARING IS THE SOUTH LINE OF THE SOUTH EAST QUARTER OF SECTION 9, AS SHOWN ON THE PLAT OF NEW TUCSON UNIT 28, BOOK 17, PAGE 56, SAID BEARING BEING N89°59'19"E.

APPROVED BY
 FLOODPLAIN MANAGEMENT SECTION
 DATE 5/23/06 BY CDS
 WITH ADDENDUM #1 DATED Revised March 2006
 and ADDENDUM #2 DATED MAY 2006

THESE PLANS ARE THE PROPERTY OF
 URBAN ENGINEERING INC.
 USE OF THE INFORMATION CONTAINED
 IN THIS INSTRUMENT IS FORBIDDEN
 UNLESS WRITTEN CONSENT IS OBTAINED
 FROM URBAN ENGINEERING INC.

Two working days before you dig,
 CALL FOR THE BLUE STAKES
1-800-782-5348
 Blue Stakes Center

SR 05-165



NEW TUCSON - UNIT 30
 FLOODPLAIN
 BUILDING LIMITS

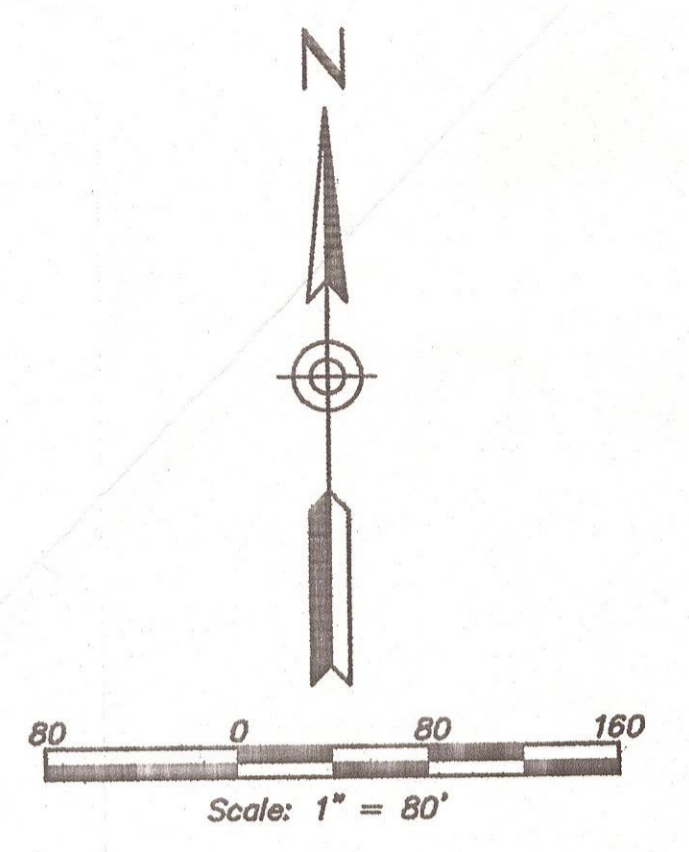
Urban Engineering
 877 S. Alvernon Way
 Tucson, AZ 85711
 520.318.3800

DESIGNED BY: MIR
 DRAWN BY: JAG
 CHECKED BY: GC
 SURVEYED BY:
 DATE: 03/08
 SCALE: H 1" = 200'
 SHEET: 1 OF 5
 JOB No. 0515



FLOODPLAIN LINE TABLE		
LINE No.	LENGTH	BEARING
FL25	77.36	N45°28'13"W
FL26	98.37	N18°09'34"W
FL27	51.77	N71°15'45"E
FL28	43.44	N49°17'25"W
FL29	24.51	N23°45'36"W
FL30	95.59	N10°03'37"W
FL31	37.44	N60°07'55"E
FL32	8.15	N60°07'55"E
FL33	82.92	N05°15'26"W
FL34	49.09	N01°06'08"W
FL35	30.84	N27°44'23"E
FL36	78.08	N20°34'47"E
FL37	36.91	N35°26'40"E
FL38	31.26	N31°06'59"E
FL39	45.97	N15°32'29"E
FL40	70.45	N11°14'22"E
FL41	17.64	N23°32'44"E
FL42	14.28	N13°22'39"W
FL43	23.66	N05°47'59"W
FL44	37.49	N17°37'14"W
FL45	23.88	N30°26'32"W
FL46	30.35	S75°19'35"W
FL47	20.46	N06°24'45"W
FL48	39.27	N30°50'33"W
FL49	26.18	N33°39'15"W
FL50	27.46	N01°10'08"W
FL51	14.46	N22°55'36"W
FL52	48.05	N37°45'53"W
FL53	74.72	N43°51'04"W
FL54	44.01	N48°32'28"W
FL55	11.96	N70°19'44"W
FL56	40.57	N35°18'54"W
FL57	13.81	N19°01'22"W
FL58	42.76	N16°55'17"W
FL59	32.99	N53°24'51"W
FL60	81.65	N54°21'37"W
FL61	53.29	N68°20'55"W
FL62	9.26	N59°20'13"W
FL63	22.53	N36°23'02"W
FL64	36.85	N23°07'45"W
FL65	48.90	N59°41'52"W
FL66	22.61	N52°49'08"W
FL67	28.16	S33°42'29"W
FL68	22.69	S46°37'23"W
FL69	22.17	S25°09'57"W
FL70	54.08	S22°36'18"E
FL71	81.61	S02°01'10"E
FL72	64.79	S08°36'51"E
FL73	112.47	S18°32'24"E
FL74	80.33	S10°27'43"E
FL75	87.27	S06°30'09"E
FL76	79.60	S03°58'51"E
FL77	66.75	S03°44'44"E
FL78	72.93	S07°32'01"W
FL79	13.26	S07°32'01"W
FL80	12.64	S56°02'17"W
FL81	17.96	S77°43'23"W
FL82	90.24	S12°28'09"W
FL83	115.24	S12°39'48"W
FL84	79.80	S04°10'02"W
FL85	37.88	S20°23'14"E
FL86	16.12	S00°10'47"E
FL87	54.22	S89°49'13"W
FL88	15.96	N00°10'47"W
FL89	58.83	N20°30'58"E
FL90	41.47	N06°25'17"E
FL91	17.13	N27°07'30"W
FL92	36.20	N24°01'47"E
FL93	88.02	N11°37'21"E
FL94	61.93	N08°23'23"E
FL95	40.74	N05°40'43"E
FL96	15.72	N69°02'13"W
FL97	15.72	N69°02'13"W
FL98	28.28	N27°25'22"W
FL99	23.08	N17°15'02"E

FLOODPLAIN LINE TABLE		
LINE No.	LENGTH	BEARING
FL100	49.64	N72°41'26"E
FL101	45.79	N57°23'43"E
FL102	143.48	N04°02'30"W
FL103	34.02	N35°19'26"W
FL104	16.12	N33°00'17"E
FL105	50.83	N30°56'09"W
FL106	17.03	N76°32'37"E
FL107	68.50	N03°49'35"W
FL108	34.36	N46°27'54"W
FL109	26.81	N00°34'01"E
FL110	30.03	N24°27'49"W
FL111	127.36	N05°22'54"W
FL112	21.68	N69°40'58"W
FL113	37.27	N37°33'14"E
FL114	21.81	N88°27'55"W
FL115	28.67	N17°23'29"E
FL116	32.68	N07°40'55"W
FL117	57.18	N12°22'13"E
FL118	40.20	N53°35'16"W
FL119	37.18	N44°10'50"W
FL120	19.35	N05°18'41"E
FL121	55.41	N37°12'48"W
FL122	105.03	N51°31'10"W
FL123	43.82	S12°42'06"W
FL124	42.71	S34°58'37"W
FL125	30.86	S16°28'19"E
FL126	63.27	S50°42'07"E
FL127	38.55	S39°26'25"E
FL128	39.76	S61°58'37"E
FL129	25.59	S45°59'26"E
FL130	29.85	S20°14'47"E
FL131	55.10	S51°04'04"E
FL132	60.17	S61°49'47"E
FL133	42.88	S55°02'31"E
FL134	23.58	S28°33'55"E
FL135	16.23	S72°54'53"E
FL136	12.51	S39°25'21"E
FL137	53.04	S28°12'12"E
FL138	21.89	S44°12'24"E
FL139	17.29	S26°58'56"E
FL140	29.93	S39°03'43"E
FL141	92.57	S47°45'34"E
FL142	26.04	S41°12'18"E
FL143	39.38	S31°31'04"E
FL144	34.59	S09°06'59"E
FL145	31.48	S23°52'50"E
FL146	36.50	S54°20'00"E
FL147	16.72	S46°09'15"E
FL148	25.98	S31°16'46"E
FL149	52.09	S22°35'58"E
FL150	18.09	S19°09'17"W
FL151	25.62	S06°51'34"E
FL152	8.09	S43°23'50"W
FL153	51.38	S04°05'09"W
FL154	8.34	S48°50'07"W
FL155	40.14	S12°44'48"W
FL156	57.19	S18°41'03"W
FL157	13.96	S85°24'11"W
FL158	77.49	S23°49'24"W
FL159	24.28	S52°28'59"E
FL160	74.44	S65°29'31"E
FL161	37.40	S29°11'57"W
FL162	36.67	S67°05'42"W
FL163	20.69	S59°09'01"W
FL164	81.59	S01°43'32"W
FL165	19.94	S54°10'35"E
FL166	23.66	S54°10'35"E
FL167	26.44	S30°26'34"E
FL168	14.09	S05°32'25"E
FL169	58.63	S21°06'56"W
FL170	39.47	S05°35'20"W
FL171	43.89	S45°25'56"E
FL172	39.05	S30°36'29"E
FL173	74.43	S42°56'20"E
FL174	55.21	S27°08'04"E



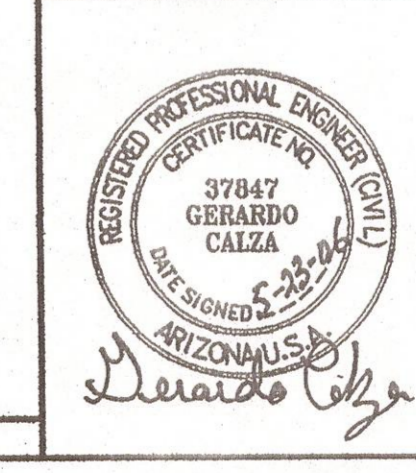
FP, EHSB changed per as-built docs by Salvador Garcia both sealed (see attached) 4/17/07

Two working days before you dip. CALL FOR THE BLUE STAKES
1-800-782-5348
 Blue Stake Center

THESE PLANS ARE THE PROPERTY OF URBAN ENGINEERING INC. USE OF THE INFORMATION CONTAINED IN THIS INSTRUMENT IS FORBIDDEN UNLESS WRITTEN CONSENT IS OBTAINED FROM URBAN ENGINEERING INC.

No. DATE: REVISION: BY: CKD: APPR:

SR 05-165



NEW TUCSON - UNIT 30
FLOODPLAIN BUILDING LIMITS
 Urban Engineering
 877 S. Alvernon Way
 Tucson, AZ 85711
 520.318.3800

DESIGNED BY: MIR
 DRAWN BY: JAG
 CHECKED BY: GC
 SURVEYED BY: LPD
 DATE: 03/06
 SCALE: H 1" = 80'
 SHEET: **2** of **5**
 JOB No. 05151

APPROVED BY FLOODPLAIN MANAGEMENT SECTION DATE 5/23/06 BY: CUSP



Scale: 1" = 40'
 CONTOUR INTERVAL: 1'

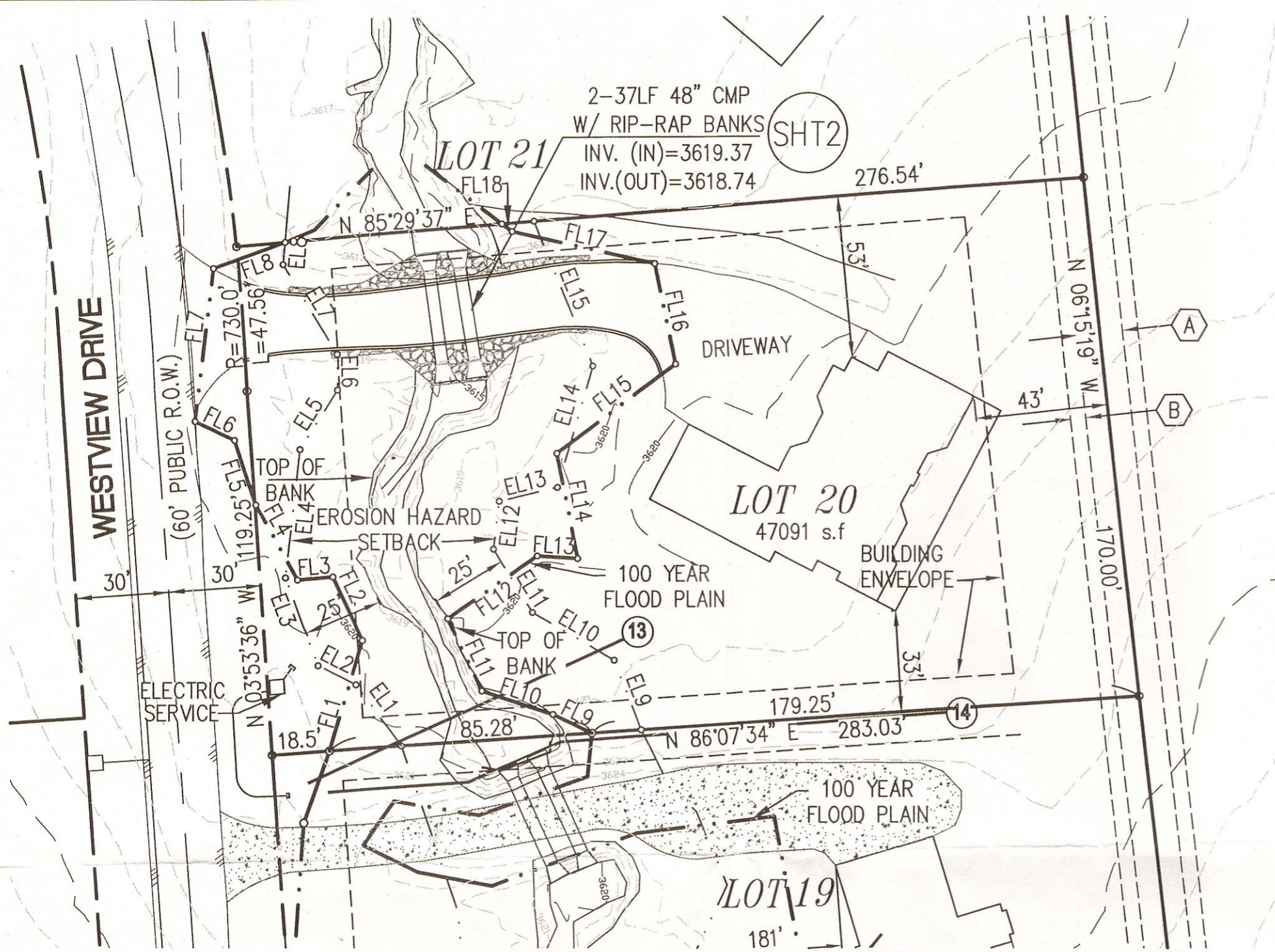


FLOOD LINE TABLE		
LINE No.	LENGTH	BEARING
FL1	37.55	N16°23'49"E
FL2	22.88	N24°31'36"W
FL3	11.47	S85°26'55"W
FL4	28.14	N29°06'07"W
FL5	22.29	N18°11'01"W
FL6	14.16	N63°59'15"W
FL7	50.48	N06°45'06"E
FL8	24.76	N70°17'10"E
FL9	14.07	N64°19'21"W
FL10	24.41	N71°36'54"W
FL11	26.10	N25°22'07"W
FL12	35.76	N54°58'15"E
FL13	13.11	S86°11'32"E
FL14	35.02	N11°06'30"W
FL15	48.32	N52°57'52"E
FL16	33.29	N11°37'11"W
FL17	47.74	N77°11'58"W
FL18	4.07	N52°39'38"W

EROSION HAZARD LINE TABLE			EROSION HAZARD LINE TABLE		
LINE No.	LENGTH	BEARING	LINE No.	LENGTH	BEARING
EL1	24.83	N36°21'18"W	EL8	7.30	N04°51'39"E
EL2	13.71	N62°28'31"W	EL9	24.38	N21°02'04"W
EL3	30.66	N20°12'40"W	EL10	30.85	N59°28'38"W
EL4	42.18	N06°24'42"E	EL11	24.27	N31°37'42"W
EL5	22.74	N32°17'13"E	EL12	15.73	N07°00'35"E
EL6	11.69	N00°43'15"W	EL13	19.49	N76°24'11"E
EL7	34.38	N30°37'35"W	EL14	41.12	N16°13'23"E
			EL15	50.91	N22°06'09"W

KEYNOTES

- (A) 15' PUBLIC UTILITY EASEMENT PER BOOK 17 PAGE 51
- (B) 5' PUBLIC OVERHEAD EASEMENT PER BOOK 17, PAGE 51



AS-BUILT
NEW TUCSON
UNIT 30, BLOCK 24, LOT 20

DESIGN: WAR DRAWN: CME CHECK: SG
 DATE: 04/07 JOB No. 04092 SHEET 1 of 1

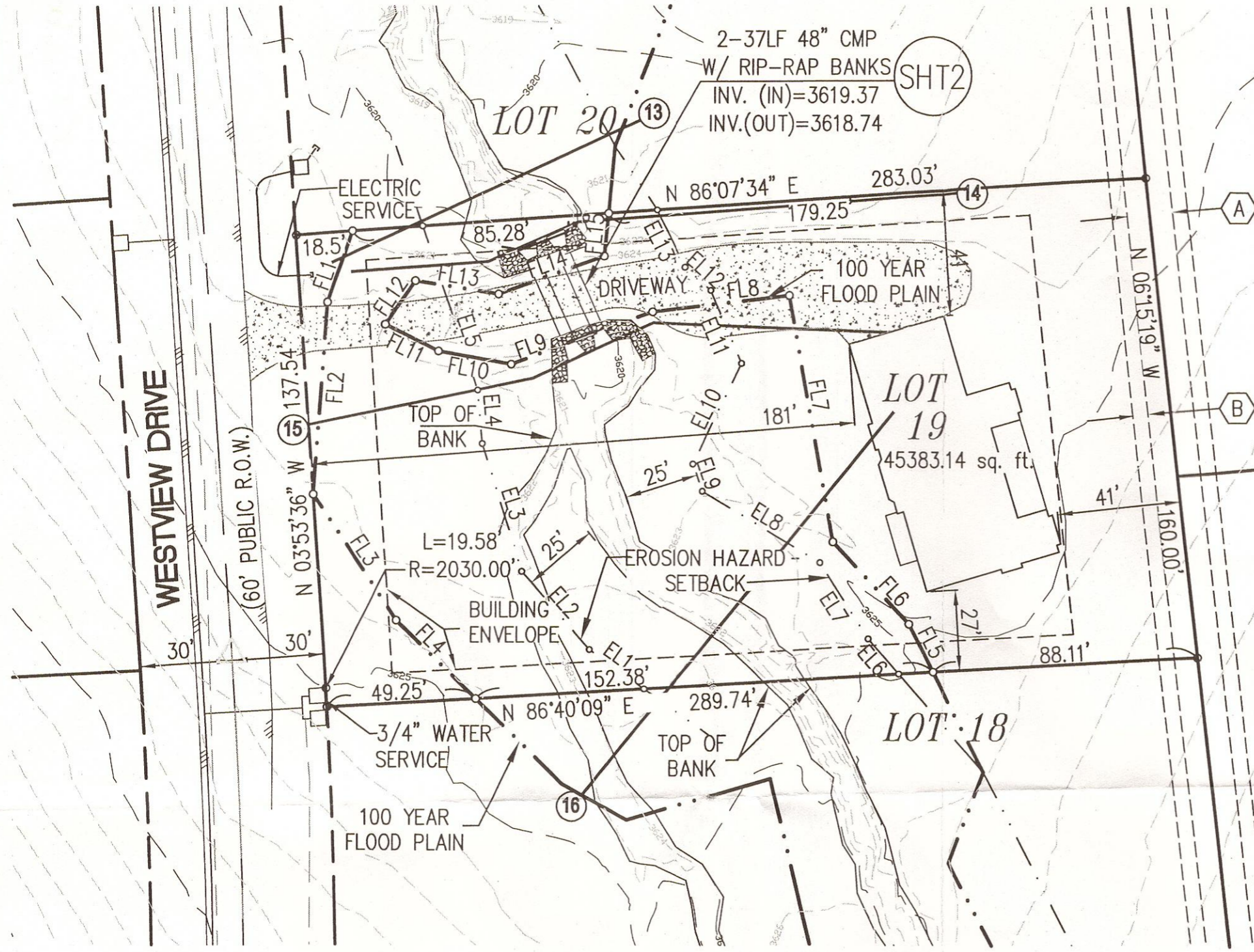


Scale: 1" = 40'
CONTOUR INTERVAL: 1'



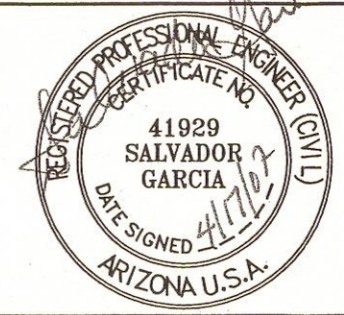
FLOOD LINE TABLE		
LINE No.	LENGTH	BEARING
FL1	24.89	S19°17'32"W
FL2	64.00	S03°58'24"W
FL3	50.10	S33°21'41"E
FL4	37.02	S45°27'27"E
FL5	17.87	N27°08'04"W
FL6	37.21	N42°56'20"W
FL7	83.11	N10°15'53"W
FL8	45.64	S83°06'32"W
FL9	50.29	S69°47'13"W
FL10	24.40	N79°31'59"W
FL11	19.73	N63°17'55"W
FL12	17.51	N34°24'29"E
FL13	27.86	S80°38'59"E
FL14	37.52	N70°28'18"E
FL15	14.29	N05°35'20"E

EROSION HAZARD LINE TABLE		
LINE No.	LENGTH	BEARING
EL1	22.48	N54°30'18"W
EL2	34.42	N41°12'22"W
EL3	44.43	N17°23'18"W
EL4	17.85	N05°04'30"W
EL5	57.33	N18°37'48"W
EL6	15.52	N41°10'03"W
EL7	30.00	N32°41'28"W
EL8	45.76	N58°45'50"W
EL9	9.56	N19°09'16"W
EL10	37.02	N25°37'25"E
EL11	26.24	N22°56'22"W
EL12	11.47	N48°01'11"W
EL13	21.07	N26°11'23"W



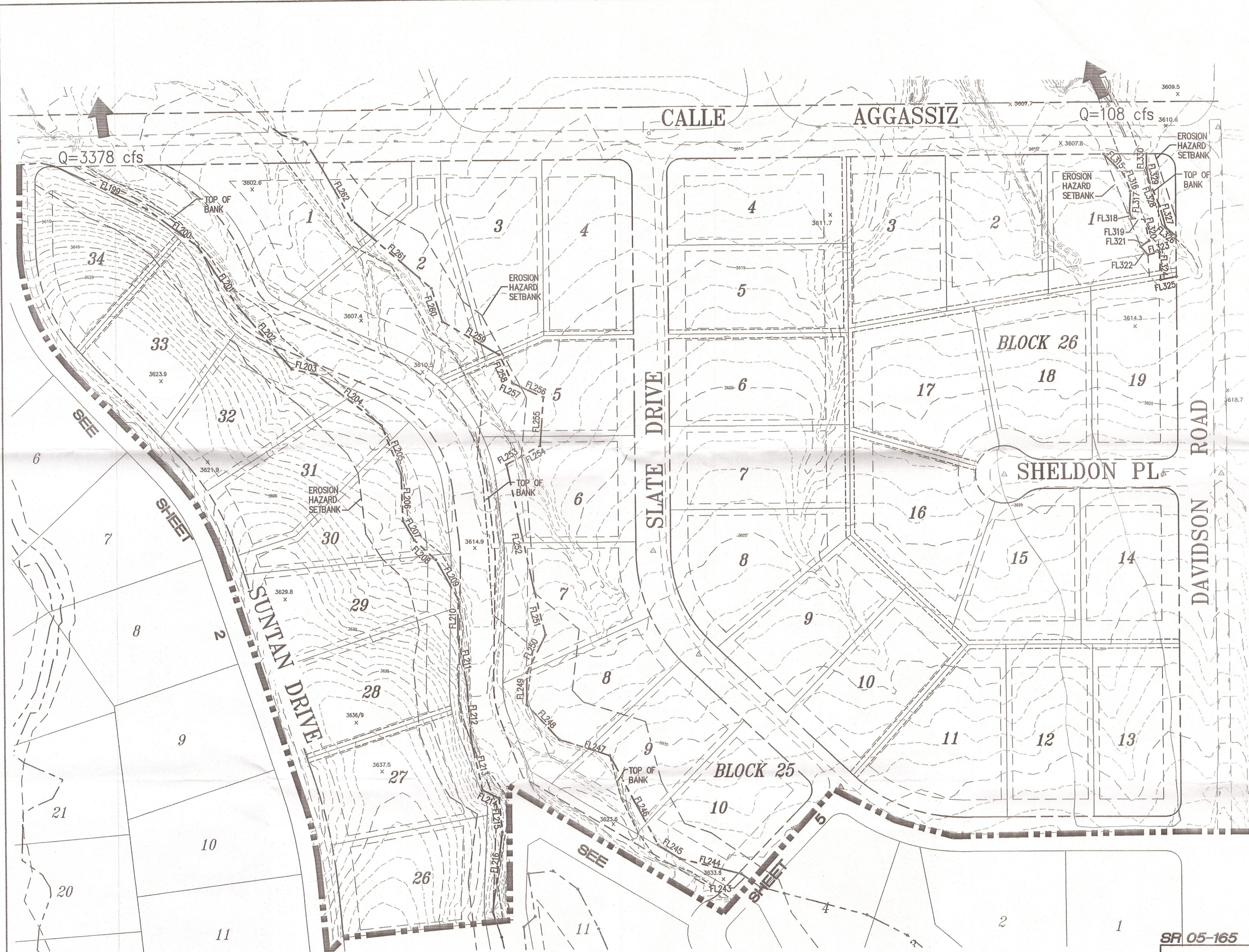
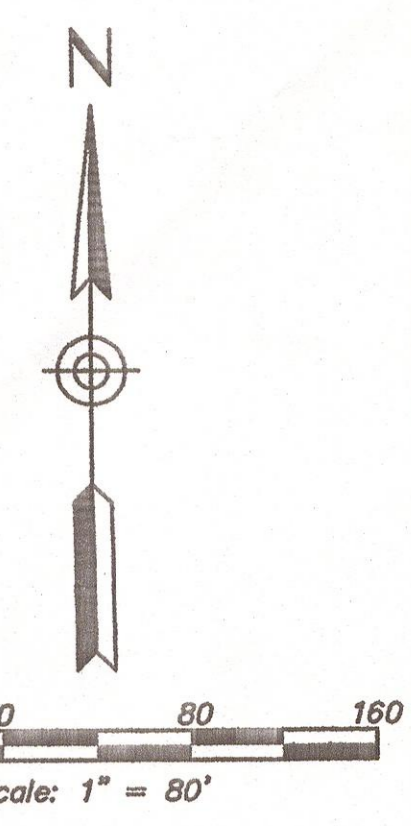
KEYNOTES

- (A) 15' PUBLIC UTILITY EASEMENT PER BOOK 17 PAGE 51
- (B) 5' PUBLIC OVERHEAD EASEMENT PER BOOK 17, PAGE 51



AS-BUILT
NEW TUCSON
UNIT 30, BLOCK 24, LOT 19

DESIGN: WAR DRAWN: WAR CHECK: SG
DATE: 04/07 JOB No. 04092 SHEET 1 of 2



FLOODPLAIN LINE TABLE		
LINE No.	LENGTH	BEARING
FL199	174.39	S64°16'37"E
FL200	110.16	S53°14'46"E
FL201	128.53	S32°51'20"E
FL202	140.63	S40°03'46"E
FL203	44.54	S76°41'42"E
FL204	141.97	S51°08'46"E
FL205	90.70	S21°25'53"E
FL206	81.42	S01°42'45"E
FL207	39.08	S30°18'56"E
FL208	50.45	S46°54'41"E
FL209	78.55	S28°42'14"E
FL210	65.94	S00°55'50"W
FL211	84.32	S10°09'41"E
FL212	100.02	S03°59'37"E
FL213	85.99	S12°37'18"E
FL214	31.42	S63°32'36"E
FL215	59.14	S04°55'26"E
FL216	139.42	S07°10'42"W
FL217	40.31	N54°24'59"W
FL218	109.13	N75°41'03"W
FL219	44.42	N57°14'23"W
FL220	176.62	N27°51'14"W
FL221	91.11	N71°55'03"W
FL222	82.51	N42°29'36"W
FL223	55.85	N00°46'30"E
FL224	72.98	N26°45'59"E
FL225	74.90	N13°56'05"W
FL226	227.85	N11°54'51"W
FL227	29.56	N60°28'40"E
FL228	37.46	N60°28'40"E
FL229	84.64	N04°04'42"E
FL230	43.17	N65°03'43"W
FL231	15.18	N65°03'43"W
FL232	54.00	N24°19'33"W
FL233	113.88	N59°08'49"W
FL234	61.24	N17°38'08"W
FL235	180.76	N48°44'16"W
FL236	115.76	N29°19'36"W
FL237	49.34	S44°12'30"E
FL238	31.27	S20°52'03"E
FL239	37.61	S02°39'09"W
FL240	10.28	S23°58'37"E
FL241	22.06	S83°39'51"E
FL242	36.79	S11°31'51"E
FL243	17.48	S56°19'18"W
FL244	18.92	S41°08'27"E
FL245	20.34	N77°27'26"E
FL246	47.91	S01°58'21"E
FL247	27.63	N78°52'44"W
FL248	22.42	N51°12'04"W
FL249	38.12	N15°09'12"W
FL250	46.31	N22°47'39"W
FL251	24.14	N11°06'42"W
FL252	24.56	N00°39'20"E

APPROVED BY
 FLOODPLAIN MANAGEMENT SECTION
 DATE: 5/23/06 BY: GCS

SR 05-165

THESE PLANS ARE THE PROPERTY OF
 URBAN ENGINEERING INC.
 USE OF THE INFORMATION CONTAINED
 IN THIS INSTRUMENT IS FORBIDDEN
 UNLESS WRITTEN CONSENT IS OBTAINED
 FROM URBAN ENGINEERING INC.

Two working days before you dig,
 CALL FOR THE BLUE STAKES
1-800-782-5348
 Blue Stakes Center

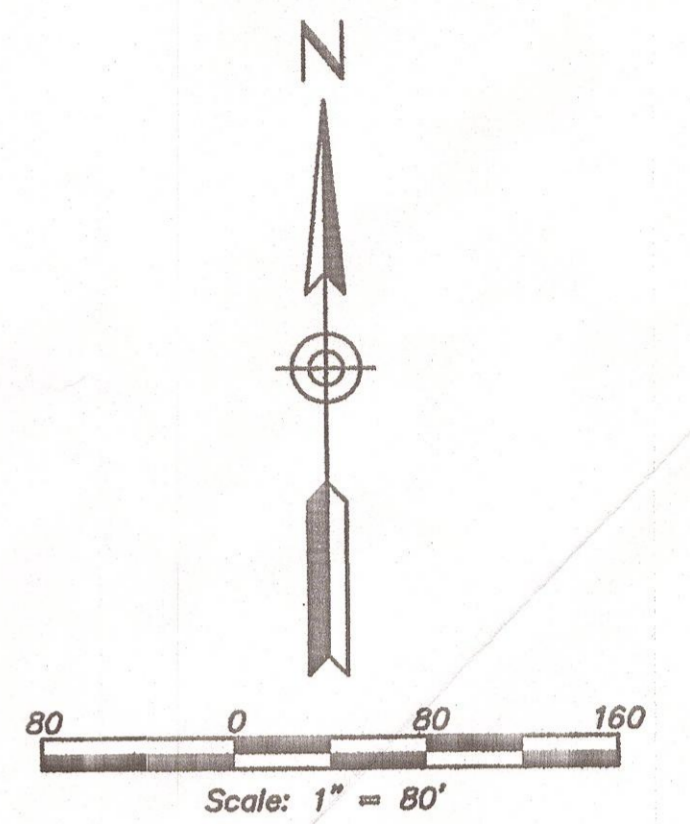
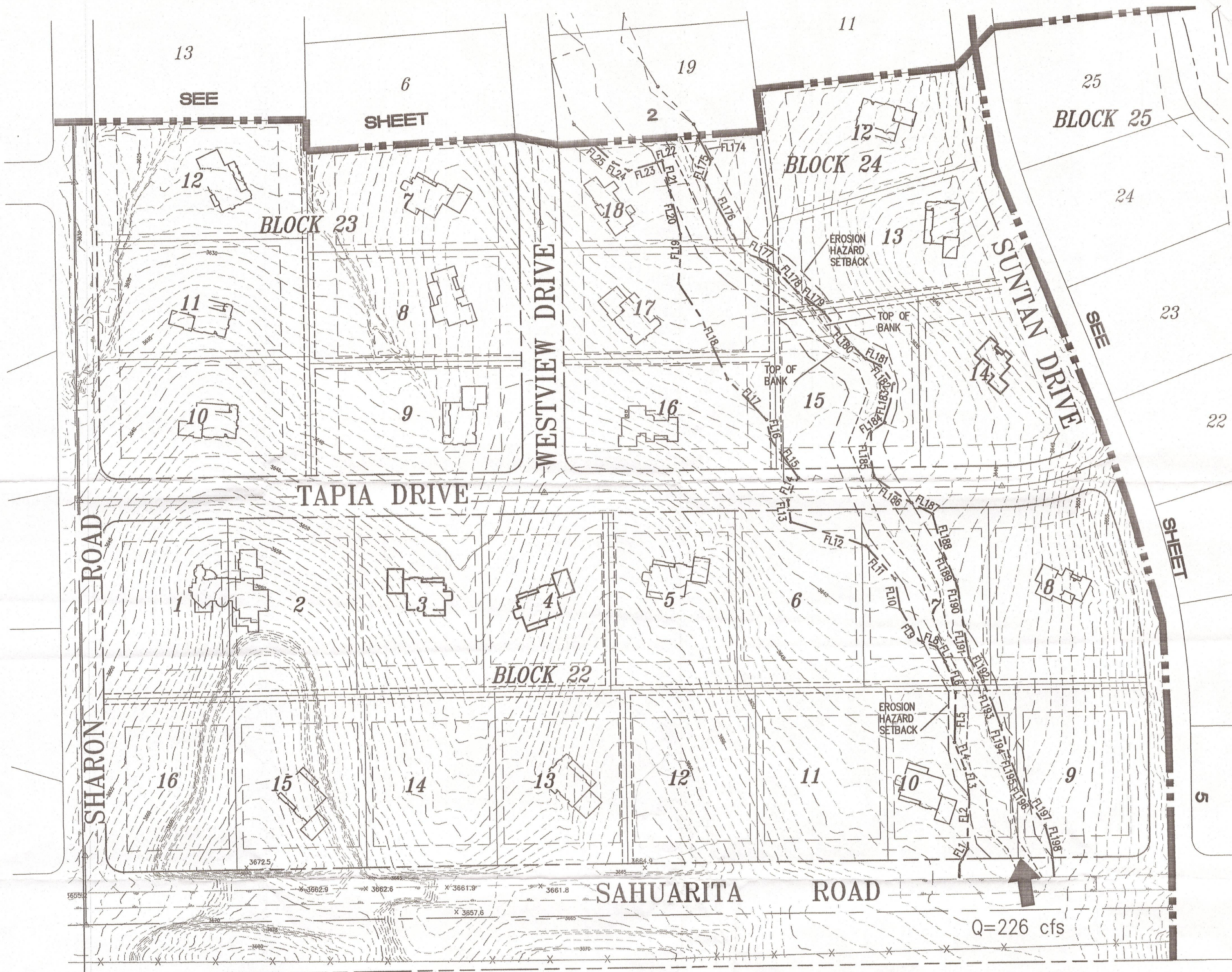


NEW TUCSON - UNIT 30
FLOODPLAIN
BUILDING LIMITS

Urban Engineering
 877 S. Alvernon Way
 Tucson, AZ 85711
 520.318.3800

DESIGNED BY: MIR
 DRAWN BY: JAG
 CHECKED BY: GC
 SURVEYED BY:
 DATE: 03/06
 SCALE:
 H 1" = 80'
 SHEET:
3 of 5
 JOB No. 05151

No. DATE: REVISION: BY: CKD: APPR:



FLOODPLAIN LINE TABLE		
LINE No.	LENGTH	BEARING
FL1	16.68	N26°29'41"E
FL2	77.54	N01°14'28"E
FL3	36.64	N07°06'28"W
FL4	40.56	N20°11'54"W
FL5	71.13	N01°48'19"E
FL6	46.88	N17°44'19"W
FL7	24.17	N28°21'43"W
FL8	20.87	N70°02'52"W
FL9	57.19	N33°41'12"W
FL10	44.68	N09°05'47"W
FL11	61.95	N40°37'14"W
FL12	112.30	N71°23'48"W
FL13	31.31	N07°03'45"W
FL14	35.97	N25°11'44"E
FL15	67.83	N34°55'06"W
FL16	28.17	N11°32'32"W
FL17	79.97	N43°12'11"W
FL18	155.20	N26°04'41"W
FL19	70.32	N03°02'44"E
FL20	63.23	N13°22'16"W
FL21	44.58	N13°22'16"W
FL22	8.08	S73°42'59"W
FL23	41.56	S73°42'59"W
FL24	24.81	N60°50'17"W
FL25	77.36	N45°28'13"W
FL174	55.21	S27°08'04"E
FL175	32.33	S20°49'08"W
FL176	107.64	S27°35'22"E
FL177	54.85	S59°52'34"E
FL178	52.62	S40°38'59"E
FL179	45.81	S52°24'03"E
FL180	90.08	S40°52'36"E
FL181	22.38	S63°10'06"E
FL182	32.50	S37°04'15"E
FL183	57.25	S13°43'29"W
FL184	23.63	S56°36'23"W
FL185	64.80	S03°15'13"E
FL186	64.73	S54°25'35"E
FL187	33.73	S61°14'43"E
FL188	63.44	S13°30'04"E
FL189	36.49	S25°53'54"E
FL190	68.33	S10°39'31"E
FL191	45.11	S07°23'33"E
FL192	39.95	S29°20'14"E
FL193	67.96	S20°59'34"E
FL194	46.41	S14°54'11"E
FL195	49.88	S19°36'34"E
FL196	20.39	S32°21'09"E
FL197	41.17	S32°21'09"E
FL198	46.64	S11°58'33"E

APPROVED BY
FLOODPLAIN MANAGEMENT SECTION
DATE 5/23/06 BY CES

THIS PLAN IS THE PROPERTY OF
URBAN ENGINEERING INC.
USE OF THE INFORMATION CONTAINED
HEREIN IS FOR THE PROJECT AND SITE
SPECIFICALLY IDENTIFIED IN THE
TITLE OF THIS INSTRUMENT AND IS NOT TO BE
REPRODUCED OR TRANSMITTED IN ANY FORM
OR BY ANY MEANS, ELECTRONIC OR MECHANICAL,
INCLUDING PHOTOCOPYING, RECORDING, OR BY
ANY INFORMATION STORAGE AND RETRIEVAL
SYSTEM, WITHOUT THE WRITTEN CONSENT OF
URBAN ENGINEERING INC.

Two working days before you die.
CALL FOR THE BLUE STARS
1-800-782-5348
Blue Star Center

SR 05-165

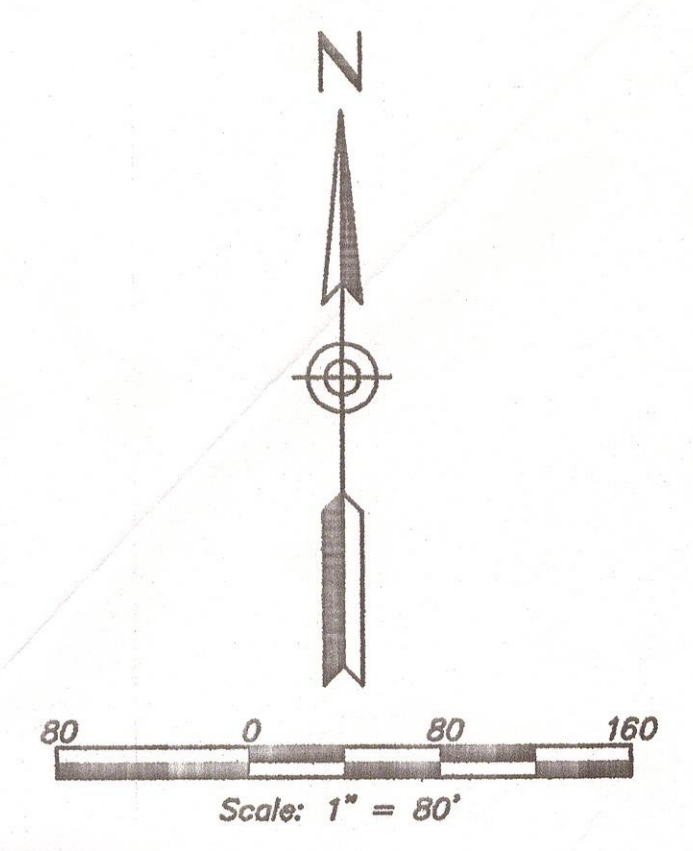
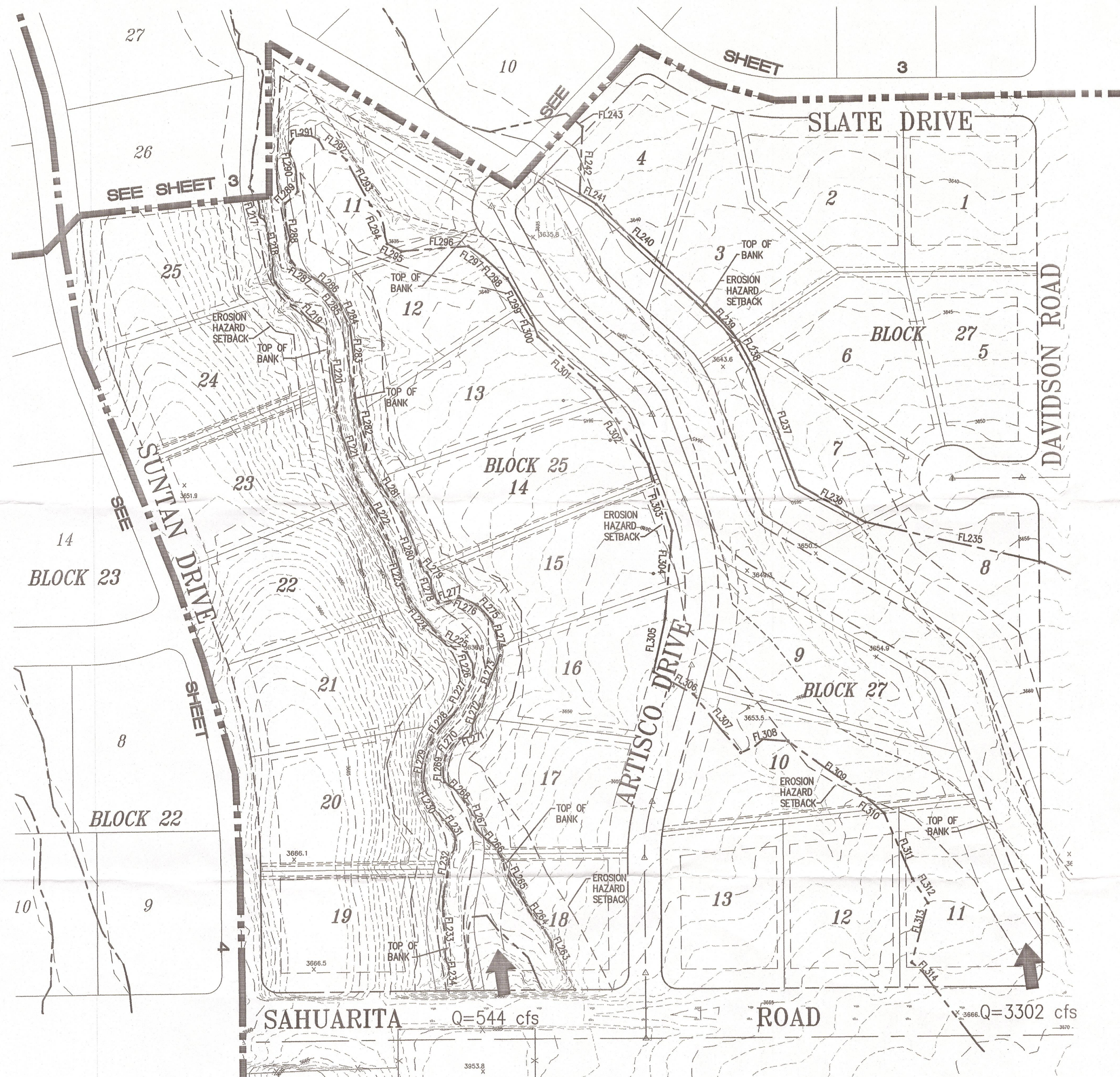


**NEW TUCSON - UNIT 30
FLOODPLAIN
BUILDING LIMITS**

Urban Engineering
877 S. Alvernon Way
Tucson, AZ 85711
520.318.3800

DESIGNED BY:	MIR
DRAWN BY:	JAG
CHECKED BY:	GC
SURVEYED BY:	LPD
DATE:	03/06
SCALE:	H 1" = 80'
SHEET:	4 OF 5
JOB No.	05151

No. DATE: REVISION: BY: CKD: APPR:



FLOODPLAIN LINE TABLE		
LINE No.	LENGTH	BEARING
FL217	46.20	S18°57'51"E
FL218	105.91	S12°33'31"W
FL219	114.37	S43°52'49"E
FL220	116.58	S05°17'21"E
FL221	107.52	S16°49'02"E
FL222	122.88	S26°59'34"E
FL223	76.48	S17°01'20"E
FL224	74.40	S37°45'59"E
FL225	46.90	S59°33'56"E
FL226	39.23	S15°41'47"E
FL227	65.26	S28°16'14"W
FL228	54.16	S37°55'40"W
FL229	60.64	S13°33'46"W
FL230	65.70	S27°51'35"E
FL231	31.07	S34°41'08"E
FL232	94.61	S11°01'16"W
FL233	94.04	S02°00'53"E
FL234	48.50	S05°01'24"E
FL235	277.75	N76°48'50"W
FL236	115.57	N59°58'03"W
FL237	189.26	N20°55'44"W
FL238	49.04	N27°45'25"W
FL239	74.07	N41°20'34"W
FL240	225.68	N47°06'52"W
FL241	29.52	N57°02'34"W
FL242	101.84	N74°57'26"W
FL243	31.36	N50°12'28"W
FL263	106.08	N27°11'30"W
FL264	41.44	N35°28'44"W
FL265	77.70	N26°47'45"W
FL266	60.06	N39°32'25"W
FL267	42.25	N19°30'35"W
FL268	48.82	N45°30'14"W
FL269	39.75	N02°41'23"E
FL270	33.66	N40°00'53"E
FL271	17.55	N68°08'09"E
FL272	61.80	N19°49'26"E
FL273	66.60	N21°30'42"E
FL274	57.97	N15°30'36"W

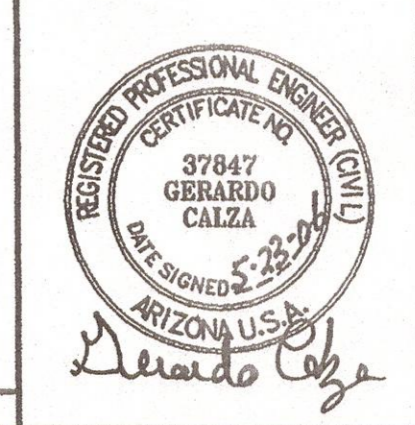
FLOODPLAIN LINE TABLE		
LINE No.	LENGTH	BEARING
FL275	29.17	N40°33'09"W
FL276	30.24	N65°55'37"W
FL277	33.05	S72°51'21"W
FL278	49.15	N19°52'52"W
FL279	13.67	N42°04'07"W
FL280	87.12	N19°14'38"W
FL281	92.53	N32°59'01"W
FL282	127.71	N09°41'45"W
FL283	81.89	N03°05'47"W
FL284	32.94	N21°50'35"W
FL285	21.61	N36°26'28"W
FL286	32.15	N46°49'09"W
FL287	48.89	N55°11'19"W
FL288	90.64	N04°54'04"W
FL289	26.27	N47°35'09"E
FL290	75.77	N08°12'20"W
FL291	42.49	N84°06'24"E
FL292	53.11	S52°51'18"E
FL293	77.52	S27°19'16"E
FL294	64.50	S22°47'21"E
FL295	24.16	N50°12'28"W
FL296	101.40	N85°53'14"E
FL297	26.65	S54°45'23"E
FL298	50.17	S47°08'04"E
FL299	70.58	S30°24'30"E
FL300	29.90	S19°48'27"E
FL301	115.73	S47°06'54"E
FL302	141.31	S 35°3'8" E
FL303	108.80	S18°57'42"E
FL304	133.71	S04°45'09"W
FL305	83.53	S12°28'14"W
FL306	69.75	S60°12'57"E
FL307	113.82	S38°17'31"E
FL308	73.80	N76°30'47"E
FL309	137.01	S52°48'54"E
FL310	44.77	S52°48'54"E
FL311	108.90	S22°35'13"E
FL312	44.37	S31°41'34"E
FL313	93.34	S15°28'53"W
FL314	50.04	S42°02'05"E

APPROVED BY
 FLOODPLAIN MANAGEMENT SECTION
 DATE: 5/23/06

THESE PLANS ARE THE PROPERTY OF
 URBAN ENGINEERING INC.
 USE OF THE INFORMATION CONTAINED
 IN THIS INSTRUMENT IS FORBIDDEN
 UNLESS WRITTEN CONSENT IS OBTAINED
 FROM URBAN ENGINEERING INC.

Two working days before you dig
 CALL FOR THE BLUE STAKES
1-800-782-5348
 Blue Stakes Center

SR 05-165



NEW TUCSON - UNIT 30
FLOODPLAIN
BUILDING LIMITS

Urban Engineering
 877 S. Alvernon Way
 Tucson, AZ 85711
 520.318.3800

DESIGNED BY: MIR
 DRAWN BY: JAG
 CHECKED BY: GC
 SURVEYED BY: ---
 DATE: 03/06
 SCALE: H 1" = 80'
 SHEET: **5** OF **5**
 JOB No. 05151

No. DATE REVISION BY: CKD: APPR: