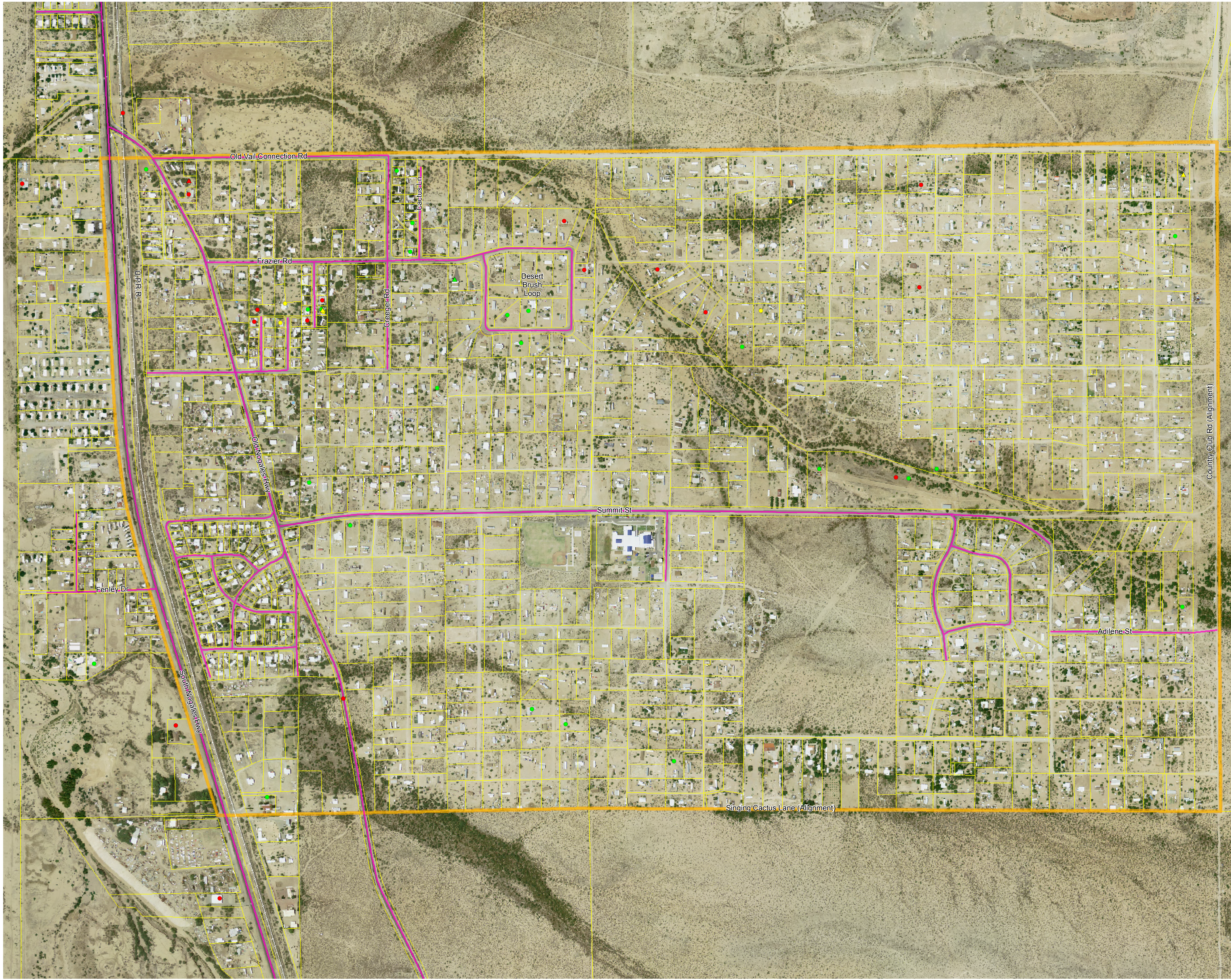


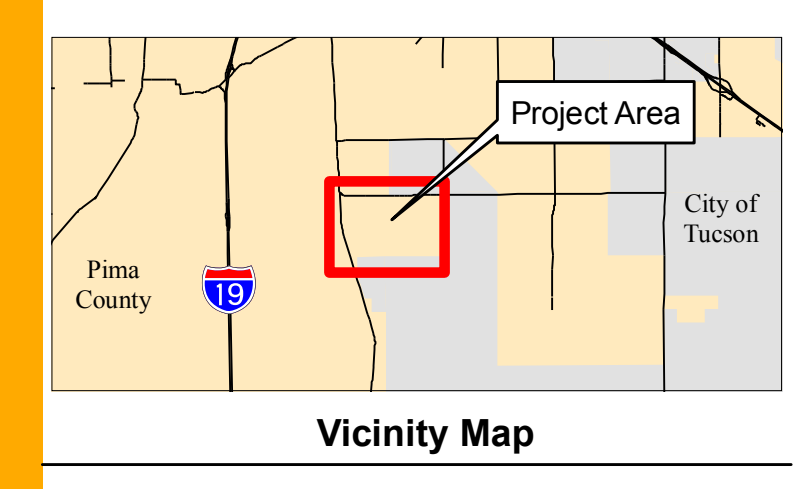
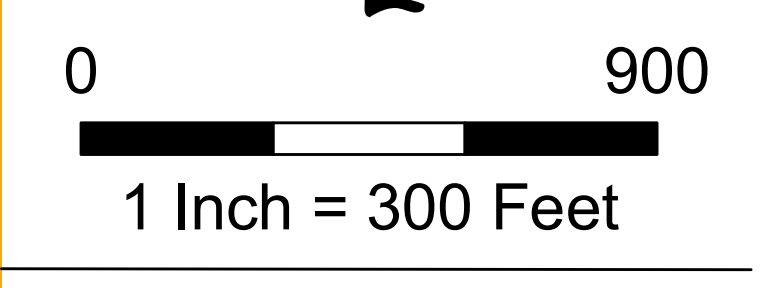
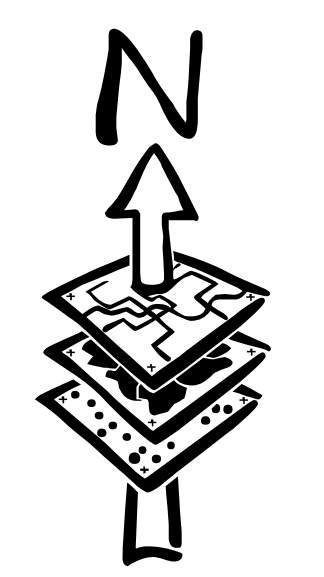
Summit Area Drainage Study

Project Area & Drainage Complaints

Exhibit One



- Legend**
- Drainage Complaints From Public Meetings**
- ▲ Flooding
 - ▲ Roadway/Access
 - ▲ Conveyance/Ponding
- Drainage Complaints From Pima County**
- Flooding
 - Roadway/Access
 - Conveyance/Ponding
- County Maintained Roads
- Railroad
- Parcel Boundary
- Project Area



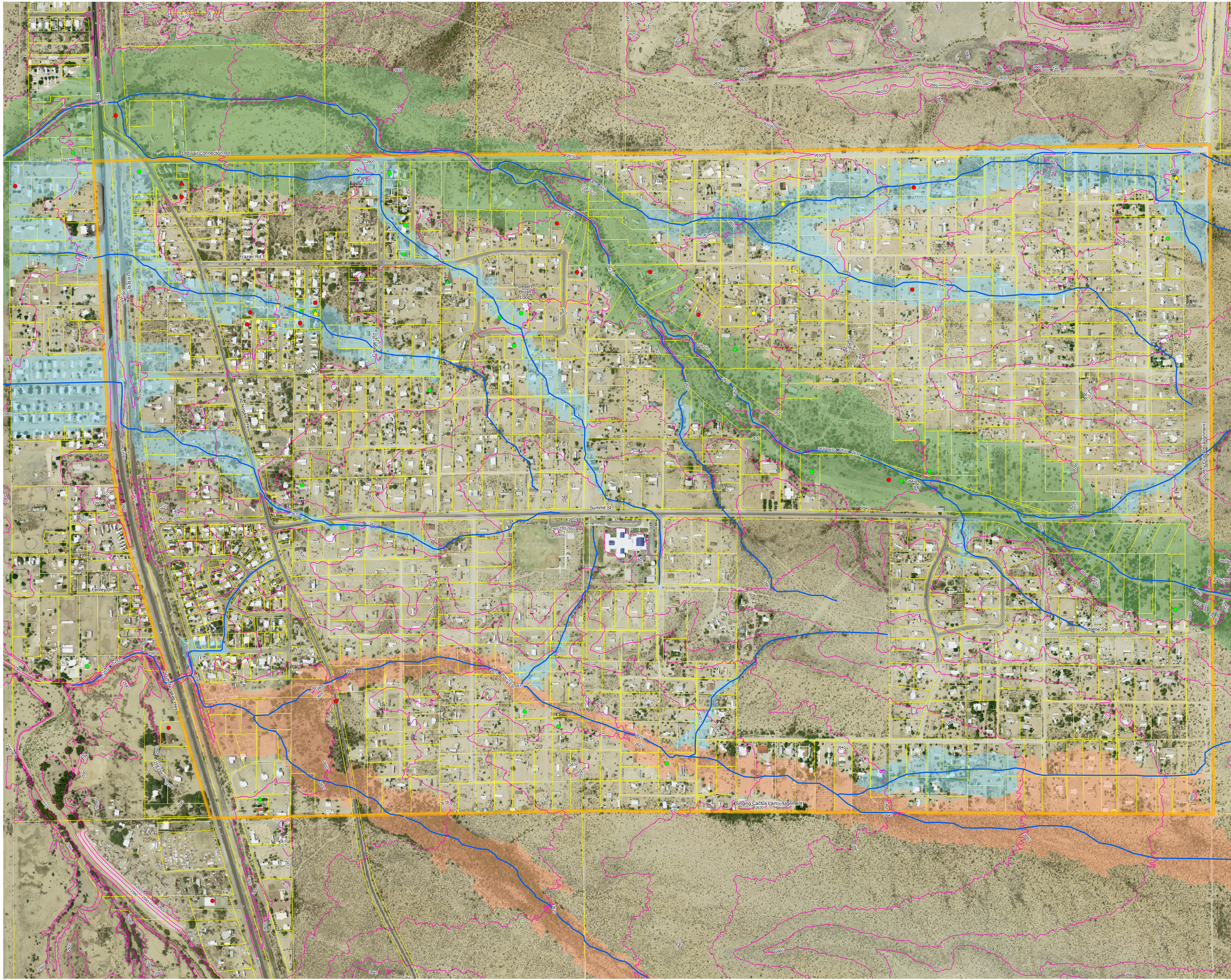
W:\Active\185120071\CIS\Project\13042_project area.mxd 07/06/07



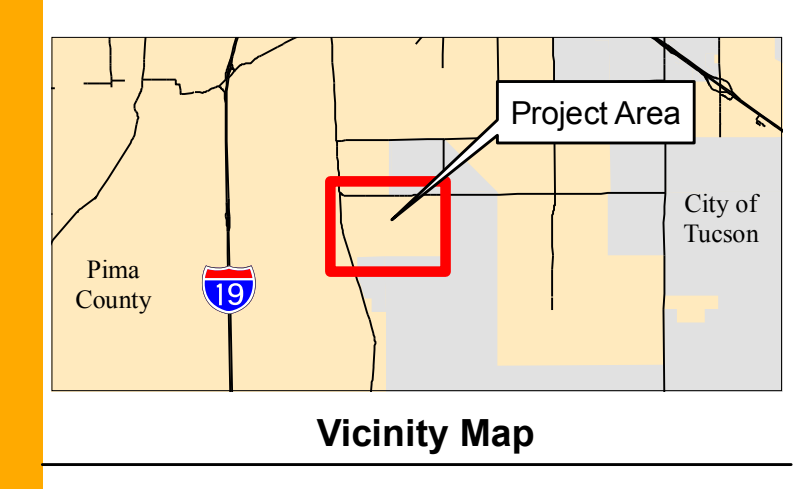
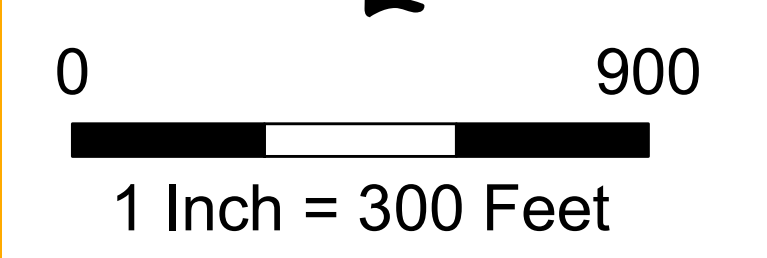
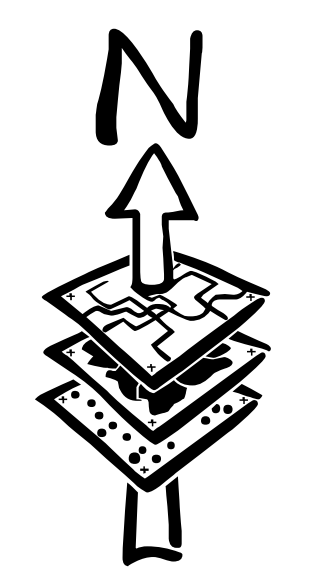
Stantec Consulting, Inc
201 North Bonita Avenue Ste. 101
Tucson, AZ 85745-2999

Summit Area Drainage Study Regulatory Floodplains & Drainage Complaints

Exhibit Two



- Legend**
- Drainage Complaints From Public Meetings**
- ▲ Flooding
 - ▲ Roadway/Access
 - ▲ Conveyance/Ponding
- Drainage Complaints From Pima County**
- Flooding
 - Roadway/Access
 - Conveyance/Ponding
- Flowpath**
- 10' Contour Line
 - Summit Floodplain
 - Franco Floodplain
 - Local Floodplains



W:\Active\18512007\GIS\Projects\23042a_floodplains.mxd 07/06/07



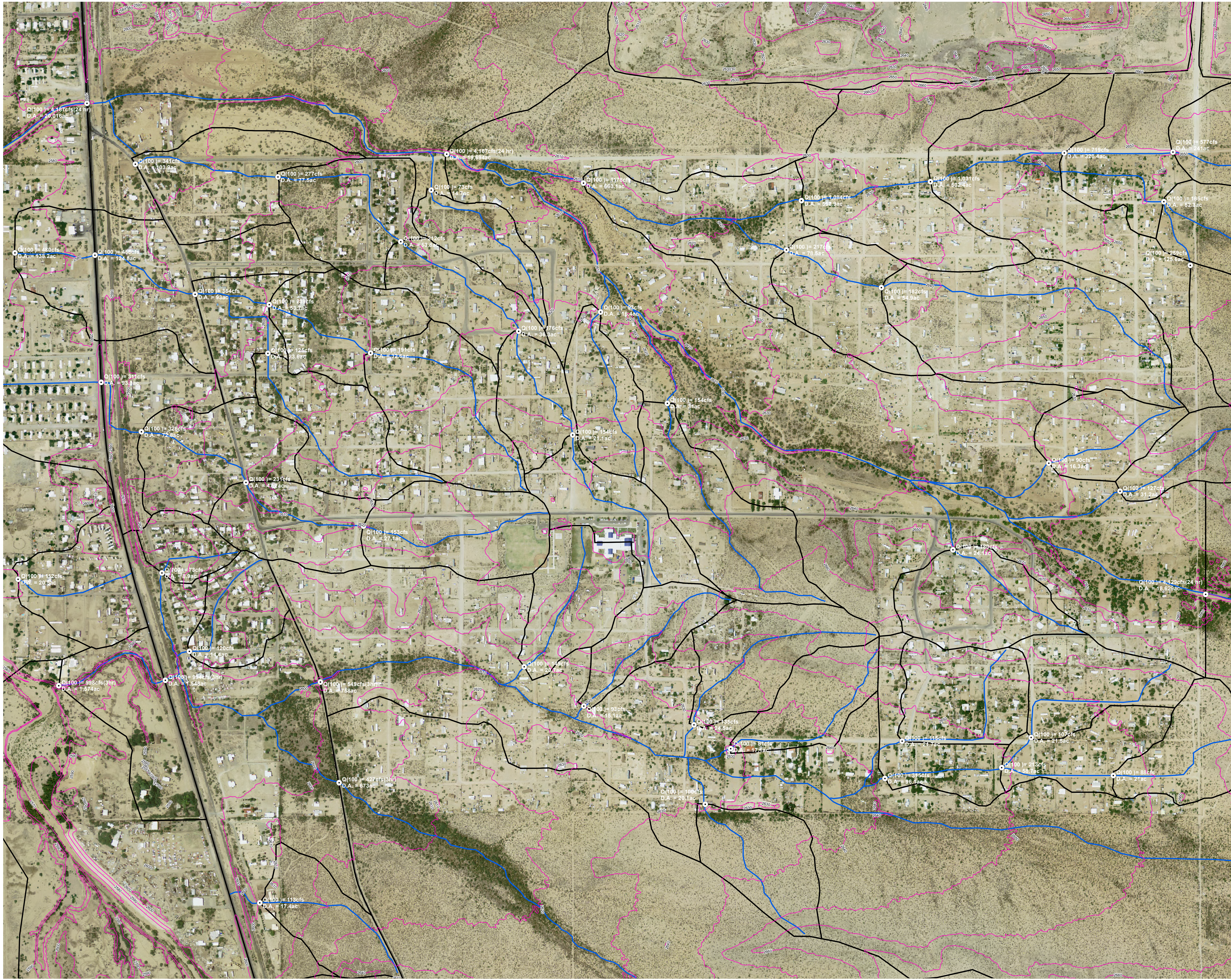
Stantec

Stantec Consulting, Inc
201 North Bonita Avenue Ste. 101
Tucson, AZ 85745-2999

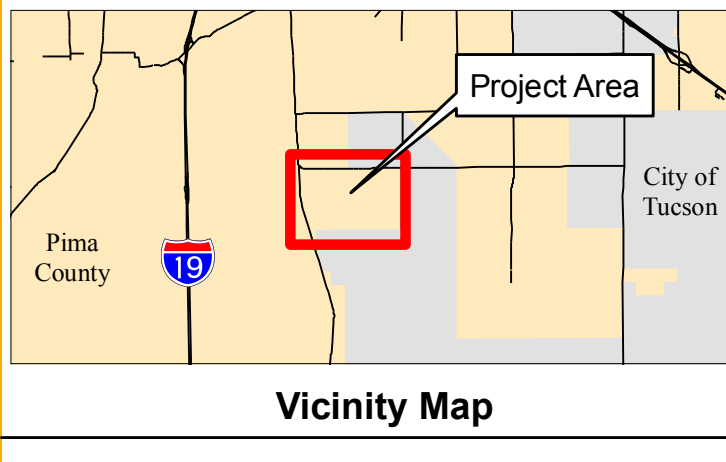
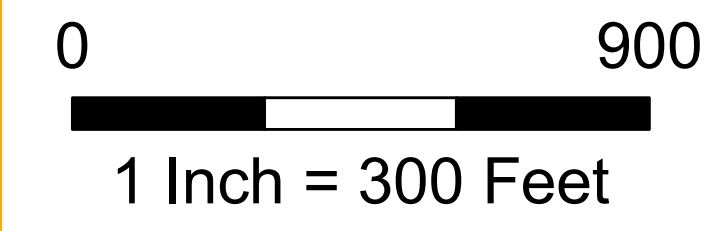
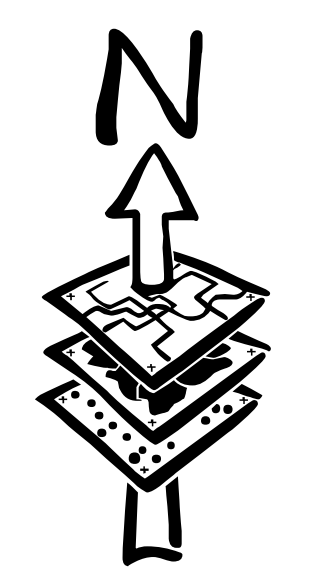
Summit Area Drainage Study

Watershed Hydrology

Exhibit Three



- Legend**
- Concentration Point
 - Flowpath
 - 10' Contour Line
 - Watershed Delineation



Stantec Consulting, Inc
201 North Bonita Avenue Ste. 101
Tucson, AZ 85745-2999

W:\Active\18512007\CIS\Projects\33042_watersheds.mxd 07/09/07

Summit Area Drainage Study Concept Alternatives

Exhibit Four - Map 1

PRELIMINARY

Legend

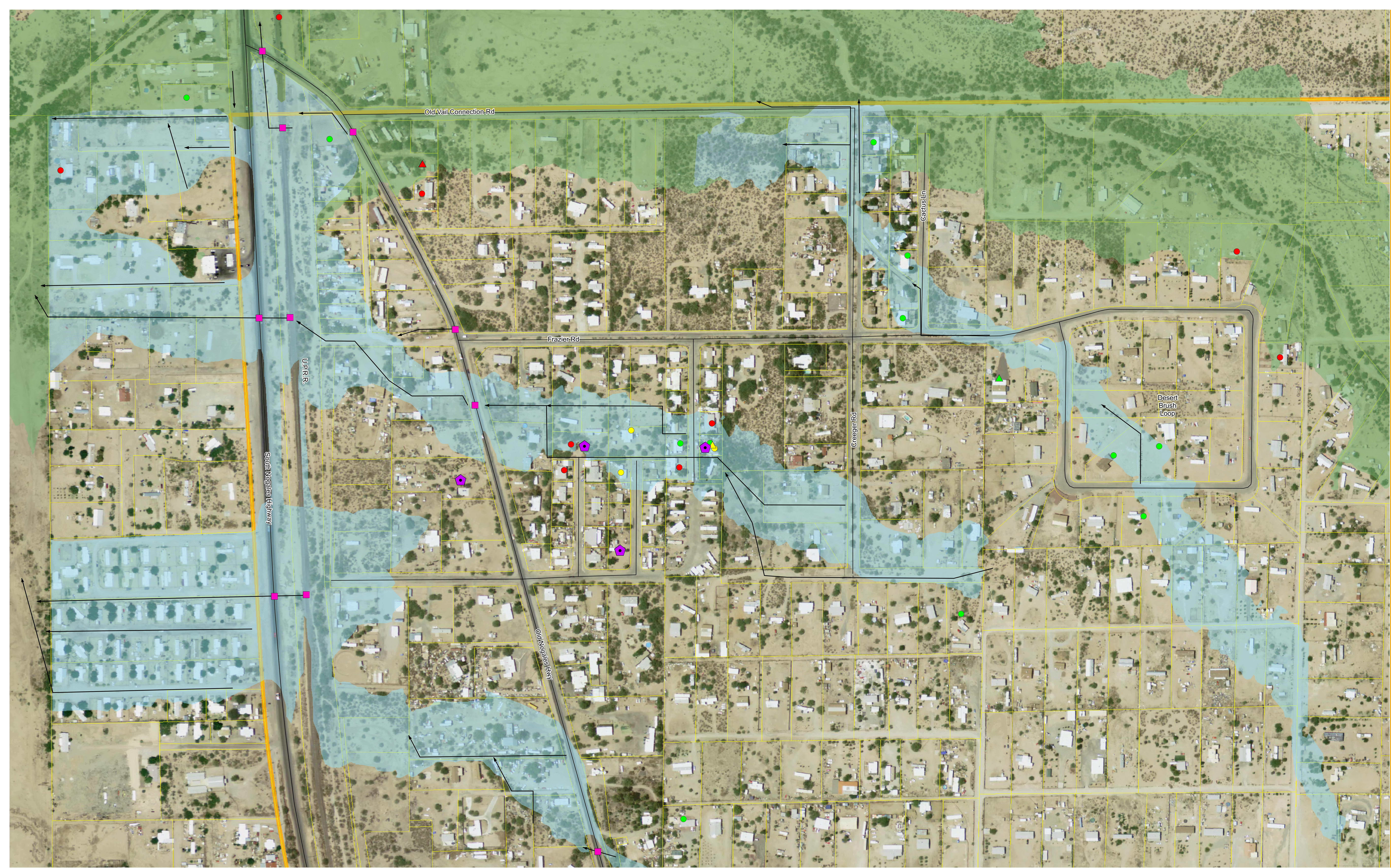
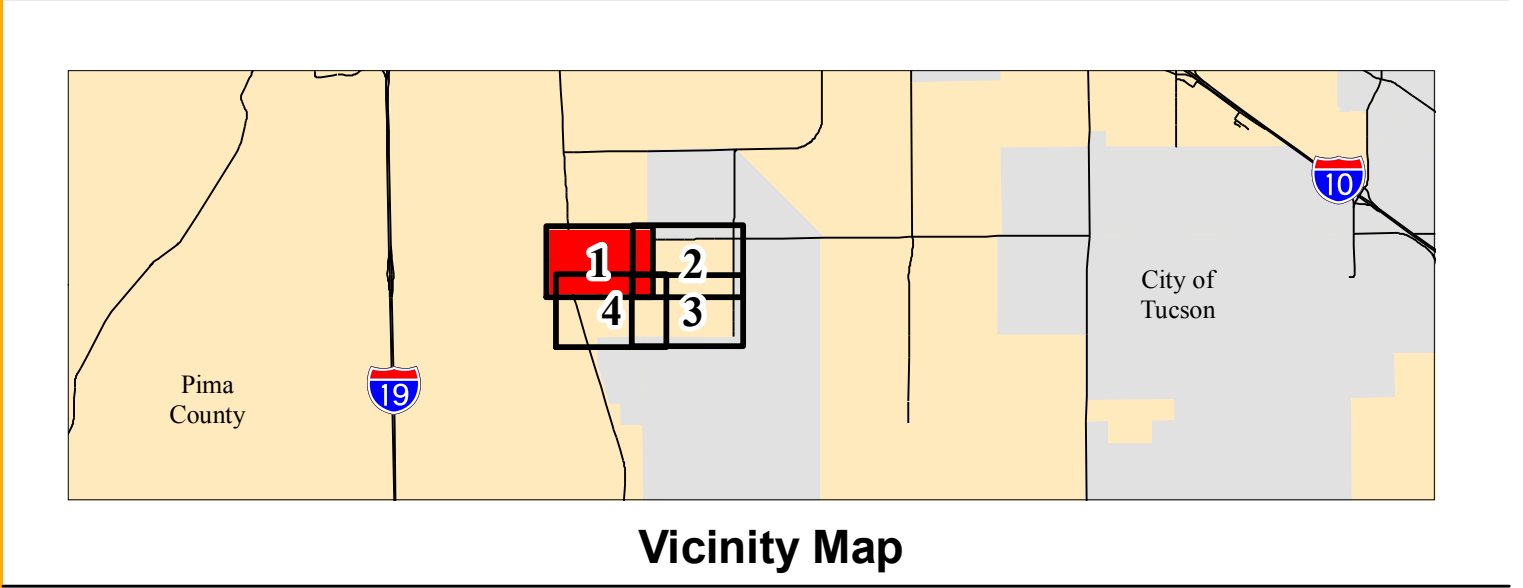
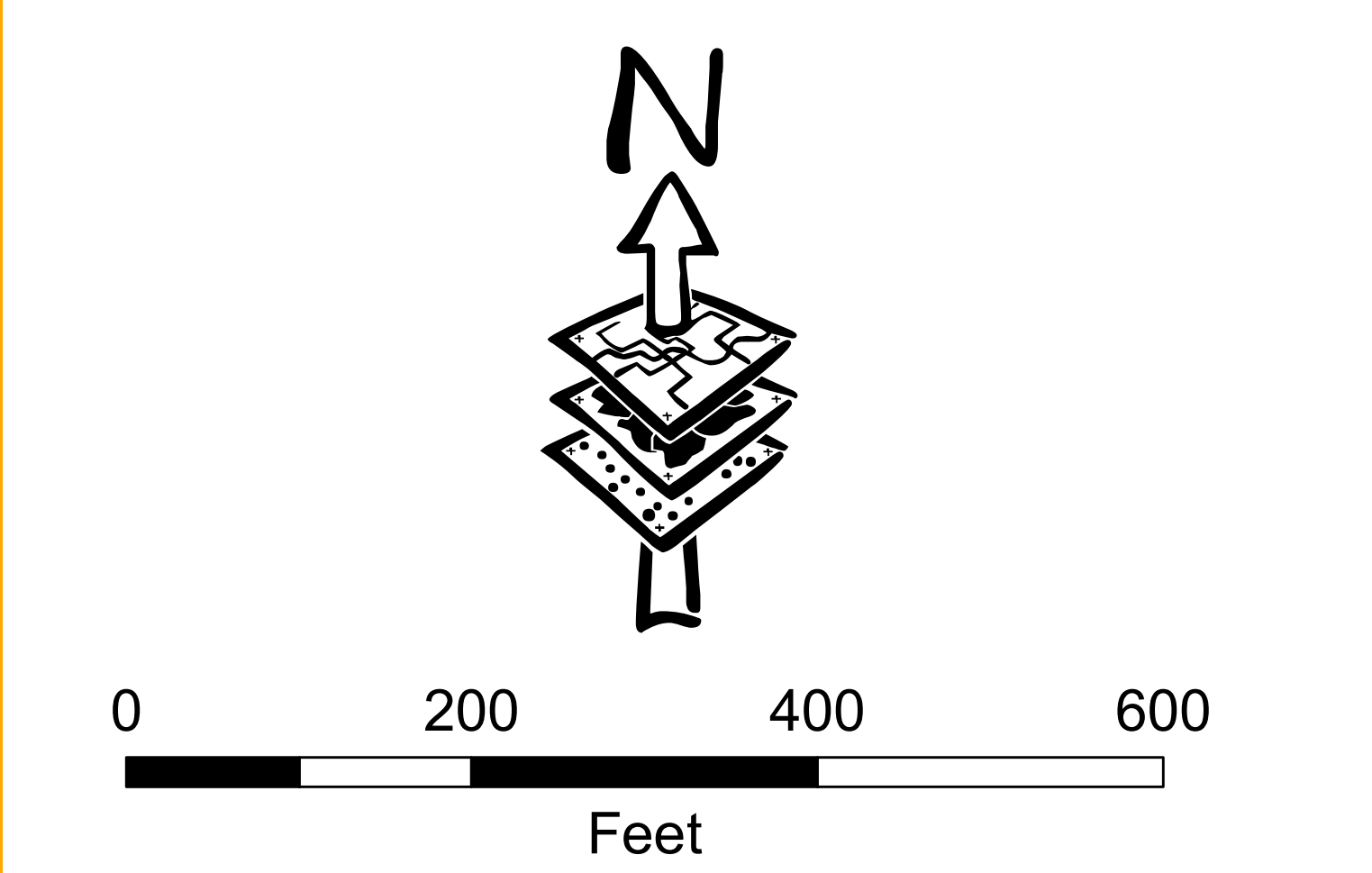
Drainage Complaints From Public Meetings

- ▲ Flooding
- ▲ Roadway/Access
- ▲ Conveyance/Ponding
- ◆ Meeting 2 Participants

Drainage Complaints From Pima County

- Flooding
- Roadway/Access
- Conveyance/Ponding
- Existing Culvert/Bridge

- Alternative Concept Flowpath
- ▭ Parcel Boundary
- ▭ Summit Floodplain
- ▭ Franco Floodplain
- ▭ Local Floodplains
- ▭ Project Area

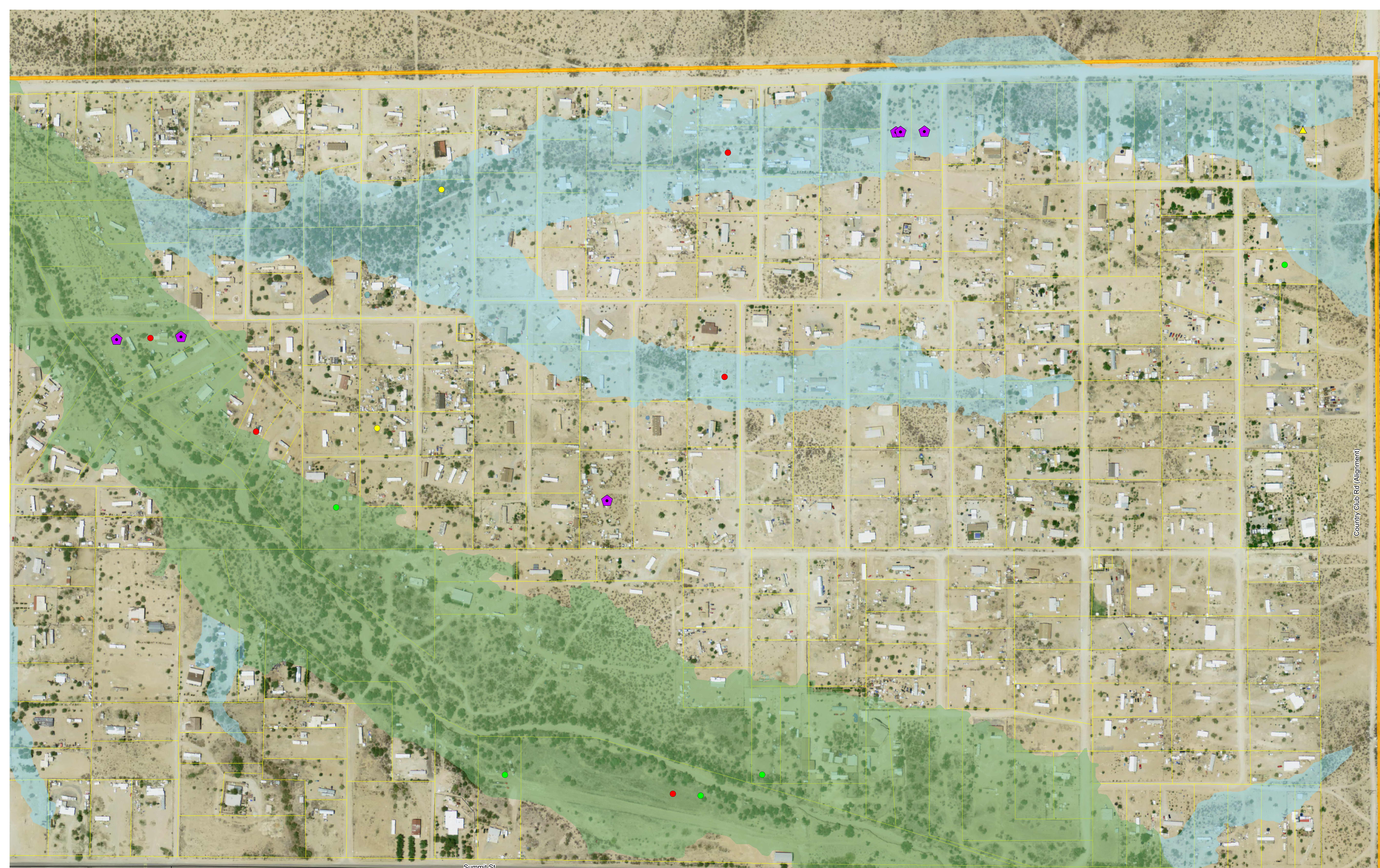


W:\active\18512007\GIS\Projects\43042_conceptuals.mxd 07/09/07

Summit Area Drainage Study Concept Alternatives

Exhibit Four - Map 2

PRELIMINARY



Legend

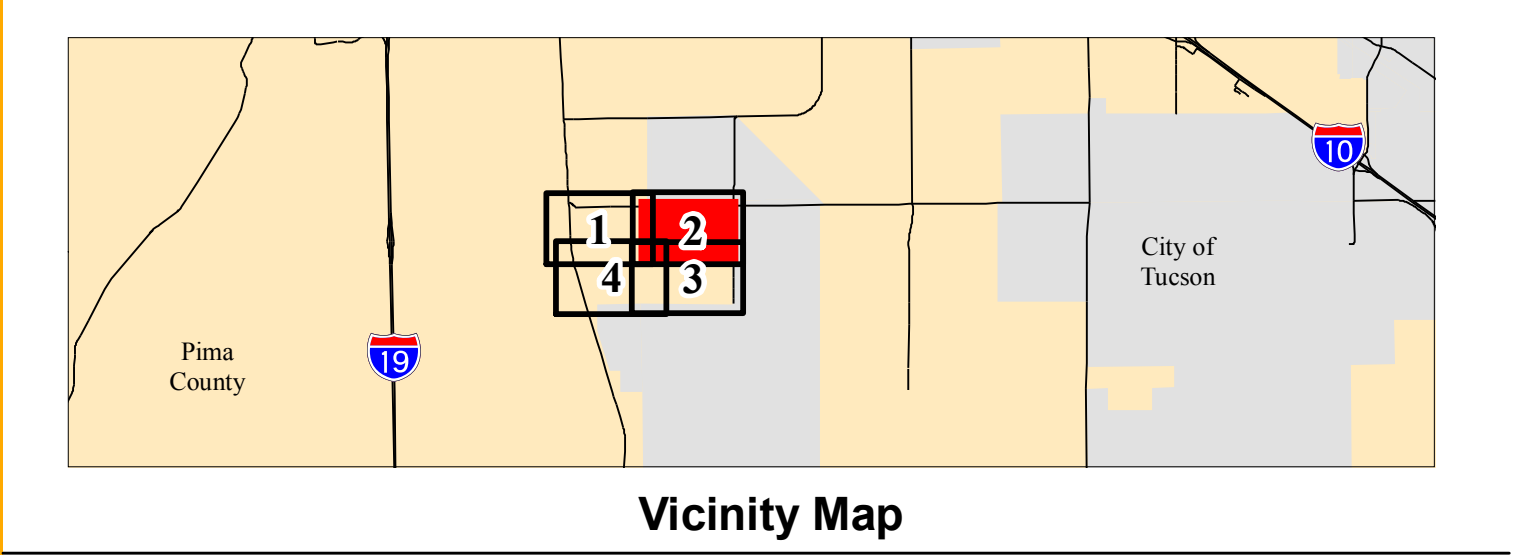
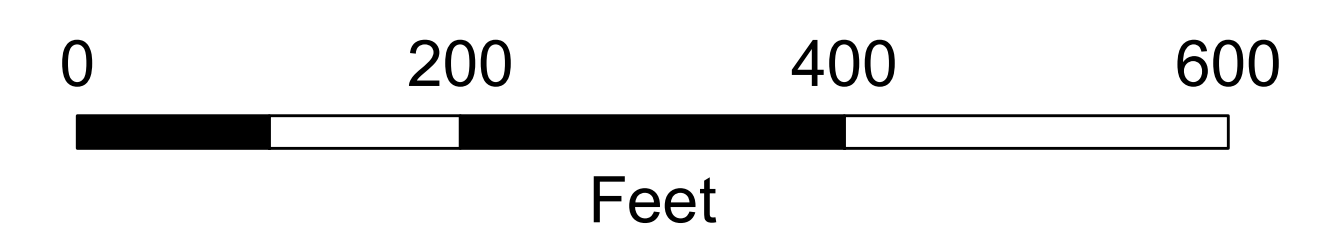
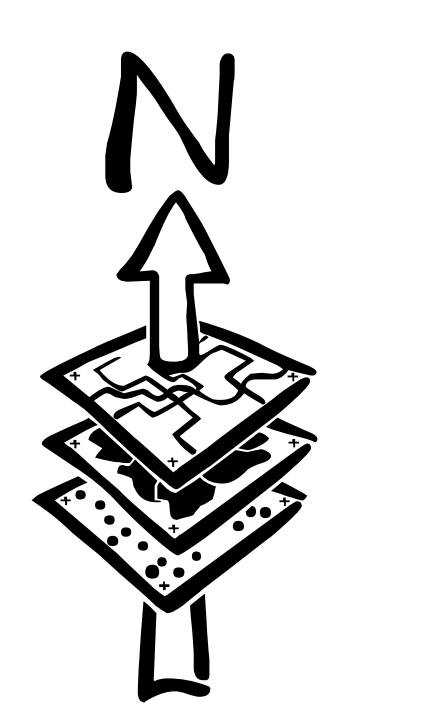
Drainage Complaints From Public Meetings

- Flooding
- Roadway/Access
- Conveyance/Ponding
- Meeting 2 Participants

Drainage Complaints From Pima County

- Flooding
- Roadway/Access
- Conveyance/Ponding
- Existing Culvert/Bridge
- Alternative Concept Flowpath

- Parcel Boundary
- Summit Floodplain
- Franco Floodplain
- Local Floodplains
- Project Area



W:\active\18512007\GIS\Projects\43042_conceptuals.mxd 07/09/07

Summit Area Drainage Study Concept Alternatives

Exhibit Four - Map 3

PRELIMINARY

Legend

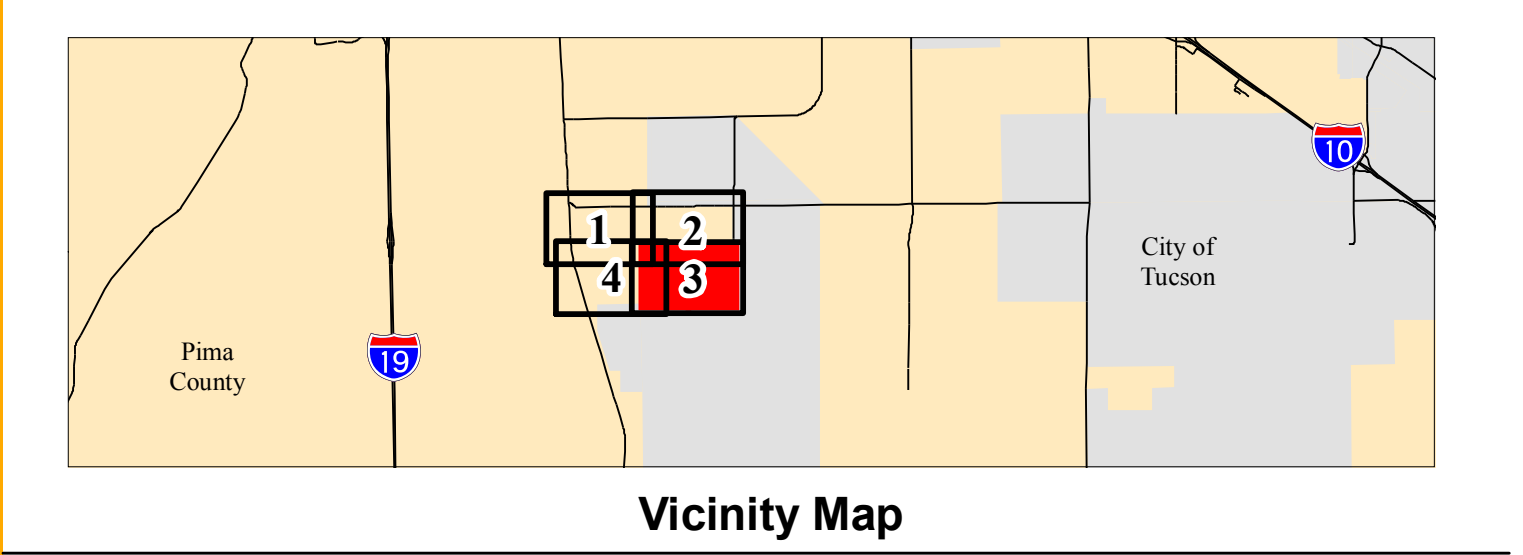
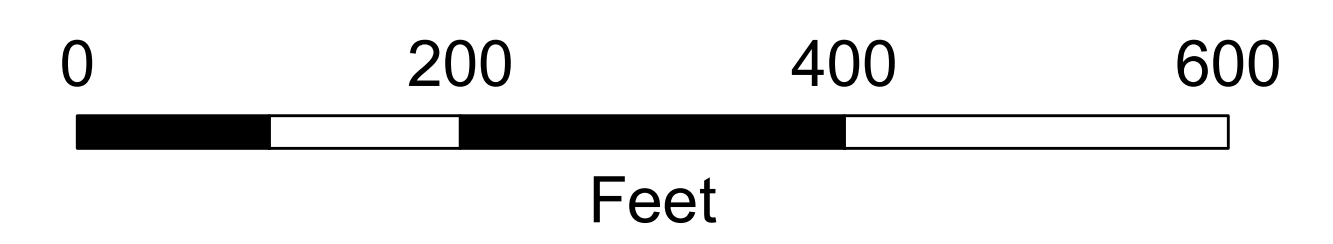
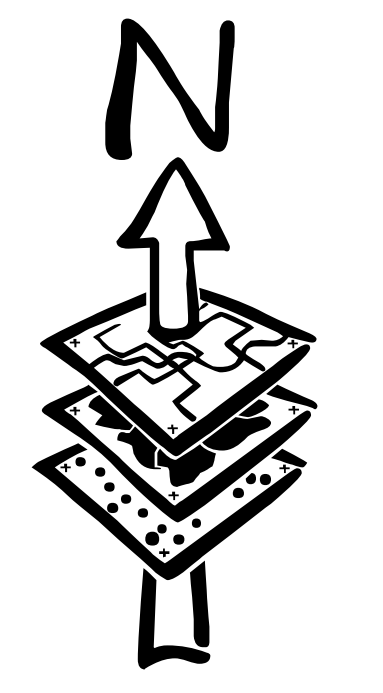
Drainage Complaints From Public Meetings

- Flooding
- Roadway/Access
- Conveyance/Ponding
- Meeting 2 Participants

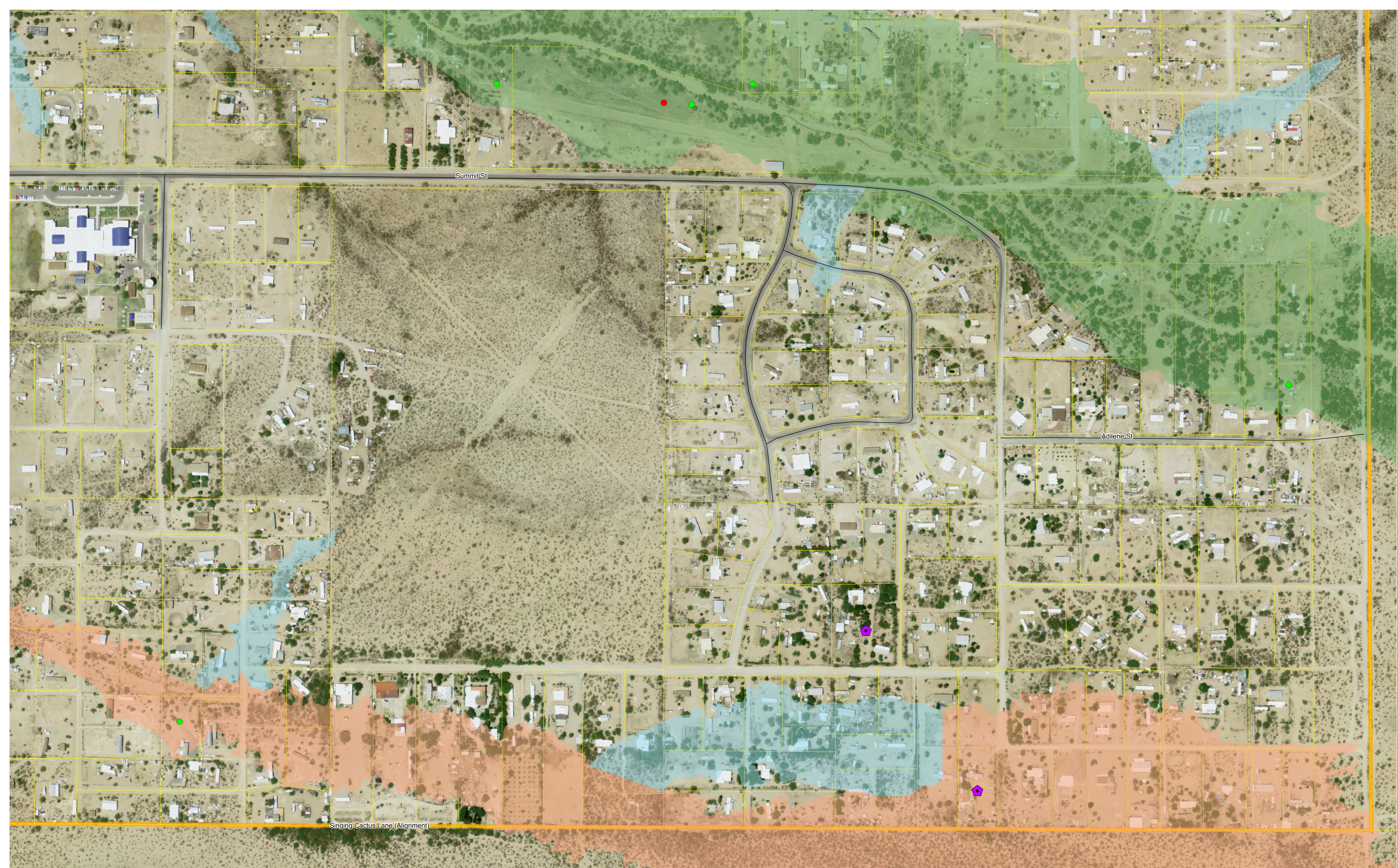
Drainage Complaints From Pima County

- Flooding
- Roadway/Access
- Conveyance/Ponding
- Existing Culvert/Bridge

- Alternative Concept Flowpath
- Parcel Boundary
- Summit Floodplain
- Franco Floodplain
- Local Floodplains
- Project Area



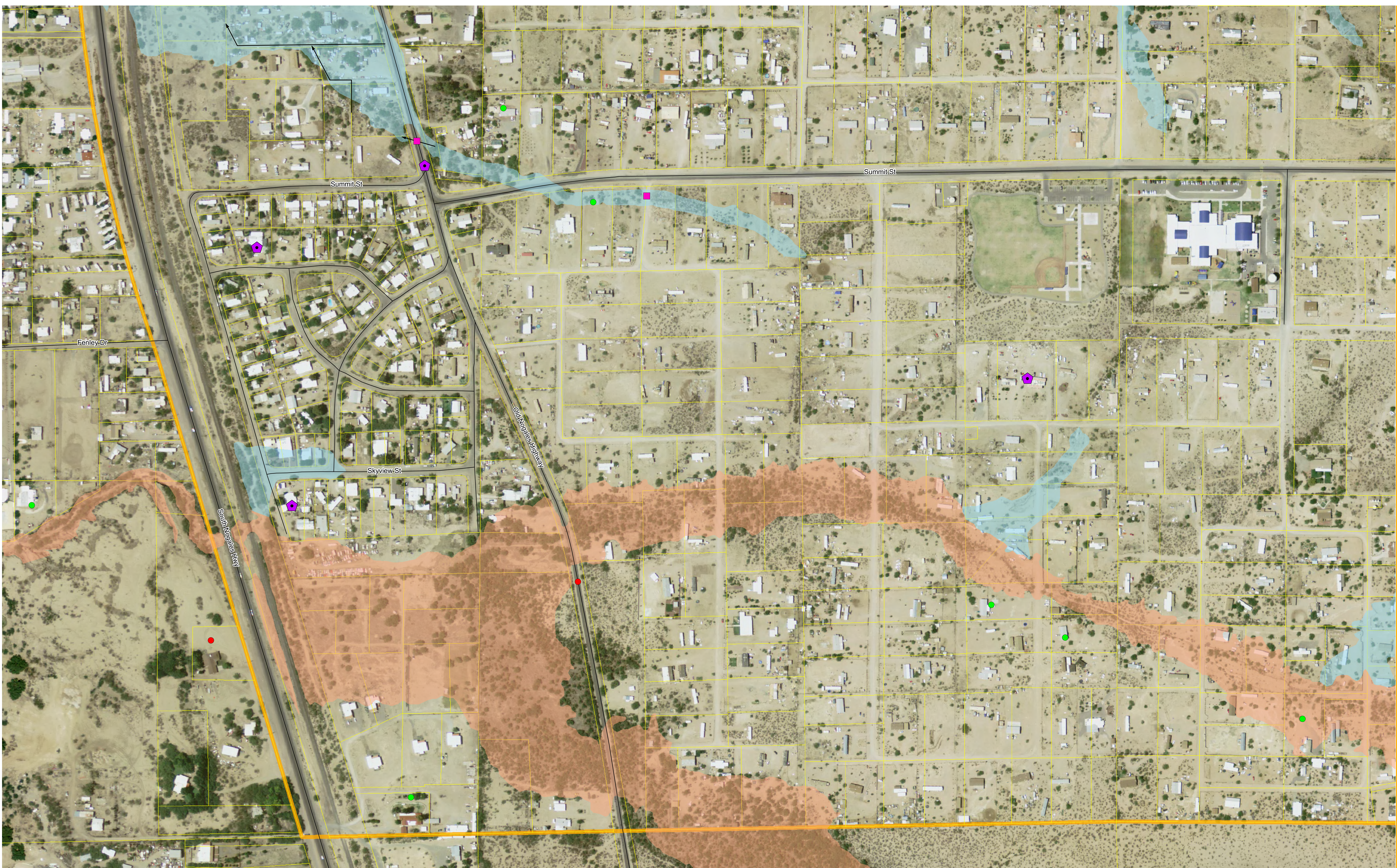
W:\active\18512007\GIS\Projection\43042_concepts.mxd 07/09/07



Summit Area Drainage Study Concept Alternatives

Exhibit Four - Map 4

PRELIMINARY



Legend

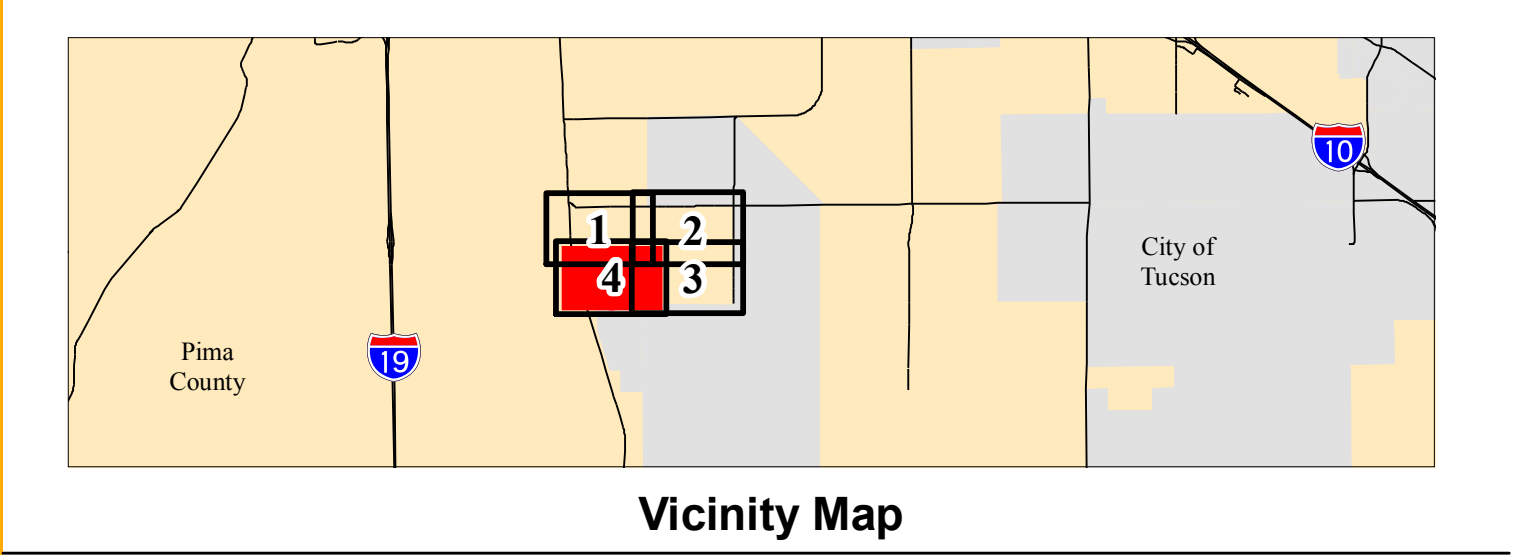
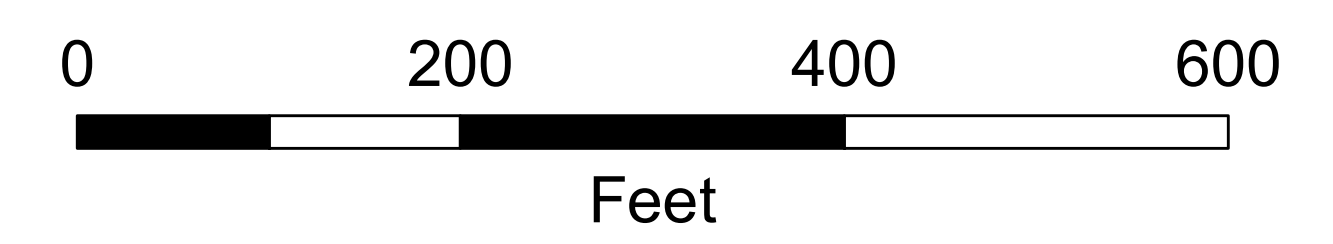
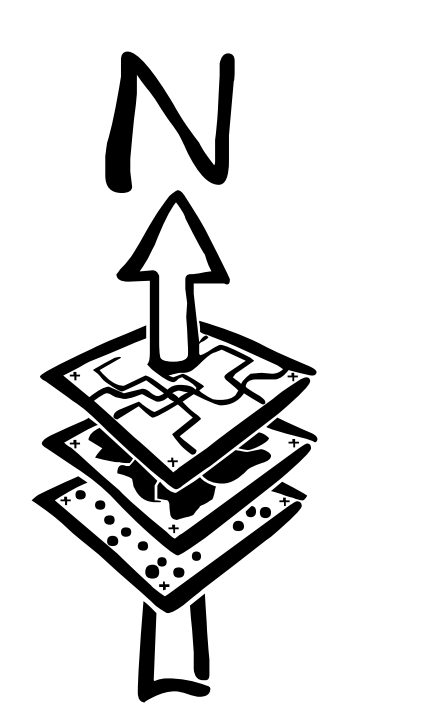
Drainage Complaints From Public Meetings

- ▲ Flooding
- ▲ Roadway/Access
- ▲ Conveyance/Ponding
- ◆ Meeting 2 Participants

Drainage Complaints From Pima County

- Flooding
- Roadway/Access
- Conveyance/Ponding
- Existing Culvert/Bridge
- Alternative Concept Flowpath



- ▭ Parcel Boundary
- ▭ Summit Floodplain
- ▭ Franco Floodplain
- ▭ Local Floodplains
- ▭ Project Area



W:\active\18512007\GIS\Projects\43042_Concepts.mxd 07/09/07

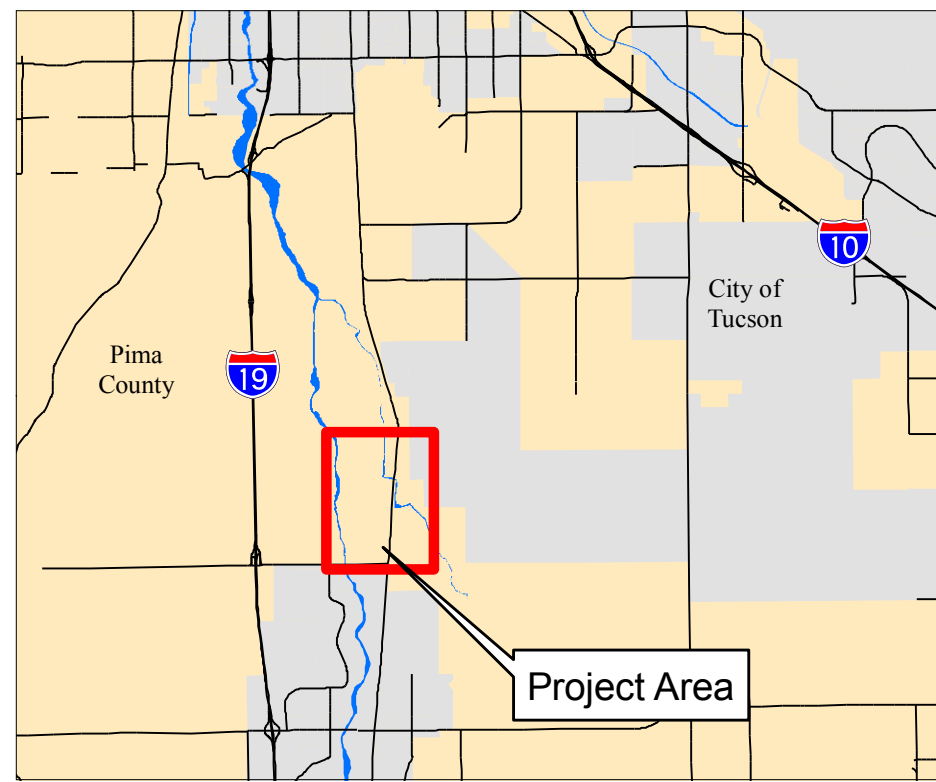
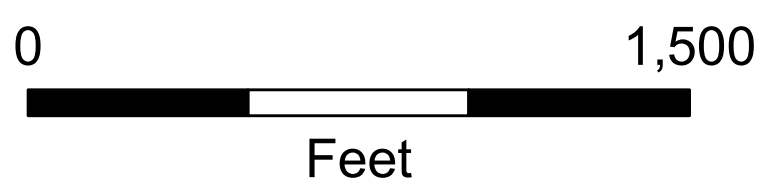
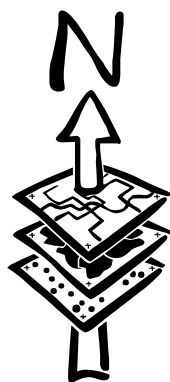


Legend

-  10' Contour
-  Modeled 100-yr Floodplain



Stantec Consulting, Inc
 201 North Bonita Avenue Ste. 101
 Tucson, AZ 85745-2999



Vicinity Map

Santa Cruz River Study