

**MOHAVE COUNTY DEPARTMENT OF PUBLIC HEALTH
ANNUAL REPORT
FISCAL YEAR 2005 - 2006**

TABLE OF CONTENTS

LETTER FROM THE DIRECTOR	Page 1
BOARD MEMBERS	Page 2
MOHAVE COUNTY PROFILE	Page 3
OFFICE LOCATIONS	Page 4
DEPARTMENT ORGANIZATION	Page 5
FINANCIAL INFORMATION	Page 6
SUMMARY OF DIVISION PROGRAMS	
A. ENVIRONMENTAL HEALTH	Page 7 - 10
B. NUTRITION AND HEALTH PROMOTION	Page 11 - 12
C. PUBLIC HEALTH NURSING	Page 13 - 16
D. SENIOR PROGRAMS	Page 17
E. BIO TERRORISM & EMERGENCY RESPONSE	Page 18
PATTERNS IN HEALTH, MORBIDITY & MORTALITY	Page 19 - 22

November 6, 2006

Public health preparedness has been both an opportunity and a challenge for our department. Key challenges have included new partnerships, new workforce needs, new technologies and the integration of emergency preparedness with other public health functions. These challenges have created a lot of extra work for public health professionals but they have also created a better system. It has given public health the opportunity to educate the public about our role in protection every day and during emergencies.

We have an exceptional team here at the Mohave County Department of Public Health. We are making significant strides in the realm of preparedness and within the more traditional roles of public health. We recognize the important role our partners play in working together with us. We are dedicated to performing our job with excellence and with the idea that our citizens can truly "count on us".

Patty Mead

Patty Mead
Health Director

BOARD MEMBERS

BOARD OF SUPERVISORS

Pete Byers, Chairman
District 1

Tom Sockwell, Member
District 2

Buster Johnson, Member
District 3

COUNTY MANAGER

Ron Walker

BOARD OF HEALTH 2004 - 2005

Pete Byers
Chairman

Diane Vick
Vice-Chairman

Margaret Nyberg
Member

Vacant
Member

Loa Roberts
Member

Dr. Lehi Barlow
Member

Steve Greeley
Member

Phil Moon
Member

Dr. Goodrich
Physician Member

HEALTH DIRECTOR

Patty Mead, R.N., M.S.

MOHAVE COUNTY PROFILE

Mohave County is geographically the second largest county in the state and has a population of over 160,000. Most of it is classified as desert, but of its 13,479 square miles, 186 square miles are water. The county has over 1,000 miles of shoreline and is a great water sports center with the Colorado River and Lake Mohave, Lake Havasu, and Lake Mead. Mohave County is situated in northwestern Arizona and is bordered by the states of Utah, Nevada and California and the counties of La Paz, Coconino and Yavapai. Mohave County has four incorporated cities: Bullhead City, Lake Havasu City, Colorado City, and Kingman (the County seat). The Mohave County Department of Public Health offices are located in Kingman, Bullhead and Lake Havasu with clinics and senior nutrition sites in Colorado City and Golden Shores.

2005 Population Figures (from DES Estimates)

Bullhead City	38,210
Colorado City	4,080
Kingman	25,860
Lake Havasu City	53,435
Unincorporated	66,450
<div style="display: flex; justify-content: space-between; margin: 0;"> Total 188,035 </div>	

Age Distribution (from Arizona Vital Statistics)

<u>Age</u>	<u>Population</u>	<u>Percent of total</u>
0-14	36,067	19.18%
15-19	11,151	5.93%
20-44	52,395	27.87%
45-64	50,245	26.72%
65+	38,177	20.3%

2004 Population Composition (from Arizona Vital Statistics)

<u>Race</u>	<u>Population</u>	<u>Percent of total</u>
White Non-Hispanic	160,035	85.11%
Hispanic or Latino	20,836	11.08%
African American	1,005	.53%
American Indian or Alaska Native	4,523	2.41%
Asian or Pacific Islander	1,636	.87%

DISTRICT OFFICES

Kingman

700 West Beale Street
P.O. Box 7000
Kingman, AZ 86402-7000

Lake Havasu City

2001 College Drive
Box 9, Suite 115
Lake Havasu City, AZ 86403-1953

Bullhead City

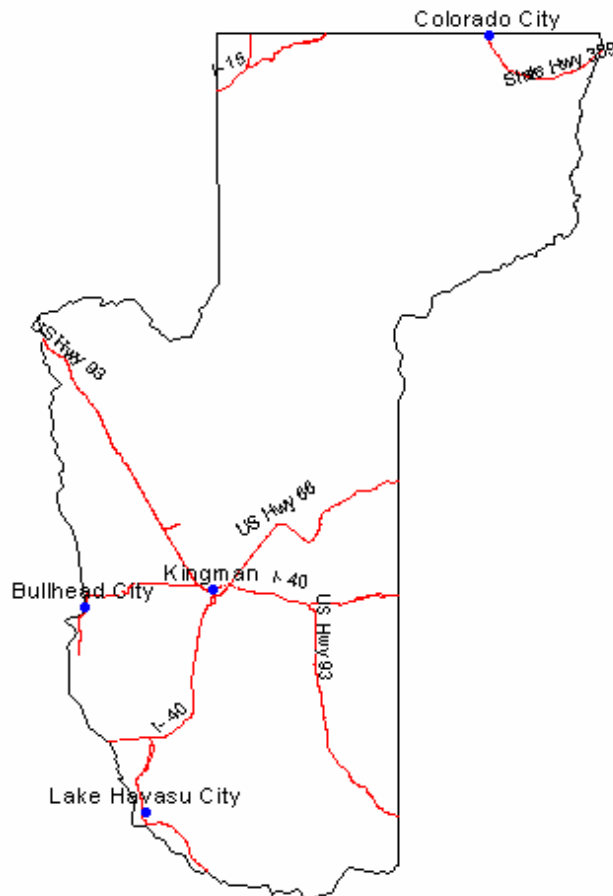
1222 Hancock Rd
Bullhead City, AZ 86442-5940

1230 Hancock Rd
Bullhead City, AZ 86442

SATELLITE LOCATIONS

Golden Shores Senior Nutrition Site

Colorado City Clinic



DEPARTMENT ORGANIZATION

The Mohave County Department of Public Health is administered through six divisions including Administration, Bioterrorism Defense and Emergency Response, Public Health Nursing, Environmental Health, Senior Programs, and Nutrition & Health Promotion. Each division (except Administration and BT Defense) has program sites in each of the County's major cities. The Department Director is responsible for the oversight of the department programs. The division managers are responsible for the implementation, management and operation of the programs in their division.

DIRECTOR

Patty Mead

ASSISTANT DIRECTOR

Jennifer McNally

Account Specialist – 2
Office Specialist – 1
Office Assistant – 1
Office Clerk - .5

NURSING SERVICES MANAGER

Christy Bronston

Nursing Supervisor – 2
Nurse Midwife – 1
Office Assistant – 1
Public Health Specialist – 8
Public Health Nurse, RN – 8.5
Paraprofessional Temp – 2
Community Health Educators – 1

ENVIRONMENTAL HEALTH MANAGER

Rachel Patterson

Environmental Health Supervisor – 2
Office Supervisor - 1
Environmental Health Specialist I/II – 11
Environmental Health Technician – 2
Environmental Health Tech P/T - 3
Office Clerk/Assistant – 6
Office Clerk – 4
Clerical/Paraprofessional Temp – 1.5

BIOTERRORISM COORDINATOR

Bruce Leeming
Epidemiologist – 1
Volunteer Coordinator - 1

SECRETARY SENIOR

Shelly Watson

SENIOR PROGRAMS MANAGER

Brad Bixler

Site Supervisor – 3
Site Coordinator – 1
Senior Programs Assistant – 5
Cook - 3
Prep Cook-3
Labor/Trades Temp 9

NUTRITION/HEALTH PROMOTION MGR.

Carol Matthews

Community Nutrition Specialist Sr – 1
Community Nutrition Specialist II – 2
Community Nutrition Specialist I – 2
Community Health Education Spec. I - 4
Community Health Education Spec. Sr.-I
Community Nutrition Worker Sr. – 1
Community Nutrition Worker - 3
Public Health Specialist I - 8
Office Assistant – 1

FINANCIAL INFORMATION

July 1, 2005 – June 30, 2006
(from Mohave County Financial Services Adopted Budget Report, July 2005)

Revenues	
<i>Federal Grants</i>	\$2,317,830
<i>Ventana Reimbursement</i>	83,074
<i>Fees from Services</i>	1,696,153
<i>State Grants & Contracts</i>	658,173
<i>County General Funds</i>	1,511,676*
<i>Miscellaneous & Donations</i>	203,954
<i>City Cost Sharing</i>	0
<hr/>	
Total Revenues	\$6,470,860

* includes one-time general fund transfer to cover market increase for FY 05/06.

Expenditures	
<i>Personnel Services</i>	\$4,278,077
<i>Operating Supplies</i>	827,975
<i>Other Charges/Services</i>	1,138,914
<i>Capital Outlay</i>	41,566
<hr/>	
Total Expenditures	\$6,286,532

Revenues and Expenditures do not include AHCCCS figures.

DIVISION SUMMARIES

ENVIRONMENTAL HEALTH

The Environmental Health Division (EHD) is responsible to enforce a wide variety of environmental health programs. EHD is delegated responsibility by the Arizona Department of Environmental Quality for on-site wastewater systems and inspection of septic pumper trucks, refuse/garbage haulers as well as nuisance complaint response. The Arizona Department of Health Services delegates to EHD permit approval and inspection of food service establishments, public and semi-public swimming pools, hotels/motels, campgrounds and children's camps, RV parks, bottled water plants, and response to public nuisance complaints. In addition, Mohave County offers Food Handler education, permit approval and inspection of pet shops and kennels and is heavily involved in surveillance for WNV. From approximately May through October, EHD traps several times each week at locations all over Mohave County. Thus far for 2006, there have been nine WNV positive pools of mosquitoes and we have fogged Mohave Valley areas several times due to the high minimum infection rate of mosquitoes tested. EHD continues to send dead birds to the ADHS lab and respond to standing/stagnant water complaints throughout Mohave County.

The EHD proposed three new ordinances which had a public hearing in July, 2006. The first ordinance provides requirements for who can conduct site investigations in Mohave County. The second allows EHD to place liens on properties that are scheduled for clean-up; and the third provides guidelines for design and installation of alternative on-site wastewater systems. The fee schedule was revised in November 2005 and the Board of Supervisors was able to approve three new Sanitarian positions along with three new part-time Environmental Health Technician positions to oversee the site investigations in Mohave County.

The delegation agreement with ADEQ expired on June 30, 2006 and an extension was granted through 2006. We are currently in negotiations with ADEQ to finalize our delegation agreement and anticipate its completion prior to the end of 2006.

During the past year, EHD field staff began wearing uniforms. These consist of shirts, sweaters, and hats with our department logo and inspector badges. This has allowed EHD staff to be more recognizable in the field as government employees. The food safety program has been enrolled in the FDA Program Standards which is an assessment tool used to standardize food safety programs nationwide. We are now working on the first assessment of the Mohave County program. When this is finished, EHD will begin the standardization process.

A draft policy and procedure manual has been completed and staff is in the process of reviewing the draft and making comments. When the review process is finished, the manual will be revised and one will be given to each EHD staff member. The county attorney's office has been heavily involved and instrumental in the development of many of the policies and procedures.

In fiscal year 2005-2006 the on-site wastewater program continued to receive the most attention from the EHD staff. EHD issued 2,904 permits and performed 2,967 inspections - not including the site investigation witnessing program. Our food program is also very busy and EHD staff is providing excellence inspecting and educating Mohave County's food service industry. This year 4,069 food handler cards were issued; representing a slight increase in the number of food handler cards issued.

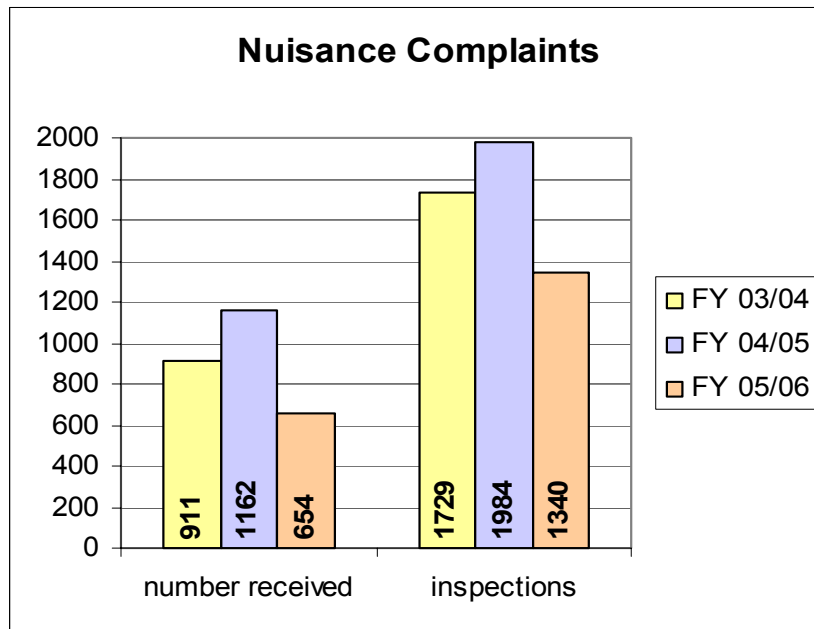
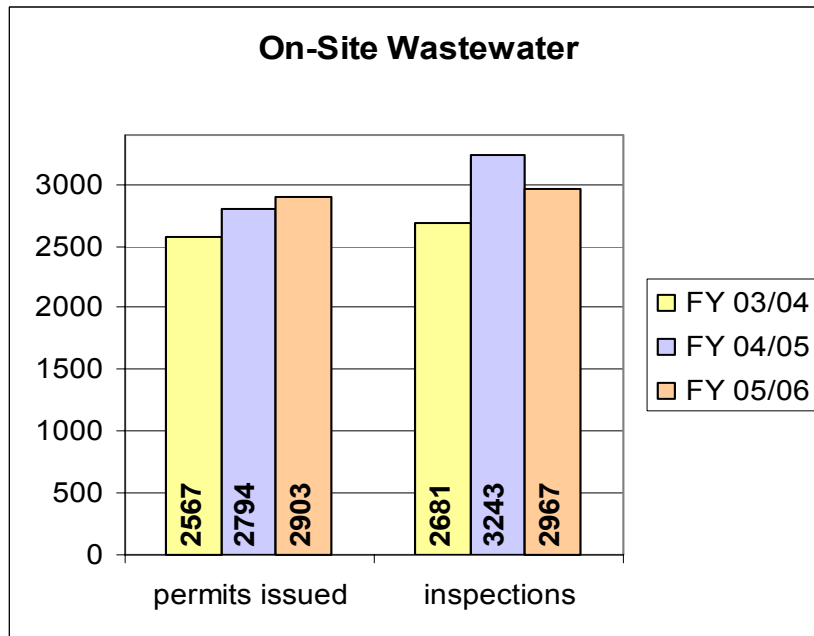
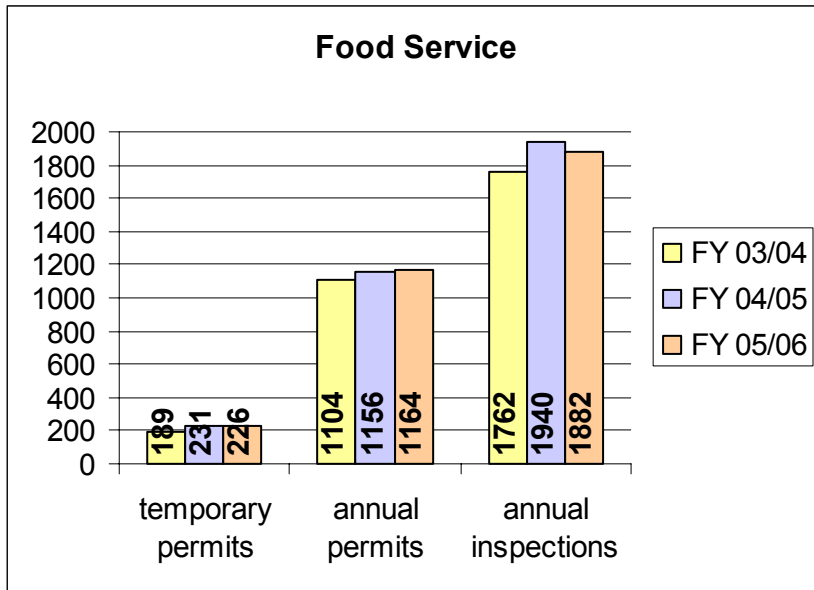
EHD is in the midst of reorganization to better serve our customers. The EHD staff will become more specialized in their fields of expertise. At this time we have one supervisory position open to supervise the ADEQ programs. When this position is filled, the reorganization will be complete. It appears the ADEQ programs will make up approximately 59% of EHD activities with ADHS taking up the other 41%. The reorganization will make it easier to determine where money is being spent in each program as well as where it is coming in.

EHD conducted approximately 1,340 responses to approximately 654 complaints made to our offices (approximate numbers are available because of a change in permit programs about one-quarter of the way through FY05-06). Public nuisance complaints include those made regarding food establishments, swimming pools, standing water, animal manure, trash/refuse, ground-feeding of pigeons and open sewage.

1,882 inspections of annually permitted establishments were made over the past year by EHD including food establishments, RV parks, pet and grooming shops, hotel/motels, swimming pools, and septic and garbage haulers. EHD is behind in these inspections currently as we have 5 open Sanitarian positions.

STATISTICS BY CATEGORY

Food Service	
Temporary Permits	226
Annual Permits	1164
Annual Inspections	1882
Food Handler Cards	4069
On-Site Wastewater	
Permits Issued	2903
Inspections	2967
Pools/Spas	
Permits	251
Inspections	357
Kennels/Grooming	
Permits	34
Inspections	29
Hotel & Motel	
Permits	88
Inspections	56
Trailer Parks	
Permits	101
Inspections	120
Water Quality Tests	
	0
Nuisance Complaints	
Number Received – land use	654
Inspections – land use	1340
Number Received – annually permitted establishments	396
Wells (recommendation of approvals given to ADWR)	
Notice of Intent approvals	146



NUTRITION AND HEALTH PROMOTION

The Nutrition and Health Promotion Division works to promote healthy lifestyle choices through a variety of food assistance programs, tobacco use prevention and cessation programs, nutrition education, and physical activity programs. The budget for Nutrition and Health Promotion in 2006 exceeded \$1.35 million.

WIC, the Special Supplemental Food Program for Women, Infants, and Children contracts to serve 5000 participants per month in Mohave County. More than 50% of babies born in Mohave County are born to WIC mothers. About half of the infants and twenty five percent of children to age five are served by WIC. WIC is a supplemental food assistance program for pregnant, breastfeeding, and postpartum women, infants, and children to age 5. Income eligibility is met by families and clients enrolled in Food Stamp and ACCCHS or at 185% of poverty. The WIC program also provides individual nutrition education care plans and referrals to health and social services. The Mohave County WIC program continues to provide online nutrition education. Internet classes can be accessed by WIC clients in their own homes, at the public library, or in a friend's home. Approximately 35% of WIC clients now take classes at a location other than our clinics thereby reducing their appointment time by 10 to 15 minutes and greatly improving clinic efficiency. The value of redeemed Mohave County food checks for this year exceeded \$3,000,000.00.

The Preventive Health and Health Services Block Grant is funded to reduce coronary heart disease by increasing the number of Arizona residents who get at least 30 minutes of physical activity on most days per week. Grant activities have targeting physical activity programs for youth. Program objectives include working with 4th through 8th graders at enrolled local schools to encourage daily, moderate intensity, physical activity. Additional community events targeting adults and families were also promoted through the community component of the program.

The Commodity Supplemental Food Program (CSFP) provides 606 nonperishable food boxes to income eligible women, children to age 6, and seniors. As in years past the contracted caseload has been inadequate to meet demand.

The Mohave County Community Nutrition Program provides a series of nutrition education classes to third graders at low income, participating schools. When possible, the presentations include a Smiths supermarket tour. Presentations are designed to encourage fruit and vegetable consumption.

The Local Incentive Award contract was continued for the second year. These funds provide us with additional resources to provide nutrition education programs to food stamp participating children and families.

The Mohave County Tobacco Use Prevention Program (McTUPP) works to prevent youth from using tobacco, supports those youth and adults tobacco users to quit, and educates the community on the hazards of use and exposure to tobacco. Disparate populations are a major focus when providing services. Most services are provided through multiple subcontractors including some local school districts and charter schools, local hospitals, youth coalitions, after school programs, and a city police department. McTUPP is also involved in promoting smoke free work and home environments.

Each of the majority tri-cities offers youth the opportunity to become members in an anti tobacco youth coalition. These youth participate in local and statewide activities: Youth Leadership trainings which promote communication, leadership, and team building skills; Attorney General's Merchant Compliance Program identifies local merchants that sell tobacco to minors; Peer-to-Peer Tobacco Education presentation teach elementary age youth about the dangers of tobacco; and Media outlet projects whereby the youth participate in parades, health fairs, fund raising activities and sporting events. "Mr. Butthead" a 6'5" walking cigarette debuts in all of the local parades.

Overall, approximately 2500 intensive tobacco prevention education interventions were provided to youth in grades 4 through 8. More than 5731 one time tobacco education contacts were made with youth in school through peer presentations and special events. More than forty-seven community events occurred throughout the county reaching 25,000 individuals.

Intensive stop smoking classes were held for 54 community group and 19 on-site work places, 522 adults participated. Those clients that enroll in our classes are offered vouchers to purchase nicotine replacement therapies at 50% of the cost. Youth cessation programming was held for 23 students. More than 110 business contacts were made to provide tobacco free technical assistance and all school campuses remain tobacco free.

PUBLIC HEALTH NURSING

The Nursing Division of the Mohave County Department of Public Health reaches out to the community through a range of public health programs. Many of the services are free, regardless of household income. Some services are provided on a sliding fee scale basis and others are available at a low, fixed cost. Funding for Public Health programs comes from grants, taxes, fees, donations, and local and state revenues.

Newborn Intensive Care Program: This free program, which also includes developmental delay follow-up, features home visits by a Registered Nurse. Facilities such as St. Joseph's Hospital in Phoenix and Flagstaff Medical Center in Flagstaff refer babies with potential health problems to the local health department. In turn, a nurse arranges for home visits with the family to evaluate and monitor the child's condition, screen for developmental delays, teach caretaking techniques, and to answer questions. Referrals are often made to other agencies that can assist with the child's special needs.

Immunization Program: Free immunizations are provided to *children and adolescents* through the *Vaccines for Children Grant*. The vaccines that are available are those routine childhood immunizations recommended by the American Academy of Pediatrics.

Adults: a Tetanus-diphtheria vaccine is recommended every ten years and Hepatitis B, Hepatitis A, Varicella, MMR, and pneumonia are also available for a minimal fee. The Menimune vaccine is now available for those needing protection against Meningococcal disease. Most colleges are now mandating this vaccine prior to acceptance. Also available is the new combination Hepatitis A and B vaccine, Twinrix, so two vaccines are provided in one "shot".

Influenza Vaccine: Each fall, the Public Health Division offers "flu" vaccine clinics for Senior Citizens and other high-risk individuals, especially those with heart or lung disease. These clinics are held in each city and usually begin early to mid-October. Clinic dates, times and locations are published in local newspapers and on our HealthELinks.com website. The vaccine is also given at the local Public Health Nursing offices. Pneumonia vaccine is also provided for a minimal fee for those with serious medical conditions and those over the age of 65.

Communicable Disease Program: The nursing staff works with local physicians, Arizona Department of Health Services, and the Centers for Disease Control & Prevention to control the spread of infectious diseases. This includes identifying cases and those exposed to cases, testing, providing immunization or medications (if applicable), and providing information to the public on how to break the cycle of infection.

Ryan White Care Program: Assistance is available for qualifying HIV positive individuals. Current services include case management and advocacy, food and nutritional assistance, Health Insurance Continuation, medication and primary medical assistance.

HOPWA: Housing Opportunities for People with AIDS program is available for individuals with HIV/AIDS. This program encourages autonomy by providing temporary emergency financial assistance for housing and utilities during times of severe illness or hardship.

Tuberculosis Control and Treatment: Tuberculosis is on the decrease in other states, but Arizona continues with the steady number of TB cases each year. To help combat this disease, the Public Health Nursing Division, with assistance from the Mohave County TB Control Officer, provides one-on-one case management for each case of active Tuberculosis. This includes Direct Observed Therapy to ensure the health and safety of the public. Treatment for active Tuberculosis is recommended for 6-12 months

TB skin testing is provided for a minimal charge. Those with positive skin tests receive counseling, a chest x-ray, and free medication, if necessary. A pulmonologist, a doctor who specializes in chest disease, monitors the progress of each patient on medication.

Pregnancy Testing: Healthy pregnancies start with early prenatal care. For this reason, Public Health Nursing provides pregnancy testing and counseling on a sliding fee-scale basis as early as fourteen days after a missed menstrual period.

Reproductive Health: Some women have chosen to wait to begin or enlarge their families, so the Public Health Division conducts free and low cost Reproductive Health Clinics which provide birth control to those who otherwise could not afford it. Our clinics are staffed by nurses and a female Nurse Practitioner who specializes in women's health. This year, additional funding has been provided by Arizona Family Planning Council to enhance the infrastructure of our program and we have added services available for clients.

Sexually Transmitted Disease Clinic: Clinics are held weekly to test for and treat the most common sexually transmitted diseases. For a charge, we will provide an exam, testing, counseling, treatment, and contact follow up, if warranted.

HIV Testing and Counseling: HIV testing and counseling is provided by appointment only for a minimal fee. Our knowledgeable nursing staff are trained and certified by the Arizona Department of Health Services to provide professional counseling and testing for HIV. The client has his/her choice of confidential or anonymous testing, and appointments last approximately one hour. Test results are provided within two weeks and are given during a short post-test counseling session.

Maternal Child Health Program: A nurse case manager coordinates the activities of the maternal child health programs in Mohave County. A few of the activities in which this program is involved are Health Start case management, Child Safety Seat activities, and Oral Health Needs assessment. We are also involved in the coordination of local resources for the Medical Home Project.

Health Start Program: This home visiting program is a free service that permits a lay health worker, or "promotora", to be a resource for pregnant women and their families. After the birth of the child, the promotora visits the family in the home to provide education on health and safety issues such as immunizations, car seat safety, home safety and many more. High risk mothers and infants are visited by a Registered Nurse to facilitate and encourage positive outcomes.

Healthy Communities: This program provides two components: Car Seats and Access to Care.

Car Seat Program: This program provides certified child passenger safety technicians that offer education and free instruction on proper car seat installation. The technician demonstrates the safest methods for securing infants, toddlers and young children in a car restraint. The car restraint system being used by the family is checked to ensure that it has not been recalled for safety deficiencies. This program is also a free service designed for low to moderate income families.

Access to Care: This is an income-based program which works with families to establish a medical home for children and parents; it includes doctor and dental visits and assistance with obtaining medical coverage.

**Mohave County Department of Public Health
Nursing Division Statistics**

	FY 01/02	FY 02/03	FY 03/04	FY 04/05	FY 05/06
Newborn Intensive Care Program					
Home visits	214	149	229	231	207
Communicable Disease					
Disease investigations	859	1,150	978	1,393	1,234
Childhood Immunization Program					
Children vaccinated	7,713	5211	7448	5,816	*
Vaccinations given	14,969	18,188	15,989	13,955	*
Adult Immunizations Program					
Tetnus-Diphtheria	226	297	231	296	243
Hepatitis B	897	1,021	559	468	305
Hepatitis A	372	293	297	262	171
Varicella	21	15	15	8	25
MMR	194	151	162	108	179
Influenza	5033	3,760	4,167	8,950	5,959
Pneumonia	416	410	433	650	1,016
Tuberculosis Control					
TB skin tests	1,710	1,626	1532	1,712	1,149
Latent TB infection	220	194	219	252	179
Active case visits	957	666	468	513	291
Active case	5	2	2	4	*
Chest x-ray/clinics	175	193	155	158	162
Primary Reactor Visit				88	60
Reproductive Health					
Pregnancy Tests	802	855	1384	1,638	316
New/Annual visits	776	772	986	1,185	971
Sexually Transmitted Disease					
Clinic visits	292	311	380	394	150
Well Woman					
Clinic visits	127	112	51	40	9
HIV Counseling and Testing					
HIV tests	321	334	365	139	146
HIV post counsel	243	253	278	97	112
DNA Lab Draws	36	33	0	1	0
Health Start					
Visits	362	531	458	259	236

* data unavailable at time of report

SENIOR PROGRAMS

Mohave County Senior Programs main purpose is to provide hot nutritious meals and transportation to seniors and disabled citizens within the county. Senior Programs offers other programs such as socialization, education and support services at each of the senior centers. These services range from Social Security offices located within several of the senior centers to activities such as bridge, yoga, crafts, parties, and exercise classes. The Senior Centers have volunteers who help seniors with problems related to Medicare Part D. Four senior centers exist within Mohave County, including sites in Bullhead City, Golden Shores, Kingman and Lake Havasu City.

This year the Arizona Department of Transportation approved a vehicle grant for the Kingman Senior Center. The vehicle will arrive toward the end of calendar year 2006. The Arizona Senior Center Association's annual conference in Flagstaff selected Fran Croteau, a Lake Havasu Senior Center volunteer as their "Keynote Speaker." Ms. Croteau is one of the top volunteers in the state and her creativity, energy and positive attitude set the tone for one of the best senior conferences in recent history.

There are thrift shops at the Bullhead City, Kingman and Lake Havasu Senior centers. These thrift shops bring in more than \$30,000 per year. The thrift shops are operated by senior non-profits and the revenues are used to help pay for a portion of program expenses such as utilities, food purchases, equipment purchases and emergency repairs. The thrift shops also provide enjoyable volunteer jobs for senior citizens.

Senior Programs served 166,693 meals to senior citizens and handicapped persons during fiscal year 2005-2006. Senior Programs provided 37,851 units of transportation. Donations and volunteers are the some of the main reasons senior programs is still successful. This past year over 300 volunteers donated their time to help with programming. The donation of time is worth hundreds of thousands of dollars in labor savings based on minimum wage. Senior Programs continues to seek ways to reduce expenditures and increase donations. Local grocers donate bread products and Little Debbie's donates snacks to Senior Programs on a regular basis. Senior Programs purchases food in bulk and comparison shops between vendors and cities to keep costs down. Senior Programs has moved to group transit trips to increase its ability to transport more seniors. Senior Programs has started purchasing transit tokens, vouchers and coupons from each of the city transit systems in an effort to provide more transit to seniors. Seniors can access these services via a donation-based system.

BIO TERRORISM

Preparedness planning with emphasis on Pandemic Influenza planning continues to be the key focus for the 2005-2006 FY of the Bio Defense and Emergency Response Division. In April, we completed our gap analysis relating to our supplemental grant funding of Pandemic Flu Phase I from the CDC. This supplemental grant is for the purpose of further supporting our pandemic influenza preparedness and response. Included in these deliverables is the establishment of our Pandemic Coordinating Committee, comprised of our partners and stakeholders (governmental, public health, healthcare, emergency response, agriculture, animal health, education, business, communication, community based, and faith-based sectors along with private citizens). Our committees have been established within our communities and are meeting on a regular basis.

Our Pandemic Influenza Response & Recovery Plan has gone through a few revisions and remains in draft form, constantly being updated as new information is received from the CDC and Arizona Department of Health Services.

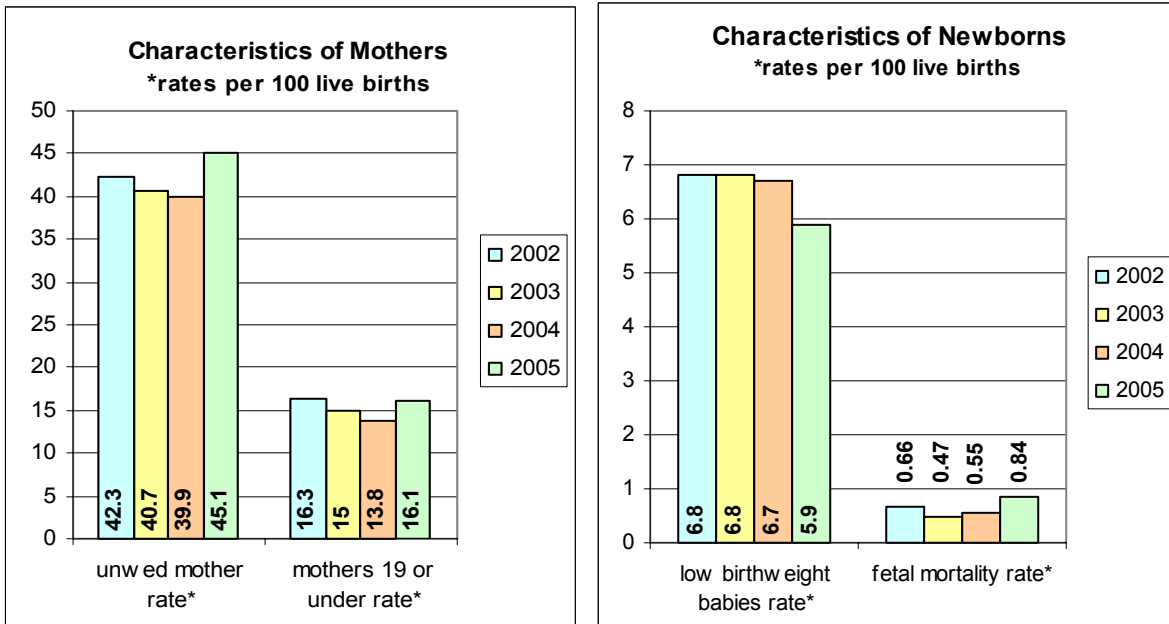
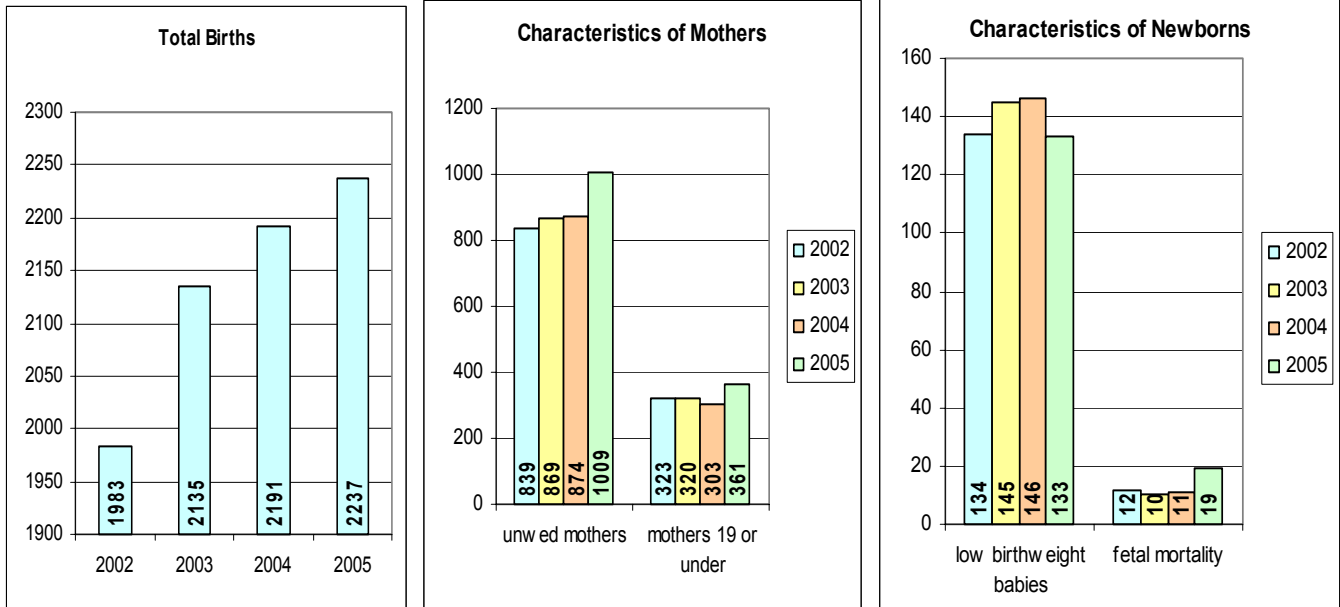
Our volunteer core remains crucial to our successful response to a major event. We currently have approximately 400 volunteers signed up with the health department, and continue to recruit new volunteers daily.

Part of our All Hazards Emergency Response and Recovery plan includes a plan for Mass Fatality Response and the county was fortunate to enter into contact with Dr. Julie Jervis as the new Medical Examiner. Dr. Jervis is also responsible to assist our department with emergency response planning and guidance and act as a key spokesperson as needed. Dr. Jervis has a great deal of experience in mass fatality response as part of FEMA's Disaster Mortuary Operations Team. Dr. Jervis has written our Mass Fatality Response Plan.

Our health department staff continues to receive training on a regular basis with regard to emergency response. Training this past year has included NIMS (National Incident Management System) certification, POD (Point of Distributing) operations, DOC (Department Operations Center) operations, On-Camera Media Training, Emergency Shelter Operations, Disaster Assessment, Pandemic Influenza Response, SNS (Strategic National Stockpile), Emergency Preparedness and Mass Fatality Response.

In conjunction with training, several exercises from table tops to full scale were held which included Pandemic Influenza Response, POD operations, DOC operations, EOC set-up and operations, ChemPack and Senior Leaders Seminar.

PATTERNS IN HEALTH, MORBIDITY, AND MORTALITY

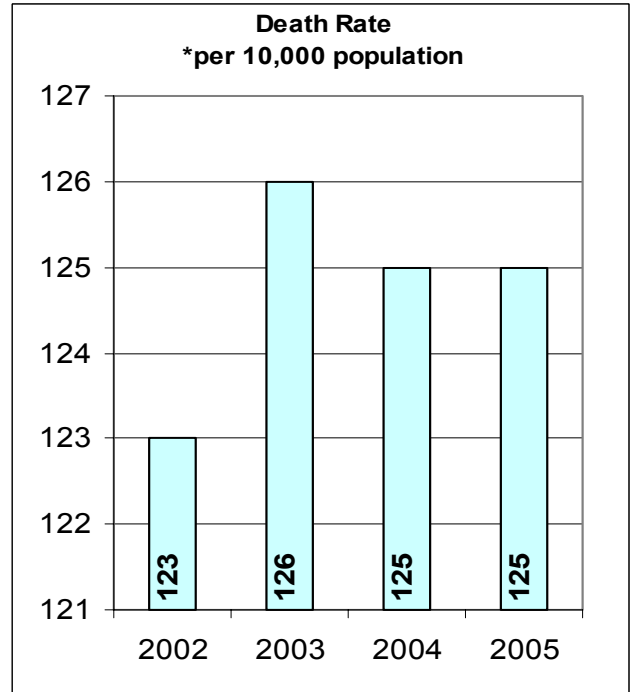
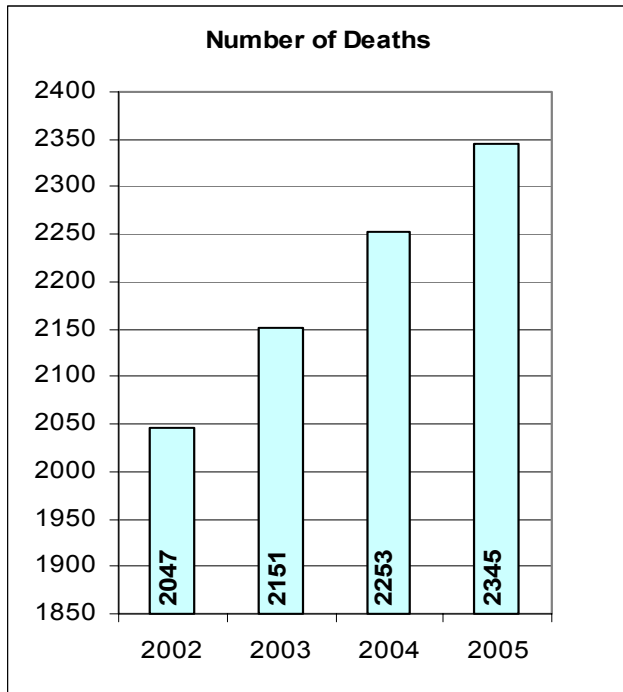


The number of unwed mothers has increased 20.3% from 2002 to 2005; however the rate of unwed mothers per 100 live births has only increased 6.6% during that period of time.

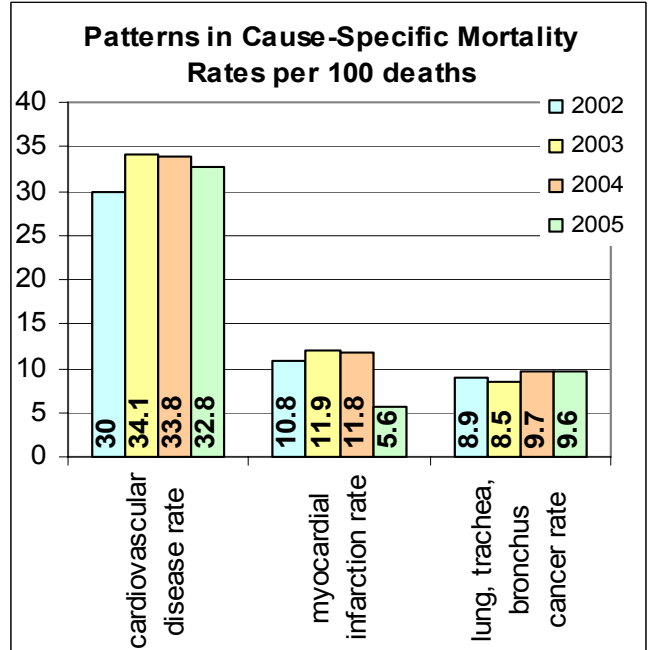
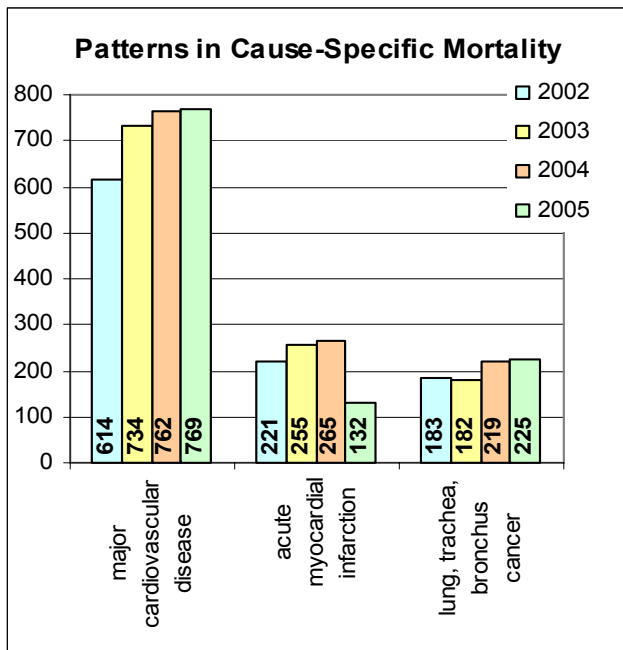
The number of mothers 19 or under had decreased from 2002 – 2004 but increased in 2005; the number increased 11.8% from 2002 to 2005. However, due to the increase in the number of births in 2005, the rate of unwed mothers per 100 live births has marginally decreased by 1.2% during that period of time.

The number of low birthweight babies had been increasing from 2002 – 2004; however it has decreased in 2005. From 2004 to 2005, it has decreased 8.9%. The rate of low birthweight babies per 100 live births had remained constant from 2002 – 2004 but it has decreased 13.2% in 2005.

The number and rate of fetal mortality had remained fairly constant from 2002 to 2004. However, the number of fetal deaths significantly increased from 2002 to 2005 by 58%. The fetal death rate had been remaining fairly constant (slight reduction) but increased 27.3% from 2002 to 2005 and increased 52.7% from 2004 to 2005.

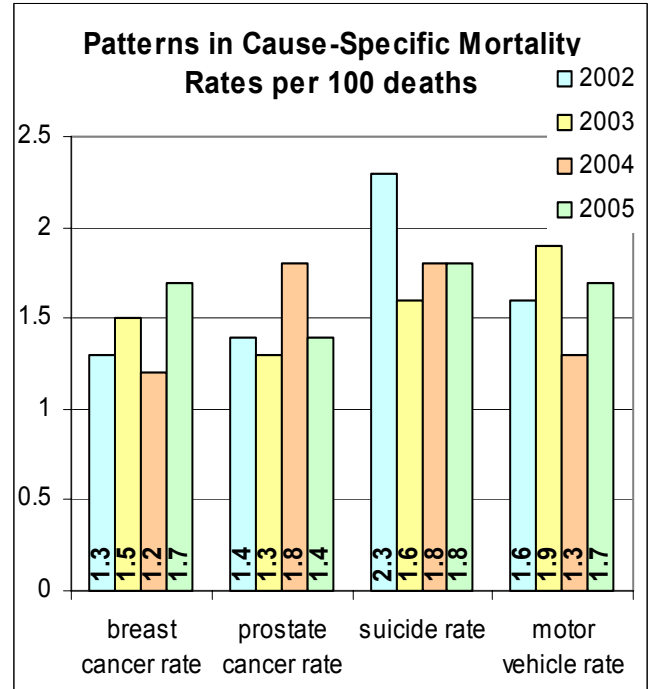
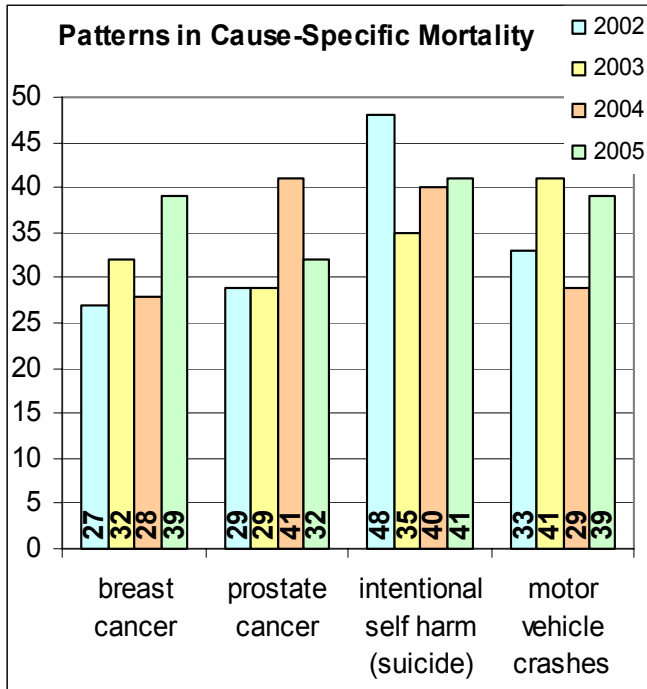


The number of deaths has increased 14.6% from 2002 to 2005; however, the death rate has remained fairly constant (due to the increase in population) and has only increased 1.7% in that period of time.



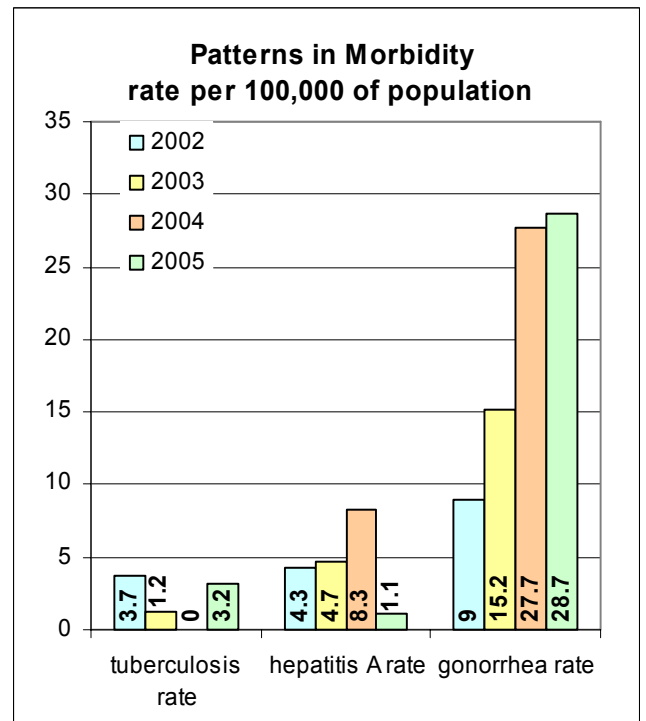
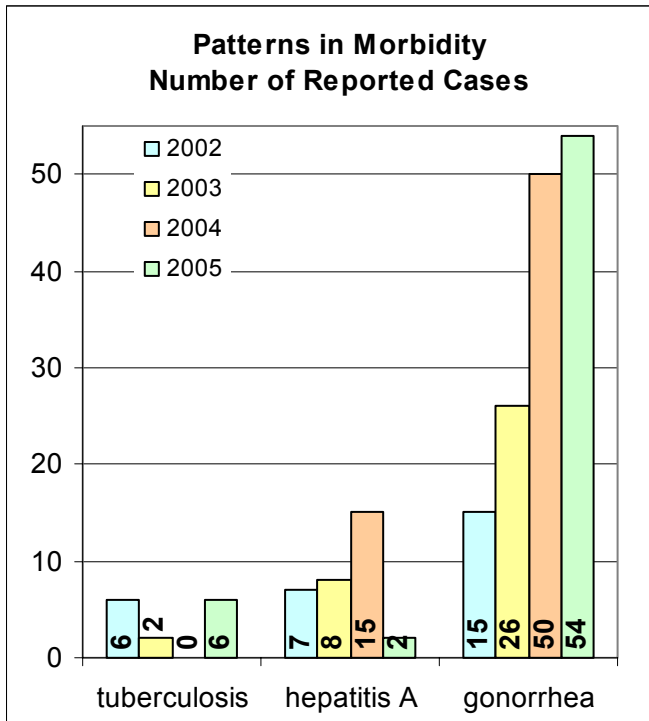
The number of deaths from cardiovascular disease and lung, trachea, bronchus cancer has increased from 2002-2005; 25.2% and 23% respectively. The number of deaths from myocardial infarction had increased from 2002 – 2004; however, it decreased significantly in 2005 by 40.3%

The rate of death for cardiovascular disease, and lung, trachea, bronchus cancer had a slight decrease in 2005 (due to the increase in the number of deaths); they decreased from 2004 by 3% and 1% respectively. The rate of death from myocardial infarction decreased significantly from 2004 to 2005 by 52.5%.



The number of deaths from breast cancer had been remaining relatively constant but increased 39.3% from 2004 to 2005. The number of deaths from prostate cancer increased sharply in 2004 but has increased slightly in 2005 compared to 2002 and 2003; it has increased 10% from 2002. The number of deaths from suicide has varied from 2002 to 2004, the past three years has seen a continued increase in the number. From 2003 to 2005, the number of deaths has increased 17%. The number of deaths from motor vehicle crashes has also varied from 2002 to 2005; the number from 2004 to 2005 has increased 34.5%.

The rate of death from breast cancer has varied from 2002 – 2005 with an overall increase of 30.8% during that time. The rate of death from prostate cancer increased sharply in 2004 but has remained constant in 2005 compared to 2002 and 2003. The rate of death from suicide has varied in four years but has remained constant for the past two years. The rate of death from motor vehicle crashes has varied with a 6% increase from 2002 to 2005 and a 30.8% increase from 2004 to 2005.



The number of tuberculosis cases consistently fluctuates; from six confirmed cases in 2005 to zero confirmed cases in 2004. The number of hepatitis A cases had been consistently increasing but saw a significant decrease of 86.7% in 2005 compared to 2004. The number of cases of gonorrhea has consistently increased with a significant increase in 2004 and another increase in 2005. In 2005, the number of cases increased 260% compared to 2002 and increased 8% compared to 2004.

As noted above for the number of confirmed tuberculosis cases, the rate of reported cases consistently fluctuates from year to year. The rate of hepatitis cases saw a significant decrease of 86.7% from 2004 to 2005. The rate of gonorrhea has increased in 2005; 218.8% compared to 2002 and a slight increase of 3.6% compared to 2004.



Fiscal Year 2005 – 2006 Annual Report