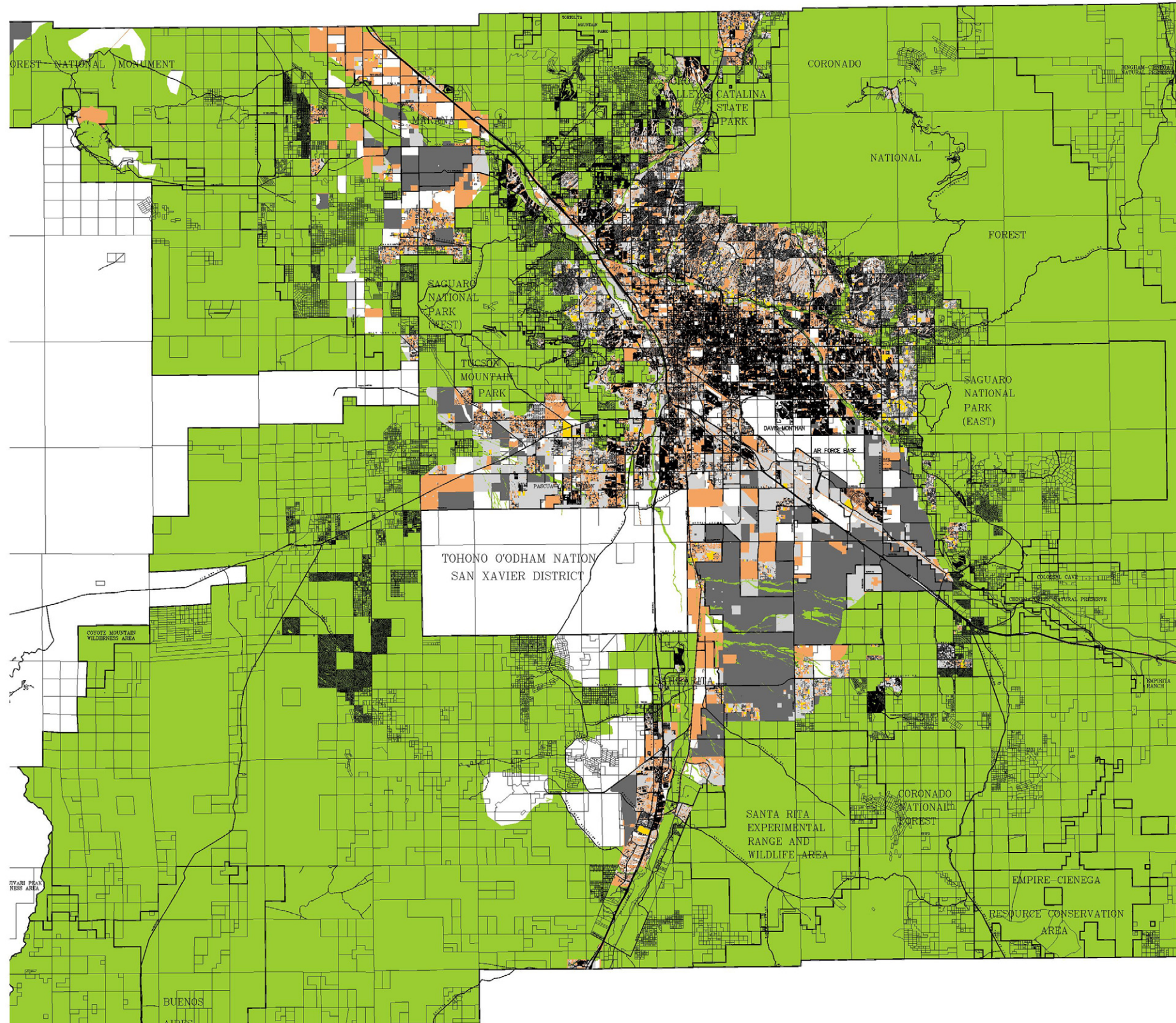









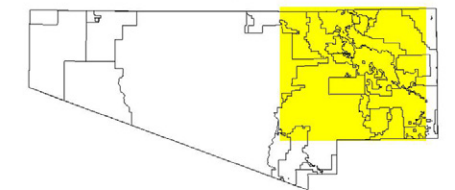


Vacant Parcels, Improvements on 5+ Acres or Less than \$10,000 Outside the CLS



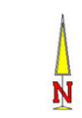
-  Parcel Lines
-  Administrative Boundaries
-  Major Streets
-  Eastern Pima County Conservation Lands System
2,006,028 Acres (3,134 Square Miles)
-  Area Outside Conservation Lands System
477,151 Acres (746 Square Miles)
-  Vacant Non-federal Non-state Land
62,526 Acres (98 Square Miles)
-  Vacant State Trust Land
71,487 Acres (112 Square Miles)
-  Residential Improvements on 5 Acres +
4,492 Acres (7 Square Miles)
-  Full Cash Value Improvements < \$10,000
61,645 Acres (96 Square Miles)

Pima County Index Map



Index Map Scale 1:1,500,000

This document is prepared for the use of the Department of Transportation and is not intended for use by any other agency. The Department of Transportation is not responsible for the accuracy or completeness of the information contained herein. The Department of Transportation is not responsible for the accuracy or completeness of the information contained herein.



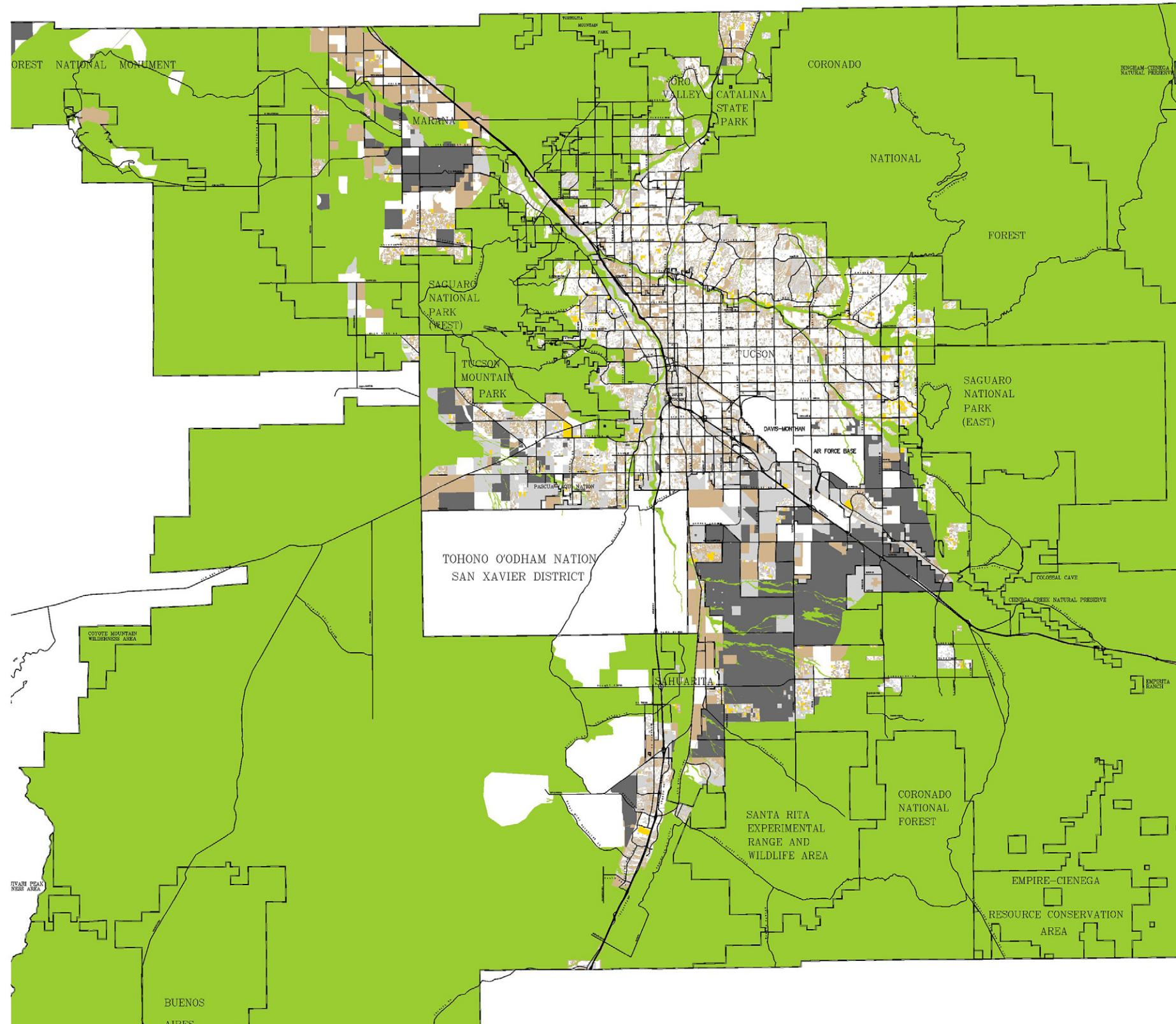
Scale 1:10,000










Pima County Technical Services
301 South First Avenue - 4th Floor
Tucson, Arizona 85724-1001
(520) 243-4535 - FAX (520) 243-3249
http://www.pima.gov

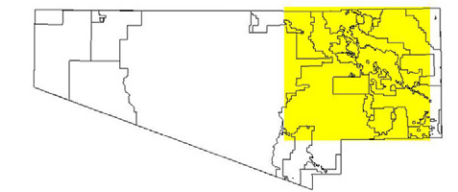


Vacant Parcels, Improvements on 5+ Acres or Less than \$15,000 Outside the CLS



-  Administrative Boundaries
-  Major Streets
-  Eastern Pima County Conservation Lands System
2,006,028 Acres (3,134 Square Miles)
-  Area Outside Conservation Lands System
477,151 Acres (746 Square Miles)
-  Vacant Non-federal Non-state Land
62,526 Acres (98 Square Miles)
-  Vacant State Trust Land
71,487 Acres (112 Square Miles)
-  Residential Improvements on 5 Acres +
4,492 Acres (7 Square Miles)
-  Full Cash Value Improvements < \$15,000
63,541 Acres (99 Square Miles)

Pima County Index Map



Index Map Scale 1:1,500,000

No warranty is made by the County of Pima for the use of the information contained herein for purposes other than those intended. The County of Pima is not responsible for any errors or omissions in this information. The County of Pima is not responsible for any damages or losses resulting from the use of this information. The County of Pima is not responsible for any actions taken based on this information.



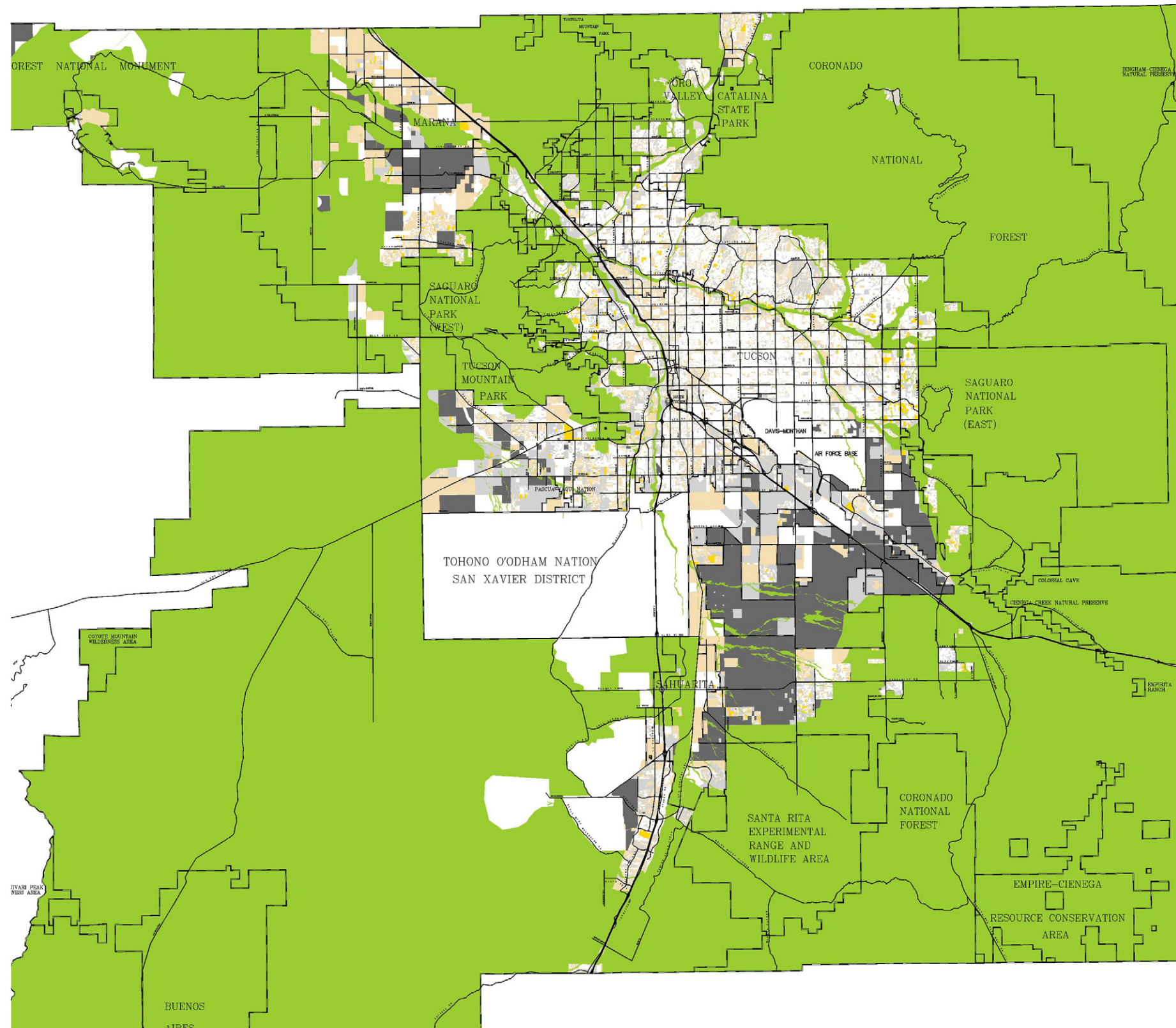
Scale 1:50,000











Pima County Technical Services
201 South Lane Avenue - 3rd Floor
Tucson, Arizona 85711-1201
©2014 Pima County Department of Transportation
10/14/2014 10:14 AM

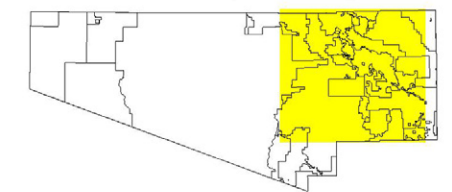


Vacant Parcels, Improvements on 5+ Acres or Less than \$20,000 Outside the CLS



-  Administrative Boundaries
-  Major Streets
-  Eastern Pima County Conservation Lands System
2,006,028 Acres (3,134 Square Miles)
-  Area Outside Conservation Lands System
477,151 Acres (746 Square Miles)
-  Vacant Non-federal Non-state Land
62,526 Acres (98 Square Miles)
-  Vacant State Trust Land
71,487 Acres (112 Square Miles)
-  Residential Improvements on 5 Acres +
4,492 Acres (7 Square Miles)
-  Full Cash Value Improvements < \$20,000
65,769 Acres (103 Square Miles)

Pima County Index Map



Index Map Scale 1:1,500,000

The information on this map was prepared by the Pima County Department of Transportation, Planning and Economic Development Division. It is provided for informational purposes only and does not constitute a warranty of any kind. The user assumes all responsibility for the use of this information. Pima County Department of Transportation, Planning and Economic Development Division. All rights reserved. No part of this publication may be reproduced without the prior written permission of the Pima County Department of Transportation, Planning and Economic Development Division.



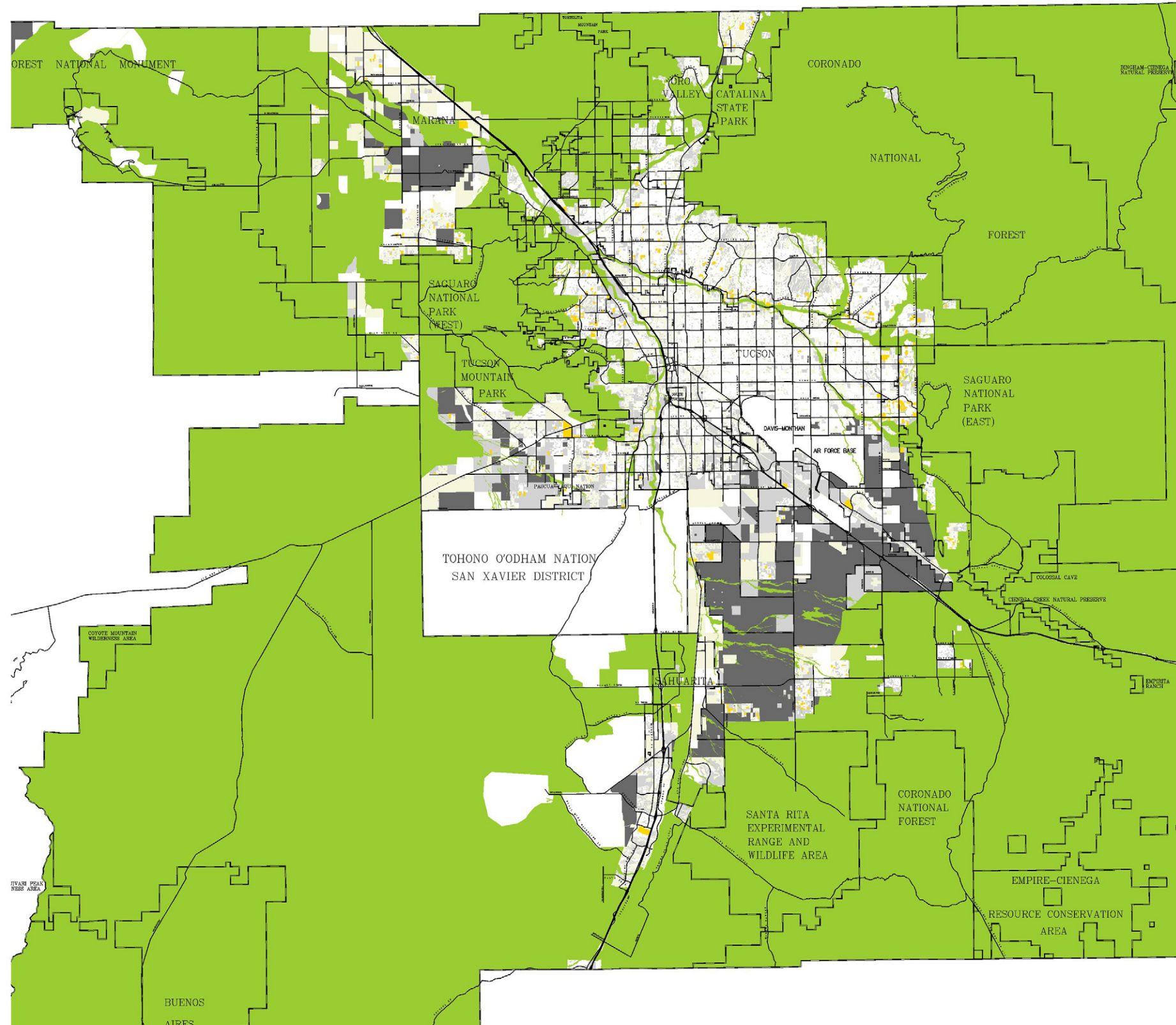
Scale 1:100,000











Pima County Technical Services
2500 South Avenue - 4th Floor
Tucson, Arizona 85710-1287
©2014 Pima County - PLS-0000000-000
Map of Vacant Land Improvements

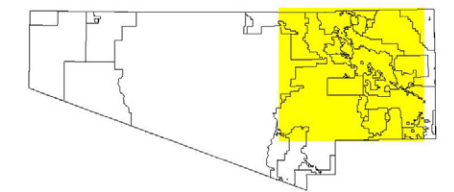


Vacant Parcels, Improvements on 5+ Acres or Less than \$25,000 Outside the CLS



-  Administrative Boundaries
-  Major Streets
-  Eastern Pima County Conservation Lands System
2,006,028 Acres (3,134 Square Miles)
-  Area Outside Conservation Lands System
477,151 Acres (746 Square Miles)
-  Vacant Non-federal Non-state Land
62,526 Acres (98 Square Miles)
-  Vacant State Trust Land
71,487 Acres (112 Square Miles)
-  Residential Improvements on 5 Acres +
4,492 Acres (7 Square Miles)
-  Full Cash Value Improvements < \$25,000
67,641 Acres (106 Square Miles)

Pima County Index Map



Index Map Scale 1:1,500,000

This document is the property of Pima County. It is loaned to you for your use only. It is not to be distributed, copied, or otherwise used without the express written permission of Pima County. If you have any questions, please contact the Pima County Department of Transportation, Technical Services, at (520) 795-1231. © 2014 Pima County, Arizona. All rights reserved.



Pima County Technical Services
3770 West Alameda - 4th Floor
Tucson, Arizona 85711-1231
© 2014 Pima County, Arizona
Map Area: 8/1/2014

