

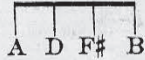
SM6454

Dedicated to Miss Elaine F. Zohrlaut

# Brown Eyes-Why Are You Blue?

Uke. arr. by Jeanne Gravelle

Tune-a-Uke



Words by  
AL. BRYAN

Music by  
GEO. W. MEYER

Moderato

Piano

Voice

Till ready

*p*

Tear-drops dim the light, in you eyes so bright,  
Nev - er try to drown all your sor-rows down,

Just like rain-drops dim the win-dow - pane. When your eyes are blue,  
Op - en up. your heart and they will go. When the sun comes in,

some-thing's wrong with you, Let me kiss the love-light back a - gain.  
that's when they be - gin, Dis-ap-pear-ing like the Ap-ril snow.

Chorus

Brown eyes why are you blue?— Brown

The first system of the chorus features a vocal line in treble clef with a key signature of one sharp (F#) and a common time signature. The lyrics are "Brown eyes why are you blue?— Brown". Above the vocal line are four guitar chord diagrams. The piano accompaniment is in the same key and time, with a dynamic marking of *p-f* (piano-forte) at the beginning. The piano part consists of chords in the right hand and a bass line in the left hand.

eyes, what can I do?— Don't keep the sun - shine

The second system continues the chorus with the lyrics "eyes, what can I do?— Don't keep the sun - shine". The musical notation follows the same format as the first system, with a vocal line and piano accompaniment.

out of your eyes— Say, if you are wise,— you'll stop your cry-

The third system of the chorus has the lyrics "out of your eyes— Say, if you are wise,— you'll stop your cry-". The musical notation continues with a vocal line and piano accompaniment.

- ing. Brown eyes, look up and smile,—

The fourth and final system of the chorus on this page has the lyrics "- ing. Brown eyes, look up and smile,—". The musical notation concludes with a vocal line and piano accompaniment.

Smil - ing is al - ways in style. ————— Tears on - ly add —

— to your blues and troub - les, Troub - les will float — a - way

just like , bub - bles. You know, hon - est and true, //

Brown eyes should nev - er be blue. ————— blue. —————

1. 2. D.S.