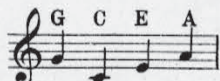


SM6245

MAMIE

Uke arr. by Jeanné Gravelle

Words by
HARRY B. SMITH



Nearest player 4th 3rd 2nd 1st

Music by
JACK SHILKRET

Moderato

Piano *f*

Till ready

Voice

There's a lit - tle girl who likes to keep you guess - ing,
Mam - ie you've a smile that is an in - vi - ta - tion,

p

Like a moth a - round a flame she'll play. _____
Some-day when we two are all a - lone. _____

With a smile she lures, Till you fan - cy she is
 If my lov - ing arms, Find they can't re - sist your

yours, Then sends you on your way.
 charms, The fault is all your own.

Chorus

So I say "Mam - ie _____ don't blame me, _____ If you tempt -

me so. _____ Your lips _____ say "won't you?"

— Your eyes laugh — and say "why don't you?" I warn —

This system contains the first line of music. The vocal line is on a single staff with lyrics. The piano accompaniment is on two staves (treble and bass clef). There are three guitar chord diagrams above the vocal line. Handwritten checkmarks are present above the notes 'a' and 'a' in the vocal line.

— you, Mam - ie, — With kiss - es — you'll pay

This system contains the second line of music. The vocal line is on a single staff with lyrics. The piano accompaniment is on two staves. There are three guitar chord diagrams above the vocal line.

me. Mam - ie — what - ev - er I do — There's

This system contains the third line of music. The vocal line is on a single staff with lyrics. The piano accompaniment is on two staves. There are five guitar chord diagrams above the vocal line.

no one to blame — but you!" — you!" —

My mamma *I say there's*

This system contains the fourth line of music. The vocal line is on a single staff with lyrics. The piano accompaniment is on two staves. There are six guitar chord diagrams above the vocal line. The system ends with a double bar line and repeat signs. The piano part has a 'D.S.' marking.