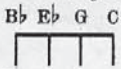


SM 5718

Tune Uke as follows:



School Day Sweethearts

Words and Music by
GLEN EDWARDS

Moderato

Piano introduction musical notation in 3/4 time, starting with a mezzo-forte (mf) dynamic. The melody is in the right hand, and the bass line is in the left hand.

Chord diagram row 1: Bb, C# dim., Bb, C# dim., Bb, C7, F7, Bb, G dim.

School ways, love days, I'm long - ing, dear, for
 It seems in dreams I'm roam - ing, dear, with

Piano accompaniment for the first line of lyrics, marked mezzo-piano (mp). The right hand plays chords and the left hand plays a steady bass line.

Chord diagram row 2: F7, D dim., F7

you, ——— Back to by - gone days when you
 you, In the gloam - ing, just as we

Piano accompaniment for the second line of lyrics, featuring a melodic flourish in the right hand.

Chord diagram row 3: Eb, F7, Bb, D7, Gm, D7, Gm

loved me too. ——— When we both were kids at school,
 used to do. ——— In the moon-light's mel - low glow,

Piano accompaniment for the third line of lyrics, concluding the piece with sustained chords in the right hand.

C7 F C7 F C7 C dim.

There we vowed we ne'er would part; Let us live the
 There you gave your heart to me; Let's go back to

C7 C dim. C7 F7 riten. F Aug.

Gold - en Rule and be my old sweet - heart.
 long a - go, to days that used to be.

CHORUS Bb a tempo G Aug. G7 C7

Can't we be the same school-day sweet - hearts? Let us wan - der back once

mf-f

C7 F7 Gm F7

more, — Thru the lit - tle lane where we part - ed,

B \flat C \sharp dim. B \flat

Back to child-hood days of yore. — You were my own

B \flat G Aug. G7 C7

sun - bon - net sweet - heart, In your ging - ham gown some

C7 Cm E \flat E \flat m B \flat G7

how. — When I looked at you I knew you loved me too,

C7 E \flat m F7 B \flat C \sharp dim. E \flat F7 B \flat F Aug. B \flat

Let's be school-day sweet - hearts now. — now. —