

A WORTH WEIL SONG

Everywhere You Go

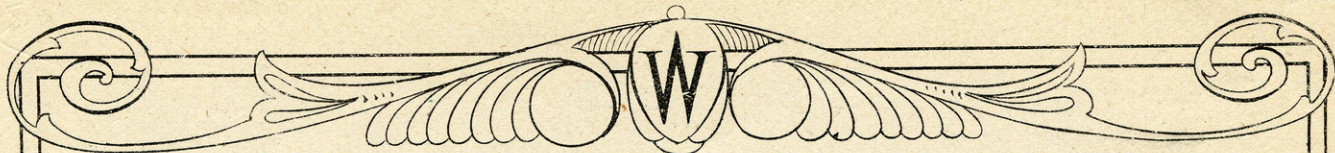
by
Joe Goodwin
Mark Fisher
Larry Shay



MILTON WEIL MUSIC CO. INC.
54 W. Randolph St. CHICAGO.
MADE IN U.S.A.



Randley Studios
CHICAGO



I'd Love To Call You My Sweetheart

Piano Tune Uke. in Eb

Bb Eb G C

A Rube Bennet Arrangement

By { JOE GOODWIN
LARRY SHAY
& PAUL ASH

I'd love to call you my sweet - heart, — Hon - est I

p-mf

love you I do, — I cry for you in the

day time, — When I sleep I dream of you, —

Copyright MCMXXVI by Milton Weil Music Co., Chicago, Ill.

International Copyright Secured

Made IN U. S. A.

All Rights Reserved

COPIES ON SALE WHEREVER MUSIC IS SOLD
The MILTON WEIL MUSIC CO. Chicago, Ill.
This Number can also be had for you Phonograph or Player Piano

SM7315

Everywhere You Go

A. Rube Bennett Arrangement

Piano Tune Uke. in D
A D F# B
Place capo across 1st fret.

By
LARRY SHAY
JOE GOODWIN
MARK FISHER

Moderato

Musical notation for the first system, featuring piano accompaniment with a 'p.' dynamic marking.

Musical notation for the second system, including a 'Slowly' tempo change and a 'fz' dynamic marking.

Slowly with expression

Cheeks like the ros - es, Teeth like the pearl, Eyes with the
 Kiss - es like hon - ey. Fresh as the dew, Laugh - ter like
 heav - en's blue, You made me love you,
 sil - v'ry bells, You are so per - fect,

Musical notation for the first verse, including guitar chord diagrams and lyrics.

heav - en's blue, You made me love you,
 sil - v'ry bells, You are so per - fect,

Musical notation for the second verse, including guitar chord diagrams and lyrics.

I'm in a whirl, You won-der-ful mar-vel-ous beau-ti-ful girl;—
 One of the few, You won-der-ful mar-vel-ous girl I love you;—

Tenderly
CHORUS (Open)

Ev - 'ry where you go, Sun - shine

fol - lows you, Ev - 'ry where you

go, Skies are al - ways blue,

Chil - dren love you they seem to know,

You bring ros - es out of the snow, The whole world

says "Hel - lo," Ev - 'ry where you

go, go.

WORTH-WHILE SONGS

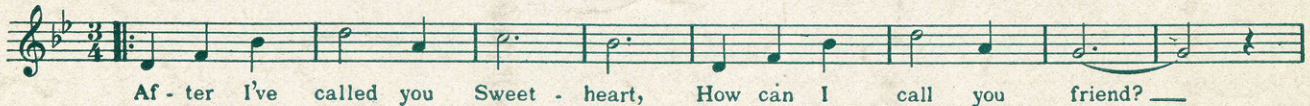
HIGHWAYS ARE HAPPY WAYS



HIGH - WAYS — ARE HAP - PY WAYS — when they lead the way to home, —

Copyright MCMXXVII by Milton Weil Music Co., Chicago, Ill.

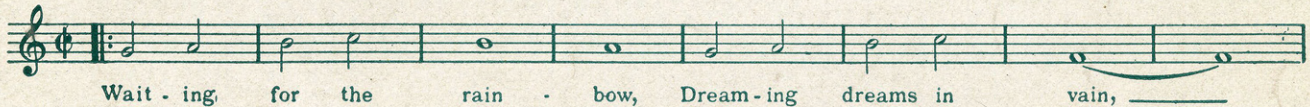
AFTER I'VE CALLED YOU SWEETHEART



Af - ter I've called you Sweet - heart, How can I call you friend? —

Copyright MCMXXVII by Milton Weil Music Co., Chicago, Ill.

WAITING FOR THE RAINBOW



Wait - ing for the rain - bow, Dream - ing dreams in vain, —

Copyright MCMXXVII by Milton Weil Music Co., Chicago, Ill.

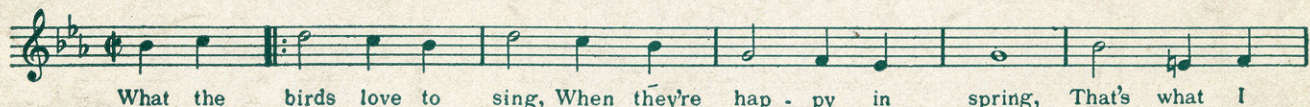
THEN YOU'LL COME BACK TO ME



When you learn in your dreams just what lone - some - ness means, — Then you'll come

Copyright MCMXXVII by Milton Weil Music Co., Chicago, Ill.

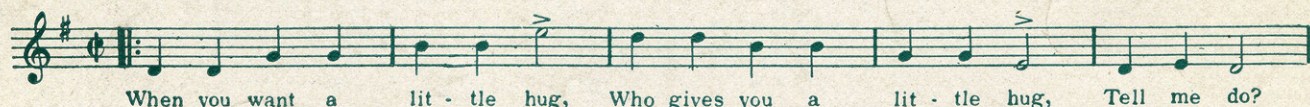
THAT'S WHAT I THINK OF YOU



What the birds love to sing, When they're hap - py in spring, That's what I

Copyright MCMXXVI by Milton Weil Music Co., Chicago, Ill.

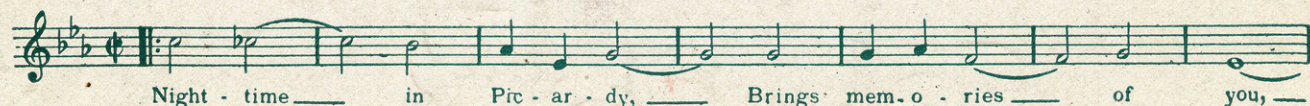
WHO IS YOUR WHO



When you want a lit - tle hug, Who gives you a lit - tle hug, Tell me do?

Copyright MCMXXVII by Milton Weil Music Co., Chicago, Ill.

NIGHT TIME IN PICARDY



Night - time — in Pic - ar - dy, — Brings mem - o - ries — of you, —

Copyright MCMXXVII by Milton Weil Music Co., Chicago, Ill.