

~ WITH PIANO-BELL ACCOMPANIMENT ~

Bells of Hawaii



by
Billy Heagney

WITH UKULELE
ARRANGEMENT

FRED K. STEELE
INCORPORATED
745 SEVENTH AVENUE
NEW YORK CITY

MADE IN
U.S.A.

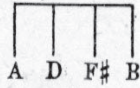
perret

SM7257

2

BELLS OF HAWAII

Tune Ukulele
or Banjulele Banjo



Ukulele Arr. by
MAY SINGHI BREEN
"The Ukulele Lady"

By BILLY HEAGNEY

Piano

Valse moderato

The first system of the piano accompaniment is in 3/4 time with a key signature of one sharp (F#). It features a melody in the right hand and a bass line in the left hand. The melody includes three instances of a bell-like sound effect, indicated by upward-pointing arrows and the word "Bell". The left hand has markings for "L.H." and "Ped." (pedal). The tempo is marked "Valse moderato".

The second system of the piano accompaniment continues the melody and bass line. It includes more bell-like sound effects and dynamic markings like "p" (piano) and "Ped." (pedal). The notation shows a continuation of the rhythmic and melodic patterns established in the first system.

Voice

The voice part consists of a single melodic line with lyrics. The lyrics are: "Mem - o - ry car - ries me o - ver the foam, / Hear me sigh why did I wan - der a - way,". The music is in 3/4 time with a key signature of one sharp. There are three guitar chord diagrams shown above the first three measures of the voice line. The piano accompaniment below the voice part is marked with a piano dynamic "p".

4

Copyright 1927 by Fred. K. Steele, Inc. 745 Seventh Ave. N.Y.C.

International Copyright Secured

Made in U. S. A.

All Rights Reserved

And it seems, in my dreams I'm
Now I'm blue, lone - some too A -

wan - der - ing home, Sil - vry stars
wait - ing the day, When I'll say,

shin - ing a - bove, Steel gui - tars croon - ing of love,
I missed you dear, Kiss a - way each lit - tle tear,

Tales they tell weave a spell o'er me:
Heart of mine, for you I'm yearn - ing,

Chorus

When I hear those bells of Ha - wa - ii Call - ing

soft - ly ov - er the sea, Then they seem to

tell me Ha - wa - ii, Of the one who's wait - ing for

me, A - gain I see two

dream - y eyes, While some-one sighs 'neath

This system contains the first two staves of music. The top staff is the vocal line, and the bottom two staves are the piano accompaniment. The key signature is one sharp (F#). The lyrics are "dream - y eyes, While some-one sighs 'neath". There are guitar chord diagrams above the first and second measures of the vocal line.

moon - lit skies, When I hear those bells of Ha -

This system contains the next two staves of music. The lyrics are "moon - lit skies, When I hear those bells of Ha -". The piano accompaniment includes markings for "Bell" and "L.H." (Left Hand) in the right and left staves respectively.

wa - ii Call - ing soft - ly ov - er the

This system contains the next two staves of music. The lyrics are "wa - ii Call - ing soft - ly ov - er the". The piano accompaniment includes markings for "gva. Bell" and "L.H." in the right and left staves respectively.

sea. When I sea.

This system contains the final two staves of music. The lyrics are "sea. When I sea.". The piano accompaniment includes markings for "Bell" and "L.H." in the right and left staves respectively, and a "Ped.*" (pedal) marking in the bass staff.

Ev'ry Little While

Ukulele Arr. by
MAY SINGHI BREEN

Tune Ukulele

G C E A

By
FRED K. STEELE
and
BILLY HEAGNEY

Ev-'ry lit-tle while I find I'm think-ing of you,

Won-der if you ev - er stop and think of me,

Ev-'ry lit-tle while I ask the stars a - bove you

Copyright MCMXXVI by Fred K. Steele Inc. Music Publisher
745 Seventh Ave., New York City

International Copyright Secured

All Rights Reserved

Made In U. S. A.