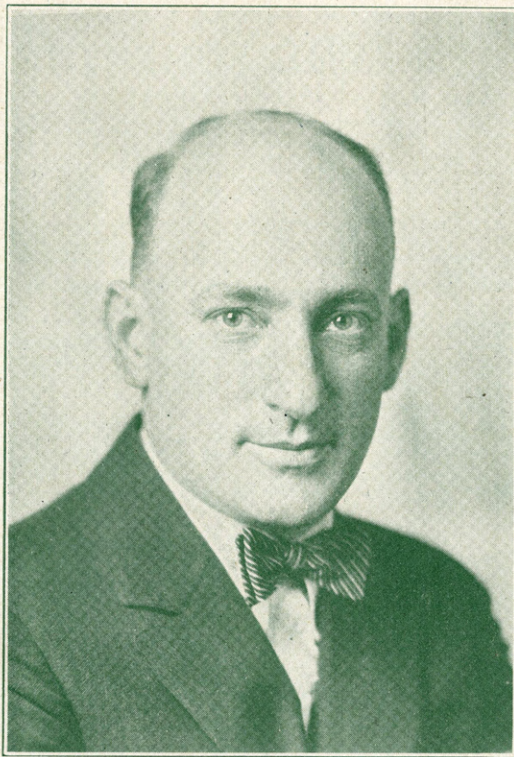


752

PROMISE

BALLAD FOX TROT
WITH UKULELE ARRANGEMENT



Lyric by
**MAURICE
J. GUNSKY**

Music by
**EDDIE
WILLIS**

Featured by
MAURICE J. GUNSKY
Victor Recording Artist and Radio Star

MADE IN
U.S.A.

WEEKS & WINGE
INC.
Music Publishers
SAN FRANCISCO

Sumatra

Words & Music by
HAROLD WEEKS

CHORUS

Sum - at - ra Sum - at - ra Where

p-f

Copyright MCMXXVI by Weeks & Winge Inc. San Francisco

International Copyright Secured

Made in U.S.A.

All Rights Reserved

Tune Uke
G C E A

Ukulele Arr. by
Otis De Lay

MAYBE SOMETIME

Words and Music by
CHARLES NELCKE

Chorus

May - be some - time you will be lone - ly

p-f

International Copyright Secured

Copyright MCMXXVI by Charles Nelcke, San Francisco
Copyright transferred MCMXXVI to Weeks & Winge, Inc., San Francisco

All Rights Reserved

Say! Wallie

By NORMAN NATHANSON
and CHARLES BORGEL

CHORUS

Wal - lie why don't you steal a kiss Say! Wal - lie

p-f

International Copyright Secured

Copyright MCMXXVI by WEEKS & WINGE, Inc., San Francisco
Made in U. S. A.

All Rights Reserved

SM7102

PROMISE

Lyric by MAURICE J. GUNSKY

Tune Uke
Bb Eb G C

Uke arr. by
Otis DeLay

Music by EDDIE WILLIS

Moderato

The piano introduction consists of two staves. The right hand plays a series of chords and single notes, while the left hand provides a steady bass line. The tempo is marked 'Moderato'.

The first vocal entry is on a single staff with the lyrics: "I can't be - Now that I've". The piano accompaniment is on two staves below. The tempo is marked 'Till ready'.

The second vocal entry is on a single staff with the lyrics: "lieve that you love me, It seems too good to be looked in - to your eyes, I could - n't bear that we". The piano accompaniment is on two staves below.

The third vocal entry is on a single staff with the lyrics: "true, I'm so a - fraid that I'm dream - part, Words fail when I try to tell". The piano accompaniment is on two staves below.

Copyright MCMXXVI by WEEKS & WINGE Inc. San Francisco

International Copyright Secured

Made in U. S. A.

All Rights Reserved

ing, you, Some one will wake me, and you'll for - sake me.
 How I a - dore you, my love's all for you.

CHORUS
 Prom - ise, Prom - ise, You'll give your

heart to me, (Please won't you) Prom ise,

Prom - ise, Be - cause I prize you, I i - dol -

Eb7 Fm

ize you In - to a heart filled with sad - - ness,

Detailed description: This system contains the first two lines of music. The vocal line (top staff) begins with the lyrics 'ize you In - to a heart filled with sad - - ness,'. Above the first two measures are guitar chord diagrams for Eb7 and Fm. The piano accompaniment (middle and bottom staves) features a steady bass line and chords in the right hand.

F7 Bb7 Bb7 F7 Bb7 Eb

You've brought a whole world of glad - - ness (So won't you) Prom - -

Detailed description: This system contains the third and fourth lines of music. The vocal line continues with 'You've brought a whole world of glad - - ness (So won't you) Prom - -'. Above the vocal line are guitar chord diagrams for F7, Bb7, Bb7, F7, Bb7, and Eb. The piano accompaniment continues with similar harmonic support.

G7 Cm. F7 Bb7

ise, Prom - ise, All of your love to

Detailed description: This system contains the fifth and sixth lines of music. The vocal line has 'ise, Prom - ise, All of your love to'. Above the vocal line are guitar chord diagrams for G7, Cm., F7, and Bb7. The piano accompaniment features a more active right hand with eighth notes.

1 Eb 2 Eb

me. me,

Detailed description: This system contains the seventh and eighth lines of music. The vocal line has 'me. me,'. Above the first two measures are guitar chord diagrams for Eb and Eb. The piano accompaniment concludes with a final chord and a double bar line.

SLEEPY BYE

By CARL WINGE

LULLABY

Musical score for 'Sleepy Bye' featuring a vocal line and piano accompaniment. The vocal line is in G major, 3/4 time, with lyrics: 'Sleep - y bye, Sleep - y bye, Go to sleep - y bye,'. The piano accompaniment is in G major, 3/4 time, with a dynamic marking of *p*. The score includes guitar chord diagrams above the vocal line.

International Copyright Secured

Copyright MCMXXV by WEEKS & WINGE, Seattle, Wash
Made in U.S.A.

All Rights Reserved

KISS ME And Then Say Good-Night

Words and Music by
GENE JOHNSTON
& HERB WIEDOFT

Musical score for 'Kiss Me And Then Say Good-Night' featuring a vocal line and piano accompaniment. The vocal line is in G major, 3/4 time, with lyrics: 'Kiss me and then say good - night dear, Shad - ows have'. The piano accompaniment is in G major, 3/4 time, with a dynamic marking of *p*. The score includes guitar chord diagrams above the vocal line.

International Copyright Secured

Copyright MCMXXVI by Gene Johnston, Los Angeles, Calif.
Copyright transferred MCMXXVI to Weeks & Winge, Inc., San Francisco

All Rights Reserved

New Moon

Ballad Foxtrot

Words and Music by
ANSON WEEKS
GEORGE TYNER and
HERBERT B. MARPLE

Musical score for 'New Moon' featuring a vocal line and piano accompaniment. The vocal line is in G major, 4/4 time, with lyrics: 'New moon keep shin - ing I've'. The piano accompaniment is in G major, 4/4 time, with a dynamic marking of *p-f*. The score includes guitar chord diagrams above the vocal line.

International Copyright Secured

Copyright MCMXXVI by WEEKS & WINGE, Inc., San Francisco

Made in U.S.A.

All Rights Reserved