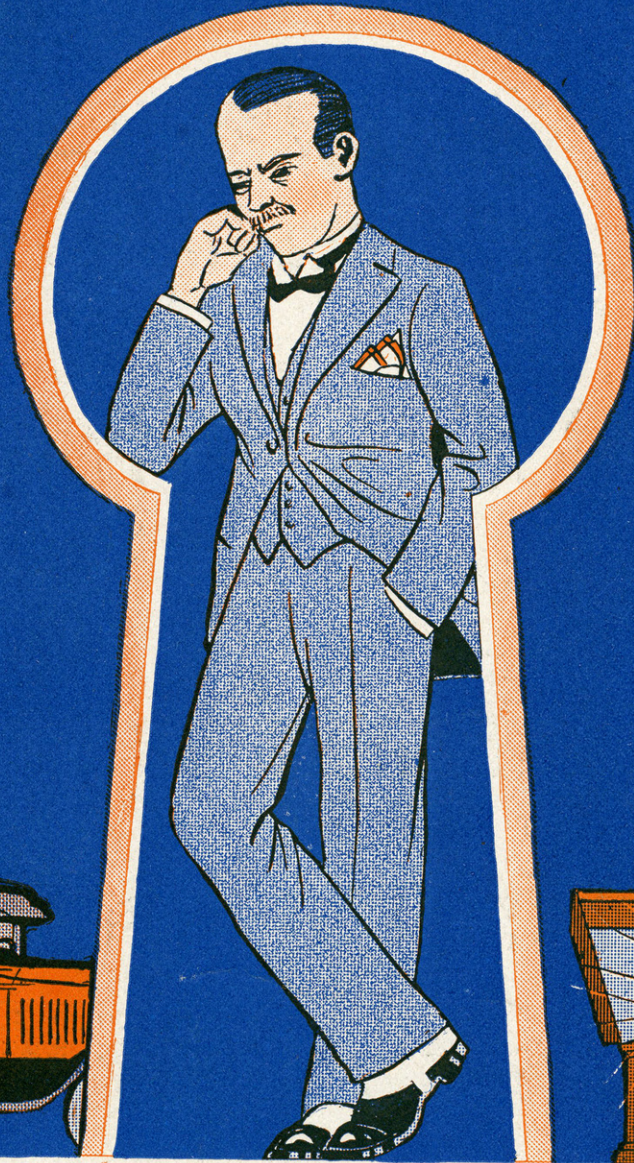
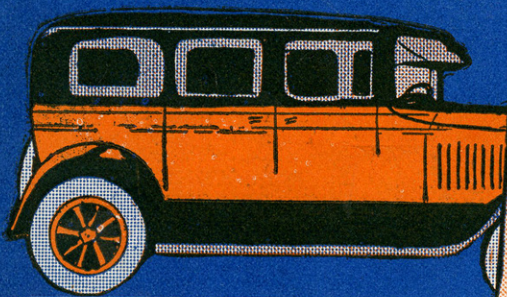


POOR PAPA

(HE'S GOT NOTHIN' AT ALL)



UKULELE ARRANGEMENT



Words by
BILLY ROSE

Music by
HARRY WOODS

"MAGS" WISNER



Irving Berlin, Inc.
MUSIC PUBLISHERS
1607 Broadway New York

MADE IN USA

SM 7098

POOR PAPA

(He's Got Nuthin' At All)

Words by
BILLY ROSE

Tune Ukulele

A D F# B

Music by
HARRY WOODS

Moderato

Piano

f

The piano introduction consists of two staves. The right hand plays a melody in treble clef with a key signature of one sharp (F#) and a time signature of 4/4. The left hand plays a bass line in bass clef. The tempo is marked 'Moderato' and the dynamic is 'f'.

fz *mf* *Vamp*

The piano continuation consists of two staves. It features a 'Vamp' section with a repeat sign. Dynamics include 'fz' and 'mf'.

VOICE

Don't get mar - ried don't get mar - ried, Said my friend Mc - Bride,
Then Mac cried: Oh what a life, I've got no chance at all,

p

The piano accompaniment for the first vocal line consists of two staves. The right hand plays chords in treble clef, and the left hand plays a bass line in bass clef. The dynamic is 'p'.

If you take a wife, You're out of luck for life,
Once a girl gets you, You'll look like I do too,

The piano accompaniment for the second vocal line consists of two staves. The right hand plays chords in treble clef, and the left hand plays a bass line in bass clef.

Ukulele Arr. by MAY SINGHI BREEN

Copyright MCMXXVI by IRVING BERLIN Inc., 1607 Broadway, N. Y. C.

...
THE
NUM
can
be h
for y
Phonog
or y
Play
Piar
...
...

He had all his lit - tle sons, and daugh - ters by his side, Like
Then he lined his chil - dren up, The short ones and the tall, And

Hap - py Hool - i - gan's six - teen kids, They all lined up and cried.
as they marched down the a - ven - ue, You should have heard them bawl.

CHORUS

Ma - ma's got shoes, ma - ma's got clothes, Ma - ma's got these and
Ma - ma eats ham, ma - ma eats lamb, Ma - ma eats bread and

p-f

ma - ma's got those, But poor pa - pa, poor pa - pa,
straw - ber - ry jam, But poor pa - pa, poor pa - pa,

He's got noth - in' at all. — Ma - ma goes here
 He eats noth - in' at all. — Ma - ma says Ooh

ma - ma goes there Ma - ma goes out to ev - 'ry af fair, But
 ma - ma says 'Ah' Ma - ma says boo and ma - ma says bah, But

poor pa - pa, poor pa - pa, He waits out in the hall, —
 poor pa - pa, poor pa - pa, He says noth - in' at all, —

Christ - mas comes and ma - ma gets The most ex - pen - sive
 Pa - pa bought a lim - ou - sine The most ex - pen - sive

frocks, kind, Pa - pa gets a neck - tie and a pair of ten cent
Now he wears a chauff - feur's suit and ma - ma rides be -

socks. hind. Ev - 'ry one cheers when ma ma ap - pears,
Ma - ma's got silk and sa - tin be - neath,

She's got dia - monds stuck in her ears, But poor pa - pa,
She's got gold in all of her teeth, But poor pa pa,

poor pa - pa, He's got noth - in' at all. —
poor pa pa, He's got no teeth at all. —



The Great Novelty Song Sensation "GIMME" A LITTLE KISS WILL "YA" HUH?

By ROY TURK
JACK SMITH &
MACEO PINKARD

CHORUS

"Boy" "Gim-me" a lit - tle kiss Will "Ya" Huh? What are "ya" gon - na miss
"Boy" "Gim-me" a lit - tle kiss Will "Ya" Huh? Must I go on like this
"Gir!" "Gim-me" a lit - tle coat Will "Ya" Huh? Sa - ble or mink or goat

p-f

Will "Ya" Huh? Gosh! oh gee! — Why do you re - fuse?
Will "Ya" Huh? Once a - gain a plea I'm gon - na make
Will "Ya" Huh? My poor hand is bare as an - y - thing

I can't see — what you've got to lose, Aw, "gim-me" a lit - tle squeeze
Tell me when — do I get a break, Aw, say that you're giv - in' in,
I could stand a brace - let or a ring, Aw, "gim-me" a lit - tle car

Copyright MCMXXVI by IRVING BERLIN Inc., 1607 Broadway, N.Y.C.
International Copyright Secured Made in U.S.A. All Rights Reserved

COPIES ON SALE WHEREVER MUSIC IS SOLD
This Number can also be had for your Phonograph and Player Piano