

NO FOOLIN'

F. ZIEGFELD'S
PRODUCTION

ZIEGFELD'S PALM BEACH GIRL

LYRICS BY
GENE BUCK & IRVING CAESAR
MUSIC BY
RUDOLF FRIML & JAMES F. HANLEY



Honey Be Mine
Every Little Thing You Do
Florida, The Moon And You
Wasn't It Nice
No Foolin

MADE IN
U.S.A.


HARMS
INCORPORATED
NEW YORK

65
NO FOOLIN'

ZIEGFFELD'S AMERICAN REVUE

OF

1926



(GLORIFYING THE AMERICAN GIRL)

STAGED BY
EDWARD ROYCE

LYRICS BY
GENE BUCK & IRVING CAESAR
MUSIC BY
RUDOLF FRIML & JAMES F. HANLEY

doney Be Mine
Every Little Thing You Do
Florida, The Moon And You
Wasn't It Nice
No Foolin

HARMS
INCORPORATED
NEW YORK

MADE IN U.S.A.

BY THE COMPOSER OF "AT DAWNING"

To my friend Rhys Morgan

MY DESIRE

Words by
NELLE RICHMOND EBERHART

Music by
CHARLES WAKEFIELD CADMAN
Op. 84, No. 2

Moderato con moto

Piano

mf

If one day some fair God should

mp

3

bend From Heav - en's blue And

smile up - on me as a friend - Will oft - en do, If

poco cresc.

dim.

mp

he should ask my heart's de - sire, He could not touch my breast with

Copyright MCMXX. V by HARMS Inc., N.Y.
International Copyright Secured

ALL RIGHTS RESERVED Including public performance for profit

HARMS, Inc. . . . 62 West 45th Street, N. Y. C.

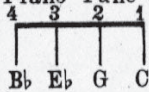
SM 7079

Palm Beach Nights

NO FOOLIN'

With Piano Tune Ukelele

Ukelele arr. by M. Zoltai



By GENE BUCK and
JAMES F. HANLEY

Moderato

Piano

f

p

Till ready

There's a cer-tain sweet-ie I just love and a-dore,—
When she goes to par-ties I just trail right a-long,—

The most at-trac-tive girl I've ev-er found,
And that is when I suf-fer most of all.

mf

Pret-ty, sen-ti-men-tal, per-son-al-i-ty ga-lore,
All the boys then flock a-round her, young, old, weak and strong,

But she's al-ways
I pre-tend to

fool - in' a - round: ———— You can see the
like it for a stall. ———— She has ways a -

moon-beams a - danc - in' in her eyes, Fas - ci - nat - ing, Cap - ti - vat - ing
bout her, you know just what I mean, It's called in the mov - ies "Sex Ap -

dear. Her fool-in' has me guess-in', ———— She can tan-ta-
peal? Now she don't know she has it, She's such a lit-tle

-lize, You can hear me coo - in' when she's near; ————
Queen, Plead - ing - ly I tell her how I feel; ———— *poco rit*

Refrain

p-mf

"No fool - in', Who do you love? — Who are
 "No fool - in', 'round with those sheiks — And es -

you think - in' of? — No fool - in'!
 pec - 'lly an - tiques! — No fool - in'!

No fool - in', Who do you miss — When
 No fool - in', broad - cast - ing pep — Dear,

it's time to kiss? — No fool - in' I'm
 just watch your step — No fool - in'

won-der burn-ing who you real-ly think you'll mar-ry? Don't
when you're with an-oth-er fel-low, I'm

blun-der learn-ing with some Tom or Dick or Har-ry; No fool-in'
to ap-pre-ci-ate O-thel-lo; No fool-in'

Take me in-stead,— But af-ter were wed— No
Tho' love is blind,— I have-n't that kind— No

Fool-in'! Fool-in'!
Fool-in'! Fool-in'!

won - der burn - ing who you real - ly think you'll mar - ry? Don't
when you're with an - oth - er fel - low, I'm

blun - der learn - ing with some Tom or Dick or Har - ry; No fool - in'
to ap - pre - ci - ate O - thel - lo; No fool - in'

Take me in - stead, — But af - ter were wed — No
Tho' love is blind, — I have - n't that kind — No

Fool - in'!" Fool - in'!"

A CHARMING LITTLE SOUTHERN SONG

"OH MISS HANNAH"

Lyric by
THEKLA HOLLINGSWORTH

Music by
JESSIE L. DEPPEN

Piano



mf

The piano introduction consists of two staves. The right hand (treble clef) features a melody of eighth and sixteenth notes, while the left hand (bass clef) provides a harmonic accompaniment with chords and moving lines. The music is marked with a mezzo-forte (mf) dynamic.

p

Oh, Miss Han-nah, - Ain't you com-in' out to -



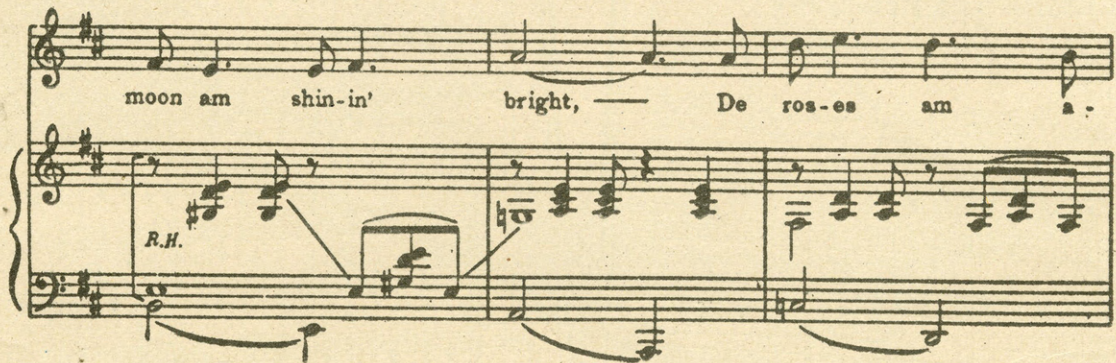
The first line of the song features a vocal line on a single staff and piano accompaniment on two staves. The vocal line begins with a piano (*p*) dynamic. The lyrics are: "Oh, Miss Han-nah, - Ain't you com-in' out to -".

- night? — De mock-in' bird am - sing-in' - An' de



The second line of the song continues the vocal line and piano accompaniment. The lyrics are: "- night? — De mock-in' bird am - sing-in' - An' de".

moon am shin-in' bright, — De ros-es am a -



The third line of the song concludes the vocal line and piano accompaniment. The lyrics are: "moon am shin-in' bright, — De ros-es am a -". The piano part includes a right-hand (R.H.) section with a specific melodic figure.

MOST SUCCESSFUL SONG NUMBERS FROM THE SEASON'S MUSICAL COMEDIES

From "COUNTESS MARITZA"

Play Gypsies - Dance Gypsies

Words by HARRY B. SMITH
Ukulele arr. by May Singhi Breen

Tune Ukulele
A D F# B

Music by EMMERICH KÁLMAN

Andante
Refrain *a tempo*
Play, gyp-sies! Dance, gyp-sies! Play while you may!
p a tempo
We're gyp-sies One and all, I say. And through our
youth's May-time, Love's play-time Hearts ev-er

Copyright MCMXXIV by W. Kernog
Copyright MCMXXVI by HARMS Inc., N.Y.
International Copyright Secured
ALL RIGHTS RESERVED Including public performance for profit

From "QUEEN HIGH"

Cross Your Heart

Ukulele arr. by May Singhi Breen
Words by B.G. DE SYLVA

Tune Ukulele
A D F# B
Put Ukulele Capo on 3rd fret

Music by LEWIS E. GENSLER

Refrain *Allegretto*
p-mp
Cross your heart and hope to die That you'll be true, And so will I, For
ev-er and for ev-er and a day!
Cross your heart and hope to die That I'm the ap-ple of your eye And

Copyright MCMXXVI by HARMS Inc., N.Y.
International Copyright Secured
ALL RIGHTS RESERVED Including public performance for profit

From "TIP TOES"

That Certain Feeling

Words by IRA GERSHWIN
Ukulele arr. by May Singhi Breen
Moderato semplice

Steve and Tip Toes
Tune Ukulele
A D F# B
Put Uke Capo on 1st Fret.

Music by GEORGE GERSHWIN

Refrain *p-f a tempo*
That cer-tain feel-ing, The first time I met you I hit the
That cer-tain feel-ing, The first time I met you That cer-tain
I could not for-get you. You were com-plete-ly sweet, Oh,
I could not for-get you. I felt it hap-pen just As
what could I, do? I want-ed phras-es To
you came in-view. Grew sort of dis-zy Thought,

Copyright MCMXXV by HARMS Inc., N.Y.
International Copyright Secured
ALL RIGHTS RESERVED Including public performance for profit

From "DEAREST ENEMY"

Here In My Arms

Words by LORENZ HART
Ukulele arr. by May Singhi Breen

Tune Ukulele
G C E A

Music by RICHARD RODGERS

Refrain *p-f a tempo*
Here in my arms it's a - dor - a - ble - It's de -
-plor-a-ble - That you were nev-er there. When lit-tle
lips are so kiss-a-ble It's per-mis-si-ble

Copyright MCMXXV by HARMS Inc., N.Y.
International Copyright Secured
ALL RIGHTS RESERVED Including public performance for profit