

MARY LOU

By
**ABE
LYMAN
GEORGE
WAGNER**
and
**J. RUSSEL
ROBINSON**



WITH
**UKULELE
ARRANGEMENT**



Barbelle



HENRY WATERSON INC.
1571 BROADWAY, NEW YORK, N.Y.
WATERSON, BERLIN & SNYDER CO.,
SELLING AGENTS

41-



MARY LOU

WITH
UKULELE
ARRANGEMENT

By
**ABE
LYMAN
GEORGE
WAGGNER**
and
**J. RUSSEL
ROBINSON**



Barbelle



HENRY WATERSON INC.
1571 BROADWAY, NEW YORK, N.Y.
WATERSON, BERLIN & SNYDER CO.,
SELLING AGENTS

MADE
IN
U.S.A.

MARY LOU

C.

By
**ABE
LYMAN
GEORGE
WAGGNER**

and
**J. RUSSEL
ROBINSON**



WITH
**UKULELE
ARRANGEMENT**



Barbelle



FEATURED BY
BILLY NASH

HENRY WATERSON INC.
1571 BROADWAY, NEW YORK, N.Y.
WATERSON, BERLIN & SNYDER CO.,
SELLING AGENTS



MARY LOU

8/19/79

WITH
UKULELE
ARRANGEMENT



By
**ABE
LYMAN
GEORGE
WAGGNER**
and
**J. RUSSEL
ROBINSON**



Barbelle



FEATURED BY
WALTER DANZINGER

FEATURED ORGANIST
UPTOWN THEATRE
LOS ANGELES

The Theatre

HENRY WATERSON INC.
1571 BROADWAY, NEW YORK, N.Y.
WATERSON, BERLIN & SNYDER CO.,
SELLING AGENTS

made
USA

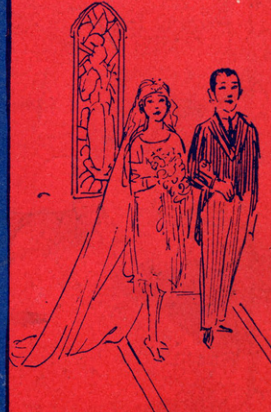
MARY LOU

3/31/78

By
**ABE
LYMAN
GEORGE
WAGGNER**
and
**J. RUSSEL
ROBINSON**



WITH
**UKULELE
ARRANGEMENT**



Barbelle



Featured by
SCRAPPY LAMBERT
with **BEN BERNIE**
AND HIS
ORCHESTRA

HENRY WATERSON INC.
1571 BROADWAY, NEW YORK N.Y.
WATERSON, BERLIN & SNYDER CO.
SELLING AGENTS

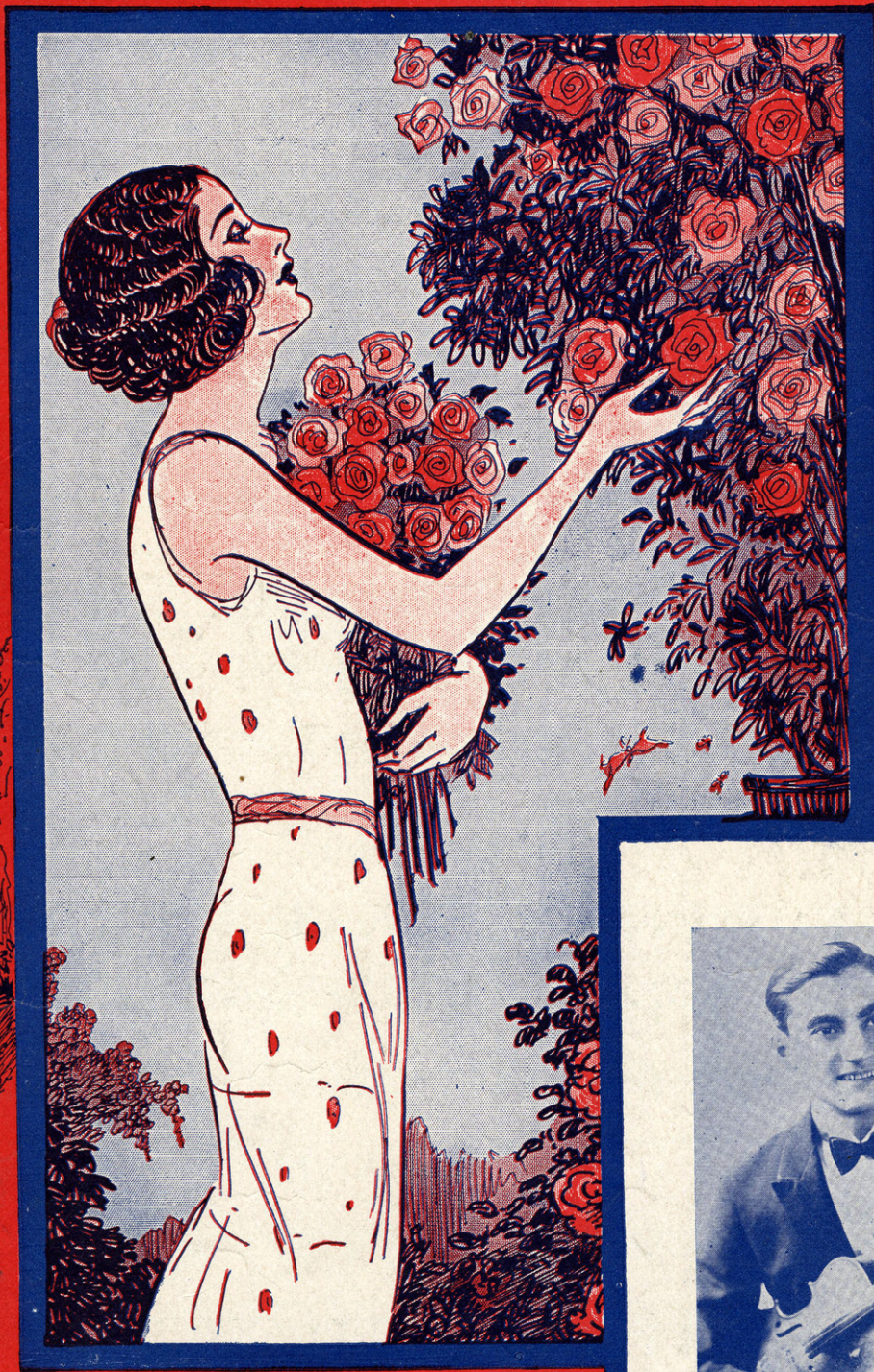
MADE
USA

MARY LOU

30

By
**ABE
LYMAN
GEORGE
WAGGNER**
and
**J. RUSSEL
ROBINSON**

WITH
**UKULELE
ARRANGEMENT**



Barbelle

*Eleanor
Lester*



FEATURED
BY **TOMMY EVANS**
WITH B.F. KEITH CIRCUIT

HENRY WATERSON INC.
1571 BROADWAY, NEW YORK, N.Y.
WATERSON, BERLIN & SNYDER CO.,
SELLING AGENTS



BE SURE TO GET COPIES OF THESE BIG SONG HITS

Lonesome And Sorry

BENNY DAVIS
& CON CONRAD

Lone - some and sor - ry Be - cause you went a - way.

p-f

The musical score for 'Lonesome And Sorry' is written in G major and 2/4 time. It features a vocal line with lyrics and a piano accompaniment. The piano part begins with a *p-f* dynamic marking. The melody is simple and sentimental, with a bridge section.

Animal Crackers

By FRED RICH,
SAM COSLOW,
& HARRY LINK

I'm just wild a - bout an - i - mal crackers, an - i - mal crackers, I can't live with - out an - i - mal crackers,

p-f

The musical score for 'Animal Crackers' is in G major and 2/4 time. The vocal line has a playful, bouncy melody. The piano accompaniment is rhythmic and features a *p-f* dynamic marking. The lyrics are repeated twice.

Petrushka

By BILLY ROSE
& FRED FISHER

"Oh! Pe - trush - ka Oh! Pe - trush - ka Hear the boat - men call - ing me!

p-f

The musical score for 'Petrushka' is in G major and 2/4 time. The vocal line is dramatic and features a *p-f* dynamic marking. The piano accompaniment is lush and features a *p-f* dynamic marking. The lyrics are repeated twice.

I'm Satisfied

Words by
ALFRED BRYAN

Music by
JACK LITTLE

I'm sat - is - fied to know I've tried I've done the best I can do.

The musical score for 'I'm Satisfied' is in G major and 2/4 time. The vocal line is simple and features a *p-f* dynamic marking. The piano accompaniment is rhythmic and features a *p-f* dynamic marking.

Tell Me To-Night

By PIERRE CONNOR
& JACK LITTLE

Tell me to - night — tell me to - night — Do you real - ly love

p-f

The musical score for 'Tell Me To-Night' is in G major and 2/4 time. The vocal line is simple and features a *p-f* dynamic marking. The piano accompaniment is rhythmic and features a *p-f* dynamic marking.

The Above Numbers are Published and Copyrighted by Henry Waterson, Inc. 1571 Broadway, N. Y.
These Songs for sale at all Music Dealers or sent direct for 35¢ or any three for one dollar.
Also obtainable on all Phonograph Records and Music Rolls.

BE SURE TO GET COPIES OF THESE BIG SONG HITS

Words by
BILLY ROSE

To-Night You Belong To Me

Music by
LEE DAVID

Though you be-long to some-bod-y else, To - night you be-long to me. Though we're a-

p-f

Iyone My Own Iyone

By ALFRED BRYAN
ADDY BRITT &
HAROLD LEONARD

I-yone my own I-yone I'm lone-some for the lovelight of Ha - wa-ii.

Words by
BILLY ROSE

That Night In Araby

Music by
TED SNYDER

I'm dream - ing of that night of love with you in Ar - a - by, I

p-f

Words by
ALFRED BRYAN

Whisper-Sh!

Music by
LITTLE JACK LITTLE

Whis-per - sh! — be care-ful, dear, — Whis-per - sh! — some-one is near.

p-f

Yiddisha Charleston

By BILLY ROSE
& FRED FISHER

Oi that oi that Yid-dish-a Charleston, Oi that oi that Yid-dish-a Charleston, You should see the
Oi that oi that Yid-dish-a Charleston, Oi that oi that Yid-dish-a Charleston, Watch those He - bie

p-f

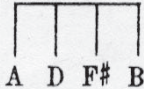
The Above Numbers are Published and Copyrighted by Henry Waterson, Inc. 1571 Broadway, N.Y.
These Songs for sale at all Music Dealers or sent direct for 35¢ or any three for one dollar.
Also obtainable on all Phonograph Records and Music Rolls.

SM 7058

MARY LOU

Uke arr. by Harry Tiedeman

Tune-a-Uke



By ABE LYMAN,
GEORGE WAGGNER &
J. RUSSEL ROBINSON

Moderato

Piano

f

Till ready

p

Voice

I have some-thing on my mind that I've just got to say, Mar-y
There's a co-zy bung-a-low that's fixed for you and me, Mar-y

p

Lou, _____ Mar-y Lou. _____ Just the same old
Lou, _____ Mar-y Lou. _____ May-be in a

sto-ry in the same old fash-ioned way, Mar-y Lou, ——— List-en, do! ———
 year or so we'll make it do for three, Mar-y Lou, ——— List-en, do! ———

Chorus

Mar-y Lou, ——— Mar-y Lou, ——— Cross my heart ———

p-f

— I love you! ——— Ev-'ry bell in the steep-le is

read-y to ring, ——— And all the peo-ple are plan-ning pret-ty

pres-ents all for you, Mar-y Lou, Won't you

give your prom - ise true? Why for miles a - round they're

wait - ing, to start their cel - e - brat - ing, when you say "I do," Mar - y

Lou! Mar - y Lou!

D.S.

BE SURE TO GET COPIES OF THESE BIG SONG HITS

Words by
BILLY ROSE

To-Night You Belong To Me

Music by
LEE DAVID

Though you be-long to some-bod-y else, To - night you be-long to me. Though we're a-

p-f

I-yone My Own I-yone

By ALFRED BRYAN
ADDY BRITT &
HAROLD LEONARD

I-yone my own I-yone I'm lone-some for the love light of Ha - wa - ii.

Words by
BILLY ROSE

That Night In Araby

Music by
TED SNYDER

I'm dream - ing of that night of love with you in Ar - a - by, I

p-f

Words by
ALFRED BRYAN

Whisper-Sh!

Music by
LITTLE JACK LITTLE

Whis-per - sh! — be care-ful, dear, — Whis-per - sh! — some-one is near.

p-f

Yiddisha Charleston

By BILLY ROSE
& FRED FISHER

Oi that oi that Yid-dish-a Charleston, Oi that oi that Yid-dish-a Charleston, You should see the
Oi that oi that Yid-dish-a Charleston, Oi that oi that Yid-dish-a Charleston, Watch those He - bie

p-f

The Above Numbers are Published and Copyrighted by Henry Waterson, Inc. 1571 Broadway, N.Y.
These Songs for sale at all Music Dealers or sent direct for 35¢ or any three for one dollar.
Also obtainable on all Phonograph Records and Music Rolls.

BE SURE TO GET COPIES OF THESE BIG SONG HITS

Lonesome And Sorry

BENNY DAVIS
& CON CONRAD

Lone - some and sor - ry Be - cause you went a - way.

p-f

Hot Henry!

Words by
BALLARD MACDONALD

Music by
HARRY CARROLL

And there goes Hot Hen-ry! Guar-an-tee-ing sat-is-fac-tion, Hot Hen-ry!
And there goes Hot Hen-ry! Guar-an-tee-ing sat-is-fac-tion, Hot Hen-ry!

Her Beaus Are Only Rainbows

Words by
ALFRED BRYAN

Music by
GEO. W. MEYER

Her beaus are on-ly rain - bows And like the rain - bows they dis-ap - pear.

Hold Me
Close To Your Heart

FRANK A. WRIGHT

Hold me close to your heart I know that it means We nev-er shall part

I'm Flirting With You

Words by
CLIFF FRIEND

Music by
HAROLD LEONARD

(yoo-hoolyoo - hool)
I'm flirt-ing with you, Sweet one I'm flirt-ing with you Yes,
(yoo-hoolyoo - hool)

The Above Numbers are Published and Copyrighted by Henry Waterson, Inc. 1571 Broadway, N.Y.
These Songs for sale at all Music Dealers or sent direct for 35c or any three for one dollar.
Also obtainable on all Phonograph Records and Music Rolls.