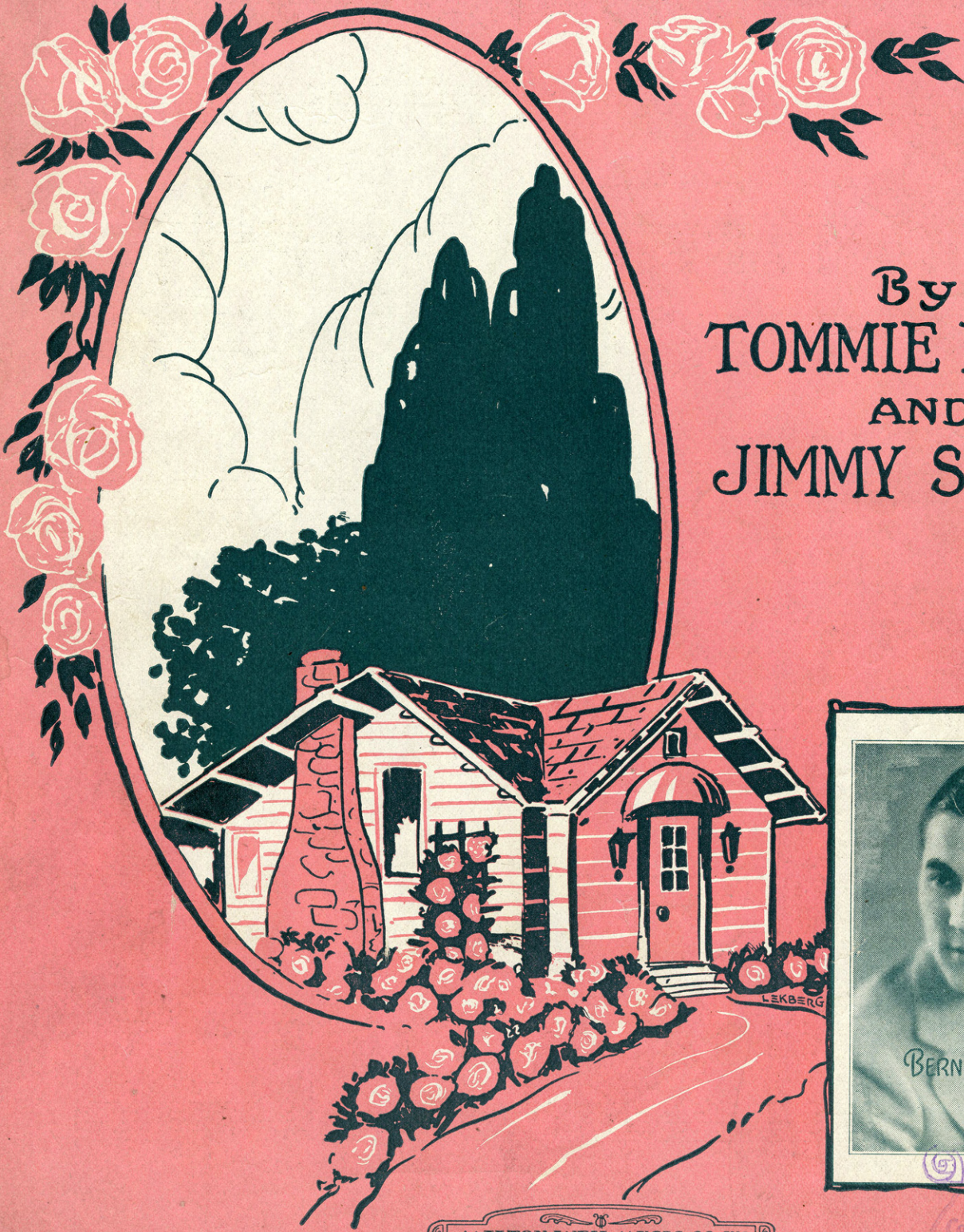


*Nellie Wages*

*Betty H.*

# Looking at the World THRU ROSE COLORED GLASSES



By  
**TOMMIE MALIE**  
AND  
**JIMMY STEIGER**



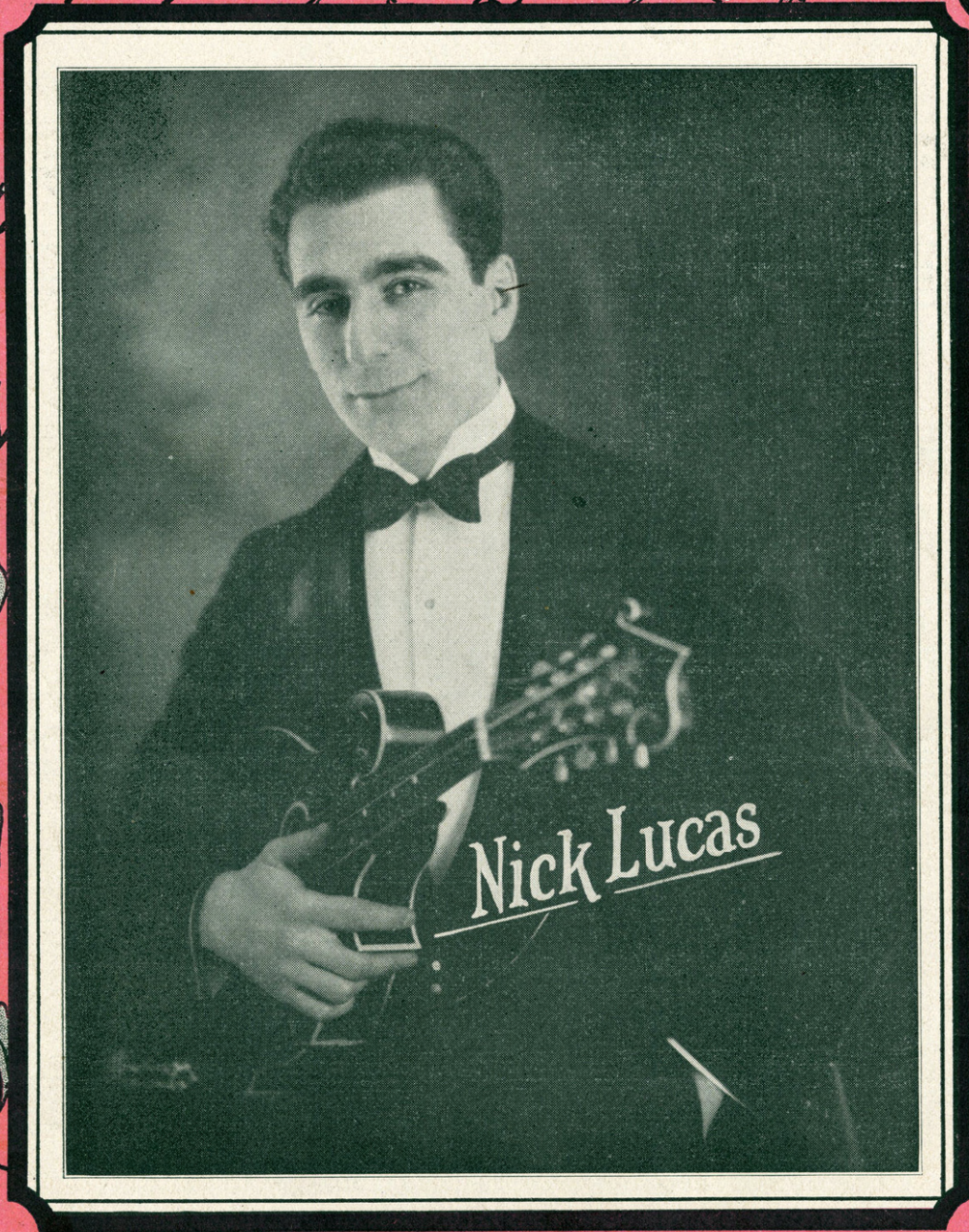
**MILTON WEIL MUSIC CO. INC.**  
81 W. Randolph St., CHICAGO

MILTON WEIL MUSIC CO.  
Corner 8th & Hill Sts.  
Next to Metropolitan Theatre  
CHICAGO, ILL.  
MADE IN U.S.A.

A WORTH WEIL SONG

6/25/74

# Looking at the World THRU ROSE COLORED GLASSES



Nick Lucas

MILTON WEIL MUSIC CO. INC.  
54 W. Randolph St., CHICAGO  
MADE IN U.S.A.

by TOMMIE MALIE  
and JIMMY STEIGER

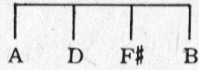
SM 7046

# Looking At The World Thru Rose Colored Glasses

By { TOMMY MALIE and  
JIMMY STEIGER

A Rube Bennett Arrangement

Piano Tune Uke in D



Moderato

I've said good - bye — to "Mis - ter Sor - - - row,"  
Oth - ers may cry — but I'll be smil - - - ing,

How do you do — "Mis - ter Joy,"  
No cause to wor - ry or fret,

No need to wor - ry 'bout to - mor - - row,  
While for them trou - bles may be pil - - ing,

Look at me, — And you'll see, — A  
Here is one — Who'll have fun, — Cause

soul as hap - py as can be; — Be - cause I'm  
af - ter all is said and done; — You see I'm

CHORUS

Look - ing at the world thru rose col - ored glass - - es

Ev - 'ry-thing is ros - y now, \_\_\_\_\_ Looking at the

world and ev - 'ry-thing that pass - es, Seems of ros - y hue some

how, \_\_\_\_\_ Why do I, feel so spry, Don't wink your eye

Need-n't guess, I'll con-fess, Certain some-one just said yes,

In a bung - a - low all cov-ered with ros - es,

I will set - tle down I vow \_\_\_\_\_ That's why I'm

look-ing at the world thru rose colored glass - es And ev - 'ry-thing is

ros - y now. \_\_\_\_\_ now. \_\_\_\_\_

# WORTH-WEIL SONGS

## LOOKING AT THE WORLD THRU ROSE COLORED GLASSES

Look-ing at the world thru rose col-ored glass - - - es Ev - 'ry-thing is ros - y

Copyright MCMXXVI by Milton Weil Music Co., Chicago, Ill.

## TIE ME TO YOUR APRON STRINGS AGAIN

Tie me to your a-pron strings a - gain I know there's room for me up -

Copyright MCMXXVI by Milton Weil Music Co., Chicago, Ill.

## WHAT DO WE CARE IF IT'S ONE O'CLOCK (OR TWO, OR THREE, OR FOUR)

What do we care if it's one o' clock if it's two, or three, or four,

Copyright MCMXXV by Milton Weil Music Co., Chicago, Ill.

## STARS (ARE THE WINDOWS OF HEAVEN)

Stars are the win - dows of heav - en where an - gels peep thru,

Copyright MCMXXVI by Milton Weil Music Co., Chicago, Ill.

## TALKING TO THE MOON

Talk-ing to the moon while I croon That I love you, Ros-es are in bloom

Copyright MCMXXVI by Milton Weil Music Co., Chicago, Ill.

## NOTHING ELSE TO DO (BUT SIT AROUND AND THINK ABOUT YOU)

Nothing else to do but sit a - round and think a - bout you, - Just think a - bout you,

Copyright MCMXXVI by Milton Weil Music Co., Chicago, Ill.

## SORRY AND BLUE

Sor - ry and blue wond - ring why you Told me that we had to part

Copyright MCMXXVI by Milton Weil Music Co., Chicago, Ill.

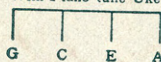
## LET ME SPEND THE JOURNEY'S END WITH YOU

Let me spend the jour - ney's end with you, 'Till they send from up a - bove

Copyright MCMXXV by Milton Weil Music Co., Chicago, Ill.

# If I Ever Cry You'll Never Know

With Piano tune Uke



SYLVIA CLARK  
BOBBIE KUHN  
& EDDIE KUHN

CHORUS

May - be I'll cry, When you say good -

The musical notation includes a vocal line with lyrics, a piano accompaniment line, and a bass line. The key signature has one flat (Bb) and the time signature is 4/4. The piano part starts with a *pp* dynamic marking.

# Nothing Else To Do But Sit Around And Think About You

Words & Music by  
ROY BERGERE  
JOE GOODWIN  
and  
LARRY SHAY

CHORUS

Nothing else to do but sit a - round and think a - bout you,

The musical notation includes a vocal line with lyrics, a piano accompaniment line, and a bass line. The key signature has one flat (Bb) and the time signature is 4/4.

# Sorry And Blue

With Piano Tune Ukelele



By BOB and DON ELBEL

CHORUS

Sor - ry and blue wond - ring why you Told me that

The musical notation includes a vocal line with lyrics, a piano accompaniment line, and a bass line. The key signature has two flats (Bb, Eb) and the time signature is 4/4. The piano part starts with a *pp-f* dynamic marking.

COPIES ON SALE WHEREVER MUSIC IS SOLD  
The MILTON WEIL MUSIC CO. Chicago, Ill.  
This Number can also be had for your Phonograph or Player Piano