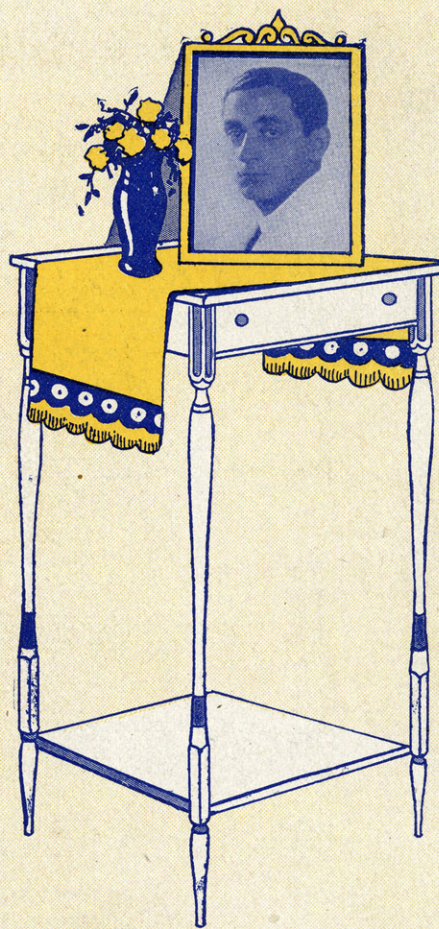


IRVING BERLIN'S JUST A LITTLE LONGER



Irving Berlin, Inc.
MUSIC PUBLISHERS
1607 Broadway New York

ORDER CODE
"LONGER"

MADE IN
USA

IEFF



THE MASTER'S "HOME" AND "MOTHER" SONG

IRVING BERLIN'S

I'M ON MY WAY HOME

CHORUS

Why is the sun — shin - ing bright - - -

er? I'm on my way home — I'm on my way home —

Why is my heart — feel - ing light - - -

Copyright MCMXXVI by IRVING BERLIN, Inc. 1607 Broadway, N.Y.C.
International Copyright Secured Made in U.S.A. All Rights Reserved

COPIES ON SALE WHEREVER MUSIC IS SOLD
This Number can also be had for your Phonograph and Player Piano

SM 7021

Just A Little Longer

Tune Ukulele
A D F# B

By IRVING BERLIN

Moderato

The piano introduction consists of two staves. The right hand features a melodic line with eighth and sixteenth notes, while the left hand provides a harmonic accompaniment with chords and single notes.

This section continues the piano accompaniment. It includes a 'Vamp' section marked with a double bar line and repeat dots, where the music loops back to a previous point. The dynamics are marked with 'p' (piano).

The vocal line is written on a single staff with guitar chord diagrams above the notes. The lyrics are: "Hold me fast for the time has passed And we have to say good-bye, Soon I know, I must let you go, From my arms where you be - long,"

Hold me fast for the time has passed And we have to say good-bye,
Soon I know, I must let you go, From my arms where you be - long,

The piano accompaniment for the first vocal line, featuring chords in the right hand and a bass line in the left hand. Dynamics are marked with 'p'.

The vocal line continues with guitar chord diagrams above the notes. The lyrics are: "In my arms let me hold your charms, while the pre-cious mo-ments fly. Leav-ing me with a mem-o - ry of an in - ter - rup - ted song."

In my arms let me hold your charms, while the pre-cious mo-ments fly.
Leav-ing me with a mem-o - ry of an in - ter - rup - ted song.

The piano accompaniment for the second vocal line, continuing the harmonic support with chords and bass line.

Ukulele Arr. by MAY SINGHI BREEN

Copyright MCMXXVI by IRVING BERLIN, Inc., 1607 B'way, N.Y.

International Copyright Secured

MADE IN U.S.A.

All Rights Reserved

How I hate to go, for I love you so,
It will lin - ger on af - ter you have gone

Let me gaze in your eyes and then, Lone-ly days till we meet a-gain, So
Hold me fast while we kiss and then, It's the last till we meet a-gain, So

CHORUS
Just a lit - tle long - er let me hold you close to my

heart and that lit - tle long - er I'll re -

For the professional *
Just A Little Longer - 3

-mem - ber while we're a - part _____ Just _____ an - oth - er

mo - ment of bliss _____ and Just _____ an - oth - er won - der - ful kiss,

_____ my love _____ keeps grow - ing strong - er _____ ling - er - ing

long - er _____ with . you . _____ you . _____

* See page 4

STANDARDS OF THE WORLD

"STERLING" ON SILVER
"IRVING BERLIN" ON SONGS

BETTER THAN "ALWAYS" AND "REMEMBER"

IRVING BERLIN'S

BECAUSE I LOVE YOU

CHORUS

Be - cause I love you I've

tried so hard but can't for -

get Be - cause I love you

Copyright 1926 by IRVING BERLIN, Inc., 1607 B way, N. Y.
All Rights Reserved MADE in U. S. A. International Copyright Secured

COPIES ON SALE WHEREVER MUSIC IS SOLD
This Number can also be had for your Phonograph and Player Piano