

WITH UKULELE ARRANGEMENT

Idolizing

LYRICS & MELODY
by
Sam Messenheimer
Irving Abrahamson
&
Ray West



Featured by
PAUL ASH

Sherman,  & Co.
SAN FRANCISCO



91-

WITH UKULELE ARRANGEMENT

Idolizing

LYRICS & MELODY
by
Sam Messenheimer
Irving Abrahamson
&
Ray West



Featured by
ART GILLHAM
The Whispering Pianist

Sherman,  & Co.
SAN FRANCISCO



WITH UKULELE ARRANGEMENT

Idolizing

LYRICS & MELODY
by
Sam Messenheimer
Irving Abrahamson
&
Ray West



W. R.
CAMERON

Sherman,  & Co.

SAN FRANCISCO

Featured by
DAVE BERNIE
Club Richmond





School Day Sweethearts

Words and Music by
GLEN EDWARDS

CHORUS *a tempo*

Can't we be the same school-day sweet - hearts? Let us wan-der back once
more. — Thru the lit - tle lane where we part - ed,

The musical score for 'School Day Sweethearts' consists of a vocal line and a piano accompaniment. The key signature has two flats (B-flat and E-flat), and the time signature is 2/4. The tempo is marked 'a tempo'. The piano part begins with a dynamic marking of 'mf-f'. The lyrics are: 'Can't we be the same school-day sweet - hearts? Let us wan-der back once more. — Thru the lit - tle lane where we part - ed,'

Copyright MCMXXIII by Sherman, Clay & Co., San Francisco
International Copyright Secured and Reserved

GIVE ME TODAY (AND YOU CAN HAVE TOMORROW)

Lyric by
HARRY D. KERR

Music by
PAUL TITSWORTH
and HAROLD BELL

Chorus *(slowly)*

Give me to - day — And you can have to - mor - row —
Give me to - day — with you a - lone that's

The musical score for 'Give Me Today' features a vocal line and piano accompaniment. The key signature has two flats (B-flat and E-flat), and the time signature is 2/4. The tempo is marked '(slowly)'. The piano part includes several chord diagrams: Eb, Bb7, and 3dim. The lyrics are: 'Give me to - day — And you can have to - mor - row — Give me to - day — with you a - lone that's'

Copyright MCMXXVI by Sherman, Clay & Co., San Francisco
International Copyright Secured and Reserved
Keith Prowse & Co. Ltd., London, W.1. — Allan's Proprietary, Ltd., Melbourne, Australia

Copies for sale wherever music is sold.
These numbers can also be had for your phonograph and player piano.

Sherman,  & Co.
SAN FRANCISCO



School Day Sweethearts

Words and Music by
GLEN EDWARDS

CHORUS *a tempo*

Can't we be the same school-day sweet - hearts? Let us wan-der back once
more. — Thru the lit - tle lane where we part - ed,

The musical score for 'School Day Sweethearts' consists of a vocal line and a piano accompaniment. The key signature has two flats (B-flat and E-flat), and the time signature is 3/4. The tempo is marked 'a tempo'. The piano part begins with a dynamic marking of 'mf-f'. The lyrics are: 'Can't we be the same school-day sweet - hearts? Let us wan-der back once more. — Thru the lit - tle lane where we part - ed,'

Copyright MCMXXIII by Sherman, Clay & Co., San Francisco
International Copyright Secured and Reserved

Lyric by
FRANK X. GALVIN

HUSH - A - BYE

Music by
ROBERT E. SPENCER

Chorus (*slowly*)

Hush - a - bye, Hush - a - bye ba - by Come nest - le
close to my breast — Hush - a - bye, Hush - a - bye

The musical score for 'Hush - A - Bye' features a vocal line and piano accompaniment. The key signature has two flats (B-flat and E-flat), and the time signature is 3/4. The tempo is marked 'slowly'. The piano part begins with a dynamic marking of 'p a tempo slowly'. The lyrics are: 'Hush - a - bye, Hush - a - bye ba - by Come nest - le close to my breast — Hush - a - bye, Hush - a - bye'. The score includes guitar chord diagrams for Bb, Eb, F7, and Ebm.

Copyright MCMXXVI by Sherman, Clay & Co., San Francisco
International Copyright Secured and Reserved
Keith Prowse & Co. Ltd., London, W.I. — Allan's Proprietary, Ltd., Melbourne, Australia

Copies for sale wherever music is sold.
These numbers can also be had for your phonograph and player piano.

Sherman,  & Co.
SAN FRANCISCO

SM6982

IDOLIZING

Tune Uke thus: $\overset{G}{\square} \overset{C}{\square} \overset{E}{\square} \overset{A}{\square}$
Tenor Banjo, Mandola, Guitar etc.
Play Chords marked on diagrams.

Words and Music by
SAM MESSENHEIMER
IRVING ABRAHAMSON &
RAY WEST

Moderato

Sweet-heart, I
You've brought the

know that I a - dore you; Love you more and more each
sun-shine and the flow - ers To a life that once seemed

day. And when it's plain I live just for
drear You've brought so ma - ny prec-ious hou -

A7 G7 Alt. C7

you, Do you won - der that I say.
rs, It's not strange I love you, dear.

rall.

Chorus F C7 dim. F D7 Aug. D7 G7

I - do - liz - ing you is all that seems

p mf

Alt. G7 C7 dim. dim. C7

worth while And by your side I'll lin-ger

Gm7 C7 C Aug. F A7

too be - cause of your dear smile.

I love the eyes _____ that mean my hap - pi - ness, I

D7 Aug. D7

prize _____ the lips I fond - ly press, Why I -

Gm Am C7 F

do - liz - ing you is all that seems worth

C7 dim. F D7 Aug. D7 G7 C7

while. while. _____

1 F Gm7 C7 2 F

ADIÓS by the Writer of "LINGER AWHILE"

Chorus

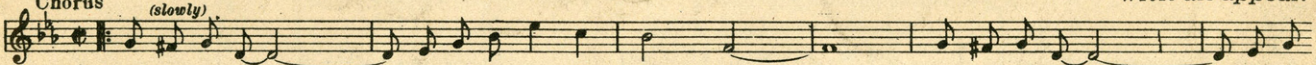


A - di - os, A - di - os, Come and kiss me,

Copyright MCMXXVI by Sherman, Clay & Co., San Francisco

GIVE ME TODAY (And you can have Tomorrow) Ballad Fox Trot Hit with an appeal.

Chorus (slowly)

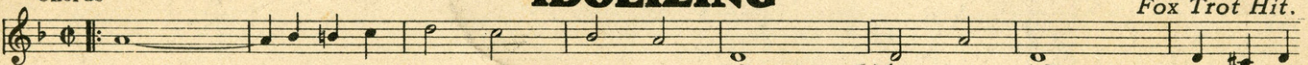


Give me to - day And you can have to - mor - row Give me to - day with you

Copyright MCMXXVI by Sherman, Clay & Co., San Francisco

IDOLIZING Melodious Fox Trot Hit.

Chorus

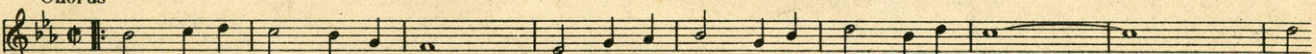


I do - liz - ing you is all that seems worth while And by

Copyright MCMXXVI by West Coast Music Publishers, Los Angeles, Calif.
Copyright transferred MCMXXVI to Sherman, Clay & Co., San Francisco

WHY DO I ALWAYS REMEMBER Fox Trot Hit

Chorus

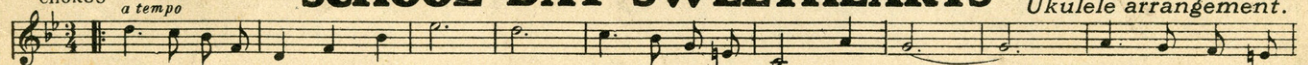


Why do I al - ways re - mem - ber, When I'm try - ing so hard to for - get. I

Copyright MCMXXVI by Sherman, Clay & Co., San Francisco

SCHOOL DAY SWEETHEARTS Waltz Hit with Ukulele arrangement.

CHORUS a tempo

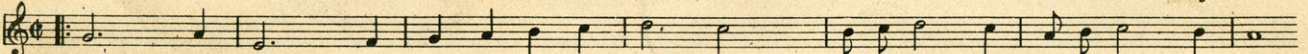


Can't we be the same school-day sweet - hearts? Let us wan - der back once more, Thru the lit - tle

Copyright MCMXXIII, by Sherman, Clay & Co., San Francisco

GYPSYLAND A favorite everywhere.

CHORUS



Gyp - sy - land, that's where I want to wan - der, Gyp - sy - land, that gold - en strand out - yon

Copyright MCMXXV by Merit Music Makers
Copyright transferred MCMXXV to Sherman, Clay & Co., San Francisco

JUST ONE MORE KISS Fox Trot Hit with Ukulele arrangement.

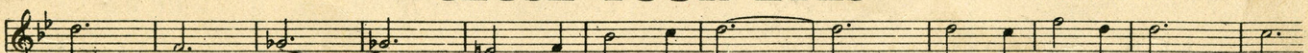
Chorus



Star - light a - bove seems to call for Just one more kiss,

Copyright MCMXXVI by Sherman, Clay & Co., San Francisco

CLOSE YOUR EYES Waltz Hit of a Decade.

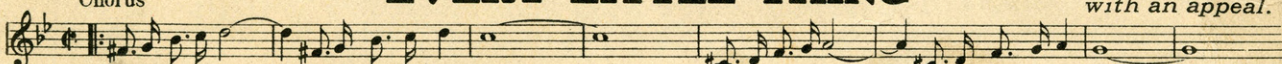


Close your eyes Close your eyes. in sleep Leave your cares be - hind you

Copyright MCMXXV by Sherman, Clay & Co., San Francisco

EVERY LITTLE THING Fox Trot Ballad with an appeal.

Chorus

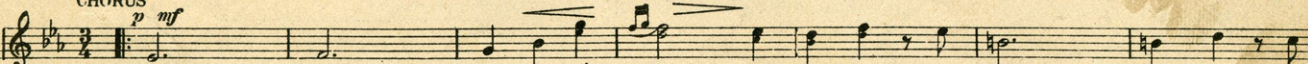


Ev - ry lit - tle thing in the world is worth while Ev - ry lit - tle thing will be bright if you smile

Copyright MCMXXVI by Sherman, Clay & Co., San Francisco

ALWAYS YOU'RE NEAR Beautiful Waltz Ballad.

CHORUS p mf



Al - ways, Al - ways you're near, For in all my dreams, won - der - ful

Copyright MCMXXIV by Ella Mae Goodrum
Copyright transferred MCMXXV to Sherman, Clay & Co., San Francisco

Copies for sale
wherever music is sold.

PUBLISHED BY
Sherman, Clay & Co.

These numbers can also
be had for your phonograph
and player piano.

SAN FRANCISCO

SCHOLZ, ERICKSON & COMPANY, SAN FRANCISCO