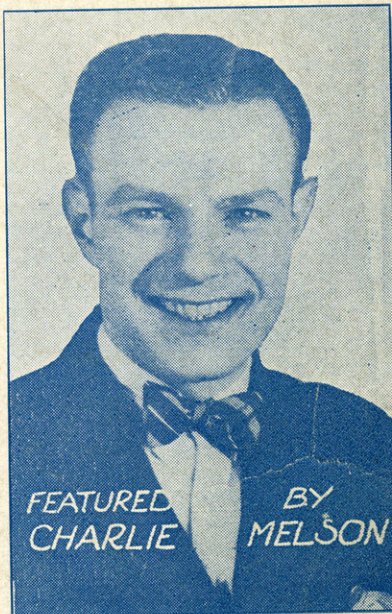


HELLO SWANEE HELLO

WITH
UKULELE
Arrangement



FEATURED BY
CHARLIE MELSON



by
SAM COSLOW
and
ADDY BRITT

HENRY WATERSON INC.
1571 BROADWAY, NEW YORK, N.Y.
WATERSON, BERLIN & SNYDER CO.
SELLING AGENTS

Barthell

MADE
U.S.A.

BE SURE TO GET COPIES OF THESE BIG SONG HITS

Words by
BILLY ROSE

To-Night You Belong To Me

Music by
LEE DAVID

Though you be-long to some-bod-y else, To - night you be-long to me. Though were a -

p-f

Iyone My Own Iyone

By ALFRED BRYAN
ADDY BRITT &
HAROLD LEONARD

I-yone my own I-yone I'm lone-some for the love light of Ha - wa-ii.

Words by
BILLY ROSE

That Night In Araby

Music by
TED SNYDER

I'm dream - ing of that night of love with you in Ar - a - by, I

p-f

Words by
ALFRED BRYAN

Whisper-Sh!

Music by
LITTLE JACK LITTLE

Whis-per - sh! — be care-ful, dear, — Whis-per - sh! — some-one is near.

p-f

Yiddisha Charleston

By BILLY ROSE
& FRED FISHER

Oi that oi that Yid-dish-a Charleston, Oi that oi that Yid-dish-a Charleston, You should see the
Oi that oi that Yid-dish-a Charleston. Oi that oi that Yid-dish-a Charleston, Watch those He - bie

p-f

The Above Numbers are Published and Copyrighted by Henry Waterson, Inc. 1571 Broadway, N.Y.
These Songs for sale at all Music Dealers or sent direct for 35¢ or any three for one dollar.
Also obtainable on all Phonograph Records and Music Rolls.

SM6935

Hello! Swanee - Hello!

Tune - a - Uke

G C E A

By SAM COSLOW
and ADDY BRITT

arr. by Harry Tiedeman

Moderato

Piano

The piano introduction consists of two staves. The right hand plays a series of chords and melodic fragments, while the left hand provides a steady bass line. Dynamics range from *p* (piano) to *mf* (mezzo-forte) to *sfz* (sforzando). The tempo is marked *Moderato*.

Till ready

From my ob - ser -
Roam - in' 'round from

The vocal line begins with a rest, indicated by a double bar line and the instruction *Till ready*. The piano accompaniment continues with a steady rhythm. The lyrics are: "From my ob - ser - Roam - in' 'round from".

va - tion car - I see towns - dis - ap - pear - ing,
town to town - Seek - ing for - tune and glo - ry,

The vocal line continues with the lyrics: "va - tion car - I see towns - dis - ap - pear - ing, town to town - Seek - ing for - tune and glo - ry,". The piano accompaniment provides harmonic support.

I don't know just where we are - But it's Heav - en we're
Just like oth - er folks I've found - It was just - the old

The vocal line concludes with the lyrics: "I don't know just where we are - But it's Heav - en we're Just like oth - er folks I've found - It was just - the old". The piano accompaniment continues to the end of the piece.

near-ing. ————— En-gin-eer, en-gin-eer, man a - live! —
sto - ry. ————— Mis-ter Joy, Mis-ter Gloom, were my friends —

Can't you do bet-ter than six-ty five? — As the towns go
Stuck with me from the start to the end. — Chick-en reels and

fly-ing by ————— You're gon-na hear me cry - ing.
home cooked meals — Gave me that down-South feel - ing.

Chorus

"Good-bye East, good-bye West, good-bye North and all the rest, Hel-lo!

p *mf* *cresc.* *sfz*

Swan-ee Hel - lo! Had my fun now I'm done, Wel-come home your

p *cresc.*

na-tive Hel-lo! Swan-ee Hel - lo! Oh, Mis-ter!

sfz

Con-duct-or, don't give me air, Please Mis-ter Con-duct-or, I have-n't

got the fare but take my tie, Take my col-lar, Lem-me ride till I can hol-ler,

p *mf cresc.*

Hel-lo! Swan-ee hel - lo! - lo!

sfz *p* *D.S.*

BE SURE TO GET COPIES OF THESE BIG SONG HITS

Mary Lou

By ABE LYMAN,
GEORGE WAGGENER,
J. RUSSEL ROBINSON

Mary Lou, Mary Lou Cross my heart I love you!

p-f

The musical score for 'Mary Lou' is written in 2/4 time with a key signature of one sharp (F#). It features a vocal line and a piano accompaniment. The piano part begins with a *p-f* dynamic marking. The lyrics are: 'Mary Lou, Mary Lou Cross my heart I love you!'.

Animal Crackers

By FRED RICH,
SAM COSLOW,
& HARRY LINK

I'm just wild about an-i-mal crackers, an-i-mal crackers, I can't live without an-i-mal crackers,

p-f

The musical score for 'Animal Crackers' is written in 2/4 time with a key signature of one sharp (F#). It features a vocal line and a piano accompaniment. The piano part begins with a *p-f* dynamic marking. The lyrics are: 'I'm just wild about an-i-mal crackers, an-i-mal crackers, I can't live without an-i-mal crackers,'.

Petrushka

By BILLY ROSE
& FRED FISHER

"Oh! Pe-trush - ka Oh! Pe-trush - ka Hear the boat - men call - ing me!

p-f

The musical score for 'Petrushka' is written in 2/4 time with a key signature of one sharp (F#). It features a vocal line and a piano accompaniment. The piano part begins with a *p-f* dynamic marking. The lyrics are: '"Oh! Pe-trush - ka Oh! Pe-trush - ka Hear the boat - men call - ing me!'.

Words by
ALFRED BRYAN

I'm Satisfied

Music by
JACK LITTLE

I'm sat - is - fied to know I've tried I've done the best I can do.

The musical score for 'I'm Satisfied' is written in 2/4 time with a key signature of one sharp (F#). It features a vocal line and a piano accompaniment. The lyrics are: 'I'm sat - is - fied to know I've tried I've done the best I can do.'

Tell Me To-Night

By PIERRE CONNOR
& JACK LITTLE

Tell me to - night — tell me to - night — Do you real - ly love

p-f

The musical score for 'Tell Me To-Night' is written in 2/4 time with a key signature of one sharp (F#). It features a vocal line and a piano accompaniment. The piano part begins with a *p-f* dynamic marking. The lyrics are: 'Tell me to - night — tell me to - night — Do you real - ly love'.

The Above Numbers are Published and Copyrighted by Henry Waterson, Inc. 1571 Broadway, N. Y.
These Songs for sale at all Music Dealers or sent direct for 35¢ or any three for one dollar.
Also obtainable on all Phonograph Records and Music Rolls.