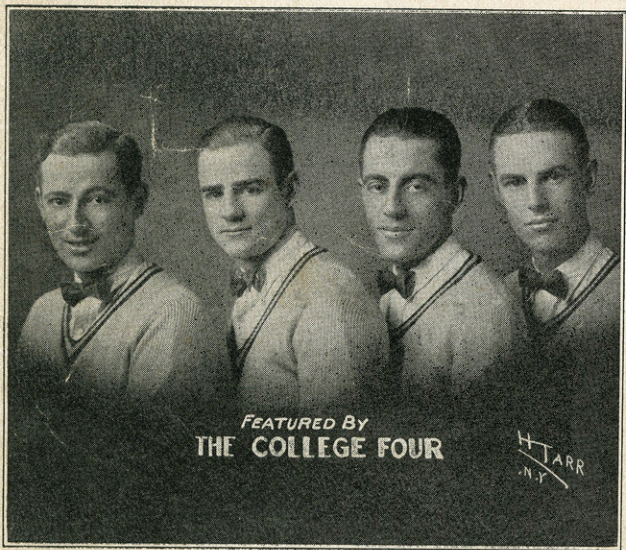


12/20/83 38
"GIMME" A LITTLE KISS

WILL "YA" HUH?

Donatha Clark



FEATURED BY
THE COLLEGE FOUR

H. TARR
N.Y.

By
Roy Turk
Jack Smith
and
Maceo-Pinkard



Irving Berlin, Inc.
MUSIC PUBLISHERS
1607 Broadway New York

Perret

MADE IN USA

"GIMME" A LITTLE KISS
WILL "YA" HUH?



By
Roy Turk
Jack Smith
and
Maceo-Pinkard

Irving Berlin, Inc.
MUSIC PUBLISHERS
1607 Broadway New York



Perret



SM6918

"Gimme" A Little Kiss WILL "YA" HUH?

Tune Ukulele

G C E A

By ROY TURK
JACK SMITH &
MACEO PINKARD

(Slow Fox Tempo)

Piano *f*

VOICE

Till Ready *p*

A lit - tle boy was since
It's been a year

wild a - bout, A lit - tle girl who found it out, She tried to play so
first they met, He has - n't quite suc - ceed - ed yet, A month a - go he

"Hard to get," He has - n't e - ven kissed her yet, He leaves her when she don't
held her hand, His pa - tience, I can't un - der - stand, That they're en - gaged

Ukulele Arr. by MAY SINGHI BREEN

Copyright MCMXXVI by IRVING BERLIN Inc., 1607 Broadway, N.Y.C.

turns him down, Comes back a - gain and hangs a - round,
mean a - thing, He's in a rage takes back his ring,

Wait - ing for one kiss, While he pleads like this:
Gives it back once more, While he starts to roar:

CHORUS

"Boy" "Gim-me" a lit - tle kiss Will "Ya" Huh? What are "ya" gon - na miss
"Boy" "Gim-me" a lit - tle kiss Will "Ya" Huh? Must I go on like this
"Girl" "Gim-me" a lit - tle coat Will "Ya" Huh? Sa - ble - or mink or goat

p-f

Will "Ya" Huh? Gosh! oh gee! — Why do you re - fuse?
 Will "Ya" Huh? Once a - gain a plea I'm gon - na make
 Will "Ya" Huh? My poor hand is bare as an - y - thing

I can't see — what you've got to lose, Aw, "gim-me" a lit - tle squeeze
 Tell me when — do I get a break, Aw, say that you're giv - in' in,
 I could stand a brace - let or a ring, Aw, "gim-me" a lit - tle car

Will "Ya" Huh? Why do you "wan - na" make me blue? I'
 Will "Ya" Huh? An - y - thing that you ask, I'll do I'll
 Will "Ya" Huh? That would be might - y nice to do A

would - n't say a word if I were ask - in' for the world, But
 take you for a bug - gy ride, where we can be a - lone, And
 Pack - ard or a Lin - coln or a Ca - dil - lac 'Se - dan, I'll

what's a lit - tle kiss be - tween a "fel - ler" and his girl? Aw, "gim - me" a lit - tle kiss,
 once you kiss me, you will nev - er think of walk - ing home, Aw, "gim - me" a lit - tle kiss,
 e - ven take a Rolls and you can add a chauff - eur man, But don't you give me a Ford,

Will "Ya" Huh? And I'll give it right back to you. you.
 Will "Ya" Huh? Or I'll steal a - bout ten from you. you.
 Will "Ya" Huh? Or I'll give it right back to you. you.

...
 HIS
 MBER
 can
 e had
 your
 ograph
 your
 ayer -
 iano
 ...



THE GREATEST COMEDY SONG HIT IN YEARS

THAT CERTAIN PARTY

Words by
GUS KAHN

Music by
WALTER DONALDSON

CHORUS

Has she got naugh-ty eyes? Yes, she has got naugh-ty eyes, That cer-tain,
Has she got you know what? Yes, she has got you know what, That cer-tain,

THAT CER-TAIN PAR - TY You know the one I mean,
THAT CER-TAIN PAR - TY Has she got I for-got,

Sure, you know the one I mean, THAT CER-TAIN PAR-TY OF MINE
Yes she has got I for-got THAT CER-TAIN PAR-TY OF MINE

Copyright MCMXXV by IRVING BERLIN, Inc. 1607 B'way N.Y.
International Copyright Secured Made in U.S.A. All Rights Reserved

COPIES ON SALE WHEREVER MUSIC IS SOLD
This Number can also be had for your Phonograph and Player Piano



THE SONG THAT IS DIFFERENT

POOR PAPA

HE'S GOT NOTHIN' AT ALL

Words by
BILLY ROSE

Music by
HARRY WOODS

CHORUS

Ma - ma's got shoes, ma - ma's got clothes, Ma - ma's got these and
Ma - ma eats ham, ma - ma eats lamb, Ma - ma eats bread and

ma ma's got those, But poor pa - pa, poor pa - pa,
straw - ber - ry jam, But poor pa - pa, poor pa - pa,

He's got noth - in' at all. Ma - ma goes here
He eats noth - in' at all. Ma - ma says Ooh

Copyright MCMXXVI by IRVING BERLIN Inc., 1607 Broadway, N. Y. C.
International Copyright Secured Made in U.S.A. All Rights Reserved

COPIES ON SALE WHEREVER MUSIC IS SOLD

This Number can also be had for your Phonograph and Player Piano