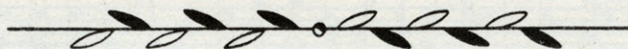


CONEY ISLAND WASHBOARD



Lyric by
NED NESTOR and
CLAUDE SHUGART

Music by
HAMPTON DURAND
and **JERRY ADAMS**



AMERICAN ACADEMY of MUSIC

INCORPORATED
1619 BROADWAY • NEW YORK CITY

Sole Selling Agents — Mills Music, Inc.,
1619 Broadway, New York 19, N. Y.

CONEY ISLAND WASHBOARD

Lyric by
NED NESTOR and
CLAUDE SHUGART

Music by
HAMPTON DURAND
and JERRY ADAMS



HENRY A. YOHANAN

GUY LOMBARDO

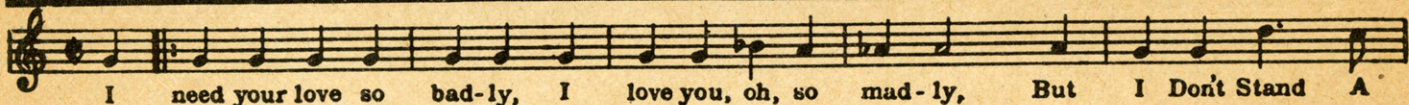


AMERICAN ACADEMY of MUSIC
INCORPORATED
1619 BROADWAY • NEW YORK CITY

OUTSTANDING SONG SUCCESSES

for your Modern Music Library

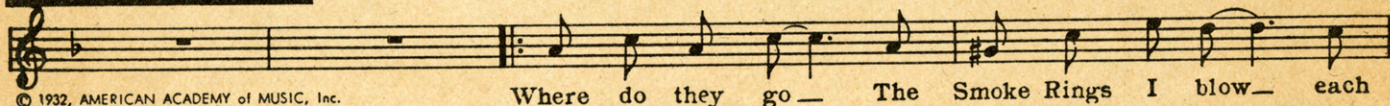
I DON'T STAND A GHOST OF A CHANCE WITH YOU



© 1932, AMERICAN ACADEMY of MUSIC, Inc.

Vocal50 Dance Orchestration by Phil Lang 1.00 Swingtette Arrangement by Jimmy Dale60

SMOKE RINGS



© 1932, AMERICAN ACADEMY of MUSIC, Inc.

Vocal50 Dance Orchestration by Will Hudson 1.00 Swingtette Arrangement by Jimmy Dale60
Piano Transcription by Alex Hill60

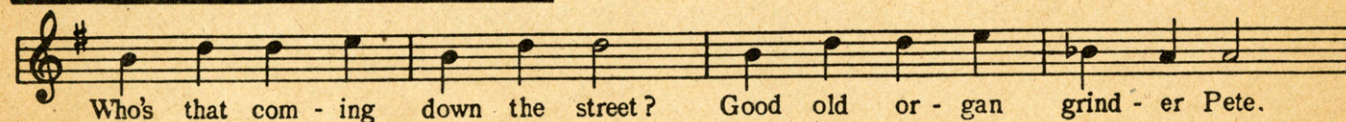
IF IT'S TRUE



© 1933, AMERICAN ACADEMY of MUSIC, Inc.

Vocal50 Dance Orchestration by Will Hudson 1.00

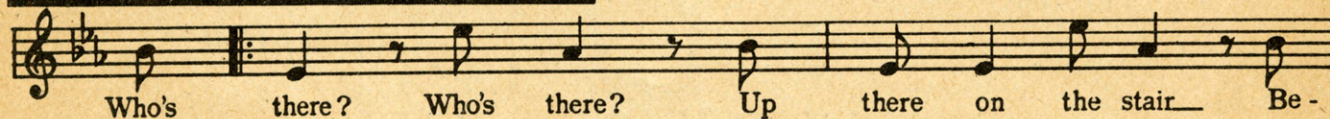
ORGAN GRINDER'S SWING



© 1936, AMERICAN ACADEMY of MUSIC, Inc.

Vocal50 Swingtette Arrangement by Will Hudson60 Piano Accordion Transcription
Dance Orchestration by Will Hudson 1.00 Piano Solo by Lou Leaman60 by Andy Arcari50

MR. GHOST GOES TO TOWN



© 1936, AMERICAN ACADEMY of MUSIC, Inc.

Vocal50 Swingtette Arrangement by Will Hudson60 Piano Accordion Transcription
Dance Orchestration by Will Hudson 1.00 Piano Solo by Lou Leaman60 by Andy Arcari50

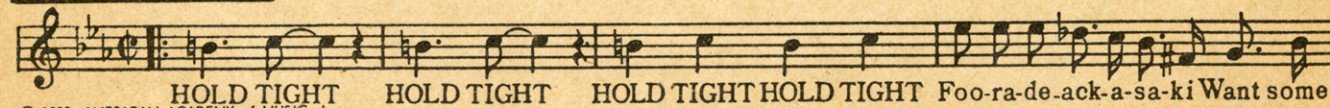
CEMENT MIXER



© 1946, AMERICAN ACADEMY of MUSIC, Inc.

Vocal50 Dance Orchestration by Will Hudson75

HOLD TIGHT



© 1939, AMERICAN ACADEMY of MUSIC, Inc.

Vocal50 Dance Orchestration by Will Hudson 1.00

AMERICAN ACADEMY OF MUSIC, Inc. 1619 Broadway, New York 19, N. Y.
Sole Selling Agent: MILLS MUSIC, Inc.

SM6875

Coney Island Washboard

Lyric by
NED NESTOR &
CLAUDE SHUGART

Tune Uke
G C E A

Music by
HAMPTON DURAND
& JERRY ADAMS

Moderato

The piano introduction consists of two staves. The right hand plays a melodic line with eighth and sixteenth notes, while the left hand provides a harmonic accompaniment with chords and single notes. The tempo is marked 'Moderato' and the dynamics start with a forte 'f' marking.

The first system of the song features a vocal line and piano accompaniment. The vocal line begins with the lyrics: "Down by the beach lived the sweetest lit-tle peach / You nev-er heard sweet-er notes from a song-bird". The piano accompaniment includes guitar chord diagrams above the staff and dynamic markings such as 'mp' and 'fz'.

The second system continues the vocal and piano accompaniment. The lyrics are: "And I must say she just had the cut-est way / Can't get e-nough when this ba-by does her stuff". The piano accompaniment continues with guitar chord diagrams and dynamic markings.

The third system concludes the vocal and piano accompaniment. The lyrics are: "Play-ing a chord up-on a wash-board / She croons a-long when she plays a song". The piano accompaniment includes guitar chord diagrams and dynamic markings.

Folks would gather 'round from ev - ry - where in town why just to hear her play. —
 She's more than won - der - ful and more than mar - vel - ous she just can't go wrong. —

Chorus

On her Con - ey Is - land washboard she would play — You could

mp - f

hear her on the board - walk ev'ry day Soapsuds all a -

round, bub - bles on the ground Rub - a - dub - a dub in her lit - tle tub

All her tunes she found Thimbles on her fingers made the noise She played

"Charleston" with the laundry for the boys She could rag a tune

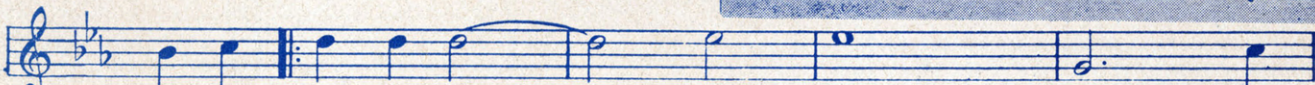
right thru' the knees of your brand new silk B. V. D's With her Con-ey Is-land

wash-board round-e - lay. On her - lay.

Duke Ellington

Duke Ellington's music has long been hailed the world over for its inventiveness, for its expression of the verve and tempo of our modern times. His standing in the American Society of Composers, Authors and Publishers and the consistent lead he and his orchestra maintain in America's popularity polls attest to his high regard by the lovers of contemporary music. His songs belong in every music library.

SOLITUDE



In my SOL - I - TUDE you haunt me With

©1934, AMERICAN ACADEMY of MUSIC, Inc.

Vocal	.50	Dance Orchestration by Will Hudson	1.00	Piano Duet by J. Louis Merkur	.75
Piano Transcription by Norman Ellis	.60	10 in 1 Arrangement by Jimmy Dale	.75	Accordion Transcription by Tito	.50
Simplified Piano Solo by Ted Mossman	.40	Swingtette Arrangement by Will Hudson	.60	Piano Accordion Solo by Galla-Rini	.50

IN A SENTIMENTAL MOOD



In A Sen - ti - men - tal Mood I can see the stars come thru my room

©1935, AMERICAN ACADEMY of MUSIC, Inc.

Vocal	.50	Dance Orchestration by Alex Hill	1.00	Accordion Transcription by Tito	.50
Piano Transcription by Norman Ellis	.60	Swingtette Arrangement by Jimmy Dale	.60	Piano Accordion Solo by Galla-Rini	.50

PRELUDE TO A KISS

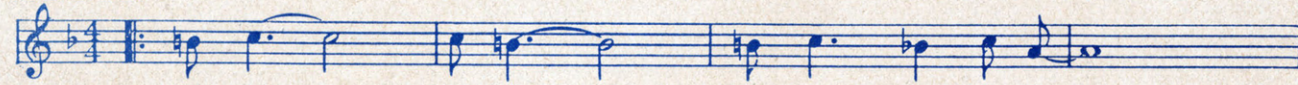


If you hear a song in blue like a flow - er cry - ing

©1938, AMERICAN ACADEMY of MUSIC, Inc.

Vocal	.50	Piano Transcription by Norman Ellis	.60	Accordion Transcription by Tito	.50
-------	-----	-------------------------------------	-----	---------------------------------	-----

AZURE



Drift-in' Dream-in' In an Az - ure mood,

©1937, AMERICAN ACADEMY of MUSIC, Inc.

Vocal	.50	Piano Transcription by Lou Singer	.60	Dance Orchestration by Will Hudson	1.00
-------	-----	-----------------------------------	-----	------------------------------------	------

PYRAMID



When I see a PY - RAM-ID The

©1938, AMERICAN ACADEMY of MUSIC, Inc.

Vocal	.50	Piano Transcription by Norman Ellis	.60	Dance Orchestration by Vic Schoen	1.00
-------	-----	-------------------------------------	-----	-----------------------------------	------

CARAVAN



Night and stars a - bove that shine so

©1937, AMERICAN ACADEMY of MUSIC, Inc.

Vocal	.50	Simplified Piano Solo by Ted Mossman	.40	Swingtette Arrangement by Jimmy Dale	.60
Piano Transcription by Norman Ellis	.60	Dance Orchestration by Will Hudson	1.00	Accordion Transcription by Tito	.50
				Piano Accordion Transcription by Andy Arcari	.50

AMERICAN ACADEMY OF MUSIC, Inc. 1619 Broadway, New York 19, N. Y.

Sole Selling Agent: MILLS MUSIC, Inc.