

# The Maiden with the Dreamy Eyes.



BY  
**J.M. JOHNSON**  
**COLE & ROSAMOND JOHNSON**

AS SUNG BY ANNA HELD

## IN "THE LITTLE DUCHESS"

Direction of FLORENCE ZIEGFELD, JR.

Published by **JOS. W. STERN & CO.** 34 East 21st St. NEW YORK  
MARK STERN BUILDING  
LONDON JOS. W. STERN & CO.  
NEW YORK CHICAGO AND LONDON  
"THE HOUSE OF FITS"  
"GERALD ROSS & CO."

# "While the Convent Bells Were Ringing."

THE NEW SONG HIT by the Author of "MY LITTLE GEORGIA ROSE."

A beautiful ballad by the author of the following songs which are everybody's favorites: "My Little Georgia Rose," "My Heart's To-night in Texas," "When the Birds Go North Again," and many others. Don't fail to play over this melody. It's the season's greatest Hit.

CHORUS.

*con espressione.*

While the Con-vent bells were ring - ing, soft and sweet a - cross the sea, . .

And the twi - light shades were fall - ing, then she said "Good-bye" to me;

As the sun went down in splend - or, then I kissed her lips so ten - der,

While the Con - vent bells were ring - ing o - ver the sea. . . .

While the Convent Bells &c. 3 p.—3rd page.

Copyright, MCM, by JOS. W. STERN & CO.

This Composition can be obtained of your Music Dealer, or if not, send 25 cents to the Publishers.

**JOS. W. STERN & CO.,**

34 East 21st Street, New York City.

COMPLETE CATALOGUES OF  
Vocal and Instrumental Publications  
MAILED ON REQUEST.

SM 250

25-  
23  
34  
6130  
20

# The Maiden With The Dreamy Eyes.

Words by J.W. Johnson.

Music by Bob Cole.

Moderato.

*mf*

Musical notation for the piano introduction, consisting of two staves (treble and bass clef) in 2/4 time. The melody is in the right hand, and the accompaniment is in the left hand. The key signature has two flats (B-flat and E-flat).

1. No doubt you've seen the maiden with the dimple in her chin, A  
 2. The maid - en with the dreamy eyes you cannot well re-sist, There's  
 3. You get a-board a Broadway car and get a seat perhaps, That's

Musical notation for the first verse, including a vocal line and piano accompaniment. The piano part includes a repeat sign and a dynamic marking of *p*.

ve - ry charming girl is she; The maid with feet and ankles that a  
 magnet - is - m in those eyes, They make a fel-low feel that she is  
 quite a luck - y thing to do While aged fe-male passengers are

Musical notation for the second verse, including a vocal line and piano accompaniment. The piano part includes a dynamic marking of *p* and an accent mark (>).

Copyright MCMI by Jos.W.Stern & Co.

Copyright and performing rights secured for Great Britain and all British Colonies & Possessions.  
 Reproduction of this Music on Mechanical Instruments strictly prohibited. All rights reserved.

beau - ty prize would win, A ve - ry pret - ty sight to  
 long - ing to be kissed, And there is where the dan - ger  
 hang - ing on the straps, And ev' - ry bo - dy stares at

see. But the maid - en that's most charm - ing, All your  
 lies, Al - though mar - riage you're op - pos - ing, When you  
 you, With the crowd that still comes pil - ing, Comes a

wa - ri - ness dis - arm - ing, With se - duc - tive - ness a -  
 see her eyes half clos - ing, You can - not re - sist pro -  
 maid with eyes be - guil - ing, And you give your seat up

larm - ing, Is the maid - en with the dream - y eyes;  
 pos - ing To the maid - en with the dream - y eyes,  
 smil - ing To the maid - en with the dream - y eyes,

## CHORUS.

There are eyes of blue, There are brown eyes too, There are

eyes of ev'ry size, and eyes of ev'ry hue; But I sur-

mise, That if you are wise, You'll be care-ful of the

maid-en with the dream-y eyes.— There are eyes.—

1. 2. D.S.  $\text{§}$

D.S.  $\text{§}$

# Excerpts from the latest Hits of the Season.

Written by Johnson, Cole and Johnson.

## NOBODY'S LOOKIN' BUT DE OWL AN' DE MOON.

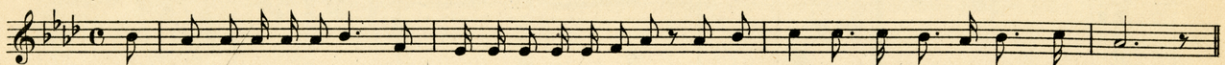
CHORUS.



No - bod - y's look - in' but de owl an' de moon, De night is balm - y

Copyright 1902 by Jos.W.Stern & Co.

## THE OLD FLAG NEVER TOUCHED THE GROUND. (PATRIOTIC MARCH SONG.)

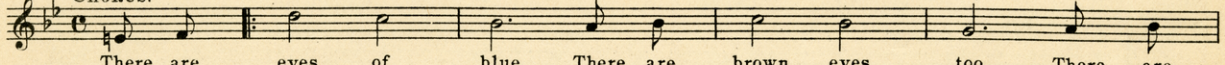


She's been in many a fix Since sev-en-teen seven-ty six, But the old flag has nev-er touched the ground.

Copyright 1902 by Jos.W.Stern & Co.

## THE MAIDEN WITH THE DREAMY EYES.

CHORUS.

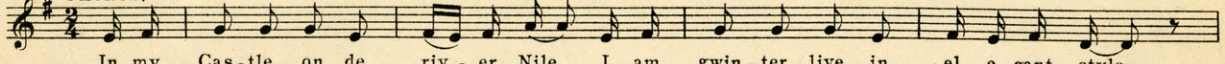


There are eyes of blue, There are brown eyes too, There are

Copyright 1902 by Jos.W.Stern & Co.

## MY CASTLE ON THE NILE.

CHORUS.

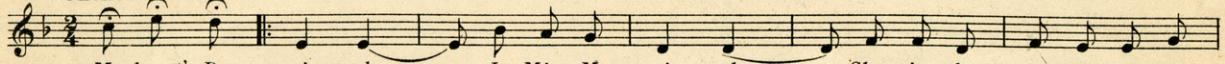


In my Cas-tle on de riv-er Nile I am gwin-ter live in el-e-gant style

Copyright 1902 by Jos.W.Stern & Co.

## MY HEART'S DESIAH.

CHORUS.

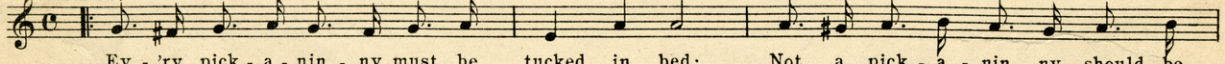


My heart's De - si - ah Is Miss Ma - ri - ah, She is the ap - ple of my

Copyright 1902 by Jos.W.Stern & Co.

## WHEN DE JACK O' LANTERN STARTS TO WALK ABOUT.

CHORUS.

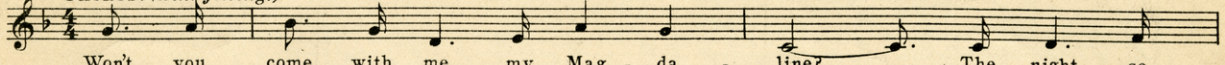


Ev - ry pick - a - nin - ny must be tucked in bed; Not a pick - a - nin - ny should be

Copyright 1902 by Jos.W.Stern & Co.

## MAGDALINE MY SOUTHERN QUEEN.

CHORUS. (with feeling.)

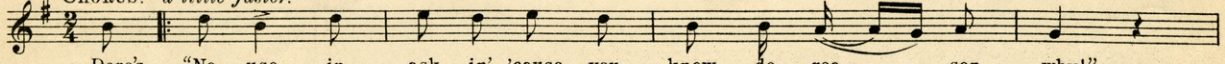


Won't you come with me my Mag - da - line? The night se -

Copyright 1902 by Jos.W.Stern & Co.

## NO USE IN ASKIN' 'CAUSE YOU KNOW THE REASON WHY.

CHORUS. a little faster.

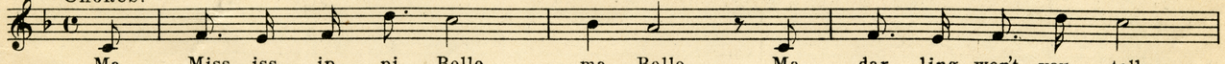


Dere's "No use in ask - in' 'cause you know de rea - son why!"

Copyright 1902 by Jos.W.Stern & Co.

## MA MISSISSIPPI BELLE.

CHORUS.

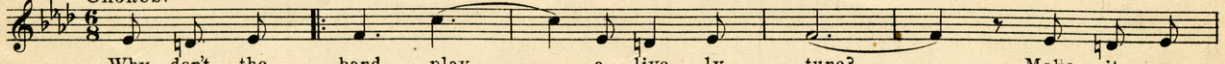


Ma Miss - iss - ip - pi Belle, ma Belle, Ma dar - ling won't you tell,

Copyright 1902 by Jos.W.Stern & Co.

## WHY DON'T THE BAND PLAY?

CHORUS.

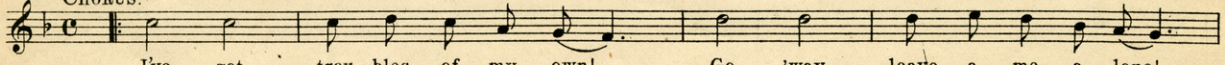


Why don't the band play a live - ly tune? Make it a

Copyright 1902 by Jos.W.Stern & Co.

## I'VE GOT TROUBLES OF MY OWN.

CHORUS.



I've got trou - bles of my own! Go 'way, leave a me a - lone!

Copyright 1902 by Jos.W.Stern & Co.

Complete Copies can be had at all Music Stores.

PUBLISHED BY JOS. W. STERN & CO., 34 E. 21st ST., N.Y.

# George Rosey's LATEST SUCCESSES

## On Duty. March and Two-Step.

Tempo di Marcia.

by GEORGE ROSEY.

Piano.

Copyright 1905 by G. M. Roseberg.  
Copyright secured for Great Britain and all British Colonies and Possessions.  
Reproduction of this Music on Mechanical Instruments strictly prohibited. All rights reserved.

## HAIL TO THE BRIDE. March and Two-Step.

Trio.

by GEORGE ROSEY

JOS. W. STERN & CO. N. Y.  
Copyright, 1905, by G. M. Roseberg.  
Copyright secured for Great Britain and all British Colonies.  
All rights reserved.

## The Gainsborough. March and Two-Step.

Tempo di Marcia.

by GEORGE ROSEY.

Piano.

JOS. W. STERN & CO. N. Y.  
Copyright, 1905, by G. M. Roseberg.  
Copyright secured for Great Britain and all British Colonies.  
Reproduction of this Music on Mechanical Instruments strictly prohibited. All rights reserved.

## Adoration. WALTZES.

by GEORGE ROSEY

Andante moderato.

Piano.

Waltz.

1.

JOS. W. STERN & CO. N. Y.  
Copyright 1905 by G. M. Roseberg.  
Copyright and performing rights secured for Great Britain and all British Colonies and Possessions.  
Reproduction of this Music on Mechanical Instruments strictly prohibited. All rights reserved.

## La Spanola. Spanish Medley Waltzes.

Selected and arranged by  
GEORGE ROSEY

Moderato.

Piano.

Waltz.

1.

JOS. W. STERN & CO. N. Y.  
Copyright, 1905, by G. M. Roseberg.  
Copyright secured for Great Britain and all British Colonies.  
All rights reserved.

## Belles and Beaux. WALTZES.

by GEORGE ROSEY.

Andante moderato.

Piano.

Waltz.

1.

JOS. W. STERN & CO. N. Y.  
Copyright 1905 by G. M. Roseberg.  
Copyright secured for Great Britain and all British Colonies and Possessions.  
Reproduction of this Music on Mechanical Instruments strictly prohibited. All rights reserved.

These Compositions can be obtained of all Up-to-Date Music Dealers

# "MAY-BE."

This is the sweet-melodied love song which has become so popular in concert and drawing room. As the feature song of the Primrose and Dockstader Minstrels, it has won great favor everywhere. Be sure and try it over on your piano, and order a complete copy from your music dealer.

## CHORUS.

May be in the gold - en Sum - mer, When the ros - es bloom a - gain;

Love may steal in - to your heart, dear, May be you will love me then;

*Sva.*

*Ped.*

May be in the drear - y Win - ter, When the storm sweeps land and sea.

May be in the gen - tle spring - time, May be, you will say, May be.

*rit.*

*D.C.*

MAY BE. 3 p.—3rd page.

Copyright, MCM1, by JOS. W. STERN & Co.

This Composition can be obtained of your Music Dealer, or if not, send 25 cents to the Publishers.

**JOS. W. STERN & CO.,**

34 East 21st Street, New York City.

COMPLETE CATALOGUES OF  
Vocal and Instrumental Publications  
MAILED ON REQUEST.