

# ISLE D'AMOUR

SUNG BY

JOSE COLLINS

IN

ZIEGFELD'S FOLLIES

Series of

1913

No. 2-Medium (Mez. or Bar.) C (A-G)

LYRIC BY EARL CARROLL  
MUSIC BY LEO. EDWARDS

6

OPERATIC EDITION  
LEO. FEIST NEW YORK  
ASCHERBERG HOPWOOD & CREW, LTD. LONDON, ENGLAND

SM 2344

# Isle D'Amour.\*

(Isle of Love.)

Lyric by  
EARL CARROLL.

No 2. Medium Voice.  
(No 1, Original Key in E $\flat$  for High Voice.)  
(No 3, in A $\flat$  for Low Voice)

Music by  
LEO. EDWARDS.

*Allegro*

The piano introduction is in 3/4 time, marked *Allegro*. It features a melody in the right hand and a supporting bass line in the left hand. The melody begins with a series of eighth notes, followed by a half note, and then a quarter note. The bass line consists of a steady eighth-note accompaniment. The piece concludes with a final chord in the right hand.

*Valse moderato con espress.*

I know an Is - land, my dear, — An Is - land to where lov - ers

The first system of the vocal and piano accompaniment. The vocal line is in 3/4 time, marked *Valse moderato con espress.*. The lyrics are "I know an Is - land, my dear, — An Is - land to where lov - ers". The piano accompaniment features a waltz-like rhythm with a steady eighth-note bass line and chords in the right hand.

steer, — There is no chart, On - ly your heart To guide you

The second system of the vocal and piano accompaniment. The lyrics are "steer, — There is no chart, On - ly your heart To guide you". The piano accompaniment includes a *mf* (mezzo-forte) dynamic marking and features a waltz-like rhythm with a steady eighth-note bass line and chords in the right hand.

to its shore so near. No heart un - touched can set sail, —

*legato* *rall.* *a tempo*

The third system of the vocal and piano accompaniment. The lyrics are "to its shore so near. No heart un - touched can set sail, —". The piano accompaniment includes *legato*, *rall.* (ritardando), and *a tempo* markings. The waltz-like rhythm continues with a steady eighth-note bass line and chords in the right hand.

\*) Also published as  
a Hestitation Waltz  
for Piano Solo.

Hearts with-out love al-ways fail; \_\_\_\_\_ Close by my side, with just

*accel.*

me as your guide, We will sail to this Isle of Love. \_\_\_\_\_

*colla voce* *rit.*

Allegro moderato

Ah! \_\_\_\_\_ Ah! \_\_\_\_\_

Fol - low me, dear, fol - low me, dear;

*poco a poco cresc. e accel.*

3010-4

THE LATEST PARISIAN ONE-STEP  
 "A ZUT ALORS" (As You Please)  
 Makes One-Stepping A Pleasure

Ah! Ah!

*f*

Oh! I'll love you, How I'll love you, Nev - er to be

*colla voce*

*f*

Tempo I.

lone - ly, If you love me on - ly. Won - der - ful Isle D' A - mour, —

*rit.* *dim* *p*

One lit - tle Isle to be sure, — Still love can't die, 'Neath its blue sky.

*mf*

THE NEWEST DANCING SENSATION  
**THE "URIEL" MAXIXE**  
 (La Matichie Brésilienne)

This lit-tle Isle for you and I. Come, love, we'll drift for a - while, —

*legato* *rall.* *a tempo*

You in my arms to this Isle, — My lit-tle Isle D' A - mour, —

*mf accel. e cresc.*

My lit-tle Isle D' A - mour, — No one shall know, dear, that I love you so on our

*marcato*

Isle; Ah! — Ah! — Ah! — A - mour. —

*Cadenza* *Allegro* *Silent* *p* *ff*

3010 - 4

Something "New" but "Different"

TELLER, SONS & DORNER, NEW-YORK.

"CHAPEL CHIMES" - Reverie.  
 Introducing that fascinating CHIME EFFECT  
 Be sure to get a copy - you will thoroughly enjoy it.

As Advertised in

# "THE SATURDAY EVENING POST"



"You Can't Go Wrong with a 'Feist' Song"

"WHEN YOU PLAY IN THE GAME OF LOVE"

LE.

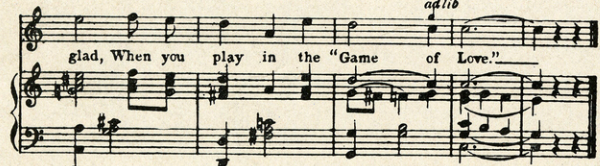
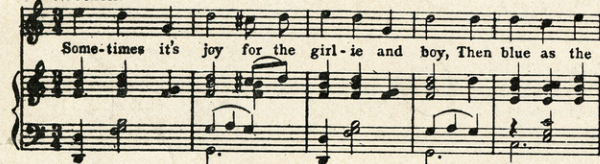
"KATHLYN"  
Hesitation WALTZ Valse-Boston

## The Greatest Song about the Greatest Game in the World

"Our next song,"—said Al Piantadosi and Joe Goodwin, authors of "That's How I Need You" (one of the few really great Ballad successes)—"must be still greater."

This seemed like painting the lily. But that is exactly what this rising team of writers have done. "When You Play in the Game of Love" is one ballad in a thousand. As old as is the "Game of Love," never before have its smiles or sorrows been portrayed so naively, so ingeniously, or set to such heart-felt Arcadian-simple melody as in this latest ballad-hit, "When You Play in the Game of Love."

### REFRAIN

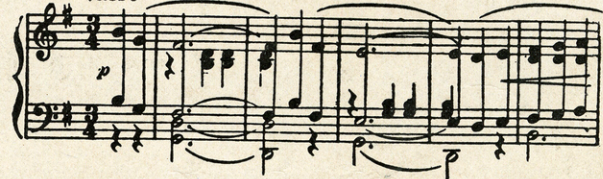


## The "Movie" Sensation becomes the Waltz Sensation

Are you one of the hundreds of thousands who can hardly wait for next week to come, when at some moving picture theatre you are held spell-bound as Miss Williams unfolds the story of Selig's spectacular \$140,000 serial Photodrama—"The Adventures of Kathlyn"?

We've dedicated a Waltz to Miss Williams. We've named it "Kathlyn." A waltz to be so named had to be a great waltz. IT IS. Miss Williams calls it "HER Waltz." As a HESITATION or VALSE BOSTON it has the Rhythm dancers are "hungry" for.

### Waltz



Try these few bars. Nothing but the full score can do justice to the complete pieces.

**BOTH ON SALE TODAY—Pacific Coast Cities and Canada, 15c. Everywhere else, 10c**

At any Woolworth, Kresge, Kress, McCrory, or any other 10c store, Music or Department store

**Everyone is singing these:**

Do You Remember; Everybody Loves My Girl; On the Shores of Italy; Celebratin' Day in Tennessee; I'm On My Way to Mandalay; You Look Just Like Your Mother, Mary; I'd Still Believe in You, and the new comic hit, "Who Paid the Rent for Mrs. Rip Van Winkle."

**Society is dancing these:**

Ecstasi Tango; A Zut Alors, One Step; Isle D'Amour, Hesitation; Flower of the Amazon, Maxixe; The Gobbler's Gambol, Trot; Red Man, One Step; The Old Wedding Gown, Valse Boston; The Uriel Maxixe.

**IMPORTANT—If your dealer can't supply you, send us six 2c stamps for one, or a dollar bill for any nine pieces**

Try these pieces on your Player-Piano or Talking Machine. Orchestra Leaders will gladly play them on request.

**LEO FEIST, Inc., Feist Bldg., 231 West 40th Street, New York City**