

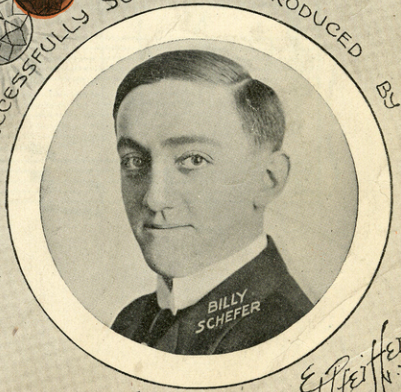
23  
**MY HIDDEN TREASURE**



WORDS BY  
**BERT KALMAR**

MUSIC BY  
**HARRY PUCK**

SUCCESSFULLY SANG AND INTRODUCED BY



THE BERT KALMAR & HARRY PUCK  
**KALMAR & PUCK**  
MUSIC CO. INC.  
152 WEST 45<sup>TH</sup> ST. NEW YORK CITY



*E. Pfeiffer*

# TRY THIS ON YOUR PIANO

## Come up to-night

Words by  
BERT KALMAR

Music by  
HARRY PUCK

### CHORUS

Come up to - night my hon - ey, Come up to - night

*p-f*

Whist - le so I'll know it's you

(Whistle)

Come up to - night and wear your love mak - ing clothes

I'll find a co - zy corn - er no bod - y knows

Copyright 1913 by Kalmar & Puck Music Co.  
International Copyright Secured  
Copyright Canada 1913 by Kalmar & Puck Music Co.

SM 2379

# My Hidden Treasure

3

Words by  
BERT KALMAR

Music by  
HARRY PUCK

**Moderato**

mf

First system of piano introduction in 3/4 time, marked *mf*. The music features a melody in the right hand and a bass line in the left hand.

Second system of piano introduction, continuing the melody and bass line.

VOICE

*mp*

I dreamed of hid - den treas - ure, like dream - ers of - ten do, I  
I bless the one who gave me, two eyes so I could see, The

*mp*

Piano accompaniment for the first vocal line, marked *mp*.

*accel.*

*rit.*

found my hid - den treas - ure, When first I looked at you. —  
for - tune that he gave me, When he brought you to me. —

*accel.* *rit.*

Piano accompaniment for the second vocal line, marked *accel.* and *rit.*

Copyright 1913 by Kalmar & Puck Music Co. Inc.  
International Copyright Secured.  
Copyright Canada 1913 by Kalmar & Puck Music Co. Inc.

4 REFRAIN

Valse lento

*p*

I looked in your eyes and found dia - monds, — I

*p*  
*espress.*

Detailed description: This system contains the first two lines of music. The vocal line is in treble clef with a key signature of one sharp (F#) and a 3/4 time signature. The piano accompaniment is in grand staff (treble and bass clefs). The piano part begins with a dynamic marking of *p* and an *espress.* (espressivo) instruction. The lyrics are: "I looked in your eyes and found dia - monds, — I".

looked and found gold in your curls — I

*accel*

*accel*  
*p.*

Detailed description: This system contains the next two lines of music. The vocal line continues with the lyrics: "looked and found gold in your curls — I". The piano accompaniment features an *accel.* (accelerando) marking. The system concludes with a dynamic marking of *p.* (piano).

looked at your lips and found Ru - bies, — I

*dim.*

*dim.*

Detailed description: This system contains the next two lines of music. The vocal line continues with the lyrics: "looked at your lips and found Ru - bies, — I". The piano accompaniment features a *dim.* (diminuendo) marking. The system concludes with another *dim.* marking.

looked at your teeth and found pearls, — I

Detailed description: This system contains the final two lines of music. The vocal line concludes with the lyrics: "looked at your teeth and found pearls, — I". The piano accompaniment continues with the same harmonic structure.

looked for a real hid - den treas - ure, \_\_\_\_\_ I

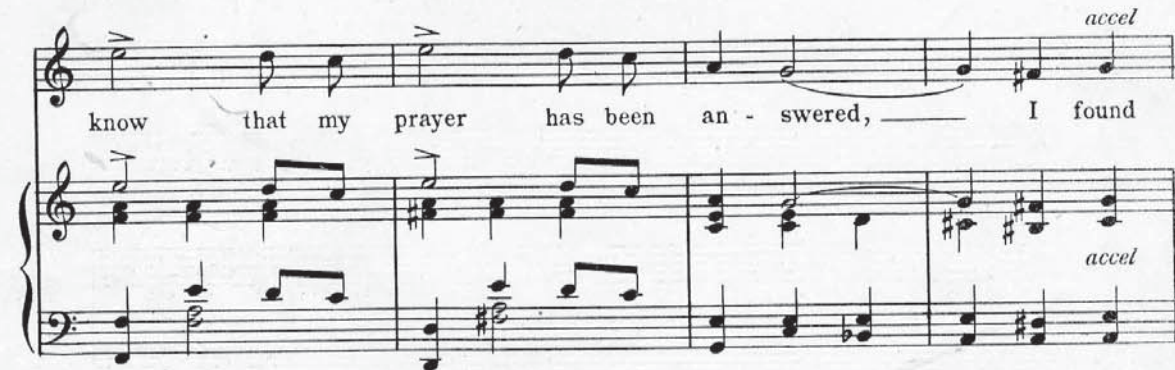


prayed for a love that was true, \_\_\_\_\_ I



know that my prayer has been an - swered, \_\_\_\_\_ I found

*accel*



my hid - den treas - ure, in you. \_\_\_\_\_

*rit.*



TRY THIS ON YOUR PIANO  
YOUR FRIENDS WILL ASK FOR THIS SO HAVE IT IN YOUR HOME

## Over the Garden Wall

Words by  
BERT KALMAR

Music by  
HARRY PUCK

### CHORUS

Now ev-'ry night he goes o-ver, — o-ver, — o-ver — o-ver the gar-den

wall, — Be-side the morn-ing glo-ries she is wait-ing, — When he gets on the

oth-er side, be-fore he gets his breath, — She breaks his fall and that's not all, She

loves him half to death, But ev-'ry night he goes o-ver, o-ver, o-ver, And

International Copyright Secured  
Copyright Canada 1913, by Kalmar & Puck Music Co.

For Sale by all Dealers or Sent direct by Publishers on receipt of 16c. in stamps

**KALMAR & PUCK MUSIC COMPANY, INC.**

152 WEST 45th STREET, NEW YORK