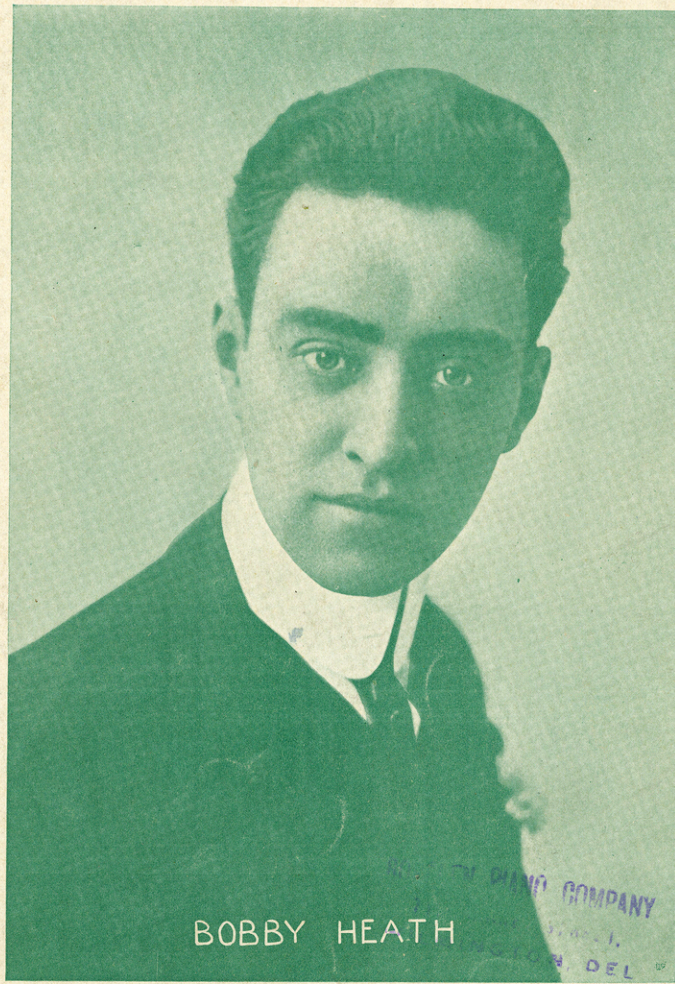


ON THE OLD FRONT PORCH

WORDS BY BOBBY HEATH
MUSIC BY ARTHUR LANGE



BOBBY HEATH

THE JOE MORRIS MUSIC COMPANY
145 WEST 45TH ST. NEW YORK

PARKER

SM 2401

2

"On The Old Front Porch."

Words by
BOBBY HEATH.

Music by
ARTHUR LANGE.

Moderato.

The piano introduction consists of two staves. The right hand starts with a series of chords and eighth notes, while the left hand provides a steady bass line. The tempo is marked 'Moderato' and the dynamic is 'f'.

The first system shows the vocal line and piano accompaniment. The vocal line begins with the lyrics: "There's a fel-low fol-low-ing me, — Im as Just pick out an-y old night, — But be". The piano accompaniment features a melody in the right hand and a bass line in the left hand, with dynamics 'mf' and 'p'.

The second system continues the vocal line and piano accompaniment. The vocal line continues with the lyrics: "ner-vous as — can be, — He might fol-low me, — Till the day is sure the moon is-n't bright, — 'Cause it must be dark, — And she can". The piano accompaniment continues with a similar texture.

Copyright 1913 by Joe Morris Music Co. 145 W. 45th Street New York City.
The Publishers reserve the right to the use of this Music or Melody for Mechanical Instruments
International Copyright Secured. All rights reserved. Albert & Sons, Australian Agents Sidney

through, I won-der what he would do, If I stopped and said,
 be, A-sit-ting right on your knee, - So that you can do,

"How do you do," like other girls do, Why he might die with de-light, — He'd want to
 lots of nice things that no one can see, So if her dreadful old Pa, — Would come

call and love me at night, In the Par-lor, No, in the
 down to give you a jar, — You must un-der-stand if it's

ham-mock, no, Well I think I know just where we'd go:
 dark that's grand, 'Cause the kick he aims will ne-ver land:

Out on the old front porch, Move o-ver Charlie, On the old front porch,

pf

Detailed description: This system contains the first two staves of music. The vocal line (top staff) begins with a treble clef, a key signature of one flat (B-flat), and a common time signature. The lyrics are 'Out on the old front porch, Move o-ver Charlie, On the old front porch,'. The piano accompaniment (bottom two staves) starts with a grand staff. The right hand plays chords and moving lines, while the left hand provides a bass line. A dynamic marking of *pf* (piano-forte) is placed above the piano staff. There are two repeat signs in the piano part, one at the beginning and one in the middle.

now stop, I was on-ly try-ing to steal a lit-tle kiss, Well

Detailed description: This system contains the second two staves of music. The vocal line continues with the lyrics 'now stop, I was on-ly try-ing to steal a lit-tle kiss, Well'. The piano accompaniment continues with similar harmonic and rhythmic patterns as the first system.

kis-ses do in-vite me dear, But Gee, you tried to bite me, On the

Detailed description: This system contains the third two staves of music. The vocal line has the lyrics 'kis-ses do in-vite me dear, But Gee, you tried to bite me, On the'. The piano accompaniment continues with the same style.

old front porch, now don't get an-gry On the old front porch,

Detailed description: This system contains the final two staves of music on this page. The vocal line concludes with the lyrics 'old front porch, now don't get an-gry On the old front porch,'. The piano accompaniment ends with a final chord.

Please dont, Ev - 'ry - thing is love - ly and you're

cud-dled up so dear, When sud - den - ly a voice you know rings

out so loud and clear, Will that young man go home to night or

have his break - fast here? On the old front porch, Oh Char - lie, on the

old front porch. Out on the porch.

Just A Dream of You, Dear

Words by
C. F. Mc NAMARA

Music by
F. HENRI KLIICKMANN.

CHORUS.

Very slowly. espressivo.

Just a dream at sun - set, In the fading

glow, Just a dream of you, dear, When the

sun is low; Just a dream at

twi - light, Ans'ring mem' ry's call,

rall e cresc. Just a dream of you, dear, *a tempo* Just a dream,

that's all. *rit.* all. *D.C.*

Copyright, MCMX, by Victor Kremer, Chicago - New York.
British Copyright

Copyright transferred 1912 to Joe Morris Music Co. 130 W. 37th St. New York