

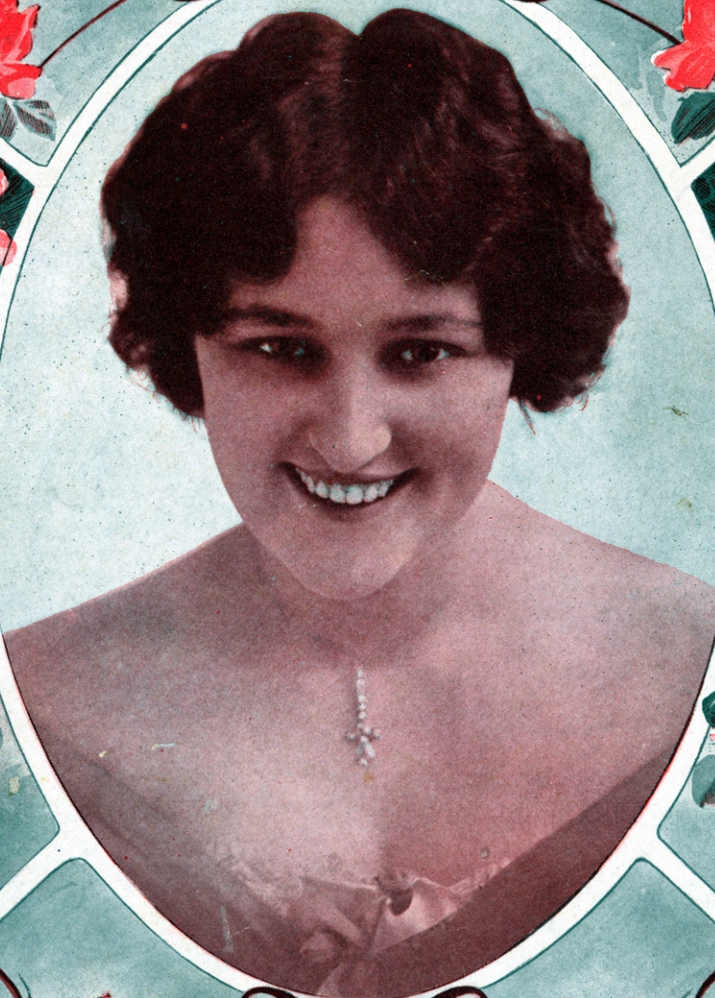
30

TAKE ME BACK

By IRVING BERLIN

SUCCESSFULLY INTRODUCED IN
LEW FIELDS PRODUCTION
"ALL ABOARD"

By **ELSIE IVY**



WATERSON · BERLIN & SNYDER ©
MUSIC PUBLISHERS
112 WEST 38TH ST. NEW YORK

E. Pfeiffer

Try This On Your Piano. Somebody's Coming To My House.

IRVING BERLIN.

Allegro Moderato.

First system of piano introduction. Treble and bass clefs. Time signature 2/4. Dynamics include *f*.

Second system of piano introduction. Treble and bass clefs. Time signature 2/4. Dynamics include *fz* and *p*. A section marked with a double bar line and a star symbol is labeled *Till Ready.*

First system of vocal and piano accompaniment. Treble clef for voice, grand staff for piano. Lyrics: Ev-'ry one's ex-cit-ed down at my house, —
Ev-'ry thing is qui-et down at my house, —

Second system of vocal and piano accompaniment. Treble clef for voice, grand staff for piano. Lyrics: Ev-'ry one's de-light-ed there, — Soon you'll be in -
We must tip-toe through the hall — Soon there'll be a

Copyright MCMXIII by Waterson, Berlin & Snyder Co.
International Copyright Secured.
Copyright Canada MCMXIII by Waterson, Berlin & Snyder Co.

For Sale By All Dealers.

SM 2436

Take Me Back.

IRVING BERLIN.

Andante.

mf rit.

The piano introduction consists of two staves (treble and bass clef) in common time. It begins with a melody in the right hand and a supporting bass line in the left hand. The tempo is marked 'Andante' and the dynamics are 'mf' (mezzo-forte) and 'rit.' (ritardando).

Sweet-heart the day we part - ed Some - how I nev - er
Sweet-heart since we've been part - ed Seems like a thou - sand

The first vocal line is written on a single staff in common time. It features a melody with lyrics. The lyrics are: "Sweet-heart the day we part - ed Some - how I nev - er" on the first line, and "Sweet-heart since we've been part - ed Seems like a thou - sand" on the second line.

p

The piano accompaniment for the first vocal line consists of two staves (treble and bass clef). It provides harmonic support for the vocal melody. The dynamics are marked 'p' (piano).

knew, _____ You'd leave me brok - en heart - ed,
years, _____ For ev - ery hour of glad - ness,

The second vocal line is written on a single staff in common time. It continues the melody with lyrics. The lyrics are: "knew, _____ You'd leave me brok - en heart - ed," on the first line, and "years, _____ For ev - ery hour of glad - ness," on the second line.

The piano accompaniment for the second vocal line consists of two staves (treble and bass clef). It provides harmonic support for the vocal melody.

Pin - ing a - way for you, All that I real - ly
I've paid an hour of tears, Come back and make me

cared for, All that I want - ed near,
hap - py, Why should we live a - part,

All that made life worth liv - - ing,
Come to my arms and an - - swer, The

Van - ished with you my dear.
call of my brok - en heart.

Refrain.

Valse lento.

Take me back, wont you take me back,

Every joy I knew will re-turn with you,

I'm so sad you are all I had,

Can't you hear my brok-en heart call-ing you take me

back. back.

D.O. *ff* *Presto*

IRVING BERLIN'S LATEST BALLAD SUCCESS WE HAVE MUCH TO BE THANKFUL FOR

CHORUS. Valse mod^{to}.

We have eyes to be - hold one an - oth - er,..... We have

voi - ces to say, "I love you,"..... We have ears to hear

love's ten - der sto - ry,..... We have hearts that are fond and

true. We have arms to em - brace one an - oth - er,..... We have

Copyright 1912 by Waterson, Berlin & Snyder Co.
International Copyright Secured.
Copyright Canada 1912 by Waterson, Berlin & Snyder Co.

FOR SALE BY ALL MUSIC DEALERS OR
SENT DIRECT BY THE PUBLISHER ON RECEIPT OF 16¢ IN STAMPS
WATERSON BERLIN AND SNYDER CO.
112 WEST 38TH STREET NEW YORK CITY