

Harida L. Phillips

I WANT TO GO BACK TO MICHIGAN

DOWN ON THE FARM



JOHN FREW



Words and Music by

IRVING BERLIN

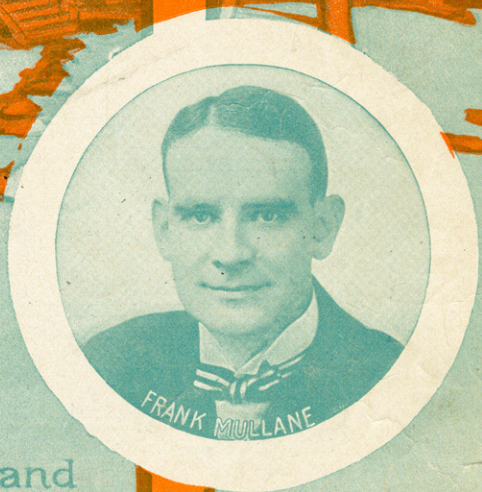
WATERSON BERLIN & SNYDER ©
MUSIC PUBLISHERS
© STRAND THEATRE BUILDING
BROADWAY AT 47TH ST. N.Y.

5



I WANT TO GO BACK TO MICHIGAN

DOWN ON THE FARM



Words and
Music by
IRVING BERLIN

WATERSON-BERLIN & SNYDER ©
MUSIC PUBLISHERS
STRAND THEATRE BUILDING
BROADWAY AT 47TH ST. N.Y.

5

SM 2623

2

I WANT TO GO BACK TO MICHIGAN

(DOWN ON THE FARM)

Words and Music by
Irving Berlin

Moderato

The piano introduction is in 2/4 time, G major, and Moderato. It features a melody in the right hand and a bass line in the left hand. The melody starts with a quarter rest, followed by a quarter note G, a quarter note A, a quarter note B, and a quarter note C. The bass line starts with a quarter note G, a quarter note A, a quarter note B, and a quarter note C. The piece ends with a quarter note G, a quarter note A, a quarter note B, and a quarter note C.

till ready

I was born in Mich-i-gan,
You can keep your cab-ar-ets,

The vocal line begins with a quarter rest, followed by a quarter note G, a quarter note A, a quarter note B, and a quarter note C. The piano accompaniment features a melody in the right hand and a bass line in the left hand. The melody starts with a quarter note G, a quarter note A, a quarter note B, and a quarter note C. The bass line starts with a quarter note G, a quarter note A, a quarter note B, and a quarter note C.

And I wish and wish a-gain, That I was back _____ in the
Where they turn nights in-to days, I'd rath-er be _____ where they

The vocal line continues with a quarter note G, a quarter note A, a quarter note B, and a quarter note C. The piano accompaniment features a melody in the right hand and a bass line in the left hand. The melody starts with a quarter note G, a quarter note A, a quarter note B, and a quarter note C. The bass line starts with a quarter note G, a quarter note A, a quarter note B, and a quarter note C.

Copyright MCMXIV by Waterson, Berlin & Snyder Co.
Copyright Canada MCMXIV by Waterson, Berlin & Snyder Co.
International Copyright Secured.

CHORUS

I want to go back, — I want to go back, — I want to

p - f

go back to the farm, Far a - way from

harm, — With a milk pail on my arm; — I miss the

roost - er, — The one that use - ter Wake me up at four A. M. —

I think your great big ci - ty's ver - y pret - ty,

nev - er - the - less - I want to be there, — I want to see there — A cer - tain

some one full of charm; — That's why I wish a - gain, That

I was in Mich - i - gan, Down on the farm. I want to farm. —

1. 2. D.S.

FROM
THE COLLECTION OF
Gene Blakely

Irving Berlin

The Song Genius
of
The World
says:~

This song surpasses all
my previous efforts.
I can safely say ~ this is
the best song I ever wrote.

"Along Came Ruth"



CHORUS

I was grow - ing ver - y fond of Mol - ly When a -

long came Ruth, a - long came Ruth, I thought an aw - ful lot of

Dol - ly When Ruth came a - long, My head be - gan to "Mer - ry - go - round," I

Copyright 1914 by Waterson, Berlin & Snyder Co., Strand Theatre Bldg. Broadway at 47th St. N.Y.
International Copyright Secured
Copyright Canada 1914 by Waterson, Berlin & Snyder Co.

TRY THIS ON YOUR PIANO

When The Angelus Is Ringing.

Words by JOE YOUNG.

Music by BERT GRANT.

Chorus.

When the an - ge - lus is ring - ing in the bel - fry on the

p-f

hill, And the whip-poorwill is sing - ing

in the night, when all is still, I am wait - ing for the

time when I can come to you and sing loves sweet song.

Copyright MCMXIV by Waterson, Berlin & Snyder Co.
Copyright Canada MCMXIV by Waterson, Berlin & Snyder Co.
International Copyright Secured

FOR SALE BY ALL MUSIC DEALERS OR
SENT DIRECT BY THE PUBLISHER ON RECEIPT OF 16¢ IN STAMPS
WATERSON BERLIN AND SNYDER CO.

112 WEST 38TH STREET, NEW YORK CITY