

A.W. Barbelle

IT'S

# MOULTON ON THE RAINE

WORDS BY  
BERT KALMAR & EDGAR LESLIE

MUSIC BY  
TED SNYDER

The  
LA SALLE  
OPERA HIT

Sung By

EVA FALLON

## IN THE BIG MUSICAL PLAY ONE GIRL IN A MILLION

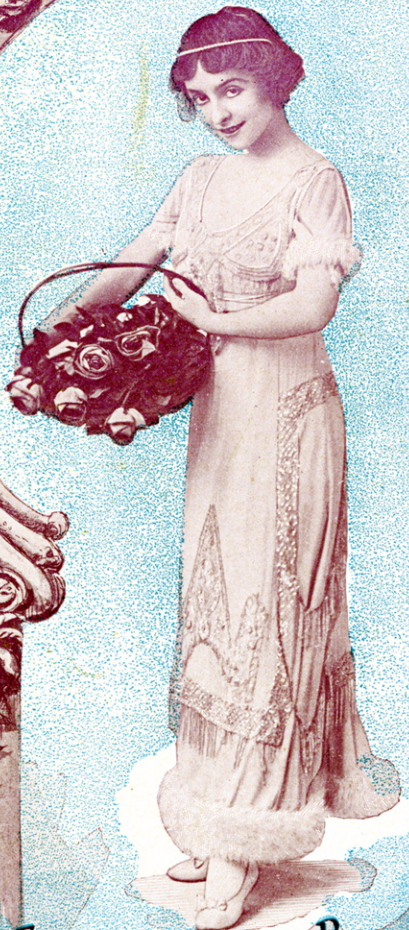
Staged By VIRGIL BENNETT

Book By  
Addison Burkhardt and  
Charles Collins

6

Notes By  
Addison Burkhardt  
and Frieda Hall

WATERSON-BERLIN & SNYDER CO  
MUSIC PUBLISHERS  
STRAND THEATRE BUILDING  
BROADWAY AT 47TH ST. N.Y.



Try this over on your Piano.

# My Bird Of Paradise

(MY HONOLULU GIRL)

By IRVING BERLIN

Moderato

Piano

The piano introduction is in 2/4 time, marked 'Moderato'. It features a melody in the right hand and a supporting bass line in the left hand. The key signature has two flats (B-flat and E-flat). The piece begins with a forte (*f*) dynamic.

Voice

In Hon-o-lu-lu  
In Hon-o-lu-lu

*fz* *Till ready* *p legato*

The first vocal line is in 2/4 time. The piano accompaniment starts with a forte (*fz*) dynamic and includes a section marked 'Till ready' and 'p legato'. The key signature remains two flats.

far a - way — A maid - en who could not be gay —  
by the sea — A maid - en's wait - ing pat - ient - ly —

The second vocal line continues the melody. The piano accompaniment provides harmonic support. The key signature remains two flats.

Copyright MCMXV by Waterson, Berlin & Snyder Co., Strand Theatre B'ld'g. Broadway at. 47th St. N. Y.  
International Copyright Secured

Complete Copies may be had where you bought this

SM 2653

# Moonlight On The Rhine

Words by  
BERT KALMAR and EDGAR LESLIE

Music by  
TED SNYDER

Piano introduction in B-flat major, 4/4 time. The music begins with a forte (*f*) dynamic. The right hand features a melodic line with a trill on the final note, while the left hand provides a harmonic accompaniment. The piece concludes with a fortissimo (*ff*) dynamic and an accent (^) on the final chord.

VOICE

*p* Come, my lieb-chen, Now that you have all the  
Grapes are grow-ing In the vine-yard and the

*Vamp*  
*p*

Vocal line and piano accompaniment for the first verse. The vocal line starts with a piano (*p*) dynamic. The piano accompaniment includes a 'Vamp' section with a repeat sign and a piano (*p*) dynamic. The lyrics are: 'Come, my lieb-chen, Now that you have all the Grapes are grow-ing In the vine-yard and the'.

cows and sheep in, Come a - long with me the night is  
 wine is flow - ing, Hear them sing - ing all a - long the

Vocal line and piano accompaniment for the second verse. The lyrics are: ' cows and sheep in, Come a - long with me the night is wine is flow - ing, Hear them sing - ing all a - long the'.

fine To walk a - long the Rhine.  
Rhine, A song of love di - vine.

We will wan - der To the riv - er bank it's o - ver yon - der  
Ev - 'ry Gret - chen Is a pret - ty pic - ture sweet and fetch - in'

While the moon is shin - ing up a -  
As she gaz - es in her sweet - heart's

bove, I'll tell you of my love.  
eyes, And lis - tens while he sighs.

CHORUS

*p-f*

Dear-ie, my dear-ie, It's moon-light on the Rhine

*p-f*

Detailed description: This system contains the first two lines of the chorus. The vocal line is in a soprano clef with a key signature of two flats and a common time signature. The lyrics are "Dear-ie, my dear-ie, It's moon-light on the Rhine". The piano accompaniment is in a grand staff with treble and bass clefs, featuring a steady harmonic accompaniment. Dynamics include *p-f* (piano-forte) markings.

By the mill where all is still I'd like to kiss you once, Kiss you twice, 'mid the E-del-weis.

Detailed description: This system contains the third and fourth lines of the chorus. The vocal line continues with the lyrics "By the mill where all is still I'd like to kiss you once, Kiss you twice, 'mid the E-del-weis.". The piano accompaniment continues with a similar harmonic texture. Dynamics include *p-f* markings.

Dear-ie, right here we can let our hearts en-twine, Be con-

Detailed description: This system contains the fifth and sixth lines of the chorus. The vocal line continues with the lyrics "Dear-ie, right here we can let our hearts en-twine, Be con-". The piano accompaniment continues with a similar harmonic texture. Dynamics include *p-f* markings.

ten-ed, I've rent-ed a cas-tle on the Rhine. Rhine. *fz*

Detailed description: This system contains the seventh and eighth lines of the chorus. The vocal line continues with the lyrics "ten-ed, I've rent-ed a cas-tle on the Rhine. Rhine.". The piano accompaniment concludes with a final chord. Dynamics include *fz* (forzando) markings. The system ends with a double bar line and repeat signs.



# WHEN I LEAVE THE WORLD BEHIND

IRVING BERLIN'S  
LATEST SUCCESS IT EXCELLS  
ANY OF HIS SUCCESSES

Chorus  
*With feeling*

I'll leave the sun - shine to the flow - ers, I'll leave the  
spring - time to the trees, And to the  
old folks I'll leave the mem - 'ries Of a  
ba - by up - on their knees. I'll leave the

Copyright MCMXXV by Waterson, Berlin & Snyder Co.  
International Copyright Secured.

BARCELLE

For sale by all music dealers or will be sent direct by publishers on receipt of 25¢ in stamps  
**WATERSON, BERLIN & SNYDER CO.**  
STRAND THEATRE BUILDING, BROADWAY AT 47th STREET, NEW YORK.