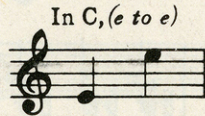


ARE YOU FROM DIXIE

(CAUSE I'M FROM DIXIE TOO)



HENRY A. YOHANAN

Words by
JACK YELLEN

Music by
GEORGE L. COBB

HENRY A. YOHANAN

PUBLISHED IN THE FOLLOWING ARRANGEMENTS

Vocal Solo, C60	4 Part Mixed (SATB)16
2 Part Treble (SA or TB)18	Vocal Orchestration, C	1.25
4 Part Male (TTBB)15	Dance Orchestration (One Step)	1.25
Band (Quickstep Size)	1.50		

WHEN PERFORMING THIS COMPOSITION KINDLY GIVE ALL
PROGRAM CREDITS TO

M. WITMARK & SONS
NEW YORK

PRINTED IN U.S.A.

SM2794

Are You From Dixie?

('Cause I'm From Dixie Too)

Words by
JACK YELLEN

Music by
GEORGE L. COBB

Brightly

VOICE

PIANO

* C

Hel-lo there stran-
It was a - way -

- ger! how do you do? — There's some-thing I'd like to
— back in eight-y nine, — I crossed the old — Ma - son

F#dim G7

say to you. — Don't be sur - prised, — You're re - cog - nized! —
Dix-on line. — Gee! but I've yearned, — Longed to re - turn —

*Diagrams for Guitar, Symbols for Ukulele and Banjo

15119-4

Copyright MCMXV by M. Witmark & Sons

Copyright Renewed

Publisher member of A. S. C. A. P.

International Copyright Secured. Made in U. S. A.

ALL RIGHTS RESERVED INCLUDING PUBLIC PERFORMANCE FOR PROFIT

The making of any unauthorized adaptation, arrangement or copy of this publication, or any part thereof, is an infringement of copyright and subjects the infringer to severe penalties under the Copyright Law.

D 7

G 7

I'm no de - tec - tive but I've just sur - mised, —
To all the good — old pals I left be - hind. —

C

You're from the place — where I long to be, — Your smil - ing face —
My home is way — down in A - la - bam' — On a plan - ta -

Cm 6

G

— seems to say to me: — You're from my own land,
- tion near Bir - ming - ham, — And one thing's cer - tain,

D 7

Am 7

Cm 6

D 7

G 7

C# dim

G 7

My sun - ny home - land, Tell me can it be? —
I'm sure - ly flir - tin' With those south - bound trains: —

15119 - 4

"Tennessee Ernie" Ford ALBUM OF FAVORITE SONGS
Includes AM I BLUE • LAUGH! CLOWN! LAUGH! • WHEN YOUR LOVER HAS GONE • APRIL SHOWERS • AS TIME GOES BY
IF I COULD BE WITH YOU • GET HAPPY • I FOUND A MILLION DOLLAR BABY • AVALON • BREEZIN' ALONG WITH THE
BREEZE • FINE AND DANDY • YOU MUST HAVE BEEN A BEAUTIFUL BABY • Price \$1.00 in U.S.A. • REMICK MUSIC CORP.

REFRAIN



Are you from Dix - ie? I said from Dix - ie!



Where the fields of cot - ton beck - on to me I'm glad to



see you, Tell me how be you And the friends I'm



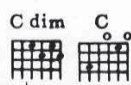
long - ing to see. If you're from A - la - ba - ma,

Nat "King" Cole SONG ALBUM OF RECORDED HITS

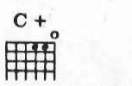
Includes BLUE GARDENIA • BODY AND SOUL • GO TO SLEEP MY SLEEPY HEAD • I KNOW THAT YOU KNOW • I'LL STRING ALONG WITH YOU • IT'S ONLY A PAPER MOON • LOVE NEST • RETURN TO PARADISE • SWEET GEORGIA BROWN • THREE LITTLE WORDS • TOO MARVELOUS FOR WORDS • WHAT IS THIS THING CALLED LOVE? • Price \$1.00 in U.S.A. • REMICK MUSIC CORP.



Ten - nes - see or Ca - ro - line An - y place be -



low the Ma - son Dix - on line — Then you're from Dix - ie,



— Hur - ray for Dix - ie! — 'Cause I'm from



Dix - ie tool — Are you from tool —

Selected Songs of Dixieland

Suitable for Minstrel Shows and All Kinds of Entertainment

PRICE 60¢ EACH

HENRY A. YOHANAN

M. Witmark & Sons

MA BLUSHIN' ROSIE
BAKE DAT CHICKEN PIE
CAN'T YO' HEAH ME CALLIN' CAROLINE
ARE YOU FROM DIXIE
HERE COMES DINAH, BELLE OF THE BALL
KENTUCKY BLUES

THERE'S A DOWN IN DIXIE FEELIN' HANGIN'
ROUND ME
I'M GOIN' SOUTH
I'M SITTIN' PRETTY IN A PRETTY LITTLE CITY
VAMPING SAL, THE SHEBA OF GEORGIA
MAMMY'S LITTLE KINKY HEADED BOY

Remick Music Corp.

ON MOBILE BAY
CIRCUS DAY IN DIXIE
MAMMY'S LITTLE COAL BLACK ROSE
THEY MADE IT TWICE AS NICE AS PARADISE
(AND THEY CALLED IT DIXIELAND)
BEAUTIFUL ANNABELL LEE
CAROLINA IN THE MORNING
DIXIE HIGHWAY
DON'T LEAVE ME MAMMY
DOWN OLD VIRGINIA WAY
SILVER SWANEE
FOLLOW THE SWALLOW
KENTUCKY'S WAY OF SAYIN'
GOOD MORNIN'

LUCKY KENTUCKY
VIRGINIA'S CALLING ME
BAM BAM BAMY SHORE
I'M GONNA CHARLESTON BACK TO
CHARLESTON
SWANEE BUTTERFLY
SWEET GEORGIA BROWN
WHERE THE LAZY DAISIES GROW
BYE BYE BLACKBIRD
HELLO BLUEBIRD
TAMIAMI TRAIL
CRYING FOR THE CAROLINES
LISTEN TO THAT DIXIE BAND
ALABAMA JUBILEE

Harms, Inc.

OH, MISS HANNAH
ANNABELL LEE
DOWN IN NASHVILLE, TENNESSEE

SWANEE

LOUISIANA HAYRIDE
CHARLESTON

LOUISIAN'

Music Publishers Holding Corporation

HARMS, INC. • REMICK MUSIC CORP. • M. WITMARK & SONS

619 WEST 54th ST., NEW YORK 19, N. Y.