

I Love A Piano

M-G-M presents

IRVING BERLIN'S

EASTER PARADE

starring

JUDY

FRED

GARLAND * ASTAIRE

PETER LAWFORD

ANN MILLER

COLOR BY **TECHNICOLOR**

Screen Play by
RODNEY SHELDON, FRANCES GOODRICH and ALBERT HACKETT

Original Story by
FRANCES GOODRICH and ALBERT HACKETT

Musical Numbers Directed by **ROBERT ALTON**

Directed by **CHARLES WALTERS**

Produced by **ARTHUR FREED**

A METRO-GOLDWYN-MAYER PICTURE



Lyrics and Music by
IRVING BERLIN

PRICE ^{60¢} 50¢



IRVING BERLIN
Music Corporation

1650 BROADWAY, NEW YORK 19, N. Y.

Featured in Irving Berlin's "EASTER PARADE" an M. G. M. production

2

I Love A Piano

SM 2865

By IRVING BERLIN

Allegro moderato

Piano

f *fz*

VOICE

As a child, I went wild, when a
When a green Tet-ra-zine starts to

Till Ready

p *p*

band played; How I ran to the man, when his hand swayed. Clar-i-
war-ble, I grow cold as 'an old piece of mar-ble; I al-

b

nets were my pets, and a slide trom-bone I thought was sim-ply di-vine.— But to-
lude to the crude lit-tle par-ty sing-er, who don't know when to pause.— At her

Copyright 1915 IRVING BERLIN

Copyright Renewed

International Copyright Secured.

Made in U. S. A.

All Rights Reserved.



day, when they play, I could hiss them; Ev-'ry bar is a jar to my sys-tem; But best I de-test the so-pran-o, But I run to the one at the pian-o, I

there's one mu-si-cal in - strument, that I call mine. _____
al - ways love the ac-comp-ni-ment and that's be - cause. _____

CHORUS

I love a pian-o, _____ I love a pian-o, _____ I love to

p-f

hear some-bod-y play _____ up-on a pian-o, _____ A grand pi -

an-o, ——— It simp-ly car-ries me a - way. I know a

fine way to treat a Stein - way, I love to run my fin-gers

o'er the keys, the i - vor-ies, And with the ped-al ——— I love to

med-die. ——— When Pa - da - rew - ski comes this way, ——— I'm so de -

light-ed, _____ If I'm in - vi - ted _____ To hear that long haired gen-ius

play. _____ So you can keep your fid - die and your bow, Give me a

P - I - A - N - O, oh, oh, I love to stop right _____ be-side an

Up-right, Or a high toned Ba-by Grand. I love a Grand. _____

D. S.

Standard Songs from Irving Berlin's "EASTER PARADE"

M.G.M.'s Technicolor Production

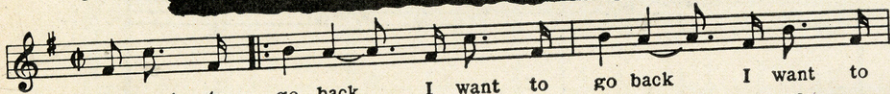
EASTER PARADE



In your East - er bon - net With all the frills up -

Copyright 1928 IRVING BERLIN

I WANT TO GO BACK TO MICHIGAN



I want to go back, I want to go back I want to

Copyright 1914 Irving Berlin

GIRL ON THE MAGAZINE COVER



The girl I love, is on a mag-a-zine cov - er.

Copyright 1915 IRVING BERLIN

WHEN THE MIDNIGHT CHOO-CHOO LEAVES FOR ALABAM'



When the mid-night choo-choo leaves for Al - a - bam' I'll be right

Copyright 1922 Irving Berlin

EVERYBODY'S DOIN' IT NOW



Ev - 'ry - bo - dy's do - in' it, Do - in' it, do - in' it,

Copyright 1911 Irving Berlin

SNOOKY OOKUMS



All day long he calls her Snook-y oo-kums, Snook-y oo-kums,

Copyright 1911 Irving Berlin

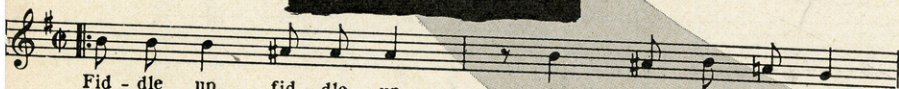
SHAKING THE BLUES AWAY



Shak-ing the blues a - way — Unhap - py news a - way —

Copyright 1927 IRVING BERLIN

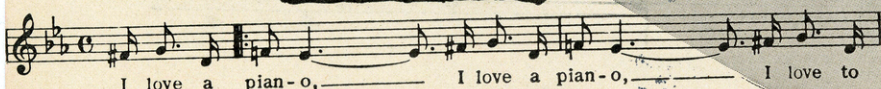
RAGTIME VIOLIN



Fid - dle up, fid - dle up on your vi - o - lin,

Copyright 1911 Irving Berlin

I LOVE A PIANO



I love a pian-o, I love a pian-o, I love to

Copyright 1915 IRVING BERLIN

BEAUTIFUL FACES



Beau-ti-ful fac - es need beau-ti-ful clothes, Sat-ins and

IRVING BERLIN
Music Corporation
1650 BROADWAY, NEW YORK 19, N. Y.