



The Olde Time Christmas Music

Piano Solo

BEAUMONT, P., Chanson de Noel (S1442).....	.35
BEHR, FRANZ, Christmas Time (S286).....	.20
HANISCH, M., Op. 84, Christmas Bells, Nocturne (S 1952).....	40
HILLER, P., Op. 66, No. 5. 'Round the Christmas Tree (S1341).....	.25
HOWARD, J. T., The First Nowell (P 1422).....	.50
KRUG, D., Silent Night, Holy Night (S 1563).....	.35
SCHULTZE, M., Christmas Songs, Fantasia (S 1816)	.35
SCHUMANN, R., Knight Rupert (S 786).....	.25
TOBANI, THEO. M., Around the Christmas Tree (A Yule-Tide Selection) (P 650).....	.75

Vocal

ADAM, A., Christmas Song (Cantique de Noël) High (S 5398) Low (S 5399).....	.50
FOLKSONG, O Faithful Pine (O Tannenbaum) Medium (S 5364).....	.25
GRÜBER, F., Silent Night, Holy Night. Medium (S 5218).....	.25
KRIENS, C., Behold I bring good tidings, High (V 349) Low (V 350).....	.50

Violin and Piano

BEAUMONT, P., Chanson de Noel (B 98).....	.60
KRON, L., O Faithful Pine (B 640).....	.40
— — The same, 2 Violins and Piano.....	.50
— — Silent Night, Holy Night (S 3780).....	.40
— — The same, 2 Violins and Piano.....	.50
— — O Sanctissima (S 3602).....	.40
— — The same, 2 Violins and Piano.....	.50
SAENGER, G., Adeste Fideles (S 3752).....	.40
— — The same, 2 Violins and Piano.....	.60
SCHULTZE, M., Christmas Songs, Fantasia (B 1008)	.50
WOHLFAHRT, F., Easy Fantasia on Christmas Songs (S 3557).....	.50
— — The same, 2 Violins and Piano (S 4002)	.60

Christmas Joys

34 Favorite Christmas Songs, arranged and edited by Edward S. Breck. Piano Solo (with words).....	.50
Separate Solo and Duet parts published for C, Bb, Eb and Bass Instruments. Each Set (Solo and Duet).....	.25

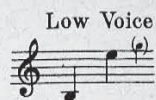
CARL FISCHER, INC.

COOPER SQUARE, NEW YORK 3
Boston • Chicago • Dallas • Los Angeles



426 SO. BROADWAY
LOS ANGELES 13, CALIF.

Christmas Song Cantique de Noël



ADOLPHE ADAM

Andante maestoso *p*

Voice

O ho — ly night — the stars are bright-ly
Mi-nuit, — Chré-tien, — c'est l'heu - re so - lem-

Piano

mf *p*

ped. * *ped.* * *ped.* * *ped.* *

shin - ing, It is the night of the dear Sav - iours birth.
nel - le Où l'hom - me Dieu de - scen-dit jus - qu'à nous,

ped. * *ped.* * *ped.* * *ped.* * *ped.* *

Long lay the world — in sin and er - ror pin - ing Till he ap -
Pour ef - fa - cer — la ta - che ori - gi - nel - le Et de son
cresc.

ped. * *ped.* * *ped.* * *ped.* * *ped.* *

Copyright MCMXVI by Carl Fischer, New York

pear'd and the soul felt its worth. A thrill of hope the
pe - re ar rê-ter le cour-roux. Le mon-de en - tier tres -

pp

dim.

pp

ped. * *ped.* * *ped.* *

wea - ry world re-joic - es, For yon - der breaks a new and glo - rious morn;
cail - le d'è spé - ran - ce a cet - te nuit qui lui don - ne un sau - veur

f
 Fall on your knees! Oh hear the an - gel
Peu - ple à ge - nous at - tends ta dé - li -

f

ped. * *ped.* * *ped.* *

voic - es! O night di - vine! O
vran - ce. No - èl No - èl voi -

dim.

dim.

ped. * *ped.* * *ped.* * *ped.* * *ped.* *

cresc.

night when Christ was born, O night di -
 ci le Ré - demp - teur, No él No -

ff. *rall.* *a tempo*

vine! O night, O night di - vine!
 él voi - ci le Ré - demp - teur.

ff. *rall.* *a tempo* *marcato*

ff. *rall.* *a tempo* *marcato*

ff. *rall.* *a tempo* *marcato*

p

Led by the light of faith serene - ly
 De no - tre foi que la lumière ar -

p

beam - ing, With glow - ing hearts by His cra - dle we stand.
 den - te nous gui - de tous au ber - ceau de l'en - fant

Ped. * *Ped.* * *Ped.* * *Ped.* * *Ped.* *

So led by light of a star sweet - ly gleam - ing, Here came the
 comme au - tre - fois une é - toi - le bril - lan - te y con - dui -
 erese.

Ped. * *Ped.* * *Ped.* * *Ped.* * *Ped.* *

wise - men from the O - rient land. The King of King lay
 sit les chefs de l'ori - ent. Le Roi des Rois naît

pp
dim.

Ped. * *Ped.* * *Ped.* *

thus in low - ly man - ger, In all our tri - als born to be our friend.
 dans une hum - ble cré - che puis - sans du jour fiers de vo - tre gran - deur,

Ped. * *Ped.* * *Ped.* *

f

He knows our need, to our weak - ness no
à votre or - gueil c'est de là qu'un Dieu

Ad. * *Ad.* * *Ad.* *

stran - ger; Be - hold your King! be -
pré - che; cour - bez vos fronts de -

dim.

Ad. * *Ad.* * *Ad.* * *Ad.* * *Ad.* *

fore the Low - ly bend, Be -
vant le Ré - demp - teur, cour -

cresc.

Ad. * *Ad.* * *V.* *V.*

hold your King! your King! be - fore Him
bez vos fronts de - vant le Ré - demp

ff *rall.*

19944-8 *Ad.* * *Ad.* * *Ad.* * *Ad.* * *Ad.* * *Ad.* * *Ad.* *

a tempo

bend.
teur.

marcato

a tempo

♯*Re* * ♯*Re* * ♯*Re* * ♯*Re* * ♯*Re* * ♯*Re* * ♯*Re* *

p

Tru - ly He
Le Ré - demp -

p

♯*Re* * ♯*Re* * ♯*Re* * ♯*Re* *

taught us to love one an - oth - er, His law is love and His gos - pel is
teur a bri-sé toute en - tra - ve, La terre est li - bre et le ciel est ou -

♯*Re* * ♯*Re* * ♯*Re* * ♯*Re* * ♯*Re* *

peace.
vert.

Chains shall He break, for the slave is our
Il voit un fré - re où n'é-tait qu'un es -

♯*Re* * ♯*Re* * ♯*Re* *

broth - er, And in His name all op-pres-sion shall cease. Sweet
cla - ve L'a mour u - nit ceux qu'enchaî - nait le fer. Qui

pp

cresc. *dim.*

pp

hymns of joy in grate-ful cho-rus raise we, Let all with-in us
lui di - ra no - tre re-con-naissan - ce? c'est pour nous tous qu'il

pp

praise His ho - ly name! Christ is the Lord,
nait, qu'il souffre et meurt. Peu - ple de - bout,

f

then ev - er, ev - er praise we, His pow'r and
chan - te ta dé - li - vran - ce, No - ël, No -

glo - ry ev - er - more pro - claim, His
él, chan - tons le Ré - demp - teur, No -

cresc.

cresc.

*And. * And. * And. * And. **

pow'r and glo - ry ev - er - more pro -
él, No - él chan - tons le Ré - demp -

ff *tr. rall.*

rall.

*And. * And. * And. * And. * And. * And. **

a tempo

claim, *marcato*
 teur.

a tempo

*And. * And. * And. * And. * And. * And. **

*And. * And. **

*And. **

FRANK LA FORGE



Sacred Songs

With Piano or Organ

SERIES I

And There Were Shepherds Abiding in the Field50
High Voice (V1367)	
Low Voice (V1368)	
Bless the Lord50
High Voice (V1180)	
Low Voice (V1181)	
The Bread of Heaven (Communion)60
High Voice (V1468)	
Low Voice (V1469)	
Come Near, Ye Nations60
High Voice (V1828)	
Low Voice (V1829)	
Come unto Me50
Medium Voice (V1529)	
God Is Our Refuge50
High Voice (V1916)	
Medium Voice (V1915)	
The Greatest in the Kingdom of Heaven ..	.60
High Voice (V1464)	
Low Voice (V1465)	

V55

CARL FISCHER, INC.

COOPER SQUARE, NEW YORK 3

Boston • Chicago • Dallas • Los Angeles

