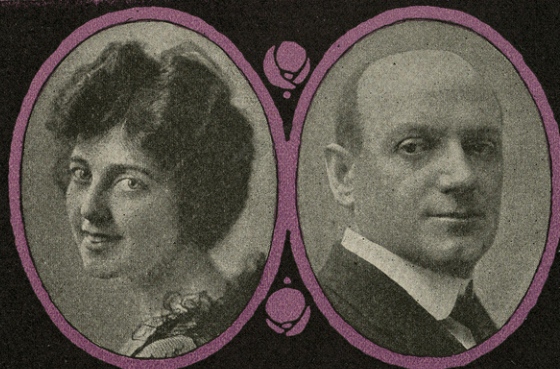


# SMILE A LITTLE, SMILE FOR ME



CHARLES FROHMAN-ING  
PRESENTS  
JULIA SANDERSON  
AND  
JOSEPH CAWTHORNE

## IN RAMBLER ROSE

BOOK & LYRICS BY  
HARRY B. SMITH  
MUSIC BY  
VICTOR JACOBI

### VOCAL

One Look, One Word . . . . .	.60
Rambler Rose . . . . .	.60
Dream, Dream . . . . .	.60
Cinderella . . . . .	.60
Gypsy Song . . . . .	.60
Smile a Little, Smile for me . . .	.60
When you bid your sweetheart good-bye . . . . .	.60
Land of the Midnight Sun . . . .	.60
INSTRUMENTAL	
Selection . . . . .	1.00

BURTON PRICE



T. B. HARMS  
AND  
FRANCIS, DAY & HUNTER  
NEW YORK

SM 3624

# Smile A Little, Smile For Me.

3

Words by  
HARRY B. SMITH.

Music by  
VICTOR JACOBI.

Gavotte moderato grazioso.

Piano.

The piano introduction is in 3/4 time, marked 'mf'. It features a treble clef with a key signature of one sharp (F#) and a bass clef. The melody in the treble clef consists of eighth and quarter notes, while the bass clef provides a simple harmonic accompaniment with chords and single notes.

Tho' your plans I've quite un-set - tled, Do not feel pro-voked or net - tled  
Tho' you're dis - ap-point - ed keen - ly, Try to take it quite se-rene - ly

*p*

The first system of the song features a vocal line in the treble clef and piano accompaniment in the bass clef. The lyrics are written below the vocal line. The piano part is marked 'p' and consists of chords and single notes.

What can you ex - pect when my young life is wrecked.  
Now's the time I think that I should take to drink.

The second system continues the vocal line and piano accompaniment. The lyrics are written below the vocal line. The piano part continues with chords and single notes.

Do not be de-pressed and tear - ful Try to look a bit more cheer-ful,  
Soon you'll find that your de - vo - tion Mere-ly was a pass - ing no - tion

The third system concludes the vocal line and piano accompaniment. The lyrics are written below the vocal line. The piano part includes a triplet of eighth notes in the bass clef, marked with a '3' above it.

Tell me what to do, I'll take a hint from you.  
What's a chap to do When all the world looks blue.

Refrain.

Smile, smile Just a lit - tle smile

*p-f*

That's the least that you can do, dear. I'll smile

in a lit - tle while When I've found a cer - tain way of

win - ning you, dear. Try, try Bet - ter smile than sigh

{ There are good fish in the sea It has  
Sil - ver lined the clouds may be A - ny

nev - er been my wish to get mar - ried to a fish } Won't you  
smile that I'd be - gin would turn out a ghast - ly grin }

Smile a lit - tle bit for me, me.