

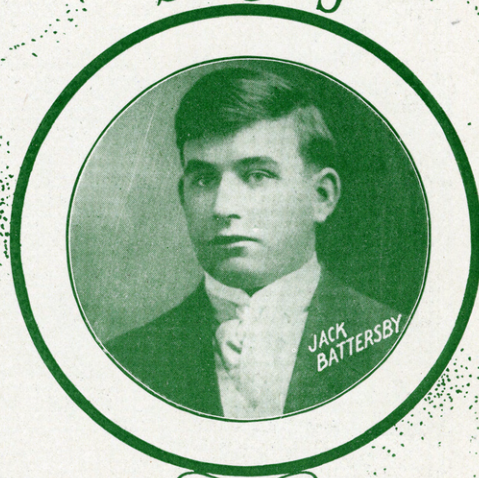
Belinda

(Open Up Your Window)

Words and Music by
Chas. R. McCarron
and
Carey Morgan



Sung by



Introduced in
**GUS HILL'S
MINSTRELS**



STARMER

Jos. W. Stern & Co.
102-104 W. 38th St. New York.

50¢

SM 3752

Belinda

Open Up Your Window

Words and Music by
CHAS. R. Mc CARRON
and CAREY MORGAN
VOICE

Moderato

The piano introduction consists of two staves. The right hand plays a melodic line with eighth and sixteenth notes, while the left hand provides a harmonic accompaniment with chords and moving bass lines. The tempo is marked 'Moderato'.

Till ready

Be-
Be-

The first system of the song features the vocal melody on a single staff and the piano accompaniment on two staves. The lyrics are: lin-da, I'm here ev-ry night and stand out-side and watch your light a-shin-ing — And I am lin-da, Please be sweet to me, Like Ju-li-ette you ought to be, Be-lin-da — Up in your

The second system continues the vocal melody and piano accompaniment. The lyrics are: pin-ing; And when you draw the shade down low, And fuss-a-round an hour or so, Your shad-ow-graph I win-dah, And I should be like Ro-me-o, And make mah-self to ho-me-o, And climb your bal-co-

The third system continues the vocal melody and piano accompaniment. The lyrics are: see; When you hear that tap-pin' on yo' win-dow sill, 'Taint no rob-in red breast or a ny; I have got a wed-ding ring, and li-cense too, I have got a lit-tle bung-a-

The fourth system concludes the vocal melody and piano accompaniment. The lyrics are: whip-por-will, 'Taint no old wood-peck-er, Peck-in' on-a tree, It's me jes' me-ee. low for two, Can't yo'hear me call-ing, No one else will do, But you jes' you-oo.

Copyright MCMXVIII by Jos W Stern & Co. New York
British Copyright Secured

English Theatre and Music Hall rights strictly reserved

Depositado conforme con las Leyes de los Países de Sud y Cental America y Mexico

Depositado en el año MCMXVIII por Jos. W. Stern y Cia, Proprietarios Nueva York

CHORUS

Oh Be - lin - da, Op - er up your win - dah -

I see your shad - ow just as 'sure as you're 'bawn,' I'll take you out this eve-ning, if you've

got noth - in' on Oh Be - lin - da, When your black shad - ow I

see My poor heart just like a wild-cat moans, Peo-ple pass-ing hous-es, they should

nev-er throw stones, But I'm goin' tuh, Be - lin - da, If you don't throw up your win-dah for

me. me.

GENUINE MOANING "BLUES"

BY AMERICA'S BEST WRITERS

The ENTIRE COUNTRY is beginning to APPRECIATE that there is REAL MUSIC in a GENUINE "BLUES" MELODY

Ask to hear "ANTI LOAFIN' BLUES" "GRAVEYARD BLUES"

HAS ANYBODY SEEN MY CORINNE?

BY LUKIE JOHNSON
The New Chicago Shimme of the Upper Ten

CHORUS

Has an-y - bod - y seen my Co - rinne? Oh, she's a dream, (She's my Ha-by Doll)

Just like a Vampire, she set my heart on fire

I re-gret the day, the day that I was born,

Copyright MCMXVIII by Roger Graham.

GENUINE "BLUES" SONGS are RARE INSPIRATIONS that come only to GIFTED NEGRO COMPOSERS

Ask to hear "WANDERING BLUES" "ARMY BLUES"

THOSE DRAFTIN' BLUES

BY MACEO PINKARD
Sung from Coast to Coast by All Coon Shouters

CHORUS (very slow)
(Observe grace notes with moaning effect)

When Un - cle Sam, calls out your man, Don't

sigh. And cry, be-cause you know he cer-tin-ly can't re - fuse

hold - him back, might make him "slack" Just say, you've

dress - in black can't bring him back

Copyright, MCMXVIII by Griffin Music House Chicago, Ill.
Sole Selling Agts. JOS W STERN & CO., New York.

TISHOMINGO BLUES

BY SPENCER WILLIAMS
This One Has The Real Moan In Both Words and Music

CHORUS

I'm going to ish o-min-go, be-cause I'm sad to day,

I wish to lin-ger, way down old Dix-ie way.

Oh my wea-ry heart cries out in pain, Oh how I wish that I was back a-gain. With a race,

in a place, Where they make you wel-come all the time. Way down in Mis-si-sip-pi.

Copyright MCMXVII by Jos. W. Stern & Co., New York.

COMPLETE COPIES ON SALE AT ALL MUSIC DEALERS OR SENT DIRECT BY THE PUBLISHERS AT 15¢ A COPY POSTPAID
JOS. W. STERN & CO., 102-104 W. 38TH ST., NEW YORK CITY