

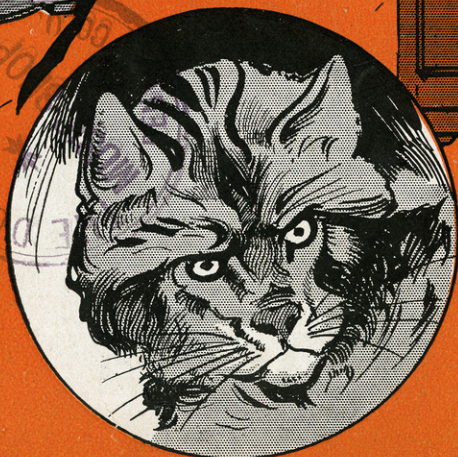
THAT'S WHAT MAKES A WILD CAT WILD

WORDS BY
GEORGE A. NORTON

MUSIC BY
THERON C. BENNETT



NEW YORK
350 WEST 38TH ST.
SAN FRANCISCO,
SHERMAN CLAY.



PUBLISHED BY
THERON C. BENNETT
DENVER, COLO
"THE DUTCH MILL"

Eppes

5

SM 4007.

That's What Makes A Wild Cat Wild.

Words by
GEO. A. NORTON.

Music by
THERON C. BENNETT.

Moderato.

Piano. *f*

Ten-nes-see - ought to be, - Dear to the lov - ers of
 Gee It's fine - Love o' mine, - Lis - ten and hear how that

har - mo - ny, - Mem - phis town, where they found Those "or - ig - i - nal" blues. Mem - phis
 mu - sic whines, Makes me sigh, want to die Fo' my lov - a - ble child. Hon - ey

Blues. - - - - - Wo - men mild, all go wild, Cra - zy to "Jazz" in the
 Child. - - - - - Boys and girls, girls and boys, All go - in' "daf - fy" 'bout

lat - est style, Bob cats cry, roost - in' high, you can hear 'em a mile - - - - - Gone wild. - - -
 "Jaz - zy" noise, Gee! It's blue but it's true, that it's run - nin' folks wild - - - - - Plum wild. - - -

rall.

Chorus

Hear that Sax - o - phone hum, Oh! - Lis - ten to the traps and drums!

p-f

Roos - ter call and Ba - by squall is right in tune, - With the

fid - dles "ob - li - ga - to" to the deep Bass - oon. Trom - bone flat - on his back, A -

moan - ing like a naugh - ty child It's the Raz - za Paz - za - za of a

real "Jazz" band, That's what makes a wild cat wild. wild.

1 2

TRY THIS OVER ON YOUR PIANO
 Somehow I Can't Forget You.

Words by
 GEORGE SPRINGER.

MORE'S MUSIC EXCHANGE
 3151 HIGH DENVER, COLO.

Music By
 GEO. A. NORTON.

Waltz Moderato.

f

Musical notation for the piano introduction, featuring a treble and bass clef with a 3/4 time signature. The music is marked with a forte (f) dynamic.

The Rose is a flow - er blush - ing rare, That lives but a fleet - ing
 The quar - rel we had was all my own, And ev - er shall I re -

p

Musical notation for the first line of the song, including a vocal line and piano accompaniment. The piano part is marked with a piano (p) dynamic.

day; The fra - grant Li - ly so white and fair, Soon
 gret. My heart is pi - ning for you a - lone, The

Musical notation for the second line of the song, including a vocal line and piano accompaniment.

with - ers and fades a - way The flow - ers of Love may
 one love I can't for - get The dreams that I dreamed can

Musical notation for the third line of the song, including a vocal line and piano accompaniment.

Copyright MCMXVII by Theron C. Bennett.
 International Copyright Secured.

FOR SALE BY ALL DEALERS!