



# YANKEE DOODLE'S COME TO TOWN

*Geo.*  
*M.* **Cohan's**

LATEST MUSICAL PLAY

# BY THE PIANKEE PRINCE



MUSICAL NUMBERS

- Showing the Yankees London Town . . . 60c
- Villains in the Play . . . . . 60c
- Come on Down Town . . . . . 60c
- I'm Going to Marry a Nobleman . 60c
- Yankee Doodle's Come to Town . 60c
- Soldiers of the King . . . . . 60c
- I'm Awfully Strong for You . . 60c
- I Say Flo . . . . . 60c
- The A B C's of the U. S. A. . . 60c
- M-O-N-E-Y . . . . . 60c
- Tommy Atkins You're All Right . 60c
- A Song of the King . . . . . 60c
- From the Land of Dreams . . . 60c
- Think It Over Carefully . . . . 60c
- Rag Babe . . . . . 60c

INSTRUMENTAL

- March and Two Step . . . . . 60c
- Waltzes . . . . . 60c



**COHAN & HARRIS**  
PUBLISHING Co.  
115 WEST 42<sup>ND</sup> ST  
NEW YORK

PRICE 60 CENTS

# TRY THESE--SEE HOW YOU LIKE THEM

## LOVE DAYS.

Words by  
WM. JEROME

Music by  
JEAN SCHWARTZ.

CHORUS.

Love days, love days days that we fond-ly re-  
call June days spoon days sweet-est and  
dear-est of all— Just as hap-py as two lit-tle birds in a nest  
Coo-ing and put-ting true love to a test When I carved on the tree you're the

Copyright MCMVIII by COHAN & HARRIS Publishing Co. New York.  
International Copyright Secured.

The rights to use either the words or melody of this song, for any mechanical device, is strictly prohibited.

## GOOD-BYE MR. RAGTIME.

Words by  
WM. JEROME.

Music by  
JEAN SCHWARTZ.

CHORUS.

Good Bye a Mis-ter Rag - time, Fare-well Bom-ba - shaw  
Say your lit-tle Day, Day, Day, — On your way.  
Sad but true, Ski - doo, Ski - doo, — Go way back and sit down, Since that

Copyright MCMVIII by COHAN & HARRIS Publishing Co. New York.  
International Copyright Secured.

The rights to use either the words or melody of this song, for any mechanical device, is strictly prohibited.

## "MC GINNIS."

Words by  
WM. JEROME.

Music by  
JEAN SCHWARTZ.

CHORUS.

Gin - nis, Mc Gin - nis Are you wid - us - or a - gin - us You'll  
have no chance to win us if your plat - form is - n't sound and if you  
skin us Mc Gin - nis Sure your name it will be Den - is And we'll  
bur - y you Mc Gin - nis when E - lec - tion Day comes round. Mc round.

Copyright MCMVIII by COHAN & HARRIS Publishing Co. New York.  
International Copyright Secured.

The rights to use either the words or melody of this song, for any mechanical device, is strictly prohibited.

## SANDY O'.

Words by  
WM. JEROME.

Music by  
JEAN SCHWARTZ.

CHORUS.

San - dy San - dy my sweet San - dy O  
My heart keeps bump - in' so Hase - some bran - dy han - dy San - dy  
Kiss me San - dy lad - die don't be slow A  
lit - tle lov - ing comes in han - dy My sweet San - dy O. O.

Copyright MCMVIII by COHAN & HARRIS Publishing Co. New York.  
International Copyright Secured.

The rights to use either the words or melody of this song, for any mechanical device, is strictly prohibited.

SM 4085

NOTICE! *Public Performance of this song strictly prohibited.*

## YANKEE DOODLE'S COME TO TOWN.

Arranged by  
CHAS. J. GEBEST.

by GEO. M. COHAN.

Piano introduction in 2/4 time, key of D major. The music features a lively melody in the right hand and a rhythmic accompaniment in the left hand. The dynamic marking is *ff* (fortissimo).

Voice.

Gath-er ev - 'ry Yan-kee doo-dle If you're broke or got the boo-dle

First system of vocal and piano accompaniment. The vocal line is in the treble clef, and the piano accompaniment is in the bass clef. The dynamic marking is *p* (piano).

Lets show Mister John-ny Bull that we're the pro-per can - dy Lets have one big

Second system of vocal and piano accompaniment. The vocal line is in the treble clef, and the piano accompaniment is in the bass clef.

cel - e - bra - tion Just in hon - or of the na - tion. Lets start up a wild hur-rah for

Third system of vocal and piano accompaniment. The vocal line is in the treble clef, and the piano accompaniment is in the bass clef.

Copyright MCMVIII by COHAN & HARRIS Publishing Co. New York.  
International Copyright Secured.

The rights to use either the words or melody of this song, for any mechanical devices, is strictly prohibited.

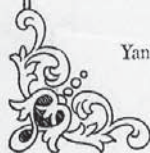


Yankee doodle dan - dy Let's sing a rag - time mel - o - dy With all our

(CHO)  
pa - tri - ot - ic might right when you hear the bells go ting a

ling there'll be a hot time in London to - night Tramp tramp tramp the boys are

SOLO (CHO)  
march - ing Way down South in the land of Cot - ton Give my re - gards to





SOLO

Broad - way      Lets have them know that Yankee doodle came to town

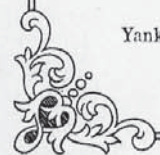
CHORUS.

Come all you Yan - kees gath-er a - round      Let's make a New York

*pf*

of Lon - don town      Let's dance in Jig time      Let's have a big time

Let's do the town up brown      Let's hire a brass band



Strike up a rag Three cheers for Broad-way Let's wave a flag

My coun - try 'tis of thee Stand up and

sing with me Let's make a true noise Red, white and blue noise

Let's let them know that Yan-kee doodle come to town. town.

# INSTRUMENTAL HITS BY GEO. M. COHAN

## 'THE YANKEE PRINCE.'

March

Arranged by  
CHAS. J. GEBEST.

by GEO. M. COHAN.



Copyright MCMVIII by COHAN & HARRIS Publishing Co. 115 W. 42nd St. New York.  
International Copyright Secured.

## GEO. M. COHAN'S

LATEST MARCH AND TWO-STEP.

WORTHY SUCCESSOR

TO

## POPULARITY

# THE WALTZ OF WALTZES

WE CHEERFULLY RECOMMEND THIS  
WALTZ TO ALL MUSIC LOVERS.

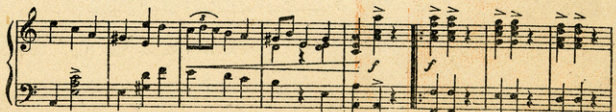
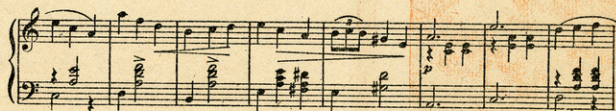
IT IS GEO. M. COHAN'S BEST  
EFFORT.

BE SURE AND TRY IT ON YOUR  
PIANO.

## "THE YANKEE PRINCE."

WALTZES.

by GEO. M. COHAN &  
CHAS. J. GEBEST



Copyright MCMVIII by COHAN & HARRIS Publishing Co. 115 W. 42nd St. New York.  
International Copyright Secured.

55/2



**COHAN & HARRIS  
PRODUCTIONS**

- GEO. M. COHAN IN  
"THE YANKEE PRINCE"
- VICTOR MOORE IN  
"THE TALK OF NEW YORK"
- GEORGE EVANS <sup>AND HIS</sup>  
"HONEY BOY MINSTRELS"
- "50 MILES FROM BOSTON"
- "45 MINUTES FROM BROADWAY"
- "GEORGE WASHINGTON JR"
- "THE HONEY MOONERS"
- "LITTLE JOHNNY JONES"
- "THE GOVERNOR'S SON"

BY GEO. M. COHAN