

Constance L. Williamson

Some Little Bird

Song

Words & Music

by

Haven Gillespie,

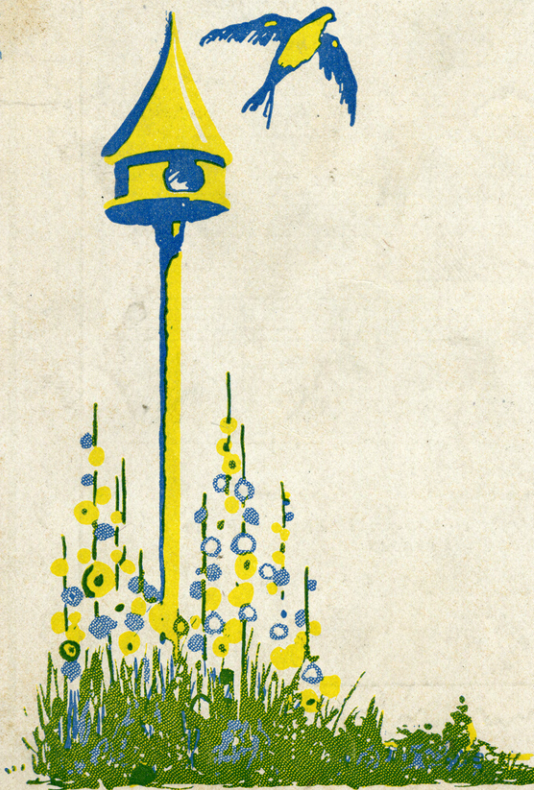
Lindsey McPhail &

Egbert Van Alstyne

©



WILSON ART
CHI.



The Name

Van Alstyne & Curtis

on Sheet Music is a
Guarantee of

Quality

YOU SHOULD HAVE ON YOUR PIANO
A COPY OF

"DREAMY PARADISE"

A Beautiful Hawaiian Melody with a
Rhythm You Can't Forget



TRY THIS REFRAIN.

GET IT NOW.

CHORUS

pp

I hear you call ing, Call ing to

pp

me, While shades are fall - ing, Far

oer the sea; Dark eyes a beam - ing,

For Sale Wherever Music is Sold

If for any reason your dealer cannot supply you, send 40c. direct to the publishers and you will receive prompt and courteous attention. Send all orders to

VAN ALSTYNE & CURTIS, MUSIC PUBLISHERS

177 North State Street, Chicago, or Gardner Building, Toledo, Ohio

NEW YORK

TOLEDO, O.

CHICAGO

SM 4842

"SOME LITTLE BIRD"

3

Words and Music by
HAVEN GILLESPIE,
LINDSAY Mc PHAIL &
EGBERT VAN ALSTYNE

Moderato

First system of piano introduction. Treble clef, bass clef, key signature of B-flat major (two flats), common time. Starts with a forte (f) dynamic. The right hand features a melodic line with eighth notes and quarter notes, while the left hand provides a steady accompaniment of quarter notes.

Second system of piano introduction. Continues the melodic and accompanimental lines from the first system. The right hand has some slurs and accents, and the left hand maintains the rhythmic pattern.

Vocal entry and piano accompaniment, first system. The vocal line begins with a piano (p) dynamic. The lyrics are: "Love comes like a lit-tle bird, Sing - - Don't cry, lone-ly lit-tle dove, *gva.* Don't". The piano accompaniment starts with a piano (p) dynamic and features a melodic line in the right hand and a bass line in the left hand.

Vocal entry and piano accompaniment, second system. The vocal line continues with the lyrics: "ing songs you nev-er heard, Some where sigh, you will find your love, Some day". The piano accompaniment continues with the same melodic and bass lines.

J.F. Albert & Sons,
Representative
Sidney, Australia.

Copyright, MCMXX, by Van Alstyne and Curtis.
Toledo - Chicago - New York.
International copyright secured. All rights reserved.

Herman Darewski,
London
Representative.

A Blue-bird waits_ Some time you'll find your mate.
 When Spring has come_ You'll hear your love bird hum.

fz *rit.*

CHORUS *p-f*

Some lit-tle bird is call-ing you oo

p-f

Some lit-tle bird is call-ing coo oo Some lit-tle

swal-low your foot-steps will fol-low And make all your dreams come

poco rit. *a tempo*

true, (I warn you) Some - time when love - birds are a mat -

poco rit. *a tempo*

ing, - You'll find a tur - tle dove a - wait ing;

Some Rob - in Red - Breast will build you a love nest, For
Don't be con - trar - y, go find your can - ar - y,

some lit - tle bird wants you. you. _____

The Name

Van Alstyne & Curtis

on Sheet Music is a Guarantee of

Quality

YOU SHOULD HAVE ON YOUR PIANO
A COPY OF

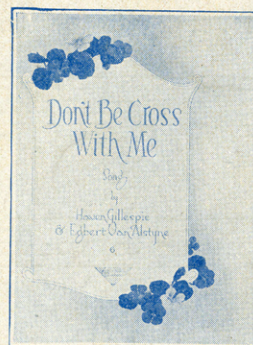
"Don't Be Cross With Me"

EGBERT VAN ALSTYNE'S latest and greatest ballad success—
even better than his

"In The Shade of the Old Apple Tree"

TRY THIS REFRAIN.

GET IT NOW.



CHORUS *p*

Don't be cross with me, sweet-heart, Let me see you
smile, Night and day when we're a-part, I feel so
lone-ly, I want you on-ly, Won't you tell me you'll for-give,

rit. *a tempo*

rit. *a tempo*

For Sale Wherever Music is Sold

If for any reason your dealer cannot supply you, send 40c. direct to the publishers and you will receive prompt and courteous attention. Send all orders to

VAN ALSTYNE & CURTIS, MUSIC PUBLISHERS

177 North State Street, Chicago, or Gardner Building, Toledo, Ohio

NEW YORK

TOLEDO, O.

CHICAGO