

'30-Feist.

70
7

MORACE BOOTON
Solo Organist

WITH APOLOGIES TO 'CHESTERFIELD'

They Satisfy

♦ FOX TROT SONG ♦

THEY SATISFY.



FEIST
NU-STYLE
MULTI-PART
EDITION
Including
Solos or Duets for
SAXOPHONES
(And Other F, B \flat , C Instruments)
TENOR BANJO
HAWAIIAN GUITAR
Accompaniments for
BANJO and GUITAR
in Lettered Chords
and
UKULELE
with Solo
ALL-IN-ONE



Words by
GUS KAHN
Music by
CARMEN LOMBARDO

LEO FEIST, INC.
56 COOPER SQUARE
NEW YORK



POPULAR EDITION

SM 8712

They Satisfy

Lyric by
GUS KAHN

★ FOX TROT SONG ★

Music by
CARMEN LOMBARDO

Moderato

Introduction musical notation for piano, featuring a melody in the right hand and accompaniment in the left hand. Dynamics include *f* and *mf*. A triplet of eighth notes is marked with a '3'.

Actual → F (See note below) → Transposed → G

E7 C+ D mi F A7
F#7 D+ E mi G B7

There was I,— there were you So man-y miles a-
This is love, this is real, Cant be a doubt a-

mf p

-part, dear, Deep down in my heart, dear, I felt so lone-ly and
-bout it; Been lone-ly with-out it, A wea-ry life-time it

Ami+6 D7 G7 C A7 Dmi Dmi7 G7
Bmi+6 E7 A7 D B7 Emi Emi7 A7

blue. Here am I,— here are you,— Same lit-tle two to-gether,
seems. I just knew,— I could feel— My heart would lead me to you,

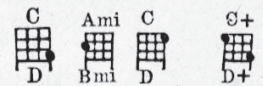
C7 F E7 Dmi F A7 Ami+6 D7
D7 G F#7 Emi G B7 Bmi+6 E7

**Smaller Ukulele diagrams are optional if played without Piano

Copyright 1930 by LEO FEIST, Inc. 56 Cooper Square, NEW YORK, U.S.A.
International Copyright Secured and Reserved

CANADA: RADIO MUSIC COMPANY, Ltd., 193 Yonge St., TORONTO
ENGLAND: FRANCIS, DAY & HUNTER, Ltd., London
FRANCE: PUBLICATIONS, FRANCIS-DAY, Paris
AUSTRALIA: ALLAN & CO, Prop, Ltd., Melbourne
GERMANY: FRANCIS, DAY, & HUNTER, G.m.b.H., Berlin.

LETTERS ABOVE DIAGRAMS ARE ACTUAL CHORD NAMES FOR GUITAR OR BANDO ACC. WITH PIANO
LETTERS BELOW DIAGRAMS ARE TRANSPOSED NAMES FOR UKULELE
TUNE UKULELE OR BANDO-UKLE C C C A



Im won - der - ing wheth - er You feel the way - that I do.
 You smiled and I knew you, The gold - en girl - of my dreams

CHORUS



When your eyes - look in - to mine, - They Sat - is - fy!

p-f *f-ff*



When I feel - your arms en - twine, They Sat - is - fy!

p-f *f-ff*



When you give your lips - in sweet sur - ren - - der, so ten -

p-f



Emi G7 C Dmi7 Cdim7 C C7 Gmi7 C7 Dmi Ami Dmi F E7 F7 Cdim7 D7
 F#mi A7 D Emi7 Ddim7 D D7 Ami7 D7 Emi Bmi Emi G F#7 G7 Ddim7 E7

-der, They Sat-is - fy! _____ Dim-pled cheeks just like a rose, They

Sat-is - fy! _____ Out-est lit - tle turned-up nose That caught my eye, _____

G7 A7 Gdim7 G7 Adim7 A7

ff *p-f* *ff*

Seems to me your charms grow sweet-er As the days go by, And

Emi G7 Gmi7 Gdim7 Gmi7 Gdim3 F C7 Ddim7 F D7
 F#mi A7 Ami7 Adim7 Ami7 Adim3 G D7 Edim7 G E7

p-f

that is why— They Sat-is - fy! _____ -fy! _____

G7 A7 C7 D7 1. F Alt Cdim7 C7 Gmi7 C7 2. F Bb Bbmi F
 G Ddim7 D7 Ami7 D7 G C Cmi G

3

BITS OF FEIST HITS

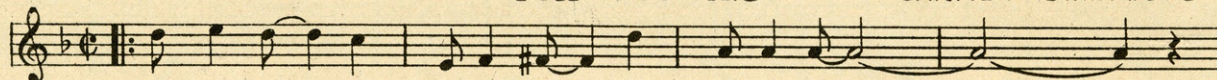
You've Heard Them On Your Radio ~ Buy Them For Your Piano ~

They Satisfy

LYRIC BY
GUS KAHN

✦ FOX TROT SONG ✦

MUSIC BY
CARMEN LOMBARDO



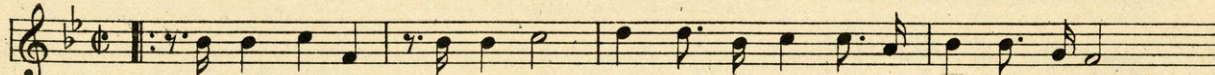
When your eyes look in-to mine, They Sat-is - fy!

The King's Horses (and the King's Men)

by NOEL GAY

✦ FOX TROT SONG ✦

and HARRY GRAHAM



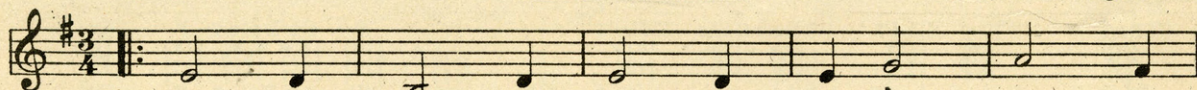
The King's Horses! The King's Men! March down the street and then march back a - gain,

Lonesome Lover

LYRIC BY
AL BRYAN

✦ WALTZ BALLAD ✦

MUSIC BY
JIMMIE MONACO



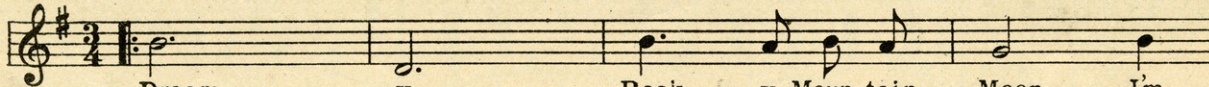
I am just a Lone - some Lov - er On - ly

Dreamy Rocky Mountain Moon

LYRIC BY
HARRY LEONARD

✦ WALTZ BALLAD ✦

MUSIC BY
KAMIE BELFILS



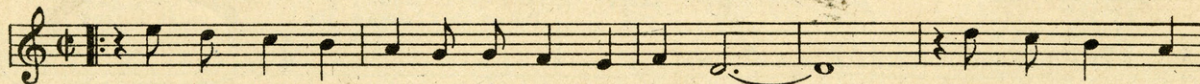
Dream - y Rock - y Moun - tain Moon, I'm

Little Spanish Dancer

LYRIC BY
TOT SEYMOUR

✦ FOX TROT SONG ✦

MUSIC BY
MABEL WAYNE



You were just a gay Lit tle Span - ish Danc - er When you danced my

COPIES ARE FOR SALE WHERE YOU BOUGHT THIS OR DIRECT @ 35 CENTS

Get It For Your Phonograph And Player ~ Piano!

LEO. FIEIST, INC., 56 Cooper Square NEW YORK

CANADA: RADIO MUSIC Co. Ltd. 193 YONGE ST., TORONTO

"YOU CAN'T GO WRONG WITH ANY 'FEIST' SONG"

They Satisfy!

(Saxophone Parts*)

(Play Large Notes for Solo - Small notes for Duet)

By GUS KAHN
and CARMEN LOMBARDO
Arr. by Frank E. Barry

E♭ Alto Saxophone (Also E♭ Baritone Sax., E♭ Clarinet or Alto Clarinet)

(Also Cello, Trombone or Baritone Solo, using Bass Clef signature and altered accidentals)

Moderato

Musical score for E♭ Alto Saxophone, consisting of five staves. The music is in 2/4 time with a key signature of one sharp (F#). It begins with a dynamic marking of *p* and a tempo marking of *Moderato*. The score includes various rhythmic patterns, including eighth and sixteenth notes, and rests. There are first and second endings marked with '1' and '2' at the end of the piece.

B♭ Tenor Saxophone (Also B♭ Soprano Sax., B♭ Trumpet, B♭ Clarinet or any "B♭" Instrument Trombone in C)

Moderato

Musical score for B♭ Tenor Saxophone, consisting of five staves. The music is in 2/4 time with a key signature of one sharp (F#). It begins with a dynamic marking of *p* and a tempo marking of *Moderato*. The score includes various rhythmic patterns, including eighth and sixteenth notes, and rests. There are first and second endings marked with '1' and '2' at the end of the piece.

C Melody Saxophone (Also C Soprano, Violin, Flute, Oboe or any "C" Instrument)

Moderato

Musical score for C Melody Saxophone, consisting of five staves. The music is in 2/4 time with a key signature of one sharp (F#). It begins with a dynamic marking of *f* and a tempo marking of *Moderato*. The score includes various rhythmic patterns, including eighth and sixteenth notes, and rests. There are first and second endings marked with '1' and '2' at the end of the piece.

* Introduction and
Vamp omitted

There IS Something New Under The Sun!
Here It Is →

FEIST
"NU-STYLE"
MULTI-PART
EDITION



Of Popular "Feist" Songs

What This "Nu-Style" FEIST Edition Is:

The copy consists of the usual title-page cover and a double insert.

The insert carries the regular words and music of the song, comprised in the Voice and Piano parts with the customary Ukulele diagrams.

Above each diagram is a letter, naming the Actual chord, to be used for Guitar or Banjo accompaniment in the same key as the Piano.

Below each diagram is a corresponding letter, naming the Transposed chord, the name of the chord formed by the Ukulele diagram, where the original key of the song necessitates the convenience of transposition.

The lower letters can also be used, if desired, for Guitar or Banjo without Piano. These lower letters do not appear when the Ukulele is non-transposing.

For simplicity, there are both large and small lettered diagrams, the smaller of which can be omitted if played without Piano.

The inside cover consists of two pages, one of which contains the following Saxophone parts:

E^b Alto Solo (large notes) with **Duet** (small notes)
Can also be used for **E^b Baritone Saxophone**, **E^b Clarinet**, **Alto Clarinet**, or any instruments in **E^b**.

B^b Tenor Solo (large notes) with **Duet** (small notes)
Can also be used for **B^b Soprano Saxophone**, **B^b Trumpet**, **B^b Clarinet**, or any instruments in **B^b**.

C Melody Solo (large notes) with **Duet** (small notes)
Can also be used for **C Soprano Saxophone**, **Violin**, **Flute**, **Oboe**, or any instruments in **C**.

The **Duet** feature (small notes) is playable in almost any combination.

The other page of the inside cover contains:

Tenor Banjo Solo (with Chords named and fingered)

Hawaiian (Steel) Guitar Solo (with chords named and fingered)

Any of the Solos or Duets may be accompanied by the Piano, also Ukulele, Guitar or Banjo by using the lettered chords in the Voice and Piano part.

MUSIC - THE TIE THAT BINDS!

Self-played and Sung Music in the Home in which more than one musically-inclined member can participate, is one of Life's greatest joys and is a "Tie That Binds" both family and friends together.

FEIST "Nu-Style" MULTI-PART EDITION is especially adaptable for Home Use!

Whenever you bought a copy of a popular song in the past all that you expected and all that you got was a song, a melody with words to be sung and a Piano accompaniment!

But someone else in the home, who neither sang nor played the Piano, but who did play some other instrument, also felt the urge to join in the pleasure of playing the latest song, but could not do so because of the lack of technical skill essential in adapting the melody to their chosen instrument.

When the Ukulele became a popular instrument, because of its simplicity and portability, the little diagrams for the formation of harmonic chords to accompany the voice were added to popular song publications.

But that was not sufficient, other instruments were among the chosen; the Saxophone family, the Violin, the Clarinet, the Trumpet, the Banjo, the Guitar and others had their followers, so how could everyone join in the joy of playing that latest song without a part to play it from? They couldn't, but they can now!

*The Nu-Style MULTIPART Edition of Feist Songs
Supplies this want and again proves the truth of our slogan,*

→ **"You Can't Go Wrong With Any 'Feist' Song"**

IMPORTANT and Best of All: There Is No Increase In Price For This Edition!

**Ask Your Dealer For The FEIST "Nu-Style" MULTI-PART EDITION
Look For The Shield Trade-Mark (Illustrated Above) On The Title Page**

