

STARTING AT THE BOTTOM

GREEN-GENSLER CORPORATION PRESENTS

# JOE COOK.

## IN FINE AND DANDY

BOOK BY  
DONALD OGDEN STEWART

MUSIC BY

KAY SWIFT

LYRICS BY

PAUL JAMES

ENTIRE PRODUCTION DIRECTED BY MORRIS GREEN



BEN.  
WORLD

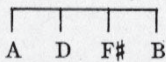
Nobody Breaks My Heart  
The Jig Hop  
Can This Be Love? •  
Fine And Dandy  
Starting At The Bottom

**HARMS**  
INCORPORATED  
NEW YORK  
CHAPPELL & CO LTD.  
LONDON SYDNEY  
MADE IN U. S. A.

# Starting At The Bottom

Words by  
PAUL JAMES

Tune Ukulele or Banjulele Banjo



Put Capo on 1st Fret

Music by  
KAY SWIFT

SM8678

Moderato cantabile

VOICE

PIANO

\* F7

Bb7

F7

How the scene\_ has been changed! Ev - 'ry - thing\_ has been

Bb7

Eb7

Ab

Abmi.

re - ar - ranged.\_ Now I know\_ what those words mean,\_ "A

\*Letters over Uke Diagrams are names of chords adaptable to Banjo or Guitar in original key.

Ukulele arr. by S.M. Zoltai

Copyright MCMXXX by HARMS Inc.

S-351-4

Copyrighted in South America for Harms Inc., by Harry Kosarin, Rio de Janeiro  
Propiedad Asegurada Para Harms Inc., en Republica Argentina Por Harry Kosarin, Buenos Aires  
Propiedad Asegurada Para Harms Inc., en Republica Uruguay Por Harry Kosarin, Montevideo

International Copyright Secured

Made in U. S. A.

ALL RIGHTS RESERVED INCLUDING PUBLIC PERFORMANCE FOR PROFIT

E $\flat$  A $\flat$  B $\flat$ 7 Cmi. E $\flat$  Cmi. E $\flat$  F7 B $\flat$ 7

brand new broom sweeps clean." Step by step, — I must climb. —

F7 B $\flat$ 7 E $\flat$ 7

I'll get hep — if they give me time, — Though it's hard —

A $\flat$  A $\flat$ mi. E $\flat$  Fmi.7 B $\flat$ 7 E $\flat$  Cmi. add A E $\flat$ mi.7 *animato*

I have hopes, — Once I know the ropes. What's the use — of

A $\flat$ mi.7 D7 G B $\flat$ 7 *rit.* Gmi. B $\flat$  aug.5

all this hard - won col - lege knowl - edge?

REFRAIN

*p-f*



Start - ing - at the bot - tom, It's tough - er to suf - fer With

no one to show one The sur - est way - to make good.

Blue days, - when you've got 'em, They make you so lone - ly, And

you say, "If on - ly I'd find the way - to make good."



Bb Cmi.7 open F#dim. Bb Gmi. Bb Eb F7

There is some one, who Could sup - ply my ach - ing need.

*mf poco vivo*

Bb Bb7 Eb Ebmi. Bb F7 Bb7 Ab Gmi. Bb7

If she'll see it through, Then the fu - ture's guar - an - teed.

Eb F#dim. Bb7 Eb F#dim. Bb7

Start - ing at the bot - tom, With my girl be - side me To

Eb9 Eb7 Ab Abmi. add F Eb Bb7 1. Eb F#dim. Bb7 2. Eb

help me and guide me, I'll find the way to make good. good.

*f*

FOUR SUCCESSFUL MUSICAL NUMBERS  
*From*  
**THE LITTLE SHOW**  
 MUSICAL REVUE

I've Made A Habit Of You

Duet

Refrain



He: I've cut out smok-ing, I've cut out drink-ing, I've made a hab - it of  
 She: I'm off flirt - a - tions and care-less pet - ting, I've made a hab - it of

A Little Hut In Hoboken

Refrain Not fast



We'll find a lit-tle hut for two in Ho - bo-ken, no jok-in'!

Or What Have You?

Refrain



I want a place to spoon, a man, a moon, - Or what have you?  
 (A) wed-ding cake to slice, a ring and rice, - Or what have you?

Moanin' Low

Refrain



Moan-in' low: My sweet man - I love him so, Though he's mean as - he can

Copyright MCMXXIX by HARMS Inc., N. Y.

Copyrighted in South America by Harry Kosarin, Rio de Janeiro

Propiedad Asegurada Para Republica Argentina Por J. Fellu e Hijos, Buenos Aires

International Copyright Secured Made in U. S. A. All Rights Reserved

SHEET MUSIC, RECORDS AND PLAYER PIANO ROLLS  
 OBTAINABLE WHEREVER MUSIC IS SOLD

**HARMS**  
 INCORPORATED  
 NEW YORK