

Singing A Song To The Stars

Lyric by Howard Johnson

Music by Joseph Meyer

WILLIAM HAINES



IN Way Out West



A
Metro-Goldwyn-Mayer
ALL TALKING PICTURE

ROBBINS MUSIC CORPORATION

799 Seventh Avenue, New York

Try these Melodies Over

Blue Is The Night

Featured in Metro-Goldwyn-Mayer's Production "THEIR OWN DESIRE"

Words and Music by
FRED FISHER

Chorus ** Open*

Blue Is The Night a - bove me
Blue as your eyes are blue

Sung by Cliff Edwards

Detailed description: This block contains the musical score for the song 'Blue Is The Night'. It includes a vocal line with lyrics and a piano accompaniment. The score is divided into two systems. The first system shows the vocal line starting with 'Blue Is The Night a - bove me' and the piano accompaniment. The second system shows the vocal line continuing with 'Blue as your eyes are blue' and the piano accompaniment. There are guitar chord diagrams above the vocal line. The piano part includes dynamics like 'p-f' and 'mp'.

The Moon Is Low

Featured in Metro-Goldwyn-Mayer's Production "Montana Moon"

Words by
ARTHUR FREED

Revised Edition

Music by
NACIO HERB BROWN

Chorus (*Slowly with expression*)

The Moon Is Low stars up - a - bove And this is the night to tell you of
love A - lone we two a camp-fire gleams To-night we will

Detailed description: This block contains the musical score for the song 'The Moon Is Low'. It includes a vocal line with lyrics and a piano accompaniment. The score is divided into two systems. The first system shows the vocal line starting with 'The Moon Is Low stars up - a - bove And this is the night to tell you of' and the piano accompaniment. The second system shows the vocal line continuing with 'love A - lone we two a camp-fire gleams To-night we will' and the piano accompaniment. There are guitar chord diagrams above the vocal line. The piano part includes dynamics like 'mp'.

Uke Arr. By Milt Coleman

Copyright 1930 by Metro-Goldwyn-Mayer Corp., New York, N.Y.
Exclusive Distributors Robbins Music Corporation, 799 Seventh Ave., New York
Made in U.S.A.

Complete Song May Be Purchased From Your Favorite Dealer

Sung by Cliff Edwards

Singing A Song To The Stars

SM 8661

Featured in Metro-Goldwyn-Mayer's Production "Way Out West"

Lyric by
HOWARD JOHNSON

Music by
JOSEPH MEYER

Moderato

mp sostenuto

These wide o - pen spa — ces are the same as my heart, — So

lone - ly and emp — ty con - stant - ly — I

miss your em - bra — ces ev - er since we're a - part — My

Uke Arr. by Milt Coleman Copyright 1930 by Metro - Goldwyn - Mayer Corp. New York, N.Y.

Exclusive Distributors Robbins Music Corporation, 799 Seventh Ave., New York, N.Y.

Tune Ukulele

SH 695-3
CODE - Stars

Copyrighted in South America by Harry Kosarin, Rio de Janeiro
 Propiedad Asegurada Para Republica Argentina Por Harry Kosarin, Buenos Aires
 Propiedad Asegurada Para Republica Uruguay Por Harry Kosarin, Montevideo
 International Copyright Secured Made in U.S.A. All Rights Reserved

G.C.E.I.A.

one con - so - la - tion seems to be _____

rit.

Chorus

Sing - ing _____ A Song To The Stars, _____ and count - ing _____

mp. f

each one _____ think - ing _____ your

eyes are the stars _____ that twin - kle, twin - kle when the day is done _____

Croon - ing a lov - er's la - ment

Till morn - ing when dawn comes thru'

Sing - ing A Song To The Stars and dream - ing, Just dream -

ing of you. you.

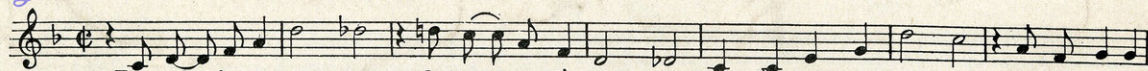
SH 695-3

Be sure to ask for
FIFTY FAMOUS FAVORITES
The only Folio ever published containing complete verse & chorus of such good old time songs as
"IN THE GOOD OLD SUMMER TIME" "SIDEWALKS OF NEW YORK"

SONG SUCCESSES FROM THE FOREMOST TALKIES

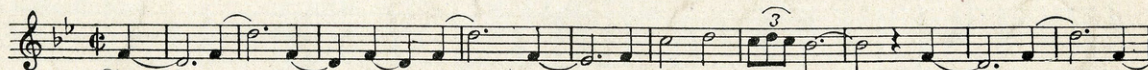
THE COLLECTION OF
Gene Blakely

Cooking Breakfast for the One I Love



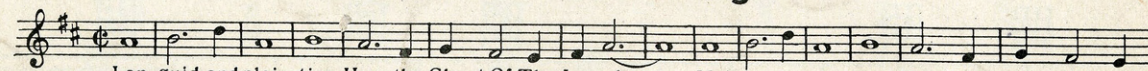
The cof - fee is steam-ing, Oh! boy what I'm dream-ing While I'm Cook-ing Break-fast For The One I
Copyright 1930 by William Rose Inc., New York, N.Y.

Should I



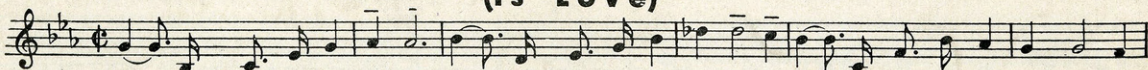
Should I re-veal ex-act-ly how I feel Should I con-fess I love you Should I re-cite Be
Copyright 1929 by Metro-Goldwyn-Mayer Corp. New York, N.Y.

Chant of the Jungle



Lan-guid and plain-tive, Hear the Chant Of The Jun-gle — Mel-o-dy na-tive, Hear the Chant Of The
Copyright 1929 by Metro-Goldwyn-Mayer Corp. New York, N.Y.

That Wonderful Something (Is Love)



Some-thing's bring-ing you near-er Some-thing's mak-ing life dear-er I know, That Won-der-ful Some-thing Is
Copyright 1929 by Metro-Goldwyn-Mayer Corp. New York, N.Y.

Charming



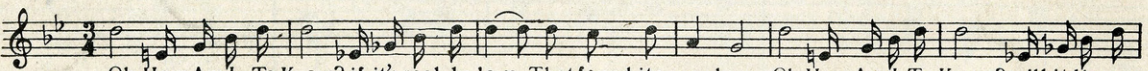
How can you be so Charm-ing, Charm-ing? Love-ly to see. But no use for me? I'm just a slave to you.
Copyright 1929 by Metro-Goldwyn-Mayer Corp. New York, N.Y.

When I'm Looking at You



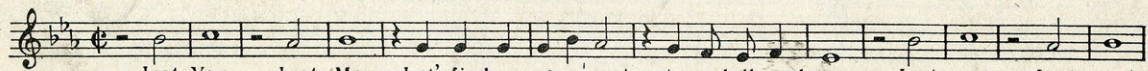
Why is the sun bright-er? Why is thy day light-er? What makes the blue of the sea blu-er When I'm Look-ing At
Copyright 1929 by Metro-Goldwyn-Mayer Corp. New York, N.Y.

How Am I To Know



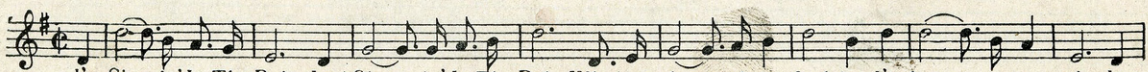
Oh, How Am I To Know? if it's real-ly love. That found its way here, Oh, How Am I To Know? will it lin-ger
Copyright 1929 by Metro-Goldwyn-Mayer Corp. New York, N.Y.

Just You, Just Me



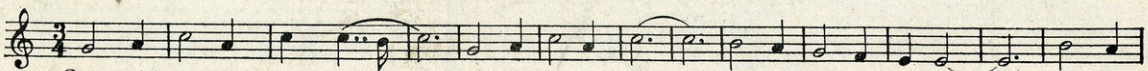
Just You, Just Me, Let's find a co-zyspot, to cud-dle and coo. Just us, Just we,
Copyright 1929 by Metro-Goldwyn-Mayer Corp. New York, N.Y.

Singin' in the Rain



I'm Sing-in' In The Rain, Just Sing - in' In The Rain. What a glo - ri-ous feel-ing I'm hap - py a - gain, I'm
Copyright 1929 by Metro-Goldwyn-Mayer Corp. New York, N.Y.

Pagan Love Song



Come with me where moon-beams — Light Ta-hi-tian skies — And the star-lit wa-ters — Lin-ger
Copyright 1929 by Metro-Goldwyn-Mayer Corp. New York, N.Y.

799 7th Ave.

COPIES OBTAINABLE AT YOUR MUSIC DEALER

ROBBINS MUSIC CORPORATION

New York