

SING

Rena D. Lewis

A Happy Little Thing

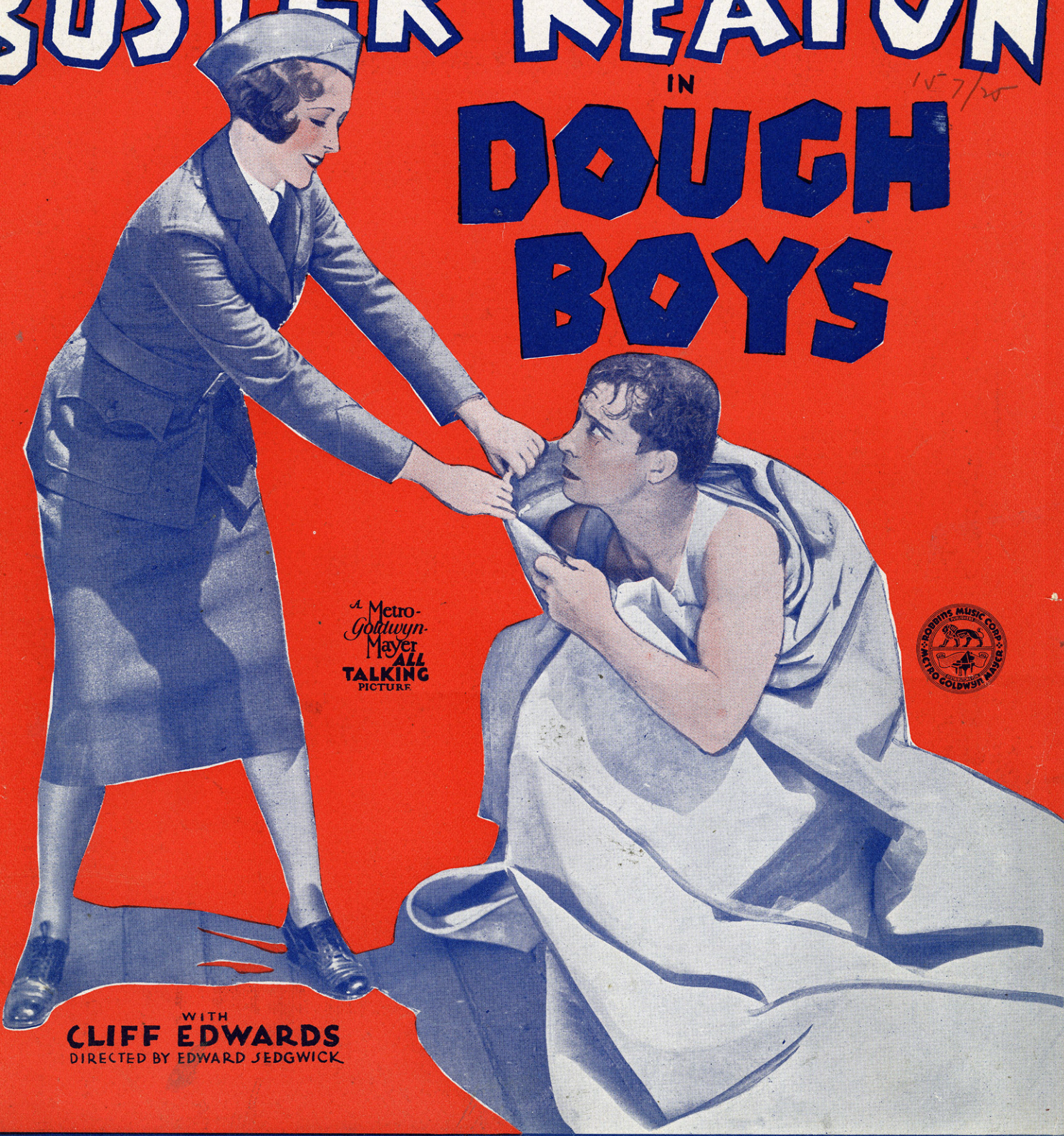
Words by Howard Johnson

Music by Joseph Meyer

BUSTER KEATON

IN
DOUGH BOYS

157/25



a Metro-Goldwyn-Mayer
ALL TALKING PICTURE



WITH
CLIFF EDWARDS
DIRECTED BY EDWARD JEDGWICK

ROBBINS MUSIC CORPORATION
799 Seventh Avenue, New York

Sung by Cliff Edwards

Sing

SM 8656

A Happy Little Thing

Featured in Metro-Goldwyn-Mayer's Production "Dough Boys"

Words by
HOWARD JOHNSON

Music by
JOSEPH MEYER

Moderato

f

Detailed description: This block contains the piano introduction for the song. It is written in G minor (one flat) and 4/4 time. The tempo is marked 'Moderato'. The music starts with a treble clef and a bass clef. The treble staff begins with a quarter note G4, followed by quarter notes A4, Bb4, and C5. The bass staff has a whole rest. The piece continues with a series of eighth and sixteenth notes in the treble, and a bass line that enters in the third measure with a half note G3. The introduction concludes with a final chord in the treble and a quarter note G4 in the bass.

When it comes to get-ting up, that's what I de-test — For

mf

Detailed description: This block contains the first line of the song. The vocal line is on a treble clef staff with lyrics underneath. The piano accompaniment is on a grand staff (treble and bass clefs). The piano part starts with a half note G3 in the bass and a half note Bb4 in the treble. The vocal line begins with a quarter note G4, followed by quarter notes A4, Bb4, and C5. The piano part continues with a steady accompaniment of eighth notes in the bass and chords in the treble. The lyrics are: "When it comes to get-ting up, that's what I de-test — For".

rest is the best — thing I know, Can there be no let-ting up, no

Detailed description: This block contains the second line of the song. The vocal line continues on the treble clef staff with lyrics. The piano accompaniment continues on the grand staff. The lyrics are: "rest is the best — thing I know, Can there be no let-ting up, no". The piano part features a consistent accompaniment with chords in the treble and a bass line in the bass.

CODE-Sing

Uke Arr. by Milt Coleman

Copyright 1930 by Metro-Goldwyn-Mayer Corp. New York, N.Y.

Exclusive Distributors Robbins Music Corporation, 799 Seventh Ave., New York,

Copyrighted in South America by Harry Kosarin, Rio de Janeiro

Propiedad Asegurada Para Republica Argentina Por Harry Kosarin, Buenos Aires

Propiedad Asegurada. Para Republica Uruguay Por Harry Kosarin, Montevideo

International Copyright Secured

Made in U.S.A.

All Rights Reserved

Tune Ukulele

Detailed description: A small musical staff showing the first four notes of the melody: G4, C5, E5, A5. Below the staff is a chord diagram for a G major chord on a four-string ukulele, represented as G C E A.

G C E A



rest from the pest— They call Mist-er troub - le and woe, All the

flur - ry and the wor - ry that he cau - ses has been

wished on ev-'ry-bo-dy I am sure if you ev-er want to try, and

shake that old guy,— let me sug - gest a cure —

Chorus

Sing a hap-py lit-tle thing come on and let us

mf-f

bring joy to the new days Bing, out go the Blue days -

open

Sing just like a bird in Spring and let the e - cho

ring way up in Heav - en Song is King, This life is

open

cold un-less we have that cer-tain spark its all con-trolled by

mus-ic, So from morn till dark be a lark, and just Sing

Open

- and you can have your fling Ac-com-plish an-y - thing

- if you will on-ly Sing Sing

SH 700-4

A Truly Unusual Folio of
WORLD FAMOUS LOVE SONGS
 Includes such favorites as
 "WHISPERING HOPE" "LA GOLANDRINA"
 "CIELITO LINDO" "VOLGA BOAT SONG", etc.

SONG SUCCESSES FROM THE FOREMOST TALKIES

Just A Little Closer



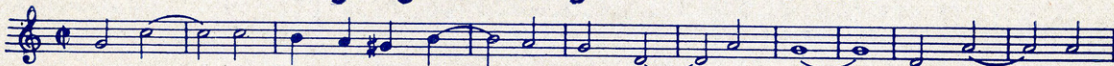
Just A Little Clo-ser ev-'ry day to me— That's the way I long to hear you say you'll be—
Copyright 1930 by Metro-Goldwyn-Mayer Corp. New York, N.Y.

Cheer Up (Good Times Are Comin')



Heigh-Ho Yea-Bo Good-times are com-in' Good-times are com-in' So Cheer Up
Copyright 1930 by Metro-Goldwyn-Mayer Corp. New York, N.Y.

Singing a Song To the Stars



Sing-ing— A Song To The Stars,—and count-ing— each one— think-ing— your
Copyright 1930 by Metro-Goldwyn-Mayer Corp. New York, N.Y.

The Moon Is Low



The Moon is Low— stars up a - bove— And this is the night— to tell you of love—
Copyright 1930 by Metro-Goldwyn-Mayer Corp. New York, N.Y.

Anchors Aweigh



Stand Na-vy down the field Sail to the sky— We'll nev-er change our course so
Copyright 1930 by Metro-Goldwyn-Mayer Corp. New York, N.Y.

Blue Is the Night



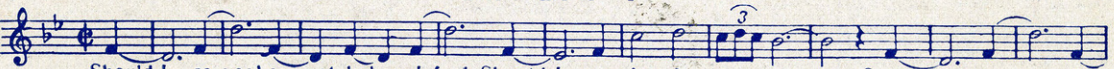
Blue— Is The Night a - bove me Blue— as your eyes are blue— Bright—
Copyright 1930 by Metro-Goldwyn-Mayer Corp. New York, N.Y.

The Woman in the Shoe



The Wom-an In The Shoe had a fam-i-ly That al-ways kept her life in a Jam-bo-ree, She
Copyright 1930 by Metro-Goldwyn-Mayer Corp. New York, N.Y.

Should I



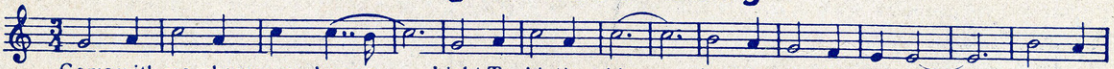
Should I re-veal ex-act-ly how I feel Should I con-fess I love you Should I re-cite Be
Copyright 1929 by Metro-Goldwyn-Mayer Corp. New York, N.Y.

When I'm Looking at You



Why is the sun bright-er? Why is thy day light-er? What makes the blue of the sea blu-er When I'm Looking At
Copyright 1929 by Metro-Goldwyn-Mayer Corp. New York, N.Y.

Pagan Love Song



Come with me where moon-beams— Light Ta-hi-tian skies— And the star-lit wa-ters— Lin-ger
Copyright 1929 by Metro-Goldwyn-Mayer Corp. New York, N.Y.

799 7th Ave.

COPIES OBTAINABLE AT YOUR MUSIC DEALER

ROBBINS MUSIC CORPORATION

New York