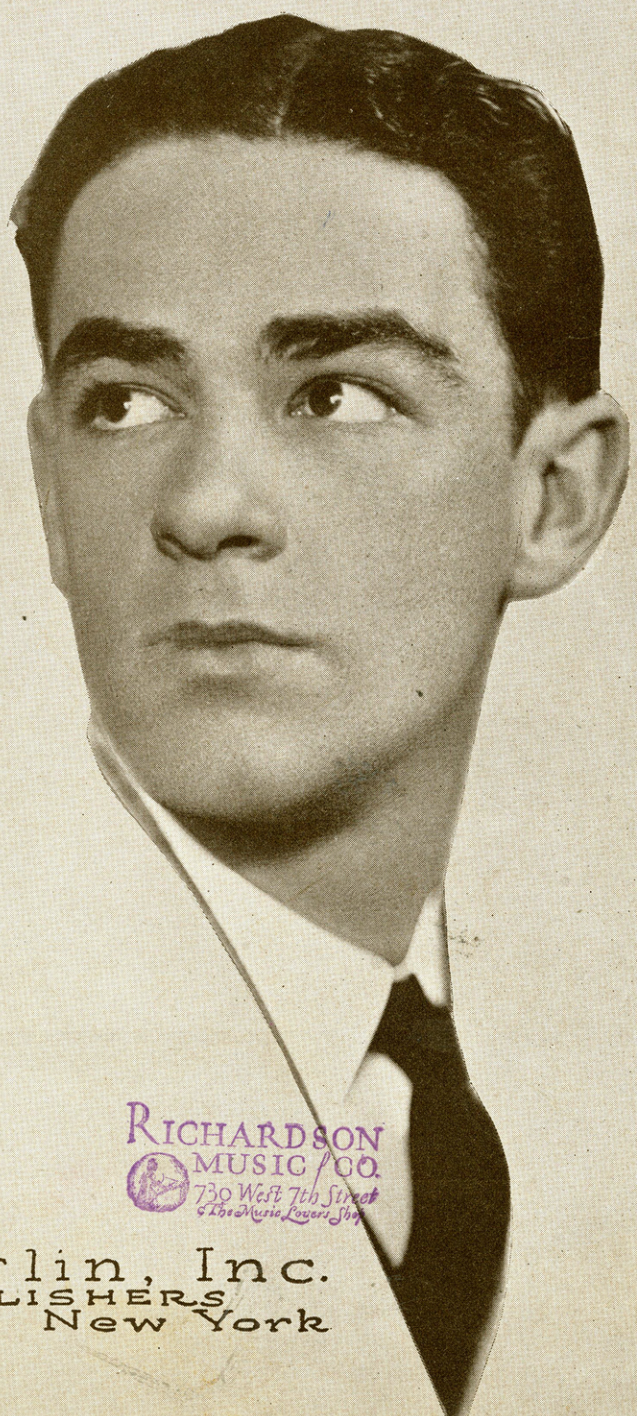


Bould

On a Blue and Moonless Night

as introduced by
WILL OSBORNE



By
CHARLES O'FLYNN
AL HOFFMAN
and
WILL OSBORNE

RICHARDSON
MUSIC CO.
730 West 7th Street
The Music Lovers Shop

Irving Berlin, Inc.
MUSIC PUBLISHERS
1607 Broadway New York



MADE IN
USA

ORDER CODE
"MOONLESS"

On A Blue And Moonless Night

Tune Ukulele
or Banjulele Banjo

A D F# B

Put Capo on 1st Fret

By CHARLES O'FLYNN
AL HOFFMAN
& WILL OSBORNE

SM 8603

Moderato

Piano

The piano introduction consists of two staves. The right hand starts with a series of chords in the treble clef, including a half-note chord with a sharp sign, followed by eighth-note chords. The left hand plays a simple bass line with quarter notes and rests.

This section continues the piano accompaniment. It features a 'Vamp' section marked with a 'p' (piano) dynamic. The right hand has a melodic line with a slur over several notes, and the left hand continues with a steady bass line.

Voice

Black shad - ows seem to fill my heart, each
We part - ed and we went our ways that

The vocal line is written in a single staff with four chords indicated by diagrams above the notes. The piano accompaniment is in two staves, with a 'p' (piano) dynamic marking. The lyrics are aligned with the vocal notes.

Ukulele Arr. by
MAY SINGHI BREEN

time night I think of you
we said "Good - bye"

Blue mem - 'ries of a part - ing kiss, A
Now may - be you've found bright - er days, but

tear sweet and then a - dieu.
heart, I still sigh.

Chorus

On a blue and moon - less

pf

night All the stars hid from my

sight As you whis - pered with a

sigh "This must be good - bye,

dear," Nights will come and nights will

go, Stars may gleam, the moon may

glow, But for me, dear, Ev - 'ry night will

be a Blue and moon - less

1. night. 2. night.

STANDARDS OF THE WORLD

"STERLING" ON SILVER
"IRVING BERLIN" ON SONGS

THE OUTSTANDING HIT OF THE YEAR

LOVE

YOUR SPELL IS EVERYWHERE

Words by
ELSIE JANIS

Music by
EDMUND GOULDING

REFRAIN

Love — your ma - gie spell is ev - 'ry - where —

mf molto rubato

Love — I knew you well and found you fair —

cresc.

Then you left me and I laughed at fate,

Copyright 1929 by IRVING BERLIN, Inc., 1607 Bway, N.Y.
International Copyright Secured Made in U.S.A. All Rights Reserved

COPIES ON SALE WHEREVER MUSIC IS SOLD
This Number can also be had for your Phonograph and Player Piano