

THERE'S SOMETHING ABOUT AN
OLD FASHIONED GIRL

De Sylva, Brown and Henderson's
Successor to "Sunny Side Up"

JUST IMAGINE



A Fox Movietone
Romance

Directed by

David Butler

with songs by

**De Sylva, Brown
and Henderson**

with

EL BRENDEL

Maureen O'Sullivan

Marjorie White

John Garrick

Frank Albertson

THERE'S SOMETHING ABOUT AN
OLD FASHIONED GIRL
NEVER SWAT A FLY

I AM ONLY THE WORDS
YOU ARE THE MELODY

DE SYLVA, BROWN AND HENDERSON, INC.

Music Publishers
DE SYLVA, BROWN AND HENDERSON BUILDING 745 SEVENTH AVENUE, NEW YORK.

MADE IN U. S. A.

THERE'S SOMETHING ABOUT AN OLD FASHIONED GIRL

Ukulele arr. by
MAY SINGHI BREEN
"The Ukulele Lady"

Tune Ukulele or Banjulele Banjo
G C E A

By B. G. DE SYLVA, LEW BROWN
and RAY HENDERSON

SM 8601

Moderato

VOICE

PIANO

Till ready

G G7 C G C

Par - don me if I seem high hat To the girl who

* Letters over Diagrams are names of the chords adaptable to Banjo or Guitar and are written one tone higher than original for simplicity.

Copyright 1930 by De Sylva, Brown and Henderson Inc.
 Copyrighted in South America for De Sylva, Brown and Henderson Inc., by Harry Kosarin, Rio de Janeiro
 Propiedad Asegurada Para De Sylva, Brown and Henderson Inc., en Republica Argentina Por Harry Kosarin, Buenos Aires
 Propiedad Asegurada Para De Sylva, Brown and Henderson Inc., en Republica Uruguay Por Harry Kosarin, Montevideo
 International Copyright Secured Made in U. S. A.

D7 G G7 C

now holds sway. I can on - ly take off my hat

Detailed description: This system contains the first four measures of the piece. The vocal line starts with a half note 'now' (G4), followed by quarter notes 'holds' (A4), 'sway.' (B4), 'I' (G4), 'can' (A4), 'on - ly' (B4), 'take' (G4), 'off' (A4), 'my' (B4), and 'hat' (G4). The piano accompaniment features a steady bass line and chords in the right hand.

G C D7 G B

To the girl of yes - ter - day. May - be I'm old

Detailed description: This system contains the next four measures. The vocal line continues with 'To' (G4), 'the' (A4), 'girl' (B4), 'of' (G4), 'yes - ter - day.' (A4), 'May - be' (B4), 'I'm' (G4), and 'old' (A4). The piano accompaniment continues with chords and a moving bass line.

F#7 B F#7 A7

fash - ioned But I ad - mire_ so The

Detailed description: This system contains the next four measures. The vocal line has 'fash - ioned' (F#4), 'But' (G4), 'I' (A4), 'ad - mire_' (B4), 'so' (F#4), and 'The' (G4). The piano accompaniment features a more active bass line and chords.

D A7 D Cmi. D7

type that blos - somed fif - ty years a - go.

Detailed description: This system contains the final four measures. The vocal line has 'type' (D4), 'that' (E4), 'blos - somed' (F#4), 'fif - ty' (G4), 'years' (A4), and 'a - go.' (D4). The piano accompaniment concludes with a final chord and a sustained bass note.

REFRAIN

There's some - thing a - bout an Old Fash-ioned Girl That

G C G B7 E mi. G 7

brings back the long, long a - go. My

A mi. D 7 G C D 7

heart sings the praise of her love - ly ways And

G C G B 7 E mi. G 7

en - vies her old fash-ioned beau. The mod - ern

A mi. D 7 G A mi. G G 7 C

Old Fashioned Girl - 4

HEAR

BRUNSWICK · RECORDS

E7 Ami. Cmi.

miss I know would be glad — To have the

A7 D7 G C

charm that my grand-moth - er had. — So you paint the

G G7 C E7 Ami. Cmi. G

town While I set - tle down With an old fash - ioned

C D7 1. G C D7 2. G G7 C G

girl that I know. — There's know. —

Old Fashioned Girl - 4

HEAR BRUNSWICK · RADIO · WITH · PANATROPE ·



OUTSTANDING SONG HITS

From

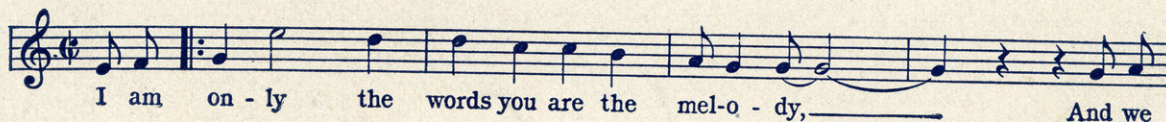
THE WILLIAM FOX MOVIE TONE PRODUCTION

JUST IMAGINE

By B.G. DE SYLVA, LEW BROWN and RAY HENDERSON

I AM ONLY THE WORDS YOU ARE THE MELODY

CHORUS



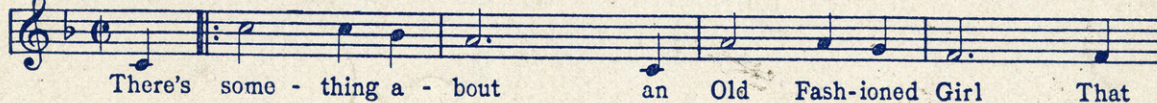
Never Swat A Fly

CHORUS



THERE'S SOMETHING ABOUT AN OLD FASHIONED GIRL

REFRAIN



Copyright 1930 by De Silva, Brown and Henderson Inc., 745 Seventh Ave., New York

COPIES ON SALE WHEREVER MUSIC IS SOLD
THESE NUMBERS CAN ALSO BE HAD FOR YOUR PHONOGRAPH AND PLAYER PIANO

DE SYLVA, BROWN AND HENDERSON, INC.
Music Publishers
DE SYLVA, BROWN AND HENDERSON BUILDING
745 SEVENTH AVENUE NEW YORK