

# LONESOME LOVER

WALTZ  
BALLAD

*Lyric by*  
**AL BRYAN**  
*Music by*  
**JIMMIE MONACO**

**FEIST**  
"NU-STYLE"  
MULTI-PART  
EDITION  
Including  
• Solos or Duets for  
**SAXOPHONES**  
(And Other E<sup>b</sup>, B<sup>b</sup>, & C Instruments)  
**TENOR BANJO**  
**HAWAIIAN GUITAR**  
Accompaniments for  
**BANJO and GUITAR**  
(by Lettered Chords)  
and  
**UKULELE**  
TRADE MARK  
"ALL-IN-ONE!"



*Featured by*  
**GUY LOMBARDO**  
*and his*  
**ORCHESTRA**



**LEO FEIST, INC.**  
56 COOPER SQUARE  
NEW YORK



**POPULAR EDITION**





SM 8569

# Lonesome Lover

Lyric by  
AL BRYAN

WALTZ BALLAD

Music by  
JIMMIE MONACO

Piano introduction in 3/4 time, key of G major. The music features a waltz-like melody in the right hand and a simple accompaniment in the left hand.

Actual → G  
(See note below \*) →

Chord diagrams for the first system: D7, Bmi, D7, Em1, Emi+6, Emi7, G.

Please don't smile when I sigh, Please don't  
All my dreams are in vain, Love has

Musical notation for the first vocal line, including piano accompaniment. The lyrics are: "Please don't smile when I sigh, Please don't All my dreams are in vain, Love has".

Chord diagrams for the second system: D7, Bmi, D7, Em1, Emi+6, Emi7, B, F#7, E, F#7.

laugh when I cry, I'm just a fool who re -  
brought me but pain, If you will try to con -

Musical notation for the second vocal line, including piano accompaniment. The lyrics are: "laugh when I cry, I'm just a fool who re - brought me but pain, If you will try to con -".

\*\*) Small diagrams are optional if played without Piano

Copyright 1930 by LEO. FEIST, Inc. 56 Cooper Square, NEW YORK, U.S.A.  
International Copyright Secured and Reserved

CANADA: RADIO MUSIC COMPANY, Ltd., 193 Yonge St., TORONTO

ENGLAND: FRANCIS, DAY & HUNTER, Ltd., London  
AUSTRALIA: ALLAN & CO., Prop., Ltd., Melbourne

FRANCE: PUBLICATIONS, FRANCIS-DAY, Paris  
GERMANY: FRANCIS, DAY, & HUNTER, GmbH, Berlin.

LETTERS ABOVE DIAGRAMS  
ARE CHORD NAMES FOR  
UKULELE, GUITAR,  
OR BANJO ACC.  
WITH PIANO

TUNE UKULELE  
& BANJO-UKULELE A D F# B

4

G#mi

B

A dim7

A7

D7

Ami7

D7

- mem - bers          Some - one who          bid me good - bye.  
- sole          me          I'll nev - er          bore you a - gain.

CHORUS

Emi

G

G

Emi

G

Emi

G

A7

F#mi

I am just a Lone - some Lov - er On - ly

A7

F#mi

A7

F#mi

A7

D7

Bmi

D7

Bmi

try - ing to dis - cov - er          Some - one who'll be

D7

Ddim7

Alt

D

Ddim7

D7

Ddim7

D7

Ddim7

Gdim7

sweet and gen - tle          To a heart that is so sen - ti -



D7 Ami D7 Emi G Emi G

men - tal; Oh, Let me hold your hand for

E mi G A7 F#mi A7 F#mi A7 F#mi A7

on - ly Just a mo - ment while I'm lone - ly,

D7 Bmi D7 Bmi D7 Ddim7 Alt D Bmi

In this world there is no oth - er Lone - some

D7 Bmi D7 1. G Alt Gdim7 D+ 2. G Gdim7 G

Lov - er like me. me.

# BITS OF FEIST HITS

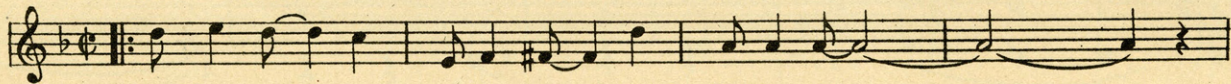
You've Heard Them On Your Radio ~ Buy Them For Your Piano ~

## They Satisfy

LYRIC BY  
GUS KAHN

✦ FOX TROT SONG ✦

MUSIC BY  
CARMEN LOMBARDO



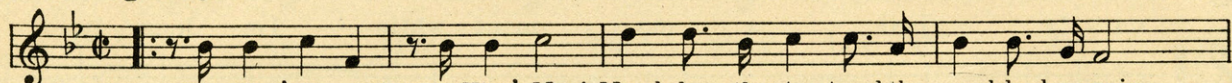
When your eyes\_ look in-to mine,\_ They Sat-is- fy!

## The King's Horses (and the King's Men)

by NOEL GAY

✦ FOX TROT SONG ✦

and HARRY GRAHAM



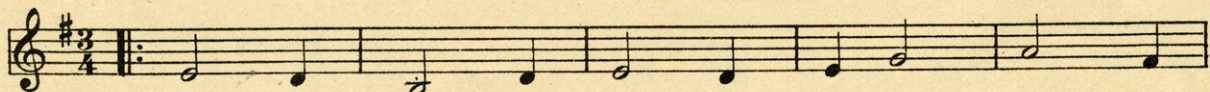
The King's Hors-es! The King's Men! March down the street and then march back a- gain,

## Lonesome Lover

LYRIC BY  
AL BRYAN

✦ WALTZ BALLAD ✦

MUSIC BY  
JIMMIE MONACO



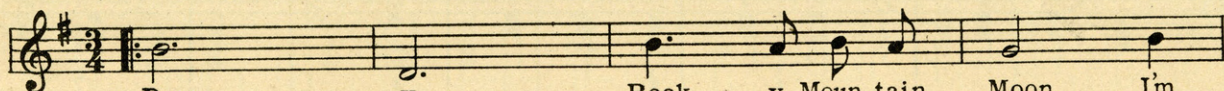
I am just a Lone - some Lov - er On - ly

## Dreamy Rocky Mountain Moon

LYRIC BY  
HARRY LEONARD

✦ WALTZ BALLAD ✦

MUSIC BY  
KAMIE BELFILS



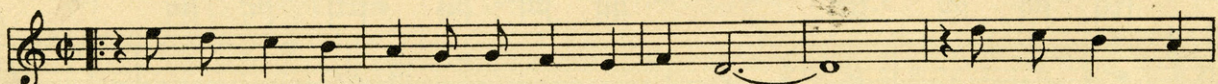
Dream - - y Rock - y Moun-tain Moon, I'm

## Little Spanish Dancer

LYRIC BY  
TOT SEYMOUR

✦ FOX TROT SONG ✦

MUSIC BY  
MABEL WAYNE



You were just a gay Lit tle Span-ish Danc - er When you danced my

COPIES ARE FOR SALE WHERE YOU BOUGHT THIS OR DIRECT @ 35 CENTS  
Get It For Your Phonograph And Player ~ Piano!

**L. F. FEIST, INC., 56 Cooper Square NEW YORK**

CANADA: RADIO MUSIC Co. Ltd. 193 YONGE ST., TORONTO

"YOU CAN'T GO WRONG WITH ANY 'FEIST' SONG"

# Lonesome Lover

(Saxophone Parts\*)

(Play Large Notes for Solo—Small Notes for Duet)

By AL. BRYAN and

JAMES V. MONACO

**E♭ Alto Saxophone** (Also E♭ Baritone Sax., E♭ Clarinet or Alto Clarinet)

Arr. by Frank E. Barry

(Also Cello, Trombone or Baritone Solo, using Bass Clef signature and altered accidentals)

Musical score for E♭ Alto Saxophone, consisting of five staves. The key signature is three sharps (F#, C#, G#) and the time signature is 3/4. The score begins with a piano (*p*) dynamic. The first staff contains the initial melody. The second staff includes a *p-f* dynamic marking. The third and fourth staves continue the melodic line. The fifth staff features first and second endings, with a *Piano* marking above the second ending.

**B♭ Tenor Saxophone** (Also B♭ Soprano Sax., B♭ Trumpet, B♭ Clarinet or any "B" Instrument—Trombone in  $\text{C}$ )

Musical score for B♭ Tenor Saxophone, consisting of five staves. The key signature is three sharps (F#, C#, G#) and the time signature is 3/4. The score begins with a piano (*p*) dynamic. The first staff contains the initial melody. The second staff includes a *p-f* dynamic marking. The third and fourth staves continue the melodic line. The fifth staff features first and second endings, with a *Piano* marking above the second ending.

**C Melody Saxophone** (Also C Soprano—Violin, Flute, Oboe or any "C" Instrument)

Musical score for C Melody Saxophone, consisting of five staves. The key signature is three sharps (F#, C#, G#) and the time signature is 3/4. The score begins with a piano (*p*) dynamic. The first staff contains the initial melody. The second staff includes a *p-f* dynamic marking. The third and fourth staves continue the melodic line. The fifth staff features first and second endings, with a *Piano* marking above the second ending.

(\* Introductions omitted)

Copyright 1930 by LEO. FEIST, Inc., 56 Cooper Square, New York

These arrangements Copyright 1930 by Leo Feist, Inc., N.Y.

International Copyright Secured & Reserved

There IS Something New Under The Sun!  
Here It Is →

**FEIST**  
**"NU-STYLE"**  
**MULTI-PART**  
**EDITION**

Of Popular "Feist" Songs



**What This "Nu-Style" FEIST Edition Is:**

The copy consists of the usual title-page cover and a double insert.

The insert carries the regular words and music of the song, comprised in the Voice and Piano parts with the customary Ukulele diagrams.

Above each diagram is a letter, naming the Actual chord, to be used for Guitar or Banjo accompaniment in the same key as the Piano.

Below each diagram is a corresponding letter, naming the Transposed chord, the name of the chord formed by the Ukulele diagram, where the original key of the song necessitates the convenience of transposition.

The lower letters can also be used, if desired, for Guitar or Banjo without Piano. These lower letters do not appear when the Ukulele is non-transposing.

For simplicity, there are both large and small lettered diagrams, the smaller of which can be omitted if played without Piano.

The inside cover consists of two pages, one of which contains the following Saxophone parts:

**E<sup>b</sup>** Alto Solo (large notes) with Duet (small notes)  
Can also be used for **E<sup>b</sup>** Baritone Saxophone, **E<sup>b</sup>** Clarinet, Alto Clarinet, or any instruments in **E<sup>b</sup>**.

**B<sup>b</sup>** Tenor Solo (large notes) with Duet (small notes)  
Can also be used for **B<sup>b</sup>** Soprano Saxophone, **B<sup>b</sup>** Trumpet, **B<sup>b</sup>** Clarinet, or any instruments in **B<sup>b</sup>**.

**C** Melody Solo (large notes) with Duet (small notes)  
Can also be used for **C** Soprano Saxophone, Violin, Flute, Oboe, or any instruments in **C**.

The Duet feature (small notes) is playable in almost any combination.

The other page of the inside cover contains:  
Tenor Banjo Solo (with Chords named and fingered)  
Hawaiian (Steel) Guitar Solo (with chords named and fingered)  
Any of the Solos or Duets may be accompanied by the Piano, also Ukulele, Guitar or Banjo by using the lettered chords in the Voice and Piano part.

**MUSIC - THE TIE THAT BINDS!**

*Self-played and Sung Music in the Home in which more than one musically-inclined member can participate, is one of Life's greatest joys and is a "Tie That Binds" both family and friends together.*

**FEIST "NU-STYLE" MULTI-PART EDITION is especially adaptable for Home Use!**

Whenever you bought a copy of a popular song in the past all that you expected and all that you got was a song, a melody with words to be sung and a Piano accompaniment!

But someone else in the home, who neither sang nor played the Piano, but who did play some other instrument, also felt the urge to join in the pleasure of playing the latest song, but could not do so because of the lack of technical skill essential in adapting the melody to their chosen instrument.

When the Ukulele became a popular instrument, because of its simplicity and portability, the little diagrams for the formation of harmonic chords to accompany the voice were added to popular song publications.

But that was not sufficient, other instruments were among the chosen; the Saxophone family, the Violin, the Clarinet, the Trumpet, the Banjo, the Guitar and others had their followers, so how could everyone join in the joy of playing that latest song without a part to play it from? They couldn't, but they can now!

*The Nu-Style MULTIPART Edition of Feist Songs  
Supplies this want and again proves the truth of our slogan,*

**"You Can't Go Wrong With Any 'Feist' Song"**

**IMPORTANT and Best of All: There Is No Increase In Price For This Edition!**

**Ask Your Dealer For The FEIST "NU-STYLE" MULTI-PART EDITION  
Look For The Shield Trade-Mark (Illustrated Above) On The Title Page**

