

KISS WALTZ

LYRIC BY
AL DUBIN

MUSIC BY
JOE BURKE

DANCING SWEETIES

A WARNER BROS. &
VITAPHONE PRODUCTION

FEATURING
GRANT WITHERS
SUE CAROL



WITH UKULELE
GUITAR, BANJO
AND MANDOLA
ACCOMPANIMENT



"KISS WALTZ"
"HULLABALOO"
M. WITMARK & SONS
B. FELDMAN & CO. LONDON, ENG. J. ALBERT & SON, SYDNEY, AUSTR.
MADE IN U.S.A.

KISS WALTZ

LYRIC BY AL DUBIN

MUSIC BY JOE BURKE

DANCING SWEETIES

A WARNER BROS. & VITAPHONE PRODUCTION

FEATURING
GRANT WITHERS
SUE CAROL



WITH UKULELE
GUITAR, BANJO
AND MANDOLA
ACCOMPANIMENT



TAKE A TIP FROM ME, FOLKS,

HERE'S A STEP THAT'S NEW!

IT'S HOT AS CAN BE, FOLKS,

CALLED "HULLA-BALOO!"

"KISS WALTZ"
"HULLA BALOO"
M. WITMARK & SONS
B. FELDMAN & CO. LONDON, ENG. J. ALBERT & SON, SYDNEY, AUSTR.
MADE IN U.S.A.

TWO FAVORITES
selected from
THE WITMARK BLACK AND WHITE SERIES
In My Castle Of Dreams With You

LOW-MEDIUM-HIGH VOICES

Lyric and Music by
LARRY WALKER

Valse moderato

I sit by my win-dow and gaze fond-ly in-to my cas-tle of dreams with
you. Each day I'm de-clar-ing there's no-bod-y shar-ing my cas-tle of.

Copyright MCMXXX by M. Witmark & Sons International Copyright Secured

Can't Yo' Heah Me Callin', Caroline

Lyric by WM. H. GARDNER

LOW-MEDIUM-HIGH VOICES
DUETS-High or Low Voice Lead

Music by CARO ROMA

Appealingly

Can't yo'heah me call-in'. Ca-ro-line, It's mah heart a-call-in' dine. Lord-y, how I
miss yo', gal o' mine, Wish dat I could kiss yo' Ca-ro-line! Ain't no use now

Copyright MCMXIV by M. Witmark & Sons International Copyright Secured

TRADE MARK



REGISTERED

THE ABOVE CAN BE HAD WHEREVER MUSIC IS SOLD OR OF THE PUBLISHERS
M. WITMARK & SONS DEPT. W. 1650 BROADWAY, NEW YORK

If you are interested in Highclass Melodious Songs

Send **SONGLAND** It's
for Free

Containing complete Poems and Thematic quotations, together with
a complete classified list of the numbers included in

THE WITMARK BLACK AND WHITE SERIES

Now available in three Editions - Secular - Sacred - Concert

TRADE MARK



REGISTERED

The Kiss Waltz

Lyric by
AL. DUBIN

Ukulele in D
Tune Uke thus A D F# B when used with Piano

Music by
JOE BURKE
Writers of
"Dancing With Tears
In My Eyes" etc.

SM8549
Use letter notation
for Guitar and Banjo Acc.
Tune one tone lower when used with Piano

Valse moderato (with expression)

Piano introduction in 3/4 time, marked *Valse moderato (with expression)*. The score features a treble and bass clef with various chords and melodic lines. Dynamics include *f* and *rit.*

First verse of the song. The vocal line is in treble clef with lyrics: "Dream-y the mu-sic is play - ing, You're here and Af - ter the danc-ing is o - ver, Af - ter the". The piano accompaniment is in bass clef, marked *mp atempo*. Chords are indicated above the staff: C, Em, Gm, A7.

Second verse of the song. The vocal line is in treble clef with lyrics: "I'm here, my dear; oth - ers are gone, Some-how the mu - sic keeps say - I'll hear the strains of the Kiss". The piano accompaniment is in bass clef. Chords are indicated above the staff: Dm, A7, Dm, A7, Fm, Am, Dm, C7.

8807

Copyright MCMXXX by M. Witmark & Sons

Copyrighted in South America for M. Witmark & Sons by Harry Kosarin, Rio de Janeiro
Propiedad Asegurada Para M. Witmark & Sons en Republica Argentina Por Harry Kosarin, Buenos Aires
Propiedad Asegurada Para M. Witmark & Sons en Republica Uruguay Por Harry Kosarin, Montevideo
International Copyright Secured Made in U. S. A.

M.W. & Sons 17605-3

ALL RIGHTS RESERVED INCLUDING PUBLIC PERFORMANCE FOR PROFIT

Am Em Am B7 Em B7 G7

ing Waltz Some-thing I want you to hear.
Sing-ing and lin-ger-ing on.

REFRAIN Valse lento

C F#dim. G7

Kiss me, sweet-heart, kiss me, — That's what the

p-f

C#dim. A7

Kiss Waltz is say-ing; — Bring your lips close to mine while we're

C#dim.7 Dm D7 Fm G7

sway-ing, Oh, my dear! Can't you hear what they're play-ing?

M.W. & Sons 17605-3

IF YOU ARE INTERESTED IN
OCTAVO MUSIC
 NOVELTIES OF ALL KINDS
 TWO THREE AND FOUR PART SONGS
 ARRANGED FOR MALE, FEMALE AND MIXED VOICES



INCLUDING



OVER 2000 NUMBERS LISTED - SENT FREE ON REQUEST

C F#dim. G7 Eb

This waltz is the Kiss Waltz, — Tell - ing us

Am C7 F Fm

both what to do; So kiss me! sweet - heart,

p Slower

Em A Gm A7 Dm A7 Dm G7 Gaug.5

kiss me! While I dance the Kiss Waltz with

atempo

cresc. molto

1. C G7 2. C Am

you. you.

rit.

M.W. & Sons 17605-3

IF YOU ARE INTERESTED IN
ENTERTAINMENTS
 PLAYS OPERETTAS
 SENT FREE



AMATEUR
MINSTRELSY
 SONGS JOKES MONOLOGS
 ON REQUEST

THIS
 SONG
 YOUR
 MAKING
 FINE
 AND
 PAYER
 AND

SONGLAND



The Witmark Black and White Series

M. WITMARK & SONS
1659 BROADWAY (Dept. 37) NEW YORK

SONGLAND

Is now available in two editions

SACRED ~ SECULAR

Each contains many thematic pages as shown below together with a complete CLASSIFIED list of titles found in the world famous

WITMARK BLACK and WHITE SERIES

EITHER OR BOTH FREE ON REQUEST

AT THE END OF THE DAY WITH YOU



LYRIC BY
WALTER RAFAEL

MUSIC BY
JOHN McLAUGHLIN



M. WITMARK & SONS
NEW YORK

Of all the hours of day or night, dear,
From dawn till evening shadows fall;
There is but one time of delight, dear,
One time that's best of all.

At the end of the day, when cares fade away,
The twilight is gray above;
I draw you so near and kiss every tear
That comes with each whisper of love,
Your smile makes it seem like a wonderful
dream
That has, somehow, at last come true;—
The long day is done, but life's just begun,
At the end of the day with you.

Thru all the day I wait till evening,
And daylight spends itself in vain;
Each day is long, the hours are lonely,
Till evening comes again—

—Walter Rafael

SOLO—THREE KEYS
A \flat , (e \flat to e \flat) B \flat , (f to f) C, (g to g)—40c
OCTAVO
Male and Mixed Voices—15c

With much expression

At the end of the day, When cares fade a-way, The twi-ght is gray a - bove;—
I draw you so near And kiss ev-ry tear That comes with each whis-per, of love, Your
smile makes it seem like a won-der-ful dream That has, some-how, at last come true; The

poco ten.

Copyright MCMXXX by M. Witmark & Sons



M. WITMARK & SONS 1659 BROADWAY
NEW YORK

SONGLAND

The Witmark Black and White Series

M. WITMARK & SONS
1659 BROADWAY (Dept. 37) NEW YORK

WARNER
BROS. &

VITAPHONE
REG. TRADE MARK

SINGING
PICTURES

FIRST
NATIONAL &

VITAPHONE
REG. TRADE MARK

SINGING
PICTURES

DOROTHY MACKAILL

BEAUTIFUL
STAR
OF

BRIGHT
LIGHTS

A
FIRST NATIONAL
& VITAPHONE
PICTURE



ASK TO HEAR
THE LEADING
SONG HITS
OF

BRIGHT
LIGHTS

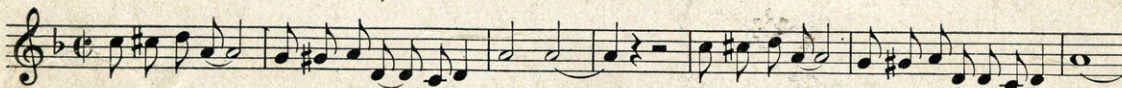
NOBODY CARES
IF I'M BLUE

SONG OF THE
CONGO

EVERY LITTLE
GIRL HE SEES

NOBODY CARES IF I'M BLUE

By GRANT CLARKE & HARRY AKST



No-bod-y knows, no-bod-y cares if I'm lone-some, — No-bod-y sighs, no-bod-y cries if I'm blue..

EVERY LITTLE GIRL HE SEES

By GRANT CLARKE & HARRY AKST



Ev-'ry lit-tle girl he sees he wants, And ev-'ry lit-tle girl he wants he gets,

SONG OF THE CONGO

By HERB. MAGIDSON, NED WASHINGTON & RAY PERKINS



Song of the Con-go, — Blue as the night, — Deep as the sea. —

Copyright MCMXXX by M. WITMARK & SONS

International Copyright Secured

CAN BE HAD WHEREVER MUSIC IS SOLD OR FROM THE PUBLISHERS

M. WITMARK & SONS · 1650 BROADWAY · NEW YORK