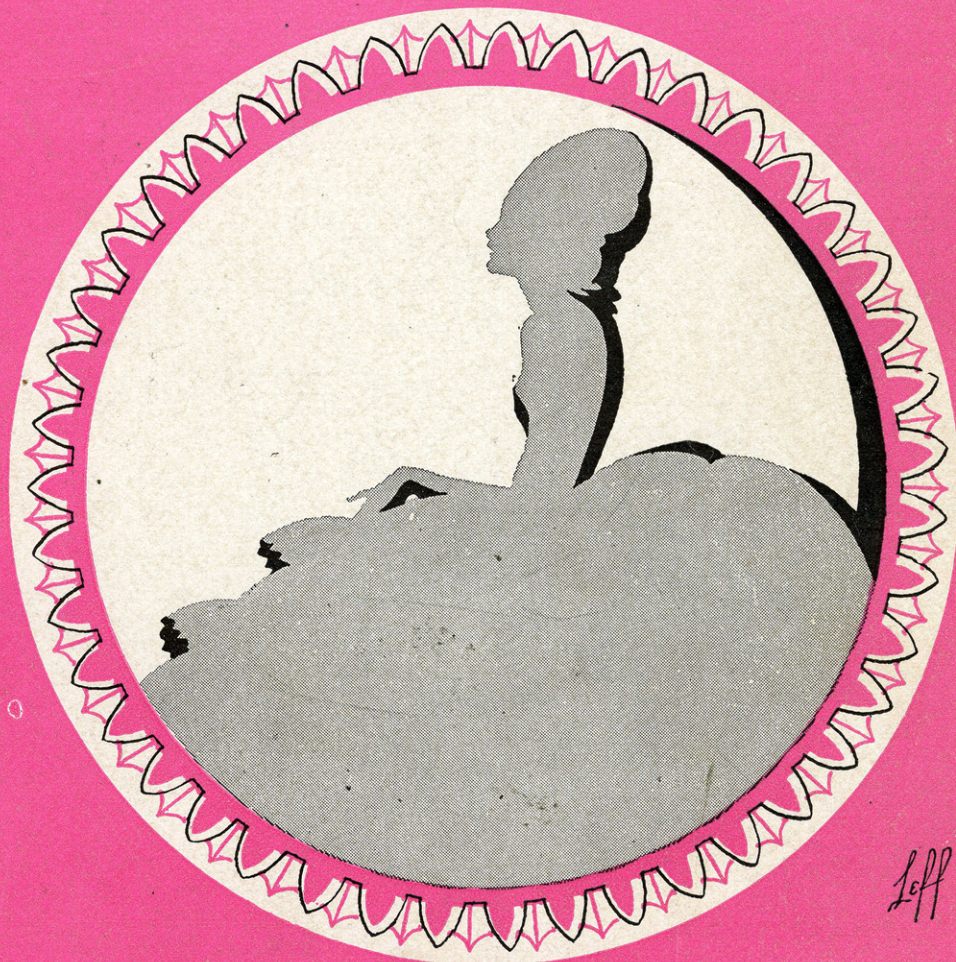


IRVING BERLIN'S JUST A LITTLE WHILE

Wally

Ar Rodmus



Leff

Irving Berlin, Inc.
MUSIC PUBLISHERS
1607 Broadway New York



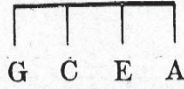
MADE IN USA

ORDER CODE
"WHILE"

Just A Little While

* Tune Ukulele
or Banjulele Banjo

By IRVING BERLIN



SM 8541

Valse Moderato

PIANO

f

* Letters over Uke diagrams are symbols for Guitar and Banjo but are written one tone higher than original for simplicity

Vamp
p



VOICE



Ro - mance seemed to beck-on the first time we met, To - geth - er we

p

Ukulele Arr. by
MAY SINGHI BREEN

strolled 'neath the moon _____ 'Twas sweet while it last - ed and

A7 D

I've no re - gret _____ Al - tho' it was o - ver too soon _____

F#7 Bmi Dmi A E7 A7 Gmi A7

CHORUS

Just a lit - tle while 'twas so di - vine To see the

G Gmi D F#7

p-f

sun come out and shine when I was yours and you were

Bmi B7 Emi Gmi

A7 D Gmi D G Gmi D

mine Just a lit-tle while _____ Just a lit-tle while the mo-ments

colla voce

F#7 Bmi B7

passed And soon my heart was beat - ing fast A - bout a

Emi G A7 D

love I knew would last Just a lit - tle while _____

colla voce

A7 D D7 B7

Now that we're a - part guess I'd bet - ter start

E7 A7 G Gmi

Patch - ing up my heart with a smile _____ But I nev - er

D F#7 Bmi

knew that hap - py day a brok - en heart would have to

B7 Emi Gmi A7

pay For dreams of love that came to stay Just a lit - tle

colla voce

D Gmi D G Gmi D

1 while. _____ Just a lit - tle while. _____ 2



RUDY VALLÉE'S SENSATIONAL WALTZ BALLAD OLD NEW ENGLAND MOON

Words & Music by
DAVE VANCE &
GEORGE P. HOWARD

Chorus

Old New Eng - land moon I'm pin - ing

pin - ing for a sight of you

How I long to see you shin - ing

Copyright 1930 by IRVING BERLIN Inc., 1607 Broadway N. Y. C.
International Copyright Secured Made in U.S.A. All Rights Reserved

COPIES ON SALE WHEREVER MUSIC IS SOLD
This Number can also be had for your Phonograph and Player Piano