

DARK NIGHT

Words by Clifford Grey

Music by Herbert Stothart and Xavier Cugat

RAMON NOVARRO IN GAY MADRID

A Metro-
Goldwyn-
Mayer
ALL
TALKING
PICTURE



DARK NIGHT
INTO MY HEART
SANTIAGO

ROBBINS MUSIC CORPORATION

799 Seventh Avenue, New York

Try this Melody Over

Into My Heart

Featured in Metro-Goldwyn-Mayer's Production "In Gay Madrid"

Lyric by
ROY TURK

Music by
FRED E. AHLERT

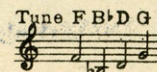
Chorus

In-to my heart, Que - ri - da you came un - know - ing

In - to my heart, Que - ri - da with love - light glow - ing

Close to my breast for - ev - er I long to hold you

Uke Arr. By Milt Coleman
S.H. 688-3



Copyright 1930 by Metro - Goldwyn - Mayer Corp. New York, N.Y.
By arrangement with De Sylva, Brown & Henderson Inc.
Exclusive Distributors Robbins Music Corporation, 799 Seventh Ave., New York N.Y.

Complete Song May Be Purchased From Your Favorite Dealer

Sung by Ramon Novarro
Dark Night

Featured in Metro-Goldwyn-Mayer's Production "In Gay Madrid"

Words by
CLIFFORD GREY

Music by
HERBERT STOTHART
and XAVIAR CUGAT

SM 84158

Tempo di Barcarola

L.H.

mf

rall.

Detailed description: This block contains the piano introduction for the song. It is written in G major and 6/8 time. The tempo is 'Tempo di Barcarola'. The music starts with a mezzo-forte (mf) dynamic and includes a 'rall.' (ritardando) section. The left hand (L.H.) part is indicated at the top right. The introduction consists of two staves of music, with the right hand playing chords and the left hand playing a simple bass line.

Do you long for a sun - beam, Do you cry for the moon?
All the night to my heart sings, Through the twi-light a - bove,

p

Detailed description: This block contains the first line of the song. It features a vocal line with lyrics and a piano accompaniment. The piano part is marked 'p' (piano). Above the vocal line, there are guitar chord diagrams for the right hand. The lyrics are: "Do you long for a sun - beam, Do you cry for the moon? All the night to my heart sings, Through the twi-light a - bove,".

Do you sigh for a rain - bow, Or the Night-in-gale's tune? —
How it tears at my heart - strings For its voice is my love. —

Detailed description: This block contains the second line of the song. It features a vocal line with lyrics and a piano accompaniment. The lyrics are: "Do you sigh for a rain - bow, Or the Night-in-gale's tune? — How it tears at my heart - strings For its voice is my love. —". Above the vocal line, there are guitar chord diagrams for the right hand.

Uke arr. by Milt Coleman

Copyright 1930 by Metro Goldwyn Mayer Corp., New York, N.Y.

Exclusive Distributors Robbins Music Corporation, 799 Seventh Ave., New York

Copyrighted in South America by Harry Kosarin, Rio de Janeiro

Propiedad Asegurada Para Republica Argentina Por Harry Kosarin, Buenos Aires

Propiedad Asegurada Para Republica Uruguay Por Harry Kosarin, Montevideo

International Copyright Secured

Made in U.S.A.

All Rights Reserved

Tune Uke A D F# B

Detailed description: A small diagram showing the chord progression for the ukelele: A, D, F#, B.

SH 687 - 3
CODE - Dark

Then you'll know if you hear me, How I'm long-ing for you;
If the dew loves the ros - es, And the stars love the sea;

When my heav-en is near me, Wont you make it come true?
If the trees love the shad - ows, Have you no love for me?

rall.

Chorus

Dark night, dark night, — hides the love in my eyes,

p - mf

Dark night, dark night, hides your look of sur-prise;

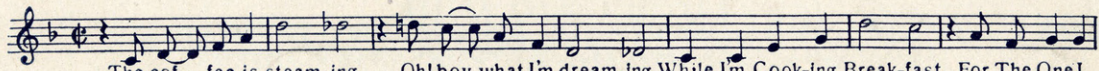
Dear one tell me that we two will not part;

Dark night nev - er hides the love in my heart. heart. *L.H.*

A Truly Unusual Folio of
WORLD FAMOUS LOVE SONGS
Includes such favorites as
 "WHISPERING HOPE" "LA GOLANDRINA"
 "CIELITO LINDO" "VOLGA BOAT SONG", etc.

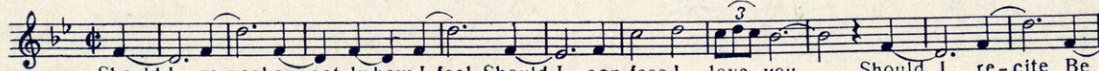
SONG SUCCESSES FROM THE FOREMOST TALKIES

Cooking Breakfast for the One I Love



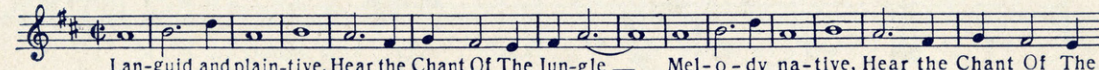
The cof - fee is steam-ing, Oh! boy what I'm dream-ing While I'm Cook-ing Break-fast For The One I
Copyright 1930 by William Rose Inc., New York, N. Y.

Should I



Should I re-veal ex-act-ly how I feel Should I con-fess I love-you Should I re-cite Be
Copyright 1929 by Metro-Goldwyn-Mayer Corp. New York, N. Y.

Chant of the Jungle



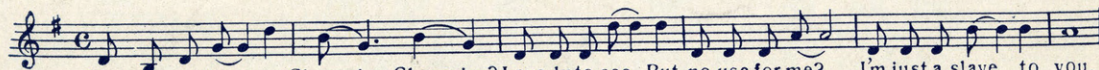
Lan-guid and plain-tive, Hear the Chant Of The Jun-gle — Mel-o-dy na-tive, Hear the Chant Of The
Copyright 1929 by Metro-Goldwyn-Mayer Corp. New York, N. Y.

That Wonderful Something (Is Love)



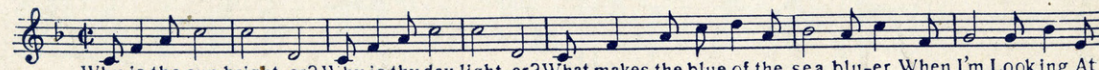
Some-thing's bring-ing you near-er Some-thing's mak-ing life dear-er I know, That Won-der-ful Some-thing Is
Copyright 1929 by Metro-Goldwyn-Mayer Corp. New York, N. Y.

Charming



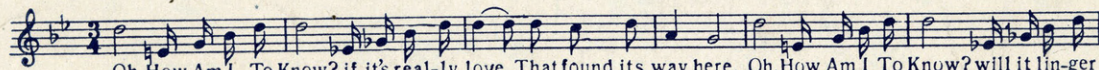
How can you be so Charm-ing, Charm-ing? Love-ly to see. But no use for me? I'm just a slave to you.
Copyright 1929 by Metro-Goldwyn-Mayer Corp. New York, N. Y.

When I'm Looking at You



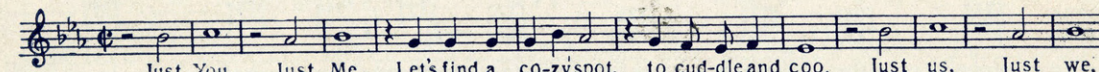
Why is the sun bright-er? Why is thy day light-er? What makes the blue of the sea blu-er When I'm Looking At
Copyright 1929 by Metro-Goldwyn-Mayer Corp. New York, N. Y.

How Am I To Know



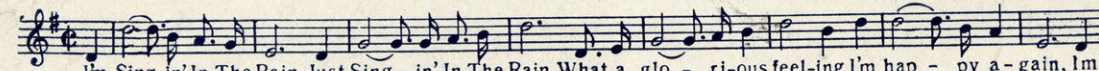
Oh, How Am I To Know? if it's real-ly love-That found its way here, Oh, How Am I To Know? will it lin-ger
Copyright 1929 by Metro-Goldwyn-Mayer Corp. New York, N. Y.

Just You, Just Me



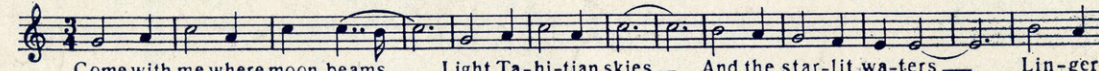
Just You, Just Me, Let's find a co-zy spot, to cud-dle and coo. Just us, Just we,
Copyright 1929 by Metro-Goldwyn-Mayer Corp. New York, N. Y.

Singin' in the Rain



I'm Sing-in' In The Rain, Just Sing - in' In The Rain. What a glo - ri-ous feel-ing I'm hap - py a - gain, I'm
Copyright 1929 by Metro-Goldwyn-Mayer Corp. New York, N. Y.

Pagan Love Song



Come with me where moon-beams — Light Ta-hi-tian skies — And the star-lit wa-ters — Lin-ger
Copyright 1929 by Metro-Goldwyn-Mayer Corp. New York, N. Y.

COPIES OBTAINABLE AT YOUR MUSIC DEALER

799 7th Ave.

ROBBINS MUSIC CORPORATION

New York